



CAC Spring 2022 Staff updates

Coastal Management Section



Compliance and Enforcement

Buck Bennett

Compliance & Enforcement

	2021	2022 (YTD)
Unauthorized Activities	147	40
Waterbottom Lease Fee Per Acre	\$1,223.62	\$1,290.34

10/01/2021 through 3/31/2022

Compliance Visits	57
Marina Leases	4
Not Built as Permitted	18
Built w/o Permit	60
Other Impacts	49
Sunken Vessels	3

Data Current as
of 4/27/2022

Staff: C&E has 3 full time staff members. C&E Manager and 2 C&E Specialists

2 Staff members are FAA Part 107 certified UAV/drone pilots.

Waterbottom Lease Fee Invoices will be sent out in June 2022. For Profit Marinas with over 500 linear feet of floating docks will be billed.



Shellfish and Water Quality

Dominic Guadagnoli

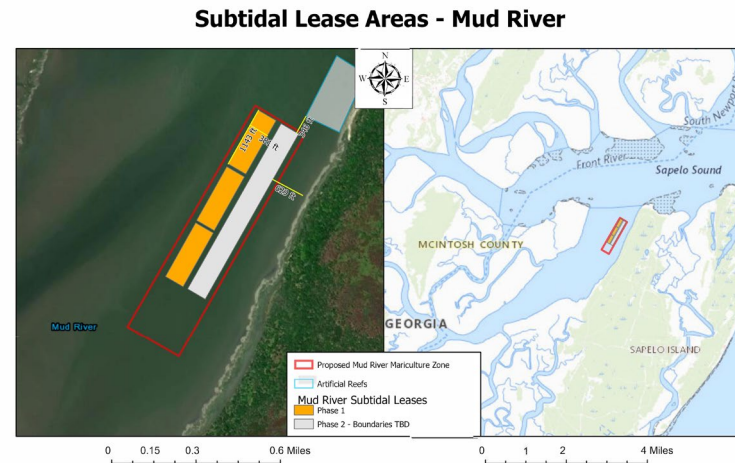
Shellfish and Water Quality Program Update

- The effective date for the new shellfish code was March 1, 2020.
- A new Shellfish Mariculture Permit(SMP) required for all lease holders who engage in mariculture.
- A new Shellfish Cultivation Permit(SCP) required for all lease holders who engage in traditional cultivation of wild shellfish beds.
- SMP and SCP also require an Army Corp of Engineers (ACOE) permit prior to deploying any materials and/or mariculture gear into lease areas.
- Program staff continuing to provide technical assistance to existing and new lease holders with new shellfish mariculture and cultivation permit applications.
- Five new intertidal leases issued in 2020, 3 in McIntosh and 2 in Bryan county.
- The Shellfish and Mariculture Advisory Panel convened in spring of 2021.
- A virtual public meeting was held in March 2021, to provide a program overview and maps of the proposed Mud River subtidal lease locations.



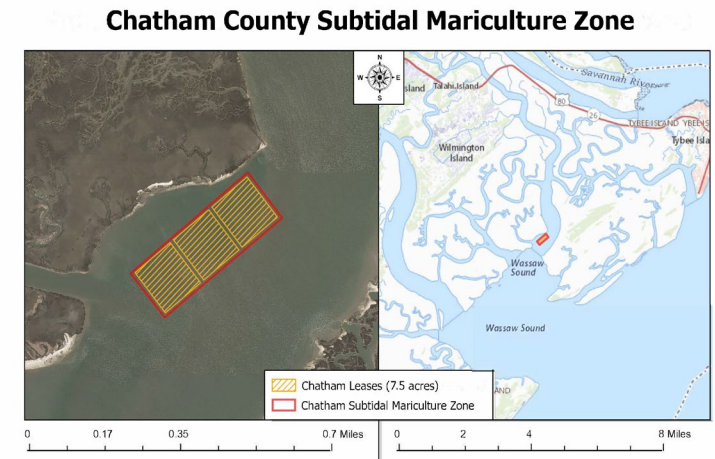
Shellfish and Water Quality Program Update

- The lottery opened in May 2021; three new subtidal lease holders were selected in June in the Mud River Mariculture Zone.
- A second virtual public meeting was held in November 2021, to provide a program overview along with maps of proposed subtidal lease locations in Bull River in Chatham County.
- The lottery opened in December 2021; three subtidal lease holders were selected in February 2022 in the Bull River Mariculture Zone.
- A Shellfish Program Policy Manual was completed and posted on the CRD website in early May 2021.
- A new shellfish survey was also posted to gather feedback from prospective growers to guide future siting of leases.
- Plans for offering additional traditional and mariculture intertidal lease opportunities coming soon along with a new leasing dashboard.
- A joint vibrio validation study will be conducted by UGA, CRD and DOA during summer of 2022 to gather vibrio data from oysters from a variety of floating gear types.



Disclaimer: This map is produced by the Georgia Department of Natural Resources for purpose of determination of any official legal extents, boundaries, or any other legal determinations. Do not use this map for navigational purposes. Although every effort has been made to ensure the accuracy of the information presented herein, the Coastal Resources Division does not guarantee that this map is error-free.

Service Layer Credits: Esri, HERE, Garmin, Earthstar Geographics, USGS The National Map, National Hydrography Dataset, National Land Cover Database, National Structures Dataset, and Bureau TIGER/Line data; USFS Road Data; Natural Earth Data; U.S. Department of State Humanitarian U.S. Coastal Relief Model. Data refreshed May, 2020.



Disclaimer: This map is produced by the Georgia Department of Natural Resources for purpose of providing visual aid and illustrative context. This map is not for determination of any official legal extents, boundaries, or any other legal determinations. Do not use this map for navigational purposes. Although every effort has been made to ensure the accuracy of the information presented herein, the Coastal Resources Division does not guarantee that this map is error-free.



Marsh and Shore Regulatory

Josh Noble

Marsh and Shore Management Program

Authorization Type	2020	2021
CMPA Permit	23	8
SPA Permit	7	4
Letters of Permission (temporary activities)	141	184
Revocable Licenses* (docks, bank stabilization)	315	334
Jurisdictional Determinations	404	517



Federal Consistency

Jill Andrews

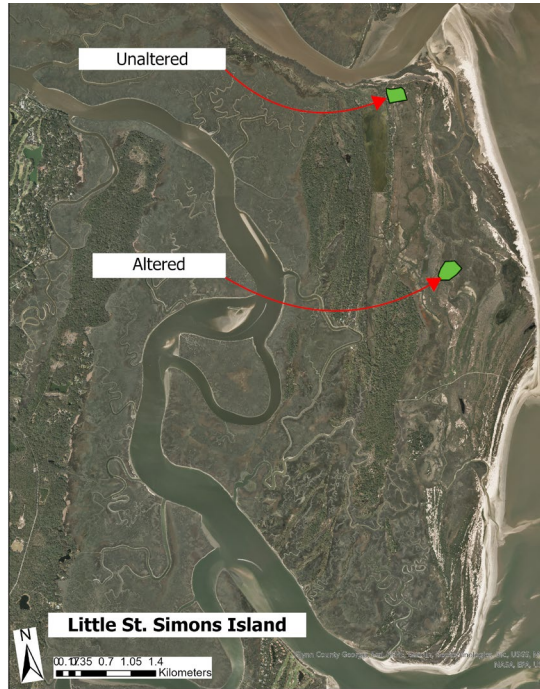


Wetlands

Jaynie Gaskin

Wetlands

Hydrogeomorphic Evaluation: Little St. Simons Island



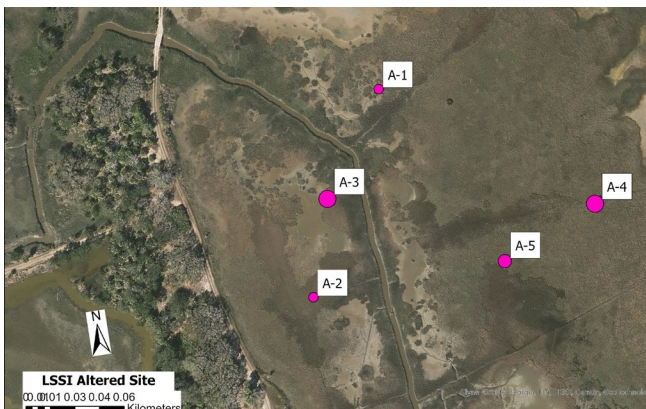
Assess functional condition of wetland based on:

- Geomorphic Setting
- Water Source
- Hydrodynamics



Hydrology Assessment:

- Degree, Duration & Period
- Ten Monitoring Wells
- Pressure & Temperature
- Every 30 Minutes for 1 Year



Monitoring & Restoration with Georgia Power



Thin-Layer Placement & Control Sites, Jekyll Marsh





Wetlands

Meghan Angelina

Wetlands

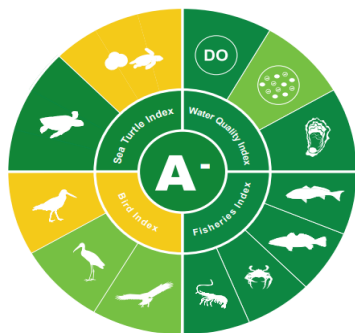
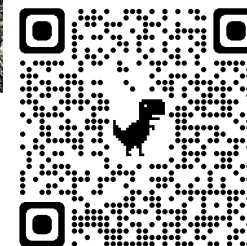
Wetlands Research Advisory Committee (WRAC)

- 8 WRAC requests since September 2021



The Georgia Flood Literacy Project

- Flood Literacy Taskforce
- Presentations
 - Georgia Climate Conference (Aug 2021)
 - Urbana Perry Neighborhood Planning Unit (Oct 2021)
 - 2022 CAC Winter Meeting (Feb 2022)
 - CRD Brownbag Presentation (Feb 2022)
 - Poster – SEERS Annual Meeting (March 2022)
 - GAFM Annual Meeting (April 2022)
- 2022 ASFPM award recipient



Scoring Legend

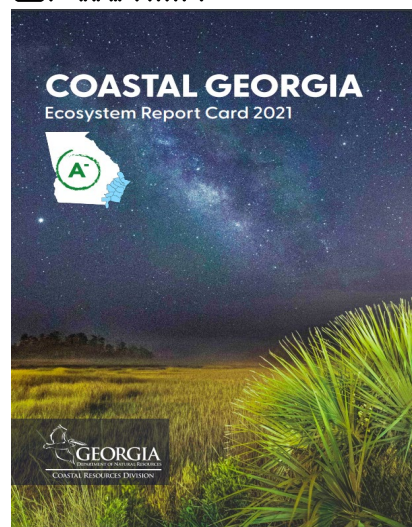
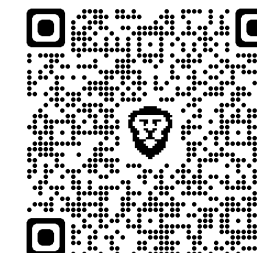
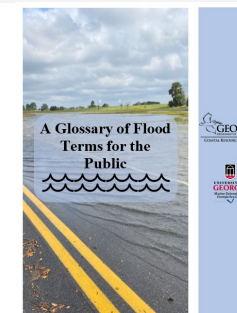
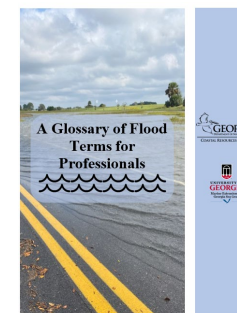
- (A) 80-100% good
- (B) 60-79% moderately good
- (C) 40-59% moderate
- (D) 20-39% poor
- (F) 0-19% very poor

The 2021 Coastal Georgia Ecosystem Report Card

- Released on April 22, 2022
- Overall score of an 81%, a good score based on twelve indicators

Living Shorelines

- 7 living shoreline site visits including two potential projects at Fort Frederica and Guale Preserve
- EWN proposal – 2023 start date
- The Living Shorelines Workgroup
 - Upcoming meeting May 2022
 - Plans to create a document titled, “Twelve Years of Living Shorelines in Georgia”

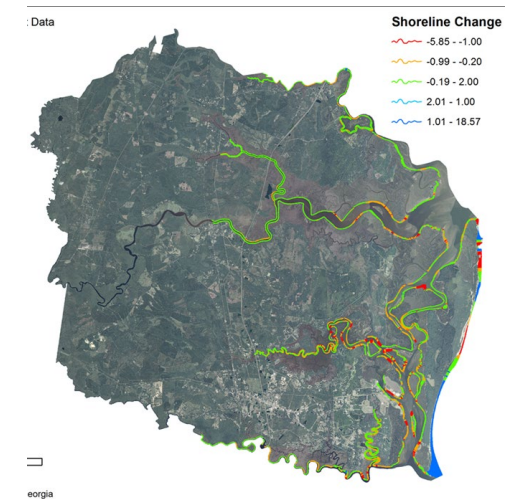
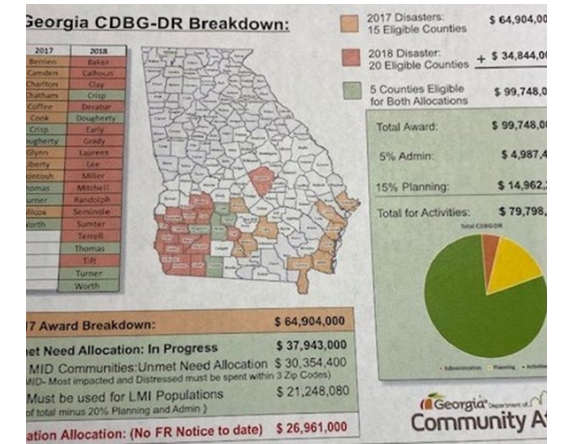
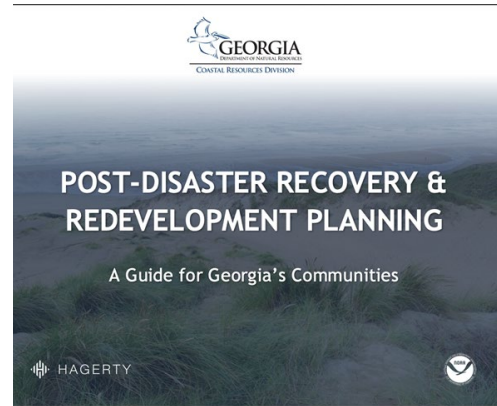




Coastal Hazards

Jennifer Kline

Coastal Hazards



AMBUR update



Green Growth

Kelly Hill

Green Growth

Build Your Own
Rainbarrel Workshops



coastalgadnr.org/RainBarrelWS

Coastal Low Impact Development (LID) Best Management Practices Inventory *Summary Report*



Prepared for Georgia Department of Natural Resources, Coastal Resources Division

Prepared by Marine Extension and Georgia Sea Grant in partnership with Ecological Planning Group, LLC



March 30, 2018

coastalgadnr.org/DemoSites

Brownbags are Back!



Brownbag: Georgia Flood Literacy Project

Georgia DNR Coastal Resources Division

29:43



Evaluating Best Practices in Dune Restoration:

Georgia DNR Coastal Resources Division

39:12



Sea Grant State Fellow

Shannon Matzke

Resiliency Programs

Georgia Clean Marina Program

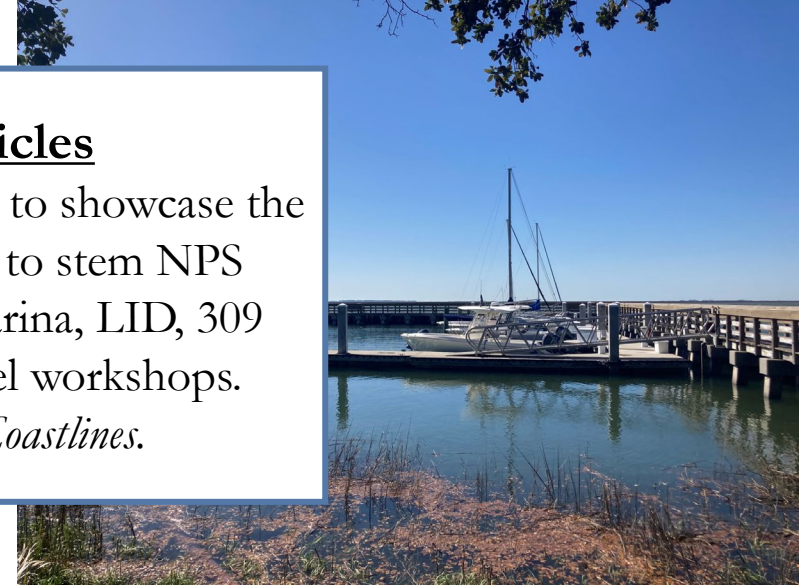
Stakeholder input led to an update of the existing program. We have updated the checklist and implementation plan and are currently working to purchase flags for certified marinas.



gadnr.org/cleanmarina

NPS Articles

Content that will help to showcase the work GCMP does to stem NPS pollution. Clean Marina, LID, 309 project, Rain Barrel workshops. Featured in *Coastlines*.

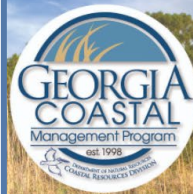


coastalresiliency-gcmp.hub.arcgis.com/



Coastal Resiliency Hub

Esri product that houses GCMP resiliency information.

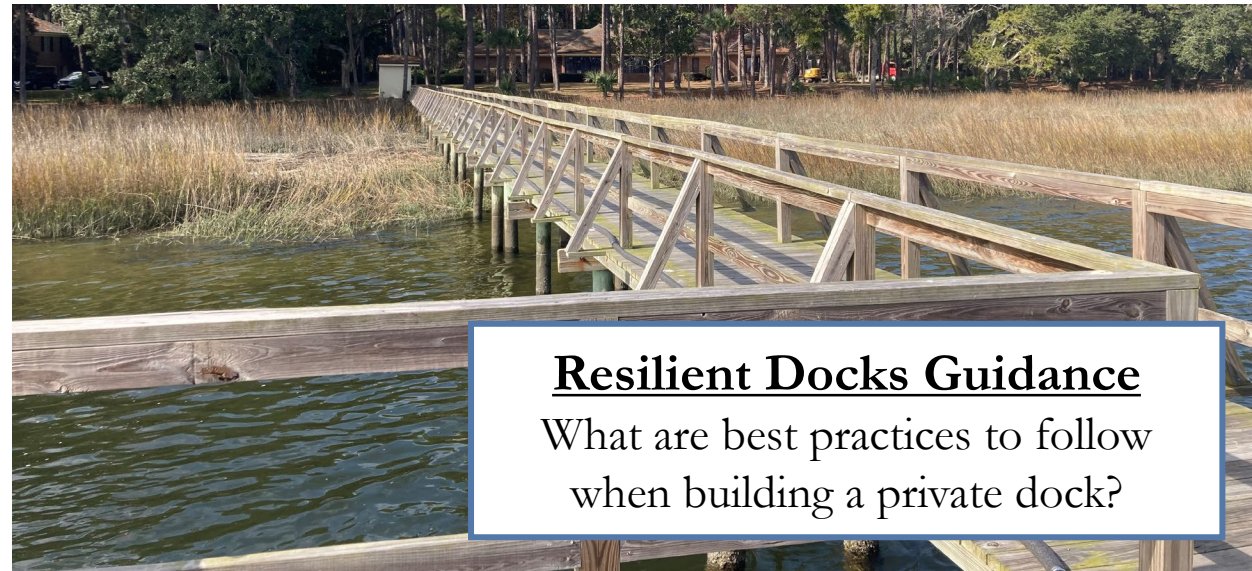


within the GA Coastal Resiliency Hub

Coastal Management Program (GCMP) to balance economic development in Georgia's coastal zone with preservation of natural, environmental, historic, archeological, and recreational resources for the benefit of Georgia's present and future generations.

Coastal Resiliency

The Earth's changing climate is one of coastal Georgia's greatest environmental challenges. It is critical that preparations to adapt and reduce our vulnerabilities to the inevitable changes be initiated. Georgia's



Resilient Docks Guidance

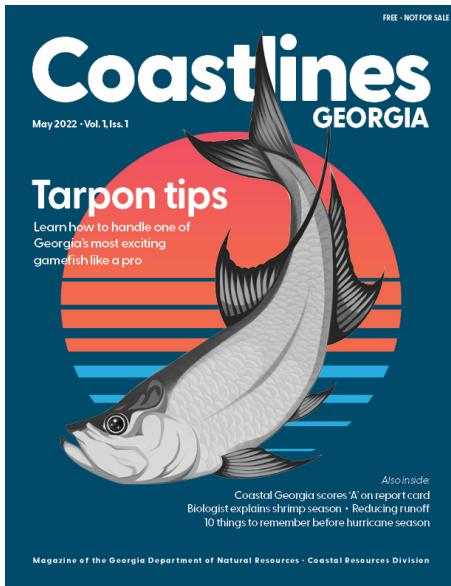
What are best practices to follow when building a private dock?



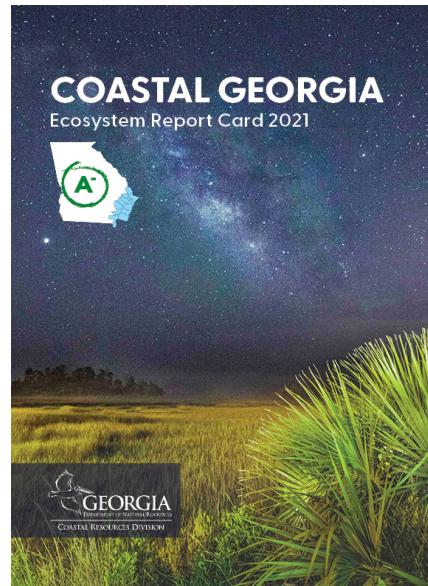
Communications & Outreach

Tyler Jones

Communications & Outreach



Launches May 6



Released April 22



Save the date: 10 a.m. – 4 p.m. Oct. 1



July 17-23



Grant Administration

Jan Mackinnon

Grant Administration

New online portal was implemented successfully



Coastal Incentive Grant

Sign In/Sign Up Instructions

For New Users:
By clicking **Sign Up**, you will be prompted to enter your email address and create a password. Once you have chosen your password, your account will be created and you will gain access to the portal.

For Returning Users:
Sign into the portal using the email address and the password you created when you originally signed up for the portal. If you have forgotten your password, click **"Forgot your password?"** and follow the prompts to reset your password.

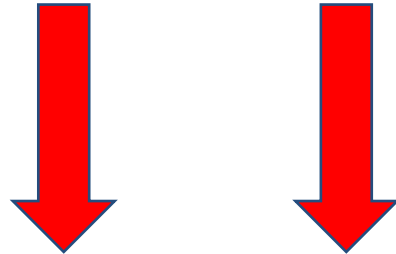
Sign In

Email

Password

Need an Account?

23 Pre-applications were received for Cycle 25, of which 14 were invited to submit a full application. 13 Cycle 25 CIG full applications were submitted and reviewed by the CIG Technical Review Committee, of which 9 were recommended for funding and will be submitted to NOAA for review and approval.



The following proposals were elevated to NOAA for approval:

Applicant	PI	Title
Chatham County	Jeff Kirkland	Green Infrastructure to Address SLR Vulnerabilities in Chatham County
City of Brunswick	J. Garrow Alberson	Improving Resilience in West Brunswick
UGA	Clark Alexander	Assessing Trends in Sediment Accumulation Rates for Georgia Marsh Sustainability
UGA	Jessica Brown	Stormwater Best Management Practice Inspection and Maintenance Course
GA Tech	Tony Giarrusso	Coastal Georgia 2009-2019 Tree Canopy Assessment, Change Detection, Outreach and Training
UGA	Eugene Frimpong	Estimating the Economic Benefit and Impact of Artificial Reefs in Georgia
UGA	Clark Alexander	Filling Critical Data Gaps to Enhance Coastal Management in Georgia: Sand Resources
UGA	Kimberly Andrews	Assessing Impacts to Community Infrastructure and Coastal Habitats from Flooding and Shoreline Change: The Science and the Engagement
UGA	Nina Sassano	Exploring from within: A LS exhibit at UGA MECA

https://dnrintranet.org/sites/default/files/dnrnet/pdf/DNR_Vacancy_Announcement.pdf

