

VICINITY MAP

NOT TO SCALE

SIGN REPLACEMENT/REPAIR PLANS

PREPARED FOR : HEMLATA N. PATEL
RECEIVED * 102 COMPANION WAY
 SAVANNAH, GEORGIA 31419
 912-507-2509
MAY 11 2017
GA DNR / HMP



BOSWELL DESIGN SERVICES, INC.

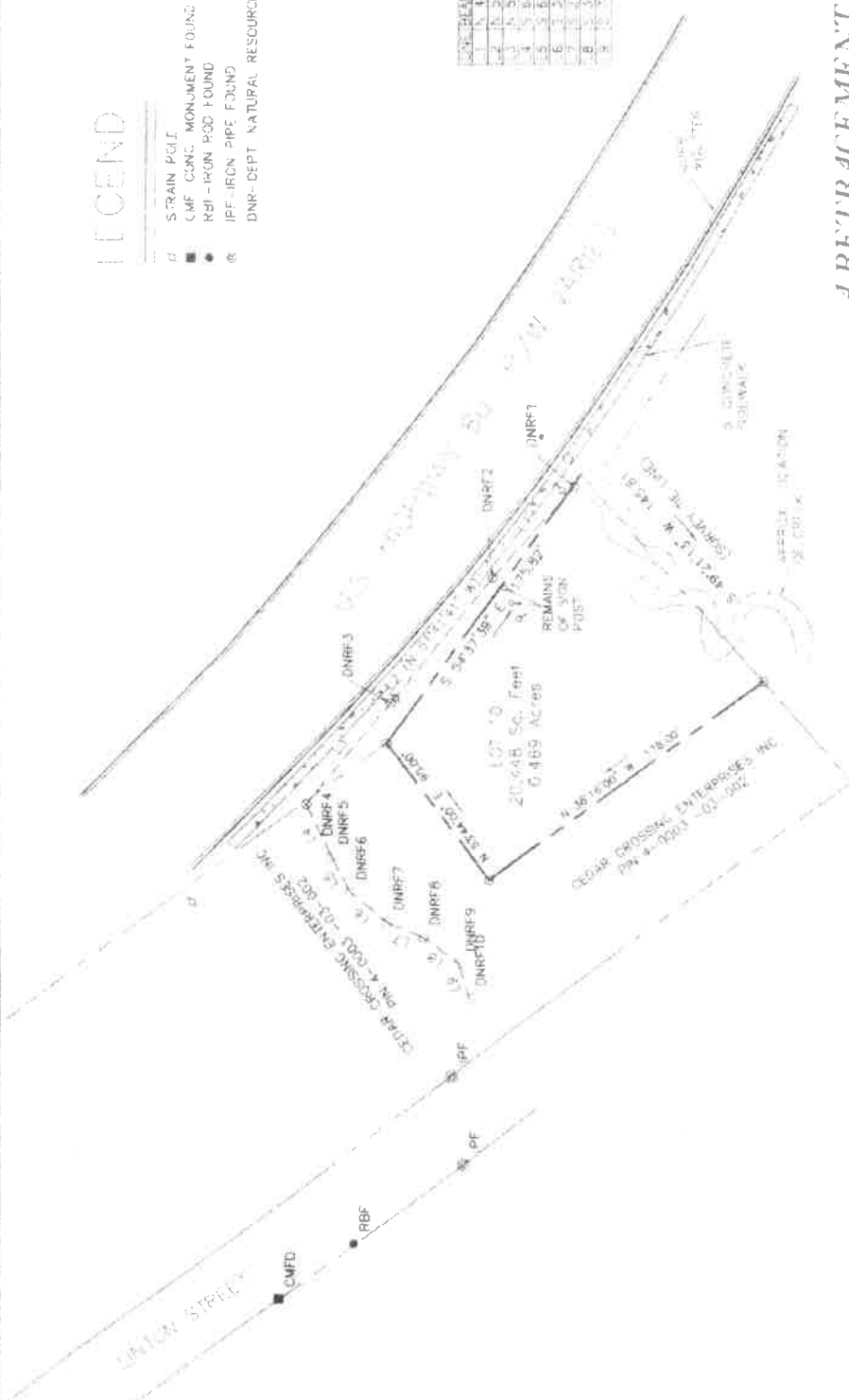
103 NASSAU DRIVE
 SAVANNAH, GEORGIA 31410
 (912) 897-6932
 LAHBOS@BELLSOUTH.NET

LEGEND

- STRAIN PILE
- CMF CONC. MONUMENT FOUND
- RFI - IRON PIG FOUND
- ⊙ IFF - IRON PIPE FOUND
- ⊕ DNR-DEPT NATURAL RESOURCES

REFERENCE #

STATION	BEARING	DISTANCE
1	N 87° 02' 50" W	63.50
2	N 51° 41' 42" W	86.00
3	N 50° 50' 32" W	169.79
4	S 84° 52' 54" W	135.71
5	S 84° 54' 48" W	225.91
6	S 87° 07' 40" W	131.50
7	S 87° 07' 40" W	131.50
8	S 87° 07' 40" W	131.50
9	S 87° 07' 40" W	131.50
10	S 87° 07' 40" W	131.50
11	S 87° 07' 40" W	131.50
12	S 87° 07' 40" W	131.50
13	S 87° 07' 40" W	131.50
14	S 87° 07' 40" W	131.50
15	S 87° 07' 40" W	131.50
16	S 87° 07' 40" W	131.50
17	S 87° 07' 40" W	131.50
18	S 87° 07' 40" W	131.50
19	S 87° 07' 40" W	131.50
20	S 87° 07' 40" W	131.50
21	S 87° 07' 40" W	131.50
22	S 87° 07' 40" W	131.50
23	S 87° 07' 40" W	131.50
24	S 87° 07' 40" W	131.50
25	S 87° 07' 40" W	131.50
26	S 87° 07' 40" W	131.50
27	S 87° 07' 40" W	131.50
28	S 87° 07' 40" W	131.50
29	S 87° 07' 40" W	131.50
30	S 87° 07' 40" W	131.50
31	S 87° 07' 40" W	131.50
32	S 87° 07' 40" W	131.50
33	S 87° 07' 40" W	131.50
34	S 87° 07' 40" W	131.50
35	S 87° 07' 40" W	131.50
36	S 87° 07' 40" W	131.50
37	S 87° 07' 40" W	131.50
38	S 87° 07' 40" W	131.50
39	S 87° 07' 40" W	131.50
40	S 87° 07' 40" W	131.50
41	S 87° 07' 40" W	131.50
42	S 87° 07' 40" W	131.50
43	S 87° 07' 40" W	131.50
44	S 87° 07' 40" W	131.50
45	S 87° 07' 40" W	131.50
46	S 87° 07' 40" W	131.50
47	S 87° 07' 40" W	131.50
48	S 87° 07' 40" W	131.50
49	S 87° 07' 40" W	131.50
50	S 87° 07' 40" W	131.50
51	S 87° 07' 40" W	131.50
52	S 87° 07' 40" W	131.50
53	S 87° 07' 40" W	131.50
54	S 87° 07' 40" W	131.50
55	S 87° 07' 40" W	131.50
56	S 87° 07' 40" W	131.50
57	S 87° 07' 40" W	131.50
58	S 87° 07' 40" W	131.50
59	S 87° 07' 40" W	131.50
60	S 87° 07' 40" W	131.50
61	S 87° 07' 40" W	131.50
62	S 87° 07' 40" W	131.50
63	S 87° 07' 40" W	131.50
64	S 87° 07' 40" W	131.50
65	S 87° 07' 40" W	131.50
66	S 87° 07' 40" W	131.50
67	S 87° 07' 40" W	131.50
68	S 87° 07' 40" W	131.50
69	S 87° 07' 40" W	131.50
70	S 87° 07' 40" W	131.50
71	S 87° 07' 40" W	131.50
72	S 87° 07' 40" W	131.50
73	S 87° 07' 40" W	131.50
74	S 87° 07' 40" W	131.50
75	S 87° 07' 40" W	131.50
76	S 87° 07' 40" W	131.50
77	S 87° 07' 40" W	131.50
78	S 87° 07' 40" W	131.50
79	S 87° 07' 40" W	131.50
80	S 87° 07' 40" W	131.50
81	S 87° 07' 40" W	131.50
82	S 87° 07' 40" W	131.50
83	S 87° 07' 40" W	131.50
84	S 87° 07' 40" W	131.50
85	S 87° 07' 40" W	131.50
86	S 87° 07' 40" W	131.50
87	S 87° 07' 40" W	131.50
88	S 87° 07' 40" W	131.50
89	S 87° 07' 40" W	131.50
90	S 87° 07' 40" W	131.50
91	S 87° 07' 40" W	131.50
92	S 87° 07' 40" W	131.50
93	S 87° 07' 40" W	131.50
94	S 87° 07' 40" W	131.50
95	S 87° 07' 40" W	131.50
96	S 87° 07' 40" W	131.50
97	S 87° 07' 40" W	131.50
98	S 87° 07' 40" W	131.50
99	S 87° 07' 40" W	131.50
100	S 87° 07' 40" W	131.50



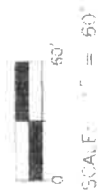
A RETRACEMENT SURVEY LOT 10, HEMELATA N PATEL, PAMELLA TERRACE, TYBEE ISLAND, CHATHAM COUNTY, GEORGIA

Surveyed For: **HEMELATA N PATEL**
PIN# 4-0003-03-001

MICHAEL J. GARDNER
REGISTERED LAND SURVEYOR
120 VARNEDOE AVENUE
GARDEN CITY, GEORGIA 31408
PHONE NUMBER (912) 661-0474
FIELD SURVEY DATE: 11/08/2017
DATE: 11/08/2017

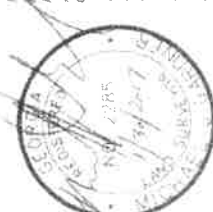
RECEIVED
NOV 08 2017
GA DNR / HMP

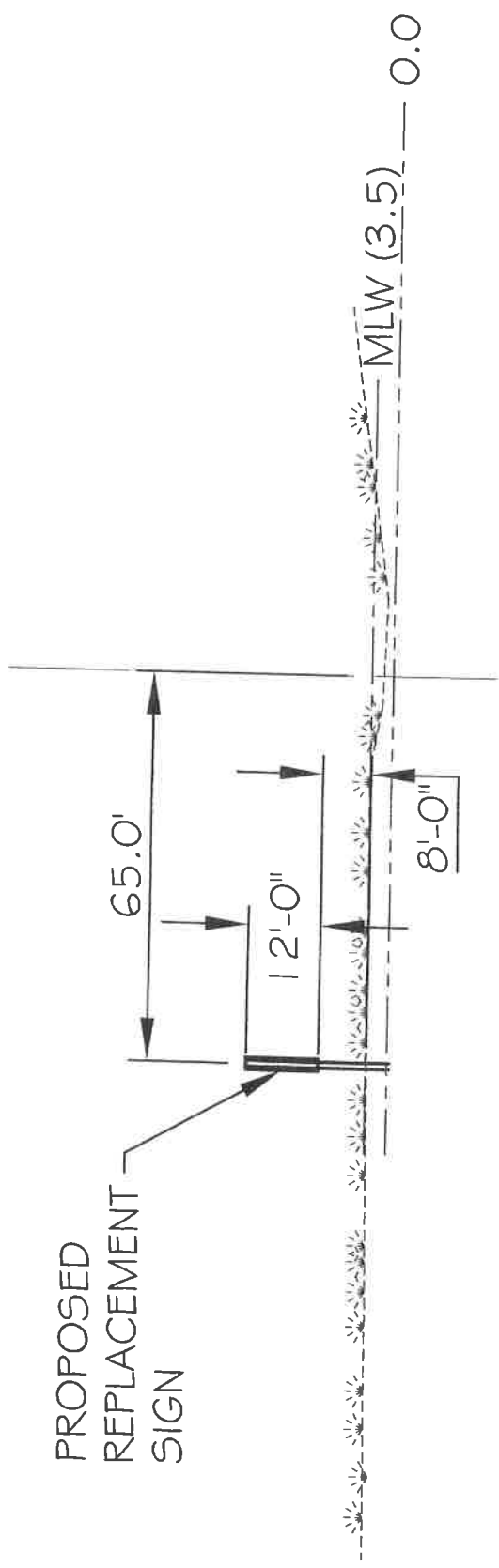
ERROR OF CLOSURE
FIELD 1/28,256
ANGULAR ERROR OF 0.3" PER
ANGLE POINT AND ADJUSTED
BY COMPASS METHOD
PLAT 17
EQUIPMENT TOPCON GTS2 16A
TOTAL STATION SINGLE ANGLE



THIS WILL CERTIFY THAT THE PROVISIONS RELATIVE TO GEORGIA CODE SECTION 15-6-67 (D) DO NOT REQUIRE APPROVAL OF THIS PLAT BY ANY GOVERNING AUTHORITY PRIOR TO THE RECORDING WITH THE CLERK OF SUPERIOR COURT.

THIS SURVEY WAS PREPARED IN CONFORMITY WITH THE TECHNICAL STANDARDS FOR PROPERTY SURVEYS IN GEORGIA AS SET FORTH IN CHAPTER 180-7 OF THE RULES OF THE GEORGIA BOARD OF REGISTRATION FOR PROFESSIONAL ENGINEERS AND LAND SURVEYORS AND AS SET FORTH IN THE GEORGIA PLAT ACT (O.C.G. 15-6-87).





SECTION
1" = 30'



SIGN REPLACEMENT/REPAIR PLANS

PREPARED FOR : HEMLATA N. PATEL
 102 COMPANION WAY
 SAVANNAH, GEORGIA 31419
 912-507-2509

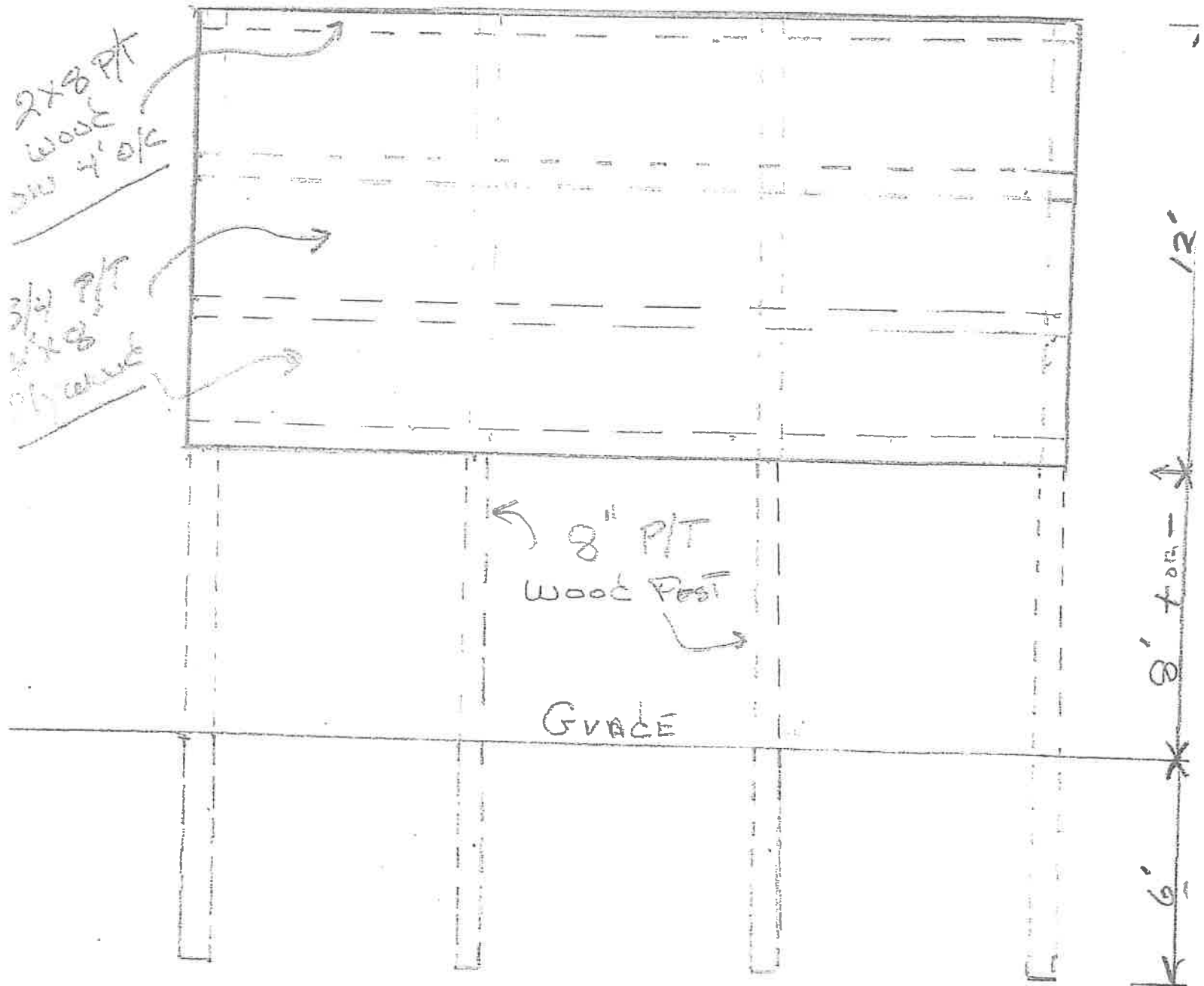
MAY 11 2017
 GA DNR / HMP

BOSWELL DESIGN SERVICES, INC.
 103 NASSAU DRIVE
 SAVANNAH, GEORGIA 31410
 (912) 897-6932
 LAHBOS@BELLSOUTH.NET

Job = Replace sign. ~~xxxxxx~~

LOT 10 DANIELA TERRACE

WE will HAVE to put down wood matts to cover



RECEIVED
MAY 11 2017
GA DNR / HMP