



RLC Project No.:	16-255
Figure No.:	1
Prepared By:	DB
Sketch Date:	1/12/2018
Map Scale :	1 inch = 1,000 feet

**Lodge Cottages**  
Glynn County, Georgia

**Vicinity Map**  
Prepared For: Sea Island Acquisition, LLC

**RLC**  
**RESOURCE+LAND**  
**CONSULTANTS**

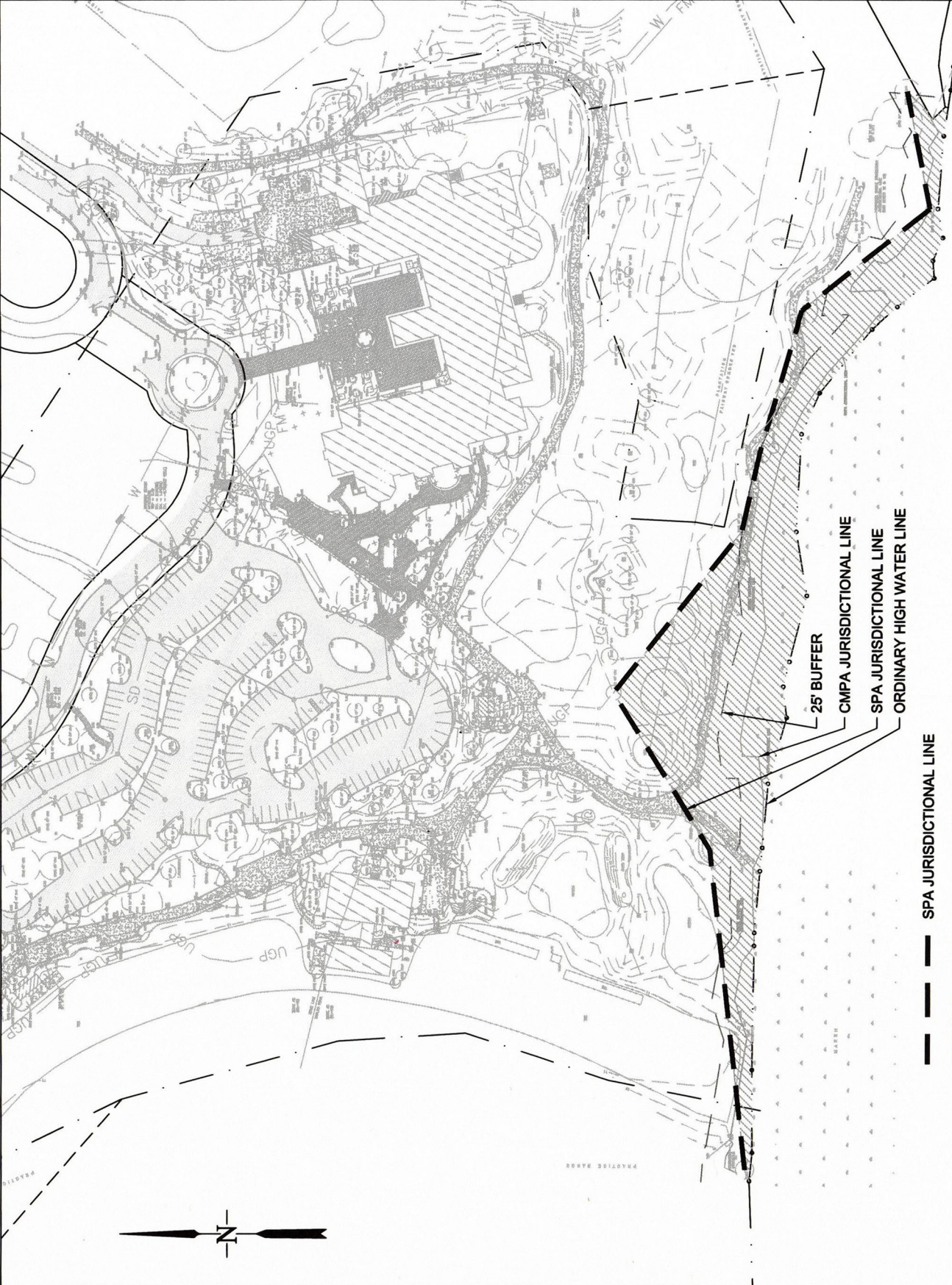
41 Park of Commerce Way, Ste. 300  
Savannah, Georgia 31305  
912-443-5896 www.rlcna.com

DATE: 2017-12-13  
DRAWN BY: GBM  
CHECKED BY: JDR  
PROJECT NO.: 17069  
SCALE: 1" = 150'

SPA EXHIBIT  
LODGE COTTAGES, GA  
SAINT SIMONS ISLAND, GA

PREPARED FOR:  
SEA ISLAND  
ACQUISITION, LLC

ROBERTS CIVIL ENGINEERING  
301 SEA ISLAND ROAD, SUITE 10  
ST. SIMONS, GA 31522  
912-638-9681 OFFICE  
912-289-0339 FAX



- SPA JURISDICTIONAL LINE
- - - CMPA JURISDICTIONAL LINE
- · - · - ORDINARY HIGH WATER LINE
- ▨ SPA JURISDICTIONAL AREA (1.83 ACRES)

25' BUFFER

CMPA JURISDICTIONAL LINE

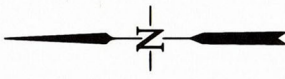
SPA JURISDICTIONAL LINE

ORDINARY HIGH WATER LINE

GA DNR

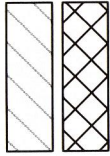
JAN 16 2018

Marsh & Shore Mgt. Program



- SPA JURISDICTIONAL AREA (1.83 AC)
- SPA ENCROACHMENT AREA  
(0.48 ACRES = 26% OF SPA AREA)
- SPA ENCROACHMENT AREA  
CART PATH REMOVAL = 0.11 AC
- SPA ENCROACHMENT AREA  
GRADING = 0.36 AC
- SPA ENCROACHMENT AREA  
STORM DRAINAGE = 0.01 AC

PROPOSED CONTOUR LINE  
EXISTING CONTOUR LINE



GA DNR

JAN 16 2018

Marsh & Shore Mgt. Program

**ROBERTS**  
**CANNON** growth by design  
**ENGINEERING**

2/2

DATE: 2017-12-13  
DRAWN BY: CBM  
CHECKED BY: JDR  
PROJECT NO.: 17069  
SCALE: 1" = 80'

SPA EXHIBIT  
LODGE COTTAGES,  
SAINT SIMONS ISLAND, GA

PREPARED FOR:  
SEA ISLAND  
ACQUISITION, LLC

ROBERTS CIVIL ENGINEERING  
301 SEA ISLAND ROAD, SUITE 10  
ST. SIMONS, GA 31522  
912-638-9681 OFFICE  
912-289-0339 FAX