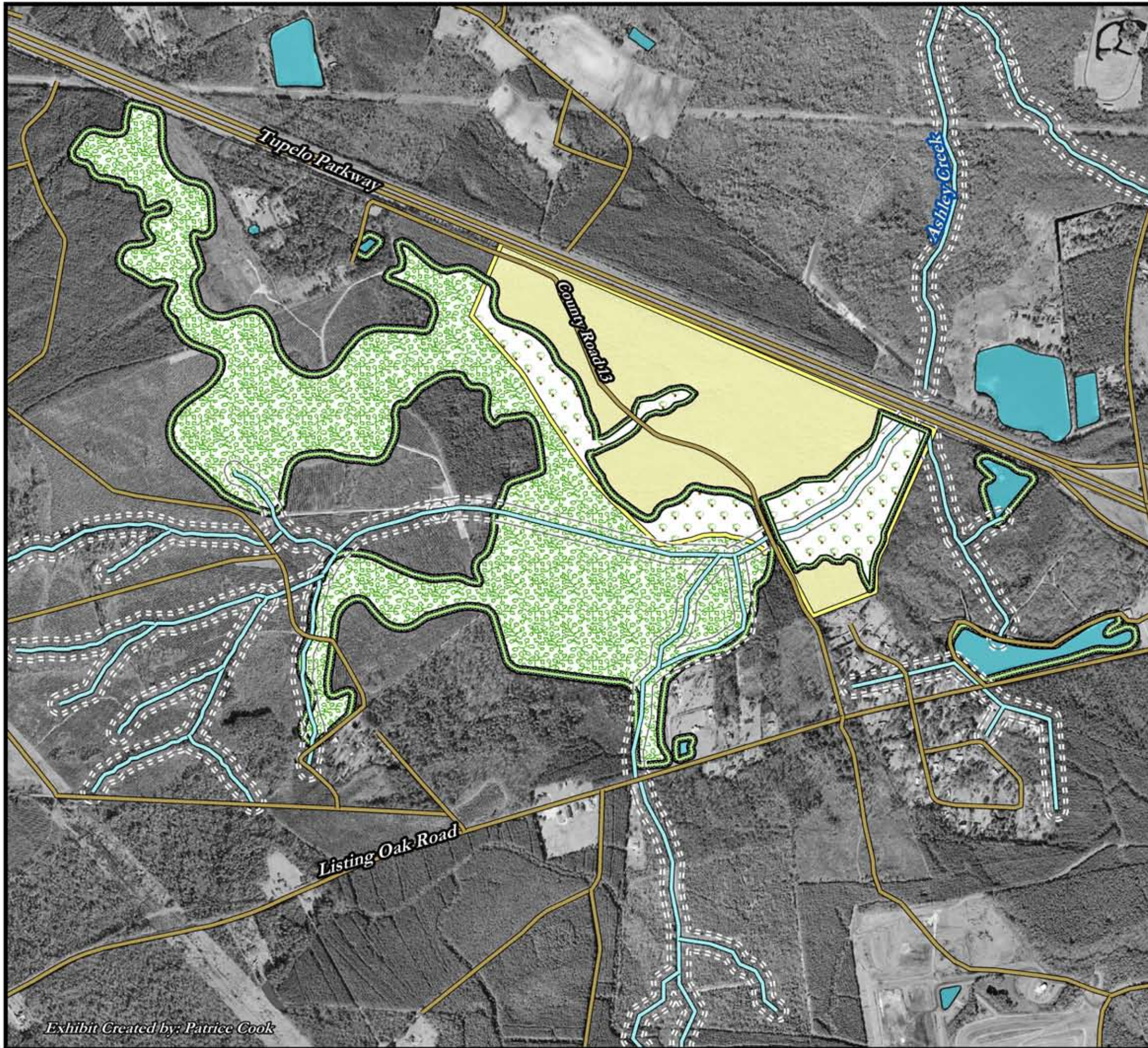


### Exhibit 11: Overall Composite: Buildable, Primary, & Secondary Conservation Areas

Figure 11 is a compilation of previously analyzed individual site characteristics. These features are classified into three main areas: Primary Conservation, Secondary Conservation, and Actual Buildable Area. Primary conservation areas include the Ashley Creek and the Bald Cypress Swamp. These areas are considered essential fish and plant habitat and should be preserved to the greatest extent possible. Secondary conservation areas denote areas to be considered during site design for additional protection such as poor soils, groundwater recharge areas, and downstream resources. By viewing an overlay of these conservation areas, a viable buildable area for the Tupelo Tract was determined and quantified. The "development envelope" consists of 124 acres, including standard setbacks and buffers, mostly located on the uplands, north of the Bald Cypress Swamp. The remaining portion of the property composes a preserved area of approximately 64 acres, almost all within Bald Cypress Swamp and Ashley Creek.



#### Primary Conservation Areas

- Bald Cypress Swamp
- Ashley Creek

#### Secondary Conservation Areas

- Buffered Area 64 Acres
- Wetland Buffer
- Stream Buffer

Actual Buildable Area: 124 Acres

- Tupelo Tract
- Lakes
- Roads

1 inch equals 1,000 feet



Exhibit Created by: Patrice Cook