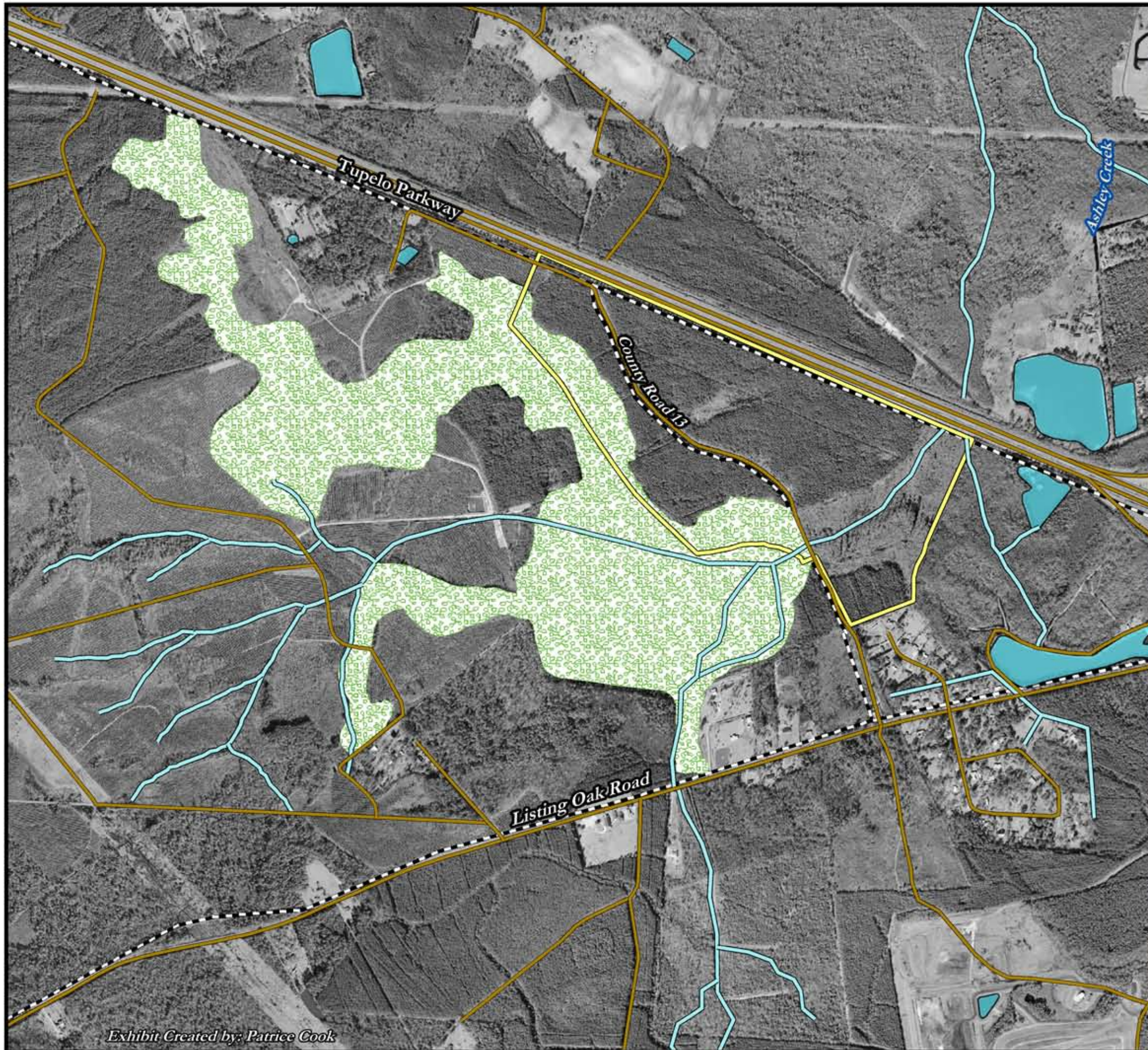


### Exhibit 2: Available Infrastructure

This exhibit is derived from the layering of 2002 transportation and 2003 utility information maintained and updated by Caleb County and the Georgia Department of Transportation (GDOT) with black and white aerial photography distributed by Earthdata International, Inc. This map shows the location of roads and existing utility easements in the immediate area. This exhibit was designed to reveal the available connections of the Tupelo Tract to existing gas and power easements.

Note the existing utility easement maintained by Caleb County running alongside the Tupelo Parkway and the property access road, County Road 13 which offers connection to municipal utilities such as electricity, gas, water, sewer, and transmission lines. With this infrastructure already in place, the monetary costs associated with the project decrease dramatically, as does the disturbance required to install them. Furthermore, the existing road crossing and utility easement also reduces the need for further environmental impacts to the wetland system, benefiting both the natural area and the developer by eliminating engineering, construction, and permitting costs associated with such impacts. In addition, County Road 13 provides connection to a main thoroughfare that runs up and down the entire Georgia coast. An interchange for the Tupelo Parkway is located within a 1/4 mile of the property; an indication the site is accessible yet somewhat secluded by adjacent natural areas.



- Tupelo Tract
- Lakes
- Roads
- Streams
- Bald Cypress Swamp
- Existing Utility Easement



1 inch equals 1,004 feet



Exhibit Created by: Patrice Cook