

Exhibit 4: Significant Landmarks & Other Sites of Interest

Parcel information compiled by Caleb County and data from the U.S. National Park Service was utilized to build this map. This exhibit reveals some sites of interest located in close proximity to the Tupelo Tract including nearby churches, cemeteries, historic sites, recreational areas, wildlife preserves and adjacent residential developments. Most features recorded on a plat are listed within the parcel layer and are available to the viewer instantly as a particular parcel is selected. Information within the parcel database was queried to determine the value of the subject properties and adjacent tracts, the owner information, zoning designation, deeded acreage, and significant landmarks in the immediate project vicinity. Historic sites and structures were located by querying the National Register of Historic Places (NRIS) database. In addition, archeological sites were identified using report data from the Georgia Archeological Site Files (GASF) database.

This map shows the Tupelo Tract is bordered on the west by the Ashley Creek Wildlife Preserve and to the southwest by McDonough Plantation, a national historic site where a historic 18th century tabby home and rice mill are located. Juniper Crossing, a residential community is located southeast of the tract and Waterton Park, a county recreational area located east of the Tupelo Tract. This map also assisted in planning for future green space areas and trail connections.

Sites of Interest

- | | |
|--|---|
|  McDonough Plantation
National Historic Site |  Tabby
Home Site |
|  Juniper Crossing
Residential Community |  Rice Mill |
|  Waterton Park
Recreational Area |  Regional
Trail
System |
|  Ashley Creek
Wildlife Preserve |  Juniper
Church |
|  Additional
Green Space Sited |  Lakes |
|  Juniper Creek
Cemetery |  Streams |
|  Tupelo Tract |  Roads |

1 inch equals 1,000 feet



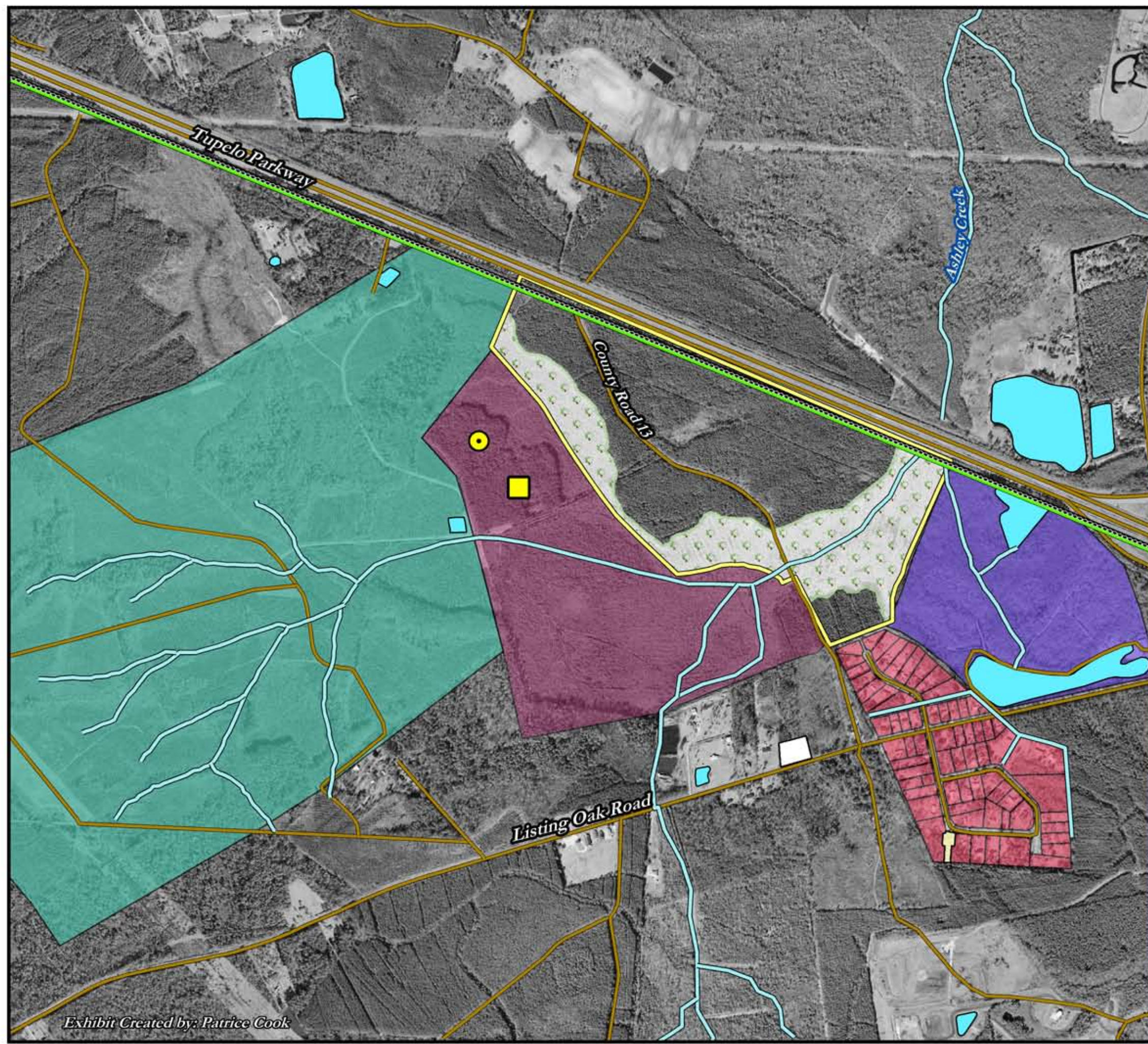


Exhibit Created by: Patrice Cook