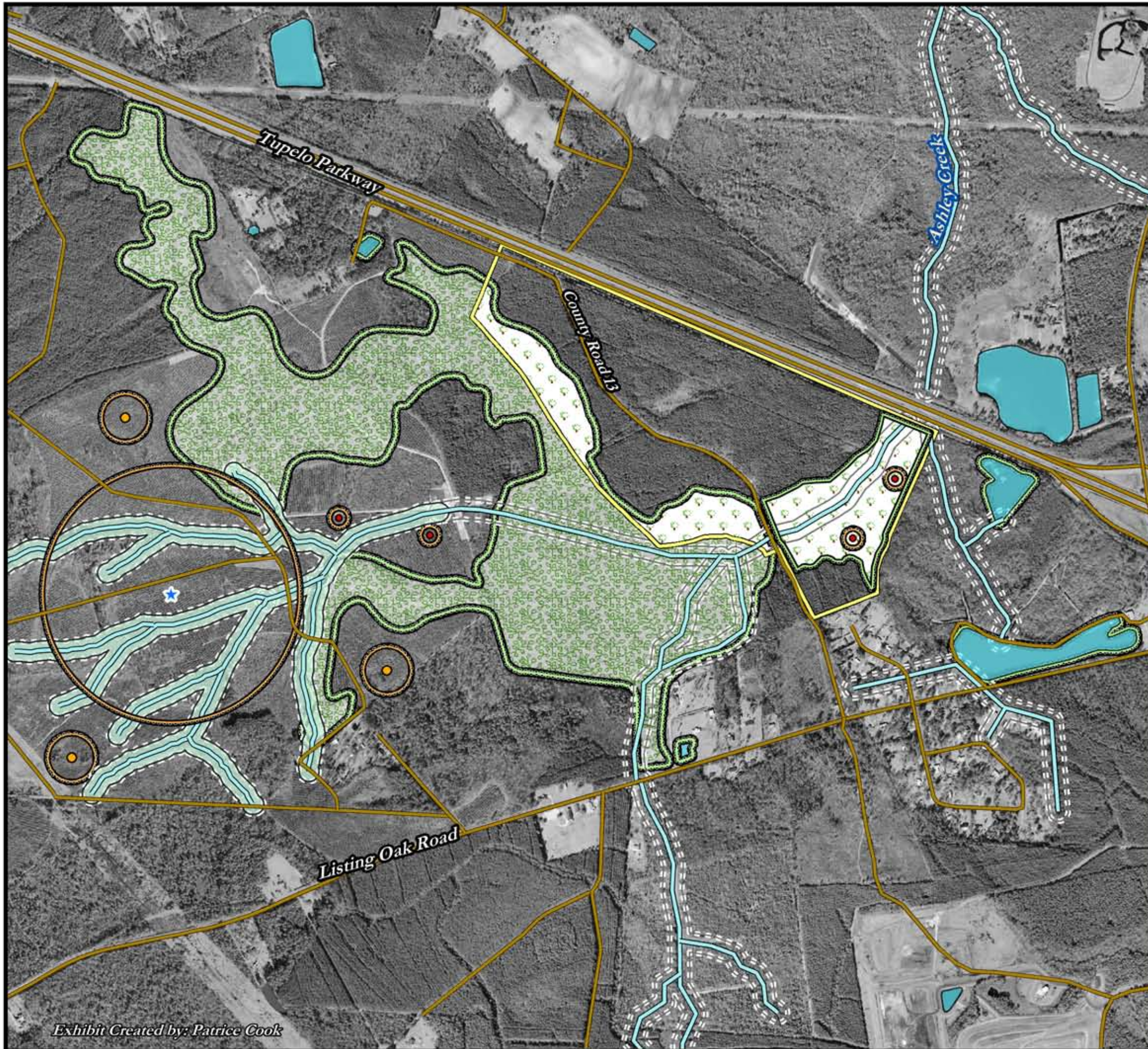


### Exhibit 9: Areas of Special Concern with Setbacks and Buffers

Exhibit 9 layers U.S. Fish & Wildlife Service (USFWS) maps of critical habitat and species of concern with federal, state, and county threatened and endangered species lists as well as actual field survey information conducted by the Ashley Creek Wildlife Preserve. This map was used to determine if species of concern and their critical habitats exist on the subject tract. Since the project site is located near a freshwater stream and a large system of bottomlands, essential habitat is available for potential threatened and endangered species. A threatened and endangered species survey was conducted for Ashley Creek Preserve and the immediate areas. GPS was used to locate and map the species and their habitat in the field. This information was then imported to GIS where it was viewed and manipulated to determine the amount of space required to sustain these species once the Tupelo Tract is developed.

Buffers are applied in varying widths to essential habitat including stream and wetlands depending on the habitat requirements of certain species. The state mandates a 50' buffer for streams that support or could support trout and 25' for other streams, lakes, and marshlands. In addition to these buffers, there are species of concern that require buffers of various widths for adequate protection. The Ashley Creek was subject to a 50' buffer due to the presence of protected fish downstream; the Bald Cypress Swamp requires a 25' buffer along its boundaries. In addition, there were several species of concern in the area that require buffers, including a Bald Eagle (1/4 mile), Gopher Tortoises (100'), and Hooded Pitcher Plants (25'). These buffered areas and the resources within them are considered primary and secondary conservation areas. These areas can be beneficial to a development as they form a large continuous green space available for recreational uses such as hiking and nature-watching.



	Hooded Pitcher Plants 25' Buffer		Bald Eagle's Nest 1/4 Mile Buffer
	Gopher Tortoise Burroughs 100' Buffer		Essential Fish Habitat
	Essential Fish Habitat		Buffered Area 64 Acres
	Buffered Area 64 Acres		Bald Cypress Swamp
	Bald Cypress Swamp		Tupelo Tract
	Tupelo Tract		Streams
	Streams		Lakes
	Lakes		Roads
	Roads		Protected Species Buffers
	Protected Species Buffers		Wetland Buffer 25'
	Wetland Buffer 25'		Stream Buffer 50'
	Stream Buffer 50'		

1 inch equals 1,000 feet

0 500 1,000 2,000 Feet

Exhibit Created by: Patrice Cook