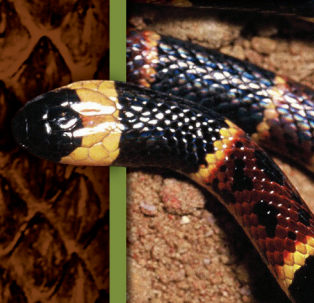



# VENOMOUS *Snakes*

OF GEORGIA





f the 47 species of snakes known from Georgia, only seven species are venomous: Copperhead (*Agkistrodon contortrix*), Northern and Florida Cottonmouth (*Agkistrodon piscivorus* and *Agkistrodon conanti*), Eastern Diamond-backed Rattlesnake (*Crotalus adamanteus*), Timber/Canebrake Rattlesnake (*Crotalus horridus*), Pigmy Rattlesnake (*Sistrurus miliarius*) and Eastern Coral Snake (*Micrurus fulvius*). No single venomous snake species is found over the entire state, and only a portion of the Georgia Coastal Plain is inhabited by all seven venomous species. Although differentiating among all 47 species can be difficult, becoming familiar with the colors and patterns of Georgia's seven venomous snake species will enable you to determine whether any snake encountered is venomous or non-venomous.

The information in this brochure is intended to aid in identifying the venomous snake species found in Georgia through the recognition of physical traits, pattern and color. Caution should be used when approaching any snake, and snakes found in the wild should only be handled by experienced people after proper identification. Although the possibility of incurring a venomous snake bite should be taken seriously, only the Timber Rattlesnake, Eastern Diamond-backed Rattlesnake and Cottonmouths realistically represent a serious threat to human life. That risk is remote when compared to other environmental hazards, such as lightning. According to the National Weather Service, 588 deaths due to lightning were recorded in the United States from 2002-2021, or an average of 29 deaths annually. According to the American Association of Poison Control Centers, only 46 venomous snake bites reported nationwide during the same period were fatal, an average of two fatalities a year.

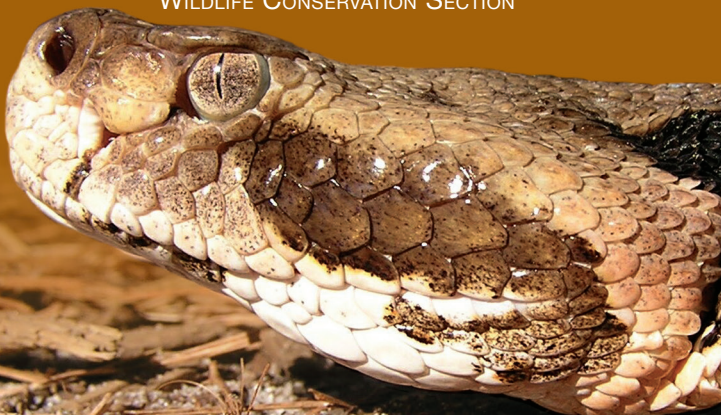
Despite the relatively low level of danger posed by venomous snakes, many people consider their fear, no matter how irrational, justification for killing any snake. Venomous and non-venomous snakes serve invaluable roles in the natural environment as predator and prey. In Georgia, it is illegal (a misdemeanor, punishable by up to a \$1,000 fine and a year in jail) to possess or kill many of the state's nongame wildlife species, including non-venomous snakes (O.C.G.A. §27-1-28). It is also illegal to disturb or destroy the dens, holes or homes of wildlife or use explosives, chemicals or other devices to drive wildlife, including venomous snakes, from those homes (O.C.G.A. §27-1-30).



**GEORGIA**  
DEPARTMENT OF NATURAL RESOURCES

**WILDLIFE RESOURCES DIVISION**

**WILDLIFE CONSERVATION SECTION**



# Quick Reference Guide

## to Georgia's *Non-venomous* Snakes



Rough Green Snake



Mud Snake



Rainbow Snake ●



Eastern Indigo Snake ●



Black Racer



Coachwhip



Eastern Rat Snake  
(Black Phase)



Eastern Rat Snake  
(Yellow Phase)



Gray Rat Snake



Pine Woods Snake ●



Eastern Kingsnake



Black Kingsnake



Corn Snake



Mole Kingsnake



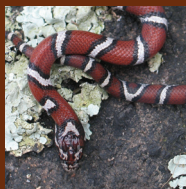
Florida Pine Snake ●



Eastern Hognose Snake



Southern Hognose Snake ●



Eastern Milk Snake ●



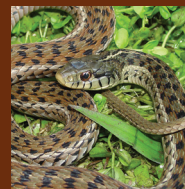
Scarlet Kingsnake



Scarlet Snake



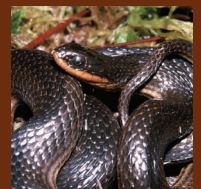
Eastern Ribbon Snake



Common Garter Snake



Striped Crayfish Snake ●



Glossy Crayfish Snake



Plain-bellied Watersnake



Banded Watersnake



Northern Watersnake



Brown Watersnake



Eastern Green  
Watersnake ●



Queen Snake



Black Swamp Snake ●



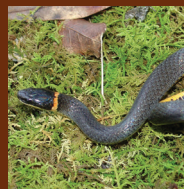
Brown Snake



Florida Brown Snake



Red-bellied Snake



Ringneck Snake



Southeastern  
Crowned Snake



Florida Crowned Snake ●



Smooth Earth Snake



Rough Earth Snake



Eastern Worm Snake



Brahminy Blind Snake

● **Federally Protected**

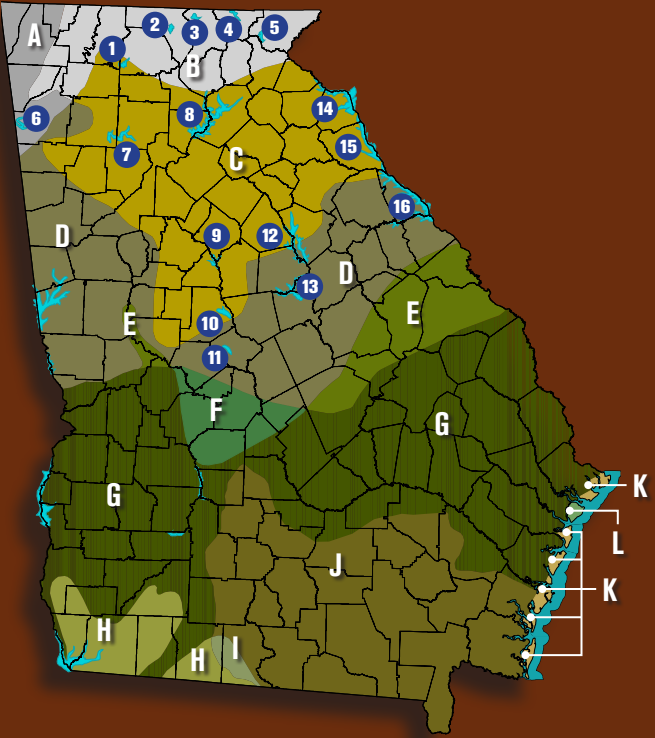
● **State-protected**

● **Species of Conservation Concern**

Recognizing a snake's color and pattern (presence or absence of encircling rings, bands, blotches or longitudinal stripes) may be the best way to identify Georgia's snake species, although the appearance of some can vary significantly by individual and geographic area. These photographs show a fairly characteristic example of each species but do not account for variations in appearance. Also, the young of several species, such as the Eastern Rat Snake and Black Racer, are more boldly patterned than adults.

# Distribution of Venomous Snakes in Georgia

	A	B	C	D	E	F	G	H	I	J	K	L
Copperhead	•	•	•	•	•	•	•	•				
Cottonmouths	•			•	•	•	•	•	•	•	•	•
E. Diamond-backed Rattlesnake						•	•	•	•	•	•	•
Timber Rattlesnake	•	•	•	•	•	•	•			•	•	•
Pigmy Rattlesnake			•	•	•	•	•	•	•	•		
Eastern Coral Snake					•		•	•	•	•		•



## Major Georgia reservoirs on the edge or outside of the known range of Cottonmouths

Carters Lake	1	Lake Burton	5	Jackson Lake	9	Lake Sinclair	13
Blue Ridge Lake	2	Weiss Lake	6	Lake Juliette	10	Lake Hartwell	14
Nottely Lake	3	Allatoona Lake	7	Lake Tobesofkee	11	Lake Russell	15
Chatuge Lake	4	Lake Lanier	8	Lake Oconee	12	Clarks Hill Lake	16



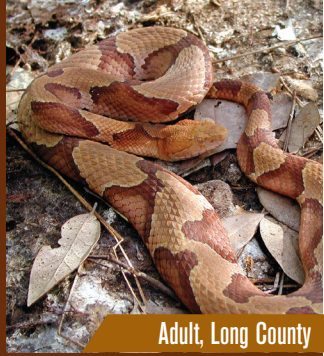
**CAUTION:** Species ranges depicted reflect knowledge of venomous snake distribution as of 2018. Range margins are estimated and people using this brochure should be cautious when approaching any snake that has not been identified.



# Copperhead, Highland Moccasin

*Agkistrodon contortrix*

**DESCRIPTION:** Medium-sized snakes reaching a maximum length of about 4.5 feet, but most are less than 3 feet. The background coloration is usually light brown or gray, but individuals range from rusty orange to pinkish to nearly black. This species is easily identifiable by a pattern of 10-21 dark-brown hourglass or saddle-shaped crossbands, which are wider at the sides of the body and become narrower along the back.



Adult, Long County



Adult, Floyd County



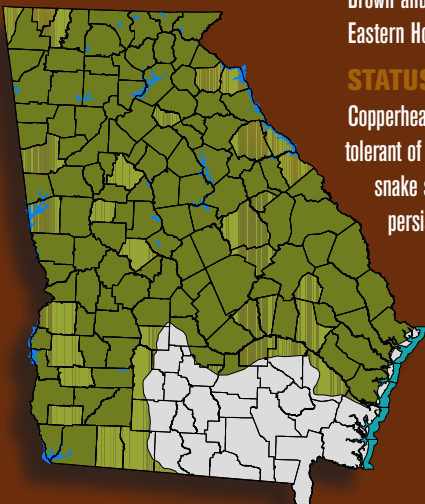
Juvenile, McIntosh County

**HABITAT:** Occur in most forested habitats but are particularly common on rocky wooded hillsides in the mountains and swamp and river edges in the Piedmont and Coastal Plain. Habitats with abundant logs, leaf litter, and rocks for cover are favored, while open habitats such as old fields and agricultural areas are generally avoided.

## NON-VENOMOUS SPECIES OFTEN CONFUSED WITH:

Gray Rat Snake; Eastern Rat Snake (yellow phase); Corn Snake; Northern, Brown and Banded Watersnakes; Eastern Hognose Snake.

**STATUS:** Uncommon to common. Copperheads are apparently more tolerant of urban development than many snake species. Populations often persist in suburban neighborhoods as long as some patches of forest remain.



Predicted Species Range 

Documented County 

Occurrence 

Outside of Species Distribution 



# Cottonmouth, Water Moccasin

*Agkistrodon piscivorus* & *Agkistrodon conanti*

**DESCRIPTION:** Relatively large, heavy-bodied snakes reaching a maximum length of nearly 6 feet, but most are less than 3 feet, 3 inches. Although these snakes are characterized by wide, dark bands along the body on a lighter brown or olive-colored background, individual coloration varies within and among populations. As Cottonmouths mature, many become very dark and the bands become totally obscured.



Adult, Liberty County

Many biologists consider cottonmouths to consist of two species – Northern and Florida cottonmouth – but differentiating the species and their geographic distributions is difficult.



Adult, Liberty County

**HABITAT:** Semi-aquatic. Cottonmouths prefer swamp-like habitats and can be very abundant in these areas. Sometimes found along rivers or in more open areas such as around large lakes. Also, these snakes may move overland long distances and can sometimes be found far from any water source. They generally hibernate in dry, upland areas, often in stump holes.

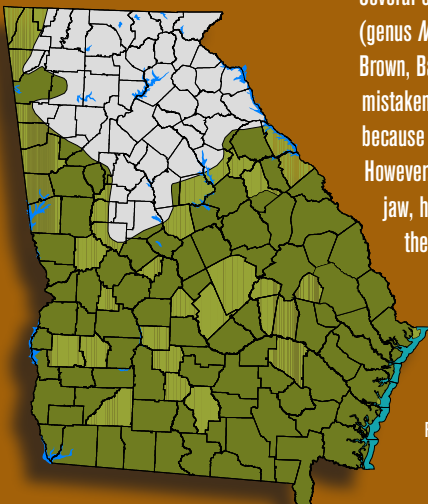


Juvenile, Liberty County

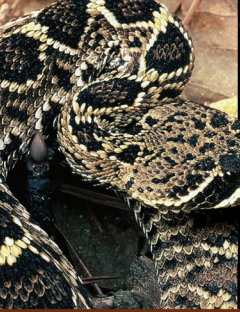
## NON-VENOMOUS SPECIES OFTEN CONFUSED WITH:

Several species of the large watersnakes (genus *Nerodia*; Plain-bellied, Northern, Brown, Banded and Green) are often mistakenly referred to as Cottonmouths because of their similarity in appearance. However, the dark stripe on the side of the jaw, heat-sensing pit on the face and the behavior of gaping – a defensive posture where the snake opens its mouth wide – are distinctive to Cottonmouths.

**STATUS:** Abundant.



- Predicted Species Range (Combined)
- Documented County Occurrence
- Outside of Species Distribution



# Eastern Diamond-backed Rattlesnake

*Crotalus adamanteus*

**DESCRIPTION:** Georgia's heaviest-bodied and one of the state's longest snakes, reaching or possibly exceeding 7 feet, but more typically measuring 3-5 feet in total length. The tail has 3-10 brown and white bands and a "rattle" (one or more loose rings of hard keratin) that makes a loud whirring noise when shaken. Upper surface of the body is patterned by a long row of 24-35 dark brown, diamond-like blotches fringed by thin yellow to cream borders. These blotches are broader than long and are linked together at their tips.



Adult, Thomas County



Tail and Rattle

**HABITAT:** Eastern Diamond-backed Rattlesnakes occupy upland habitats with an open canopy, especially native longleaf pine forests on sandhills, clay hills and flatwoods. Found in numbers on barrier islands, especially within inter-dune meadows containing dense bunch grasses alternating with shrub thickets

and in the dense edges of saltmarsh. Also found in mixed pine-hardwood forests that develop on abandoned agricultural sites, and in and around open woodlots, brushy pasture borders and abandoned homesites in suburban and rural areas. However, these snakes almost never enter houses.

**STATUS:** Rare, Georgia Species of Concern. Human impacts have caused the species to decline throughout its range. Habitat loss, fragmentation and degradation are the most serious threats to the species because its upland habitats are in high demand for agriculture, silviculture and residential development. Unfortunately, these rattlesnakes are killed by most people whenever they are encountered. The once widespread (and now illegal) practice of gassing Gopher Tortoise burrows to kill rattlesnakes or evict them for use in "rattlesnake roundups" often harms this species, and is a detriment to the large assemblage of up to 300 other animal species that use tortoise burrows.



Predicted Species Range ■  
Documented County Occurrence ■  
Outside of Species Distribution ■



# Timber/Canebrake Rattlesnake

*Crotalus horridus*

**DESCRIPTION:** Large, heavy-bodied snakes reaching a maximum length of nearly 6 feet in the Coastal Plain and about 5 feet in the mountains, but most range from 3-5 feet in length. The background color ranges through various shades of pink, yellow, tan, gray, brown and olive to velvety black. A series of brown to black chevron-shaped crossbands (15-34) typically cross the body. The tail is black and tipped by a segmented rattle. Very dark or solid black individuals are common in higher mountains of the northeastern part of the state but are rare elsewhere.



Adult, Lumpkin County



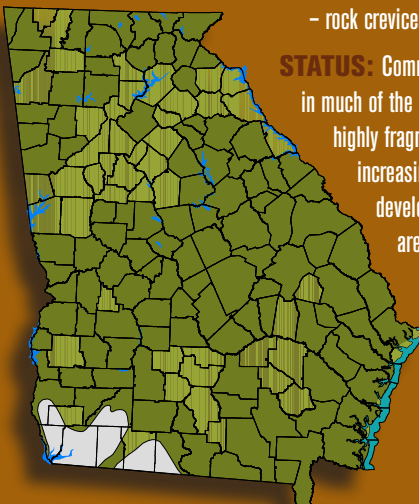
Adult, Liberty County



Tail and Rattle

**HABITAT:** Common in much of the heavily wooded country of the Coastal Plain, but in more open areas these snakes are primarily limited to wooded stream corridors. The range is spotty on the barrier islands and along the immediate coast. In the Piedmont, distribution is highly fragmented due to habitat loss and Timber Rattlesnakes are primarily associated with heavily wooded stream corridors and small, isolated mountains. In the Georgia mountains, the distribution is somewhat localized around suitable denning sites (including root and stump holes, mammal burrows, old home sites and debris piles, and – especially in upland regions – rock crevices).

**STATUS:** Common (locally abundant). Common in much of the Coastal Plain but the range is highly fragmented in the Piedmont and under increasing pressure from residential development. Timber Rattlesnakes are hunted to some extent in the mountains, where in many areas they appear to have declined in recent years.



Predicted Species Range

Documented County Occurrence

Outside of Species Distribution



# Pigmy Rattlesnake

*Sistrurus miliarius*

**DESCRIPTION:** Smallest of the rattlesnakes, with the maximum total length reported of 31 inches, but pigmy rattlesnakes usually reach a size of 16-23 inches. The background color is usually gray or tan, but occasional individuals can be reddish or almost black in some populations. The pattern consists of a series of light-edged dark blotches or spots (22-45) on the back, as well as from one to three rows of dark spots on the sides. There may be a reddish stripe down the center of the back. The tail is tipped by a segmented rattle; however, the interlocking segments of the rattle are poorly notched compared to other rattlesnakes, and occasionally some individuals lack a rattle.

**HABITAT:** Found in a variety of habitats at elevations of 0-1,640 feet and ranging from dry sandhills and longleaf pine forests to wet hammocks and seasonally flooded pine flatwoods. In southern Georgia, Pigmy Rattlesnakes specifically thrive in saw palmetto thickets.

**NON-VENOMOUS SPECIES OFTEN CONFUSED WITH:** Eastern and Southern Hognose snakes.

**STATUS:** Uncommon. In some areas, population densities of these rattlesnakes are very high, while in other places Pigmy Rattlesnakes are fairly uncommon. However, this species is small and cryptic, and chances are that many individuals are overlooked.



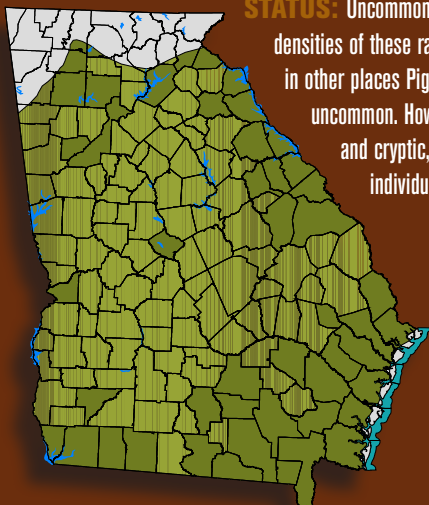
Adult, Lincoln County



Adult, Long County



Tail and Rattle



Predicted Species Range ■  
Documented County Occurrence ■  
Outside of Species Distribution ■



# Eastern Coral Snake

*Micrurus fulvius*

**DESCRIPTION:** Fairly slender snakes reaching a maximum length of 47 inches, but most range from 20-30 inches long. The body is patterned with broad black and red rings, equal in width and separated by narrow yellow rings. The red rings are dotted with numerous black flecks that may coalesce on the back into a pair of spots. The rounded snout is black and is followed by a broad yellow band across the head and neck. The tail has three or four broad black rings and two to four narrow yellow rings.



Adult, Long County

**HABITAT:** Coastal Plain populations are typically associated with sandy upland habitats such as longleaf pine sandhills and pine-saw palmetto flatwoods. Live oak and other hardwood hammocks on well-drained soils may also support populations. Eastern Coral Snakes are absent from extensive wetlands and from vast tracts of pine flatwoods underlain by low, poorly-drained soils. Individuals lead highly subterranean lives and shelter in virtually any type of underground refuge, including Gopher Tortoise burrows and stump holes.

## NON-VENOMOUS SPECIES OFTEN CONFUSED WITH:

The Scarlet Kingsnake also has a color pattern of contrasting red, black and yellow or white rings but has a red snout, and the light-colored rings are separated from the red ones by black. The Scarlet Snake has a red, pointed snout; red back blotches that are outlined by black; and a white, unmarked belly. A helpful rhyme to distinguish Eastern Coral Snakes goes, "Red touch yellow, deadly fellow; red touch black, venom lack."

## STATUS: Rare, Georgia Species of Concern.

This species is generally distributed and seemingly fairly common in the lower and middle Coastal Plain of southeastern Georgia. Its status in the Piedmont, upper Coastal Plain and in the southwestern portion of the state is poorly known.



Predicted Species Range 

Documented County 

Occurrence 

Outside of Species Distribution 

For additional information, please contact:



WILDLIFE RESOURCES DIVISION

WILDLIFE CONSERVATION SECTION

116 Rum Creek Drive, Forsyth GA 31029

**478-994-1438**

[www.georgiawildlife.com](http://www.georgiawildlife.com)

Production and printing of this brochure made possible by:



**T.E.R.N.**

The Environmental Resources Network

Friends of Georgia's Nongame & Endangered Wildlife Program



UNIVERSITY OF GEORGIA

**EXTENSION**



## IN CASE OF VENOMOUS SNAKE BITE

- 1. STAY CALM.** Get the patient to the nearest hospital right away! Call 911 or the Georgia Poison Center (1-800-222-1222) immediately.
- 2. TRY TO IDENTIFY THE SNAKE BY SIGHT ONLY.** Look for color, patterns and head shape.
- 3. DO NOT TRY TO KILL THE SNAKE;** it could bite again.
- 4. KEEP THE PATIENT CALM AND IMMOBILE** (preferably lying down).
- 5. KEEP THE AFFECTED LIMB AT AN EVEN LEVEL** with the rest of the body.
- 6. DO NOT GIVE THE PATIENT FOOD, DRINK, OR MEDICATION** (e.g., pain medications, alcohol, etc.).
- 7. DO NOT USE A TOURNIQUET.**
- 8. DO NOT CUT THE WOUND.**
- 9. DO NOT TRY TO SUCK OUT THE VENOM.**
- 10. DO NOT PACK THE WOUND IN ICE.**  
Bites from non-venomous snakes should be washed with warm soapy water; a tetanus shot may be needed.

Courtesy of **Georgia Poison Center**  
[www.georgiapoisoncenter.org](http://www.georgiapoisoncenter.org)

Species distribution, range maps and species information are attributed to the Georgia Herp Atlas Project and Georgia Department of Natural Resources.

**Content:** K. H. Andrews, M. E. Dorcas, M. Elliott, T. M. Floyd, J. W. Gibbons, X. Glaudas, W. H. Martin, D. B. Means, R. A. Moulis, P. Spivey, D. J. Stevenson, J. D. Willson

**Photos:** R. Bartlett, G. Beaton, R. Birkhead, S. Collins (CNAH), A. Day, T. M. Floyd, S. Graham, G. Greer, R. Gunwald, P. Hill, G. Hilliard, J. B. Jensen, B. Johnston, K. Krysko, T. Luhring, G. Miller, P. Spivey, D. J. Stevenson, D. Steen