

VICINITY MAP

GA DNR CHAMPNEY BOAT RAMP

PROPOSED ACTIVITY: BOAT RAMP

ALTAMAHA RIVER, BRUNSWICK GA

Applicant: GEORGIA DNR

Date: 01/03/2023

County: MCINTOSH

JOB#: 22-1010

DATUM: NAVD88

SCALE: 1" = 2 MILE

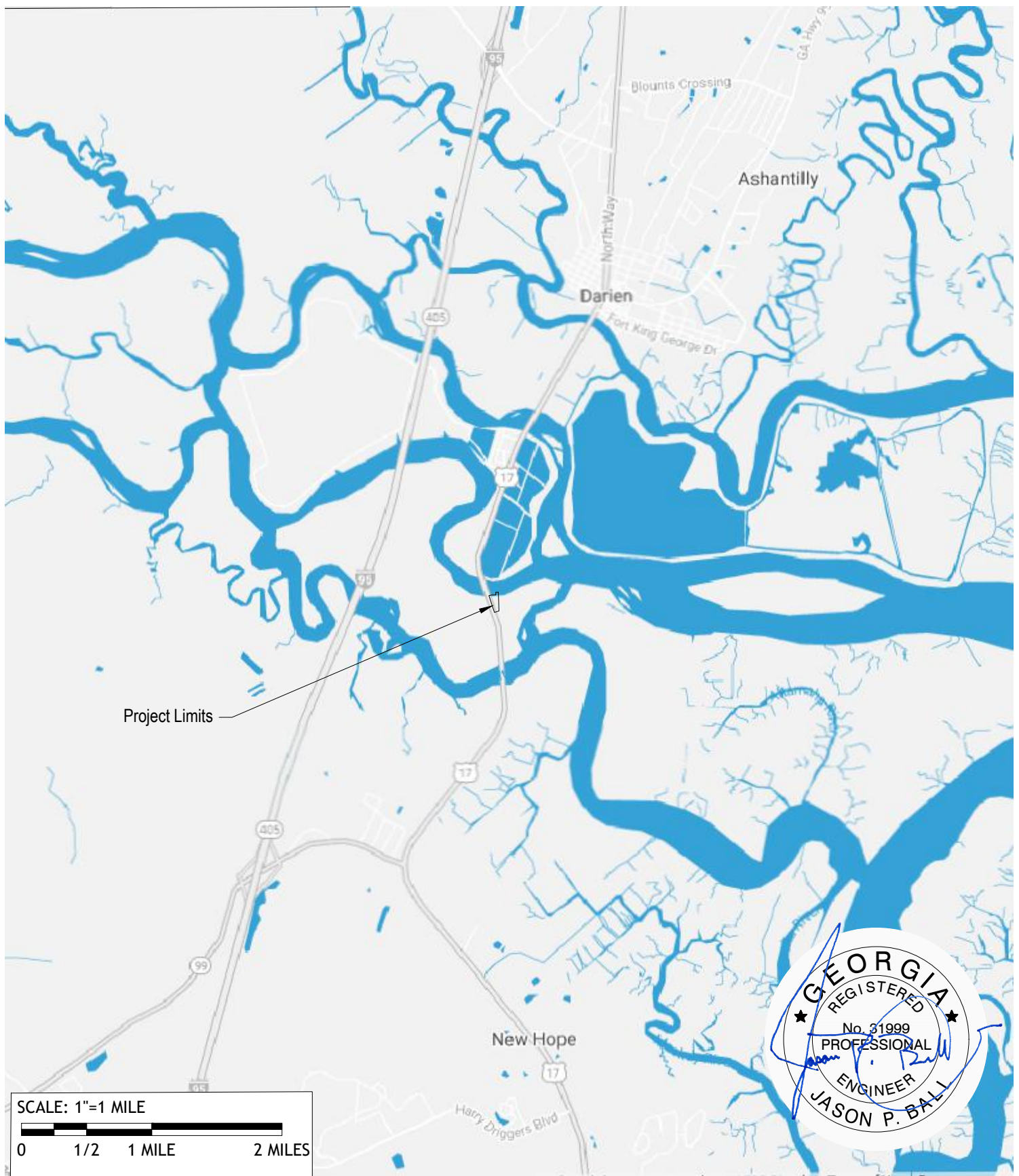
SHEET: 1 of 17



Ball Maritime Group, LLC

4 Cedar View Court | Savannah, Georgia | 31410 | (912) 662-2914
www.ballmaritime.com

Copyright © 2020



LOCATION MAP

GA DNR CHAMPNEY BOAT RAMP

PROPOSED ACTIVITY: BOAT RAMP

ALTAMAHA RIVER, BRUNSWICK GA

Applicant: GEORGIA DNR

Date: 01/03/2023

County: MCINTOSH

JOB#: 22-1010

SCALE: 1" = 1 MILE

DATUM: NAVD88

SHEET: 2 of 17



Ball Maritime Group, LLC

4 Cedar View Court | Savannah, Georgia | 31410 | (912) 662-2914
www.ballmaritime.com

Copyright © 2020



EXISTING FLOATING DOCK
EXISTING CONCRETE WALKWAY

EXISTING BOARDWALK

EXISTING BOAT RAMP

EXISTING PARKING

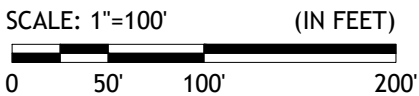
CARS: 62
TRAILER: 24

CMPA JURISDICTION LINE

50 FT MARSHLAND BUFFER

EXISTING 50' MARSHLAND BUFFER IMPACT	
IMPACT TYPE	AREA (SF)
IMPERVIOUS AREA IMPACT INSIDE BUFFER	42,291
IMPERVIOUS AREA ABOVE BUFFER (UPLAND)	58,839
PERVIOUS AREA ABOVE BUFFER (UPLAND)	7,500

EXISTING SURFACE TYPES	
SURFACE TYPE	AREA (SF)
PERVIOUS	
GRASS ISLANDS	7,500
IMPERVIOUS	
ASPHALT PARKING AREA	97,686
SIDEWALK	3,444
IMPERVIOUS TOTAL	101,130
TOTAL	108,630



EXISTING CONDITIONS

GA DNR CHAMPNEY BOAT RAMP

PROPOSED ACTIVITY: BOAT RAMP

ALTAMAHA RIVER, BRUNSWICK GA

Applicant: GEORGIA DNR

Date: 01/03/2023

County: MCINTOSH

JOB#: 22-1010

SCALE: 1" = 100'

DATE: NAVD88

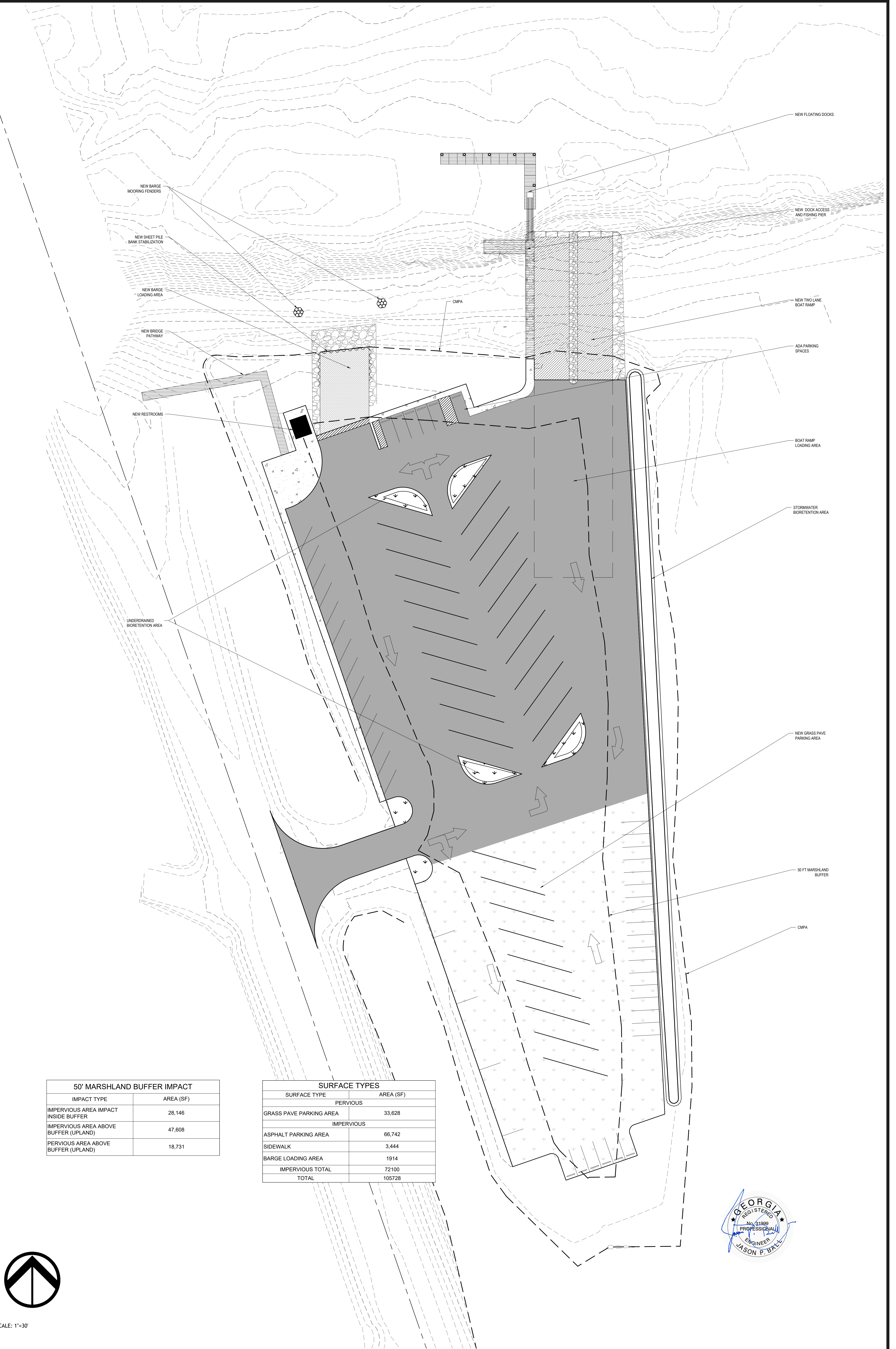
SHEET: 3 of 17



Ball Maritime Group, LLC

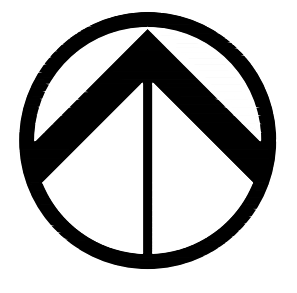
4 Cedar View Court | Savannah, Georgia | 31410 | (912) 662-2914
www.ballmaritime.com

Copyright © 2020



50' MARSHLAND BUFFER IMPACT	
IMPACT TYPE	AREA (SF)
IMPERVIOUS AREA IMPACT INSIDE BUFFER	28,146
IMPERVIOUS AREA ABOVE BUFFER (UPLAND)	47,608
PERVIOUS AREA ABOVE BUFFER (UPLAND)	18,731

SURFACE TYPES	
SURFACE TYPE	AREA (SF)
PERVIOUS	
GRASS PAVE PARKING AREA	33,628
IMPERVIOUS	
ASPHALT PARKING AREA	66,742
SIDEWALK	3,444
BARGE LOADING AREA	1,914
IMPERVIOUS TOTAL	72,100
TOTAL	105,728

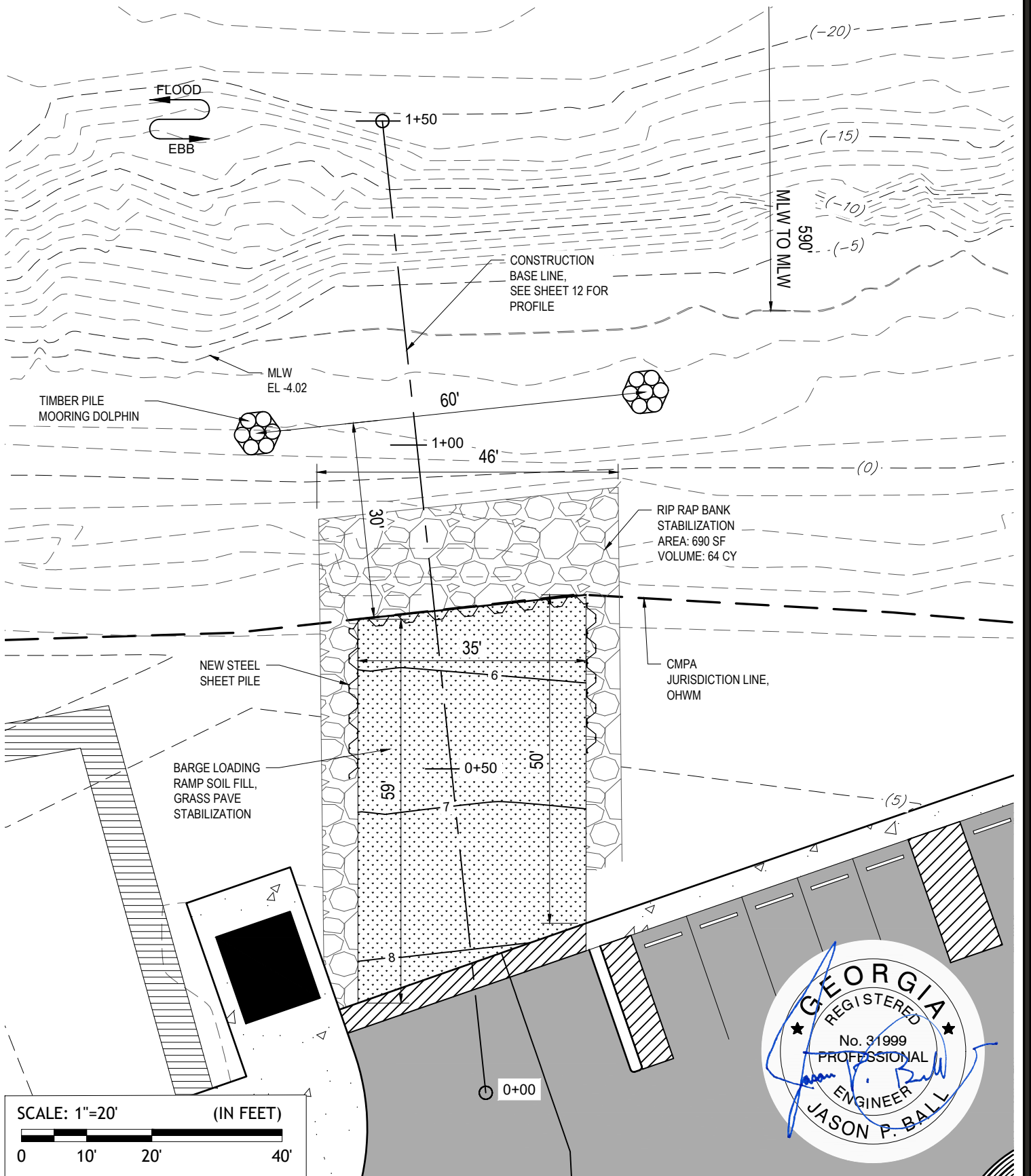


SCALE: 1"=30'

SITE LAYOUT FULL-PORTRAIT DNR CHAMPNEY BOAT RAMP
 ALTAMAHA RIVER, BRUNSWICK GA
 Applicant: GEORGIA DNR
 Date: 01/03/2023
 County: MCHWTSW
 JOB#: 23-1010 DATUM: NAVD83
 SCALE: 1" = 30' SHEET: 4 of 17

GENERAL NOTES:

Ball Maritime Group, LLC
 4 Cedar View Court | Savannah, Georgia | 31410 | (912) 662-2914
 www.ballmaritime.com Copyright © 2020



BANK IMPROVEMENTS

GA DNR CHAMPNEY BOAT RAMP

PROPOSED ACTIVITY: BOAT RAMP

ALTAMAHA RIVER, BRUNSWICK GA

Applicant: GEORGIA DNR

Date: 01/03/2023

County: MCINTOSH

JOB#: 22-1010

SCALE: 1" = 20'

DATUM: NAVD88

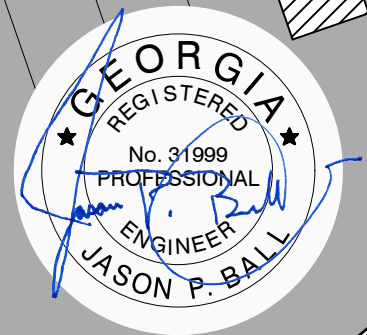
SHEET: 5 of 17

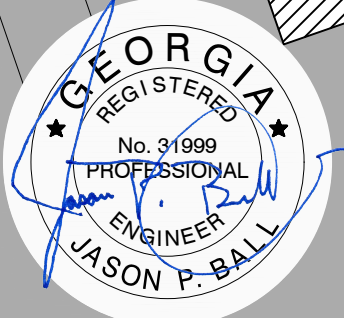
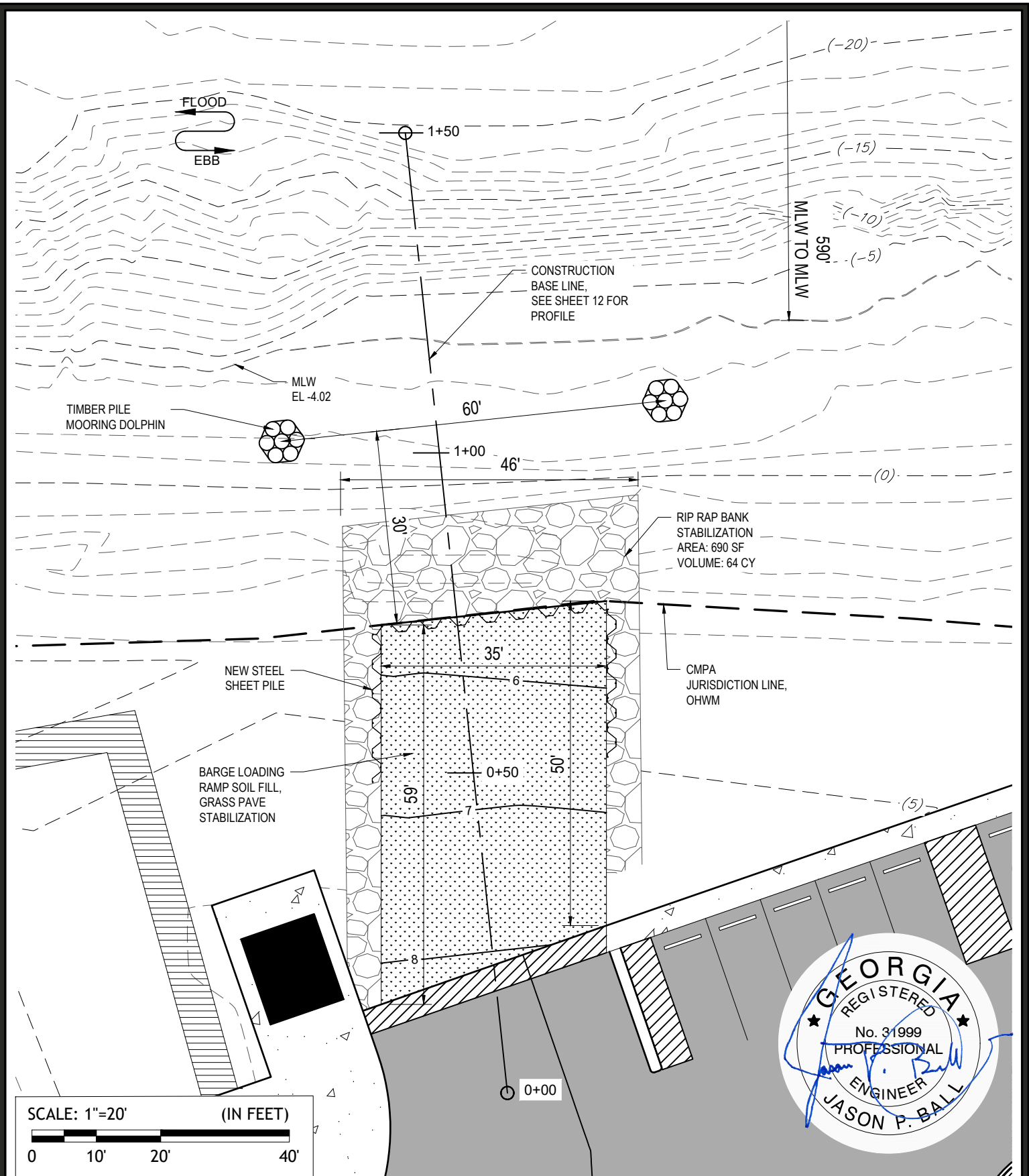


Ball Maritime Group, LLC

4 Cedar View Court | Savannah, Georgia | 31410 | (912) 662-2914
www.ballmaritime.com

Copyright © 2020





BARGE DOLPHINS **GA DNR CHAMPNEY BOAT RAMP**
PROPOSED ACTIVITY: BOAT RAMP **ALTAMAHA RIVER, BRUNSWICK GA**

Applicant: **GEORGIA DNR**
 Date: **01/03/2023**
 County: **MCINTOSH**
 JOB#: **22-1010** DATUM: **NAVD88**
 SCALE: **1" = 20'** SHEET: **6 of 17**



Ball Maritime Group, LLC
 4 Cedar View Court | Savannah, Georgia | 31410 | (912) 662-2914
 www.ballmaritime.com Copyright © 2020

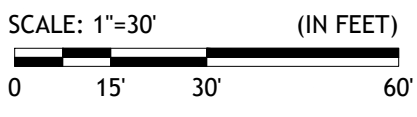
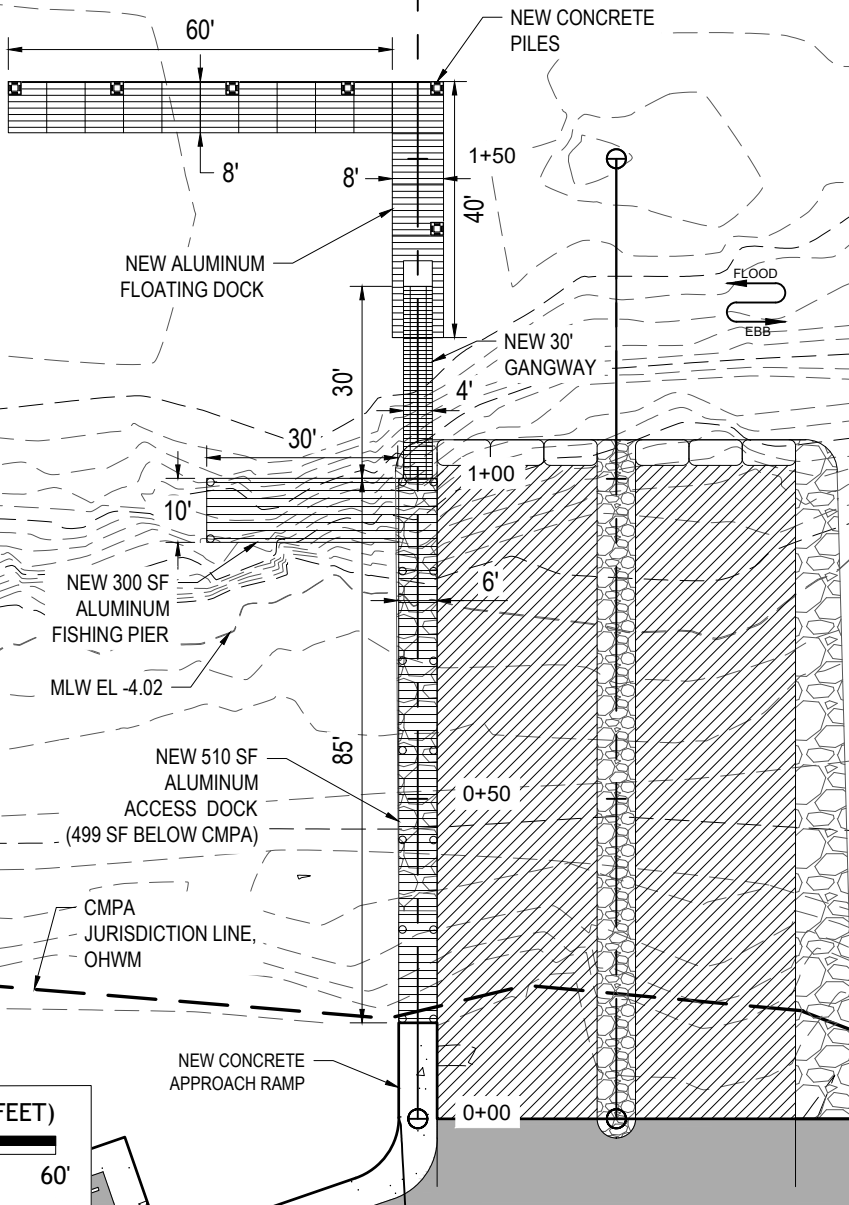


CONSTRUCTION
BASE LINE,
SEE SHEET 11 FOR
PROFILE

2+00

MLW TO MLW
590'

91'
TO MLW



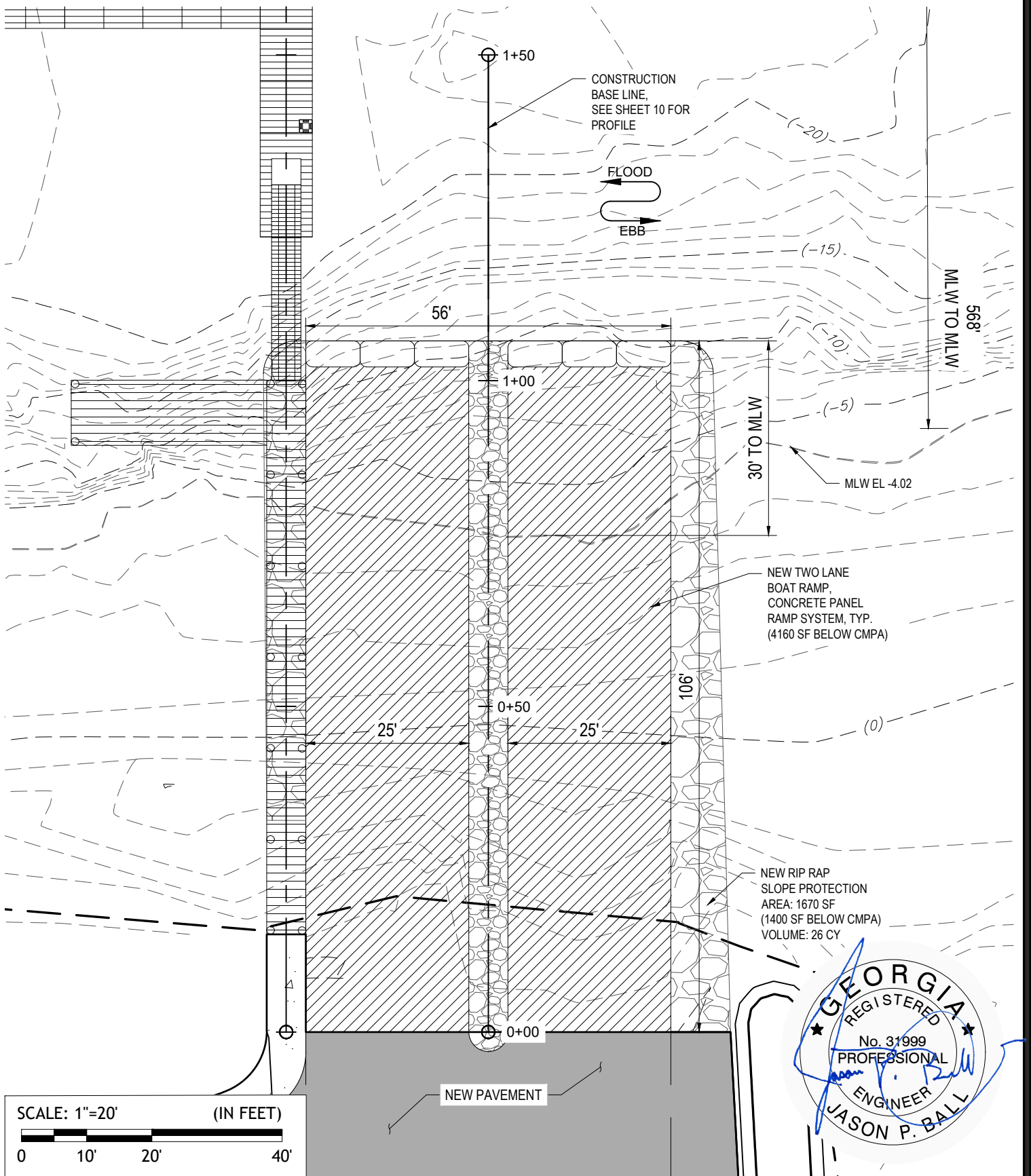
DOCK IMPROVEMENTS **GA DNR CHAMPNEY BOAT RAMP**

PROPOSED ACTIVITY: BOAT RAMP **ALTAMAHA RIVER, BRUNSWICK GA**

Applicant: **GEORGIA DNR**
 Date: **01/03/2023**
 County: **MCINTOSH**
 JOB#: **22-1010** **DATUM: NAVD88**
 SCALE: **1" = 30'** **SHEET: 7 of 17**



Ball Maritime Group, LLC
 4 Cedar View Court | Savannah, Georgia | 31410 | (912) 662-2914
 www.ballmaritime.com
 Copyright © 2020

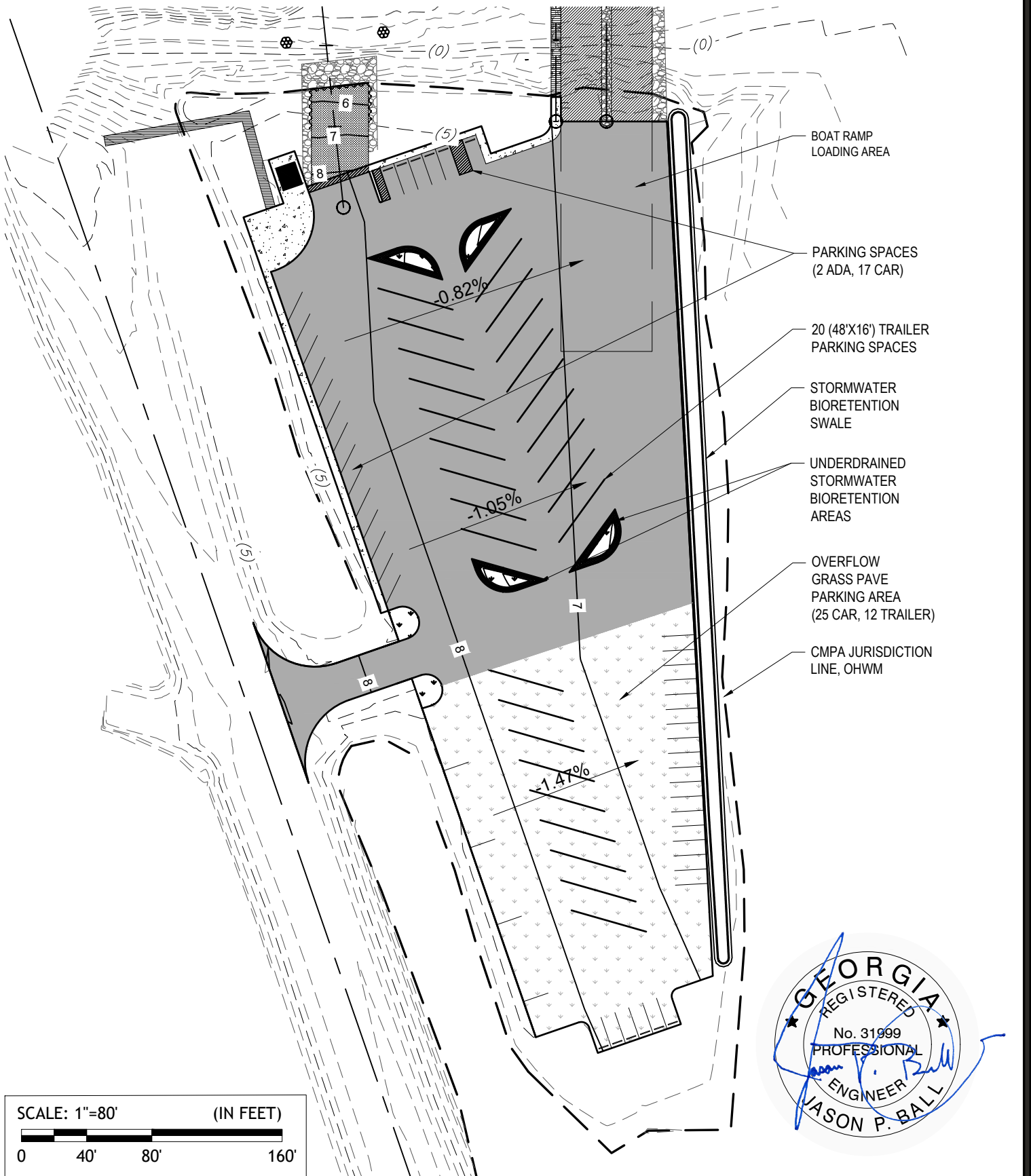


BOAT RAMP IMPROVEMENTS GA DNR CHAMPNEY BOAT RAMP
 PROPOSED ACTIVITY: BOAT RAMP ALTAMAHA RIVER, BRUNSWICK GA

Applicant: GEORGIA DNR
 Date: 01/03/2023
 County: MCINTOSH
 JOB#: 22-1010 DATUM: NAVD88
 SCALE: 1" = 20' SHEET: 8 of 17



Ball Maritime Group, LLC
 4 Cedar View Court | Savannah, Georgia | 31410 | (912) 662-2914
 www.ballmaritime.com Copyright © 2020



BOAT RAMP
LOADING AREA

PARKING SPACES
(2 ADA, 17 CAR)

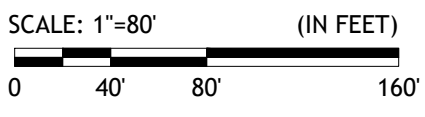
20 (48'X16') TRAILER
PARKING SPACES

STORMWATER
BIORETENTION
SWALE

UNDERDRAINED
STORMWATER
BIORETENTION
AREAS

OVERFLOW
GRASS PAVE
PARKING AREA
(25 CAR, 12 TRAILER)

CMPA JURISDICTION
LINE, OHWM

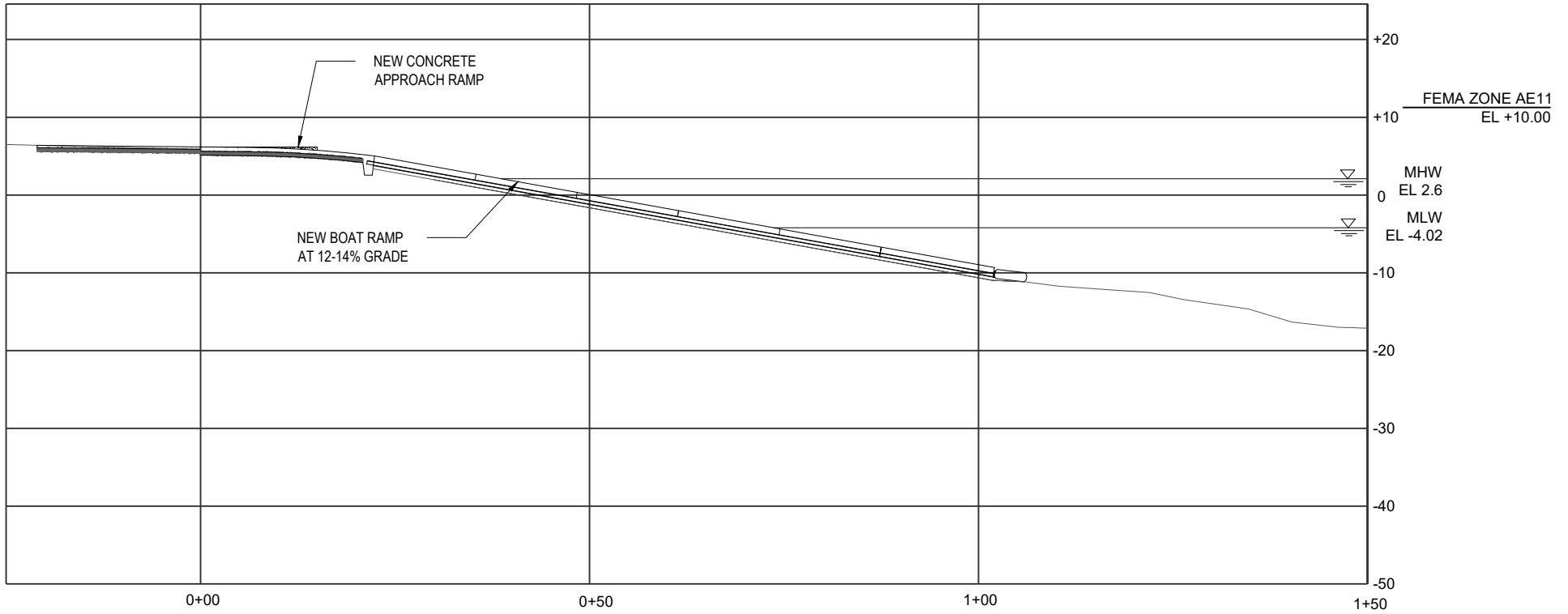


PARKING IMPROVEMENTS **GA DNR CHAMPNEY BOAT RAMP**
PROPOSED ACTIVITY: BOAT RAMP **ALTAMAHA RIVER, BRUNSWICK GA**

Applicant: **GEORGIA DNR**
Date: **01/03/2023**
County: **MCINTOSH**
JOB#: **22-1010** DATUM: **NAVD88**
SCALE: **1" = 80'** SHEET: **9 of 17**



Ball Maritime Group, LLC
4 Cedar View Court | Savannah, Georgia | 31410 | (912) 662-2914
www.ballmaritime.com Copyright © 2020



BOAT RAMP ELEVATION **GA DNR CHAMPNEY BOAT RAMP**
PROPOSED ACTIVITY: BOAT RAMP **ALTAMAHA RIVER, BRUNSWICK GA**

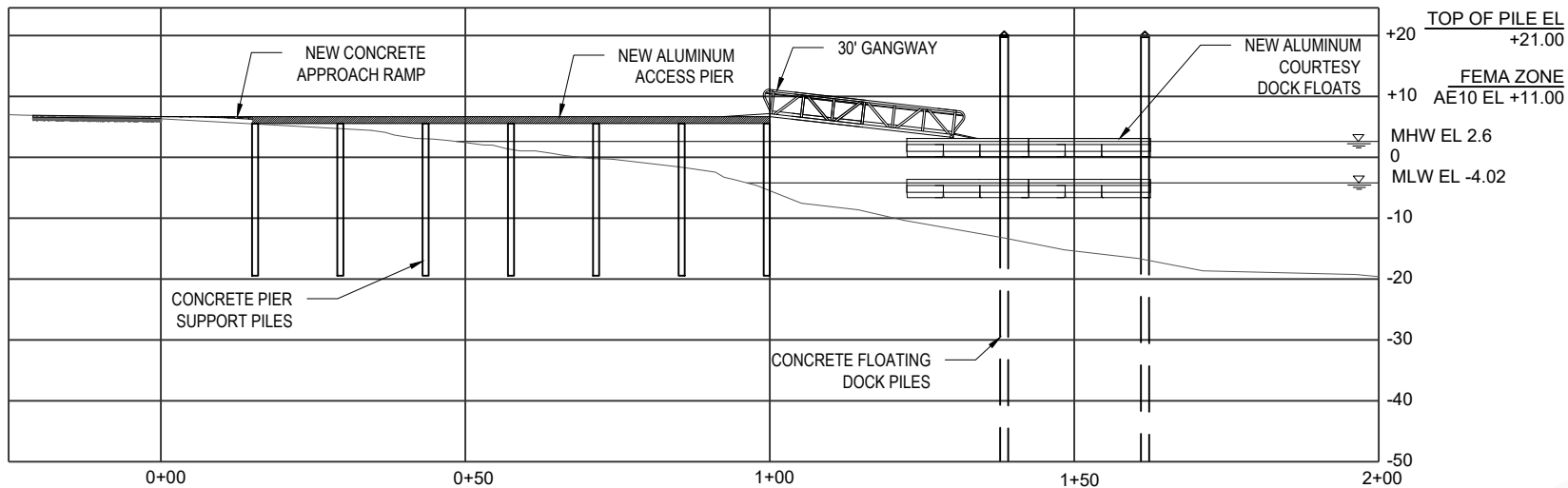
Applicant: **GEORGIA DNR**
Date: **01/03/2023**
County: **MCINTOSH**
JOB#: **22-1010** DATUM: **NAVD88**
SCALE: **1" = 20'** SHEET: **10 of 17**

GENERAL NOTES:

SCALE: **1"=20'** (IN FEET)

0 10' 20' 40'

Ball Maritime Group, LLC
4 Cedar View Court | Savannah, Georgia | 31410 | (912) 662-2914
www.ballmaritime.com Copyright © 2020



DOCK ELEVATION

GA DNR CHAMPNEY BOAT RAMP

PROPOSED ACTIVITY: BOAT RAMP

ALTAMAHA RIVER, BRUNSWICK GA

Applicant: **GEORGIA DNR**

Date: **01/03/2023**

County: **MCINTOSH**

JOB#: **22-1010**

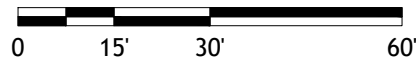
DATUM: **NAVD88**

SCALE: **1" = 30'**

SHEET: **11 of 17**

GENERAL NOTES:

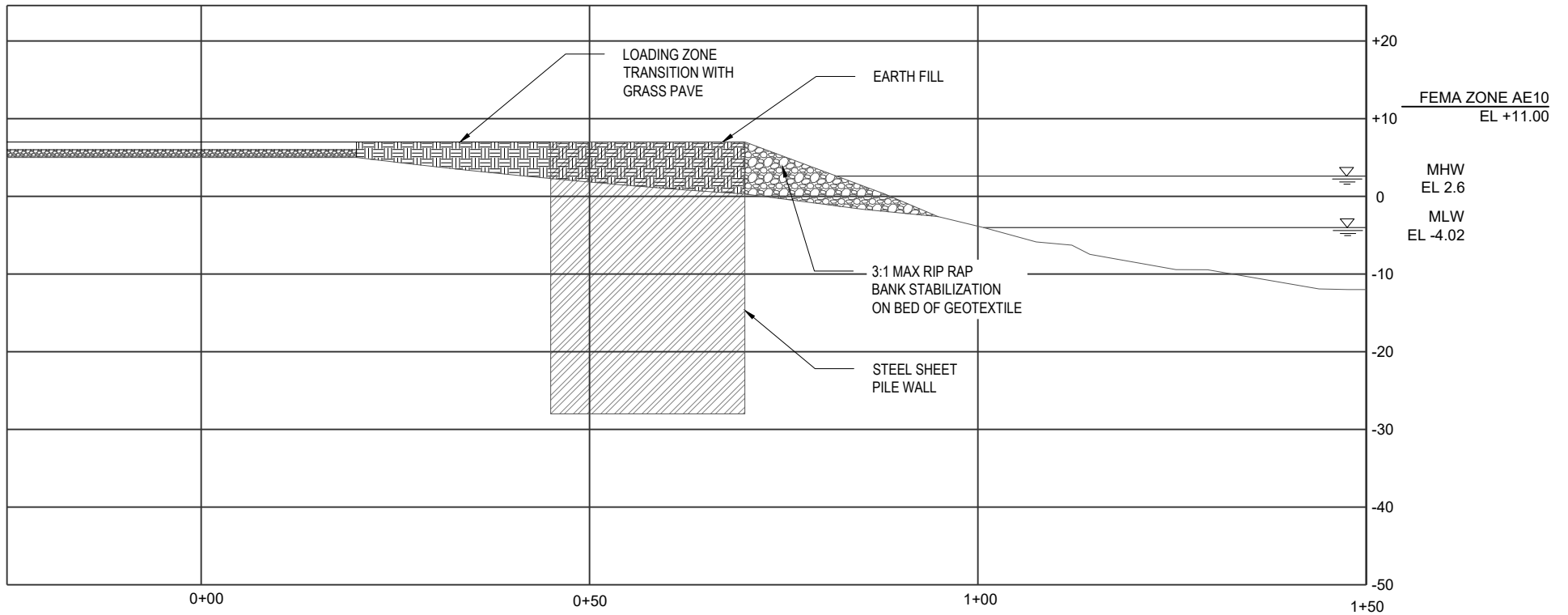
SCALE: 1"=30' (IN FEET)



Ball Maritime Group, LLC

4 Cedar View Court | Savannah, Georgia | 31410 | (912) 662-2914
www.ballmaritime.com

Copyright © 2020



BARGE RAMP ELEVATION **GA DNR CHAMPNEY BOAT RAMP**

PROPOSED ACTIVITY: BOAT RAMP ALTAMAHA RIVER, BRUNSWICK GA

Applicant: **GEORGIA DNR**

Date: **01/03/2023**

County: **MCINTOSH**

JOB#: **22-1010** DATUM: **NAVD88**

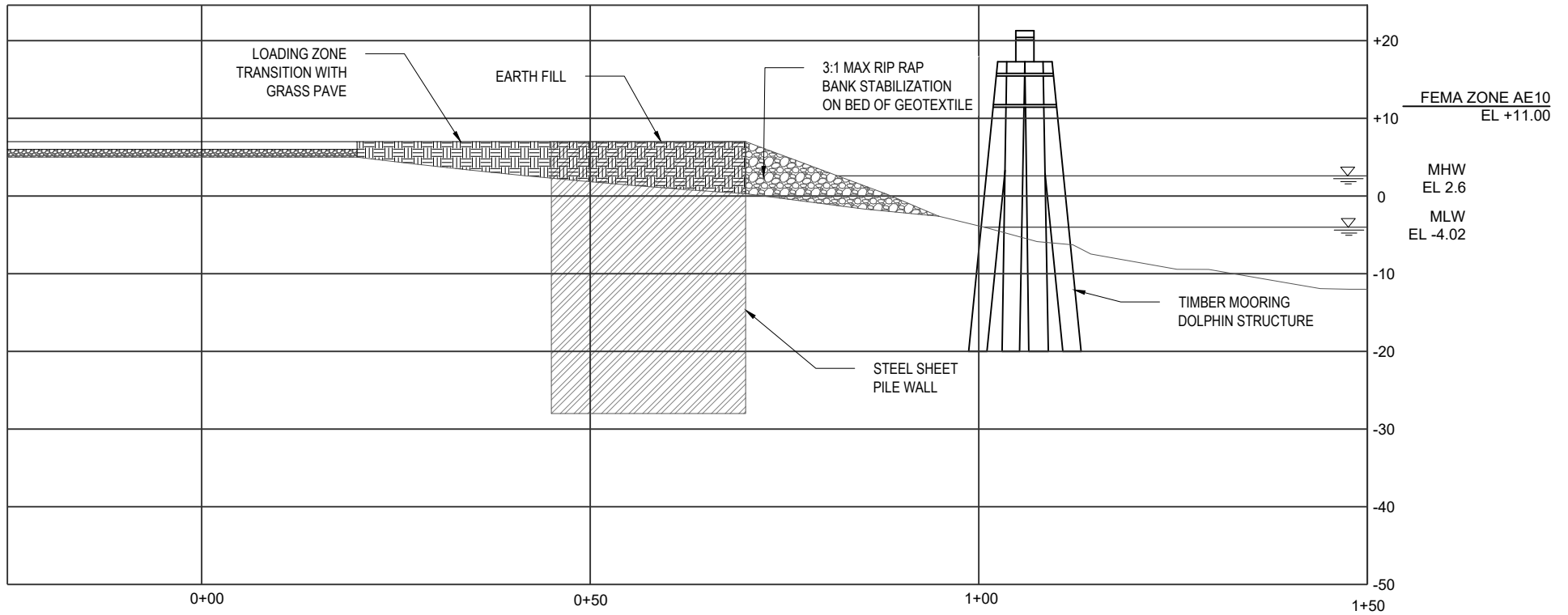
SCALE: **1" = 20'** SHEET: **12 of 17**

GENERAL NOTES:

SCALE: **1"=20'** (IN FEET)



Ball Maritime Group, LLC
 4 Cedar View Court | Savannah, Georgia | 31410 | (912) 662-2914
 www.ballmaritime.com Copyright © 2020



DOLPHIN ELEVATION

GA DNR CHAMPNEY BOAT RAMP

PROPOSED ACTIVITY: BOAT RAMP

ALTAMAHA RIVER, BRUNSWICK GA

Applicant: **GEORGIA DNR**

Date: **01/03/2023**

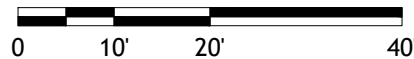
County: **MCINTOSH**

JOB#: **22-1010** DATUM: **NAVD88**

SCALE: **1" = 20'** SHEET: **13 of 17**

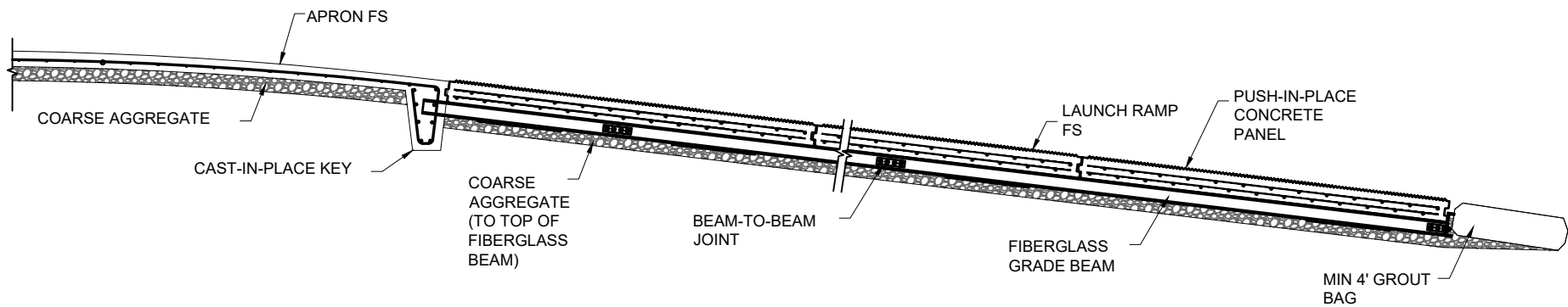
GENERAL NOTES:

SCALE: 1"=20' (IN FEET)



Ball Maritime Group, LLC

4 Cedar View Court | Savannah, Georgia | 31410 | (912) 662-2914
www.ballmaritime.com Copyright © 2020



BOAT RAMP SECTION

GA DNR CHAMPNEY BOAT RAMP

PROPOSED ACTIVITY: BOAT RAMP

ALTAMAHA RIVER, BRUNSWICK GA

Applicant: GEORGIA DNR

Date: 01/03/2023

County: MCINTOSH

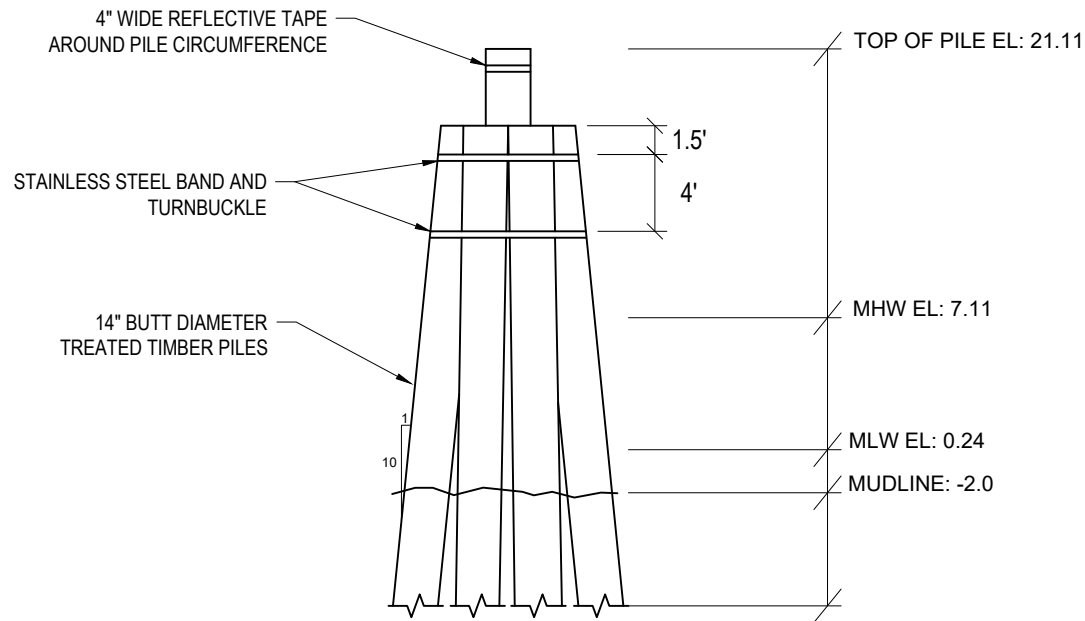
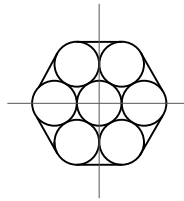
JOB#: 22-1010 DATUM: NAVD88

SCALE: N.T.S. SHEET: 14 of 17

GENERAL NOTES:



Ball Maritime Group, LLC
 4 Cedar View Court | Savannah, Georgia | 31410 | (912) 662-2914
 www.ballmaritime.com Copyright © 2020



DOLPHIN DETAIL

GA DNR CHAMPNEY BOAT RAMP

PROPOSED ACTIVITY: BOAT RAMP

ALTAMAHA RIVER, BRUNSWICK GA

Applicant: **GEORGIA DNR**

Date: **01/03/2023**

County: **MCINTOSH**

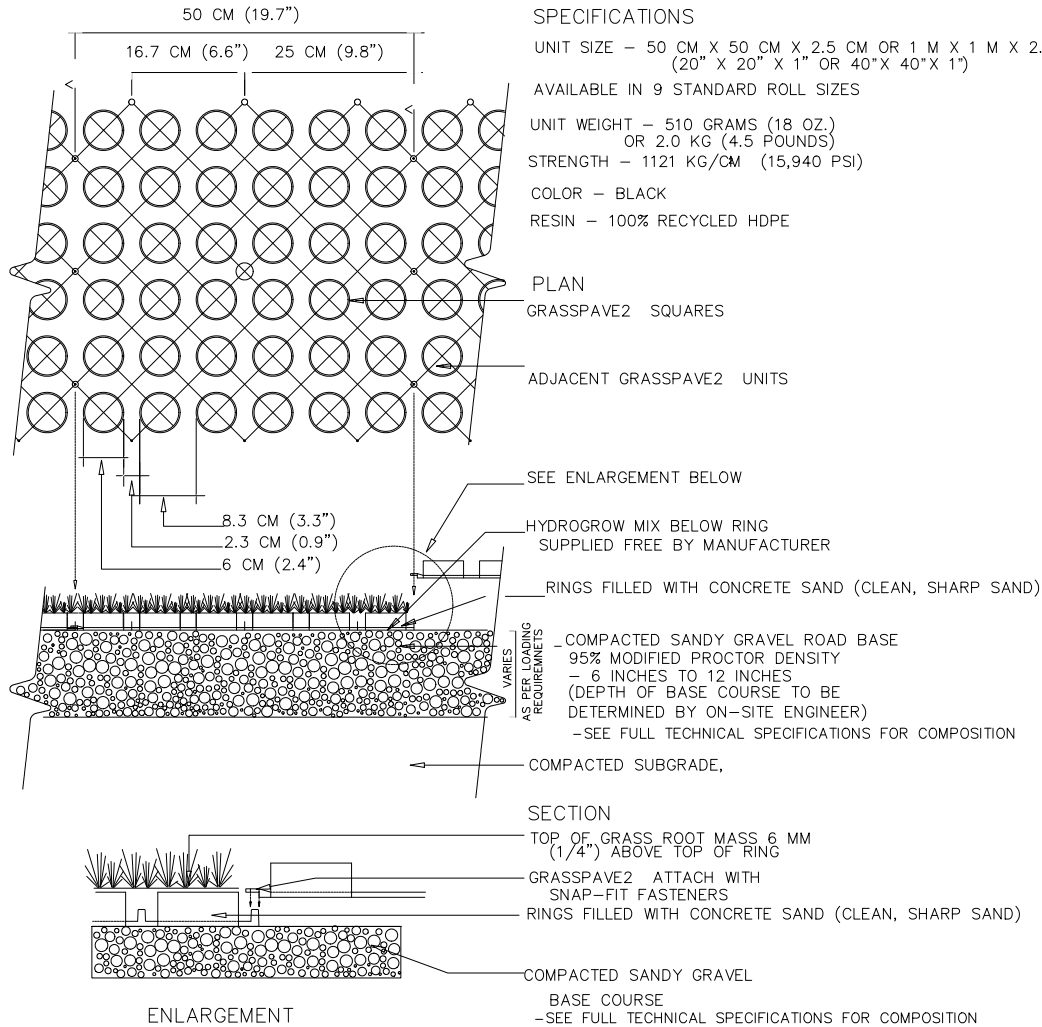
JOB#: **22-1010** DATUM: **NAVD88**

SCALE: **N.T.S.** SHEET: **15 of 17**

GENERAL NOTES:



Ball Maritime Group, LLC
 4 Cedar View Court | Savannah, Georgia | 31410 | (912) 662-2914
 www.ballmaritime.com Copyright © 2020



SPECIFICATIONS
 UNIT SIZE - 50 CM X 50 CM X 2.5 CM OR 1 M X 1 M X 2.5 CM
 (20" X 20" X 1" OR 40" X 40" X 1")
 AVAILABLE IN 9 STANDARD ROLL SIZES
 UNIT WEIGHT - 510 GRAMS (18 OZ.)
 OR 2.0 KG (4.5 POUNDS)
 STRENGTH - 1121 KG/CM (15,940 PSI)
 COLOR - BLACK
 RESIN - 100% RECYCLED HDPE

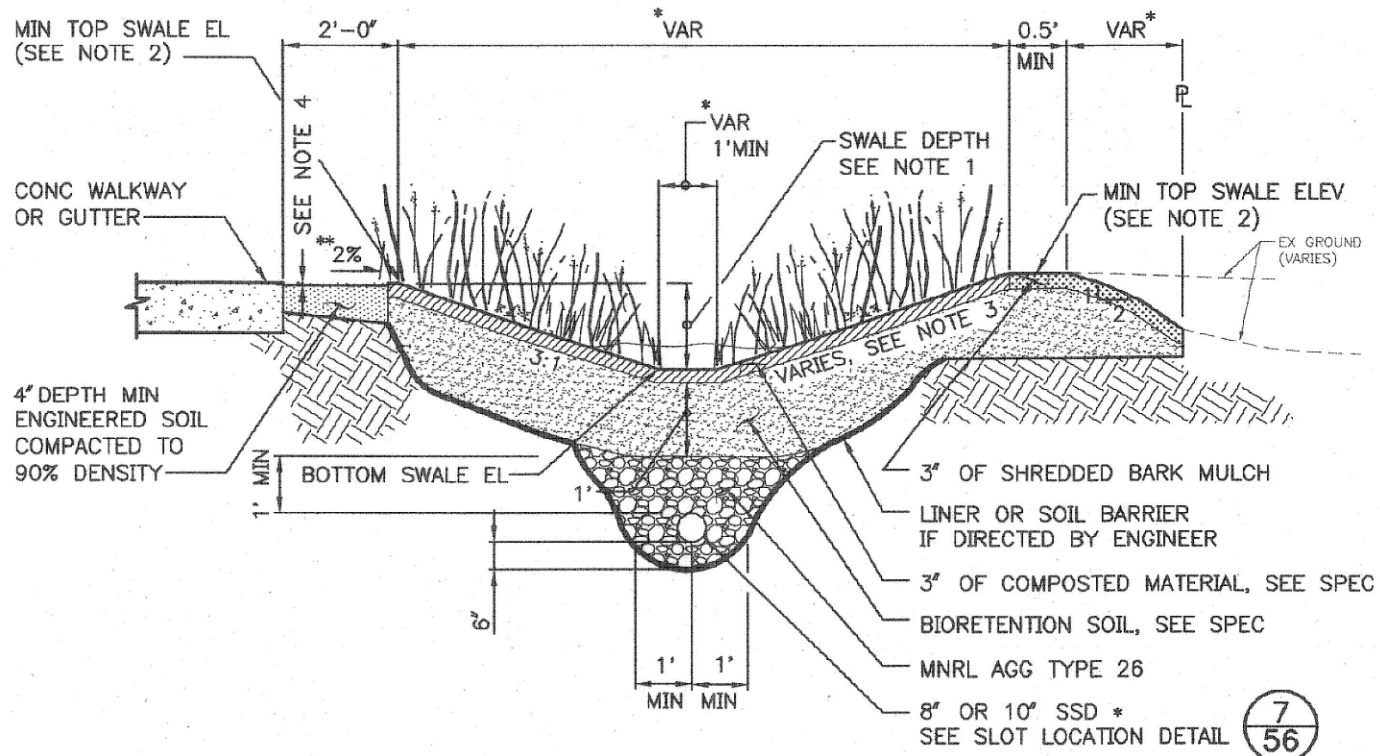
NOTE: GRASS/PLANT TYPES SHALL BE SPECIFIED BY A LANDSCAPE ARCHITECT OR LANDSCAPE DESIGNER.



GRASS PAVE DETAIL **GA DNR CHAMPNEY BOAT RAMP**
 PROPOSED ACTIVITY: BOAT RAMP ALTAMAHA RIVER, BRUNSWICK GA
 Applicant: GEORGIA DNR
 Date: 01/03/2023
 County: MCINTOSH
 JOB#: 22-1010 DATUM: NAVD88
 SCALE: N.T.S. SHEET: 16 of 17

GENERAL NOTES:

Ball Maritime Group, LLC
 4 Cedar View Court | Savannah, Georgia | 31410 | (912) 662-2914
 www.ballmaritime.com Copyright © 2020



BIORETENTION SWALE W/ SSD

SCALE: 1/2" = 1'-0"

2/27



BIORETENTION DETAIL

GA DNR CHAMPNEY BOAT RAMP

PROPOSED ACTIVITY: BOAT RAMP

ALTAMAHA RIVER, BRUNSWICK GA

Applicant: GEORGIA DNR
 Date: 01/03/2023
 County: MCINTOSH
 JOB#: 22-1010
 SCALE: N.T.S.

DATUM: NAVD88
 SHEET: 17 of 17

GENERAL NOTES:



Ball Maritime Group, LLC
 4 Cedar View Court | Savannah, Georgia | 31410 | (912) 662-2914
 www.ballmaritime.com Copyright © 2020