

Figure 1. Section plan for oyster restoration with cultch deployed at or above MLW below the marsh line.

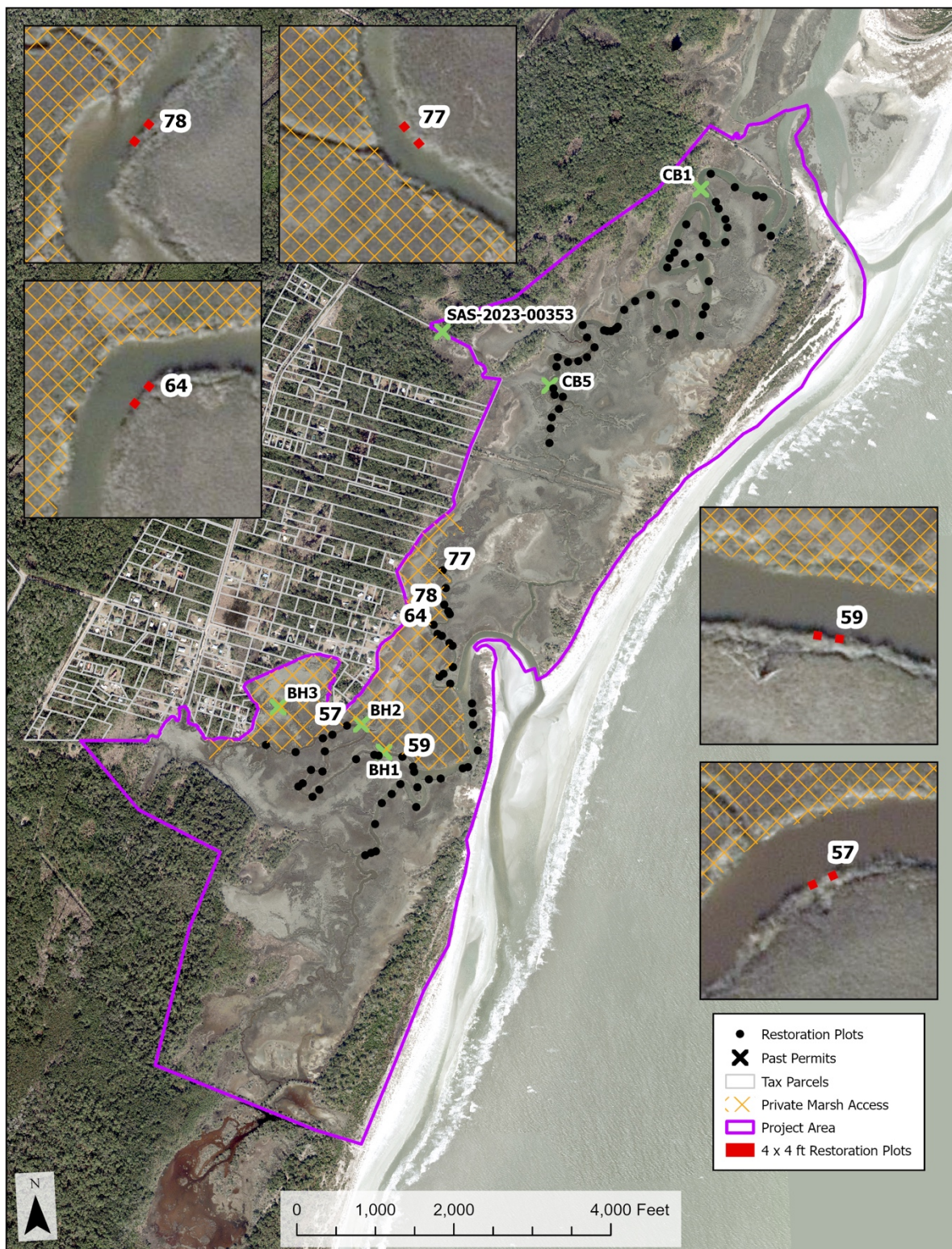


Figure 2. Aerial photography of the project site taken near low tide in 2018. Proposed restoration plots demarked with black dots. Proposed sites are approximate. Exact locations will be determined through community meetings and modeling exercises as described in appendix text.



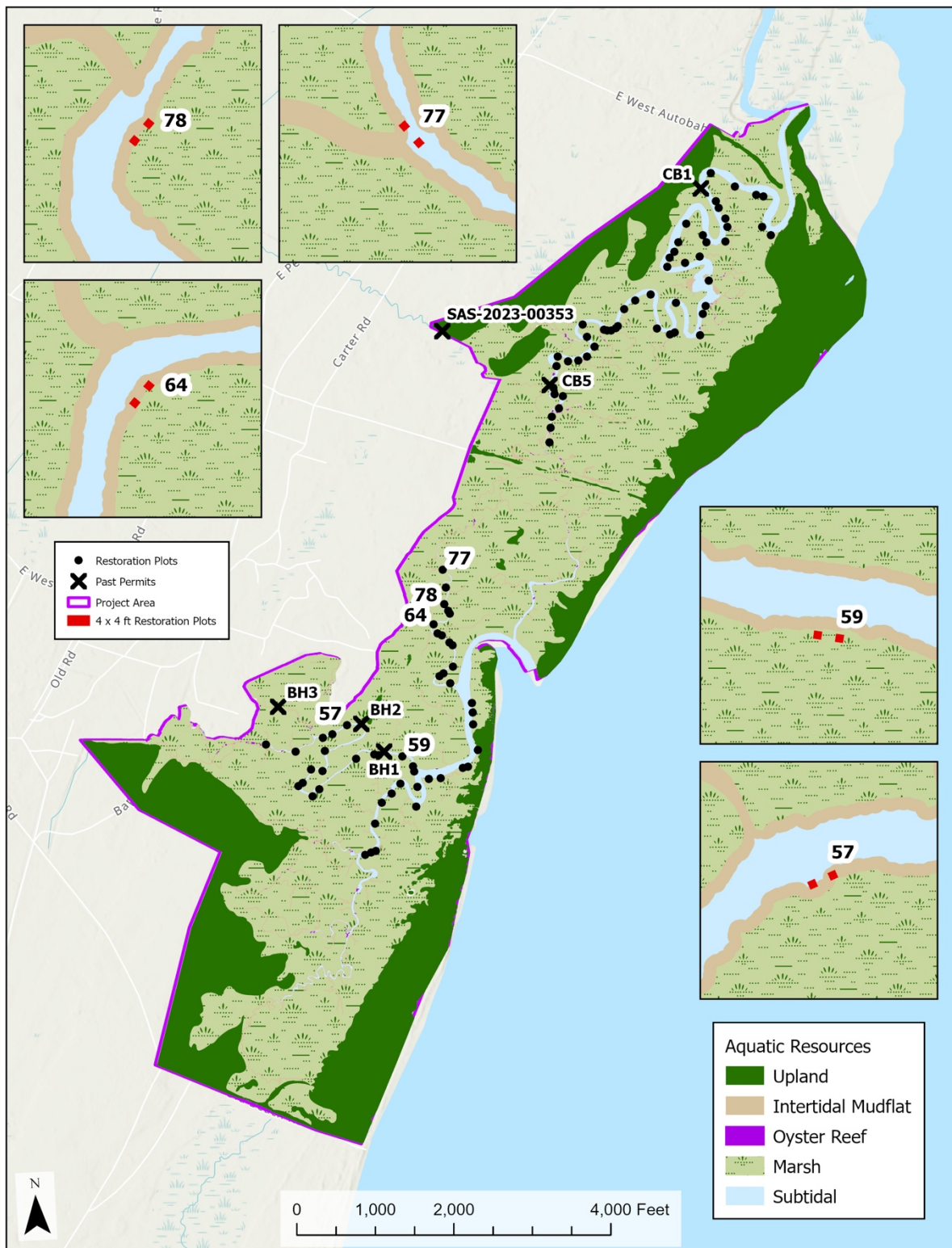


Figure 3. Map of proposed oyster restoration areas and the nearby aquatic resources within 100', delineated from aerial imagery collected at low tide in 2024. Proposed sites are approximate. Exact locations will be determined through community meetings and modeling exercises as described in Appendix I text.

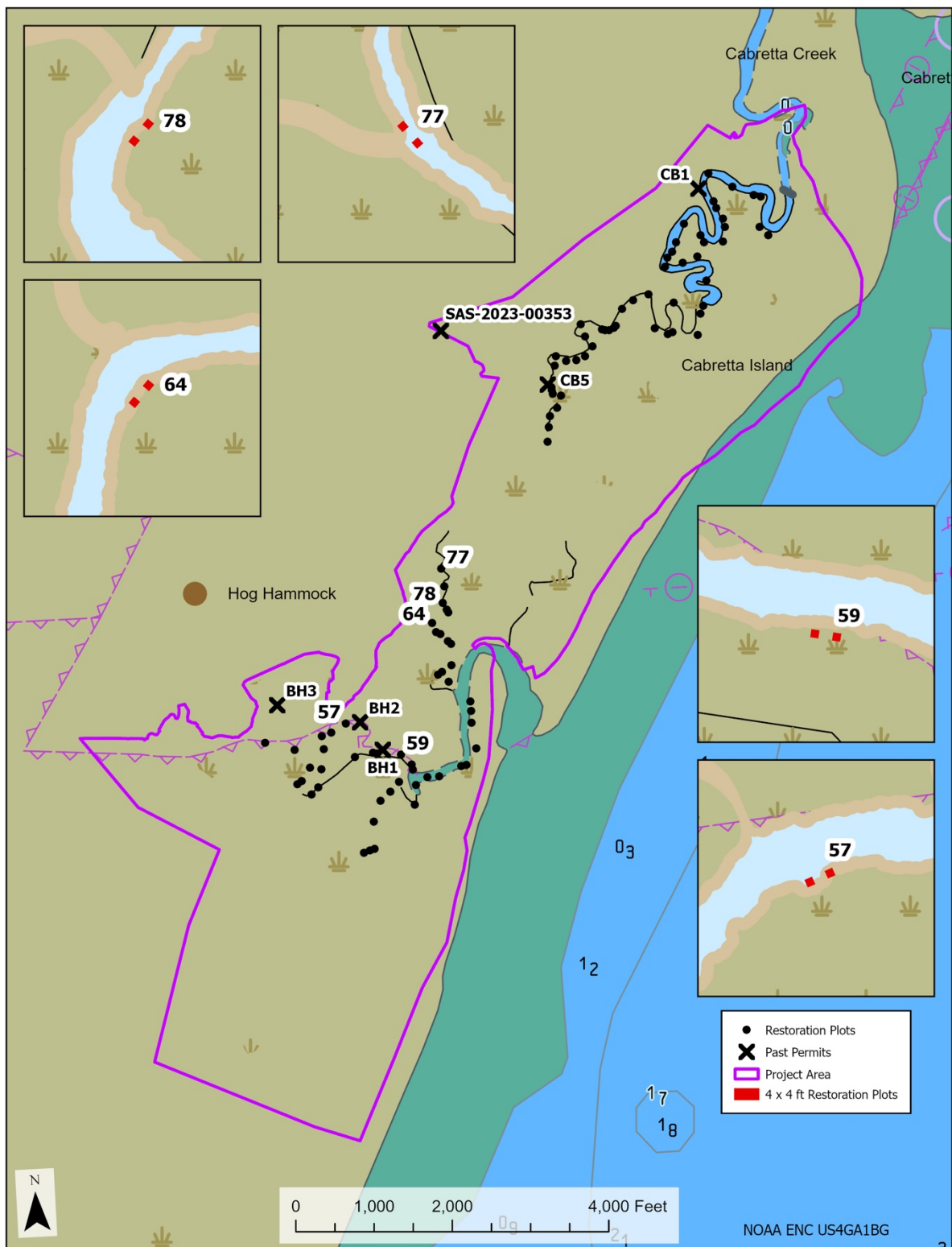


Figure 4. Project area for the Cabretta and Big Hole Creeks Restoration Project. Proposed test plots demarked with red dots. NOAA Navigational Chart # 11509\_1. Proposed sites are approximate. Exact locations will be determined through community meetings and modeling exercises as described in Appendix I text.