

Figure 1 - Aerial Map



Virginia Street Outfall

Proposed Outfall  
Lat: 31.134826  
Long: -81.399020

Existing Outfall  
Lat: 31.134927  
Long: -81.398940

*Atlantic Ocean*

Directions from Brunswick, GA:  
Take F J Torras Casueway onto  
St. Simons Island. Continue onto  
Kings Way. Turn right onto Fairway  
Dr. Turn right onto Georgia St.

Source: Esri, DigitalGlobe, GeoEye, Earthstar Geographics, CNES/Airbus  
DS, USDA, USGS, AeroGRID, IGN, and the GIS User Community



# GEORGIA WATER & ENVIRONMENTAL SERVICES

1510 Newcastle Street, Suite 204, Brunswick, GA 31520  
Phone: (478) 235-0307

Project Location	GWES Project: 065.02.3.18
Glynn County	Prepared by CN on 12-11-2018
Georgia	Technical Review by BM on 12-15-2018
Client/Project	

Glynn County Board of Commissioners

Figure No.  
**1**

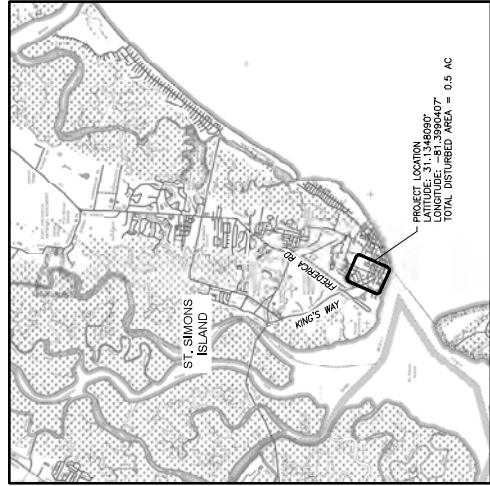
Page 01 of 01

Title  
**Aerial Map**

# VILLAGE DRAINAGE IMPROVEMENTS PHASE I

## FOR GLYNN COUNTY BOARD OF COMMISSIONERS

Glynn County, GA  
24 Hr. Contact: Ben Pierce, PE, Roads and Drainage Division Manager  
Tel.: (912) 554-7744

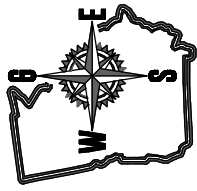


VICINITY MAP  
SCALE: N.T.S.



*Glynn County*  
GEORGIA

<b>DRAWING INDEX</b>	<b>COVER SHEET</b>
C-1	GENERAL CONSTRUCTION NOTES, LEGEND, AND ABBREVIATIONS
C-2	DEMOLITION PLAN - GEORGIA STREET OUTFALL
C-3	REPLACEMENT PLAN - GEORGIA STREET OUTFALL
C-4	STORM DRAINAGE PLAN - GEORGIA STREET OUTFALL
C-5	STORM DRAINAGE PROFILE - "SS"
C-6	STORM DRAINAGE PROFILE - "GS"
C-7	STORM DRAINAGE PROFILE - SANITARY SEWER PROFILES LINE "A" AND LINE "B"
C-8 - C-12	MISCELLANEOUS DETAILS
EC-1	EROSION, SEDIMENTATION, AND POLLUTION CONTROL NOTES, LEGEND, AND SCHEDULE
EC-2	EROSION, SEDIMENTATION, AND POLLUTION CONTROL DETAILS



**GEORGIA WATER & ENVIRONMENTAL SERVICES, LLC**  
BRUNSWICK - MACON - PERRY  
1100 Newstead St., Ste. 204, Brunswick, Georgia 31520  
4875 Riverdale Drive, Ste. 101, Macon, Georgia 31210  
phone: (478) 265-6107  
www.gwells.com

GWES Project Number: 065.02.3.18







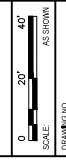
NO.	DATE	REVISIONS

GEORGIA WATER & ENVIRONMENTAL SERVICES, LLC  
 2111 J.W. WALKER BLVD.  
 ATLANTA, GA 30339  
 TEL: 404.524.1000  
 FAX: 404.524.1001  
 WWW: GEORGIAWATER.COM

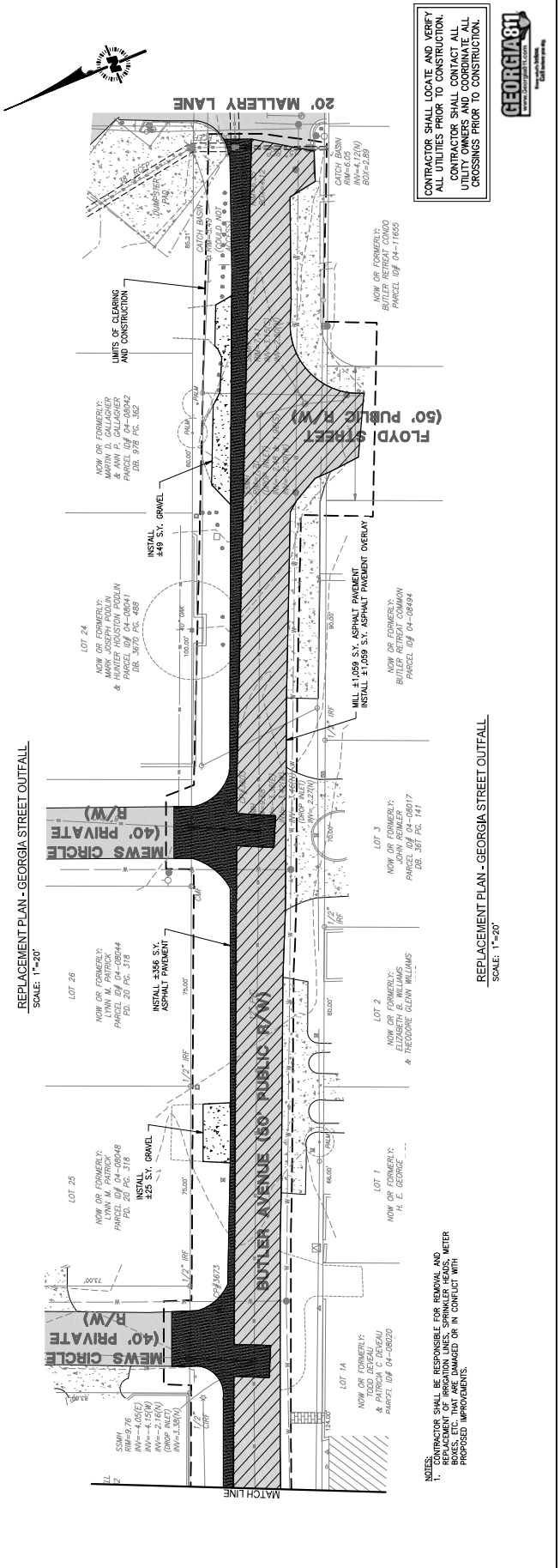
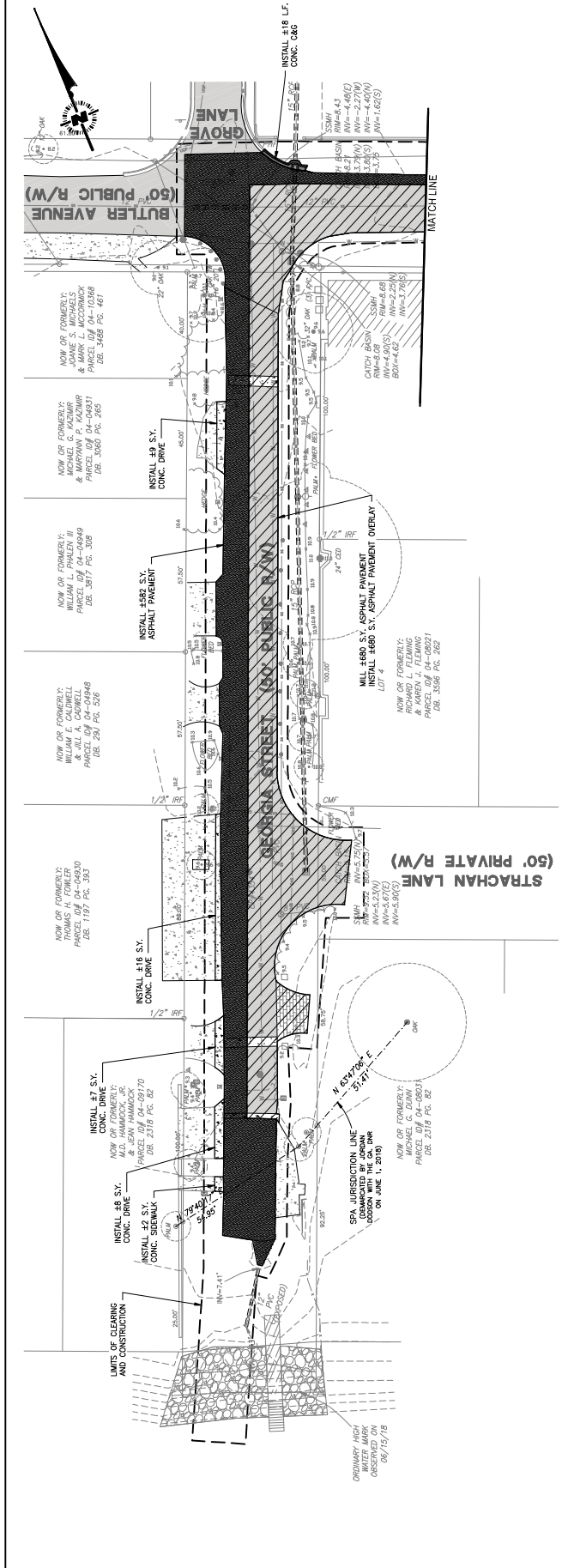


**VILLAGE DRAINAGE IMPROVEMENTS**  
 PHASE II  
 FOR  
**GLYNN COUNTY**  
 BOARD OF COMMISSIONERS  
 GLYNN COUNTY, GEORGIA

PROJECT NO. 6803214  
 DESIGNED BY B.L.M.  
 CHECKED BY B.L.M.  
 DATE: APR 2018  
 REVISIONS: 1  
 REVISION: 1  
 DATE: APR 2018



SHEET 3 OF 14  
**C-3**



CONTRACTOR SHALL LOCATE AND VERIFY ALL UTILITIES PRIOR TO CONSTRUCTION. CONTRACTOR SHALL COORDINATE ALL UTILITY OWNERS AND COORDINATE ALL CROSSINGS PRIOR TO CONSTRUCTION.



REPLACEMENT PLAN - GEORGIA STREET OUTFALL  
 SCALE: 1"=20'

REPLACEMENT PLAN - GEORGIA STREET OUTFALL  
 SCALE: 1"=20'

NOTES:  
 1. CONTRACTOR SHALL BE RESPONSIBLE FOR REMOVAL AND REPLACEMENT OF IRRIGATION LINES, SPRINKLER HEADS, METER AND METER BOXES IN CONFLICT WITH PROPOSED IMPROVEMENTS.

NO.	DATE	REVISIONS / DESCRIPTION
1		
2		
3		
4		
5		
6		
7		
8		
9		
10		

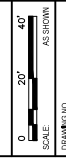
© Copyright 2017 by Georgia Water & Sewerage Services, LLC  
 2017 Atlanta, Georgia  
 All rights reserved.  
 No part of this drawing may be reproduced or transmitted in any form or by any means, electronic or mechanical, including photocopying, recording, or by any information storage and retrieval system, without the prior written permission of Georgia Water & Sewerage Services, LLC. This drawing is the property of Georgia Water & Sewerage Services, LLC and is loaned to the client for the project only. It is not to be used for any other project without the prior written permission of Georgia Water & Sewerage Services, LLC. This drawing is not to be used for any other project without the prior written permission of Georgia Water & Sewerage Services, LLC. This drawing is not to be used for any other project without the prior written permission of Georgia Water & Sewerage Services, LLC.

**GEORGIA WATER & SEWERAGE SERVICES, LLC**

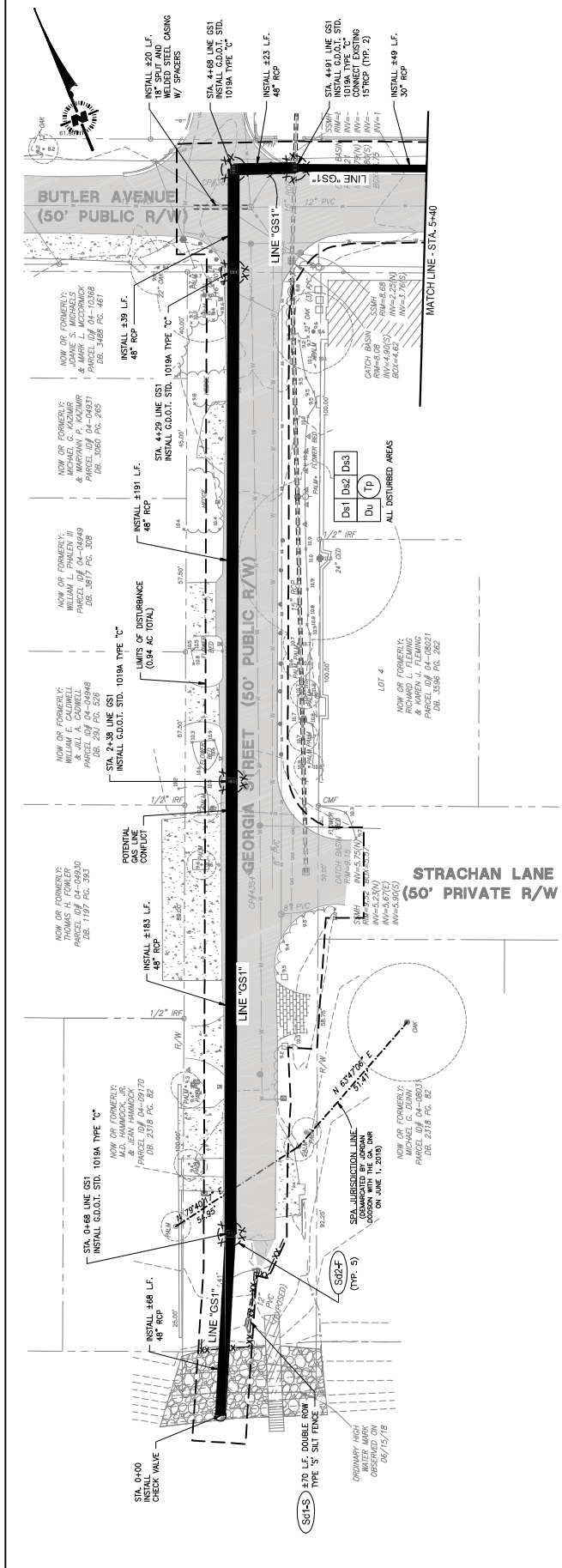
**GEORGIA WATER & SEWERAGE SERVICES, LLC**

**VILLAGE DRAINAGE IMPROVEMENTS**  
 PHASE II  
 FOR  
**GLYNN COUNTY BOARD OF COMMISSIONERS**  
 GLYNN COUNTY, GEORGIA

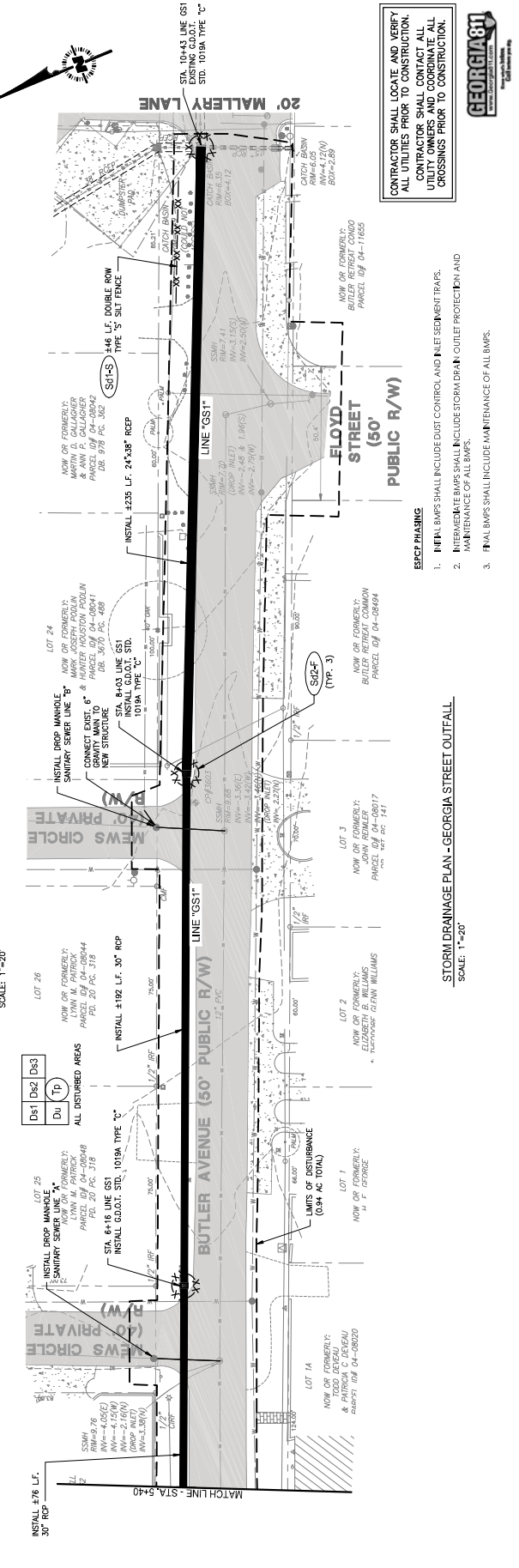
PROJECT NO. 6803214  
 DESIGNED BY B.L.N.  
 CHECKED BY B.M.  
 DATE ISSUED: APR 2019  
 STORM DRAINAGE PLAN - GEORGIA STREET OUTFALL



**C-4**  
 SHEET 4 OF 14



**STORM DRAINAGE PLAN - GEORGIA STREET OUTFALL**  
 SCALE: 1"=20'



**ERCP PHASING**

- INITIAL BMS SHALL INCLUDE DUST CONTROL AND INLET SEDIMENT TRAPS.
- INTERMEDIATE BMS SHALL INCLUDE STORM DRAIN OUTLET PROTECTION AND MAINTENANCE OF ALL BMS.
- FINAL BMS SHALL INCLUDE MAINTENANCE OF ALL BMS.

**STORM DRAINAGE PLAN - GEORGIA STREET OUTFALL**  
 SCALE: 1"=20'

**CONTRACTOR SHALL LOCATE AND VERIFY ALL UTILITIES PRIOR TO CONSTRUCTION. ALL UTILITY OWNERS AND CROSSING SHALL CROSSINGS PRIOR TO CONSTRUCTION.**



10/16/2019 10:52:13 AM C:\Users\bln\OneDrive\Documents\6803214\DWG\6803214-02.dwg









NO.	DATE	REVISIONS
1		DESIGN

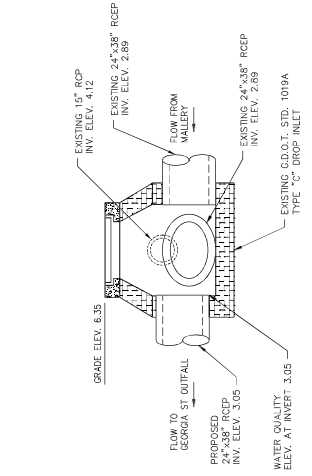
© Copyright 2017, Stormwater Solutions, LLC  
 10000 Highway 100, Suite 100, Atlanta, GA 30328  
 Stormwater Solutions, LLC is a registered professional engineering firm in the State of Georgia. The design of this project is the property of Stormwater Solutions, LLC. No part of this document may be reproduced or transmitted in any form or by any means, electronic, mechanical, photocopying, recording, or by any information storage and retrieval system, without the prior written permission of Stormwater Solutions, LLC. All rights reserved.



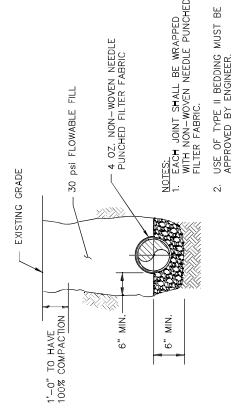
VILLAGE DRAINAGE IMPROVEMENTS  
 PHASE II  
 FOR  
 GLYNN COUNTY  
 BOARD OF COMMISSIONERS  
 GLYNN COUNTY, GEORGIA

PROJECT NO.	080321A
DESIGNED BY	S.J.N.
CHECKED BY	B.M.
DATE	APR 2019

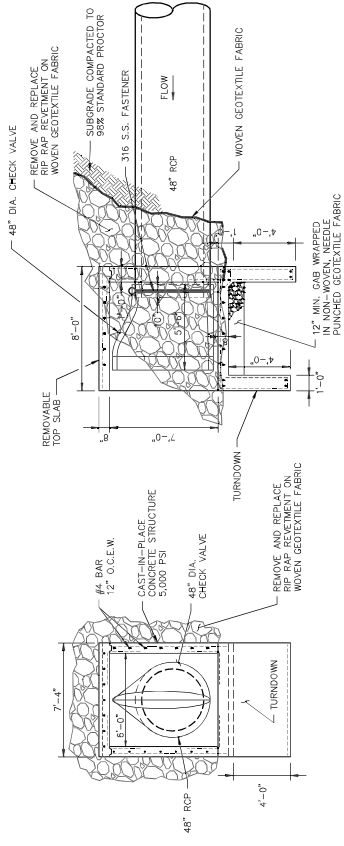
SCALE: AS SHOWN  
 DRAWING NO. C-8  
 SHEET: 8 OF 14



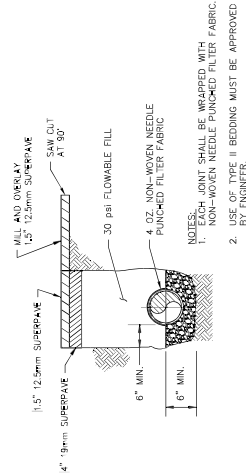
2 DETAIL - WATER QUALITY STRUCTURE  
 SCALE: N.T.S.



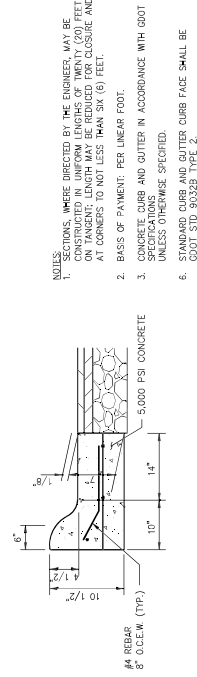
4 DETAIL - STORM PIPE BEDDING  
 SCALE: N.T.S.



1 DETAIL - GEORGIA STREET OUTFALL STRUCTURE  
 SCALE: N.T.S.



3 DETAIL - ASPHALT PAVEMENT REPLACEMENT AND STORM PIPE BEDDING  
 SCALE: N.T.S.



5 DETAIL - HEAVY DUTY ROLL-OVER CURB AND GUTTER  
 SCALE: N.T.S.





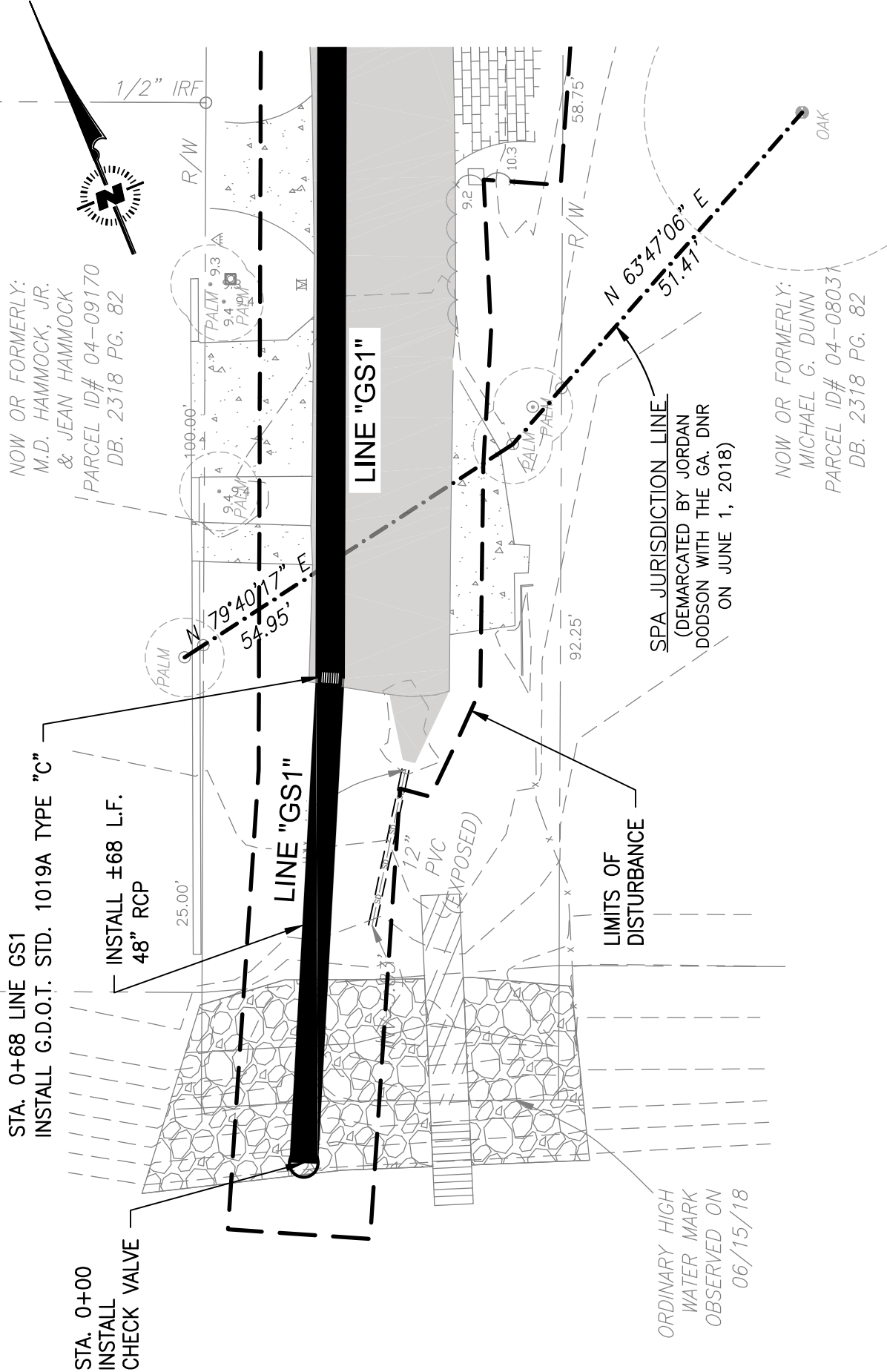








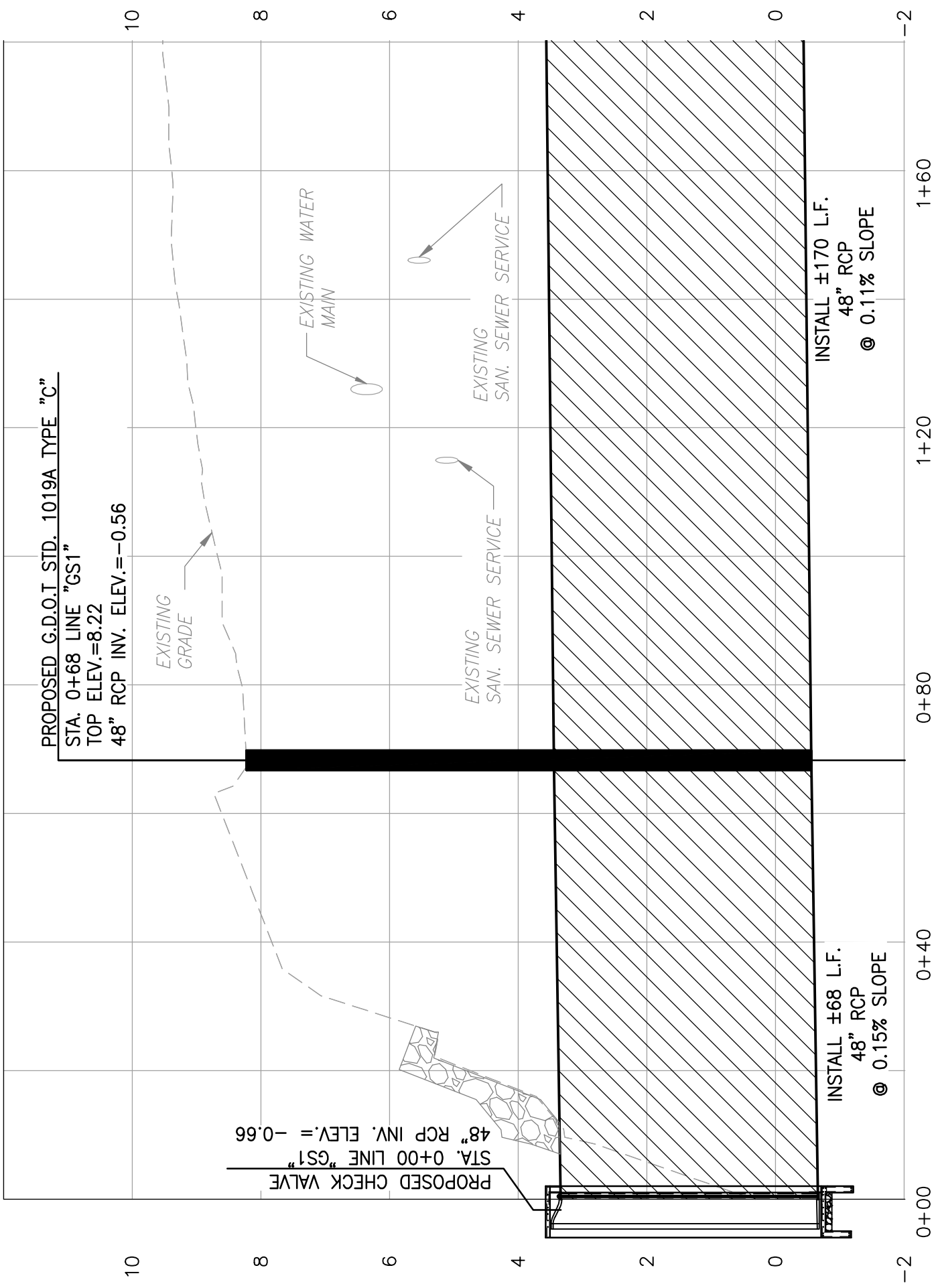




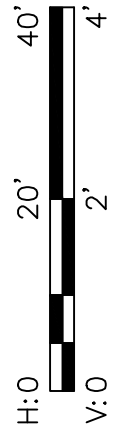
**STORM DRAINAGE PLAN - GEORGIA STREET OUTFALL**

SCALE: 1"=20'





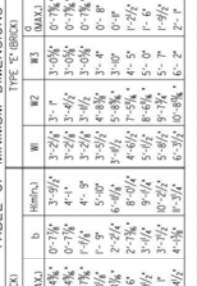
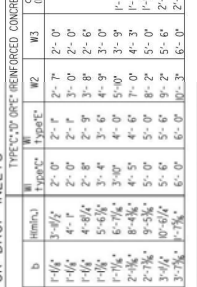
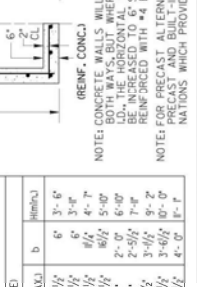
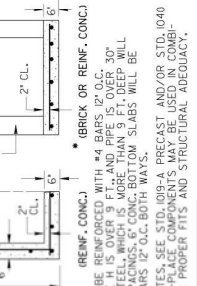
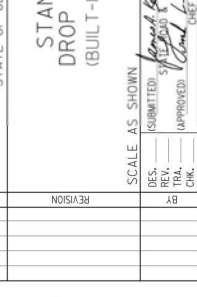
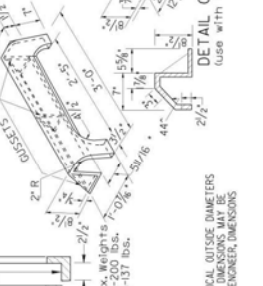
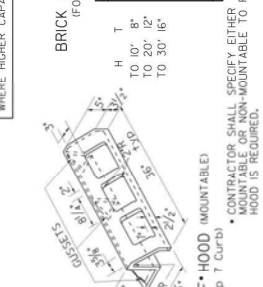
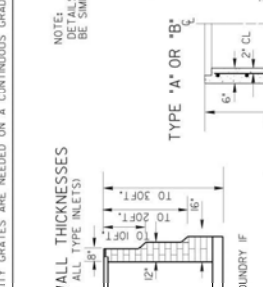
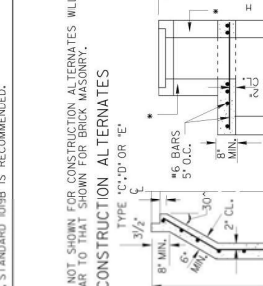
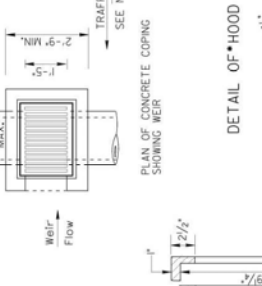
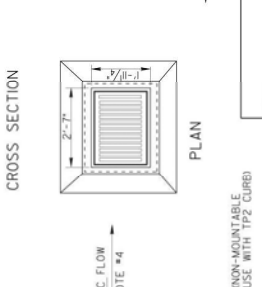
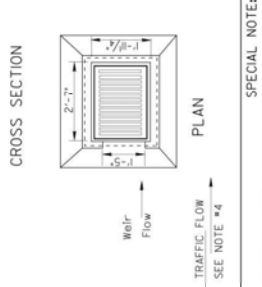
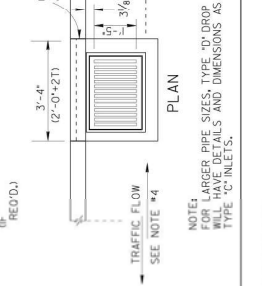
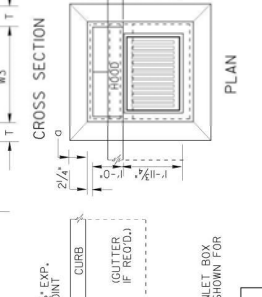
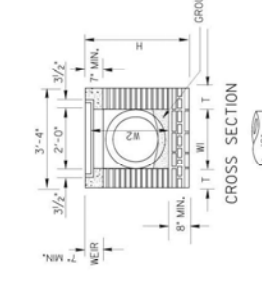
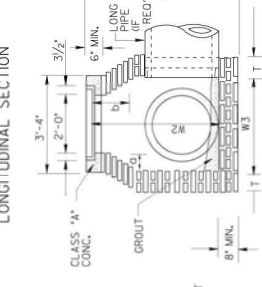
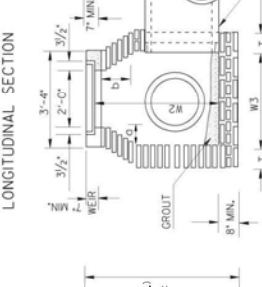
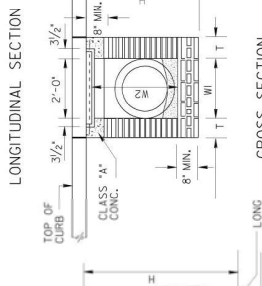
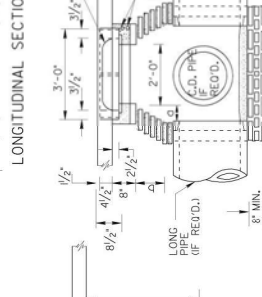
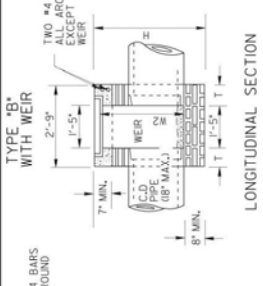
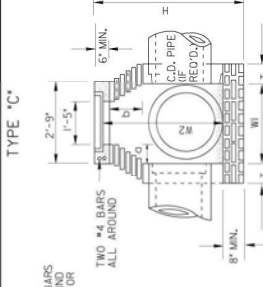
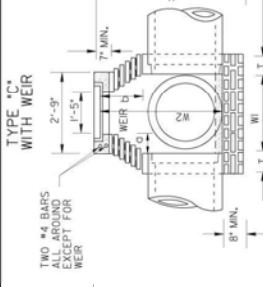
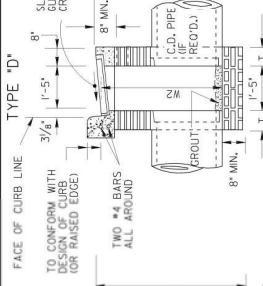
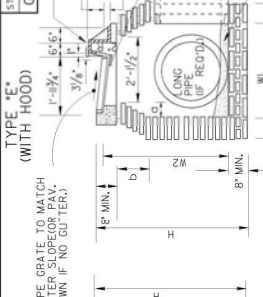
**STORM DRAINAGE PROFILE - GEORGIA STREET OUTFALL "GS1"**





STATE	PROJECT NUMBER	SHEET NO.	TOTAL SHEETS
GA.			

NON-MOUNTABLE HOOD IS SHOWN IN THIS DETAIL. DETAILS BELOW AT LEFT.



**TABLE OF MINIMUM DIMENSIONS FOR DROP INLETS**

D	TYPE 'C' (OPT) (BRCK)		TYPE 'D' (OPT) (BRCK)		TYPE 'E' (BRCK)		TYPE 'C', 'D' OR 'E' (REINFORCED CONCRETE)	
	W1	W2	W1	W2	W1	W2	W1	W2
8"	2'-0"	2'-0"	2'-0"	2'-0"	2'-0"	2'-0"	2'-0"	2'-0"
24"	2'-0"	2'-0"	2'-0"	2'-0"	2'-0"	2'-0"	2'-0"	2'-0"
36"	2'-0"	2'-0"	2'-0"	2'-0"	2'-0"	2'-0"	2'-0"	2'-0"
48"	2'-0"	2'-0"	2'-0"	2'-0"	2'-0"	2'-0"	2'-0"	2'-0"
60"	2'-0"	2'-0"	2'-0"	2'-0"	2'-0"	2'-0"	2'-0"	2'-0"

MINIMUM DIMENSIONS GIVEN IN TABLE BELOW ARE BASED UPON TYPICAL OUTSIDE DIMENSIONS. DIMENSIONS MAY VARY SLIGHTLY DUE TO MANUFACTURING TOLERANCES. DIMENSIONS SHOWN IN PLANS OR AS DIRECTED BY THE ENGINEER. DIMENSIONS GIVEN ARE MAXIMUM EXCEPT FOR 'D' WHICH IS MAXIMUM.

DEPARTMENT OF TRANSPORTATION  
STATE OF GEORGIA

STANDARD  
DROP INLETS  
(BUILT T-IN-PLACE)

SCALE: AS SHOWN

REV. & REDR. AUG., 1999

DESIGNED BY: *[Signature]*  
CHECKED BY: *[Signature]*  
APPROVED BY: *[Signature]*

NO. 1019A

**GENERAL NOTES:**

1. SPECIFICATIONS GEORGIA STANDARD AND CURRENT EDITION AND SUPPLEMENTS THERETO.
2. 1/2" REINFORCING JOINT WILL BE REQUIRED WHERE BRICK, BLOCK OR CONCRETE UTILITY OR CONCRETE GUTTER MEETS DROP INLETS.
3. ALIGNMENT, NUMBER AND SIZES OF PIPES SHOWN ARE ONLY TYPICAL. SEE PLANS FOR ACTUAL PIPE CALIBER REQUIREMENTS.
4. ALL TYPE DROP INLETS WILL BE CONSTRUCTED AS SHOWN, SO THAT THE CONSTRUCTION SHALL BE IDENTICAL TO THAT SHOWN IN THIS SHEET ON LIMITED ACCESS PROJECTS, OR WHERE BICYCLES ARE PROHIBITED.
5. BRICK MASONRY WITH CLASS 'A' CONC. TOP PORTION IS SHOWN AS STANDARD CONSTRUCTION WITH ALTERNATES PERMITTED AS SHOWN BOTTOM SLAB MAY BE 8" MIN. NON-REINFORCED CONCRETE, 8" BRICK OR 6" MIN. REINFORCED CONCRETE. SEE APPLICABLE STANDARDS FOR ALTERNATE PRECAST CONSTRUCTION.

**SPECIAL NOTE:**  
STANDARD 1019A INLETS ARE FOR USE AT LOW POINTS, & WHERE HYDRAULIC LOW CAPACITY GRATES ARE SUFFICIENT. WHERE HIGHER CAPACITY GRATES ARE NEEDED ON A CONTINUOUS GRAD, STANDARD 1019B IS RECOMMENDED.

**CONSTRUCTION ALTERNATES:**  
DETAILS NOT SHOWN FOR CONSTRUCTION ALTERNATES WILL BE SIMILAR TO THAT SHOWN FOR BRICK MASONRY.

**BRICK WALL THICKNESSES:**  
(FOR ALL TYPE INLETS)

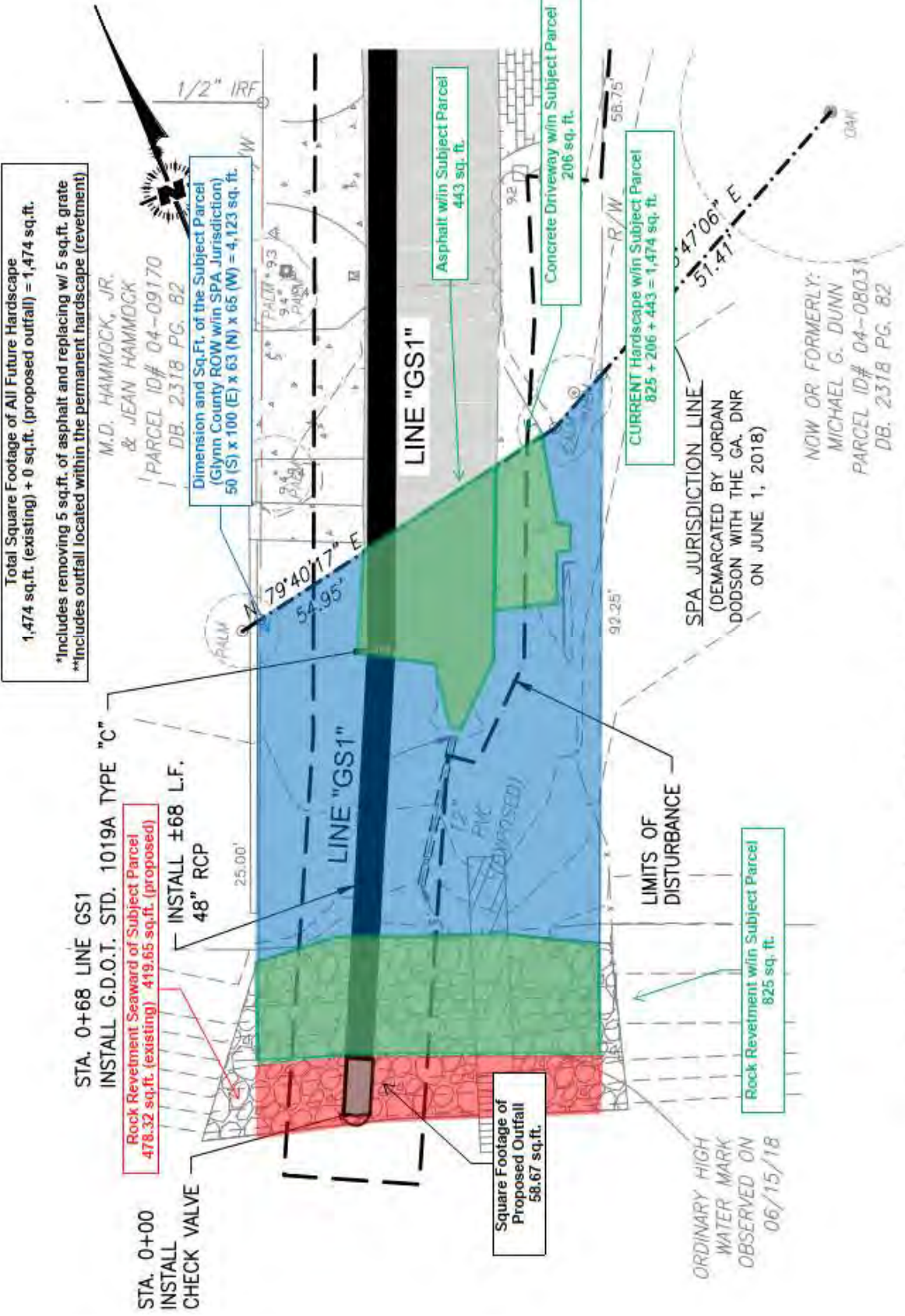
**DETAIL OF HOOD (MOUNTABLE):**  
(USE WITH Tp T CURB)

**DETAIL OF HOOD (NON-MOUNTABLE):**  
(USE WITH Tp T CURB)

**CONTRACTOR SHALL SPECIFY EITHER MOUNTABLE OR NON-MOUNTABLE HOOD IS REQUIRED.**

**NOTE:**  
MINIMUM DIMENSIONS GIVEN IN TABLE BELOW ARE BASED UPON TYPICAL OUTSIDE DIMENSIONS. DIMENSIONS MAY VARY SLIGHTLY DUE TO MANUFACTURING TOLERANCES. DIMENSIONS SHOWN IN PLANS OR AS DIRECTED BY THE ENGINEER. DIMENSIONS GIVEN ARE MAXIMUM EXCEPT FOR 'D' WHICH IS MAXIMUM.

Total Square Footage of All Future Hardscape  
 1,474 sq.ft. (existing) + 0 sq.ft. (proposed outfall) = 1,474 sq.ft.  
 \*Includes removing 5 sq.ft. of asphalt and replacing w/ 5 sq.ft. grate  
 \*\*Includes outfall located within the permanent hardscape (retreatment)



STA. 0+68 LINE GS1  
 INSTALL G.D.O.T. STD. 1019A TYPE "C"

Rock Revetment Seaward of Subject Parcel  
 478.32 sq.ft. (existing) - 419.65 sq.ft. (proposed)

INSTALL ±68 L.F.  
 48" RCP

STA. 0+00  
 INSTALL  
 CHECK VALVE

Square Footage of  
 Proposed Outfall  
 58.67 sq.ft.

LINE "GS1"

Asphalt w/in Subject Parcel  
 443 sq. ft.

Concrete Driveway w/in Subject Parcel  
 206 sq. ft.

CURRENT Hardscape w/in Subject Parcel  
 825 + 206 + 443 = 1,474 sq. ft.

Rock Revetment w/in Subject Parcel  
 825 sq. ft.

ORDINARY HIGH  
 WATER MARK  
 OBSERVED ON  
 06/15/18

LIMITS OF  
 DISTURBANCE

SPA JURISDICTION LINE  
 (DEMARCATED BY JORDAN  
 DODSON WITH THE GA. DNR  
 ON JUNE 1, 2018)

NOW OR FORMERLY:  
 MICHAEL G. DUNN  
 PARCEL ID# 04-08031  
 DB. 2318 PG. 82

**STORM DRAINAGE PLAN - GEORGIA STREET OUTFALL**

SCALE: 1"=20'