



Photo 1: Existing outfall at south end of Georgia St, St. Simons facing northeast.



Photo 2: Existing outfall at south end of Georgia St, St. Simons facing southwest. Jekyll Island is across the waterway (St. Simons Sound).

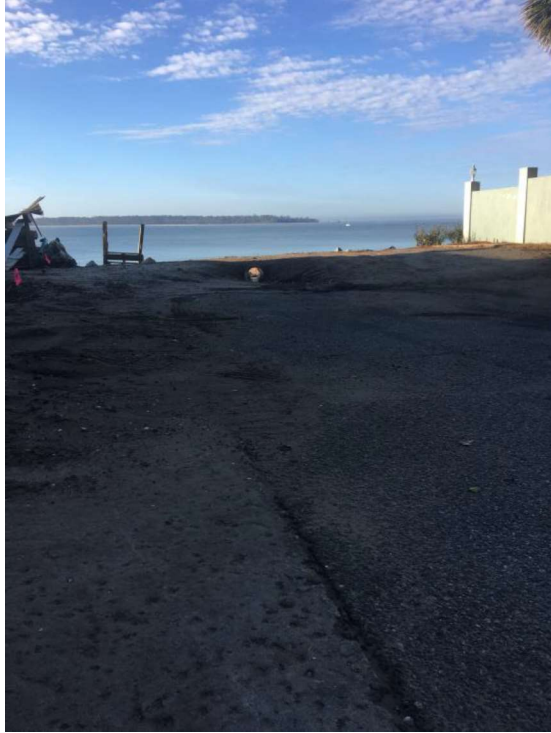


Photo 3: Existing outfall at south end of Georgia St, St. Simons facing southwest.



Photo 4: Existing outfall at south end of Georgia St, St. Simons facing northeast.



Photo 5: Existing outfall at south end of Georgia St, St. Simons facing northeast.

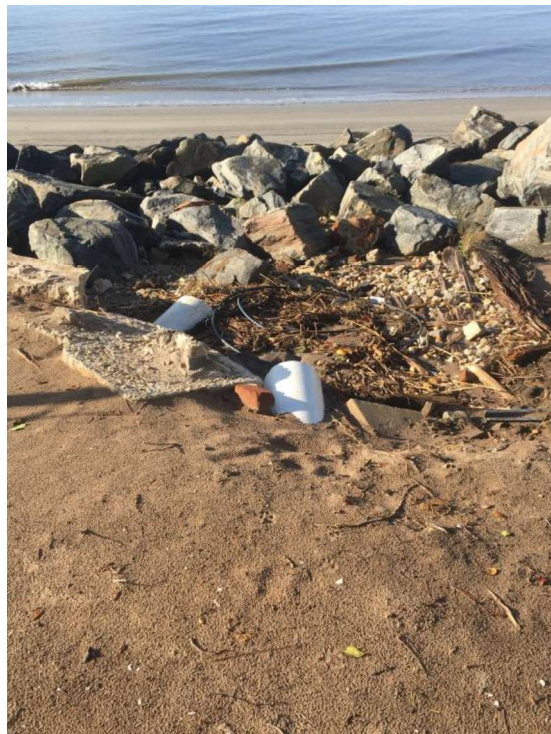


Photo 6: Existing outfall at south end of Georgia St, St. Simons facing south.





Photo 7: Existing outfall at south end of Georgia St, St. Simons facing northeast.