



GA DNR

JUL 30 2018

Marsh & Shore Mgt. Program

Sources: Esri, HERE, Garmin, USGS, Intermap, INCREMENT P, NRCan, Esri Japan, METI, Esri China (Hong Kong), Esri Korea, Esri (Thailand), NGCC, © OpenStreetMap contributors, and the GIS User Community, Source: Esri, DigitalGlobe, GeoEye, Earthstar Geographics, CNES/Airbus DS, USDA, USGS, AeroGRID, IGN, and the GIS User Community

RLC Project No.:	17-124.1
Figure No.:	N/A
Prepared By:	AB
Sketch Date:	7/28/2018
Map Scale :	1 inch = 2,000 feet

Oceanview Beach Park

Glynn County, Georgia

Location Map

Prepared For: Jekyll Island Authority

RLC

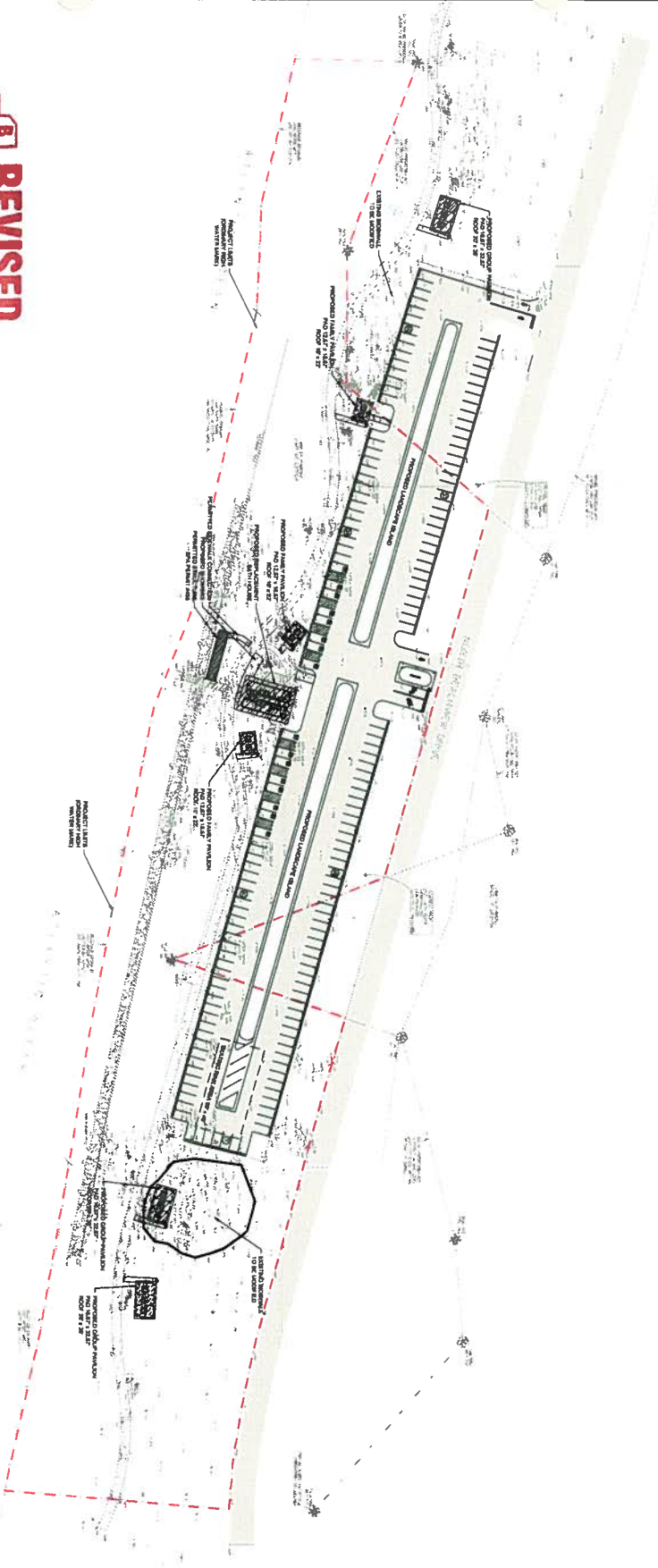
RESOURCE+LAND
CONSULTANTS

41 Parkville Commerce Way, Ste. 203
Stow, MA 01770
978-952-2270 www.rlc.com

REVISED

GA DNR / HMP

3 1 2018



PROJECT PERMITS - NUMBER OF SHEETS

SPACED PERMITS TO BE SUBMITTED TO THE STATE OF GEORGIA FOR REVIEW AND APPROVAL BY THE DEPARTMENT OF NATURAL RESOURCES (DNR) AND THE DEPARTMENT OF REVENUE (DOR). THE PERMITS WILL BE ISSUED BY THE DNR AND THE DOR. THE PERMITS WILL BE VALID FOR 12 MONTHS FROM THE DATE OF ISSUANCE. THE PERMITS WILL BE VALID FOR 12 MONTHS FROM THE DATE OF ISSUANCE. THE PERMITS WILL BE VALID FOR 12 MONTHS FROM THE DATE OF ISSUANCE.

LEGEND

- PROJECT LAYOUT
- PROPOSED BUILDING
- PROPOSED PARKING
- EXISTING CONCRETE
- EXISTING ASPHALT PAVEMENT

SCALE

1" = 50'

0 50 100'

North Arrow

811

King and Latham,
Call before you dig.

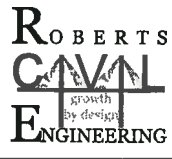
DATE: 2018-07-31
 PROJECT NUMBER: 18060
 DRAWN BY: LWF
 CHECKED BY: JDR
 SCALE: 1"=50'

SPA PERMIT EXHIBIT

OCEANVIEW BEACH PARK

JEKYLL ISLAND, GA

PREPARED FOR:
JEKYLL ISLAND AUTHORITY



REVISIONS

ROBERTS CIVIL ENGINEERING, PC
 301 SEA ISLAND ROAD, SUITE 10
 ST. SIMONS, GA 31522
 912-638-9661 OFFICE
 912-289-0339 FAX

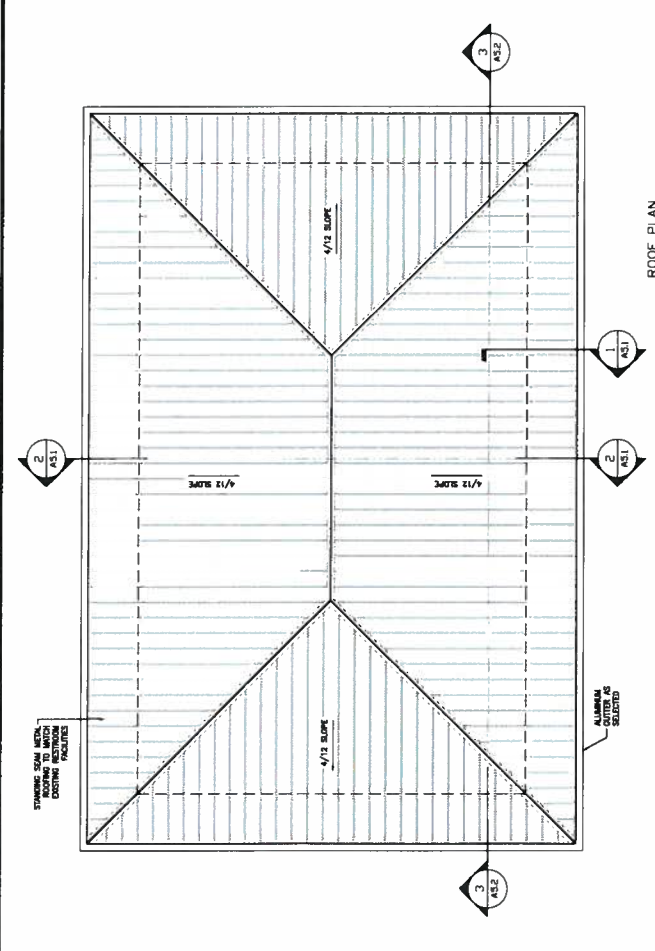
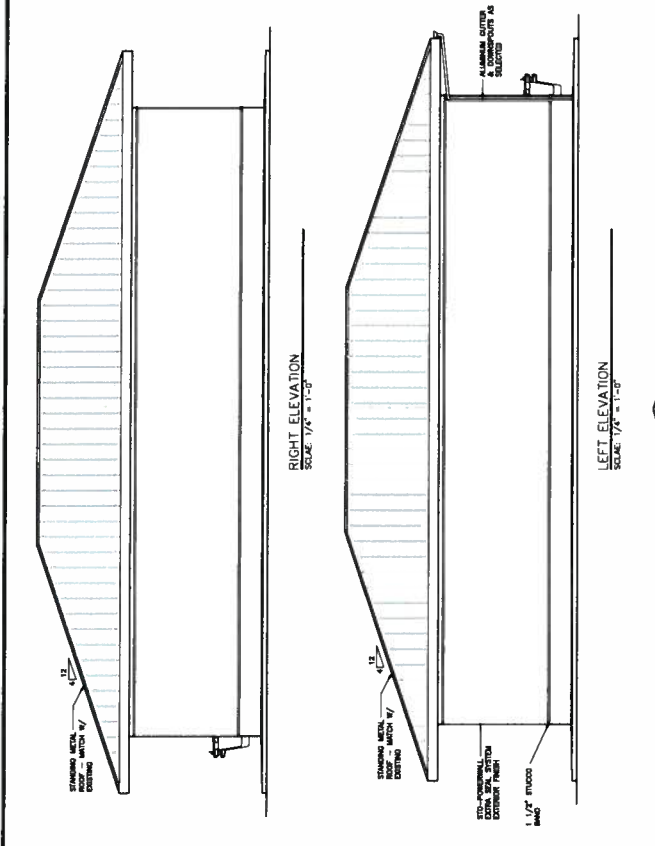
NOT RELEASED FOR CONSTRUCTION

SHEET: **1**

A2.1
 ROOF PLAN
 S10 DETAILS

check
 Date: 6-11-2016
 Job No. 18-02-2400

A2.1
 FOR
OVERVIEW BEACH PARK
JEKYLL ISLAND AUTHORITY
JEKYLL ISLAND, GEORGIA
 Larry L. Bryson,
 Architect, P.C.
 228 Redfern Village, Suite 201
 St. Simons Island, Georgia 31522
 (912) 638-6745



STO
 StoQuik® Gold System for Soffits & Ceilings
 System Components
 Detail No.: 1-14P
 Date: December 2012

STO
 StoPowerwall® Extruded Polystyrene (EPS) Backup
 Assembly Components
 Detail No.: 654.00
 Date: April 2016

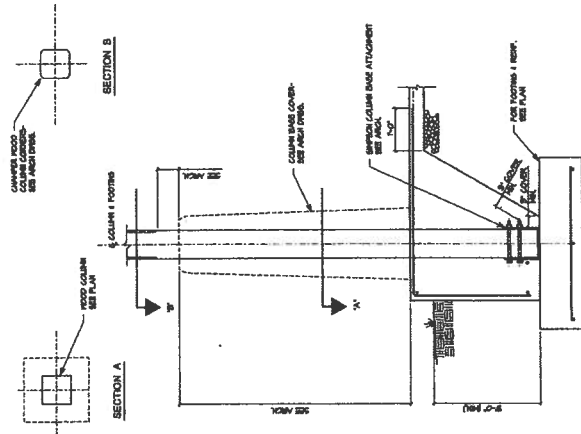
STO STUCCO DETAILS
 #12

GA-DNR

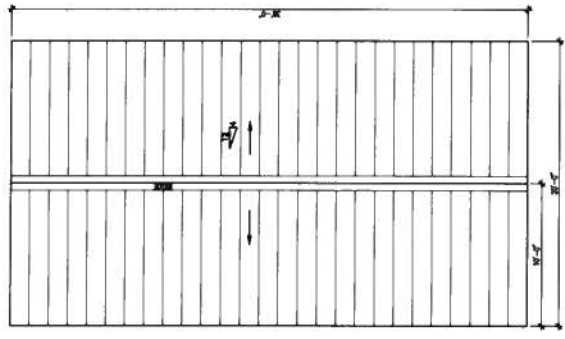
JUL 30 2018

Harsh & Shore Mgt. Program

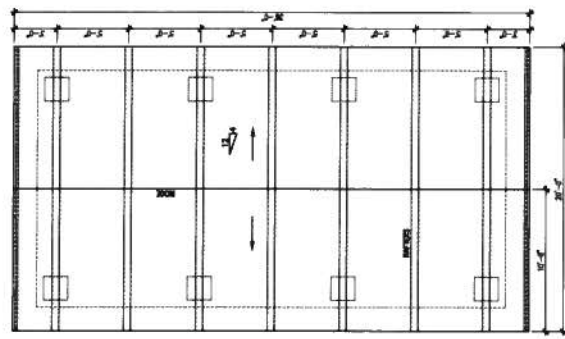
NOTE:
REFER TO SHEETS PV1.1, 1.2, &
1.3 FOR INFORMATION NOT SHOWN



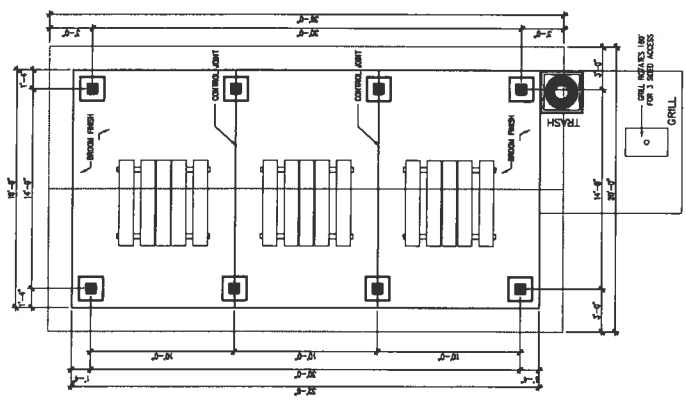
EXTERIOR WOOD COLUMN & FOOTING DETAIL
N.13



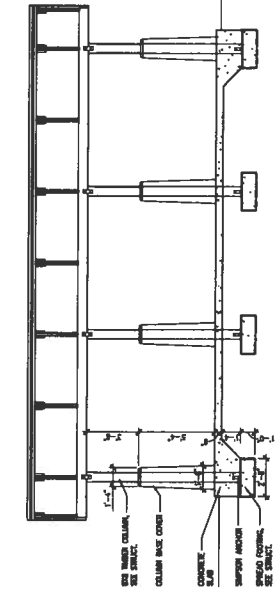
GROUP PAVILION ROOF PLAN
SCALE: 1/4" = 1'-0"



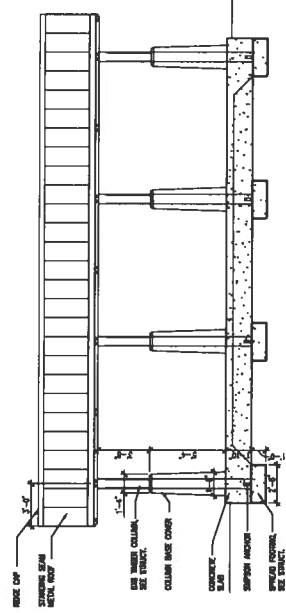
GROUP PAVILION ROOF FRAME PLAN
SCALE: 1/4" = 1'-0"



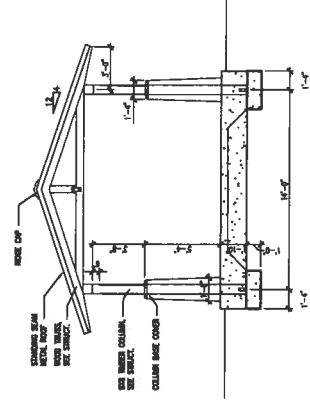
GROUP PAVILION FLOOR PLAN
SCALE: 1/4" = 1'-0"



GROUP PAVILION SECTION THRU
SCALE: 1/4" = 1'-0"



GROUP PAVILION SIDE ELEVATION
SCALE: 1/4" = 1'-0"



FRONT ELEVATION
SCALE: 1/4" = 1'-0"

Larry L. Bryson,
Architect, P.C.
238 Redfern Village, Suite 201
St. Simons Island, Georgia 31522
(912) 638-6746

A RESTROOM FACILITY
FOR
OVERVIEW BEACH PARK
JEKYLL ISLAND AUTHORITY
JEKYLL ISLAND, GEORGIA

DATE:	6-11-2018
JOB NO.:	18-02-2400
REV.	
NO.	
DATE	

PV1.4

GA DNR

JUL 30 2018

Marsh & Shore Mgt. Program