



MARK WILLIAMS
COMMISSIONER

DOUG HAYMANS
DIRECTOR

MAY 17 2019

Jody Schiesser
Harry Haft Productions Inc.
906 Drayton Avenue
Savannah, GA 31401

Re: Letter of Permission, Activities for Harry Haft Productions, Inc., Production in the State's Shore Protection Act Jurisdiction, Various Locations on Tybee Island, Chatham County, Georgia

Dear Mr. Schiesser:

This Letter of Permission (LOP) is in response to your revised request dated May 14, 2019 to film scenes for the above referenced production. The proposed project includes the temporary use of vehicles and production equipment in areas of the State's Shore Protection Act (SPA) Jurisdiction on Tybee Island, Chatham County, Georgia. The project will begin no sooner than 15 days after the date on this letter and be completed no later than June 30, 2019. Production dates are subject to change due to weather or unforeseen production changes.

As proposed, the production company has identified the following locations within the SPA Jurisdiction with the following activities being proposed:

Chatham Avenue dune crossover and adjacent beach:

The Chatham Avenue location includes the Chatham Avenue dune crossover and the beach seaward of the crossover. Production Company activity will normally occur between 5:00 am and 8 pm. There is no scheduled night filming.

Temporary production activities at the Chatham Avenue location includes the placement of production equipment and the use of production vehicles in SPA Jurisdiction. Additionally, the Company will construct a platform on the seaward face of the scarped sand dune and artificially landscape the area. The Company will submit a list of vegetation to the Department for approval prior to use during production. Cameras, monitors, lights, and sound equipment will be positioned on the beach, landward of ordinary high water and seaward of the dunes.

Approximately 1-2 truckloads of approved beach quality sand consistent with Georgia Department of Natural Resources Wildlife Resources Division (GA DNR WRD) standards procured from an upland location will be delivered to the beach using the Inlet Avenue vehicular access point for the purpose of creating an artificial dune. Discharge of each load will occur in the Inlet Avenue parking lot landward of the beach in coordination with the City of Tybee Island Department of Public Works. A small bobcat and an ATV with a dump bed will transport the sand to the approved location on Chatham Avenue. If needed, sand will be bagged to provide a stable base for artificial dune construction. Additionally, a wooden platform will be constructed to allow crew access to the landward side of the artificial dune. Using pre-cut lumber and hand tools only, the crew will install a small working platform seaward of

MAY 17 2019

Harry Hall SPA LOP

Page 2 of 5

the exiting dune. The artificial dunes will be crafted around the working platform using bagged and/or loose, approved sand. Driftwood and native vegetation in pots will be strategically planted in the artificial dune and adjacent dune field using hand tools only. Dune fencing, consistent with existing dune fence in the vicinity, will be installed in a manner consistent with GA DNR WRD Sand Fence Guidelines. All driftwood, potted vegetation and dune fence will be removed upon completion of production.

Additionally, the production crew will hand rake or hand sweep the beach to remove any debris as well as vehicle tracks and footprints from crew and talent on set. The proposed area to be manicured is approximately 30 yards x 30 yards and will be no more than three inches deep. Within this work area, the Company will temporarily remove benches, trash cans, and signage in the dunes & the surrounding area. At completion of production, crew will re-install any removed signage, remove any man-made props and re-distribute any sand over the area to make it consistent with the natural topography.

To service the set seaward of the Chatham Avenue dune crossover, a trailer-based power plant generator will be positioned in the Chatham Avenue parking area. The company will run no more than six (6) cables along the existing dune crossover at this location. Bundled power cables will run from the power source along the dune crossover and dry, sand beach. The power cable bundles will be identified & secured appropriately. No gas-powered generators are authorized for use on the beach.

All materials, vehicles and equipment associated with the location known as the Chatham Avenue dune crossover and adjacent beach will be staged in the Chatham Avenue beach parking lot. During production, the dune crossover will be closed to the public. Portable restroom(s) will be temporarily positioned on the parking area.

Vehicular access for all production equipment to be used at the Chatham Avenue location will access the set at Inlet Avenue.

1605 E Chatham Avenue dock and adjacent beach:

The location at 1605 E Chatham Avenue includes the private residence, dock and the beach seaward of the residence. Production Company activity will normally occur between 5:00 am and 8 pm. There is no scheduled night filming.

Temporary production activities at 1605 E Chatham Avenue location includes the placement of production equipment and the use of production vehicles in SPA Jurisdiction. Cameras, monitors, lights, and sound equipment will be positioned on the beach, landward of ordinary high water and seaward of the dunes. Vehicular access for all production vehicles and equipment to the seaward side of the 1605 E. Chatham Avenue location will occur at Alley #3.

To service the set seaward of 1605 E Chatham Avenue, a trailer-based power plant generator will be positioned on private property landward of the residence. The company will run no more than six (6) cables along the existing hardscape and the dock walkway at this location. Bundled power cables will be identified & secured appropriately. No gas-powered generators are authorized for use on the beach or dock.

The Deck at Beachside Colony and adjacent beach:

The Deck at Beachside Colony and the adjacent beach location includes the existing commercial facility, dune paths and the beach seaward of the facility. Production Company activity will normally occur between 5:00 am and 8 pm. There is no scheduled night filming.

Temporary production activities at The Deck location include the placement of production equipment and the use of production vehicles in SPA Jurisdiction. Additionally, the Company will construct a platform and a sand dune and artificially landscape the flat sand beach area located seaward of the existing dune field. Cameras, monitors, lights, and sound equipment will be positioned on the beach, landward of ordinary high water and seaward of the existing dune field.

Production will occur along the path from The Deck leading to the beach, along the path from the Beachside Colony Resort pool leading to the beach, and on the beach seaward of The Deck and Beachside Colony Resort. Filming activities includes six (6) actors and about forty (40) background extras along with set dressing typically seen during the period (chairs, umbrellas, coolers), crew members, camera placements, lighting control and grip equipment.

Approximately 1-2 truckloads of clean, beach quality sand consistent with GA DNR WRD standards, procured from an approved upland location, will be delivered to the beach using the 3rd Street vehicular access point. Discharge of each load will occur in the 3rd Street parking lot landward of the beach in coordination with the City of Tybee Island Department of Public Works. A small bobcat and an ATV with a dump bed will transport the sand to the approved location on the beach seaward of The Deck. If needed, sand will be bagged to provide a stable base for artificial dune construction. Additionally, a wooden platform will be constructed to allow crew access to the landward side of the artificial dune. Using pre-cut lumber and hand tools only, the crew will install a small working platform seaward of the exiting dune field and emergent vegetation. The artificial dune will be crafted around the working platform using bagged and/or loose, clean sand. Driftwood and native vegetation in pots will be strategically planted in the constructed dune and adjacent dune field using hand tools only. Dune fencing, consistent with existing dune fence in the vicinity, will be installed in a manner consistent with GA DNR WRD Sand Fence Guidelines. All driftwood, potted vegetation and dune fence will be removed upon completion of production.

Additionally, the production crew will hand rake or hand sweep the beach to remove any debris as well as vehicle tracks and footprints from crew and talent on set. The proposed area to be manicured is approximately 30 yards x 30 yards and will be no more than three inches deep. Within this work area, the Company will temporarily remove benches, trash cans, and signage in the dunes & the surrounding area. At completion of production, crew will re-install any removed signage, remove any man-made props and re-distribute any sand over the area to make it consistent with the natural topography.

Although dune plants tolerate harsh beach conditions, they cannot withstand foot and vehicular traffic. These activities crush emergent vegetation and plant roots. Trampling by pedestrians and traffic such as four-wheel vehicles often lead to greater sand removal by wind. In addition, soil compaction often results from vehicular traffic and decreases water infiltration, leading to erosion from rain and increased damage during droughts. Production activities within the dune field is limited to existing dune paths only.

To service the set seaward of The Deck, a trailer-based power plant generator will be positioned in the parking area or hardscape associated with the commercial facility. The company will run bundled power cables along the existing hardscape at this location and the dry, sand beach. The power cable bundles will be identified & secured appropriately. No gas-powered generators are authorized for use on the beach.

Vehicular access for all production vehicles and equipment to the beach seaward of the location will occur at the 3rd Street vehicular access point.

MAY 17 2019

Harry Haft SPA LOP

Page 4 of 5

General Provisions:

At all vehicular access points, all production equipment will access the production location across temporary, pre-fabricated mats placed along a designated travel corridor landward of ordinary high water and seaward of the dunes. Mats will help minimize impacts to the ecosystem at the location while allowing for vehicular ingress & egress across the dry sand beach. The travel corridor will be delineated by DNR staff and will be built seaward from the DNR-approved vehicular beach access point. The designated travel corridor will enhance public safety, protect the integrity of the dynamic dune field and existing emergent vegetation at each location.

At all locations, the Company proposes the use of production equipment on the beach, including cameras, video monitors, sound equipment, lights, shading flags and their support stands, sand bags, as well as tents (10ft. X 10ft.), crew chairs, no less than two (2) 12ft. X 12ft. framed shading flags, craft service coolers and tables for crew. The production crew will operate no more than five (5) gators (and/or gas powered golf carts) with small trailers for the purpose of hauling production equipment to this location. The gators will transport camera equipment, electric cables, lights, grip equipment and props associated with set dressing. Additionally, the Company is requesting the use of two (2) pick-up trucks to expedite set-up and break down. Production vehicles will not drive in or enter the sand dune area. Production vehicles are solely for the transportation of production equipment only. All crew and talent will access the set via the most convenient public access dune crossover or pedestrian access point. At the end of production, all matting and equipment will be removed, and the beach will be hand raked in a manner to be consistent with the topography of the immediate surrounding area. The production crew will also be responsible for re-installing benches, trash cans, and signage removed while on location.

Public access to the production area will be managed by crew and security. Public access may be temporarily restricted, but otherwise, all efforts shall be made to allow reasonable public access to the beach at this location.

The Department authorizes the temporary activities in SPA jurisdiction in conjunction with the film production, Harry Haft, as depicted in the attached description.. Any deviations from the current approved project description, equipment list or location footprints may require further review or additional authorization.

The Department will inspect all areas as described above during and at the termination of the temporary activities to ensure that those areas are in a condition consistent with the authorization granted by this LOP. All persons associated with the Company must remain off the dunes and dune vegetation during setup, filming and breakdown at the approved locations. No thriving vegetation is to be disturbed during approved activities. Any incidental impacts to the dunes or vegetation must be restored to pre-activity vegetated and topographic conditions as determined by the Department.

Prior to placement of beach quality sand in the areas described above, documentation from an approved laboratory must be provided to the Department confirming that the sand is consistent with GA DNR WRD standards for beach quality sand including sediment grain size, composition, and color.

Because the project occurs between May 1st and October 31st, turtle nesting season, an individual with a DNR Sea Turtle Cooperators Permit must survey the area to be used by the equipment daily, and prior to the work beginning. All sea turtle nests must be avoided and no activity may occur within 20ft. of a nest area.

This LOP is valid for the activities at the locations described above and may begin no sooner than 15 days after the date of this letter and completed no later than June 30, 2019. Any change in the type of

MAY 17 2019

Harry Haft SPA LOP

Page 5 of 5

activities, date, or locations without prior notification and approval from this office could result in revocation of this LOP and the requirement to immediately cease all activities followed by removal of the materials and related structures. **This project must comply with all other federal, state, and local statutes, ordinances and regulations.**

Thank you for working with the Department on this project. Please do not hesitate to contact me or Deb Barreiro 912.266.3695, if you have any questions or concerns.

Sincerely,



Jill Andrews
Chief, Coastal Management Section

Enclosures: Project Description, Revisions & Vicinity Map; GA DNR Sand Fence Guidelines;

cc: Daniel Carpenter
City of Tybee Island
P.O. Box 2749
Tybee Island, GA 31328

Robyn Rosner
City of Tybee Island
P.O. Box 2749
Tybee Island, GA 31328

Beth Nelson
Film Savannah
Savannah Regional Film Commission
P.O. Box 128
Savannah, GA 31402

LOP20190051

DNR requests for *filming* on the beach on Tybee Island

Harry Haft Productions, Inc. - HARRY HAFT (feature film)

Beach Areas 19 / 20 - Requested 05/14/19

- Production requests permission for beach access between Tybee Island Beach Areas 19 & 20 for preparation, filming, and strike/restoration beginning on June 3rd, 2019 and ending June 8th, 2019. Production also requests permission for Rain Cover Date(s) from June 11th - 13th, 2019. Filming will take place between 5am to 8pm with consideration for previously scheduled events. We anticipate filming will take place one of those days on the beach out front of Beachside Colony Resort and The Deck Restaurant, currently scheduled June 7th, 2019, with prep and/or addition of new, tested sand as described below to occur June 3rd or June 4th. Any work before sunrise would be conducted with special lighting in accordance with sea turtle concerns.
- Production requests permission to establish a film set zone on the southern point of Tybee Island Beach in the areas marked Beach Area 19 and 20, moving between the beach access path at 3rd Avenue and the beach access pedestrian path at Center Street.
- Production requests permission to restrict public access on the beach in this zone as needed during filming.
- Production requests permission to use the public beach access crossover at 3rd Avenue for vehicle access to support filming activities.
- Production requests permission to use the public beach access crossover at Center Street for hand-carried equipment and crew member access to support filming activities.
- Production requests permission to use and film on and along the path from The Deck leading out onto the beach, the path from the Beachside Colony Resort pool leading to the beach, and on the beach itself out front of The Deck and Beachside Colony Resort. See the four photos attached to this email for the beach area between 3rd Street and Center Street. Filming activities include two (6) actors and about (40) background extras in a scene enjoying the beach, with set dressing such as one would bring to the beach in 1963 (chairs, towels, coolers, etc), crew members, camera placements, and lighting control and grip equipment.
- Production requests permission for the following public parking areas:
 - o Eight (8) parking spaces on the condo side of 3rd Avenue for equipment trucks, movie tow plant generator(s), and other vehicles.
 - o Five (5) parking spaces on the condo side of Center Street for equipment trucks, movie tow plant generator(s), and other vehicles.
 - o Eight (8) working spaces on the east side of Butler Avenue for equipment trucks.
- Requesting permission for use of **GATORS(5) WITH TRAILERS, AND PICK-UP TRUCKS(2) ON THE BEACH TO TRANSPORT EQUIPMENT**. Temporary, pre-fabricated dune Mats will be used to create a travel corridor to help minimize impact to the sand.
- I don't think we'll need this here, so this ask is a 5% maybe option, but since we will have sand from our shoot on the South Beach, Production requests permission on behalf of Maxwell Beatty Sand Supply, INC for use of **TANDAM DUMP TRUCK(1) TO TRANSPORT NEW, TESTED AND APPROVED MASONARY SAND TO BEACH ACCESS POINTS AT 3rd Avenue**. From that

point, our stakebed pickup trucks will move sand to the beach for shaping. Sand is being tested by local lab Whitaker Laboratory.

- Production requests permission to temporarily take down during filming, or cover or disguise, any modern signage in the filming area on the beach.
 - Requests permission to place filming equipment on the beach; including cameras, video monitors, sound equipment, lights and shading flags and their support stands, sand bags, tents (no bigger than 10'X10'), crew chairs, 2 - 12'X12' framed shading flags, craft service coolers and snacks. No generators will be placed on the beach.
 - Requests permission for electric cable runs on beach access crossover and over/around the dunes to support filming on the beach. All cables will be properly secured and tucked for public and environmental safety. Generators will be placed on the street side of the access points. Is it possible to do a cable run across the Center Street access point?
 - Request permission for dolly and track.
 - Request four 20x20 silk shade frames to control the sunlight.
-

DNR requests for *filming* on the beach on Tybee Island

Harry Haft Productions, Inc. - HARRY HAFT (feature film)

Beach Areas 1 - Requested 05/14/19

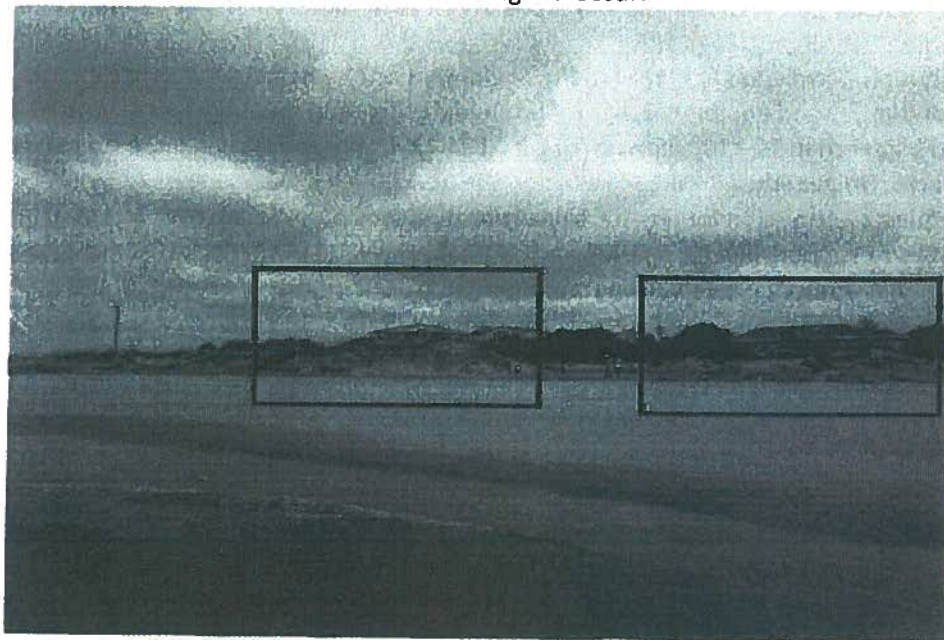
- Production requests permission for beach access between the Tybee Island Back River Fishing Pier and the Alley Street Back River access point in Tybee Beach Area 1 for preparation, filming, and strike/restoration beginning on June 3rd, 2019 and ending June 8th, 2019. Production also requests permission for Rain Cover Date(s) from June 11th - 13th, 2019. Filming will take place between 5am to 8pm with consideration for previously scheduled events. We anticipate filming will take place at a private Beach House property at 1605 E Chatham Avenue on one of those days, with possibly some background extras, set dressing, and light control equipment being placed on the back river beach near the property. This portion of the Harry Haft shoot at the Beach House is currently scheduled June 6th, 2019. Any work before sunrise would be conducted with special lighting in accordance with sea turtle concerns.
- Production requests permission to establish a film set zone on the back river beach of Tybee Island Beach in the area near 1605 E Chatham Avenue, around the dock on the back river that exists on this property.
- Production requests permission to restrict public access on the beach in this zone as needed during filming.
- Production requests permission to access the beach from the Beach House property to support filming activities.
- Requests permission to place filming equipment on the beach; including cameras, video monitors, sound equipment, lights and shading flags and their support stands, sand bags, tents (no bigger than 10'X10'), crew chairs, 2 - 12'X12' framed shading flags, craft service coolers and snacks. No generators will be placed on the beach.
- Requests permission for electric cable runs on beach access crossover and over/around the dunes to support filming on the beach. All cables will be properly secured and tucked for public and environmental safety. Generators will be placed on the street side of the access points.
- Request four 20x20 silk shade frames to control the sunlight.

DNR requests for *filming* on the beach on Tybee Island

Harry Haft Productions, Inc. - HARRY HAFT (feature film)

Requested 05/10/19

- Production requests permission for beach access for preparation, filming, and strike/restoration beginning on June 3rd, 2019 and ending June 8th, 2019. Production also requests permission for Rain Cover Date(s) from June 11th - 13th, 2019. Filming will take place between 5am to 8pm with consideration for previously scheduled events. We anticipate filming will take place one of those days on the south end of Tybee's Beach, currently scheduled June 5th, 2019, with prep and/or addition of new, tested sand as described below to occur June 3rd or June 4th. Any work before sunrise would be conducted with special lighting in accordance with sea turtle concerns.
- Production requests permission to establish a film set zone on the southern point of Tybee Island Beach in the areas marked Beach Area 2 and 3, moving between the beach access crossover at 19th Street and the beach access path at Inlet Avenue.
- Production requests permission to restrict public access on the beach in this zone as needed during filming.
- Production requests permission to use the public beach access crossover at 19th Street for vehicle access to support filming activities.
- Production requests permission to use the public beach access crossover at Chatham Avenue for equipment and crew member access to support filming activities.
- Production requests permission to use and film on and among the protected sand dunes at the southernmost point of the beach. (Pictures and diagram attached). Filming activities include two (2) actors, limited crew members, camera placements, and minimal lighting and grip equipment. These are the two dunes where filming will occur:



- Production requests permission to use the public beach access path at Inlet Avenue for equipment and crew member access, as well as filming a scene on the path between the Inlet Avenue parking and the beach. Temporary, pre-fabricated dune mats will be placed if the Picture Car in the scene is moved beyond the existing modern gate.
- Production requests permission to remove the modern gate at the start of the Inlet Avenue path leading to the beach for picture. Gate will be restored when filming is complete.
- Production requests permission for the following public parking areas:
 - o Fourteen (14) parking spaces in the parking lot area at the south end of Butler Avenue for equipment trucks, movie tow plant generator(s), and other vehicles.
 - o Twelve (12) parking spaces on the south side of 19th Street for equipment trucks and transportation vans.
 - o Ten (10) parking spaces on Inlet Avenue from Chatham Avenue to the beach for picture vehicles and support for filming, and one (1) portable restroom facility.
 - o Two (2) parking spaces in the public parking area at Chatham Avenue for one (1) large tow plant generator placement and one (1) portable restroom facility.

- Requesting permission for use of **GATORS(5) WITH TRAILERS, AND PICK-UP TRUCKS(2) ON THE BEACH TO TRANSPORT EQUIPMENT.** Temporary, pre-fabricated dune Mats will be used to create a travel coordinator to help minimize impact to the sand.
- Requesting permission on behalf of Maxwell Beatty Sand Supply, INC for use of **TANDAM DUMP TRUCK(1) TO TRANSPORT NEW, TESTED AND APPROVED MASONARY SAND TO BEACH ACCESS POINTS AT 19TH Street or Inlet Avenue.** From that point, our stakebed pickup trucks will move sand to the beach. The new sand will be used to round out the bottom of the dunes, which currently have a steep edge. Sand is being tested by local lab Whitaker Laboratory.
- Production requests permission to temporarily hide or disguise the concrete campbell barrier units. They will not be moved.
- Production requests permission to temporarily take down during filming, or cover or disguise, the signage that exists on the South Beach of Tybee Island where we intend to film by the dunes.
- Requests permission to place filming equipment on the beach; including cameras, video monitors, sound equipment, lights and shading flags and their support stands, sand bags, tents (no bigger than 10'X10'), crew chairs, 2 - 12'X12' framed shading flags, craft service coolers and snacks. No generators will be placed on the beach.
- Requests permission for electric cable runs on beach access crossover and over/around the dunes to support filming on the beach. All cables will be properly secured and tucked for public and environmental safety. Generators will be placed on the street side of the access points.
- Request permission for dolly and track.
- Request four 20x20 silk shade frames to control the sunlight.

HARRY HAFT

1. EXT. TYBEE BEACH - DAY
2. EXT. BEACH, BY CABANAS - DAY
FRIDAY, JUNE 7, 2019 - SHOOT DAY 3

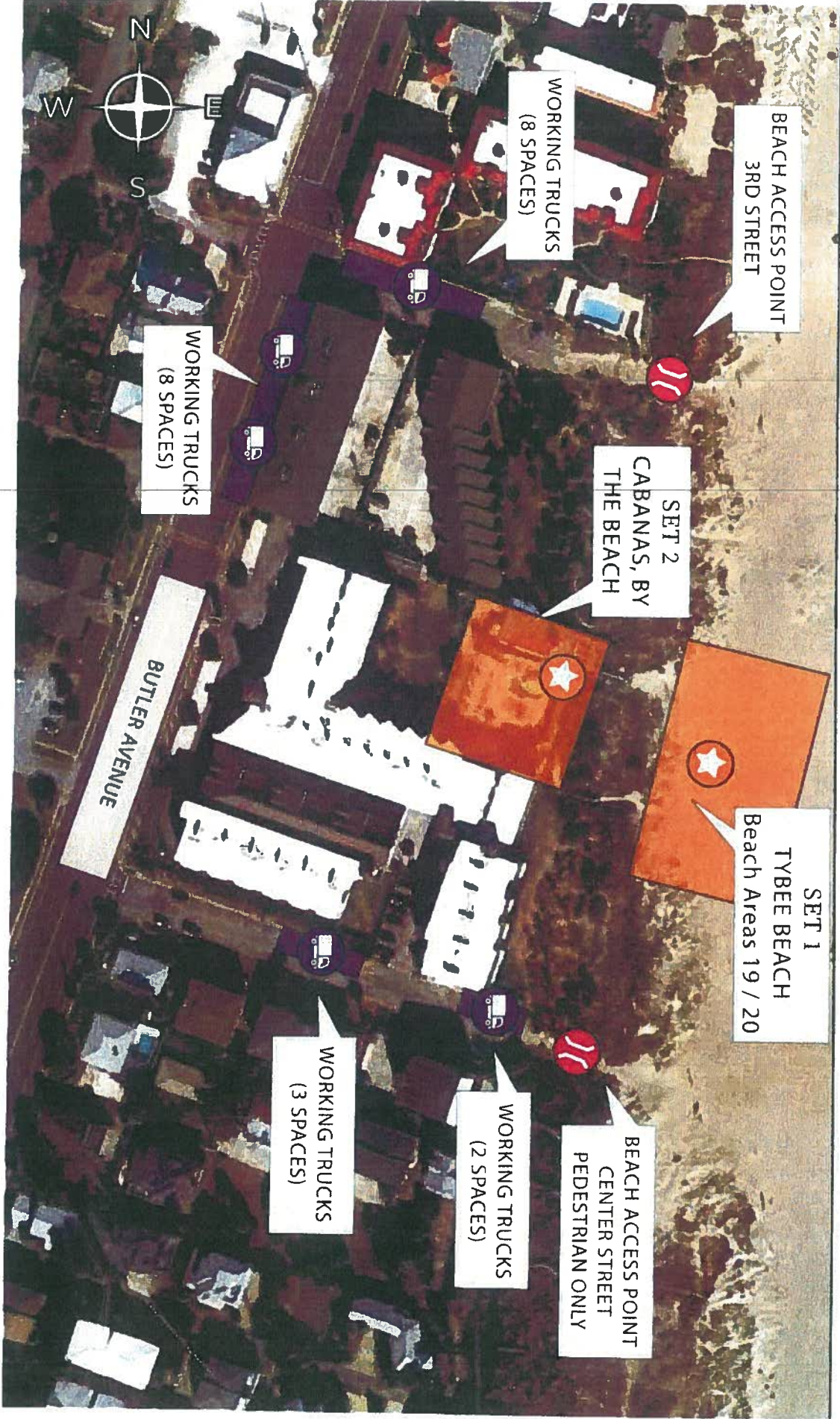
SET 1 - TYBEE BEACH
BEACH AREAS 19 / 20
3RD ST / CENTER ST
TYBEE ISLAND, GA
31328

SET 2 - BEACH, BY CABANAS
BEACHSIDE COLONY RESORT
404 BUTLER AVE
TYBEE ISLAND, GA
31328

BEACH ACCESS POINTS
NORTH POINT - 3RD ST
SOUTH POINT - CENTER ST
TYBEE ISLAND, GA
31328

WORKING TRUCKS
3RD ST / BUTLER AVE
CENTER ST
TYBEE ISLAND, GA
31328

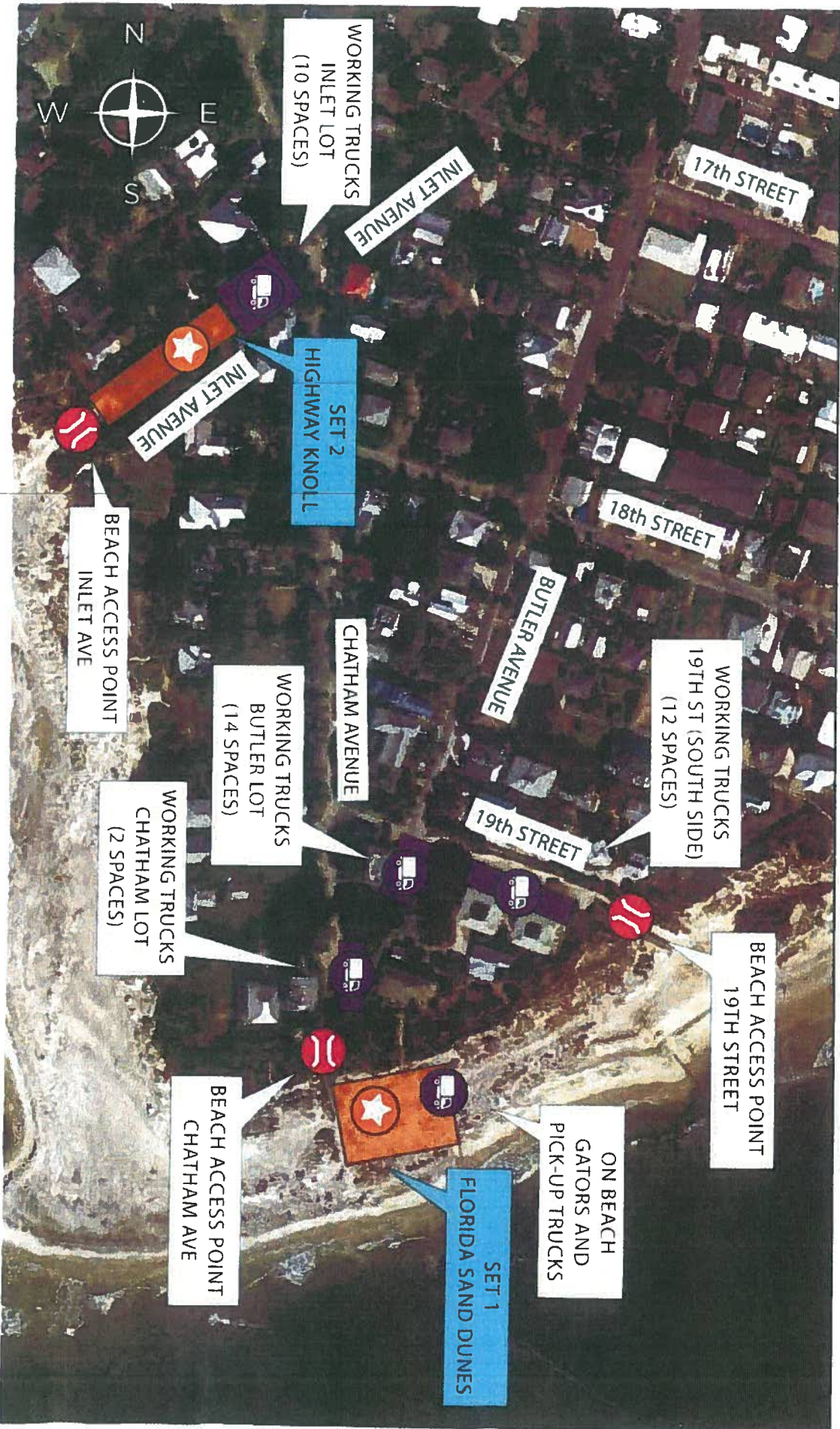
CATERING AT THE
DECK
*CREW PARKING
BASECAMP - TBD
OFF PROPERTY



HARRY HAFT

1. EXT. TYBEE SAND DUNES - DAY 2. EXT. HIGHWAY KNOLL - DAY JUNE 5, 2019 - DAY 01

| | | | | |
|--|---|---|--|--|
| SET 1 - TYBEE SAND DUNES BEACH AREAS 2 / 3 CHATHAM AVENUE TYBEE ISLAND, GA 31328 | SET 2 - HIGHWAY KNOLL BEACH AREA 2 INLET AVE TYBEE ISLAND, GA 31328 | BEACH ACCESS POINTS EAST POINT - 19TH ST SOUTH POINT - CHATHAM AVE WEST POINT - INLET AVE TYBEE ISLAND, GA 31328 | WORKING TRUCKS 19TH ST / BUTLER AVE CHATHAM AVE / INLET AVE TYBEE ISLAND, GA 31328 | CREW PARKING BASECAMP CATERING TBD OFF PROPERTY |
|--|---|---|--|--|





Georgia Department of Natural Resources Sand Fence Guidelines



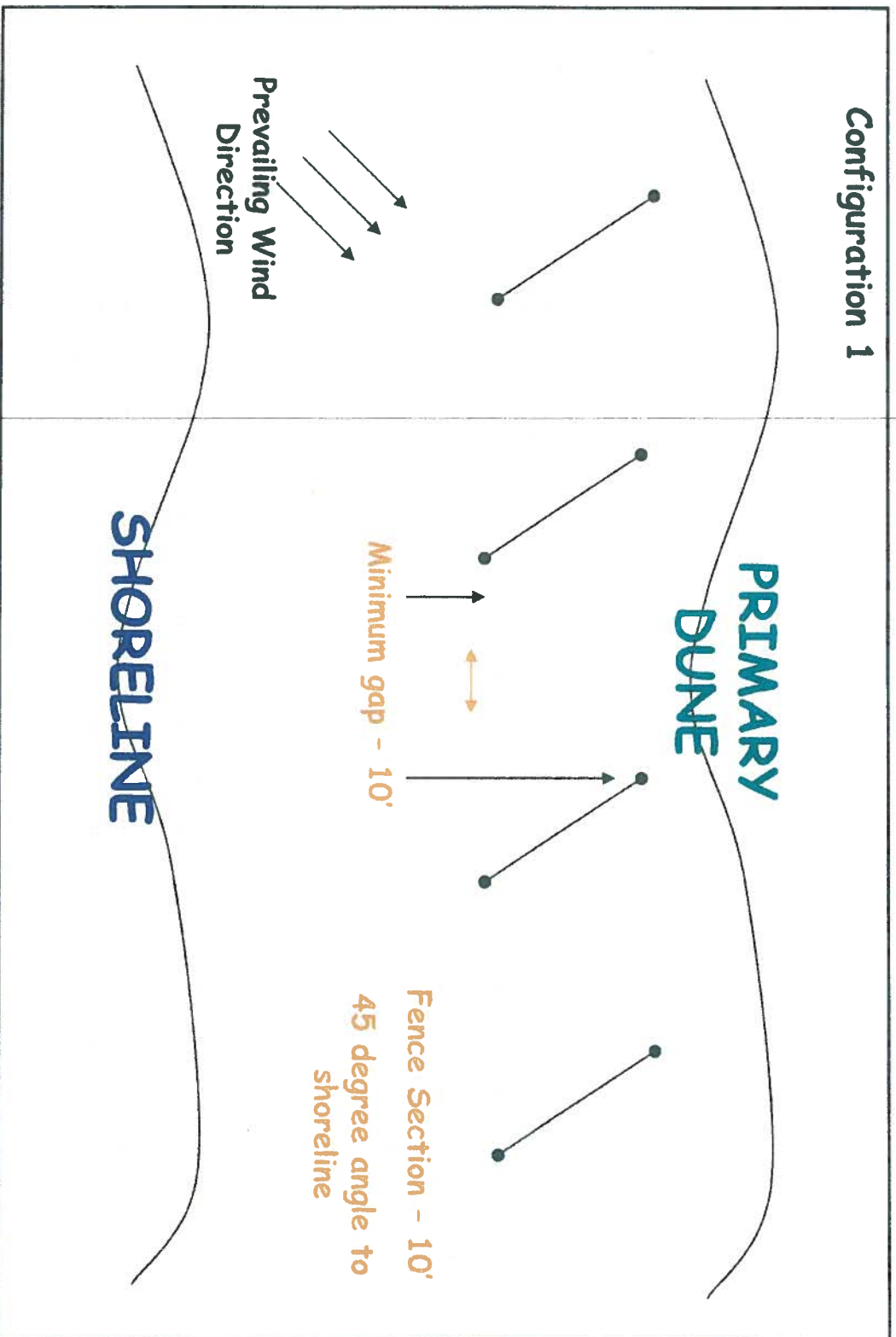
Sand fencing is used extensively along the Atlantic Coast to build and stabilize dunefields and control human access to the beach. Unfortunately, some sand fence configurations have been shown to restrict or inhibit sea turtle nesting. The **Management Plan for the Protection of Nesting Loggerhead Sea Turtles and their Habitat in Georgia** (II, B, 2, C) stipulates that "fencing must be placed so as not to deter turtles' access to nesting areas, and arranged to prevent trapping nesting turtles". The following sand fence guidelines are designed to provide good dune building and stabilization performance, while minimizing impacts to sea turtles.

Standard sand fencing consists of 4' wooden slats wired together with spaces between the slats. Woven fabric type fencing has also been successfully used in dune restoration projects. However, it is important that fabric fencing have a 40% to 60% open to closed space ratio to be effective. Fabric fencing is susceptible to ultraviolet degradation causing it to sag and lose its original shape. With sufficient maintenance, this problem may be avoided.

Guidelines for Sand Fence Placement:

1. Installation and repositioning of sand fences shall be conducted outside the marine turtle nesting season (May 1 – October 15) unless approved by the USFWS or GADNR Nongame-Endangered Wildlife Program.
2. Sand fence shall be installed in a temporary manner in accordance with the attached conceptual drawing. Configuration 1 consists of 10 foot sections of fence spaced at a minimum of 10 feet on a diagonal alignment to the shoreline (facing the prevailing wind). Configuration 2 consists of two 10 foot sections placed in an "open V" shape with the wider end facing the shoreline. Minimum space between ends of the "V" is 10 feet, and minimum width between the close ends of the "V" is 7 feet. For both configurations, the approximate angle of the fence to the shoreline is 45 degrees.
3. Sand Fence shall not be placed in the inter-tidal zone. Sand Fence must be placed above the highest spring high tide line, preferably adjacent to the primary dune.
4. Sand Fence shall not be placed within 7' of a beach scarp.
5. Sand Fence shall not be placed in front of an existing fence until the existing fence is completely buried.
6. Sand fences shall not be placed to control pedestrian traffic seaward of the secondary dunes. A post and rope fence may be used to restrict pedestrian access without impacting nesting marine turtles.
7. If fence material is damaged, debris must be removed from the beach area by the owner in an expeditious manner.

Configuration 1



Configuration 2

