



COASTAL RESOURCES DIVISION  
ONE CONSERVATION WAY · BRUNSWICK, GA 31520 · 912-264-7218

WALTER RABON  
COMMISSIONER

DOUG HAYMANS  
DIRECTOR

June 1, 2026

Cliff Gawron  
Jekyll Island Authority  
100 James Road  
Jekyll Island, GA 31527

**Re: Letter of Permission (LOP), Temporary Activities, Placement of a Fireworks Display, Jekyll Island, Atlantic Ocean, Glynn County, Georgia, (GPS 31.05440°N/-81.40668°W)**

Dear Mr. Gawron:

This Letter of Permission (LOP) is in response to your request, dated May 28, 2026, to set up equipment for a Fireworks Show held by the Jekyll Island Authority, in conjunction with Southern Sky Fireworks, LLC., within Shore Protection Act (SPA) jurisdiction on July 4, 2026.

The primary goal is to launch fireworks on an area of bike path outside of SPA jurisdiction as previously done in 2025. However, as a contingency plan if environmental conditions are too dry, the event will occur on an area of beach, in the vicinity of Tortuga Jacks Restaurant, as depicted in the attached description and site map.

If the contingency plan is activated, a flatbed trailer will be hauled onto the beach with a ¾ ton 4-wheel drive pick-up truck to accomplish the set-up. A 9-10 frontend loader will follow the vehicle and assist the vehicle and trailer, if needed, through the sand. The flatbed trailer will serve as the firework launch site and will be located approximately 180 feet south of the existing Sand Bar Warning Sign. During the fireworks display, two (2) pickup trucks will be parked near the flatbed trailer to carry staff and additional equipment to and from the launch site. The equipment will travel to the launch site via a ramp located approximately 1,000 yards south of the launch site just north of the JIA Convention Center, a DNR approved vehicle access point. No materials or equipment will be stored overnight seaward of the primary dunes.

A safety fence will run from the tideline up to the south side of Tortuga Jack's and terminate at the crossover and bike path. This section of fence will continue in a northerly direction along the eastern edge of the bike path and terminate at Tortuga Jack's restaurant. A second safety fence will run along the east shoulder of Beachview Drive, immediately north of the Tortuga Jack's restaurant, where it will head north until reaching the intersection of Beachview Drive and the south entrance of the Jekyll Island Club Beach Pavilion and continue east towards the tideline. As the tide rises and falls, the fence will be extended or removed, so it terminates as close to the tide as feasible. Staff will guard the ends of the fence at these locations to prevent guests from

entering the area. Signage will be placed on the fence or installed on 4in. x 4in. posts to keep pedestrians out of the safety zone. An emergency 4-wheel drive beach cruiser will be stationed at the launch site. Pick-up trucks will be used during the installation and removal of the safety fencing, and to assist with the removal of the flatbed trailer.

JIA staff will begin installing the safety fence above the high tide line on July 2, 2026. The remaining safety fence will be installed and removed on July 4, 2026. The flatbed trailer will be taken to the launch site early morning after sunrise on July 4, 2026, and be positioned above the wrack line and seaward of the sand dunes. All materials, equipment, litter, and debris will be removed by the morning of July 5, 2026. The project will begin no sooner than July 2, 2026, and be completed no later than July 5, 2026.

As these activities will occur between May 1<sup>st</sup> and October 31<sup>st</sup>, sea turtle nesting season, all sea turtle nests must be avoided, and no activity may occur within 20ft. of a nest area. No unauthorized equipment may be stored on the beach overnight. No artificial light sources will be used for this event.

The Department authorizes the placement of the fireworks set up equipment as depicted in the attached description and site map and has no objection to the action. **No unauthorized equipment, materials or debris may be placed, disposed of, or stored in jurisdictional areas.** Any incidental damage to dunes or dune vegetation will require restoration to be coordinated through this office. This LOP is valid for the above-mentioned project. Any change in the use, location, dimensions, or configuration of the approved project, without prior notification and approval from this office could result in revocation of this permission and in the required removal of the related structures.

This LOP does not relieve you from obtaining any other federal, state, or local permits. If you have any further questions or concerns regarding this or any other projects, please feel free to contact Beth Byrnes at (912) 266-0277.

Sincerely,



Jill Andrews  
Chief, Coastal Management Section

Enclosures: Project Description and Drawings

Cc: Cliff Gawron, via email

File #: LOP20260050

May 28, 2026

Josh Noble  
Marsh & Shore Program Manager  
Coastal Resource Division, GA Department of Natural Resources  
One Conservation Way, Suite 300  
Brunswick, GA 31520

Dear Josh,

The Jekyll Island Authority requests permission as an emergency contingency plan, to hold its annual Fireworks Extravaganza on the beach with the launch site in the vicinity of Tortuga Jacks Restaurant on the evening of July 4th at approximately 9:00 p.m. (see included site map). It is our primary goal to launch the fireworks in the same location as last year which was outside of the SPA jurisdiction area, but if environmental conditions are too dry, the Jekyll Island Fire Department will need to put the emergency contingency plan into action.

The Jekyll Island Authority, in conjunction with Southern Sky Fireworks (a pyrotechnics company) will need to haul a flatbed trailer onto the beach which staff will utilize as a platform to launch this year's firework displays. The trailer will be brought to site in the early morning on July 4th via our approved access ramp which is located about 1000 yards south of the launch site. The flatbed trailer will be primarily hauled to the site with a  $\frac{3}{4}$  ton 4 wd pickup truck, but a 9-10 front end loader will follow the vehicle and assist the vehicle if it or the trailer gets bogged down in the sand. Trailer will be removed from the site in the same manner. The trailer will serve as the launch site and will be located approximately 180' south of the existing Sand Bar Warning Sign. Crews will only work on setting up for the fireworks during daylight hours and no additional artificial light sources will be present on the beach at night. To secure a 500' wide safety zone around the launch site, safety fence will be installed that consists of metal posts that are driven into the sand with orange safety fence attached with wire or quick ties. The fence will be installed to prevent pedestrians from entering the safety zone. It will be installed at the tide line and run through the primary dune field and up to the intersection of Tortuga Jacks beach crossover and the bike path. This section of fence will continue in a northerly direction along the eastern edge of the bike path and terminate at Tortuga Jacks Restaurant. A second section of safety fence will be installed along the east road shoulder of Beachview Drive, immediately north of Tortuga Jacks Restaurant. It will head north until reaching the intersection of Beachview Drive and the south entrance of the Jekyll Island Club Beach Pavilion. It will then continue directly east through the primary dune where it will terminate back at the tide line. As the tide rises and falls, the fence will be extended or removed to terminate the fence as close to tide line as is feasible. Staff will guard the ends of the fence in these locations to prevent guests from

entering the safety zone. Additional temporary directional signage will be tied directly upon the safety fence or will be installed on 4"x4" posts.

In addition to the flatbed trailer, two pickup trucks will be parked near the trailer to run staff and supplies to and from the launch site. Emergency service staff will be posted at the trailer, and they will have their small 4-wheel drive beach cruiser at this location. All their fire trucks and other emergency vehicles will be parked nearby within the safety zone along Beachview Drive and west of the primary bike path, well away from any of the nearby dune habitats and well outside of the jurisdiction area.

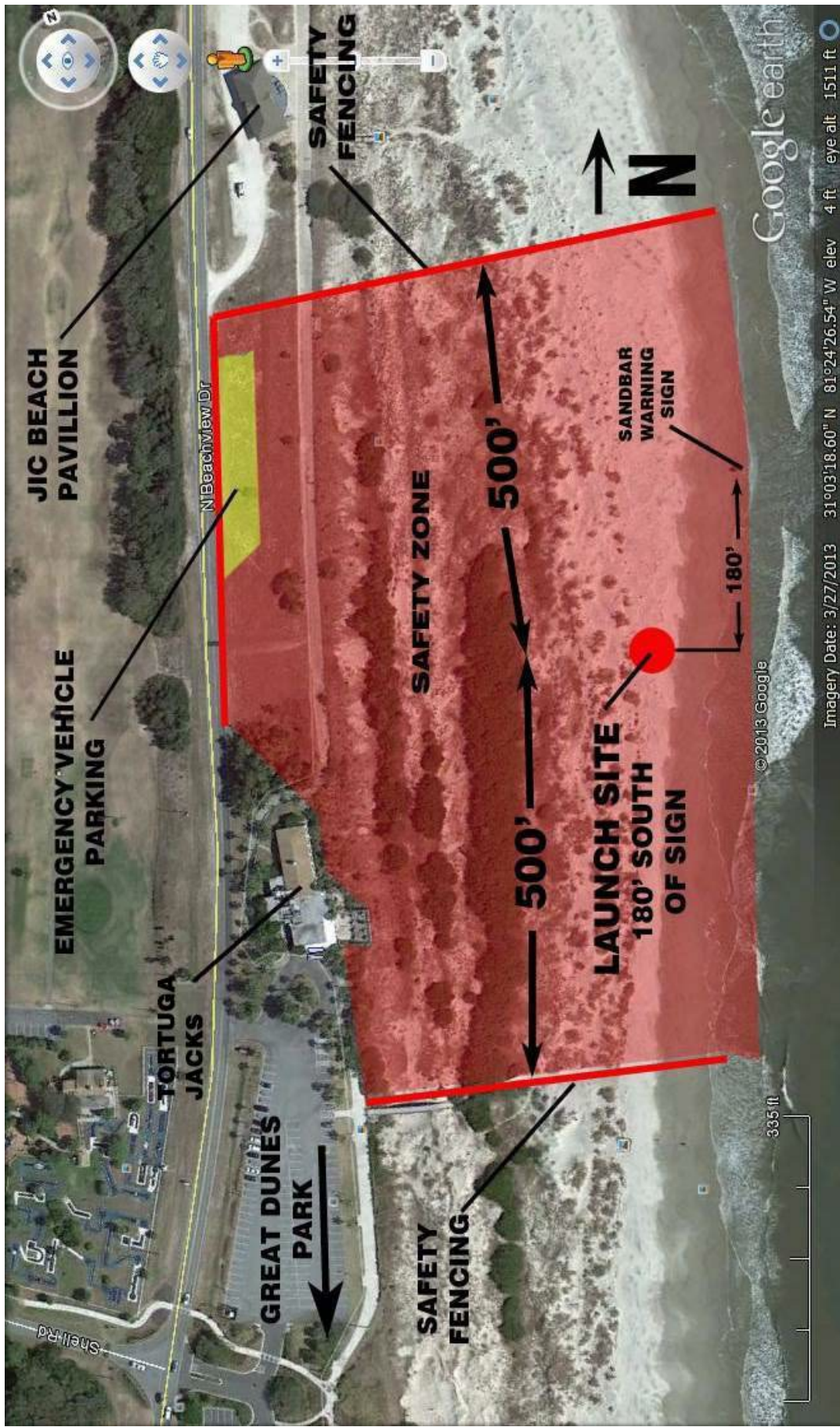
All guests in attendance to watch the fireworks display will be located within Great Dunes Park, the Beach Village, the Jekyll Island Club Beach Pavilion or on the public beach that lies outside of the safety zone. Staff will patrol the entire event site to prevent guests from entering the dunes and to safeguard any sea turtle nest sites.

All event activities will occur below the high tide line and there will be no disruption to the adjacent primary dunes by vehicles or staff in assembling the launch pad and site or during its removal at the conclusion of the event.

We anticipate full completion of this scope of work to be installed and removed within four days. Staff will begin installing safety fences above the high tide line on July 2<sup>nd</sup> as July 3<sup>rd</sup> is our observed work holiday and most of the maintenance staff will be off island. The trailer will be moved onto the beach in the early morning after sunrise on July 4<sup>th</sup> and positioned just above the rack line, but outside of the vegetated sand dunes. All support vehicles will remain off site after the trailer has been delivered to the launch site. The remaining safety fence on the beach will be installed and removed on July 4<sup>th</sup>. A few JIA pickup trucks will need to access the beach via the approved access ramp for JIA staff to both install and remove the safety fencing on the beach and to assist with the removal of the flatbed trailer from the beach immediately following the end of the fireworks display. The remaining signs and trash will all be removed from the event site on the morning of July 5<sup>th</sup>. JIA staff will need to access the dunes on foot to collect any trash or fireworks debris that has settled in the dunes, but all vehicles and support equipment will not be operated within the dunes and will remain below the high tide line.

If you have any further questions, please feel free to contact me. Thank you for your consideration of this request.

Cliff Gawron  
Director of Landscape and Planning  
912-506-2403 [cgawron@jekyllisland.com](mailto:cgawron@jekyllisland.com)



JIC BEACH PAVILLION

EMERGENCY VEHICLE PARKING

TORTUGA JACKS

GREAT DUNES PARK

SAFETY FENCING

SAFETY ZONE

500'

500'

LAUNCH SITE  
180' SOUTH  
OF SIGN

SANDBAR WARNING SIGN

180'

335 ft

Google earth

Imagery Date: 3/27/2013 31°03'18.60" N 81°24'26.54" W elev 4 ft eye alt 1511 ft