

TBE OF DUNE AS REVEALED BY GEORGIA DNR
AUGUST 2023

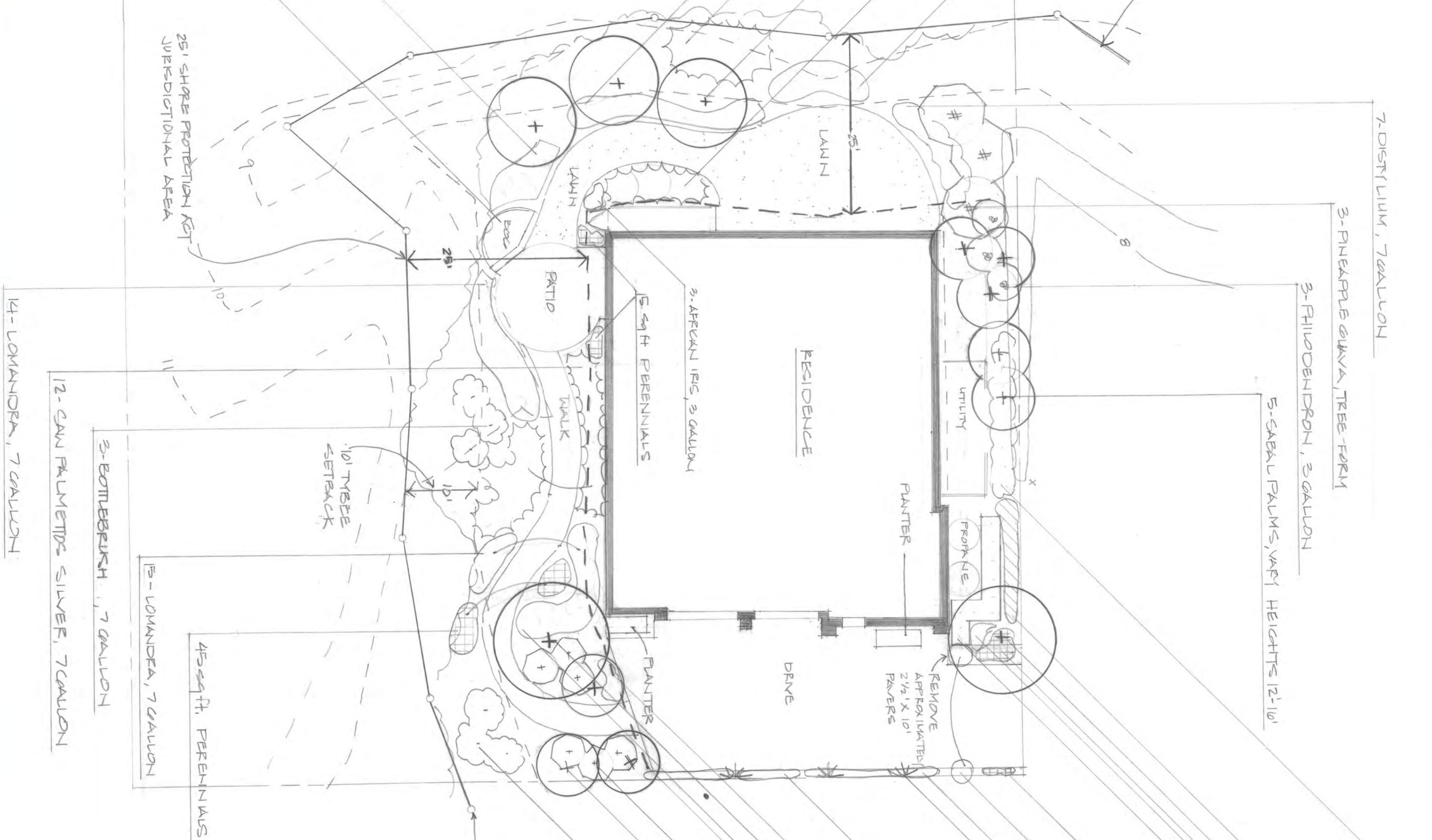
- 21-SEA OXIDE CRIST OF LIKE PERENNIAL, #1
- 3- SAM PALMETTO SILVER, 7 GALLON
- 3- CITRUS TREES 30 GAL OF LARGER
- 9- SAM PALMETTO SILVER, 7 GAL.
- 23- LOMANDRA, 7 GALLON

SITE CALCULATIONS

TOTAL SITE - 19,005 sq. ft.
TOTAL SHORE PROTECTION JURFDICTIONAL AREA - 42,223 sq. ft.
PROPOSED: WITHIN JURFDICTIONAL AREA
HARDSCAPE: WALK, PATIO & BOC - 483.5 sq. ft.
PLANTINGS - 1560 sq. ft.
LAWN - ST. AUGUSTINE PALMETTO - 5210 sq. ft.
TOTAL - 25,085.50 sq. ft.
TOTAL AREA TO REMAIN NATURAL 11,059 sq. ft.

NOTE: PLANTS WILL BE PLANTED 2' FROM THE NORTHERN PROPERTY LINE ADJACENT TO DRAINAGE SWALE.

BOC CALENDAR - RAISED 18" - 24" SEAWALL
BOC DEPTH 12" - 18" - FERT/SALT MIX 3:1
- 10 X 5' (APPROXIMATE AREA)
- BOC LINE
- BOC CODE SYSTEM TO BE SUPPLIED WITH
- CONTINUOUS WATER SUPPLY FROM RUNOFF
- COLLECTED OUT OF SPA AND FRESH WATER
- SOURCE FOR TIVES RUNOFF IS NOT AVAILABLE.
- APPROXIMATELY 15-18' OF PVC FOR WATER SUPPLY



14- LOMANDRA, 7 GALLON

12- SAM PALMETTO SILVER, 7 GALLON

3- BOTTLEBRUSH, 7 GALLON

13- LOMANDRA, 7 GALLON

45 sq. ft. PERENNIALS

10' TREE SETBACK

NOTE: WALK & PATIO - LIMESTONE PAVERS ON COMPACTED GRANITE BASE

TBE OF DUNE AS REVEALED BY GEORGIA DNR - AUGUST 2023

3- BOTTLEBRUSH 7 GALLON

3- SABEL PALMS, VARY HEIGHTS, 12"-16'

4- YAPON HOLLER 'SCHILLINGS', 7 GALLON

25' STRA SETBACK

1- PINO D PALM, 6' CLEAR TRUNK

5- AFRICAN IRIS, 3 GALLON

3- DWARF BANANA 'FOLD', 3 GALLON

3- BLUEERZE, 1 GALLON

(2) DECORATIVE POTS / PINEAPPLE GUAVA, 15 GALLON - STANDARD OR CHIPS UNDER PLANT WITH COLOR & TRAILING PLANTS

10- LOMANDRA, 3 GALLON

3- CAMELEPATE JASMINE, 3 GALLON - TRAIN ON NEIGHBOR'S FENCE

1- PRINCE PALM, 6' CLEAR TRUNK

7- PALM OZIE, 1 GALLON

5- KARALANTHUS, 3 GALLON

10- PODOCARPUS 'VERA' OR 'VAKI' 6' OR TALLER

145- URUPE, 1" O.C.

5- SABEL PALMS, VARY HEIGHTS 12"-16'

3- PHILLODENDRON, 3 GALLON

3- PINEAPPLE GUAVA, TREE FORM

7- DISTYLIUM, 7 GALLON

1" = 10' 0"
 APRIL 2, 2024
 MAY 21, 2024
 JUNE 24, 2024
 1 of 1
 JAN. 13, 2025

811
 Know what's below
 Call before you dig
 The Georgia Department of Transportation
 The property of the
 State of Georgia
 is not to be used
 for any other
 purpose without
 the express
 written consent
 of the
 Department of
 Transportation
 and the
 Georgia
 Department of
 Transportation
 and the
 Georgia
 Department of
 Transportation

LANDSCAPE PLAN
 NORTH

THE LENZ RESIDENCE
 1927A CHATHAM AVENUE
 TREE ISLAND GEORGIA

DANNY NELSON
 LANDSCAPE DESIGNER
 DANNY@NELSONGROUP.US

THE NELSON GROUP
 PO BOX 15193,
 SAVANNAH, GA 31406
 WWW.NELSONGROUP.US

defining spaces since 1992

THE NELSON GROUP
 Design Implement Care