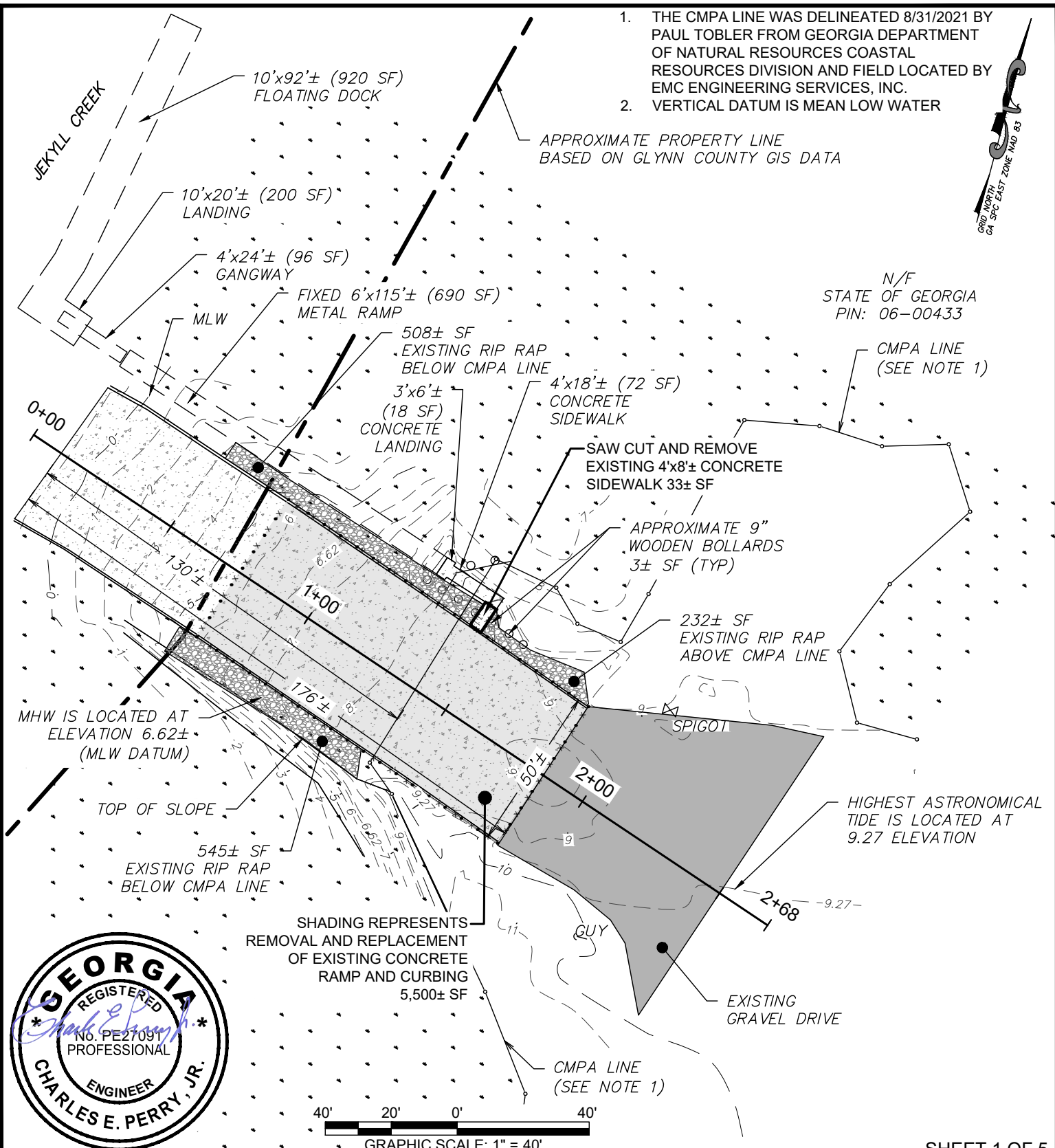


1. THE CMPA LINE WAS DELINEATED 8/31/2021 BY PAUL TOBLER FROM GEORGIA DEPARTMENT OF NATURAL RESOURCES COASTAL RESOURCES DIVISION AND FIELD LOCATED BY EMC ENGINEERING SERVICES, INC.
2. VERTICAL DATUM IS MEAN LOW WATER



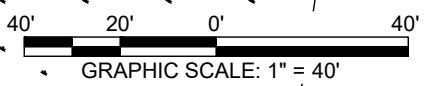
N/F  
STATE OF GEORGIA  
PIN: 06-00433

MHW IS LOCATED AT  
ELEVATION 6.62±  
(MLW DATUM)

HIGHEST ASTRONOMICAL  
TIDE IS LOCATED AT  
9.27 ELEVATION



SHADING REPRESENTS  
REMOVAL AND REPLACEMENT  
OF EXISTING CONCRETE  
RAMP AND CURBING  
5,500± SF



SHEET 1 OF 5

**EMC ENGINEERING SERVICES, INC.**  
27 Chatham Center South,  
Suite A  
Savannah, GA 31405  
Ph: (912) 265-7636  
Fax: (912) 233-4580  
CIVIL MARINE ENVIRONMENTAL  
brunswick@emc-eng.com  
www.emc-eng.com

**ALBANY • ATLANTA • AUGUSTA • BRUNSWICK  
COLUMBUS • SAVANNAH • STATESBORO  
THOMASTON • VALDOSTA • WARNER ROBINS**

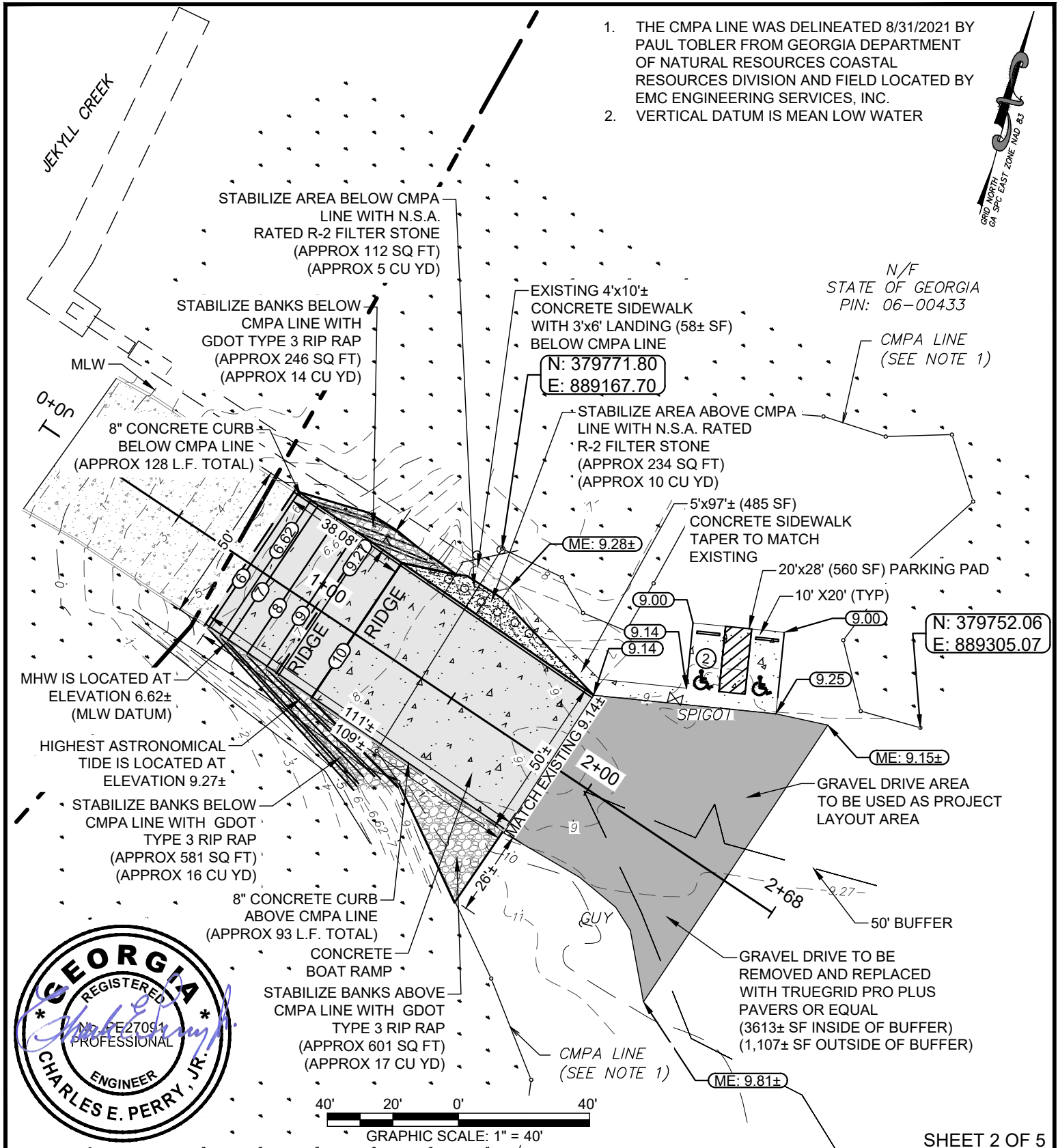
**EXISTING CONDITIONS**

**JEKYLL ISLAND BOAT RAMP**  
25TH G.M. DISTRICT  
JEKYLL ISLAND, GLYNN COUNTY, GEORGIA

Prepared for:  
GEORGIA DEPARTMENT OF NATURAL RESOURCES - COASTAL RESOURCES DIVISION

PROJECT NO:	21-5018
DRAWN BY:	KLC
DESIGNED BY:	KLC
SURVEYED BY:	JH
SURVEY DATE:	9/3/2021
CHECKED BY:	CEP
SCALE:	1" = 40'
DATE:	9/10/2024

1. THE CMPA LINE WAS DELINEATED 8/31/2021 BY PAUL TOBLER FROM GEORGIA DEPARTMENT OF NATURAL RESOURCES DIVISION AND FIELD LOCATED BY EMC ENGINEERING SERVICES, INC.
2. VERTICAL DATUM IS MEAN LOW WATER



N/F  
STATE OF GEORGIA  
PIN: 06-00433

CMPA LINE  
(SEE NOTE 1)

N: 379771.80  
E: 889167.70

N: 379752.06  
E: 889305.07



SHEET 2 OF 5

**EMC ENGINEERING SERVICES, INC.**  
1111 Glyngo Parkway  
Bldg. #2, Suite 400  
Brunswick, GA 31525  
Ph: (912) 265-7636  
Fax: (912) 233-4580  
CIVIL MARINE ENVIRONMENTAL  
brunswick@emc-eng.com  
www.emc-eng.com

ALBANY • ATLANTA • AUGUSTA • BRUNSWICK  
COLUMBUS • SAVANNAH • STATESBORO  
THOMASTON • VALDOSTA • WARNER ROBINS

**PROPOSED IMPROVEMENTS**

**JEKYLL ISLAND BOAT RAMP**  
25TH G.M. DISTRICT  
JEKYLL ISLAND, GLYNN COUNTY, GEORGIA

Prepared for:  
GEORGIA DEPARTMENT OF NATURAL RESOURCES - COASTAL RESOURCES DIVISION

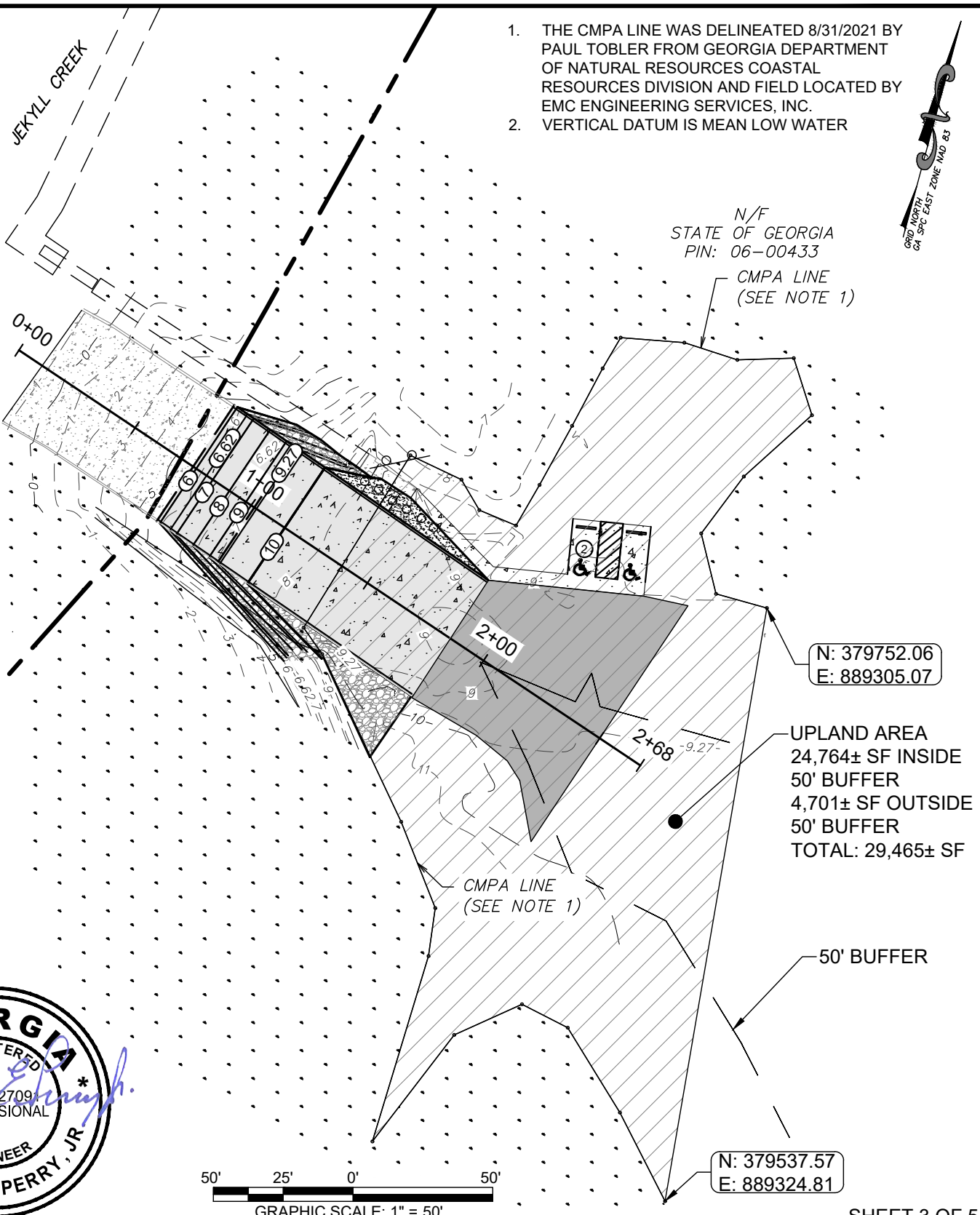
PROJECT NO:	21-5018
DRAWN BY:	KLC
DESIGNED BY:	KLC
SURVEYED BY:	JH
SURVEY DATE:	9/3/2021
CHECKED BY:	CEP
SCALE:	1" = 40'
DATE:	9/10/2024

1. THE CMPA LINE WAS DELINEATED 8/31/2021 BY PAUL TOBLER FROM GEORGIA DEPARTMENT OF NATURAL RESOURCES DIVISION AND FIELD LOCATED BY EMC ENGINEERING SERVICES, INC.
2. VERTICAL DATUM IS MEAN LOW WATER



N/F  
STATE OF GEORGIA  
PIN: 06-00433

CMPA LINE  
(SEE NOTE 1)



N: 379752.06  
E: 889305.07

UPLAND AREA  
24,764± SF INSIDE  
50' BUFFER  
4,701± SF OUTSIDE  
50' BUFFER  
TOTAL: 29,465± SF

50' BUFFER

N: 379537.57  
E: 889324.81



SHEET 3 OF 5

EMC ENGINEERING SERVICES, INC.  
1111 Glynco Parkway  
Bldg. #2, Suite 400  
Brunswick, GA 31525  
Ph: (912) 265-7636  
Fax: (912) 233-4580  
brunswick@emc-eng.com  
www.emc-eng.com

**emc**  
MARINE ENVIRONMENTAL

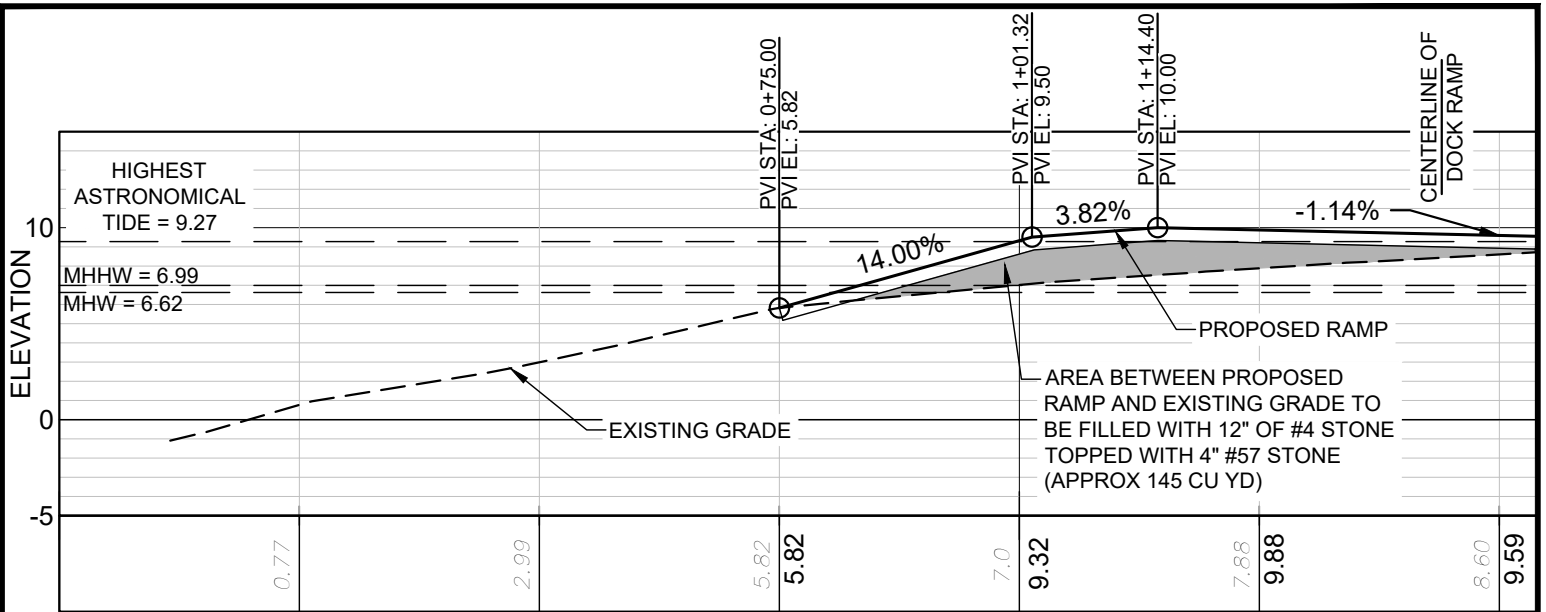
ALBANY • ATLANTA • AUGUSTA • BRUNSWICK  
COLUMBUS • SAVANNAH • STATESBORO  
THOMASTON • VALDOSTA • WARNER ROBINS

**PROPOSED UPLAND COMPONENT EXHIBIT**

**JEKYLL ISLAND BOAT RAMP**  
25TH G.M. DISTRICT  
JEKYLL ISLAND, GLYNN COUNTY, GEORGIA

Prepared for:  
GEORGIA DEPARTMENT OF NATURAL RESOURCES - COASTAL RESOURCES DIVISION

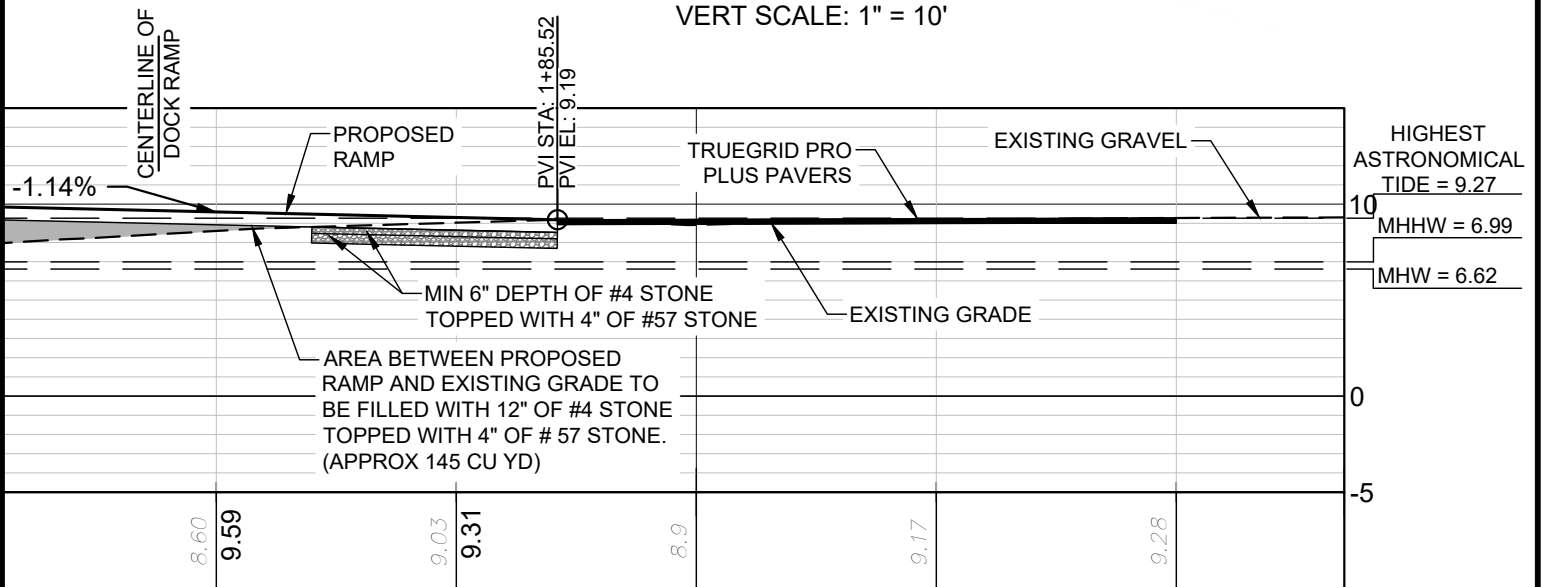
PROJECT NO:	21-5018
DRAWN BY:	KLC
DESIGNED BY:	KLC
SURVEYED BY:	JH
SURVEY DATE:	9/3/2021
CHECKED BY:	CEP
SCALE:	1" = 50'
DATE:	9/10/2024



0+00

1+00

**BOAT RAMP PROFILE**  
HORZ SCALE 1" = 20'  
VERT SCALE: 1" = 10'



2+00

**BOAT RAMP PROFILE**  
HORZ SCALE 1" = 20'  
VERT SCALE: 1" = 10'



SHEET 4 OF 5

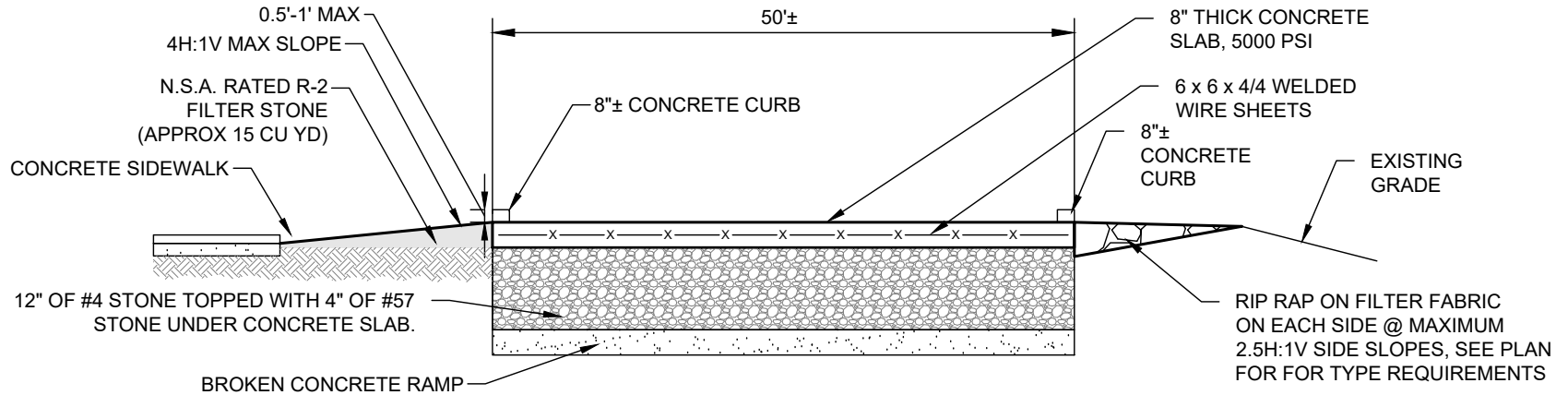
**EMC ENGINEERING SERVICES, INC.**  
1111 Glynco Parkway  
Bldg. #2, Suite 400  
Brunswick, GA 31525  
Ph: (912) 265-7636  
Fax: (912) 233-4580  
CIVIL MARINE ENVIRONMENTAL  
brunswick@emc-eng.com  
www.emc-eng.com

ALBANY • ATLANTA • AUGUSTA • BRUNSWICK  
COLUMBUS • SAVANNAH • STATESBORO  
THOMASTON • VALDOSTA • WARNER ROBINS

**PROPOSED RAMP PROFILE**  
**JEKYLL ISLAND BOAT RAMP**  
25TH G.M. DISTRICT  
JEKYLL ISLAND, GLYNN COUNTY, GEORGIA

Prepared for:  
GEORGIA DEPARTMENT OF NATURAL RESOURCES - COASTAL RESOURCES DIVISION

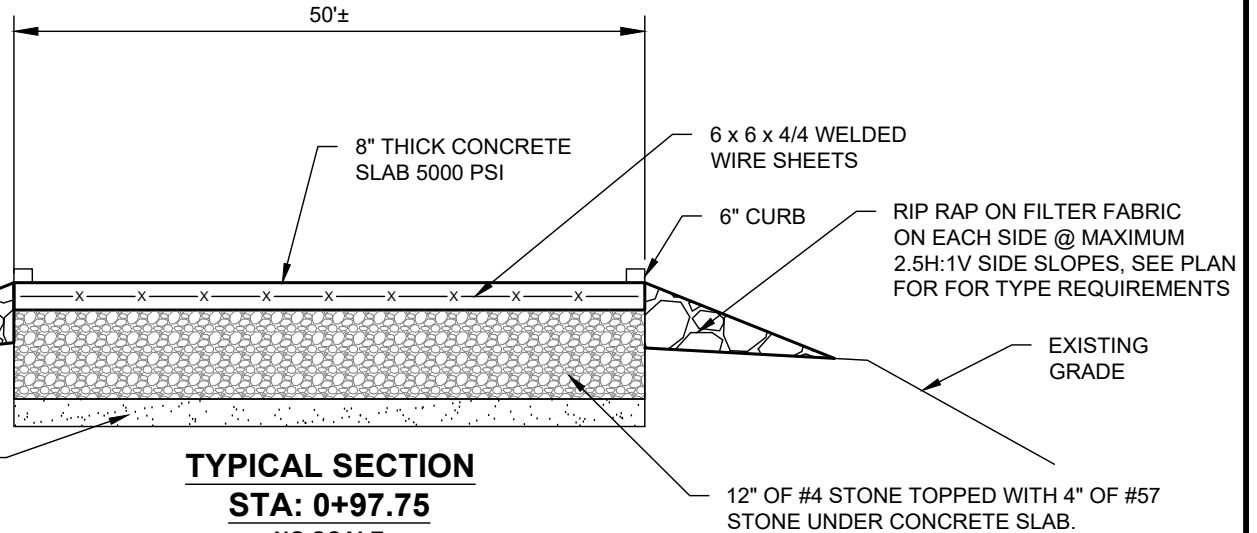
PROJECT NO:	21-5018
DRAWN BY:	KLC
DESIGNED BY:	KLC
SURVEYED BY:	JH
SURVEY DATE:	9/3/2021
CHECKED BY:	CEP
SCALE:	1" = 20'
DATE:	9/10/2024



**TYPICAL SECTION WITH ADJACENT SIDEWALK**

**STA: 1+45.9**

NO SCALE



**TYPICAL SECTION**

**STA: 0+97.75**

NO SCALE



SHEET 5 OF 5

EMC ENGINEERING SERVICES, INC.



1111 Glynco Parkway  
 Bldg. #2, Suite 400  
 Brunswick, GA 31525  
 Ph: (912) 265-7636  
 Fax: (912) 233-4580  
 brunswick@emc-eng.com  
 www.emc-eng.com

**CONSTRUCTION DETAILS**

**JEKYLL ISLAND BOAT RAMP**

25TH G.M. DISTRICT

JEKYLL ISLAND, GLYNN COUNTY, GEORGIA

Prepared for:

GEORGIA DEPARTMENT OF NATURAL RESOURCES - COASTAL RESOURCES DIVISION

PROJECT NO: 21-5018

DRAWN BY: KLC

DESIGNED BY: KLC

SURVEYED BY: JH

SURVEY DATE: 9/3/2021

CHECKED BY: CEP

SCALE: 1" = 7'

DATE: 9/10/2024

ALBANY • ATLANTA • AUGUSTA • BRUNSWICK  
 COLUMBUS • SAVANNAH • STATESBORO  
 THOMASTON • VALDOSTA • WARNER ROBINS