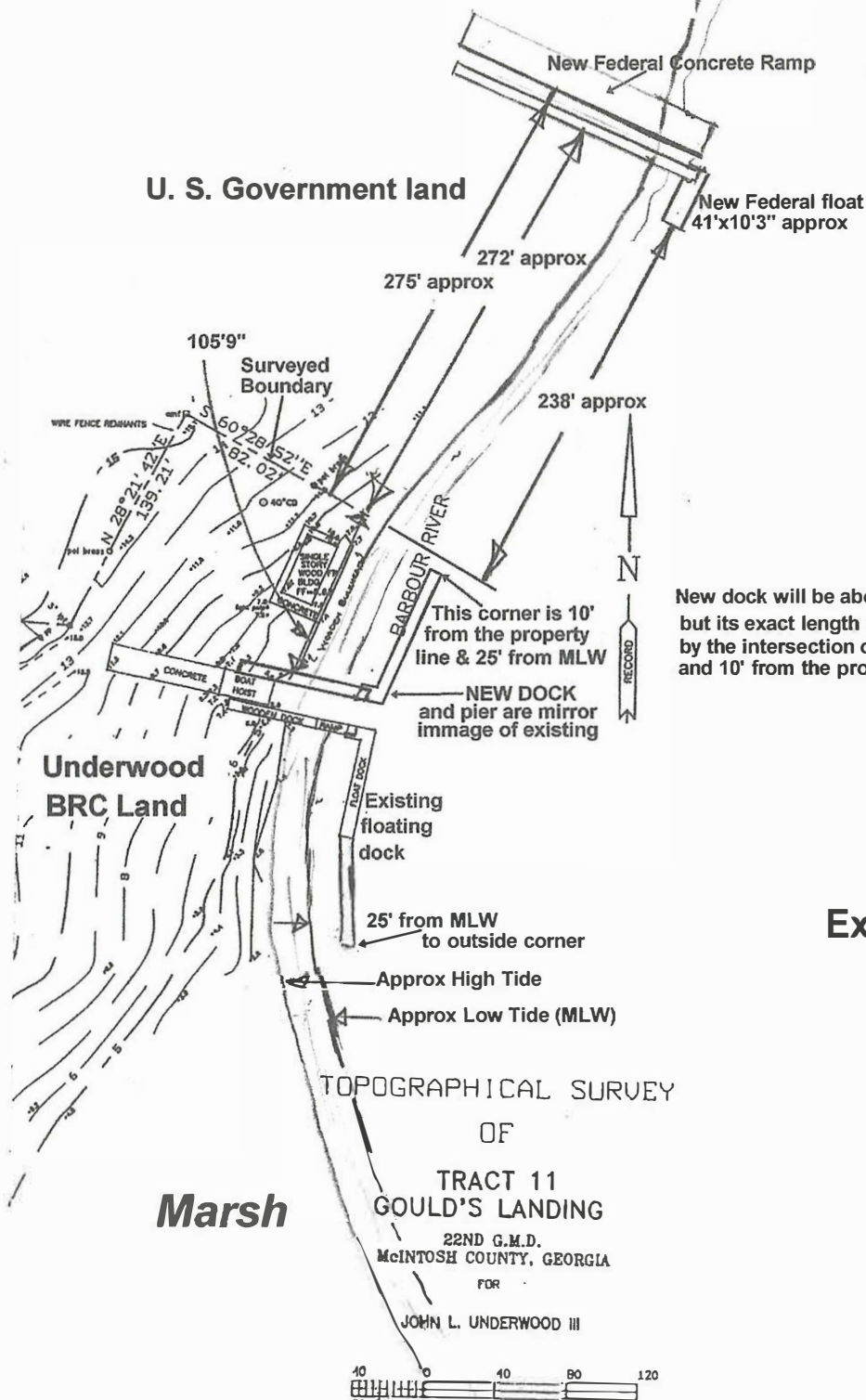


From John Underwood

Compromise sketch of
3-18-04

Shoreline north of
Underwood property
not surveyed



New dock will be about 80' long
but its exact length will be determined
by the intersection of lines 25' from MLW
and 10' from the property line

Existing Dock Facility

Additions to Topo survey drawing only approximately to scale

Please let me know if the committee needs more detail about specific areas as

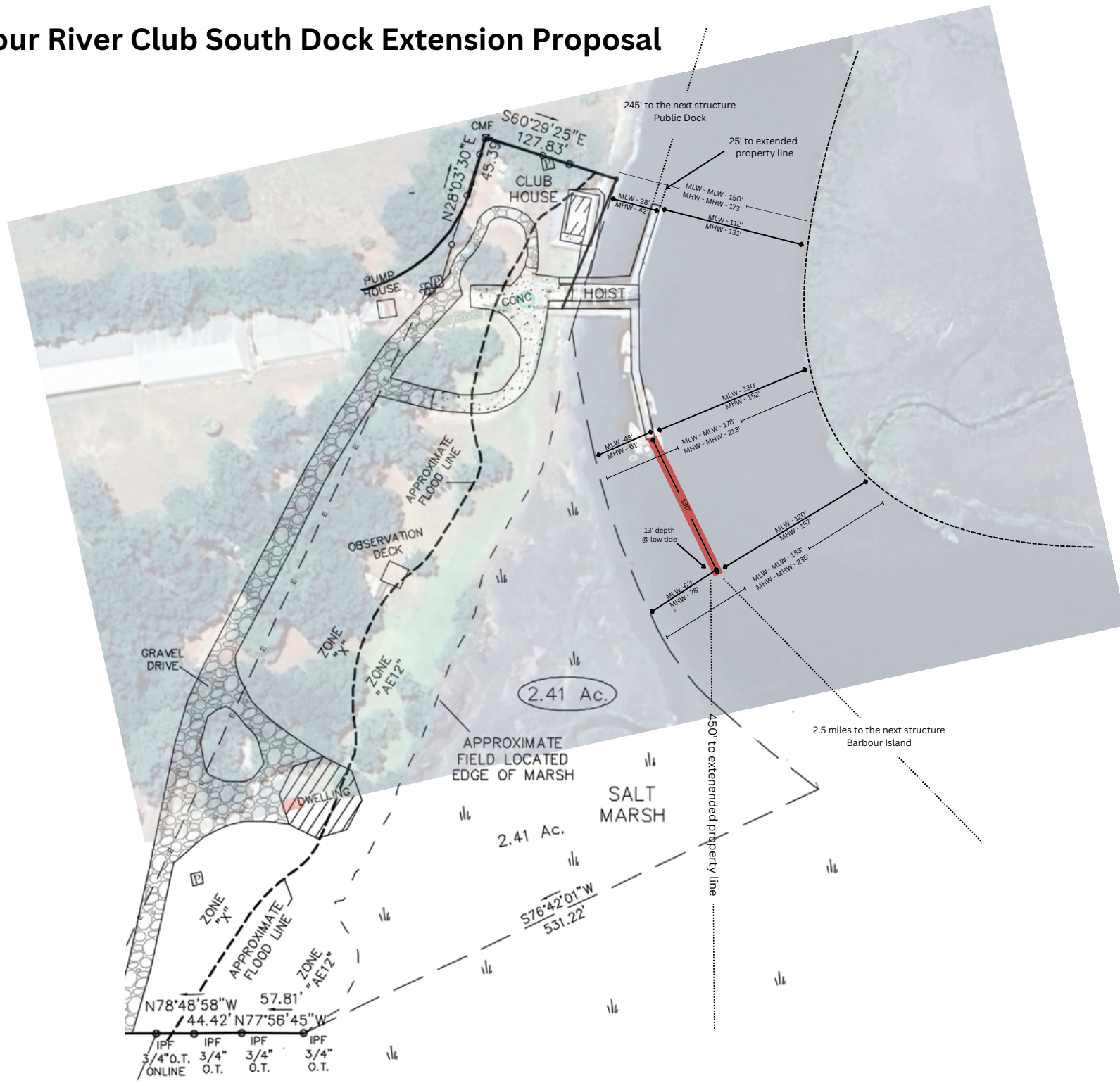
COPIES PROVIDED

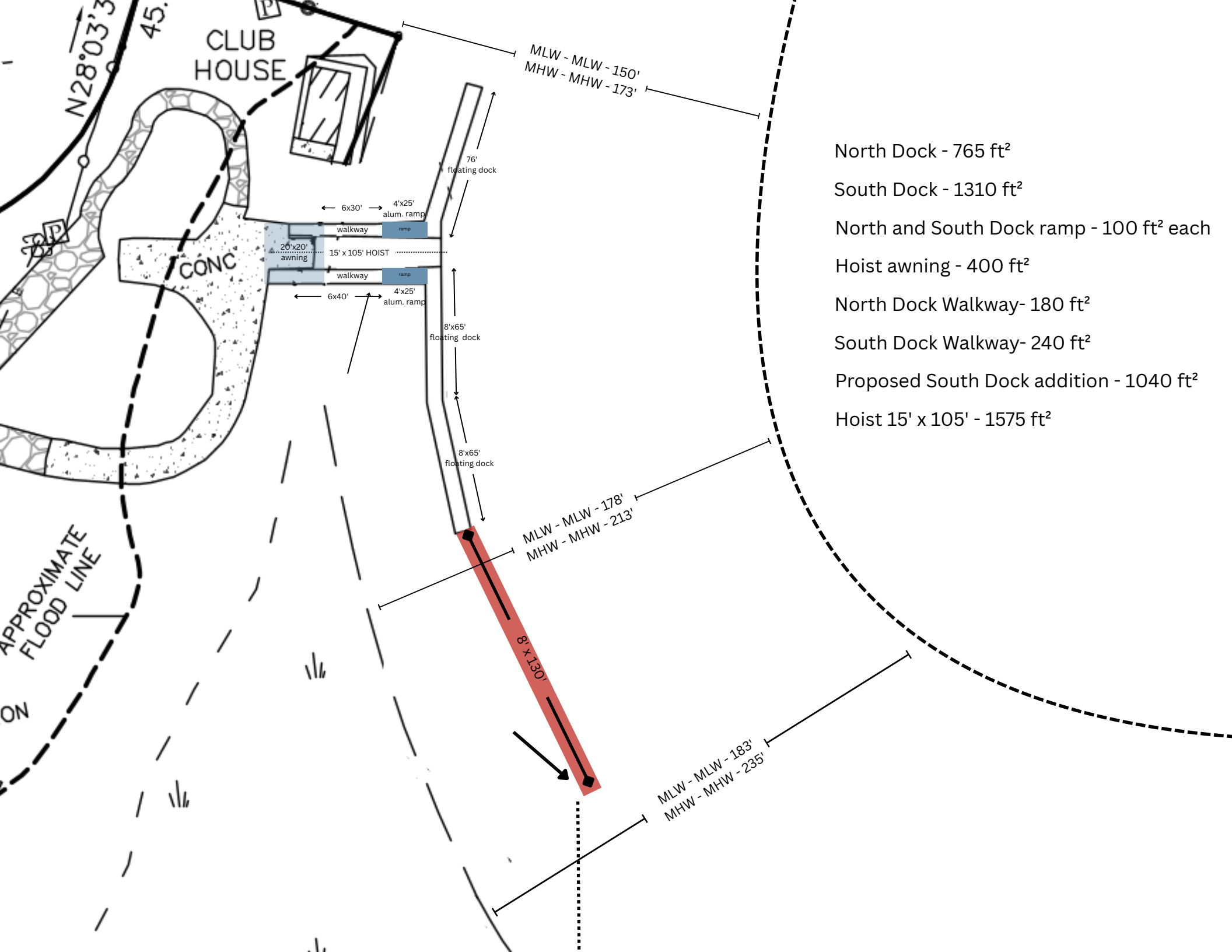
45

DECISION DOCUMENTS

RECEIVED
MAY 02 2005
BY:

Barbour River Club South Dock Extension Proposal





North Dock - 765 ft²

South Dock - 1310 ft²

North and South Dock ramp - 100 ft² each

Hoist awning - 400 ft²

North Dock Walkway- 180 ft²

South Dock Walkway- 240 ft²

Proposed South Dock addition - 1040 ft²

Hoist 15' x 105' - 1575 ft²