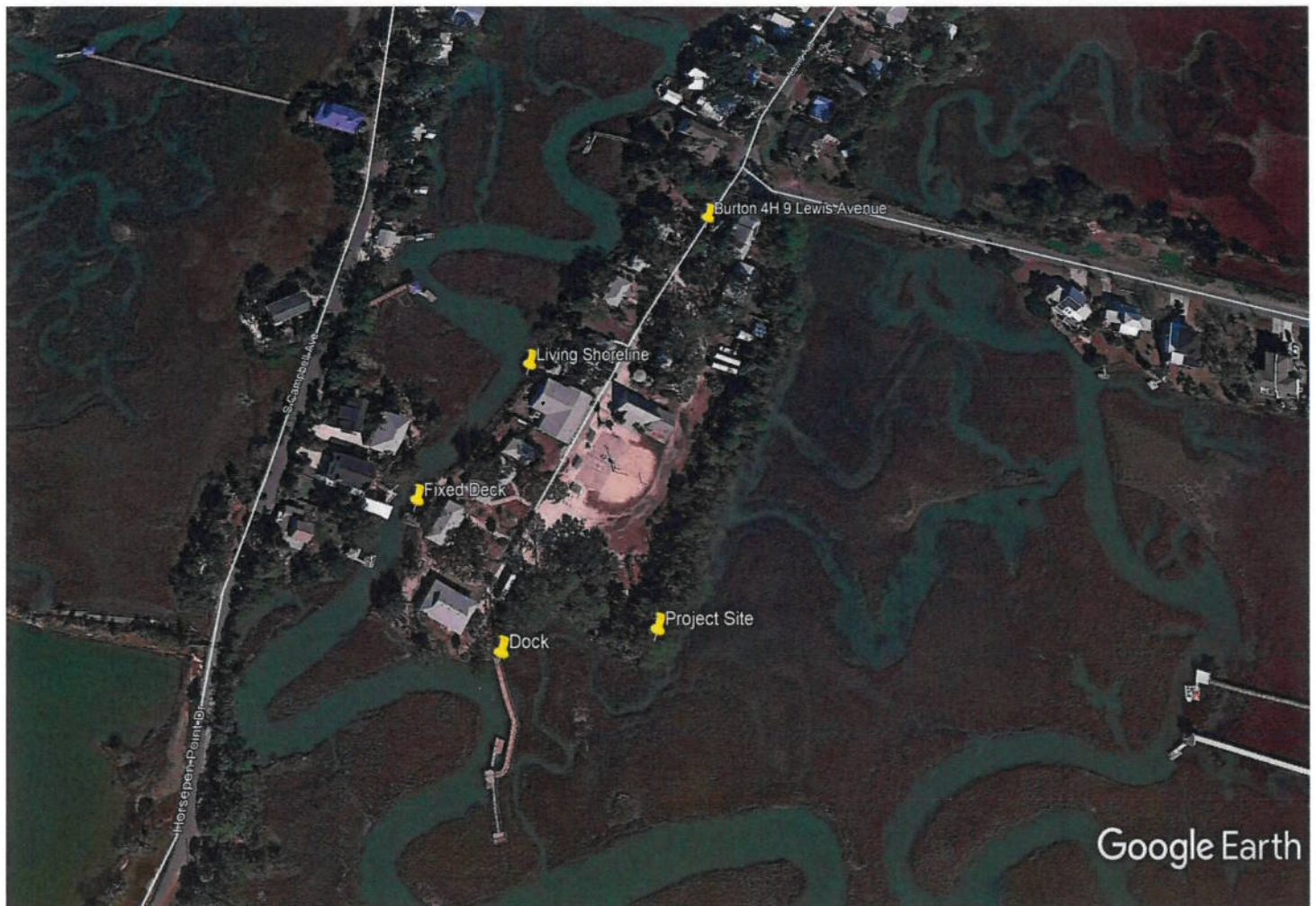


4H Site Photos

Aerial images and site visit January 21, 2021



Aerial overview of Burton 4H Center located on the Horsepen Creek on Tybee Island, Chatham County.

4H Site Photos

Aerial images and site visit January 21, 2021



Aerial overview of Burton 4H Center located on the Horsepen Creek on Tybee Island, Chatham County.

4H Site Photos

Aerial images and site visit January 21, 2021



Living Shoreline Project on Horsepen Creek

4H Site Photos

Aerial images and site visit January 21, 2021



Fixed Deck on Horsepen Creek (off Dining Hall)

4H Site Photos

Aerial images and site visit January 21, 2021



Existing Dock on Horsepen Creek (looking south)

4H Site Photos

Aerial images and site visit January 21, 2021



Existing Dock on Horsepen Creek (looking north)

4H Site Photos

Aerial images and site visit January 21, 2021



Existing Dock on Horsepen Creek (looking south)

4H Site Photos

Aerial images and site visit January 21, 2021



Project Site

4H Site Photos

Aerial images and site visit January 21, 2021



Existing Dock & Project Site



Photo 1: Existing deck (remaining bridge section)



Photo 2: 2011 Living Shoreline

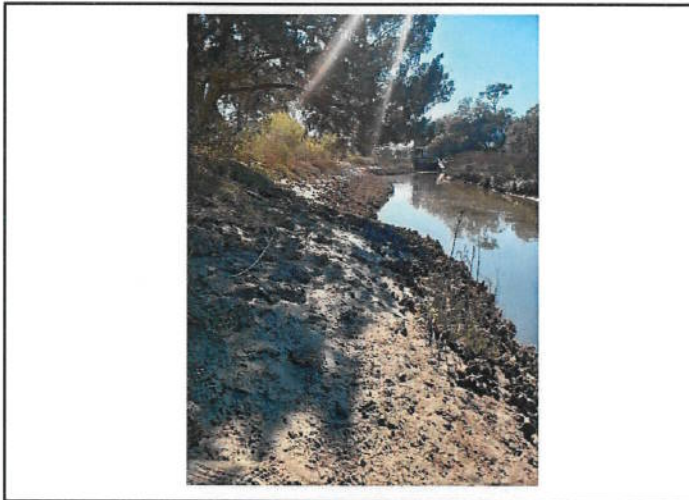


Photo 3: 2013/2014 Living Shoreline facing south



Photo 4: 2013/2014 Living Shoreline facing north



Photo 5: Existing Dock

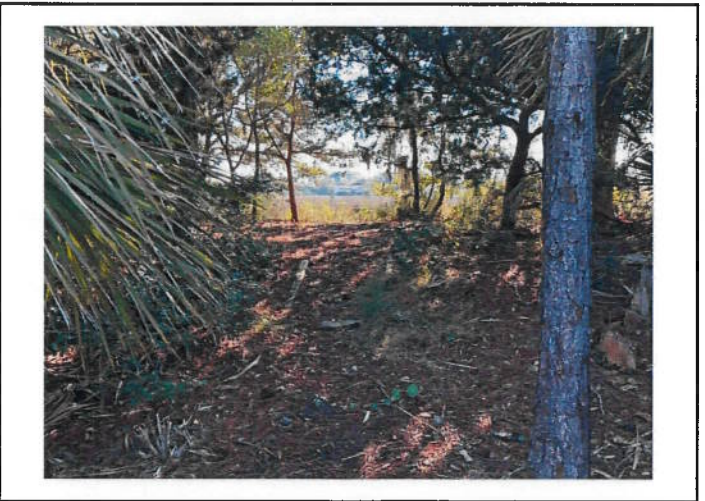


Photo 6: Location of wooden walkway in upland

RLC Project No.:	19-098
Figure No.:	2
Prepared By:	AB
Photo Date:	N/A
Exhibit Date:	3/16/2021

Burton 4-H Center
Chatham County, Georgia

Site Photographs
Prepared For: University of Georgia





Photo 1: Location of the proposed dock.



Photo 2: Existing Dock



Photo 3: Existing walkway



Photo 4: Existing deck and float



Photo 5: Erosion associated with channel migration



Photo 6: Channel migration under walkway

RLC Project No.:	19-098
Figure No.:	5
Prepared By:	AB
Photo Date:	7/8/2019
Exhibit Date:	7/11/2019

Burton 4-H Dock

Chatham County, Georgia

Site Photographs

Prepared For: University of Georgia

RLC

**RESOURCE+LAND
CONSULTANTS**

411 Parkside Drive, Suite 200
Savannah, Georgia 31406
912.413.5676 www.rlcandc.com

RECEIVED
JUL 26 2019

CDNR