

**TREE QUALITY POINTS**  
 REQUIRED: 4.12 ACRES X 1600 TOP/AC = 6,592 TOP  
 PROJECT TREE REQUIREMENTS TO BE PARTIALLY  
 OR FULLY ADDRESSED THROUGH A CASH  
 CONTRIBUTION TO THE TREE FUND.

**LANDSCAPE QUALITY POINTS**  
 REQUIRED: 4.12 ACRES X 400 LOP/AC = 1,648 LOP  
 PROJECT LANDSCAPE REQUIREMENTS TO BE  
 PARTIALLY OR FULLY ADDRESSED THROUGH A  
 CASH CONTRIBUTION TO THE TREE FUND.

**GREENSPACES**  
 TOTAL PROJECT AREA = 4.12 ACRES  
 PROPOSED GREENSPACES = 13,000 S.F.  
 GREENSPACE PERCENTAGE = 13.0 %

**PARKING CRITERIA:**  
 REQUIRED:  
 NO OFF-STREET PARKING IS REQUIRED  
 FOR PROPERTY ZONED B-B.

RECOMMENDED:  
 A PARKING GARAGE IS PROPOSED PROVIDING  
 APPROXIMATELY 500 SPACES.

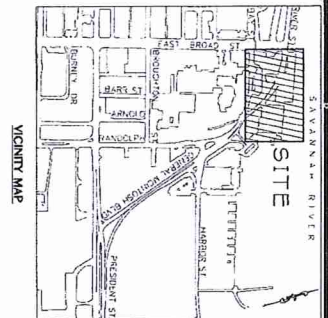
**SITE DATA**  
 PROPOSED ADDRESS: 600 EAST BAY STREET  
 PROPOSED ZONING: B-B  
 BUILDING HEIGHT: 120'  
 TOTAL PARCEL ACREAGE: 4.12 ACRES  
 TOTAL LOT ACREAGE: 1.144 ACRES  
 PIN: 2-0005-02-005

**CONTACT INFORMATION**  
 HERB CONSULTING ENGINEERS  
 329 COMMERCIAL DRIVE  
 SAVANNAH, GEORGIA 31406  
 PHONE: (912) 554-4626  
 FAX: (912) 554-5754

**FLOOD ZONE**  
 THE SITE ARE LOCATED WITHIN THE LIMITS  
 OF THE 100 YEAR FLOOD ZONE, ZONE AE (ELEV. 12.0)(640088)  
 IN ACCORDANCE WITH F.I.R.M. MAP #13051C-0154F  
 REVISED SEPTEMBER 25, 2008

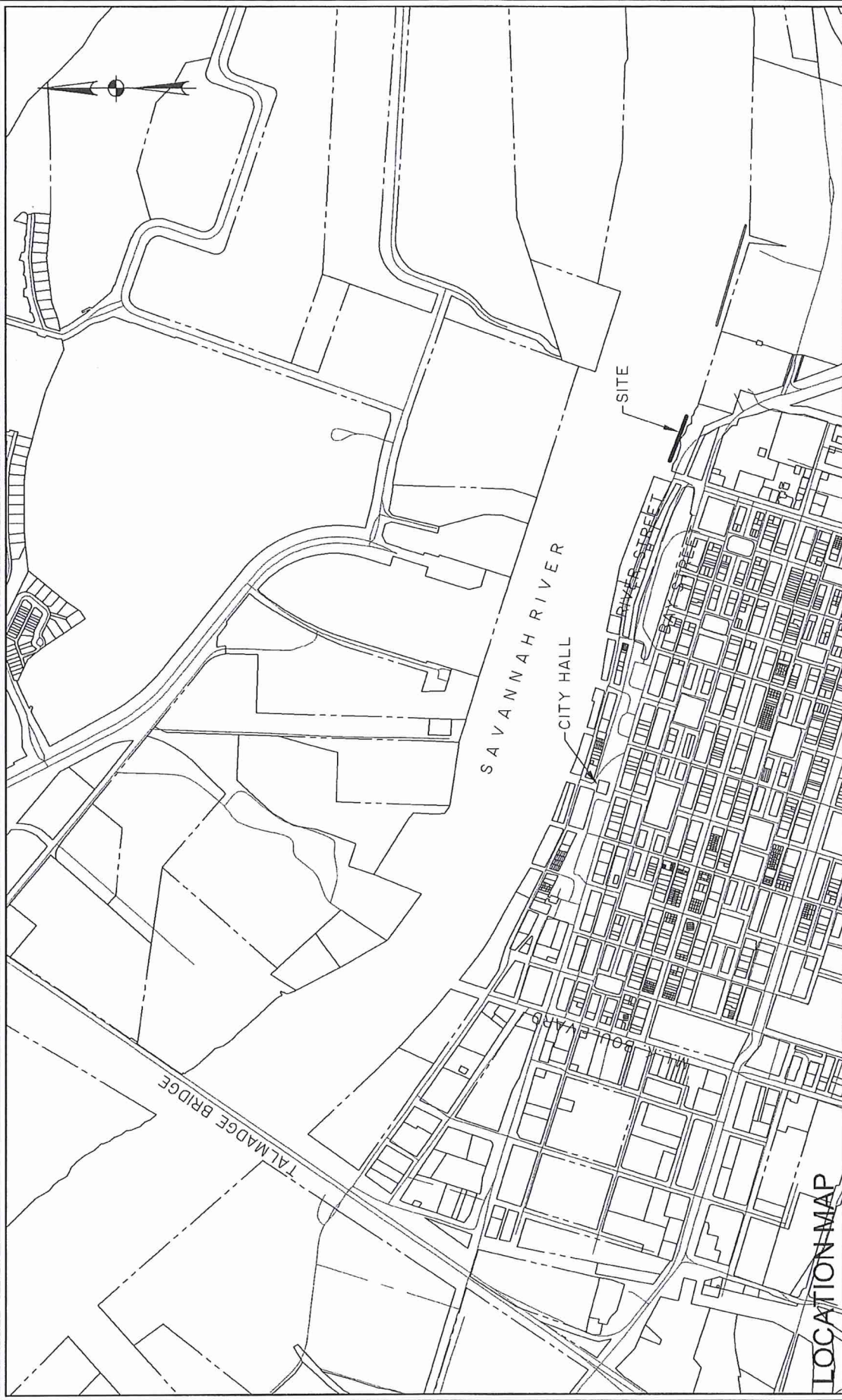
**WATER AND SEWER SERVICES:**  
 PROJECT WILL BE SERVED BY CITY OF  
 SAVANNAH WATER AND SEWER.

**BUILDINGS:**  
 EXISTING OFFICE BUILDING ON SITE IS TO REMAIN.  
 PROPOSED HOTELS: 2 HOTELS, 400 ROOMS (APPROX.)  
 PROPOSED RESTAURANT/RETAIL: 50,000 S.F. (APPROX.)  
 PARKING GARAGE: 500 SPACES (APPROX.)



COLUMBIA PROPERTIES  
 SAVANNAH, LLC  
 2-0005-01-002

<b>C-01</b> DRAWING NUMBER OF 1	<b>EAST RIVER STREET</b> 600 EAST BAY STREET SAVANNAH, GEORGIA FOR <b>NORTHPOINT HOSPITALITY GROUP, INC.</b> <b>GENERAL DEVELOPMENT PLAN</b>	 A Bell Company	<b>HUSSEY, GAY, BELL &amp; DEYOUNG, INC.</b> CONSULTING ENGINEERS POST OFFICE BOX #1247 SAVANNAH, GEORGIA 31416-1247	379 COMMERCIAL DRIVE (D400) TEL: (912) 354-4418 FAX: (912) 354-6764 www.hgb.com	 



**LOCATION MAP**

**EAST RIVER STREET, LLC**

600 EAST BAY  
 SAVANNAH, GEORGIA  
 APPLICANT:  
 NORTH POINT DEVELOPMENT  
 DATE: APRIL 25, 2014  
 COUNTY: CHATHAM

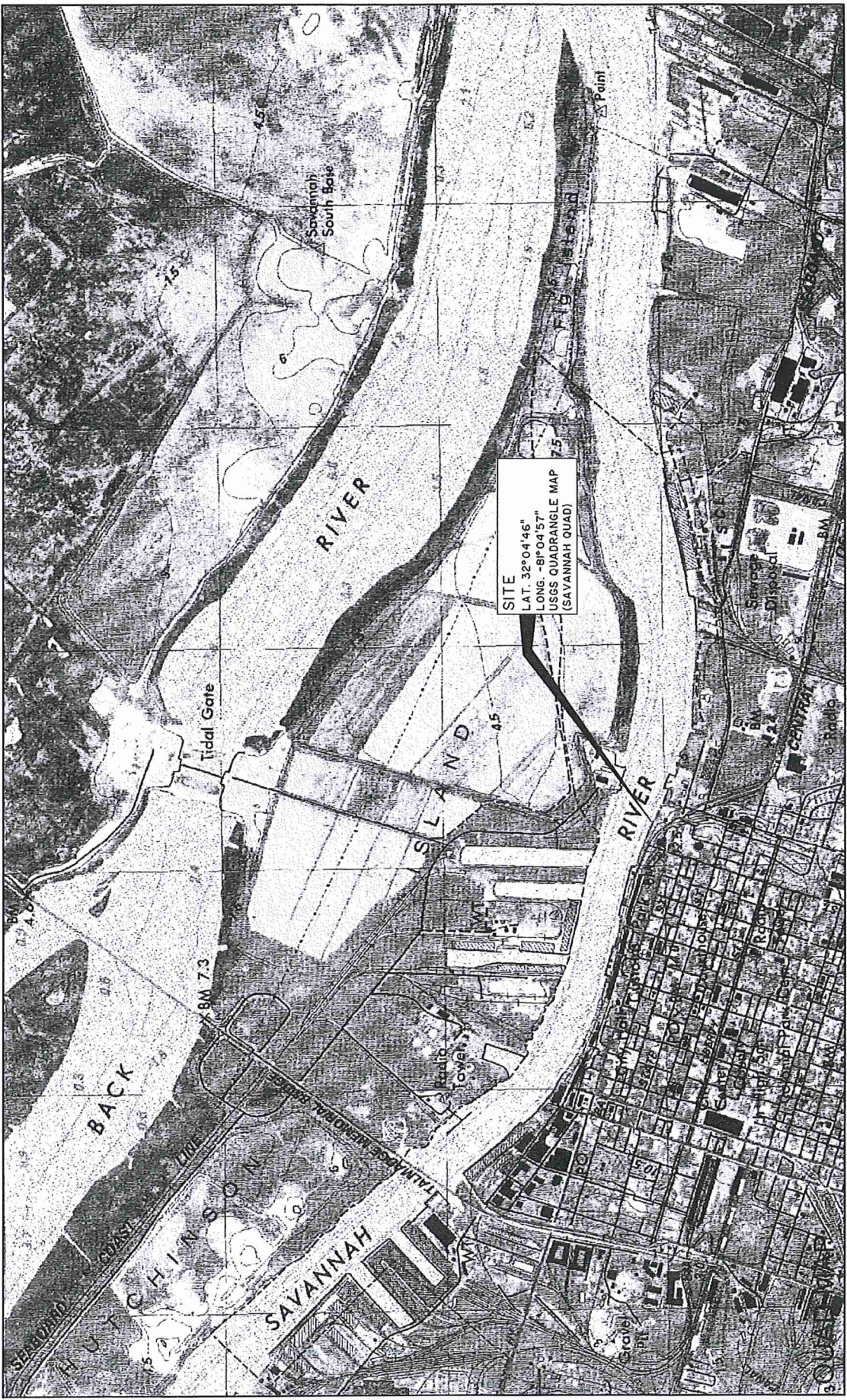
**PROPOSED ACTIVITY:  
 DOCK FACILITY**

DATUM:  
 NAVD 88  
 SHEET: 2 of 9  
 SCALE: 1"=1000'

**THOMAS & HUTTON**  
 Engineering | Surveying | Planning | GIS | Consulting

50 Park of Commerce Way  
 PO Box 2727  
 Savannah, GA 31402-2727  
 p.912.234.5300 f.912.234.2950  
 www.thomasandhutton.com





Z:\24235\24235.000\Engineering\Structural\PERMITS\24235 - mps.dwg - Mar 31, 2014 - 1:52:28 PM

**EAST RIVER STREET, LLC**  
 600 EAST BAY  
 SAVANNAH, GEORGIA  
 APPLICANT:  
 NORTH POINT DEVELOPMENT  
 DATE: APRIL 25, 2014  
 COUNTY: CHATHAM

PROPOSED ACTIVITY:  
 DOCK FACILITY

DATUM:  
 NAVD 88

SHEET: 1 of 9

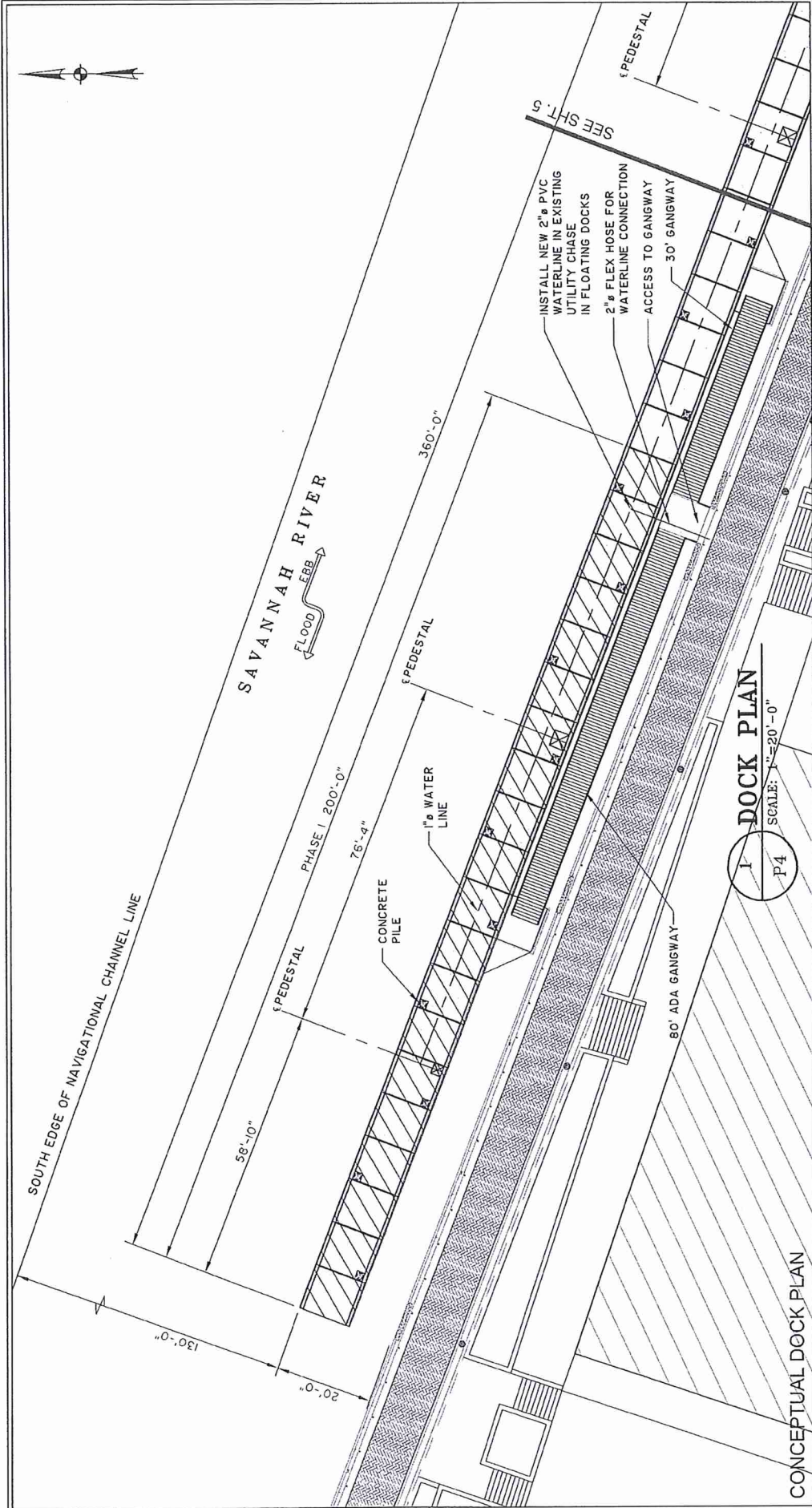
SCALE: 1"=2000'

**THOMAS & HUTTON**  
 Engineering | Surveying | Planning | GIS | Consulting

50 Park of Commerce Way  
 PO Box 2727  
 Savannah, GA 31402-2727  
 p.912.234.5300 f.912.234.2950  
 www.thomasandhutton.com







**THOMAS & HUTTON**  
 Engineering | Surveying | Planning | GIS | Consulting  
 50 Park of Commerce Way  
 PO Box 2727  
 Savannah, GA 31402-2727  
 P. 912.234.5300 F. 912.234.2950  
 www.thomasandhutton.com

PROPOSED ACTIVITY:  
 RIVERWALK/BULKHEAD

DATUM:  
 NAVD 88

SHEET: 4 of 9

SCALE: 1"=20'-0"

**EAST RIVER STREET, LLC**

600 EAST BAY  
 SAVANNAH, GEORGIA

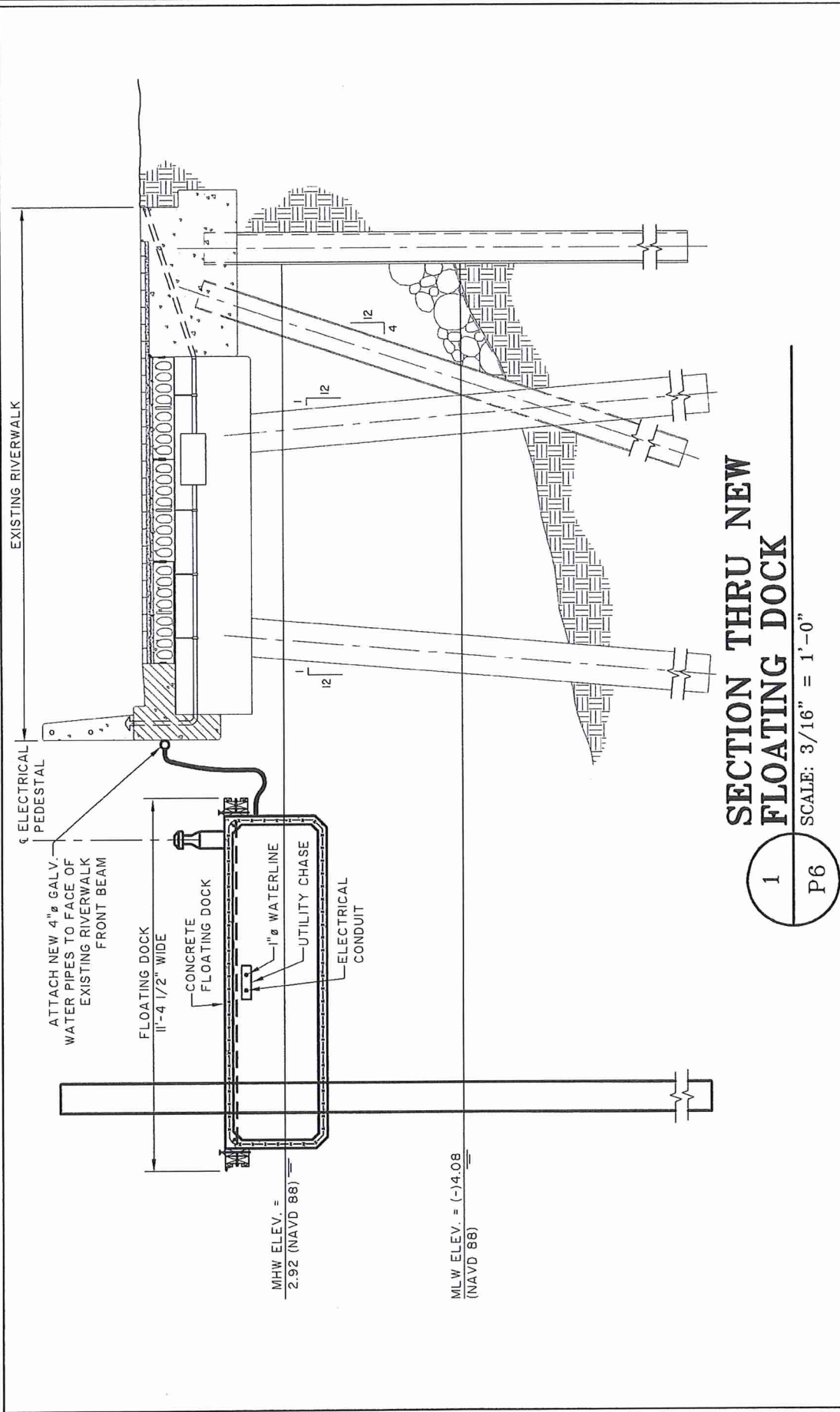
APPLICANT:  
 NORTH POINT DEVELOPMENT

DATE: APRIL 25, 2014

COUNTY: CHATHAM







**SECTION THRU NEW  
FLOATING DOCK**

SCALE: 3/16" = 1'-0"

1  
P6

**EAST RIVER STREET, LLC**

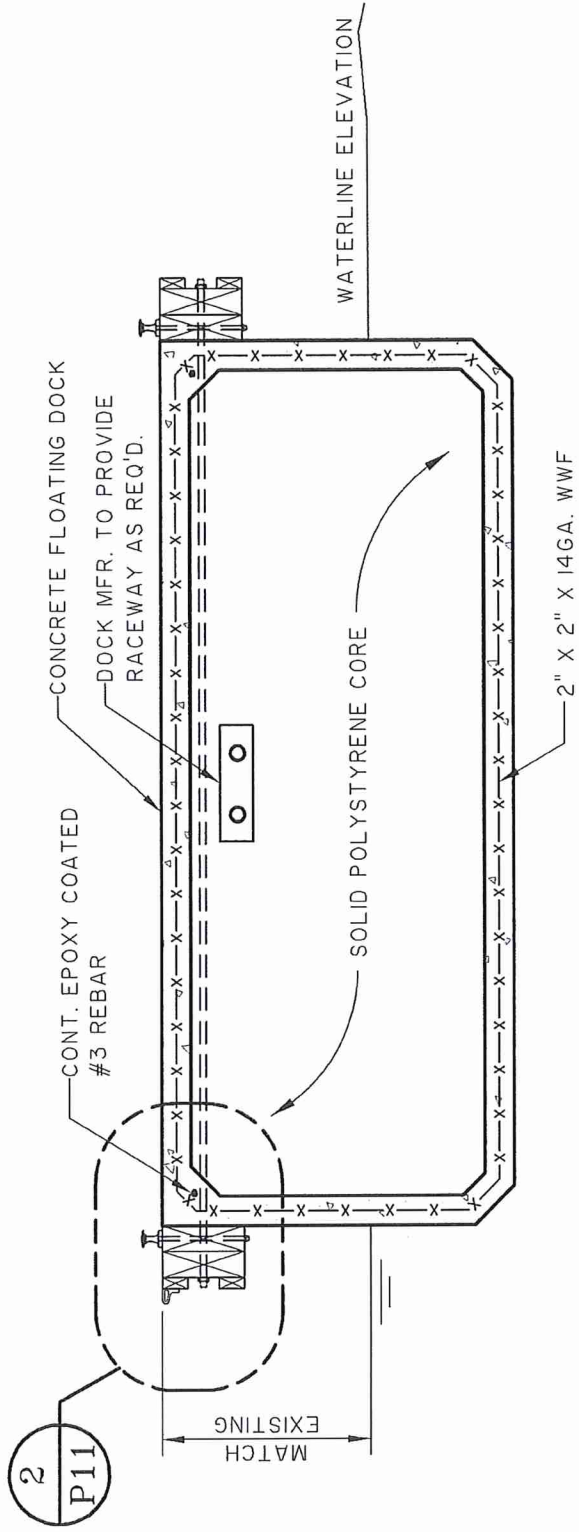
600 EAST BAY  
SAVANNAH, GEORGIA  
APPLICANT:  
NORTH POINT DEVELOPMENT  
DATE: APRIL 25, 2014  
COUNTY: CHATHAM

PROPOSED ACTIVITY:  
DOCK FACILITY

DATUM:  
NAVD 88  
SHEET: 6 of 9  
SCALE: AS SHOWN

**THOMAS & HUTTON**  
Engineering | Surveying | Planning | GIS | Consulting

50 Park of Commerce Way  
PO Box 2727  
Savannah, GA 31402-2727  
p.912.234.5300 f.912.234.2950  
www.thomasandhutton.com



**NEW FLOAT ASSEMBLY SECTION  
(STANDARD CONCRETE DOCK SYSTEM)**

1  
P7

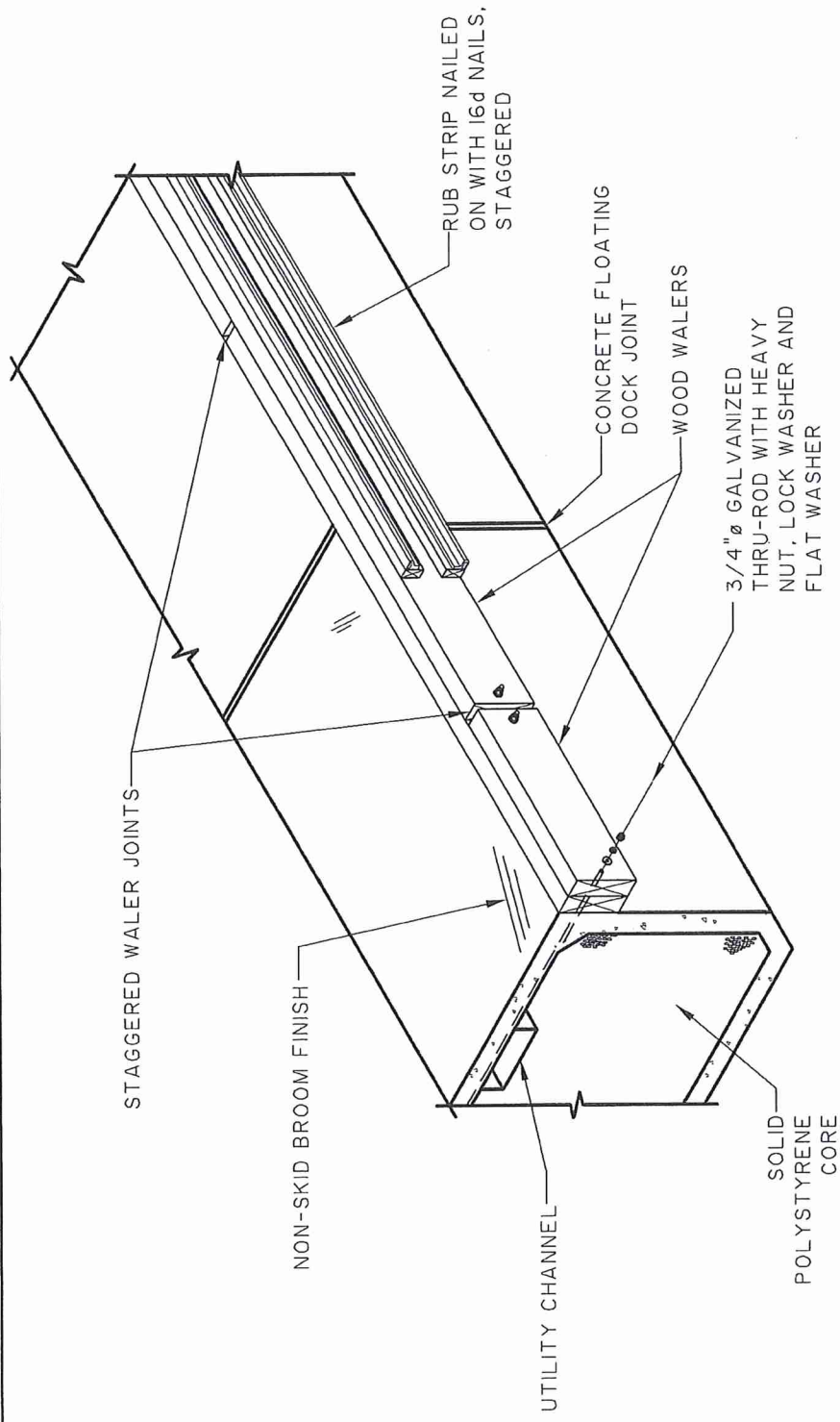
NOT TO SCALE

**EAST RIVER STREET, LLC**  
 600 EAST BAY  
 SAVANNAH, GEORGIA  
 APPLICANT:  
 NORTH POINT DEVELOPMENT  
 DATE: APRIL 25, 2014  
 COUNTY: CHATHAM

PROPOSED ACTIVITY:  
 DOCK FACILITY  
 DATUM:  
 NAVD 88  
 SHEET: 7 of 9  
 SCALE: AS SHOWN

**THOMAS & HUTTON**  
 Engineering | Surveying | Planning | GIS | Consulting  
 50 Park of Commerce Way  
 PO Box 2727  
 Savannah, GA 31402-2727  
 p.912.234.5300 f.912.234.2950  
 www.thomasandhutton.com





1  
P8

**FLOAT ASSEMBLY DETAIL**

NOT TO SCALE

**EAST RIVER STREET, LLC**  
 600 EAST BAY  
 SAVANNAH, GEORGIA  
 APPLICANT:  
 NORTH POINT DEVELOPMENT  
 DATE: APRIL 25, 2014  
 COUNTY: CHATHAM

PROPOSED ACTIVITY:  
 DOCK FACILITY

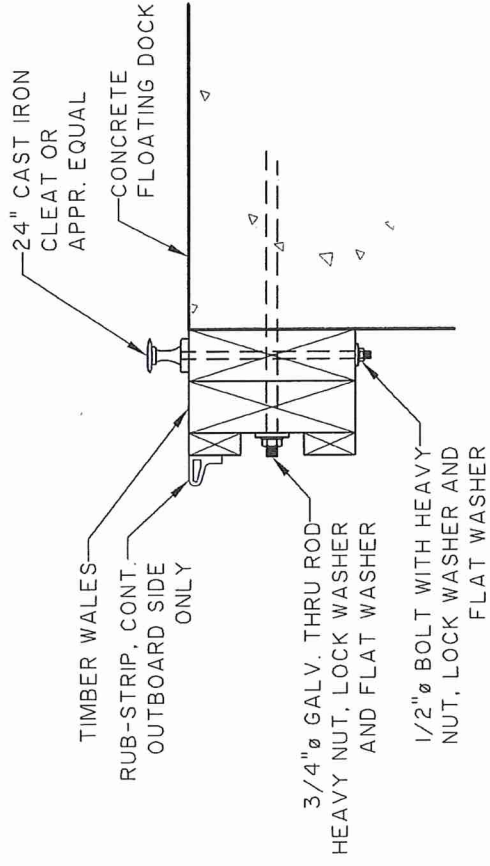
DATUM:  
 NAVD 88

SHEET: 8 of 9

SCALE: AS SHOWN

**THOMAS & HUTTON**  
 Engineering | Surveying | Planning | GIS | Consulting

50 Park of Commerce Way  
 PO Box 2727  
 Savannah, GA 31402-2727  
 p.912.234.5300 f.912.234.2950  
 www.thomasandhutton.com

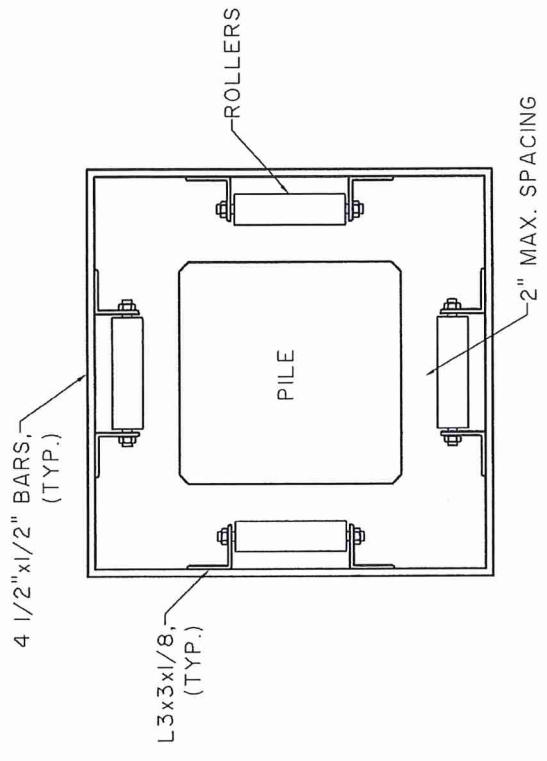


**1 FLOAT ASSEMBLY DETAIL**

NOT TO SCALE

P9

- NOTES:
- CLEATS ARE INSTALLED ON THE INSIDE WALER.
  - CLEATS AT THE END SHALL BE INBOARD OF THE LAST THRU ROD.
  - AVOID LOCATING CLEATS AT FLOAT JOINTS.
  - CLEATS SHALL BE 6" MIN. FROM NEAREST WOOD SPLICE.



**2 PILE ROLLER GUIDE**

NOT TO SCALE

P9

**EAST RIVER STREET, LLC**

600 EAST BAY  
 SAVANNAH, GEORGIA  
 APPLICANT:  
 NORTH POINT DEVELOPMENT  
 DATE: APRIL 25, 2014  
 COUNTY: CHATHAM

**PROPOSED ACTIVITY:  
 DOCK FACILITY**

DATUM:  
 NAVD 88  
 SHEET: 9 of 9  
 SCALE: AS SHOWN

**THOMAS & HUTTON**  
 Engineering | Surveying | Planning | GIS | Consulting

50 Park of Commerce Way  
 PO Box 2727  
 Savannah, GA 31402-2727  
 p.912.234.5300 f.912.234.2950  
 www.thomasandhutton.com