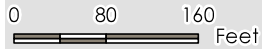


Figure 1 - Aerial Map



Directions from Brunswick, GA:
 Take F J Torras Casueway onto
 St. Simons Island. Continue onto
 Kings Way. Turn right onto Fairway
 Dr. Turn right onto Georgia St.

Source: Esri, DigitalGlobe, GeoEye, Earthstar Geographics, CNES/Airbus
 DS, USDA, USGS, AeroGRID, IGN, and the GIS User Community



**GEORGIA WATER &
 ENVIRONMENTAL SERVICES**
 1510 Newcastle Street, Suite 204, Brunswick, GA 31520
 Phone: (478) 235-0307

Project Location: Glynn County, Georgia
 GWES Project: 065.02.3.18
 Prepared by CN on 12-11-2018
 Technical Review by BM on 12-15-2018

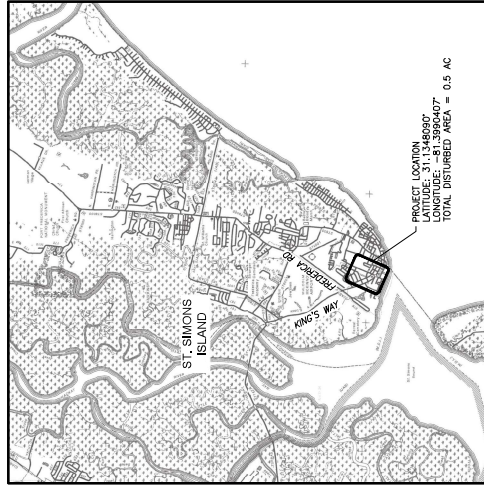
Client/Project: Glynn County Board of Commissioners

Figure No. 1
 Title: **Aerial Map**

VILLAGE DRAINAGE IMPROVEMENTS PHASE I

FOR GLYNN COUNTY BOARD OF COMMISSIONERS

Glynn County, GA
24 Hr. Contact: Ben Pierce, PE, Roads and Drainage Division Manager
Tel.: (912) 554-7744

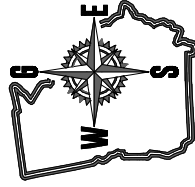


VICINITY MAP
SCALE: N.T.S.



Glynn County
GEORGIA

DRAWING INDEX	
COVER SHEET	GENERAL CONSTRUCTION NOTES, LEGEND, AND ABBREVIATIONS
C-1	DEMOLITION PLAN - GEORGIA STREET OUTFALL
C-2	REPLACEMENT PLAN - GEORGIA STREET OUTFALL
C-3	STORM DRAINAGE PLAN - GEORGIA STREET OUTFALL
C-4	STORM DRAINAGE PROFILE - "SS1"
C-5	STORM DRAINAGE PROFILE - "GS1"
C-6	STORM DRAINAGE PROFILE - SANITARY SEWER PROFILES LINE "A" AND LINE "B"
C-8 - C-12	MISCELLANEOUS DETAILS
EC-1	EROSION, SEDIMENTATION, AND POLLUTION CONTROL NOTES, LEGEND, AND SCHEDULE
EC-2	EROSION, SEDIMENTATION, AND POLLUTION CONTROL DETAILS



**GEORGIA WATER &
ENVIRONMENTAL
SERVICES, LLC**

B R U N S W I C K • M A C O N • P E R R Y
1100 Newstate St. Ste. 204, Brunswick, Georgia 31520
4875 Riverside Drive, Ste. 101, Macon, Georgia 31210
Phone: (478) 265-6807
www.gwesllc.com

GWES Project Number: 065.02.3.18

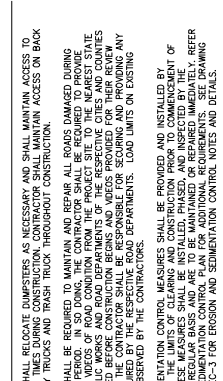


GENERAL CONSTRUCTION NOTES:

- THE CONTRACTOR SHALL COORDINATE ALL CONSTRUCTION WITH GLYNN COUNTY PUBLIC WORKS (COUNTY).
- ALL CONSTRUCTION SHALL CONFORM TO THE PLANS, SPECIFICATIONS, AND COUNTY STANDARDS. IN THE EVENT OF CONFLICT, THE STRONGEST OF THE STANDARDS SHALL APPLY.
- ANY REFERENCE TO CONTRACTOR SHALL BE ASSUMED TO ALSO APPLY TO ANY AND ALL OF THE CONTRACTOR'S SUBCONTRACTORS, SUPPLIERS, AND SUBSIDIARIES.
- THE TOPOGRAPHIC SURVEY WAS PREPARED BY SHIPLE SURVEYING COMPANY, P.C. DATED 1/16/2018.
- THE 15' GROUND ELEVATION UTILITIES AS SHOWN ON THESE PLANS HAVE BEEN RETRIEVED FROM THE BEST AVAILABLE INFORMATION AND ARE GIVEN FOR THE CONVENIENCE OF THE CONTRACTOR. NEITHER SHIPLE SURVEYING COMPANY, P.C. NOR GLYNN COUNTY ASSUME ANY LIABILITY FOR THE ACCURACY OF THE INFORMATION PROVIDED HEREON. THE CONTRACTOR SHALL VERIFY THE EXISTENCE, EXACT LOCATION, MATERIAL AND SIZE OF ANY UNDERGROUND UTILITY BEFORE BIDDING OR EXCAVATING ON THIS PROJECT.
- UNDERGROUND UTILITIES SHOWN WERE MARKED BY UTILITY OWNERS AS PART OF 811 DESIGN AND LOCATE. (NOTE:)
- IT SHALL BE THE CONTRACTOR'S RESPONSIBILITY TO CONTACT ALL UTILITY COMPANIES AND OBTAIN THE NECESSARY PERMITS AND APPROVALS FOR ALL UTILITIES AND FACILITIES LOCATED IN THE FIELD. LOCAL UTILITIES AND CORRESPONDING TELEPHONE NUMBERS ARE LISTED BELOW. THIS LIST IS PROVIDED AS A CONVEYANCE TO THE CONTRACTOR AND SHOULD NOT BE ASSUMED TO BE COMPLETE.

UTILITIES PROTECTION CENTER	811	351-7138
WATER & SEWER COMMISSION	(912)	506-4289
GEORGIA POWER COMPANY	(404)	584-4338
AT&T	(770)	554-3872
SOUTHERN GAS COMPANY	(770)	554-3872
COMCAST	(770)	554-6879
- NO CONTRACTOR SHALL VERIFY ALL EXISTING UTILITY CONDITIONS AND FIELD CONDITIONS. IF A DISCREPANCY EXISTS WITH THE UTILITY LOCATIONS, THE CONTRACTOR SHALL CONTACT COUNTY BEFORE ORDERING ANY POTENTIALLY AFFECTED MATERIALS OR BEGINNING CONSTRUCTION.
- THE CONTRACTOR SHALL RETAIN A GEORGIA LICENSED SURVEYOR TO PROVIDE THE HORIZONTAL AND VERTICAL CONTROL POINTS AND TO VERIFY THE HORIZONTAL AND VERTICAL SEPARATION BETWEEN FIELD MEASUREMENTS AND CONSTRUCTION PLAN INFORMATION SHALL BE BROUGHT TO THE ATTENTION OF COUNTY IMMEDIATELY.
- ANY REFERENCE POINTS, RIGHT-OF-WAY MONUMENTS, PROPERTY CORNERS, BENCHMARKS OR ADJACENT PROPERTY CORNERS SHALL BE PROTECTED AND MAINTAINED THROUGHOUT CONSTRUCTION. ANY ASSOCIATED COSTS SHALL BE THE RESPONSIBILITY OF THE CONTRACTOR. OTHERWISE ALL LANDSCAPES, STREET SIGNS, AND OTHER FEATURES SHALL BE PROTECTED AND MAINTAINED THROUGHOUT CONSTRUCTION. CONSTRUCTION OPERATIONS SHALL BE RESTORED TO THEIR ORIGINAL CONDITION.
- MINIMUM DEPTH OF COVER ON STORM DRAINAGE PIPING SHALL BE 12" COVER DEPTH LESS THAN 12" MUST BE APPROVED IN ADVANCE, IN WRITING BY THE ENGINEER AND COUNTY. ADDITIONAL PROTECTION MAY BE REQUIRED FOR APPROVAL.
- THE MINIMUM HORIZONTAL AND VERTICAL SEPARATION BETWEEN WATER LINES, SEWER LINES, AND STORM DRAINS SHALL CONFORM TO COUNTY REQUIREMENTS.
- THE CONTRACTOR SHALL NOTIFY COUNTY'S INSPECTORS AT LEAST 48 HOURS PRIOR TO COMMENCING CONSTRUCTION.
- THE CONTRACTOR SHALL BE RESPONSIBLE FOR ARRANGING AND SECURING ANY NECESSARY PERMITS AND APPROVALS FOR ALL CONSTRUCTION MATERIALS AND EQUIPMENT. THE SECURITY OF EQUIPMENT AND MATERIAL SHALL BE THE RESPONSIBILITY OF THE CONTRACTOR.
- CONSTRUCTION AND STORAGE AREAS SHALL BE KEPT NEAT AND CLEAN AT ALL TIMES.
- SHIP DRAWINGS AND CERTIFICATIONS FOR ALL CONSTRUCTION MATERIALS ARE REQUIRED. THE CONTRACTOR SHALL SUBMIT SHIP DRAWINGS AND PRODUCT LITERATURE TO THE ENGINEER FOR REVIEW PRIOR TO ORDERING THE MATERIALS REQUIRED FOR CONSTRUCTION.
- ALL NON-FLANGED FITTINGS AND VALVES SHALL UTILIZE RESTRAINED JOINTS. THIS REQUIREMENT SHALL ALSO INCLUDE THE USE OF RESTRAINED JOINTS ALONG ADJACENT JOINTS OF PIPE IN ACCORDANCE WITH COUNTY STANDARD DETAILS.
- THE CLEARING AND CONSTRUCTION LIMITS ARE SHOWN ON THE PLANS. THE CONTRACTOR SHALL PROTECT ALL EXISTING TREES AND OTHER LANDSCAPE FEATURES. THE CONTRACTOR SHALL BE RESPONSIBLE FOR ARRANGING AND SECURING ANY NECESSARY PERMITS AND APPROVALS FOR ALL CONSTRUCTION MATERIALS AND EQUIPMENT. THE SECURITY OF EQUIPMENT AND MATERIAL SHALL BE THE RESPONSIBILITY OF THE CONTRACTOR.
- CONTRACTOR SHALL SUBMIT SHIP DRAWINGS AND PRODUCT LITERATURE TO THE ENGINEER FOR REVIEW PRIOR TO ORDERING THE MATERIALS REQUIRED FOR CONSTRUCTION.
- ALL NON-FLANGED FITTINGS AND VALVES SHALL UTILIZE RESTRAINED JOINTS. THIS REQUIREMENT SHALL ALSO INCLUDE THE USE OF RESTRAINED JOINTS ALONG ADJACENT JOINTS OF PIPE IN ACCORDANCE WITH COUNTY STANDARD DETAILS.
- ALL EXCAVATED TRENCHES SHALL BE COMPLETELY FILLED OR COVERED WITH PLATES AT THE END OF EACH WORK DAY. THIS SHALL BE A MANDATORY REQUIREMENT.
- COMMERCIAL PROPERTIES AT ALL TIMES DURING CONSTRUCTION.

TYPICAL LEGEND



ABBREVIATION LEGEND

AC.	ACRES(S)
C&G	- CURB AND GUTTER
O	- CURB INLET
CMH	- CURB INLET MANHOLE
CONC.	- CONCRETE
CRP	- CORRUGATED METAL PIPE
CP	- CONTROL POINT
ELEV.	- ELEVATION
EXIST.	- EXISTING
ESOP	- EROSION, SEDIMENTATION, AND POLLUTION CONTROL PLAN
GLD.1.	- GEORGIA DEPARTMENT OF TRANSPORTATION
HOPE	- HIGH-DENSITY POLYETHYLENE
INV.	- INVERT
LF.	- LINEAR FEET
O.C.E.W.	- OFF CENTER EACH WAY
PVC	- POLYVINYL CHLORIDE
RECP	- REINFORCED CONCRETE ELLIPTICAL PIPE
RCP	- REINFORCED CONCRETE PIPE
S.F.	- SQUARE FEET
S.S.	- STAINLESS STEEL
SMWH	- STORM DRAIN MANHOLE
SMWH	- SANITARY SEWER MANHOLE
STD.	- STANDARD
S.Y.	- SQUARE YARDS
STA.	- STATION
TYP.	- TYPICAL
V.F.	- VERTICAL FEET

GENERAL CONSTRUCTION NOTES:

- THE CONTRACTOR SHALL COORDINATE ALL CONSTRUCTION WITH GLYNN COUNTY PUBLIC WORKS (COUNTY).
- ALL CONSTRUCTION SHALL CONFORM TO THE PLANS, SPECIFICATIONS, AND COUNTY STANDARDS. IN THE EVENT OF CONFLICT, THE STRONGEST OF THE STANDARDS SHALL APPLY.
- ANY REFERENCE TO CONTRACTOR SHALL BE ASSUMED TO ALSO APPLY TO ANY AND ALL OF THE CONTRACTOR'S SUBCONTRACTORS, SUPPLIERS, AND SUBSIDIARIES.
- THE TOPOGRAPHIC SURVEY WAS PREPARED BY SHIPLE SURVEYING COMPANY, P.C. DATED 1/16/2018.
- THE 15' GROUND ELEVATION UTILITIES AS SHOWN ON THESE PLANS HAVE BEEN RETRIEVED FROM THE BEST AVAILABLE INFORMATION AND ARE GIVEN FOR THE CONVENIENCE OF THE CONTRACTOR. NEITHER SHIPLE SURVEYING COMPANY, P.C. NOR GLYNN COUNTY ASSUME ANY LIABILITY FOR THE ACCURACY OF THE INFORMATION PROVIDED HEREON. THE CONTRACTOR SHALL VERIFY THE EXISTENCE, EXACT LOCATION, MATERIAL AND SIZE OF ANY UNDERGROUND UTILITY BEFORE BIDDING OR EXCAVATING ON THIS PROJECT.
- UNDERGROUND UTILITIES SHOWN WERE MARKED BY UTILITY OWNERS AS PART OF 811 DESIGN AND LOCATE. (NOTE:)
- IT SHALL BE THE CONTRACTOR'S RESPONSIBILITY TO CONTACT ALL UTILITY COMPANIES AND OBTAIN THE NECESSARY PERMITS AND APPROVALS FOR ALL UTILITIES AND FACILITIES LOCATED IN THE FIELD. LOCAL UTILITIES AND CORRESPONDING TELEPHONE NUMBERS ARE LISTED BELOW. THIS LIST IS PROVIDED AS A CONVEYANCE TO THE CONTRACTOR AND SHOULD NOT BE ASSUMED TO BE COMPLETE.

UTILITIES PROTECTION CENTER	811	351-7138
WATER & SEWER COMMISSION	(912)	506-4289
GEORGIA POWER COMPANY	(404)	584-4338
AT&T	(770)	554-3872
SOUTHERN GAS COMPANY	(770)	554-3872
COMCAST	(770)	554-6879
- NO CONTRACTOR SHALL VERIFY ALL EXISTING UTILITY CONDITIONS AND FIELD CONDITIONS. IF A DISCREPANCY EXISTS WITH THE UTILITY LOCATIONS, THE CONTRACTOR SHALL CONTACT COUNTY BEFORE ORDERING ANY POTENTIALLY AFFECTED MATERIALS OR BEGINNING CONSTRUCTION.
- THE CONTRACTOR SHALL RETAIN A GEORGIA LICENSED SURVEYOR TO PROVIDE THE HORIZONTAL AND VERTICAL CONTROL POINTS AND TO VERIFY THE HORIZONTAL AND VERTICAL SEPARATION BETWEEN FIELD MEASUREMENTS AND CONSTRUCTION PLAN INFORMATION SHALL BE BROUGHT TO THE ATTENTION OF COUNTY IMMEDIATELY.
- ANY REFERENCE POINTS, RIGHT-OF-WAY MONUMENTS, PROPERTY CORNERS, BENCHMARKS OR ADJACENT PROPERTY CORNERS SHALL BE PROTECTED AND MAINTAINED THROUGHOUT CONSTRUCTION. ANY ASSOCIATED COSTS SHALL BE THE RESPONSIBILITY OF THE CONTRACTOR. OTHERWISE ALL LANDSCAPES, STREET SIGNS, AND OTHER FEATURES SHALL BE PROTECTED AND MAINTAINED THROUGHOUT CONSTRUCTION. CONSTRUCTION OPERATIONS SHALL BE RESTORED TO THEIR ORIGINAL CONDITION.
- MINIMUM DEPTH OF COVER ON STORM DRAINAGE PIPING SHALL BE 12" COVER DEPTH LESS THAN 12" MUST BE APPROVED IN ADVANCE, IN WRITING BY THE ENGINEER AND COUNTY. ADDITIONAL PROTECTION MAY BE REQUIRED FOR APPROVAL.
- THE MINIMUM HORIZONTAL AND VERTICAL SEPARATION BETWEEN WATER LINES, SEWER LINES, AND STORM DRAINS SHALL CONFORM TO COUNTY REQUIREMENTS.
- THE CONTRACTOR SHALL NOTIFY COUNTY'S INSPECTORS AT LEAST 48 HOURS PRIOR TO COMMENCING CONSTRUCTION.
- THE CONTRACTOR SHALL BE RESPONSIBLE FOR ARRANGING AND SECURING ANY NECESSARY PERMITS AND APPROVALS FOR ALL CONSTRUCTION MATERIALS AND EQUIPMENT. THE SECURITY OF EQUIPMENT AND MATERIAL SHALL BE THE RESPONSIBILITY OF THE CONTRACTOR.
- CONSTRUCTION AND STORAGE AREAS SHALL BE KEPT NEAT AND CLEAN AT ALL TIMES.
- SHIP DRAWINGS AND CERTIFICATIONS FOR ALL CONSTRUCTION MATERIALS ARE REQUIRED. THE CONTRACTOR SHALL SUBMIT SHIP DRAWINGS AND PRODUCT LITERATURE TO THE ENGINEER FOR REVIEW PRIOR TO ORDERING THE MATERIALS REQUIRED FOR CONSTRUCTION.
- ALL NON-FLANGED FITTINGS AND VALVES SHALL UTILIZE RESTRAINED JOINTS. THIS REQUIREMENT SHALL ALSO INCLUDE THE USE OF RESTRAINED JOINTS ALONG ADJACENT JOINTS OF PIPE IN ACCORDANCE WITH COUNTY STANDARD DETAILS.
- THE CLEARING AND CONSTRUCTION LIMITS ARE SHOWN ON THE PLANS. THE CONTRACTOR SHALL PROTECT ALL EXISTING TREES AND OTHER LANDSCAPE FEATURES. THE CONTRACTOR SHALL BE RESPONSIBLE FOR ARRANGING AND SECURING ANY NECESSARY PERMITS AND APPROVALS FOR ALL CONSTRUCTION MATERIALS AND EQUIPMENT. THE SECURITY OF EQUIPMENT AND MATERIAL SHALL BE THE RESPONSIBILITY OF THE CONTRACTOR.
- CONTRACTOR SHALL SUBMIT SHIP DRAWINGS AND PRODUCT LITERATURE TO THE ENGINEER FOR REVIEW PRIOR TO ORDERING THE MATERIALS REQUIRED FOR CONSTRUCTION.
- ALL NON-FLANGED FITTINGS AND VALVES SHALL UTILIZE RESTRAINED JOINTS. THIS REQUIREMENT SHALL ALSO INCLUDE THE USE OF RESTRAINED JOINTS ALONG ADJACENT JOINTS OF PIPE IN ACCORDANCE WITH COUNTY STANDARD DETAILS.
- ALL EXCAVATED TRENCHES SHALL BE COMPLETELY FILLED OR COVERED WITH PLATES AT THE END OF EACH WORK DAY. THIS SHALL BE A MANDATORY REQUIREMENT.
- COMMERCIAL PROPERTIES AT ALL TIMES DURING CONSTRUCTION.

TYPICAL LEGEND



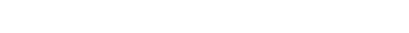
ABBREVIATION LEGEND

AC.	ACRES(S)
C&G	- CURB AND GUTTER
O	- CURB INLET
CMH	- CURB INLET MANHOLE
CONC.	- CONCRETE
CRP	- CORRUGATED METAL PIPE
CP	- CONTROL POINT
ELEV.	- ELEVATION
EXIST.	- EXISTING
ESOP	- EROSION, SEDIMENTATION, AND POLLUTION CONTROL PLAN
GLD.1.	- GEORGIA DEPARTMENT OF TRANSPORTATION
HOPE	- HIGH-DENSITY POLYETHYLENE
INV.	- INVERT
LF.	- LINEAR FEET
O.C.E.W.	- OFF CENTER EACH WAY
PVC	- POLYVINYL CHLORIDE
RECP	- REINFORCED CONCRETE ELLIPTICAL PIPE
RCP	- REINFORCED CONCRETE PIPE
S.F.	- SQUARE FEET
S.S.	- STAINLESS STEEL
SMWH	- STORM DRAIN MANHOLE
SMWH	- SANITARY SEWER MANHOLE
STD.	- STANDARD
S.Y.	- SQUARE YARDS
STA.	- STATION
TYP.	- TYPICAL
V.F.	- VERTICAL FEET

NO.	DATE	REVISIONS/DESCRIPTION
1		
2		
3		
4		

© Georgia Environmental Resources, LLC
 2117 Hillswood
 Marietta, GA 30067
 All Rights Reserved
 This drawing is the property of Georgia Environmental Resources, LLC. It is to be used only for the project and location specified on the drawing. It is not to be reproduced, stored in a retrieval system, or transmitted in any form or by any means, electronic, mechanical, photocopying, recording, or by any information storage and retrieval system, without the prior written permission of Georgia Environmental Resources, LLC. A signed and sealed copy of this drawing is required for construction. A signed and sealed copy of this drawing is required for construction. A signed and sealed copy of this drawing is required for construction.

GEORGIA WATER & SEWER
ENVIRONMENTAL RESOURCES, LLC



FOR
GLYNN COUNTY
BOARD OF COMMISSIONERS
PHASE II
VILLAGE DRAINAGE IMPROVEMENTS

PROJECT NO. 08083748
 DESIGNED: B.E.M.
 CHECKED: B.E.M.
 DATE: APR 2019

GENERAL CONSTRUCTION NOTES
 NOTES, LEGEND, AND ABBREVIATIONS

SCALE: AS SHOWN
 DRAWING NO. **C-1**
 SHEET 1 OF 14

WWW.GEORGIA811.COM
 THE OFFICIAL SOURCE FOR
 UTILITY INFORMATION

NO.	DATE	REVISIONS / DESCRIPTION
1		
2		
3		
4		
5		
6		
7		
8		
9		
10		
11		
12		
13		
14		
15		
16		
17		
18		
19		
20		
21		
22		
23		
24		
25		
26		
27		
28		
29		
30		
31		
32		
33		
34		
35		
36		
37		
38		
39		
40		
41		
42		
43		
44		
45		
46		
47		
48		
49		
50		
51		
52		
53		
54		
55		
56		
57		
58		
59		
60		
61		
62		
63		
64		
65		
66		
67		
68		
69		
70		
71		
72		
73		
74		
75		
76		
77		
78		
79		
80		
81		
82		
83		
84		
85		
86		
87		
88		
89		
90		
91		
92		
93		
94		
95		
96		
97		
98		
99		
100		

REVISIONS

© Georgia Environmental Services, LLC
 2017 All rights reserved.
 1000 Peachtree Street, N.E., Suite 1000
 Atlanta, GA 30309
 Phone: (404) 525-1000
 Fax: (404) 525-1001
 Website: www.ges.com

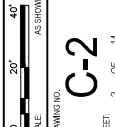
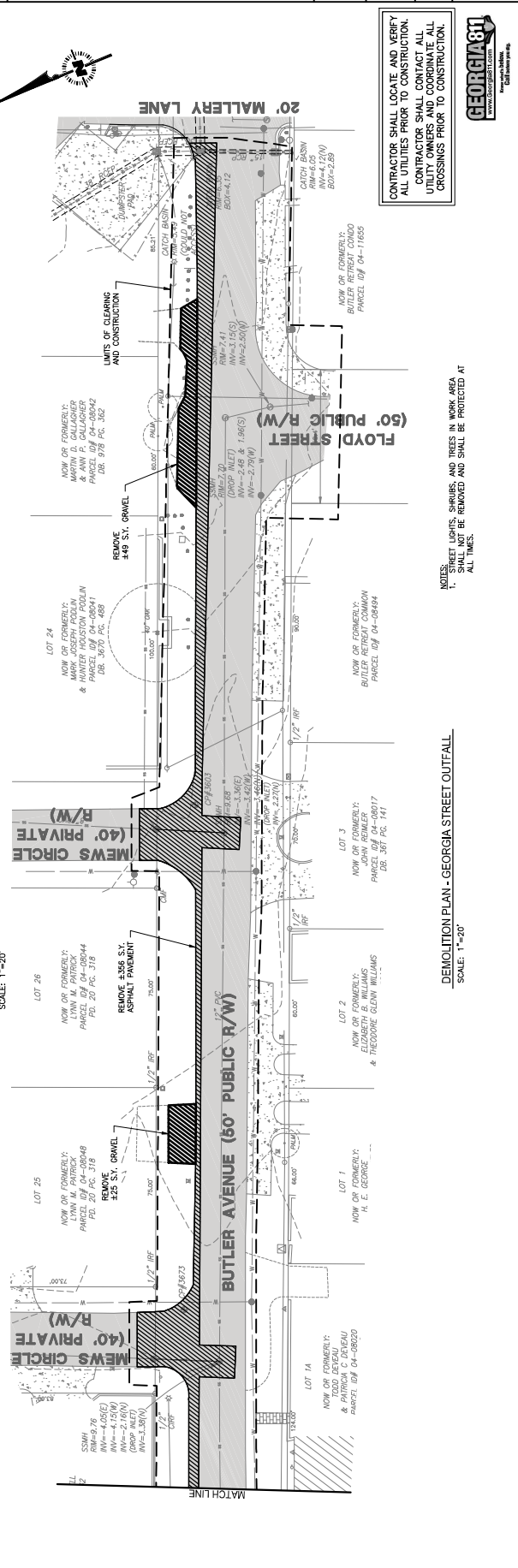
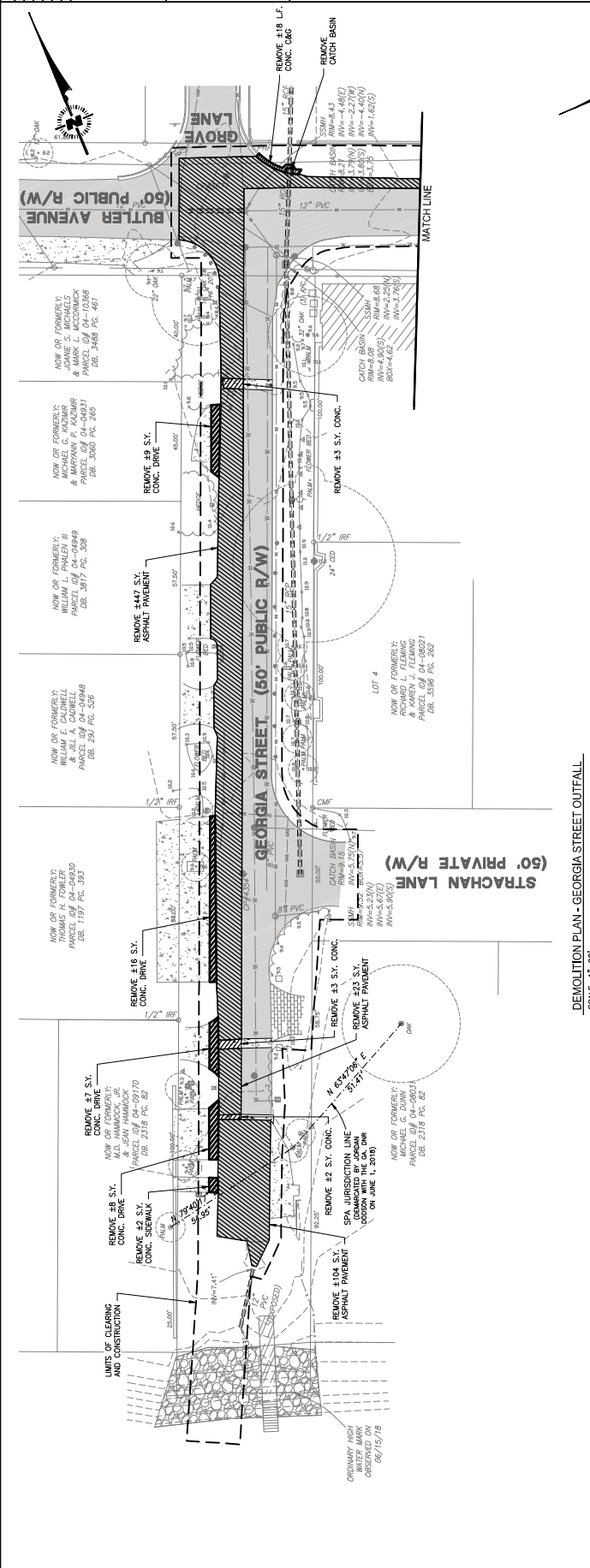
GEORGIA WATER & ENVIRONMENTAL SERVICES, LLC



VILLAGE DRAINAGE IMPROVEMENTS
PHASE II
BOARD OF COMMISSIONERS
GLYNN COUNTY
 GLYNN COUNTY, GEORGIA

PROJECT NO. 68839.218
 DESIGNED BY B.L.K.
 CHECKED BY B.B.M.
 DATE ISSUED: APRIL 2018
 DEMOLITION PLAN - GEORGIA STREET OUTFALL

DRAWING NO. **C-2**
 SCALE: 1" = 20'
 SHEET 2 OF 14

CONTRACTOR SHALL LOCATE AND VERIFY ALL UTILITIES PRIOR TO CONSTRUCTION. CONTRACTOR SHALL CONTACT ALL UTILITY OWNERS AND COORDINATE ALL CROSSINGS PRIOR TO CONSTRUCTION.

NOTES:
 1. STREET LIGHTS, SHRUBS, AND TREES IN WORK AREA SHALL NOT BE REMOVED AND SHALL BE PROTECTED AT ALL TIMES.

GEORGIA811
 www.georgia811.com
 811-444-7273
 Call before you dig

DEMOLITION PLAN - GEORGIA STREET OUTFALL
 SCALE: 1" = 20'

NO.	DATE	REVISIONS / DESCRIPTION

GEORGIA WATER & ENVIRONMENTAL SERVICES, LLC
 2111 J.W. WALKER BLVD.
 ATLANTA, GA 30339
 TEL: 404.525.1234
 WWW.GEORGIAWATERANDENVIRONMENTALSERVICES.COM

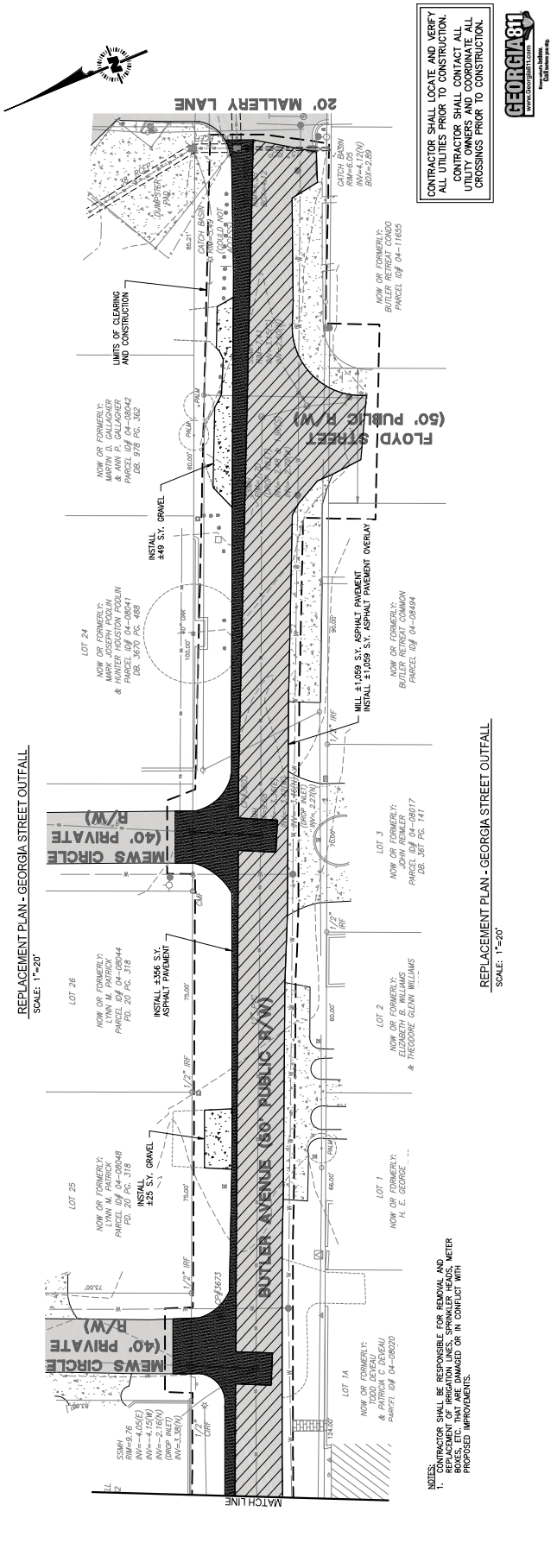
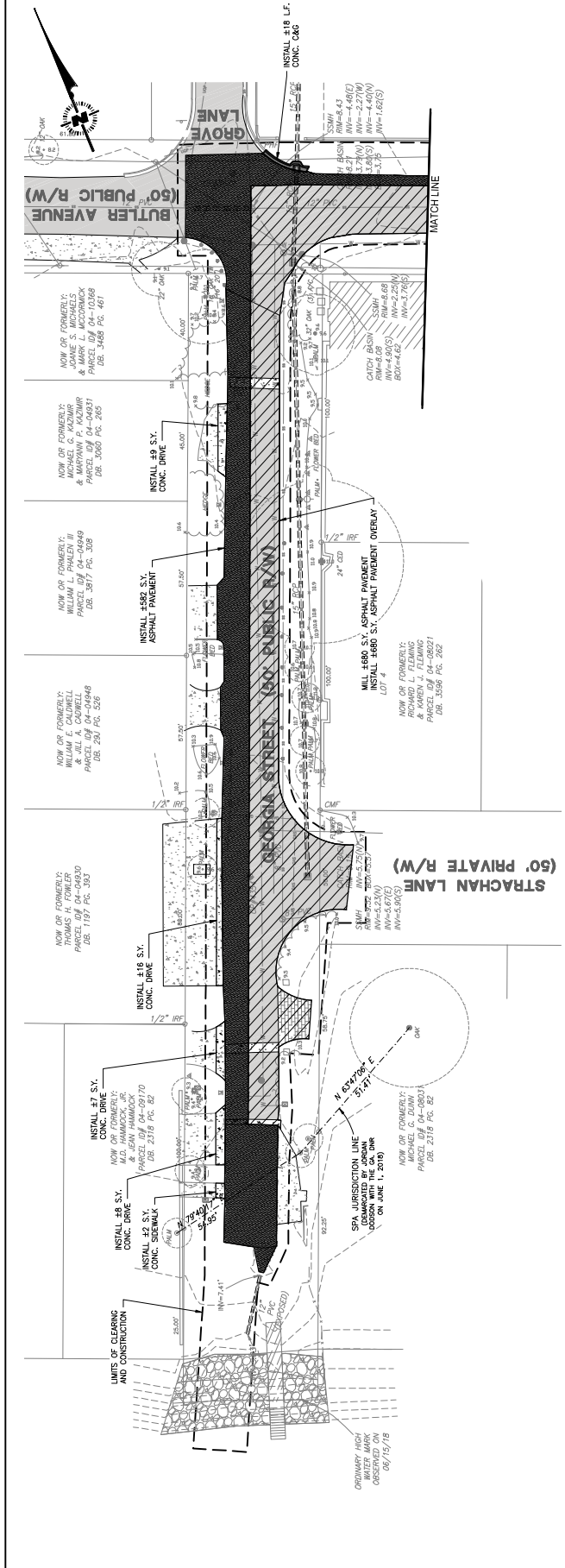


VILLAGE DRAINAGE IMPROVEMENTS
 PHASE II
 FOR
GLYNN COUNTY
 BOARD OF COMMISSIONERS
 GLYNN COUNTY, GEORGIA

PROJECT NO. 08093148
 DESIGNED BY B.L.K.
 CHECKED BY B.B.M.
 DATE ISSUED: APR 2019
 REVISIONS: APR 2019



DRAWING NO. **C-3**
 SHEET 3 OF 14



CONTRACTOR SHALL LOCATE AND VERIFY ALL UTILITIES PRIOR TO CONSTRUCTION. CONTRACTOR SHALL COORDINATE ALL UTILITY OWNERS AND COORDINATE ALL CROSSINGS PRIOR TO CONSTRUCTION.



CONTRACTOR SHALL BE RESPONSIBLE FOR REMOVAL AND REPLACEMENT OF IRRIGATION LINES, SPRINKLER HEADS, METER AND METER BOXES, OR ANY OTHER UTILITY IN CONFLICT WITH PROPOSED IMPROVEMENTS.

REPLACEMENT PLAN - GEORGIA STREET OUTFALL
 SCALE: 1"=20'

REPLACEMENT PLAN - GEORGIA STREET OUTFALL
 SCALE: 1"=20'

NO.	DATE	REVISIONS / DESCRIPTION
1		
2		
3		
4		
5		
6		
7		
8		
9		
10		
11		
12		
13		
14		
15		
16		
17		
18		
19		
20		
21		
22		
23		
24		
25		
26		
27		
28		
29		
30		
31		
32		
33		
34		
35		
36		
37		
38		
39		
40		
41		
42		
43		
44		
45		
46		
47		
48		
49		
50		
51		
52		
53		
54		
55		
56		
57		
58		
59		
60		
61		
62		
63		
64		
65		
66		
67		
68		
69		
70		
71		
72		
73		
74		
75		
76		
77		
78		
79		
80		
81		
82		
83		
84		
85		
86		
87		
88		
89		
90		
91		
92		
93		
94		
95		
96		
97		
98		
99		
100		

© Copyright 2017 by Georgia Water & Sewerage Services, Inc.
 217 Hill Street
 Marietta, GA 30067
 www.gws.com
 All rights reserved.
 No part of this drawing may be reproduced, stored in a retrieval system, or transmitted in any form or by any means, electronic, mechanical, photocopying, recording, or by any information storage and retrieval system, without the prior written permission of Georgia Water & Sewerage Services, Inc. This drawing is the property of Georgia Water & Sewerage Services, Inc. and is loaned to the client for the project only. It is not to be used for any other project without the prior written permission of Georgia Water & Sewerage Services, Inc. The client is responsible for obtaining all necessary permits from the appropriate authorities. The engineer's seal and signature are required for this drawing to be used for construction. The engineer's seal and signature are required for this drawing to be used for construction.

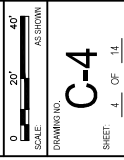
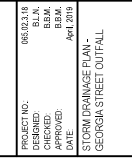
GEORGIA WATER & SEWERAGE SERVICES, LLC

FOR
GLYNN COUNTY
BOARD OF COMMISSIONERS
 GLYNN COUNTY, GEORGIA

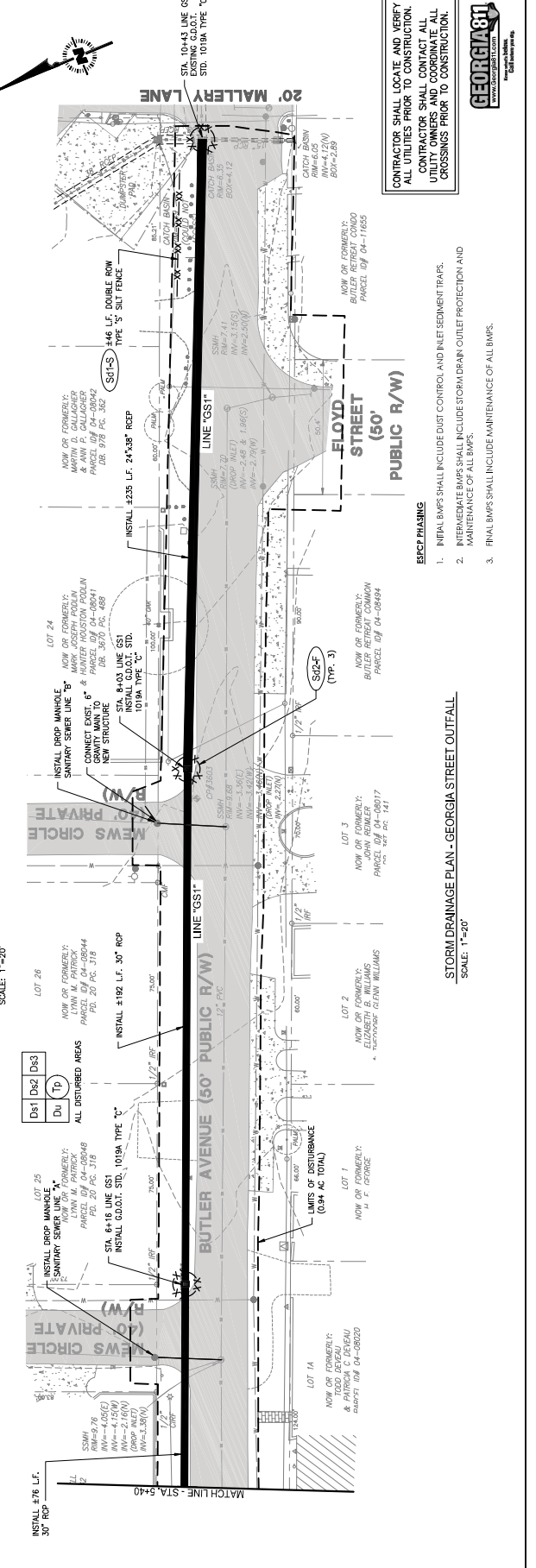
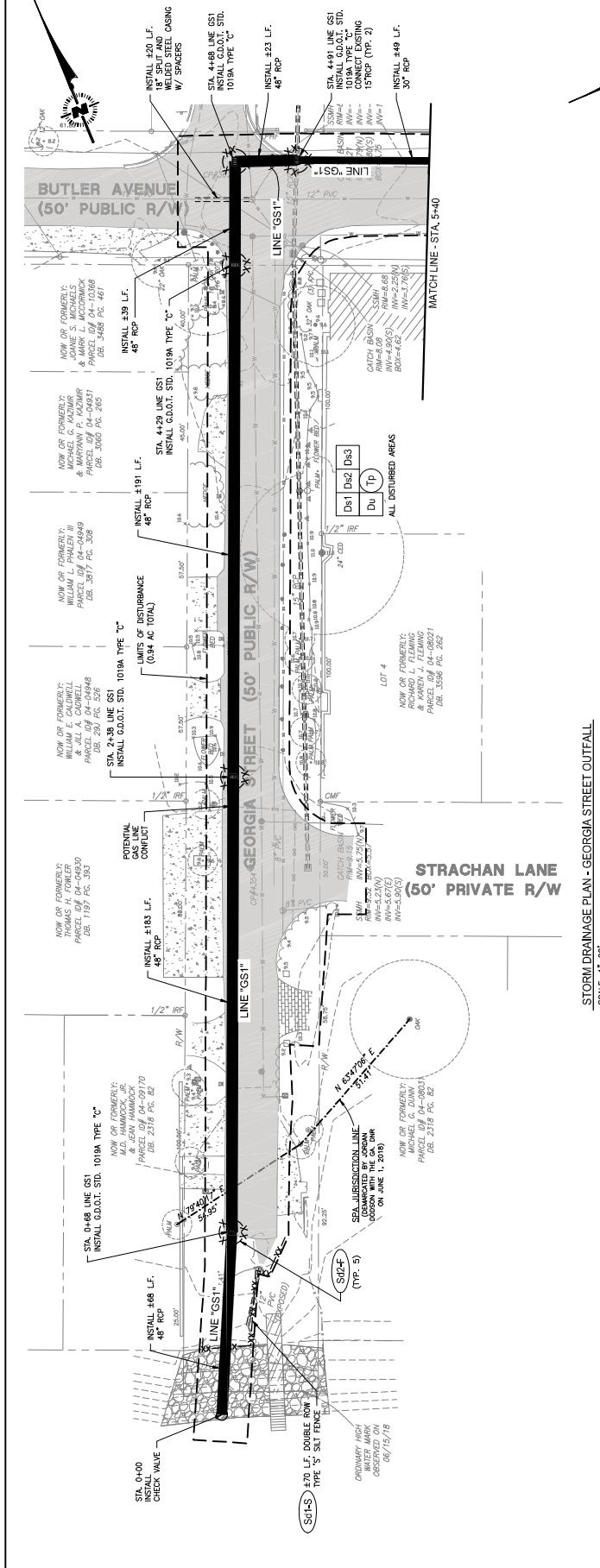
PHASE II
VILLAGE DRAINAGE IMPROVEMENTS

PROJECT NO.	68828148
DESIGNED BY	B.L.K.
CHECKED BY	B.E.M.
DATE	APR 2019
DATE	APR 2019

STORM DRAINAGE PLAN - GEORGIA STREET OUTFALL



DRAWING NO. **C-4**
 SHEET 4 OF 14



CONTRACTOR SHALL LOCATE AND VERIFY ALL UTILITIES PRIOR TO CONSTRUCTION. CONTRACTOR SHALL NOTIFY ALL UTILITY OWNERS AND COORDINATE ALL CROSSINGS PRIOR TO CONSTRUCTION.

ERCCP PHASING

- INITIAL B MPS SHALL INCLUDE DUST CONTROL AND INLET SEDIMENT TRAPS.
- INTERMEDIATE B MPS SHALL INCLUDE STORM DRAIN OUTLET PROTECTION AND MAINTENANCE OF ALL B MPS.
- FINAL B MPS SHALL INCLUDE MAINTENANCE OF ALL B MPS.

STORM DRAINAGE PLAN - GEORGIA STREET OUTFALL
 SCALE: 1"=20'

STORM DRAINAGE PLAN - GEORGIA STREET OUTFALL
 SCALE: 1"=20'



NO.	DATE	DESCRIPTION

© Georgia 811 Environmental Services, LLC
 2017 All Rights Reserved.
 No part of this drawing may be reproduced or transmitted in any form or by any means, electronic or mechanical, including photocopying, recording, or by any information storage and retrieval system, without the prior written permission of Georgia 811 Environmental Services, LLC.

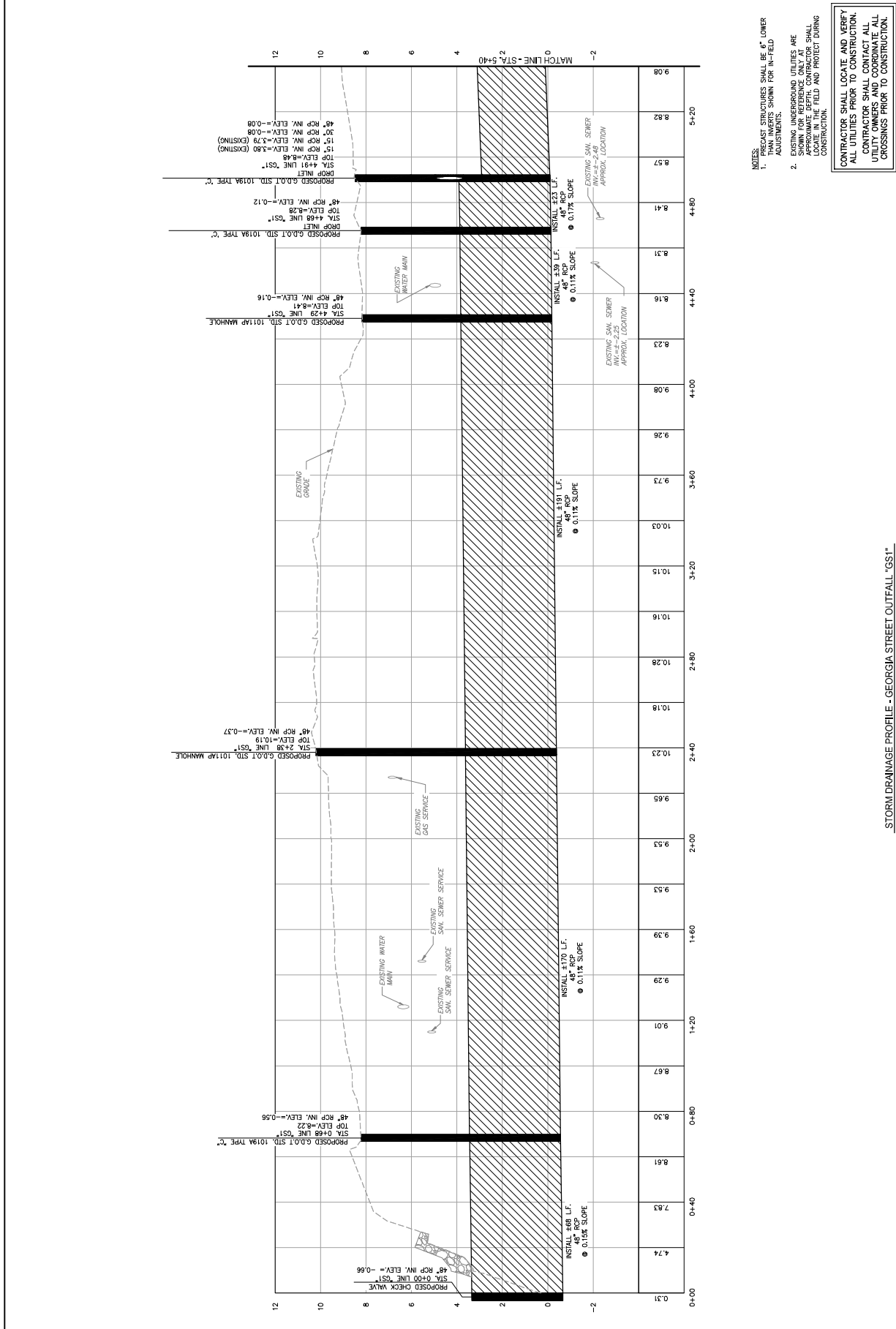
FOR
GLYNN COUNTY
BOARD OF COMMISSIONERS
 GLYNN COUNTY, GEORGIA



VILLAGE DRAINAGE IMPROVEMENTS
PHASE II

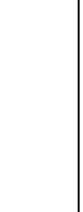
PROJECT NO. 6887318
 DESIGNED BY B.L.N.
 CHECKED BY B.M.
 APPROVED BY DATE APR 2019
 STORM DRAINAGE PROFILE
 GEORGIA STREET OUTFALL
 'GSI'

DRAWING NO. AS SHOWN
 SCALE: AS SHOWN
C-5
 SHEET 5 OF 14

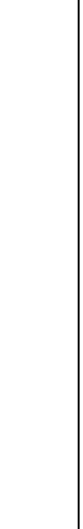


NOTES:
 1. PROUST STRUCTURES SHALL BE 6" LOWER THAN SHOWN FOR IN-FIELD ADJUSTMENTS.
 2. EXISTING UNDERGROUND UTILITIES ARE SHOWN FOR REFERENCE ONLY AT APPROXIMATE DEPTHS. CONTRACTOR SHALL LOCATE ALL UTILITIES IN FIELD AND PROTECT DURING CONSTRUCTION.

CONTRACTOR SHALL LOCATE AND VERIFY ALL UTILITIES PRIOR TO CONSTRUCTION. CONTRACTOR SHALL COORDINATE ALL UTILITY OWNERS AND COORDINATE ALL CROSSINGS PRIOR TO CONSTRUCTION.



STORM DRAINAGE PROFILE - GEORGIA STREET OUTFALL 'GSI'



NO.	DATE	DESCRIPTION

© Copyright 2017 by Georgia Environmental Services, LLC.
 All rights reserved.
 No part of this drawing may be reproduced, stored in a retrieval system, or transmitted in any form or by any means, electronic, mechanical, photocopying, recording, or by any information storage and retrieval system, without the prior written permission of Georgia Environmental Services, LLC.
 This drawing is the property of Georgia Environmental Services, LLC. It is to be used only for the project and site identified herein. It is not to be used for any other project or site without the prior written permission of Georgia Environmental Services, LLC.
 No warranty is made by Georgia Environmental Services, LLC. The user of this drawing is responsible for verifying the accuracy of the information shown herein and for obtaining all necessary permits and approvals from the appropriate authorities.

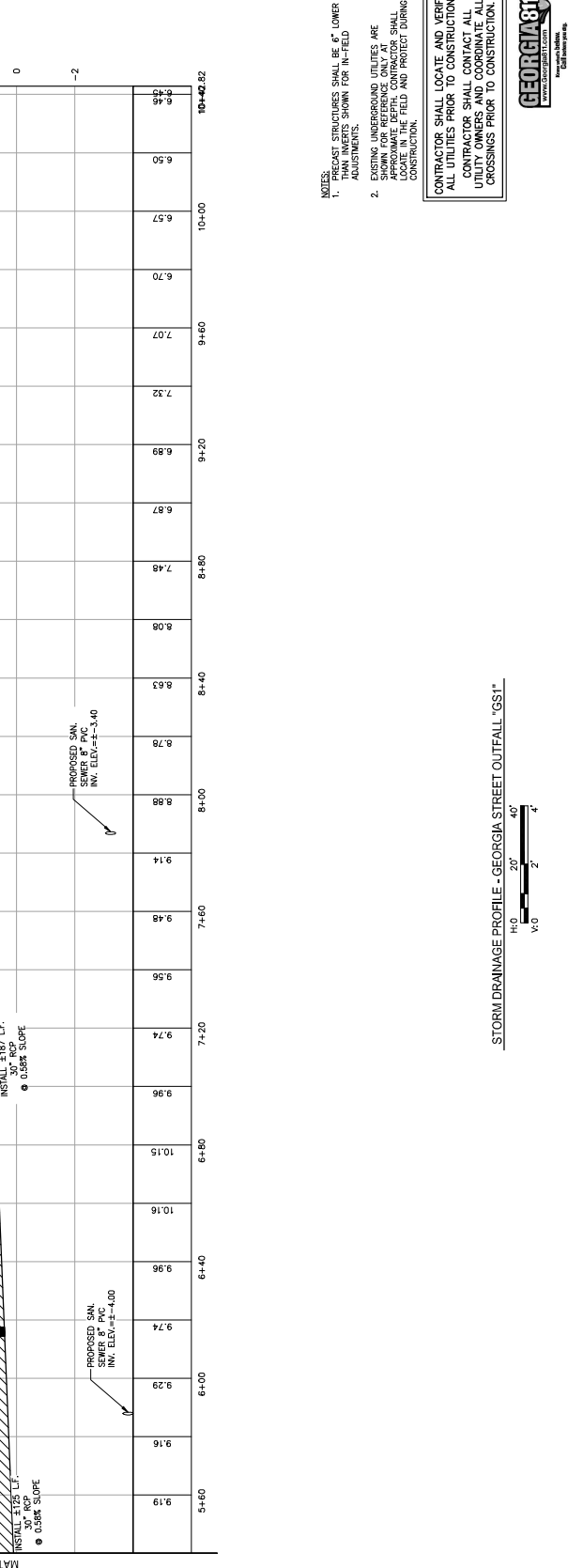
GEORGIA WATER & ENVIRONMENTAL SERVICES, LLC

FOR
GLYNN COUNTY BOARD OF COMMISSIONERS
 GLYNN COUNTY, GEORGIA

VILLAGE DRAINAGE IMPROVEMENTS
 PHASE II

PROJECT NO. 6802318
 DESIGNED: B.L.N.
 CHECKED: B.B.M.
 APPROVED: DATE: APR 2019
 STORM DRAINAGE PROFILE
 GEORGIA STREET OUTFALL
 1/32"1"

DRAWING NO. AS SHOWN
 SCALE: AS SHOWN
C-6
 SHEET: 6 OF 14



NO.	DATE	DESCRIPTION

GEORGIA WATER & SEWER SERVICES, LLC
 2017 All Rights Reserved.
 1000 Peachtree Street, N.E.
 Atlanta, GA 30309
 www.gwss.com
 This drawing is the property of Georgia Water & Sewer Services, LLC. It is to be used for the project and location specifically identified herein. It is not to be reproduced, stored in a retrieval system, or transmitted in any form or by any means, electronic, mechanical, photocopying, recording, or by any information storage and retrieval system, without the prior written permission of Georgia Water & Sewer Services, LLC.



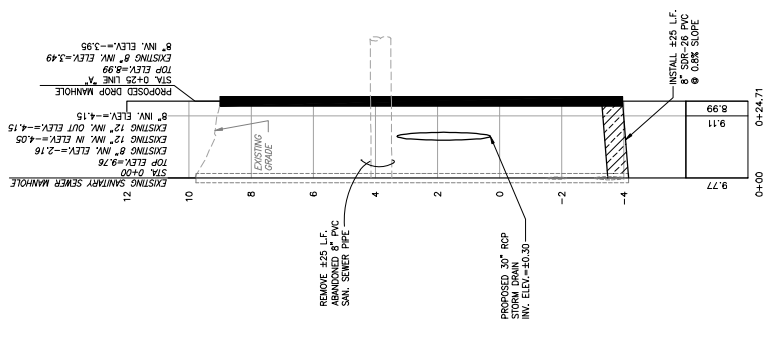
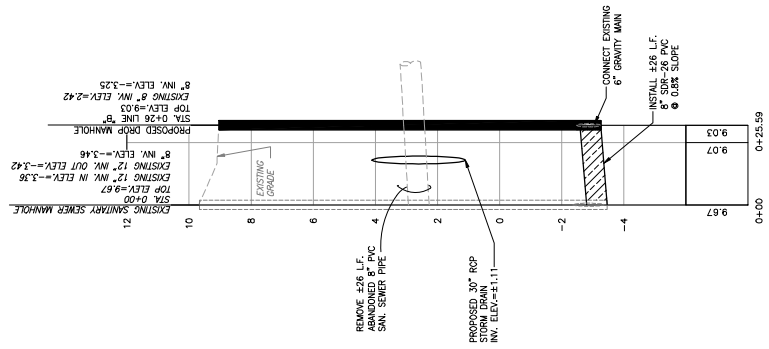
VILLAGE DRAINAGE IMPROVEMENTS
FOR
GLYNN COUNTY
BOARD OF COMMISSIONERS
 GLYNN COUNTY, GEORGIA
PHASE II

PROJECT NO. 6802318
 DESIGNED BY B.L.N.
 CHECKED BY B.E.M.
 APPROVED BY J.M.M.
 DATE APR 2018
 SANITARY SEWER PROFILES
 LINE 'A' AND LINE 'B'

DRAWING NO. AS SHOWN
 SCALE
C-7
 SHEET 7 OF 14

- NOTES:
1. PRECAST STRUCTURES SHALL BE 6" LOWER THAN SHOWN FOR IN-FIELD ADJUSTMENTS.
 2. EXISTING UNDERGROUND UTILITIES ARE SHOWN FOR REFERENCE ONLY AT THE LOCATION OF THE PROPOSED SANITARY SEWER. CONTRACTOR SHALL LOCATE ALL UTILITIES IN THE FIELD AND PROVIDE BANDING CONSTRUCTION.

CONTRACTOR SHALL LOCATE AND VERIFY ALL UTILITIES PRIOR TO CONSTRUCTION. CONTRACTOR SHALL VERIFY ALL CROSSINGS WITH UTILITY OWNERS AND COORDINATE ALL CROSSINGS PRIOR TO CONSTRUCTION.



NO.	DATE	REVISION DESCRIPTION

© Copyright 2017, Environmental Design, Inc.
 10000 Old Forest Road, Suite 100
 Atlanta, GA 30328
 404.487.1111
 www.edi.com
 This drawing is the property of Environmental Design, Inc. and is to be used only for the project and location specified. It is not to be reproduced, stored in a retrieval system, or transmitted in any form or by any means, electronic, mechanical, photocopying, recording, or by any information storage and retrieval system, without the prior written consent of Environmental Design, Inc. All rights reserved.

GEORGIA WATER & SEWERAGE BOARD
BOARD OF COMMISSIONERS
 FOR
GLYNN COUNTY
 GLYNN COUNTY, GEORGIA

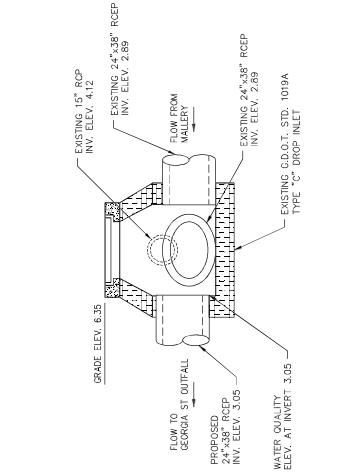


VILLAGE DRAINAGE IMPROVEMENTS
PHASE II
 FOR
GLYNN COUNTY
 BOARD OF COMMISSIONERS
 GLYNN COUNTY, GEORGIA

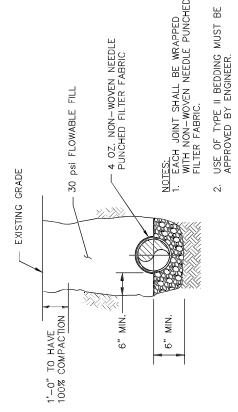
PROJECT NO. 0808214
 DESIGNED BY B.J.N.
 CHECKED BY B.M.
 DATE: APR 2019

MISCELLANEOUS DETAILS

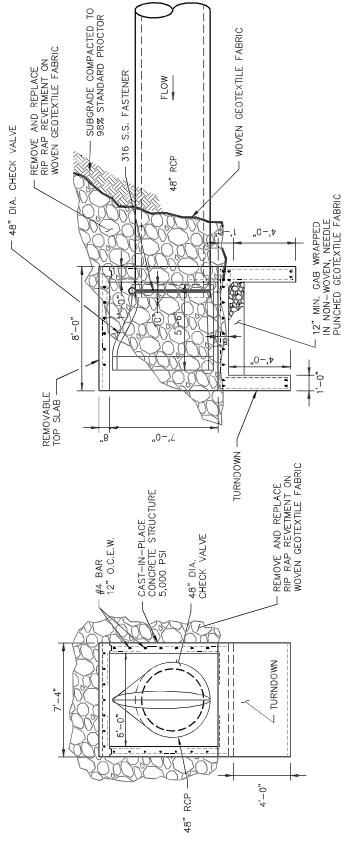
SCALE: AS SHOWN
 DRAWING NO. **C-8**
 SHEET: 8 OF 14



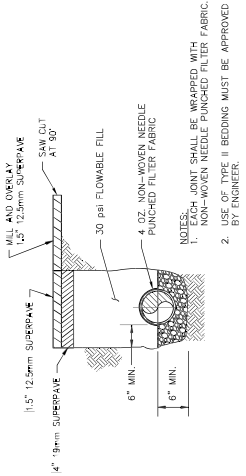
2 **DETAIL - WATER QUALITY STRUCTURE**
 SCALE: N.T.S.



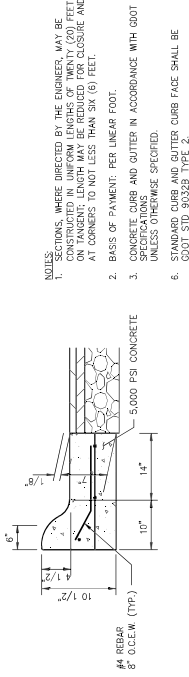
4 **DETAIL - STORM PIPE BEDDING**
 SCALE: N.T.S.



1 **DETAIL - GEORGIA STREET OUTFALL STRUCTURE**
 SCALE: N.T.S.



3 **DETAIL - ASPHALT PAVEMENT REPLACEMENT AND STORM PIPE BEDDING**
 SCALE: N.T.S.



5 **DETAIL - HEAVY DUTY ROLL-OVER CURB AND GUTTER**
 SCALE: N.T.S.

- NOTES:**
- CONSTRUCTIONS WHERE DIRECTED BY THE ENGINEER, MAY BE CONSTRUCTED IN UNIFORM LENGTHS OF TWENTY (20) FEET ON TANGENT; LENGTH MAY BE REDUCED FOR CURVE AND AT CORNERS TO NOT LESS THAN SIX (6) FEET.
 - BASES OF PAVEMENT: PER LINEAR FOOT.
 - CONCRETE CURB AND GUTTER IN ACCORDANCE WITH GDOT SPECIFICATIONS.
 - UNLESS OTHERWISE SPECIFIED.
 - STANDARD CURB AND GUTTER CURE FACE SHALL BE GDOT STD. 9030B TYPE 2.

NO.	DATE	REVISIONS / DESCRIPTION

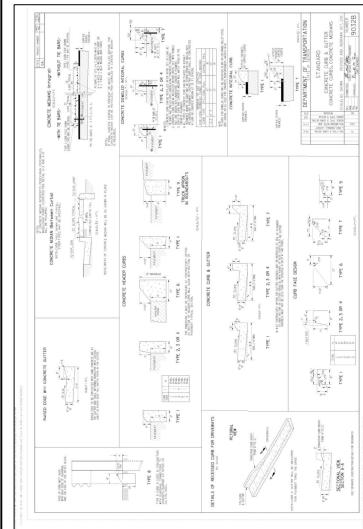
© Copyright 2017 Hill International, Inc.
 1000 Peachtree Street, N.E., Suite 1000
 Atlanta, GA 30309
 Telephone: 404.520.8000
 Fax: 404.520.8001
 Website: www.hillinternational.com

GEORGIA WATER & SEWERAGE BOARD
BOARD OF COMMISSIONERS
 FOR
GLYNN COUNTY
 PHASE II
VILLAGE DRAINAGE IMPROVEMENTS
 GLYNN COUNTY, GEORGIA

PROJECT NO. 08503 STA.
 DESIGNED BY B.L.N.
 CHECKED BY B.E.M.
 DATE ISSUED APRIL 2019
 DATE APRIL 2019

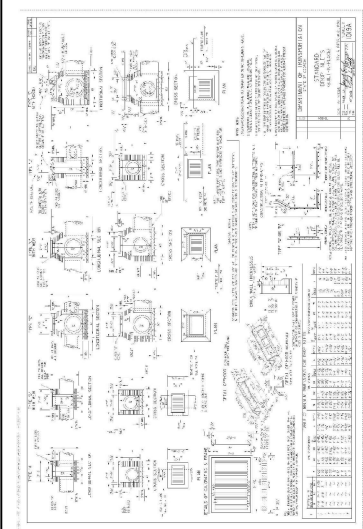
MISCELLANEOUS DETAILS

SCALE AS SHOWN
C-9
 SHEET 9 OF 14



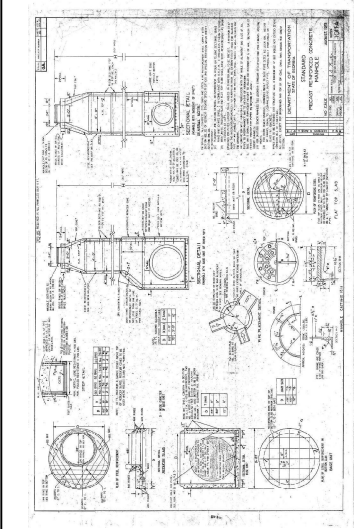
8 DETAIL - G.D.O.T. STD. 9032B: CONCRETE CURB AND GUTTER
 SCALE: N.T.S.

- NOTES:
 1. CURB AND GUTTER TO BE USED WHERE PAVEMENT BRIMS AWAY FROM CURB AND NORMAL GUTTER TO BE USED WHERE PAVEMENT BRIMS TOWARD GUTTER.
 2. FIVE FOOT LONG TRANSITIONS SHALL BE PROVIDED BETWEEN NORMAL GUTTER AND PITCHED GUTTER.
 3. SECTIONS, WHERE DIRECTED BY THE ENGINEER, MAY BE CONSTRUCTED IN UNIFORM LENGTHS OF TWENTY (20) FEET ON TANGENT; LENGTH MAY BE REDUCED FOR CLOSURE AND AT CORNERS TO NOT LESS THAN SIX (6) FEET.
 4. BASIS OF PAYMENT: PER LINEAR FOOT (INCLUDING VARIABLE HEIGHT CURBS)
 5. CONCRETE CURB AND GUTTER IN ACCORDANCE WITH GOOT SPECIFICATIONS UNLESS OTHERWISE SPECIFIED.
 6. STANDARD CURB AND GUTTER CURB FACE SHALL BE GOOT STD 9032B TYPE 2.



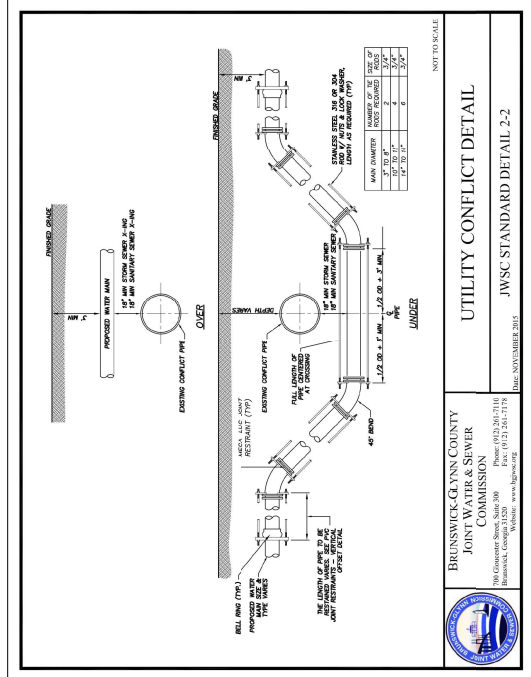
7 DETAIL - G.D.O.T. STD. 1019A: MODIFIED DROP INLET
 SCALE: N.T.S.

- NOTES:
 1. G.D.O.T. STD. DETAILS SHOWN FOR CONFORMANCE ONLY. PLEASE REFER TO G.D.O.T. WEBSITE FOR CURRENT CONSTRUCTION STANDARDS AND DETAILS.
<http://myplans.dot.ga.gov/Info/gpo/pubs/ConstructionStandardsAndDetails/Forms/AllItems.aspx>

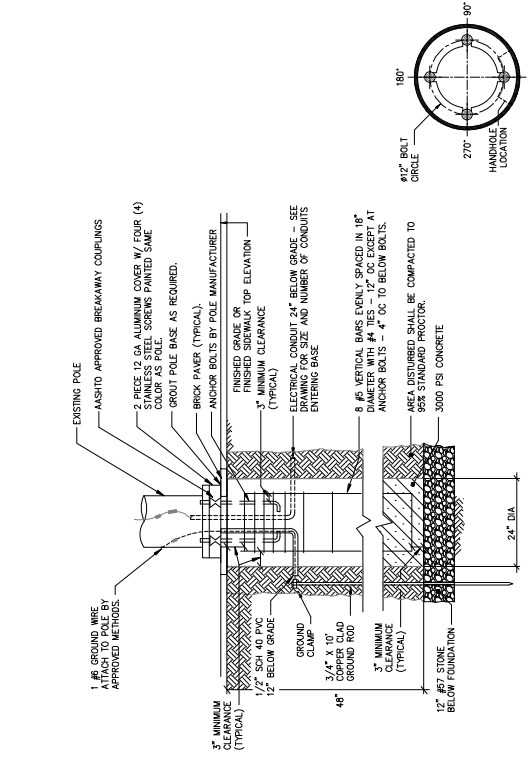


6 DETAIL - G.D.O.T. STD. 1011AP: PRECAST REINFORCED CONCRETE MANHOLE
 SCALE: N.T.S.

- NOTES:
 1. G.D.O.T. STD. DETAILS SHOWN FOR CONFORMANCE ONLY. PLEASE REFER TO G.D.O.T. WEBSITE FOR CURRENT CONSTRUCTION STANDARDS AND DETAILS.
<http://myplans.dot.ga.gov/Info/gpo/pubs/ConstructionStandardsAndDetails/Forms/AllItems.aspx>



10 DETAIL - JWSC STD. UTILITY CONFLICT
 SCALE: N.T.S.



9 DETAIL - FIXTURE FOUNDATION
 SCALE: N.T.S.

BRUNSWICK-GLYNN COUNTY JOINT WATER & SEWER COMMISSION
 100 Gilchrist Street, Brunswick, Georgia 31520-3000
 Phone: (912) 261-3116 Fax: (912) 261-3179
 Website: www.bjswc.com Date: NOVEMBER 2013

UTILITY CONFLICT DETAIL
 JWSC STANDARD DETAIL 2-2

NO.	DATE	REVISIONS / DESCRIPTION

© Copyright 2011 by Georgia Water & Sewerage Consultants, LLC.
 2117 Middlebrook Road
 Marietta, GA 30067
 All rights reserved. This drawing is the property of Georgia Water & Sewerage Consultants, LLC. It is to be used only for the project and location specified. No part of this drawing may be reproduced or transmitted in any form or by any means, electronic or mechanical, including photocopying, recording, or by any information storage and retrieval system, without the prior written permission of Georgia Water & Sewerage Consultants, LLC. This drawing is to be used in accordance with the contract documents. The user of this drawing is responsible for obtaining all necessary permits and for compliance with all applicable laws, codes, and regulations. The user of this drawing is also responsible for obtaining all necessary approvals from the appropriate authorities. The user of this drawing is also responsible for obtaining all necessary approvals from the appropriate authorities. The user of this drawing is also responsible for obtaining all necessary approvals from the appropriate authorities.

GEORGIA WATER & SEWERAGE CONSULTANTS, LLC



**FOR
GLYNN COUNTY
BOARD OF COMMISSIONERS**

**PHASE II
VILLAGE DRAINAGE IMPROVEMENTS**

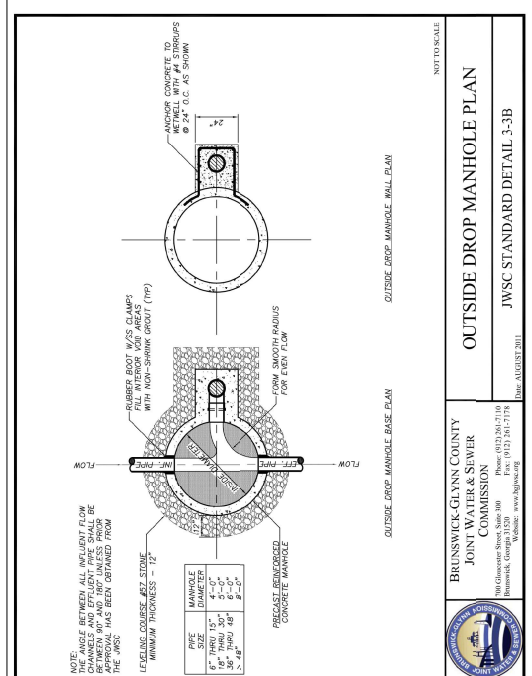
PROJECT NO. 08030218
 DESIGNED BY B.L.N.
 CHECKED BY B.E.M.
 DATE OF ISSUE: APRIL 2019
 DATE: APRIL 2019

MISCELLANEOUS DETAILS

SCALE: AS SHOWN

C-10

DRAWING NO. _____
 SHEET 10 OF 14

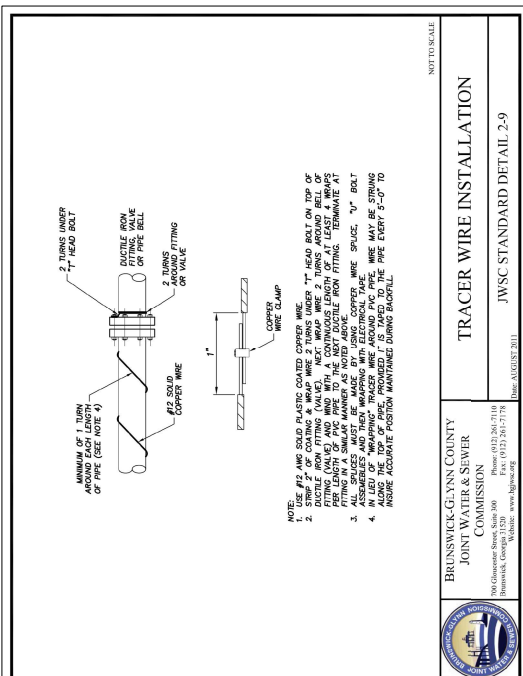


**BRUNSWICK-GLYNN COUNTY
JOINT WATER & SEWER
COMMISSION**

OUTSIDE DROP MANHOLE PLAN

JWSC STANDARD DETAIL 3-3B

DATE: AUGUST 2011

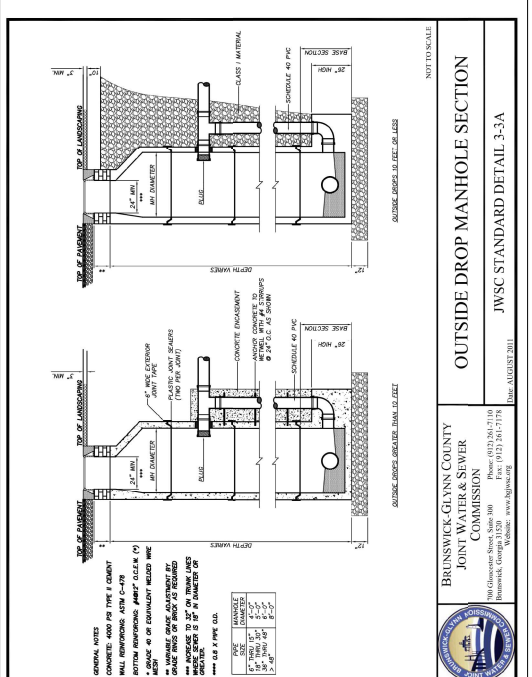


**BRUNSWICK-GLYNN COUNTY
JOINT WATER & SEWER
COMMISSION**

TRACER WIRE INSTALLATION

JWSC STANDARD DETAIL 2-9

DATE: AUGUST 2011

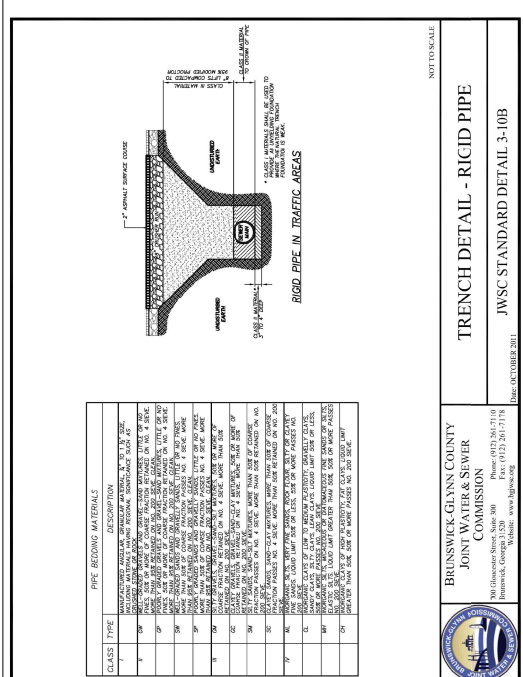


**BRUNSWICK-GLYNN COUNTY
JOINT WATER & SEWER
COMMISSION**

OUTSIDE DROP MANHOLE SECTION

JWSC STANDARD DETAIL 3-3A

DATE: AUGUST 2011



**BRUNSWICK-GLYNN COUNTY
JOINT WATER & SEWER
COMMISSION**

TRENCH DETAIL - RIGID PIPE

JWSC STANDARD DETAIL 3-10B

DATE: OCTOBER 2011

11 DETAIL - JWSC STD. MANHOLE.
SCALE: N.T.S.

12 DETAIL - JWSC STD. SEWER BEDDING.
SCALE: N.T.S.

13 DETAIL - JWSC STD. TRACER WIRE INSTALLATION.
SCALE: N.T.S.

NO.	DATE	REVISIONS / DESCRIPTION

© Copyright 2017 by Georgia Water & Sewerage Consultants, LLC. All rights reserved.
 No part of this document may be reproduced, stored in a retrieval system, or transmitted in any form or by any means, electronic, mechanical, photocopying, recording, or by any information storage and retrieval system, without the prior written permission of Georgia Water & Sewerage Consultants, LLC. This document is the property of Georgia Water & Sewerage Consultants, LLC and is loaned to the client for the project only. It is not to be distributed, copied, or used for any other project without the prior written permission of Georgia Water & Sewerage Consultants, LLC. This document is the property of Georgia Water & Sewerage Consultants, LLC and is loaned to the client for the project only. It is not to be distributed, copied, or used for any other project without the prior written permission of Georgia Water & Sewerage Consultants, LLC.

GEORGIA WATER & SEWERAGE CONSULTANTS, LLC



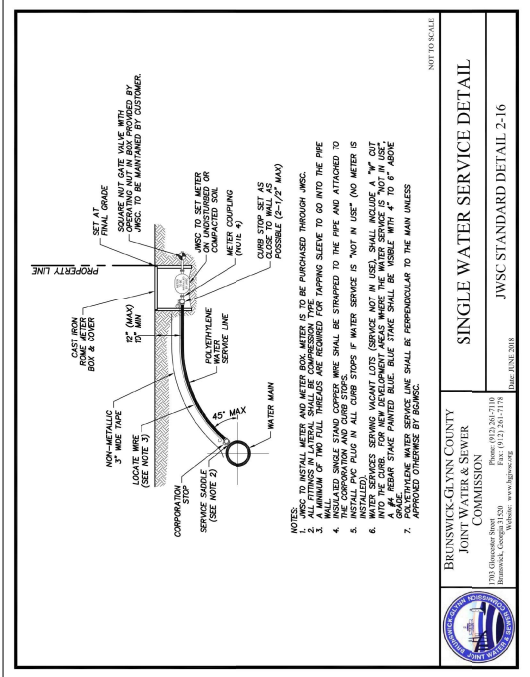
GEORGIA WATER & SEWERAGE CONSULTANTS, LLC

VILLAGE DRAINAGE IMPROVEMENTS
PHASE II
FOR
GLYNN COUNTY
BOARD OF COMMISSIONERS
 GLYNN COUNTY, GEORGIA

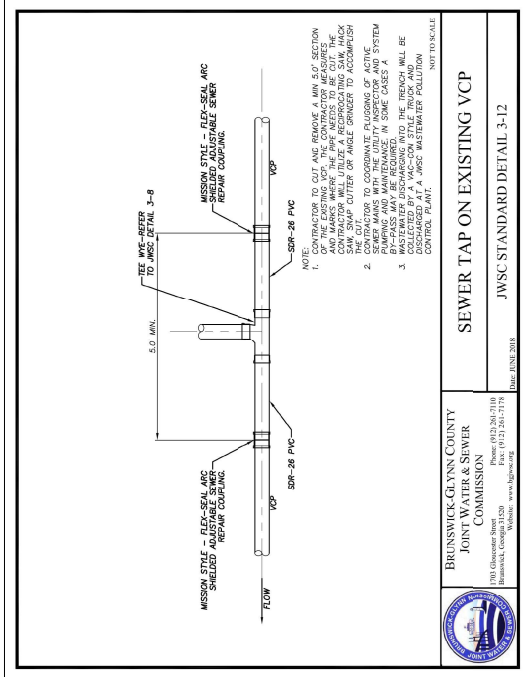
PROJECT NO. 18078
 CHECKED: B.J.N.
 DATE: APR 2019

MISCELLANEOUS DETAILS

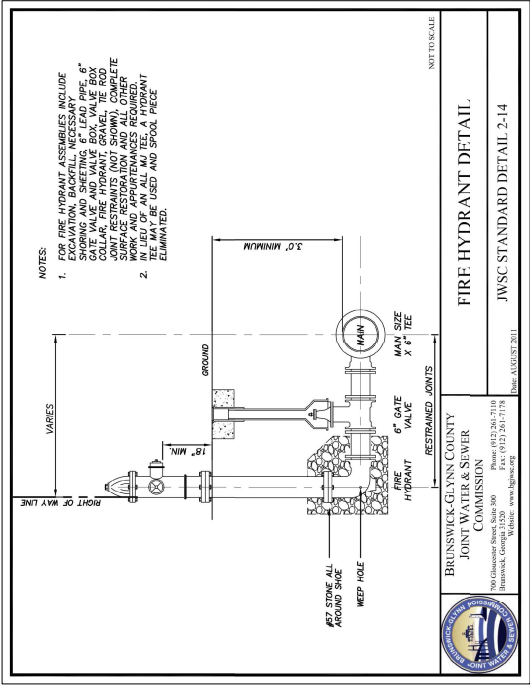
SCALE: AS SHOWN
C-11
 SHEET 11 OF 14



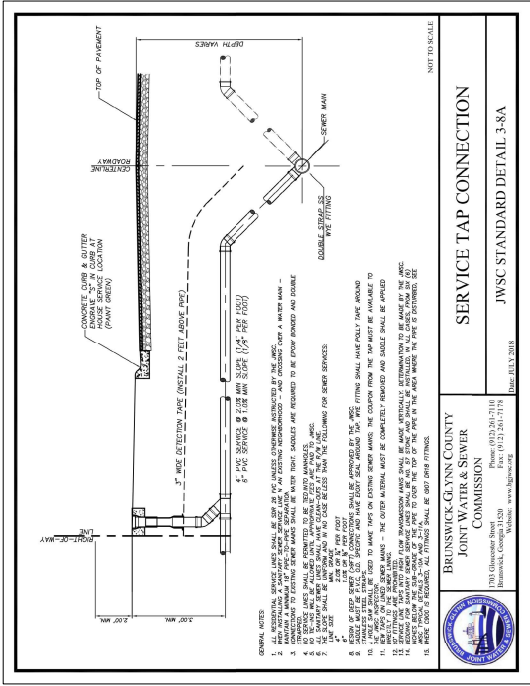
15 DETAIL - JWSC STD. SINGLE WATER SERVICE
 SCALE: N.T.S.



16 DETAIL - JWSC STD. SEWER TAP ON EXISTING VCP
 SCALE: N.T.S.



14 DETAIL - JWSC STD. FIRE HYDRANT
 SCALE: N.T.S.



17 DETAIL - JWSC STD. SERVICE TAP CONNECTION
 SCALE: N.T.S.

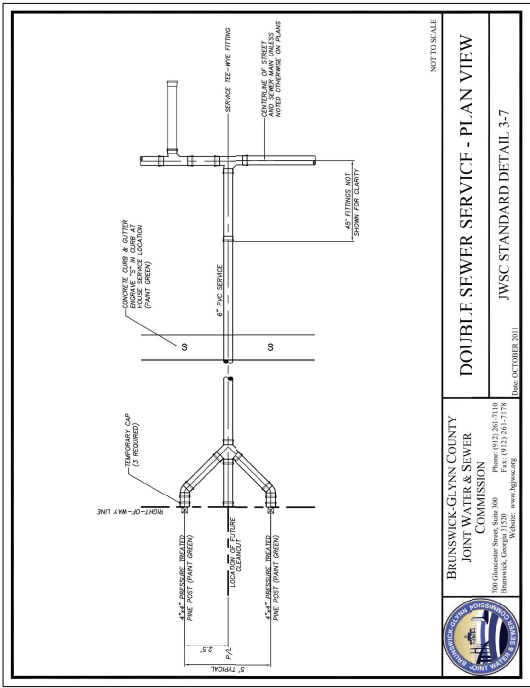
NO.	DATE	REVISIONS / DESCRIPTION

© Copyright 2017 by JWS&S, Inc. All rights reserved.
 JWS&S, Inc. hereby warrants that the drawings herein were prepared by a duly licensed Professional Engineer in the State of Georgia, and that the drawings were prepared in accordance with the Georgia Engineering Code, and that the drawings were prepared in accordance with the Georgia Engineering Code, and that the drawings were prepared in accordance with the Georgia Engineering Code.

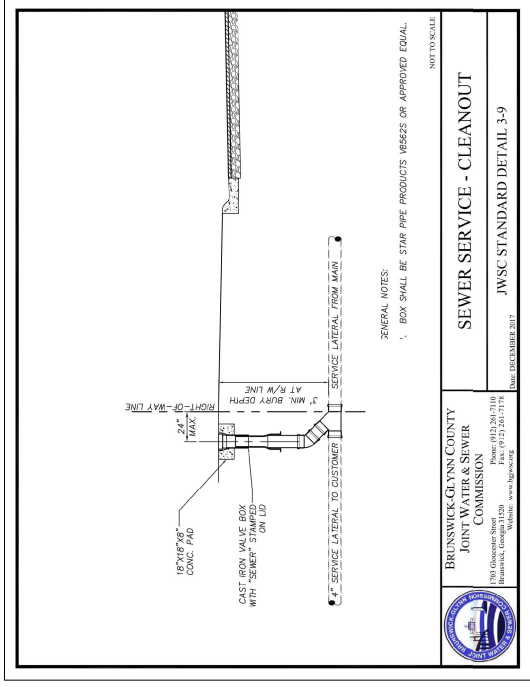


VILLAGE DRAINAGE IMPROVEMENTS
 PHASE II
 FOR
 GLYNN COUNTY
 BOARD OF COMMISSIONERS
 GLYNN COUNTY, GEORGIA

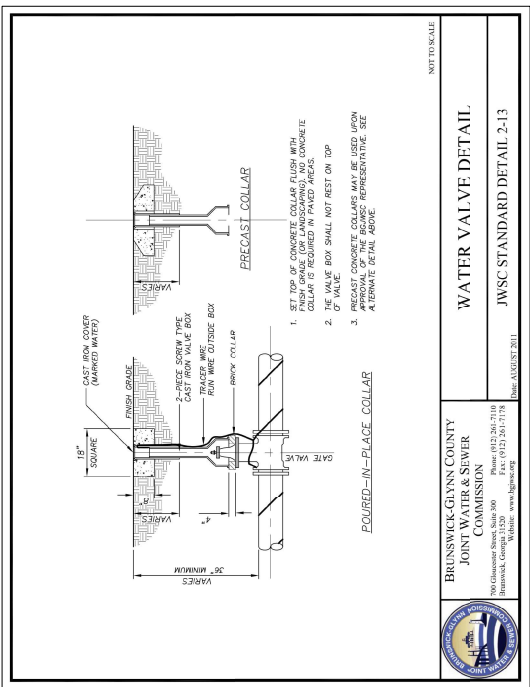
PROJECT NO. 0882374
 DESIGNED BY B.J.N.
 CHECKED BY B.E.M.
 DATE ISSUED APR 2018
 DATE APR 2018
 MISCELLANEOUS DETAILS
 SCALE DRAWING NO. AS SHOWN
C-12
 SHEET 12 OF 14



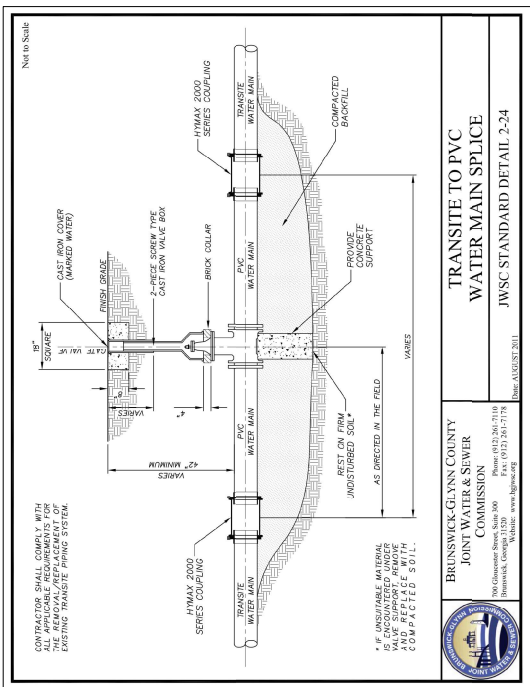
19 DETAIL - JWSC STD. DOUBLE SEWER SERVICE
 SCALE: N.T.S.



21 DETAIL - JWSC STD. SEWER SERVICE - CLEANOUT
 SCALE: N.T.S.



18 DETAIL - JWSC STD. WATER VALVE
 SCALE: N.T.S.



20 DETAIL - JWSC STD. TRANSITE TO PVC WATER MAIN SPlice
 SCALE: N.T.S.

24. NON-EMPT ACTIVITIES SHALL NOT BE CONDUCTED WITHIN THE 25 UNDISTURBED STREAM BUFFERS AS WELL AS WITHIN THE 100 FOOT WIDENED VEGETATION WITHOUT FIRST ACQUIRING THE NECESSARY VARIANCES AND PERMITS.

25. WASTE MATERIAL SHALL NOT BE DEPOSITED TO WATERS OF THE STATE, EXCEPT AS AUTHORIZED BY A SECTION 404 PERMIT.

26. THERE IS NO SIGNIFICANT INCREASE IN STORMWATER RUNOFF DUE TO CONSTRUCTION ACTIVITIES.

EROSION, SEDIMENTATION, AND POLLUTION CONTROL AND VEGETATION NOTES:

- EROSION AND SEDIMENTATION CONTROL MEASURES SHALL BE INSTALLED, INSPECTED, AND MAINTAINED IN ACCORDANCE WITH THE PLANS AND SPECIFICATIONS AND LOCAL AND STATE REQUIREMENTS.
- EROSION AND SEDIMENTATION CONTROL MEASURES SHALL BE INSPECTED DAILY BY THE CONTRACTOR, AND REQUIRED REPAIRS OR MAINTENANCE SHALL BE COMPLETED BEFORE WORK STOPS EACH DAY.
- ALL EROSION AND SEDIMENTATION CONTROL MEASURES SHALL BE CONTINUOUSLY MAINTAINED BY THE CONTRACTOR DURING CONSTRUCTION.
- FAILURE TO PROPERLY INSTALL AND MAINTAIN BEST MANAGEMENT PRACTICES (BMPs) IN REGARDS TO EROSION AND SEDIMENTATION CONTROL MAY RESULT IN A STOP WORK ORDER UNDER BMPs MEET LOCAL AND STATE REQUIREMENTS.
- ESTABLISHMENT OF TEMPORARY (D20) AND PERMANENT (D23) VEGETATION FOR THE PROJECT SHALL BE PERFORMED AS DETAILED IN DRAWING NO. C-4.
- APPLY FERTILIZER CONTAINING NITROGEN, PHOSPHORUS, AND POTASH AT RATES RECOMMENDED BY THE MANUFACTURER. APPLY AGRICULTURAL LIME AT RATES RECOMMENDED BY THE LOCAL COUNTY EXTENSION OFFICE BASED ON SOIL ANALYSIS RESULTS.
- IF DEEMED NECESSARY, THE CONTRACTOR SHALL CONSTRUCT ADDITIONAL BMPs AS DIRECTED BY THE OWNER TO REDUCE THE LIKELIHOOD OF BIE EROSION.
- "MANUAL FOR EROSION AND SEDIMENTATION CONTROL IN GEORGIA, 2016 EDITION."
- EROSION CONTROL MEASURES SHALL BE MAINTAINED AT ALL TIMES. IF FULL IMPLEMENTATION OF THE EROSION AND SEDIMENTATION CONTROL SHALL BE IMPLEMENTED TO CONTROL OR TREAT THE SEDIMENT SOURCE.
- THE ESCAPE OF SEDIMENT FROM THE SITE SHALL BE PREVENTED BY THE INSTALLATION OF EROSION CONTROL MEASURES AND PRACTICES PRIOR TO OR CONCURRENT WITH LAND DISTURBING ACTIVITIES.
- ANY DISTURBED AREA LEFT EXPOSED FOR A PERIOD GREATER THAN 14 DAYS SHALL BE STABILIZED WITH MULCH OR TEMPORARY SEEDING.
- 24 HOUR CONTACT: BEN PERCE, PE (912) 564-7744
benperce@glcncounty-georgia.gov
- OWNER/ PRIMARY PERMITTEE: GLYNN COUNTY PUBLIC WORKS
1000 W. BROADWAY
BRANSWICK, GA 31520
(912) 564-7744
- ALL TEMPORARY EROSION CONTROL MEASURES SHALL BE REMOVED BY THE CONTRACTOR UPON CONTRACT COMPLETION AS DIRECTED BY THE OWNER.
- VELOCITY DISPERSION DEVICES SHALL BE PLACED AT DISCHARGE LOCATIONS AND ALONG THE LENGTH OF THE OUTLET STRUCTURE TO A DOWNSTREAM WATER COURSE. THE CONTRACTOR IS RESPONSIBLE FOR THE PROPER INSTALLATION AND TIMELY MAINTENANCE OF BMPs. ALSO, THE CONTRACTOR IS TO KEEP BMPs IN GOOD AND EFFECTIVE OPERATING CONDITION UP TO RINAL STABILIZATION AND APPROVAL BY THE OWNER.
- SILT FENCE SHALL BE INSTALLED ON THE DOWN SLOPE SIDE OF ALL DISTURBANCES AS SHOWN ON THE PLANS.
- AMENDMENTS OR REVISIONS TO THE SOIL EROSION AND SEDIMENTATION CONTROL PLAN WHICH HAVE A NEGATIVE EFFECT ON BMPs WITH A HYDRAULIC COMPONENT MUST BE CERTIFIED BY THE DESIGN PROFESSIONAL.
- IMPACTS TO WETLANDS AND STATE WATERS ARE NOT EXPECTED DUE TO CONSTRUCTION ACTIVITIES.
- THE RECEIVING WATERS FOR THE PROPOSED PROJECT IS ST. SIMONS SOUND. ALL WETLANDS WITHIN 200 FEET OF THE PROJECT SITE HAVE BEEN DESIGNATED. THIS PROJECT IS NOT LOCATED WITHIN 1 LINEAR MILE UPSTREAM OF A 303(d) LISTED STREAM.
- CONSTRUCTION ACTIVITIES ARE LOCATED WITHIN 50 FEET OF WATERS OF THE STATE.
- EROSION, SEDIMENTATION, AND POLLUTION CONTROL PLAN IN COMPLIANCE WITH WASTE DISPOSAL AND SANITARY REGULATIONS DURING AND AFTER CONSTRUCTION ACTIVITIES HAVE BEEN COMPLETED.
- THE DESIGN PROFESSIONAL WHO PREPARED THE ESPOC PLAN IS TO INSPECT THE INSTALLATION OF INITIAL SEDIMENT STORAGE REQUIREMENTS AND PERMITTER CONTROL BMPs WITHIN 7 DAYS AFTER INSTALLATION.

GENERAL PROJECT ACTIVITY NARRATIVE

THE PROJECT CONSISTS OF UPGRADING STORMWATER INFRASTRUCTURE AS WELL AS PAVING, CURB AND GUTTER AND OTHER SURFACE IMPROVEMENTS TO IMPROVE STORMWATER RUN-OFF CAPACITY TO ST. SIMONS SOUND OUTFALL.

SOURCES OF POLLUTION

POTENTIAL SOURCES OF POLLUTION TO STORMWATER MAY INCLUDE MACHINERY, VEHICLES, TRASH AND DEBRIS, SANITARY FACILITIES, ETC.

OFF-SITE VEHICLE TRACKING AND WASHDOWN

CONTRACTOR SHALL NOT BE PERMITTED TO LEAVE SITE WITHOUT PROPER SEDIMENT REMOVAL FROM VEHICLE TRACKS. EQUIPMENT, ESPECIALLY CONCRETE OR ASPHALT TRUCKS, CONCRETE MIXER CHUTES, HOPPERS, AND TOOLS SHALL NOT BE WASHED OR CLEANED OUT IN THE PROJECT AREA, EXCEPT IN AREAS WHERE UNUSED TOOLS ARE TO BE STORED FROM ENTERING WATERWAYS. WASHOUT OF THE DRAINAGE THE CONSTRUCTION SITE IS PROHIBITED.

SANITARY WASTES

A MINIMUM OF ONE PORTABLE SANITARY UNIT MUST BE PROVIDED FOR TEN WORKERS ON THE PROJECT SITE. ALL SANITARY WASTE WILL BE COLLECTED FROM THE PORTABLE UNITS A MINIMUM OF ONE TIME PER WEEK BY A LICENSED PORTABLE FACILITIES PROVIDER IN COMPLIANCE WITH LOCAL AND STATE REGULATIONS. ALL SANITARY WASTE UNITS SHOULD BE LOCATED IN AN AREA WHERE THE LIKELIHOOD OF THE UNIT CONTRIBUTING TO STORMWATER DISCHARGE IS NEGLIGIBLE.

SEDIMENT STORAGE

THIS PROJECT IS A LINEAR INFRASTRUCTURE PROJECT IN A DEVELOPED AREA OF ST. SIMONS ISLAND, GA. A TEMPORARY (OR PERMANENT) SEDIMENT BASIN IS NOT FEASIBLE IN THE PROJECT AREA. INLET SEDIMENT TRAPS (IS&P) AND BS&P BMPs SHALL BE IMPLEMENTED AND MAINTAINED TO MINIMIZE THE SEDIMENT RUNOFF FROM THE PROJECT AREA. THE CONTRACTOR SHALL BE RESPONSIBLE TO PROVIDE THE NECESSARY 5' C.T. OF STORAGE PER ACRE DRAINED. SEE CALCULATION AS FOLLOWS.

SEDIMENT STORAGE CALCULATION

INLET SEDIMENT TRAP (IS&P) CALCULATIONS

DIAMETER OF INLET SEDIMENT TRAP (ft)	8
AREA OF SEDIMENT TRAP (SQ. FT)	50
VOLUME OF SEDIMENT STORAGE (CU. FT)	402
CU. FT. TO C.Y.	14.895
TOTAL NUMBER SEDIMENT TRAPS	8
TOTAL STORAGE AREA - INLET SEDIMENT TRAPS (C.Y.)	119

TOTAL AVAILABLE STORAGE SILT FENCE (SIS2-P) (C.Y.) TS

TOTAL DISTURBED AREA FACT "DA"
REQUIRED SEDIMENT STORAGE (C.Y.) RS
EXCESS OR (SHORTAGE) STORAGE (C.Y.)

REQUIRED SEDIMENT STORAGE (C.Y.) RS	0.9	TD=119 C.Y./AC
EXCESS OR (SHORTAGE) STORAGE (C.Y.)	60	TS = 119

UNIFORM CODE

STRUCTURAL PRACTICES

CODE	PRACTICE	DETAIL	MAP SYMBOL	DESCRIPTION
SUP	NET SHEET PILE WALL			Temporary temporary protection for disturbed areas. A sheet pile wall is used to retain a slope and prevent erosion. The excavated area will be backfilled with suitable soil. The excavated area will be backfilled with suitable soil. The excavated area will be backfilled with suitable soil.
SI	STORMWATER OUTLET PROTECTION			A panel or short section of flap, channel or grate is installed over the stormwater outlet to prevent debris from entering the outlet.
TP	TOPSOILING			The practice of bringing off the more fertile soil, from one area of construction to another area after completion of construction activities.

VEGETATIVE PRACTICES

CODE	PRACTICE	DETAIL	MAP SYMBOL	DESCRIPTION
DST	DESIGNED AREA (WITH TOP SOILING)			Establishing temporary protective for disturbed areas. A topsoiling operation is performed to improve soil structure and fertility. A topsoiling operation is performed to improve soil structure and fertility.
DS2	DESIGNED AREA (WITH TOP SOILING AND SEEDING)			Establishing a temporary protective cover with topsoiling and seeding. A topsoiling and seeding operation is performed to improve soil structure and fertility. A topsoiling and seeding operation is performed to improve soil structure and fertility.
DS3	DESIGNED AREA (WITH TOP SOILING AND SEEDING AND MULCH)			Establishing a temporary protective cover with topsoiling, seeding, and mulch. A topsoiling, seeding, and mulch operation is performed to improve soil structure and fertility. A topsoiling, seeding, and mulch operation is performed to improve soil structure and fertility.
DU	NET SHEET PILE WALL ON DISTURBED AREAS			Establishing temporary protection for disturbed areas. A sheet pile wall is used to retain a slope and prevent erosion. The excavated area will be backfilled with suitable soil. The excavated area will be backfilled with suitable soil.

PROJECT NO. 0809 214
DESIGNED BY B.L.N.
DATE 04/2019

PROJECT NO. 0809 214
DESIGNED BY B.L.N.
DATE 04/2019

SCALE AS SHOWN

EC-1

SHEET 13 OF 14

PROJECT NO. 0809 214
DESIGNED BY B.L.N.
DATE 04/2019

PROJECT NO. 0809 214
DESIGNED BY B.L.N.
DATE 04/2019

SCALE AS SHOWN

EC-1

SHEET 13 OF 14

PROJECT NO. 0809 214
DESIGNED BY B.L.N.
DATE 04/2019

PROJECT NO. 0809 214
DESIGNED BY B.L.N.
DATE 04/2019

SCALE AS SHOWN

EC-1

SHEET 13 OF 14

PROJECT NO. 0809 214
DESIGNED BY B.L.N.
DATE 04/2019

PROJECT NO. 0809 214
DESIGNED BY B.L.N.
DATE 04/2019

SCALE AS SHOWN

EC-1

SHEET 13 OF 14

PROJECT NO. 0809 214
DESIGNED BY B.L.N.
DATE 04/2019

PROJECT NO. 0809 214
DESIGNED BY B.L.N.
DATE 04/2019

SCALE AS SHOWN

EC-1

SHEET 13 OF 14

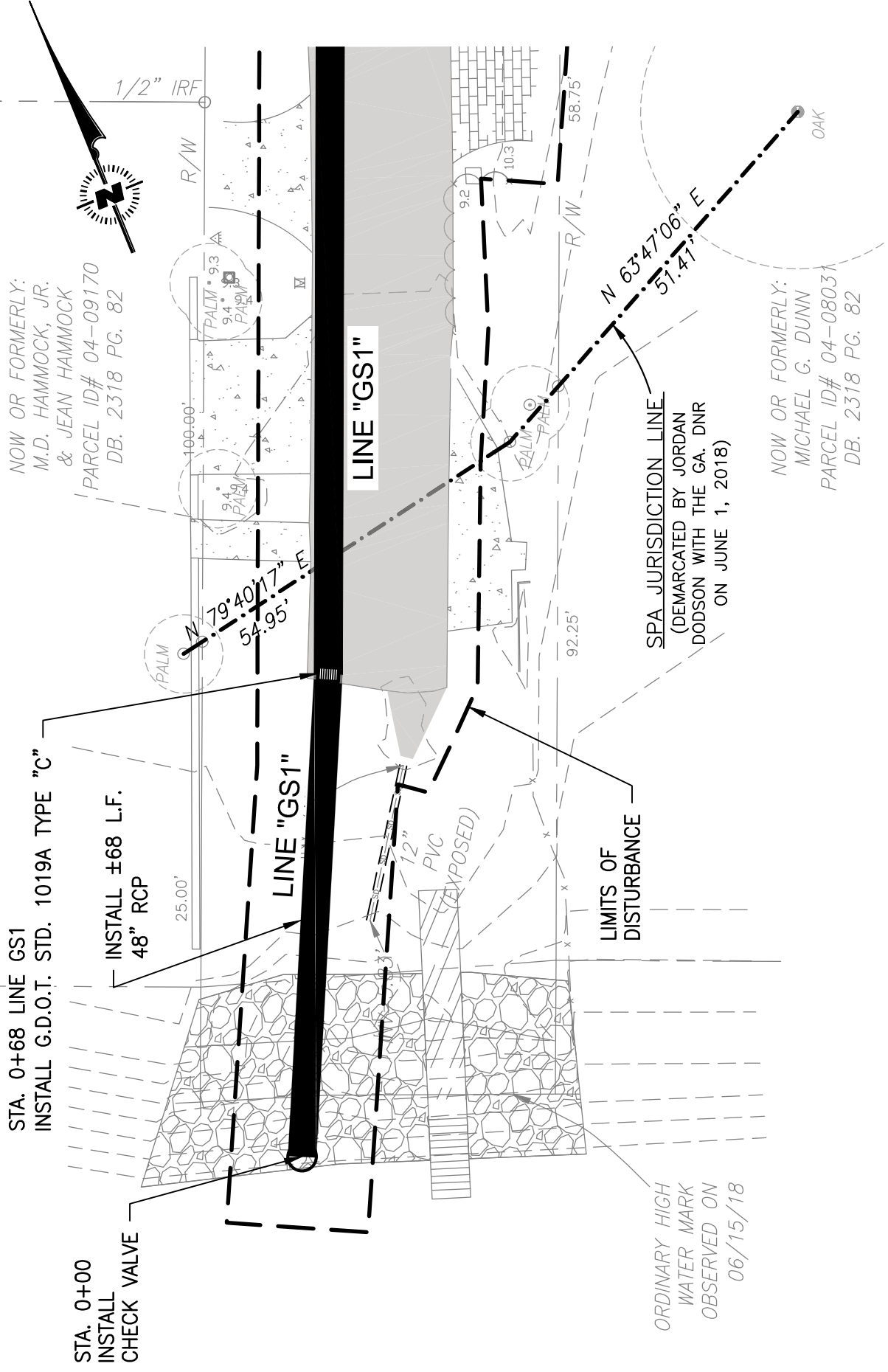
PROJECT NO. 0809 214
DESIGNED BY B.L.N.
DATE 04/2019

PROJECT NO. 0809 214
DESIGNED BY B.L.N.
DATE 04/2019

SCALE AS SHOWN

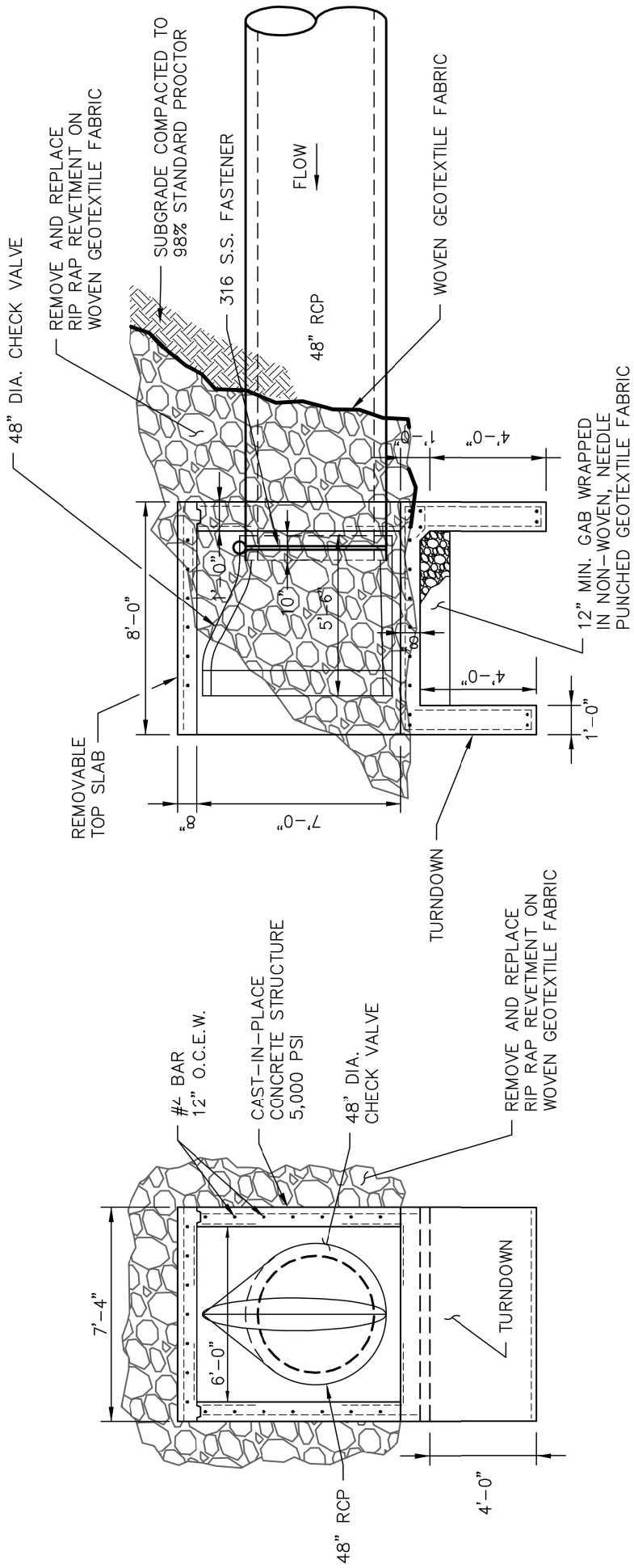
EC-1

SHEET 13 OF 14

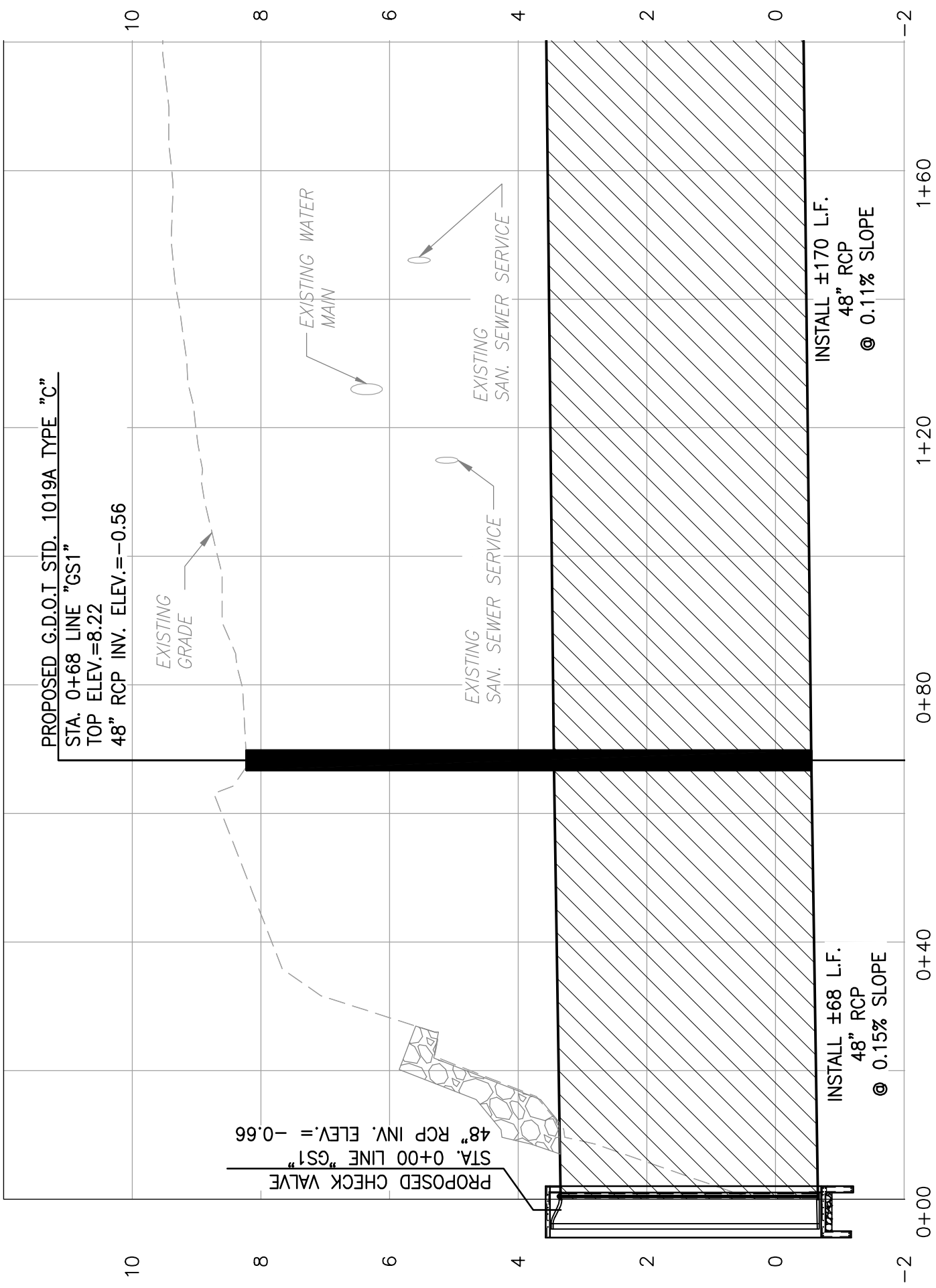


STORM DRAINAGE PLAN - GEORGIA STREET OUTFALL

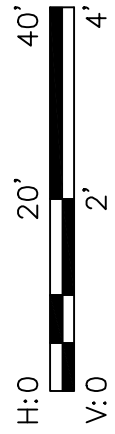
SCALE: 1"=20'

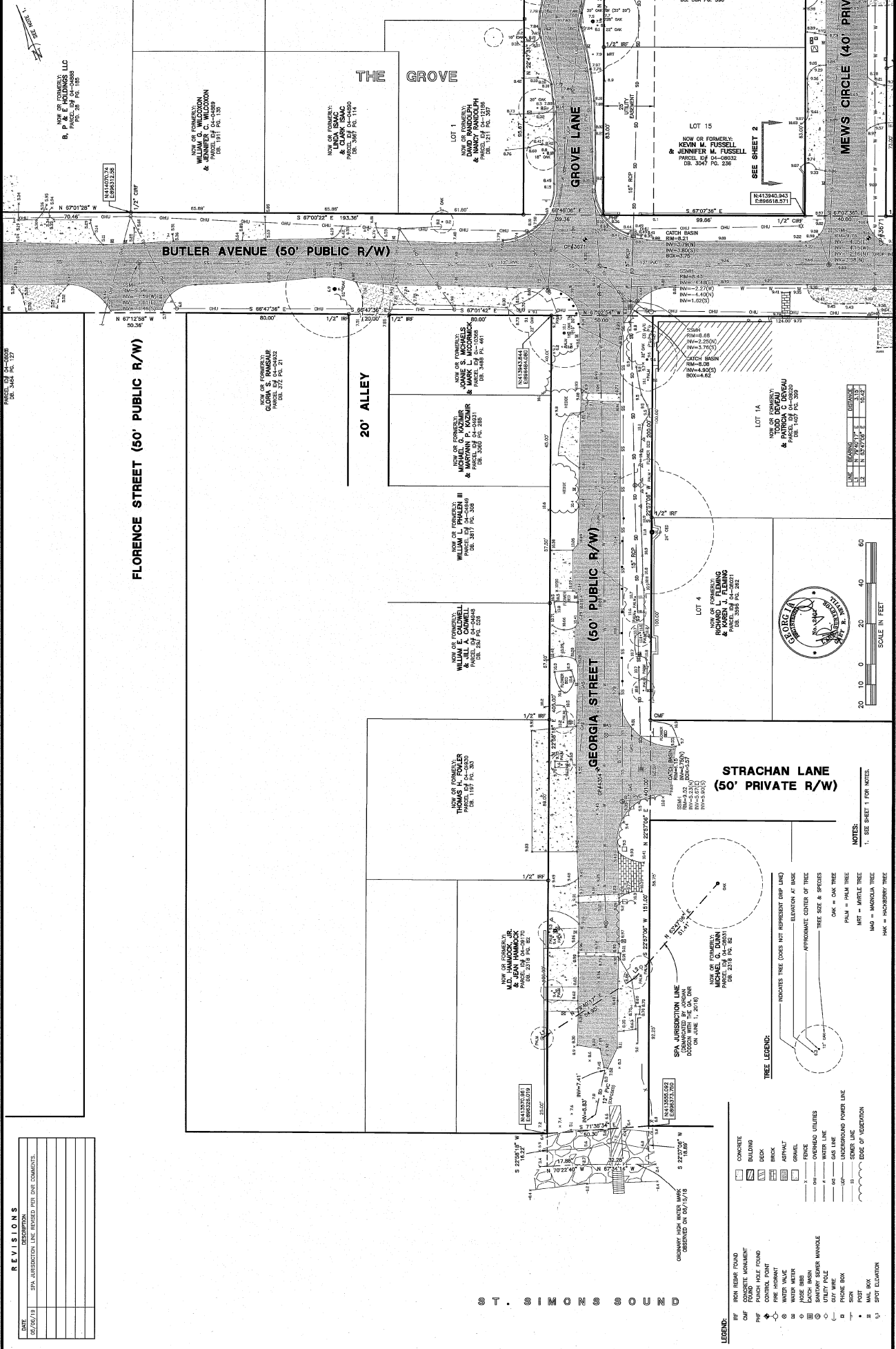


1
 DETAIL - GEORGIA STREET OUTFALL STRUCTURE
 SCALE: N.T.S.



STORM DRAINAGE PROFILE - GEORGIA STREET OUTFALL "GS1"





REVISIONS

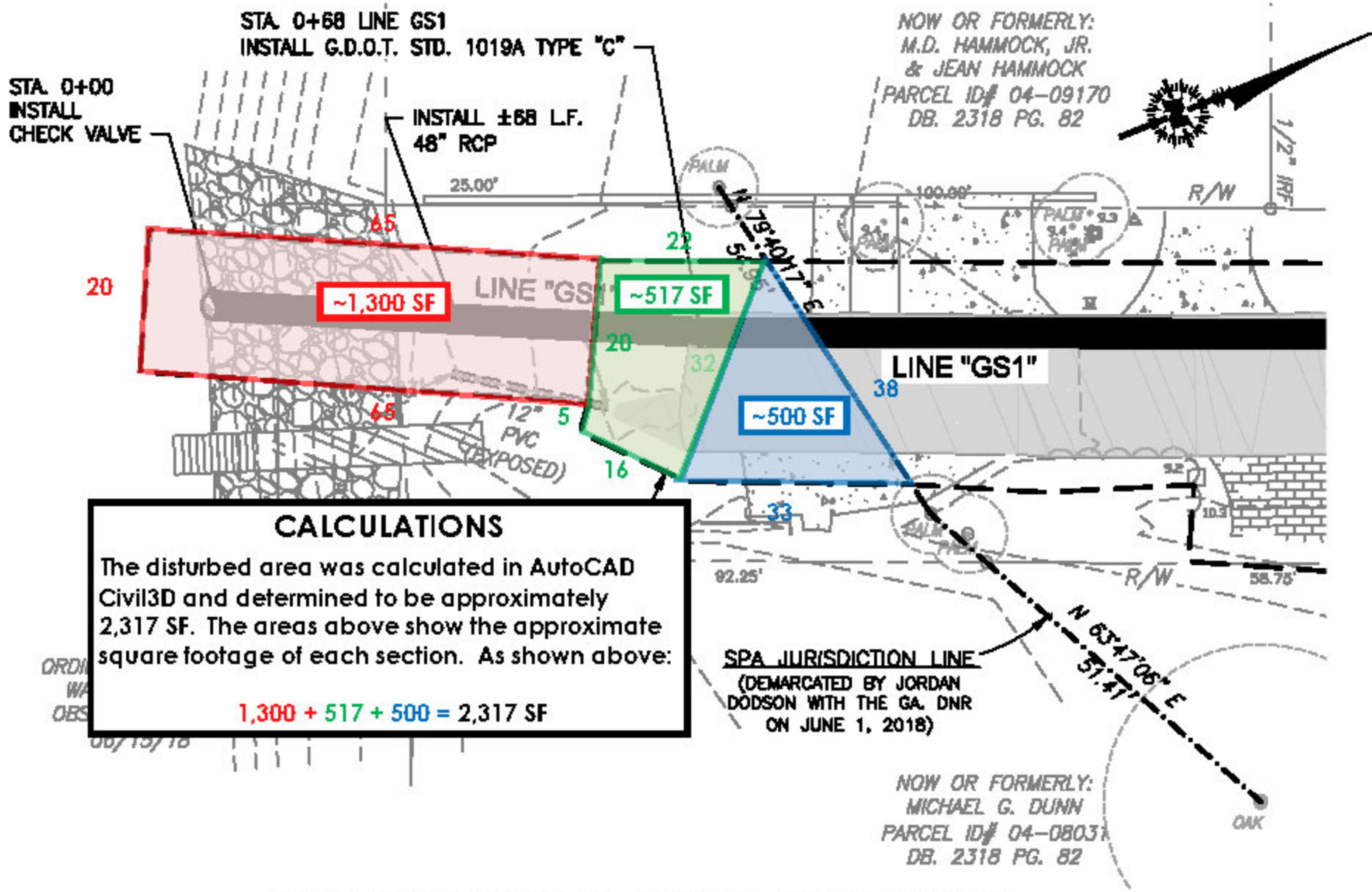
DATE	DESCRIPTION
12/26/18	SPA JURISDICTION LINE REVISED FOR DME COMMENTS.

STRACHAN LANE (50' PRIVATE R/W)

NOTES:
1. SEE SHEET 1 FOR NOTES.

- TREE LEGEND:**
- INDICATES TREE (DOES NOT REPRESENT GRIP LINE)
 - APPROXIMATE CENTER OF TREE
 - TREE SIZE & SPECIES
 - OK = OAK TREE
 - PA = PALM TREE
 - MT = MAPLE TREE
 - MA = MANCILLA TREE
 - HK = HOKBERRY TREE

- LEGEND:**
- CONCRETE
 - BUILDING
 - BRICK
 - ASPHALT
 - GRAVEL
 - FORWARDED UTILITIES
 - WATER LINE
 - GAS LINE
 - UNDERGROUND POWER LINE
 - SEWER LINE
 - MAIL BOX
 - SPOT ELEVATION



CALCULATIONS

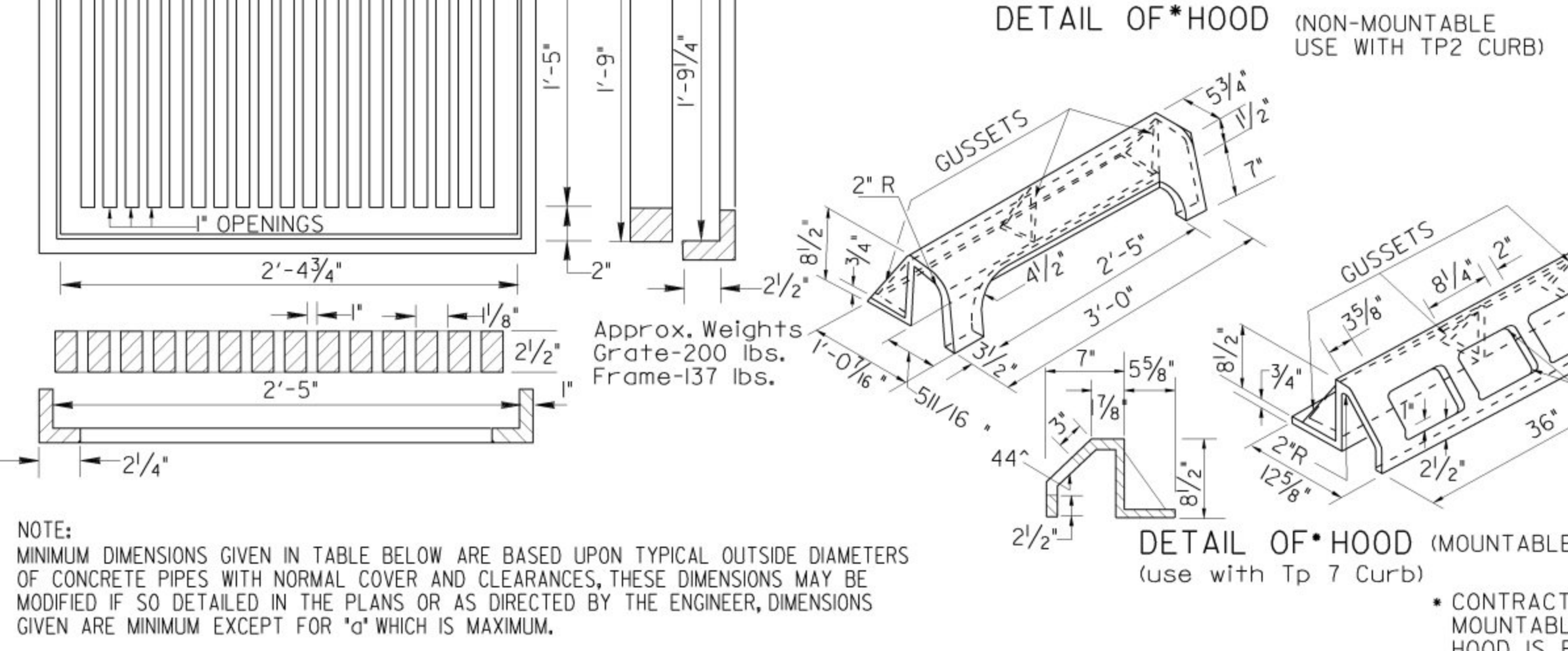
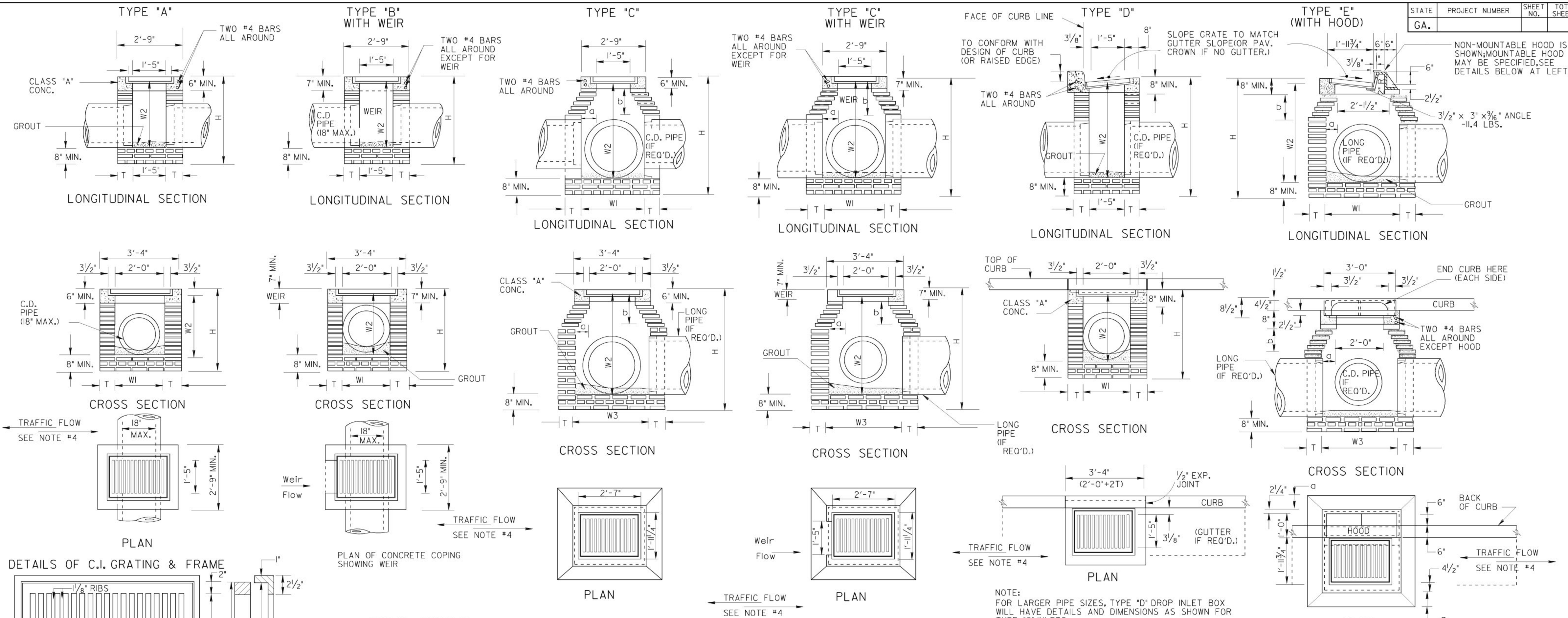
The disturbed area was calculated in AutoCAD Civil3D and determined to be approximately 2,317 SF. The areas above show the approximate square footage of each section. As shown above:

$1,300 + 517 + 500 = 2,317 \text{ SF}$

STORM DRAINAGE PLAN - GEORGIA STREET OUTFALL

SCALE: 1"=20'

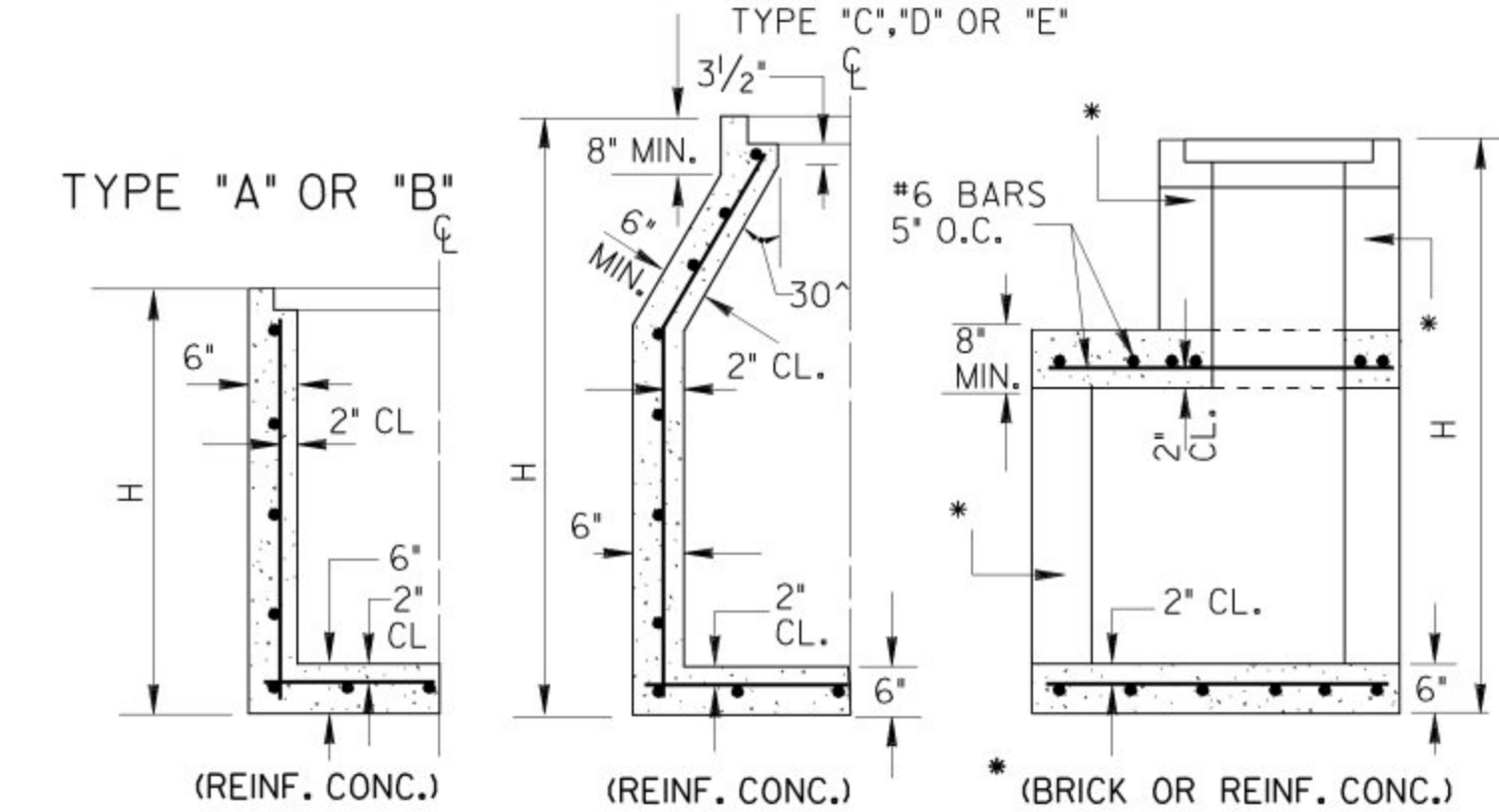
STATE	PROJECT NUMBER	SHEET NO.	TOTAL SHEETS
GA.			



SPECIAL NOTE:
STANDARD 1019A INLETS ARE FOR USE AT LOW POINTS & WHERE HYDRAULIC LOW CAPACITY GRATES ARE SUFFICIENT. WHERE HIGHER CAPACITY GRATES ARE NEEDED ON A CONTINUOUS GRADE, STANDARD 1019B IS RECOMMENDED.

NOTE:
DETAILS NOT SHOWN FOR CONSTRUCTION ALTERNATES WILL BE SIMILAR TO THAT SHOWN FOR BRICK MASONRY.

CONSTRUCTION ALTERNATES



NOTE: CONCRETE WALLS WILL BE REINFORCED WITH #4 BARS 12" O.C. BOTH WAYS, BUT WHERE H IS OVER 9 FT., AND PIPE IS OVER 30" I.D., THE HORIZONTAL STEEL, WHICH IS MORE THAN 9 FT. DEEP WILL BE INCREASED TO 6" SPACINGS. 6" CONC. BOTTOM SLABS WILL BE REINFORCED WITH #4 BARS 12" O.C. BOTH WAYS.

NOTE: FOR PRECAST ALTERNATES, SEE STD. 1019-A PRECAST AND/OR STD. 1040 PRECAST AND BUILT-IN-PLACE COMPONENTS MAY BE USED IN COMBINATIONS WHICH PROVIDE PROPER FITS AND STRUCTURAL ADEQUACY.

- GENERAL NOTES:**
- SPECIFICATIONS: GEORGIA STANDARD AND CURRENT EDITION, AND SUPPLEMENTS THERETO.
 - 1/2" EXPANSION JOINT WILL BE REQUIRED WHERE RIGID PAVEMENT, CONCRETE SIDEWALK OR CONCRETE GUTTER MEETS DROP INLETS.
 - ALIGNMENT, NUMBER AND SIZES OF PIPES SHOWN ARE ONLY TYPICAL, SEE PLANS FOR ACTUAL PIPE CULVERT REQUIREMENTS.
 - ALL TYPE DROP INLETS WILL BE CONSTRUCTED (AS SHOWN), SO THAT THE GRATE BARS ARE PERPENDICULAR TO THE FLOW OF TRAFFIC EXCEPT ON LIMITED ACCESS PROJECTS OR WHERE BICYCLES ARE PROHIBITED.
 - BRICK MASONRY WITH CLASS "A" CONC. TOP PORTION IS SHOWN AS STANDARD CONSTRUCTION WITH ALTERNATES PERMITTED AS SHOWN, BOTTOM SLAB MAY BE 8" MIN. NON-REINFORCED CONCRETE, 8" BRICK OR 6" MIN. REINFORCED CONCRETE, SEE APPLICABLE STANDARDS FOR ALTERNATE PRECAST CONSTRUCTION.

TABLE OF MINIMUM DIMENSIONS FOR DROP INLETS

D	TYPES "A" or "B" BRICK OR REINF. CONC.			TYPE "C" OR "D" (BRICK)						TYPE "E" (BRICK)						TYPE "C", "D" OR "E" (REINFORCED CONCRETE)						
	W1	W2	H(min)	W1	W2	W3	a (MAX.)	b	H(min.)	W1	W2	W3	a (MAX.)	b	H(min.)	W1 type "C"	W1 type "E"	W2	W3	a (MAX.)	b	H(min.)
15"	2'-0"	2'-7"	3'-3/2"	2'-2/8"	2'-11"	2'-9/8"	0'-4/8"	0'-7/8"	3'-9/2"	3'-2/8"	3'-1"	3'-0/8"	0'-7/8"	1'-1/8"	3'-11/2"	2'-0"	2'-1"	2'-7"	2'-0"	3/2"	6"	3'-6"
18"	2'-0"	2'-10"	3'-1"	2'-2/8"	3'-2/2"	2'-9/8"	0'-4/8"	0'-7/8"	4'-1"	3'-2/8"	3'-4/2"	3'-0/8"	0'-7/8"	1'-1/8"	4'-1"	2'-0"	2'-1"	3'-0"	2'-0"	3/2"	6"	3'-11"
24"	~	~	~	2'-8/8"	3'-3/8"	3'-3/8"	0'-7/8"	0'-7/8"	4'-9"	3'-2/8"	3'-11/2"	3'-0/8"	0'-7/8"	1'-1/8"	4'-8/4"	2'-8"	2'-9"	3'-8"	2'-6"	6/2"	11/4"	4'-7"
30"	~	~	~	3'-7/4"	4'-0/4"	3'-10/8"	1'-0/8"	1'-9"	5'-10"	3'-5/2"	4'-8/8"	3'-4"	0'-8"	1'-1/8"	5'-6/8"	3'-4"	3'-6"	4'-9"	3'-0"	9/2"	16/2"	5'-10"
36"	~	~	~	4'-1/8"	6'-0/8"	4'-8/8"	1'-4/8"	2'-2/4"	6'-11/8"	3'-11/2"	5'-8/8"	3'-10"	0'-11"	1'-7/8"	6'-7/8"	3'-10"	4'-0"	5'-10"	3'-9"	1'-2"	2'-0"	6'-10"
42"	~	~	~	4'-5"	7'-1/4"	4'-5"	1'-6"	2'-7/8"	8'-0/4"	4'-6/2"	7'-5/8"	4'-5"	1'-2/2"	2'-1/8"	8'-4/8"	4'-5"	4'-6"	7'-0"	4'-3"	1'-9/2"	2'-5/2"	7'-11"
48"	~	~	~	5'-0"	8'-2/4"	5'-7"	1'-9/2"	3'-1/4"	9'-1/4"	5'-1/2"	8'-6/8"	5'-0"	1'-6"	2'-7/8"	9'-5/8"	5'-0"	5'-0"	8'-2"	5'-0"	3'-1/2"	3'-1/2"	9'-2"
54"	~	~	~	5'-7"	9'-4"	6'-2"	2'-1"	3'-7/2"	10'-2/2"	5'-8/2"	9'-7/4"	5'-7"	1'-9/2"	3'-1/4"	10'-6/4"	5'-6"	5'-6"	9'-2"	5'-6"	2'-0/2"	3'-6/2"	10'-0"
60"	~	~	~	6'-2"	1'-4/8"	6'-9"	2'-4/2"	4'-1/8"	11'-3/4"	6'-3/2"	10'-8/8"	6'-2"	2'-1"	3'-7/8"	1'-7/8"	6'-0"	6'-0"	10'-3"	6'-0"	2'-3/2"	4'-0"	11'-1"

DEPARTMENT OF TRANSPORTATION
STATE OF GEORGIA

STANDARD DROP INLETS (BUILT-IN-PLACE)

SCALE AS SHOWN REV. & REDR. AUG., 1999

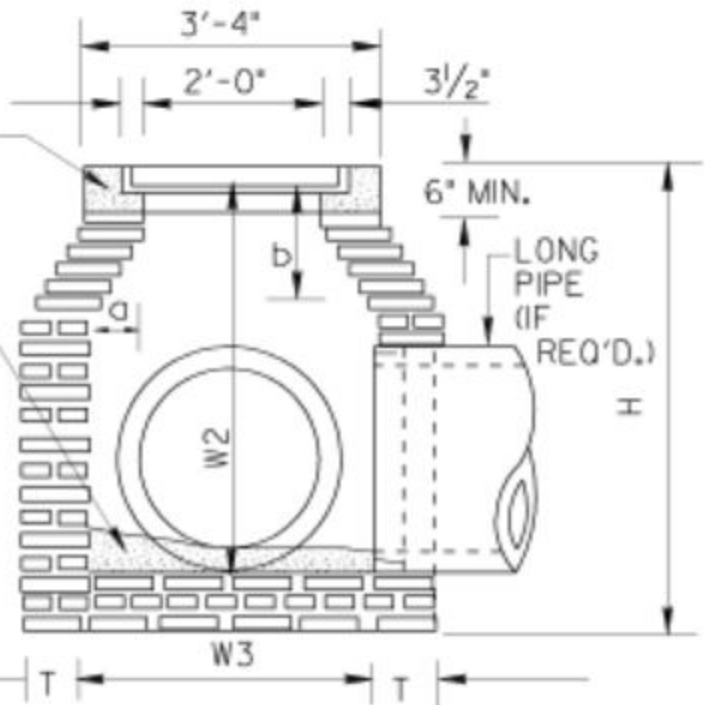
DES. (SUBMITTED) *James L. Kaul*
REV. (APPROVED) *James L. Kaul*
TRA. (APPROVED) *James L. Kaul*
CHK. (APPROVED) *James L. Kaul*

NUMBER 1019A

CLASS 'A'
CONC.

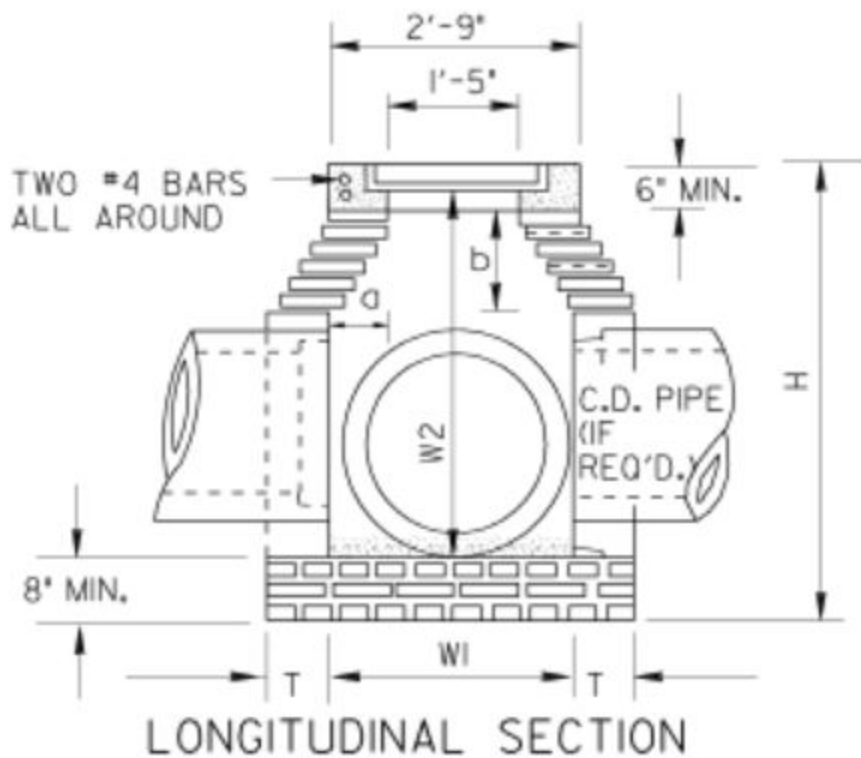
GROUT

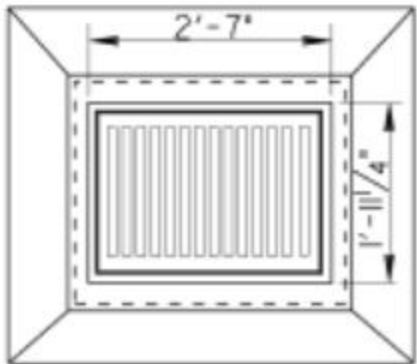
8" MIN.



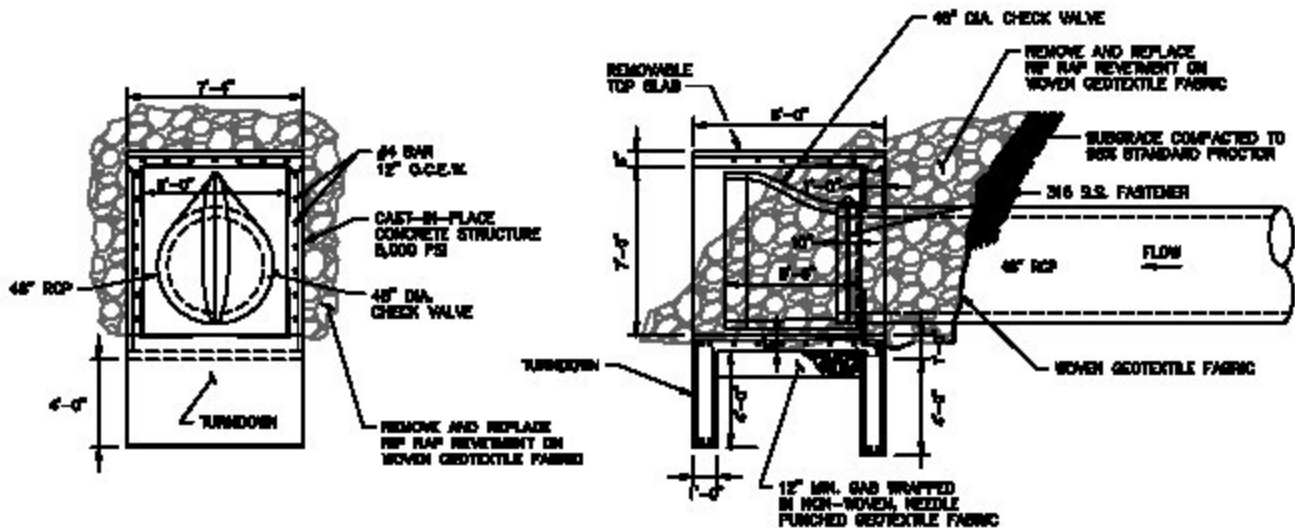
CROSS SECTION

TYPE "C"

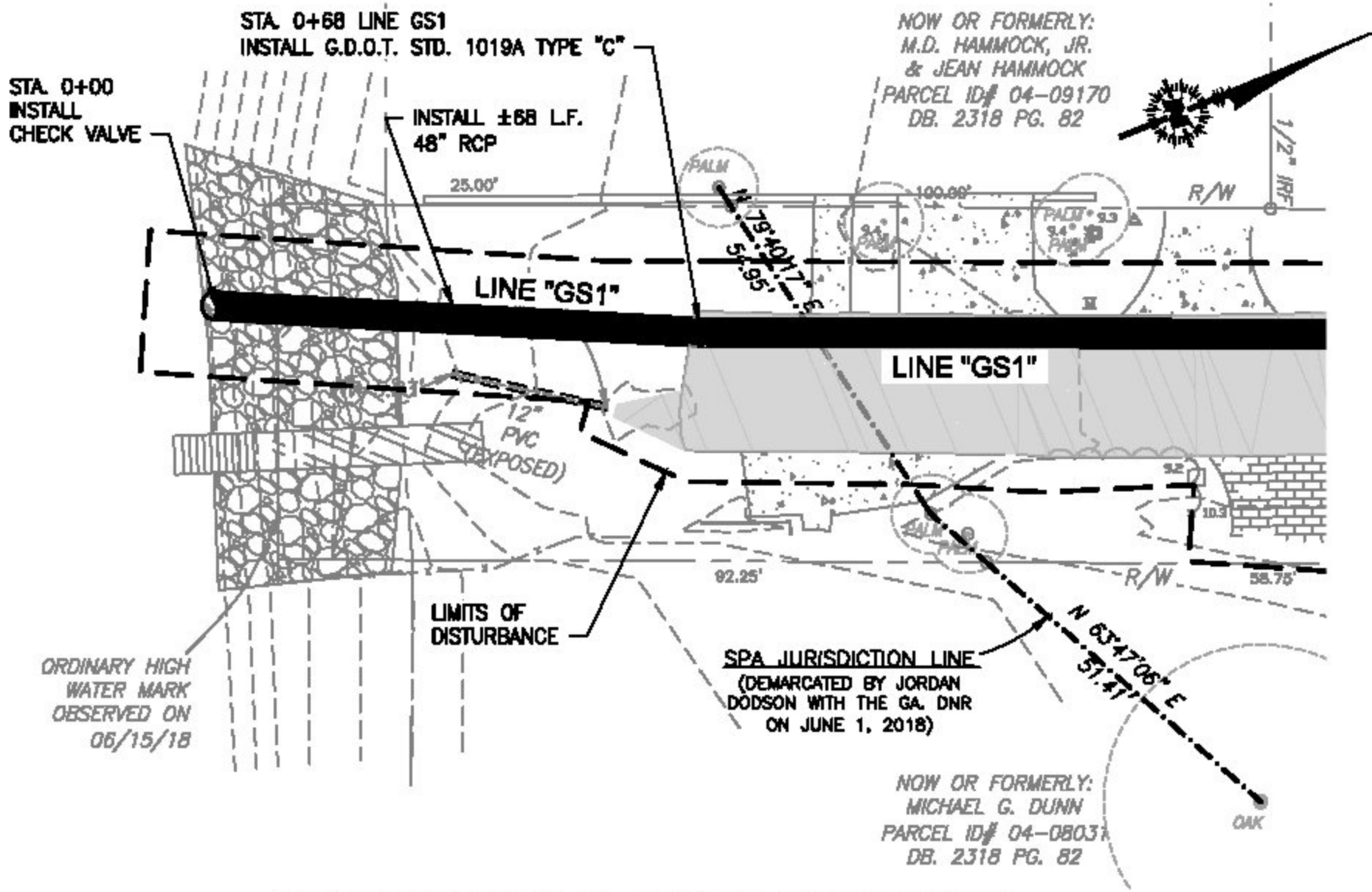




PLAN

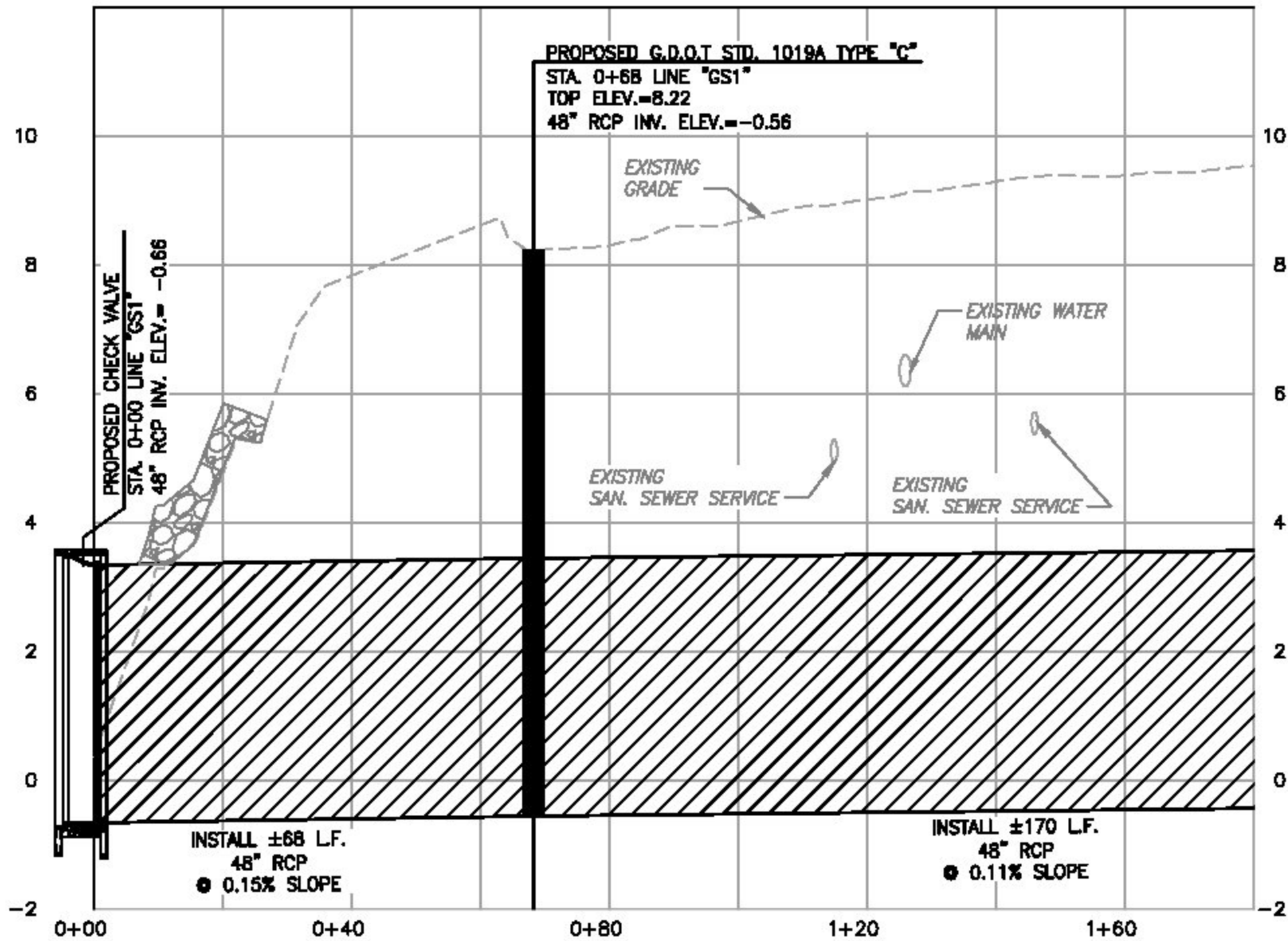


1 DETAIL - GEORGIA STREET OUTFALL STRUCTURE
 SCALE: N.T.S.



STORM DRAINAGE PLAN - GEORGIA STREET OUTFALL

SCALE: 1"=20'



STORM DRAINAGE PROFILE - GEORGIA STREET OUTFALL "GS1"

