

- NOTES:**
1. THE DOCK PLANS SHOWN HEREIN SHALL BE USED ONLY AS AN EXHIBIT FOR DOCK PERMITTING WITH THE GEORGIA DEPARTMENT OF NATURAL RESOURCES. DEPTHS OF THE CHANNEL WERE OBSERVED BY SHUPE SURVEYING COMPANY, P.C.
  2. THE DIAGRAM IS NOT INTENDED TO BE USED FOR CONSTRUCTION DRAWINGS FOR THE DOCK.
  3. STRUCTURAL ENGINEERING PLANS SHOULD BE DESIGNED PRIOR TO DOCK CONSTRUCTION.

Shupe & Co. Inc. 5-27-2020

SCALE: 1" = 20'



**ROBERTS**  
CIVIL ENGINEERING

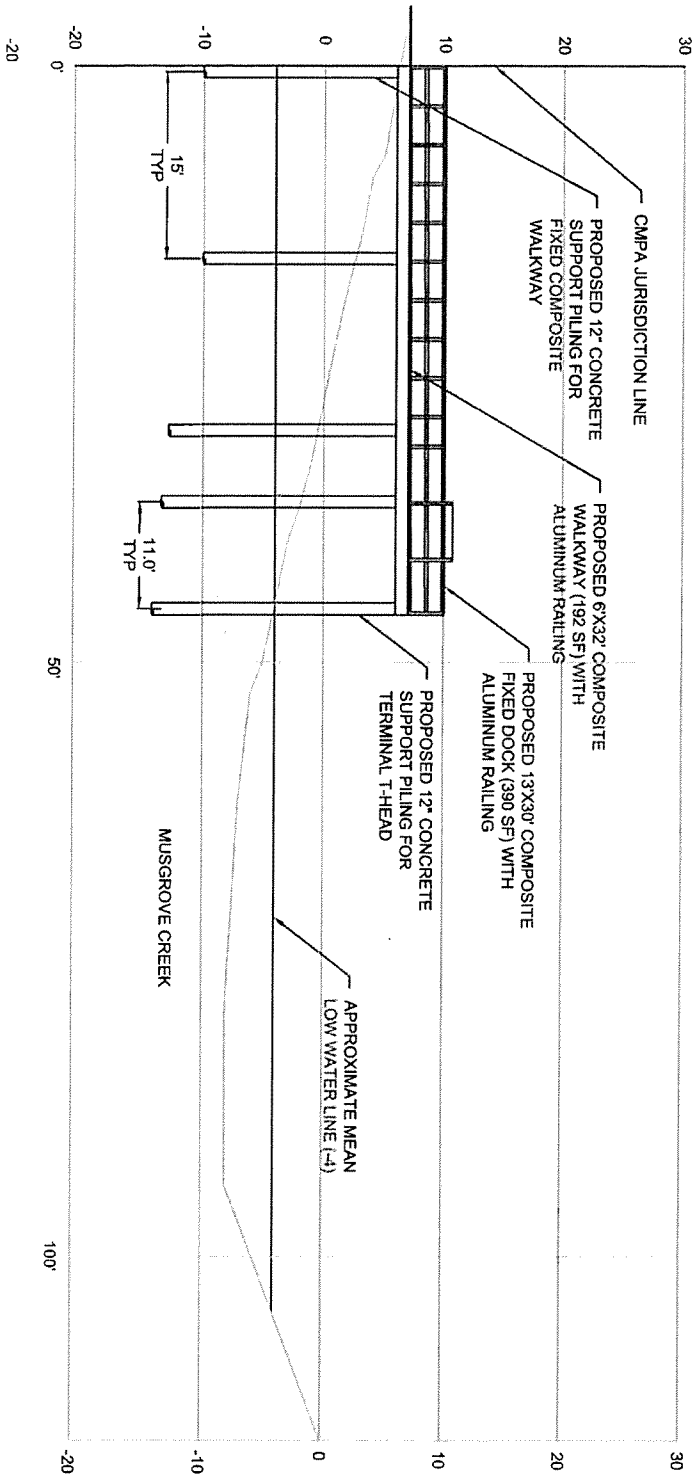
DATE: 2020-03-05  
DRAWN BY: BLH  
CHECKED BY: JDR  
PROJECT NO.: 18090  
SCALE: NTS

**DOCK LAYOUT PLAN  
GUALA PRESERVE  
ST. SIMONS ISLAND, GA**

PREPARED FOR:  
ST. SIMONS LAND TRUST

ROBERTS CIVIL ENGINEERING  
301 SEA ISLAND ROAD, SUITE 10  
ST. SIMONS, GA 31522  
912-638-9681 OFFICE  
912-289-0339 FAX

RECEIVED



PROFILE VIEW 'A'

NOTES:  
 1. THE DOCK PLANS SHOWN HEREIN SHALL BE USED ONLY AS AN EXHIBIT FOR DOCK PERMITTING WITH THE GEORGIA DEPARTMENT OF NATURAL RESOURCES.

2. THE DEPTHS OF THE CHANNEL WERE OBSERVED IN AUGUST 2017 BY SHUPE SURVEYING COMPANY, P.C.

3. THE DIAGRAM IS NOT INTENDED TO BE USED FOR CONSTRUCTION DRAWINGS FOR THE DOCK.

4. STRUCTURAL ENGINEERING PLANS SHOULD BE DESIGNED PRIOR TO DOCK CONSTRUCTION.

*Stephanie* 5-27-2020



**ROBERTS**  
 CIVIL ENGINEERING

3

DATE: 2020-03-05  
 DRAWN BY: BLH  
 CHECKED BY: JDR  
 PROJECT NO.: 18090  
 SCALE: NTS

**DOCK PROFILE**  
**GALE PRESERVE**  
**ST. SIMONS ISLAND, GA**

PREPARED FOR:  
 ST. SIMONS LAND TRUST

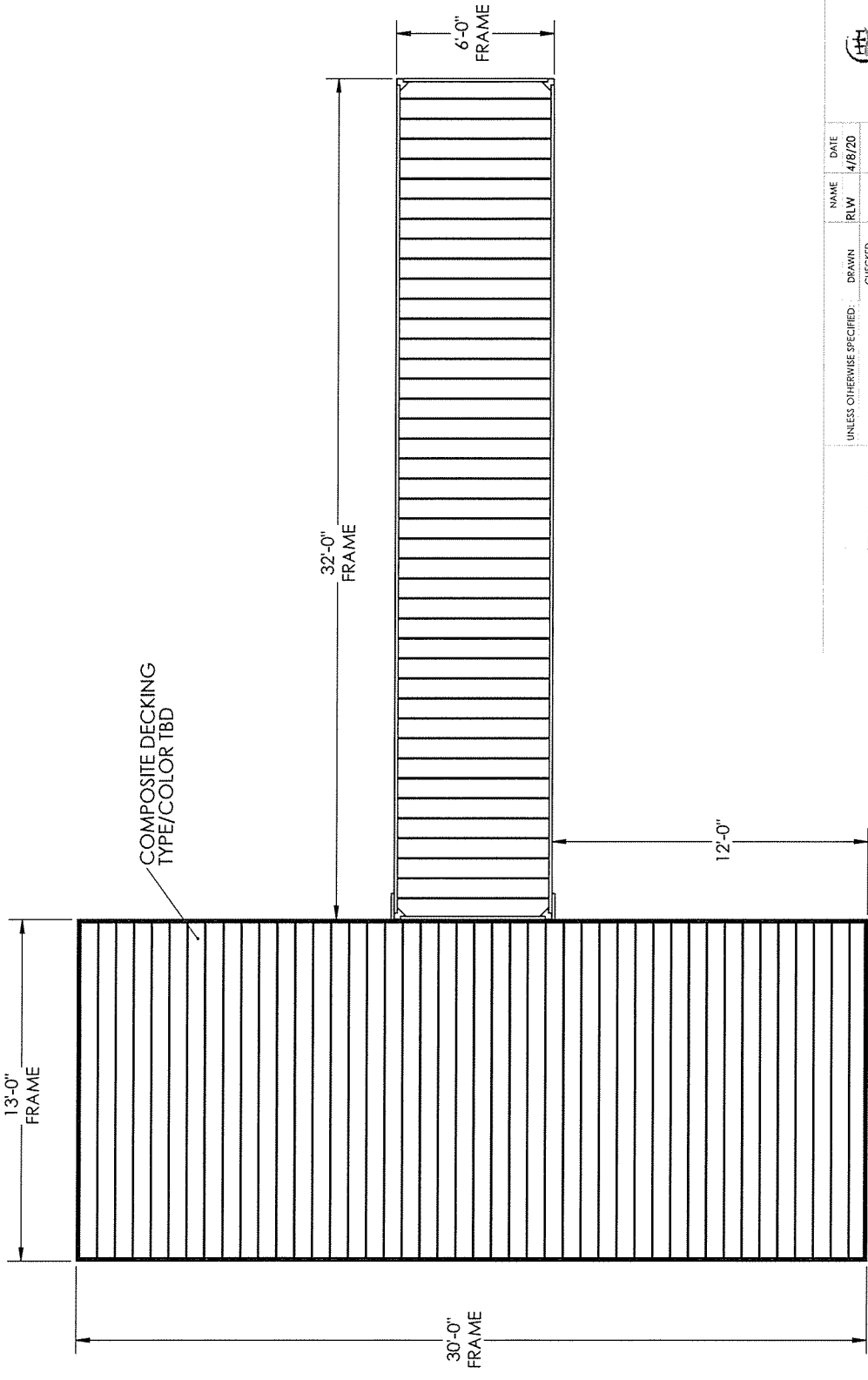
ROBERTS CIVIL ENGINEERING  
 301 SEA ISLAND ROAD, SUITE 10  
 ST. SIMONS, GA 31522  
 912-638-9681 OFFICE  
 912-289-0339 FAX

RECEIVED

JUN 09 20

GA-DNR

1 2 3 4 5 6 7 8

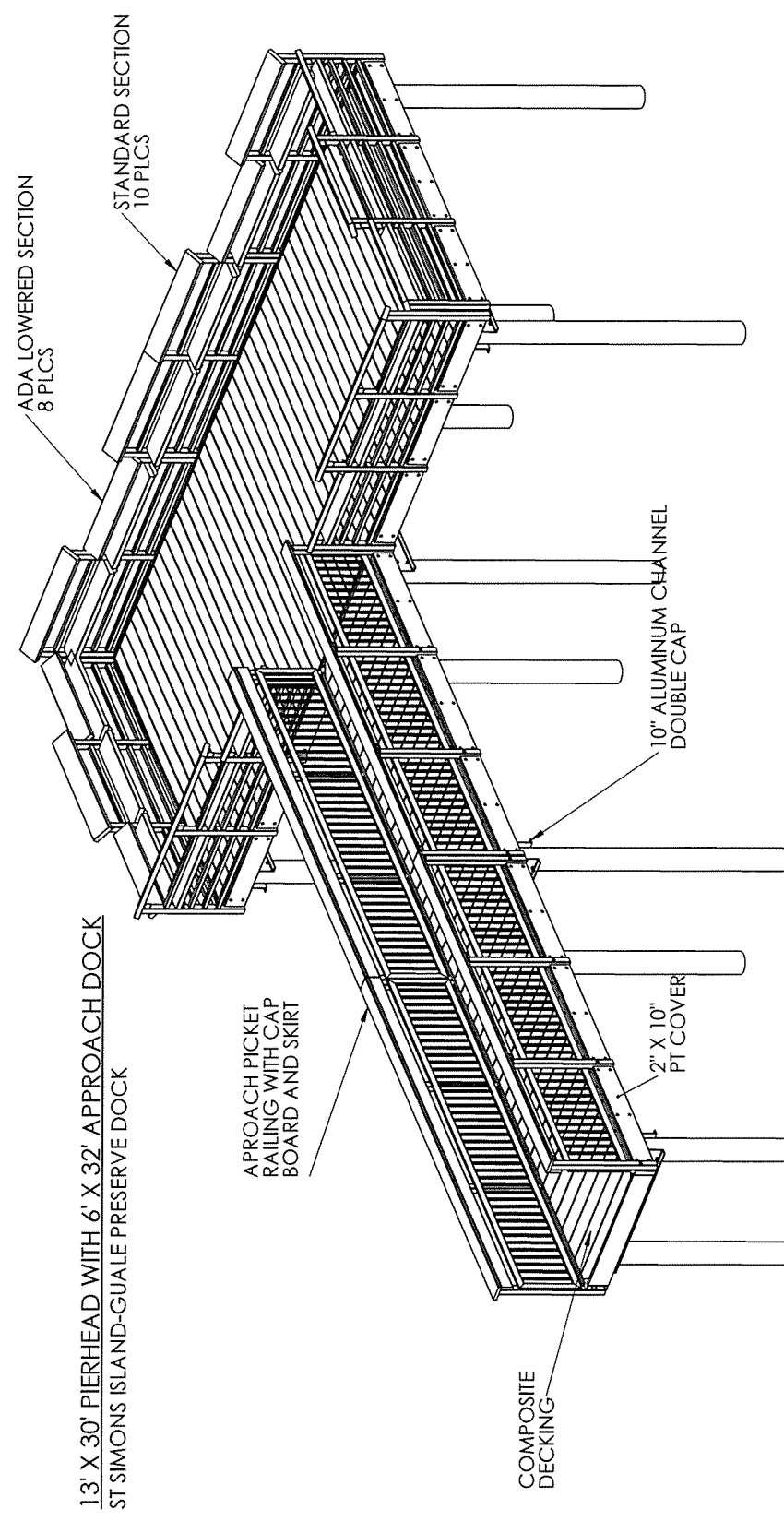


D C B A

		NAME RLW	DATE 4/8/20	TITLE: 13' x 30' Fixed Pier -Prel	
UNLESS OTHERWISE SPECIFIED: DIMENSIONS ARE IN INCHES TOLERANCES FRACTIONAL: ANGULAR: MACH: BEND: ±.5° SURFACE FINISH: ±.06 WELD FACE DECIMAL: ±.05		DRAWN CHECKED ENG APPR MFG APPR O.A. COMMENTS:	SIZE DWG. NO. B SS GUALE PRSV-PH-APCH		REV
INTERPRET GEOMETRIC TOLERANCING PER MATERIAL FINISH		DO NOT SCALE DRAWING		SCALE: 1:48 Weight: SHEET 2 OF 5	
PROPRIETARY AND CONFIDENTIAL THE INFORMATION CONTAINED IN THIS DRAWING IS THE PROPERTY OF CRESCENT EQUIPMENT CO., INC. ANY REPRODUCTION IN PART OR AS A WHOLE WITHOUT THE WRITTEN PERMISSION OF CRESCENT EQUIPMENT CO., INC. IS PROHIBITED.		NEXT ASSY	USED ON	APPLICATION	

1 2 3 4 5 6 7 8

8 7 6 5 4 3 2 1



13' X 30' PIERHEAD WITH 6' X 32' APPROACH DOCK  
ST SIMONS ISLAND-GUALE PRESERVE DOCK

		DATE	4/8/20
NAME	RLW	DRAWN	CHECKED
UNLESS OTHERWISE SPECIFIED:		DIMENSIONS ARE IN INCHES TOLERANCES: FRACTIONAL: MFG APPR. ANGULAR: MACH: BEND ± .5" TWO PLACE DECIMAL ± .01 THREE PLACE DECIMAL ± .005	
COMMENTS: INTERPRET GEOMETRIC TOLERANCING PER:		O.A. DO NOT SCALE DRAWING	
MATERIAL: FINISH:		NEXT ASSY: USED ON: APPLICATION:	
PROPRIETARY AND CONFIDENTIAL THE INFORMATION CONTAINED IN THIS DRAWING IS THE PROPERTY OF ST SIMONS ISLAND-GUALE PRESERVE EQUIPMENT CO., INC. ANY REPRODUCTION IN PART OR AS A WHOLE WITHOUT THE WRITTEN PERMISSION OF ST SIMONS ISLAND-GUALE PRESERVE EQUIPMENT CO., INC. IS PROHIBITED.			
TITLE: 13' x 30' Fixed Pier -Prel SIZE DWG. NO. <b>B</b> ST SIMONS-GUALE PRSRV-PROP		SCALE: 1:48 Weight: SHEET 1 OF 5	