

**BLUFFSIDE AT COUNTRY CLUB CREEK
BLUFFSIDE DOCK PERMITTING
LOCATION MAP**

DATE: OCTOBER 04, 2016 **SCALE: 1"=3500'**
REV: DECEMBER 08, 2016
PROJECT NO. 116220620 **SHEET NO: 2 of 8**

HUSSEY GAY BELL

Established 1958

329 COMMERCIAL DRIVE, SAVANNAH, GA 31406 / T:912.354.4626
SAVANNAH • ATLANTA • CHARLESTON • COLUMBIA
www.husseygaybell.com



SAVANNAH
STATE
UNIVERSITY
COLLEGE

WILMINGTON RIVER

LATITUDE: 32°01'00"N 32.01679°N
LONGITUDE: 81°03'46"W 81.06286°W

SITE

COUNTRY CLUB CREEK

HERB RIVER

HERB RIVER

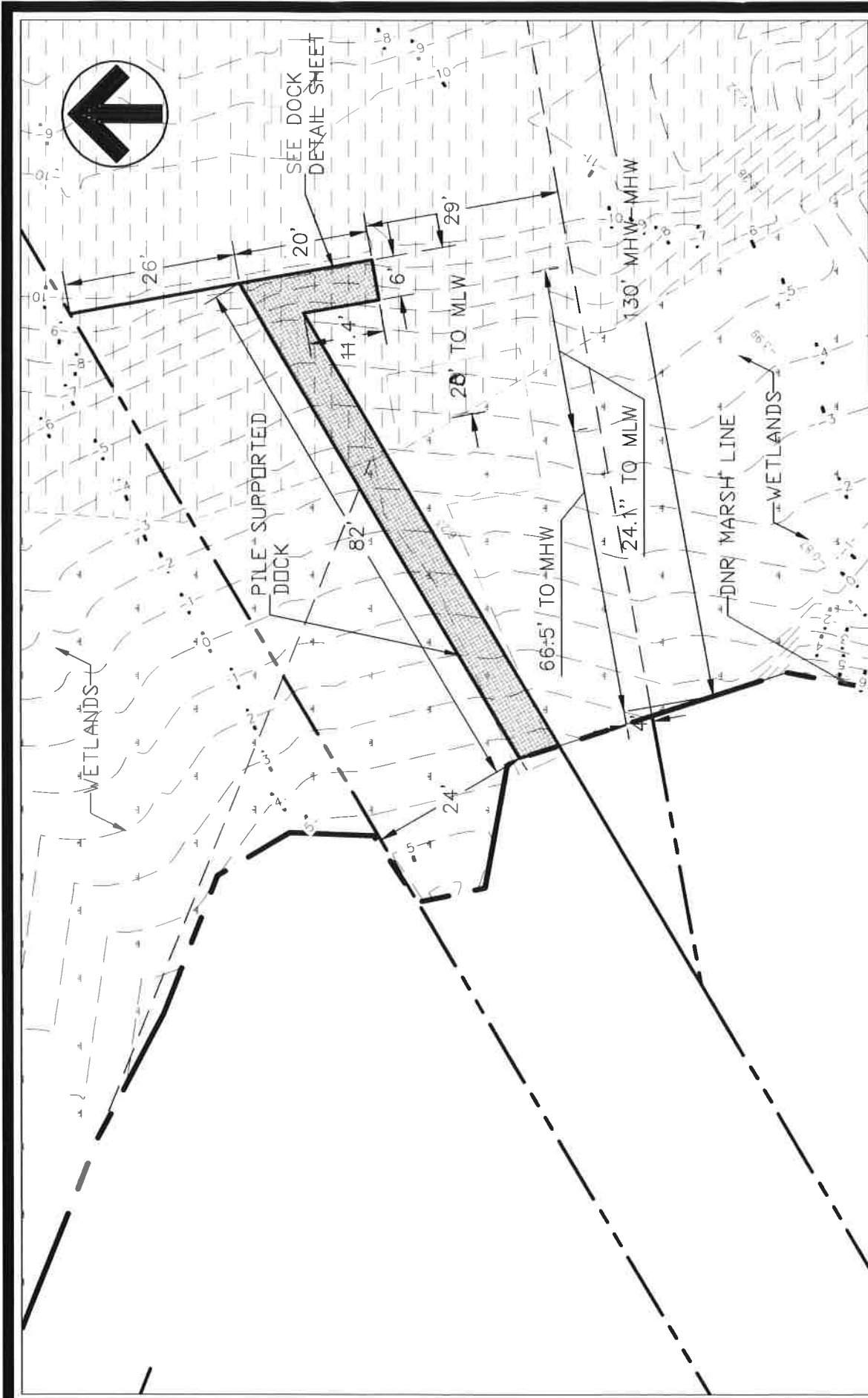
**BLUFFSIDE AT COUNTRY CLUB CREEK
BLUFFSIDE DOCK PERMITTING
GOOGLE EARTH**

DATE: OCTOBER 04, 2016 SCALE: 1"=1000'
REV: DECEMBER 08, 2016
PROJECT NO. 116220620 SHEET NO: 1 of 8

HUSSEY GAY BELL

Established 1958

329 COMMERCIAL DRIVE, SAVANNAH, GA 31406 / T:912.354.4626
SAVANNAH • ATLANTA • CHARLESTON • COLUMBIA
www.husseygaybell.com



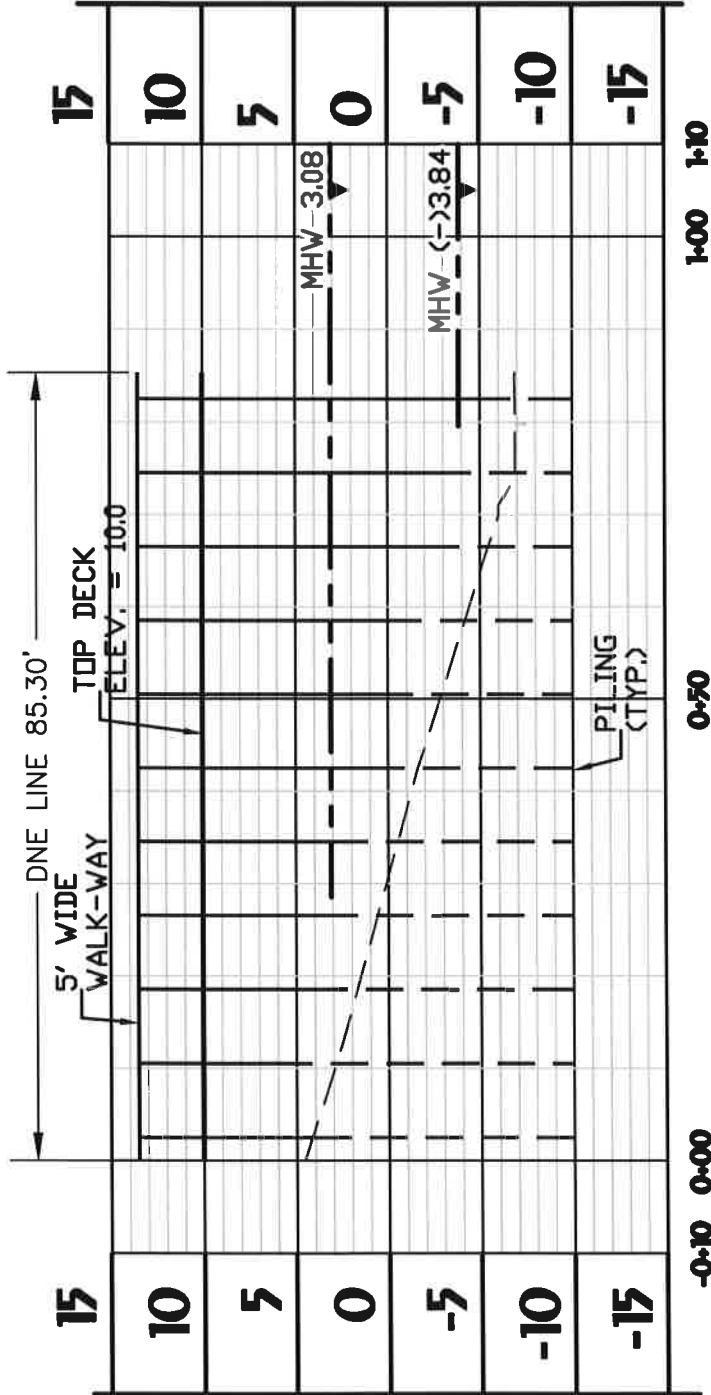
HUSSEY GAY BELL

Established 1958

329 COMMERCIAL DRIVE, SAVANNAH, GA 31406 / T:912.354.4626
 SAVANNAH • ATLANTA • CHARLESTON • COLUMBIA
 www.husseygaybell.com

**BLUFFSIDE AT COUNTRY CLUB CREEK
 BLUFFSIDE DOCK PERMITTING
 TOPOGRAPHY**

DATE: MARCH 13, 2017 SCALE: 1"=20'
 PROJECT NO. 116220620 SHEET NO: 6 of 8

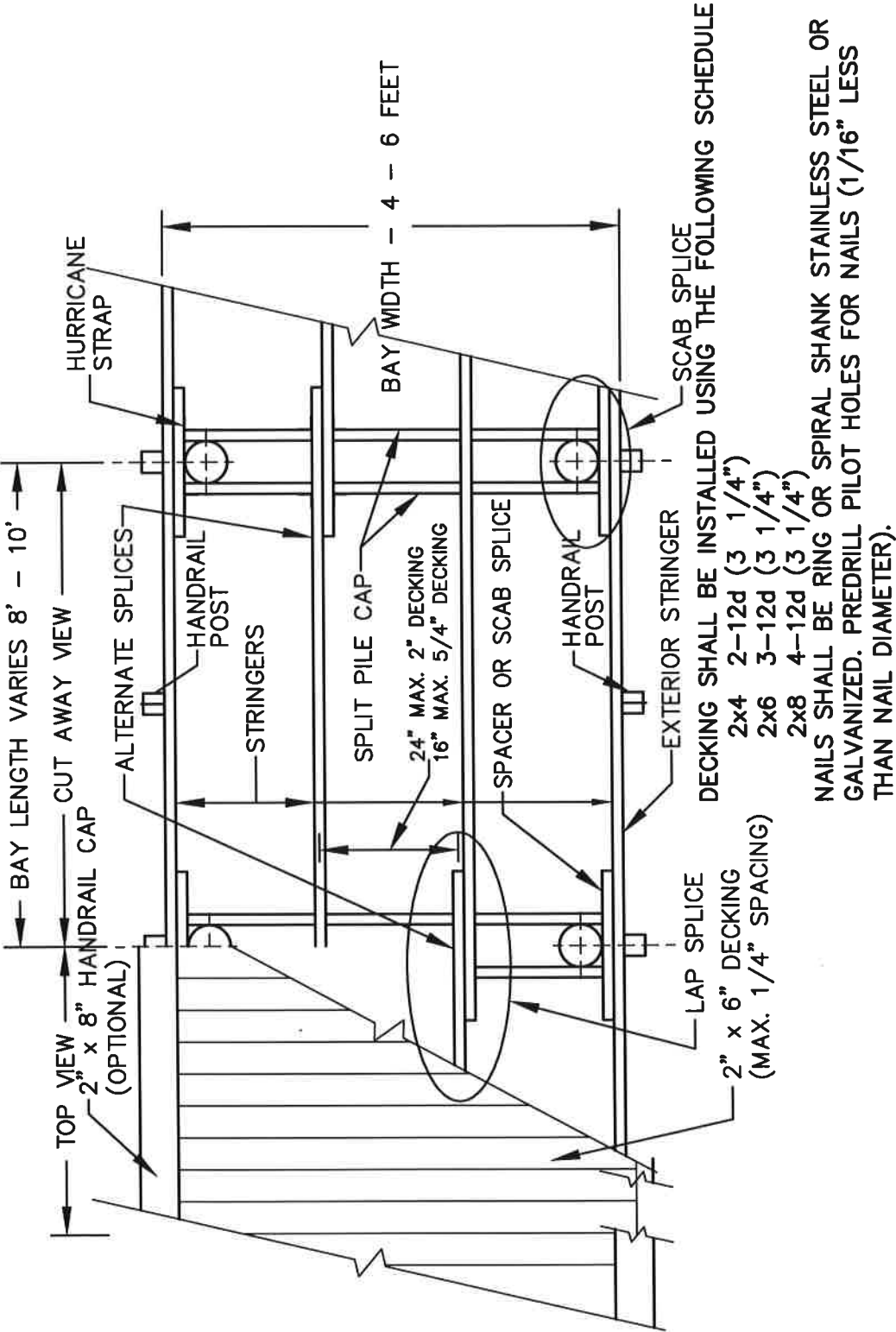


**BLUFFSIDE AT COUNTRY CLUB CREEK
BLUFFSIDE DOCK PERMITTING**

WATER ACCESS PROFILE
DATE: OCTOBER 04, 2016 **SCALE: 1"=20'**
REV: DECEMBER 08, 2016 **PROJECT NO. 116220620** **SHEET NO: 8 of 8**

HUSSEY GAY BELL
 — Established 1958 —

329 COMMERCIAL DRIVE, SAVANNAH, GA 31406 / T:912.354.4626
 SAVANNAH • ATLANTA • CHARLESTON • COLUMBIA
 www.husseygaybell.com



1 DOCK PLAN

Scale: N.T.S.

DECKING SHALL BE INSTALLED USING THE FOLLOWING SCHEDULE

2x4	2-12d (3 1/4")
2x6	3-12d (3 1/4")
2x8	4-12d (3 1/4")

NAILS SHALL BE RING OR SPIRAL SHANK STAINLESS STEEL OR GALVANIZED. PREDRILL PILOT HOLES FOR NAILS (1/16" LESS THAN NAIL DIAMETER).

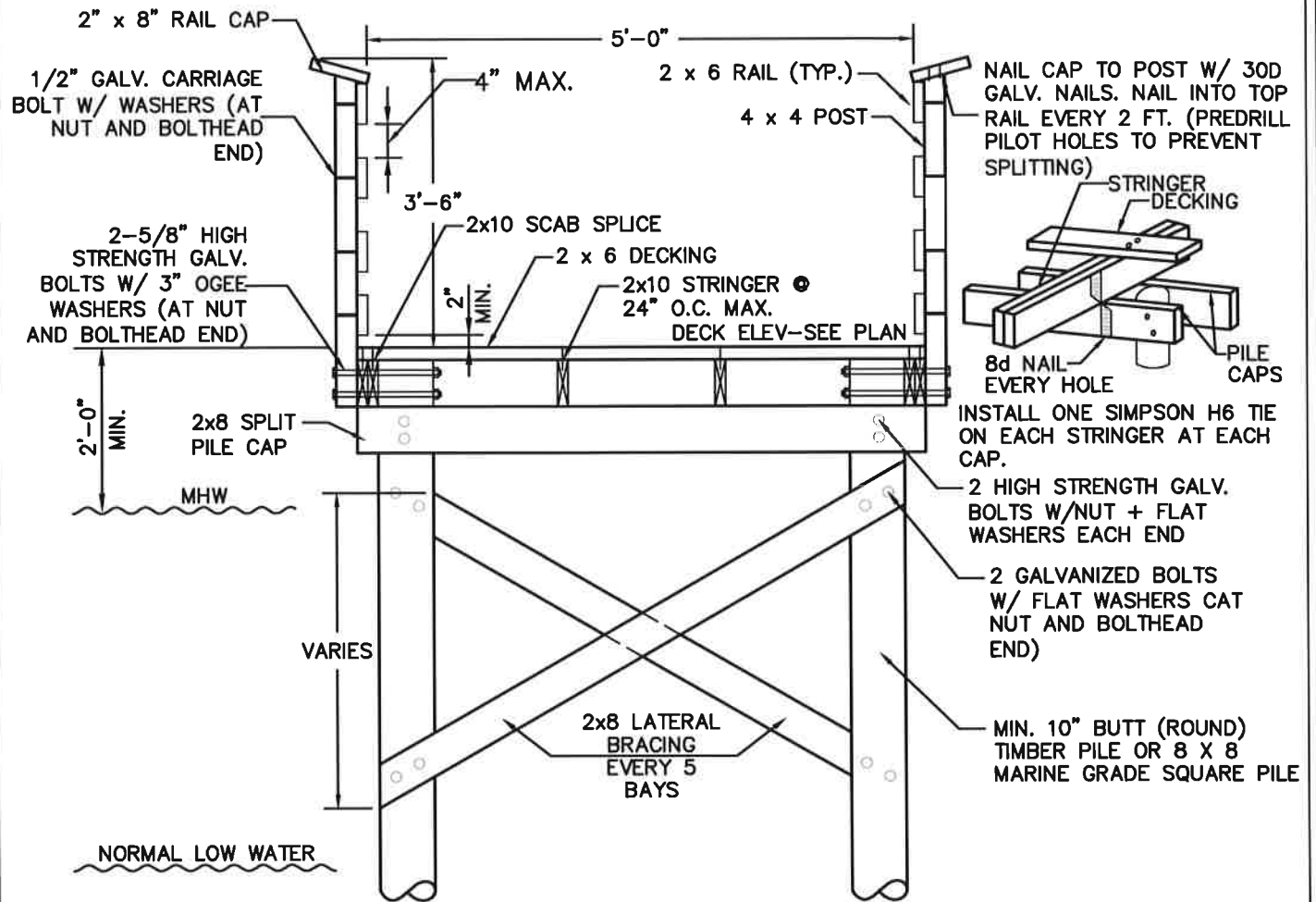
**BLUFFSIDE AT COUNTRY CLUB CREEK
BLUFFSIDE DOCK PERMITTING**

WATER ACCESS (LAYOUT PLAN)
DATE: OCTOBER 04, 2016 SCALE: N.T.S.

REV: DECEMBER 08, 2016 PROJECT NO. 116220620 SHEET NO: 3 of 8

HUSSEY GAY BELL
Established 1958

329 COMMERCIAL DRIVE, SAVANNAH, GA 31406 / T:912.354.4626
SAVANNAH • ATLANTA • CHARLESTON • COLUMBIA
www.husseygaybell.com



THE FOLLOWING CHART PROVIDES GUIDANCE ON THE SELECTION OF PILE CAPS, LATERAL BRACING, STRINGERS AND THE SIZING OF CONNECTORS:

BAY SIZE (W x L)	LATERAL BRACING SIZE (CONNECTORS)	PILE CAP SIZE (CONNECTORS)	STRINGER SIZE (CONNECTORS)
4 x 4	2 x 6 (2-5/8" x 8" BOLTS)*	2 x 8 (2-5/8" BOLTS)	2 x 8 (TOE NAIL/HS)**
4 x 10	2 x 6 (2-5/8" x 8" BOLTS)*	2 x 8 (2-5/8" BOLTS)	2 x 8 (TOE NAIL/HS)
6 x 8	2 x 8 (2-3/4" x 8" BOLTS)*	2 x 8 (2-5/8" BOLTS)	2 x 8 (TOE NAIL/HS)
6 x 10	2 x 8 (2-7/8" x 8" BOLTS)*	2 x 8 (2-5/8" BOLTS)	2 x 8 (TOE NAIL/HS)

* COULD USE A SINGLE BOLT WITH SPIKE GRID SINGLE CONNECTOR. USE OGEE WASHERS ON BOLT HEAD SIDE WITH 4x4-1/8" CUT WASHER OR OGEE WASHER ON NUT SIDE.

** TOE NAIL WITH 2-30D RING SHANK NAILS - USE HURRICANE STRAPS IN ADDITION TO TOE NAIL IN HURRICANE OR HEAVY TORNADO AREAS.

2 DOCK SECTION
Scale: N.T.S.

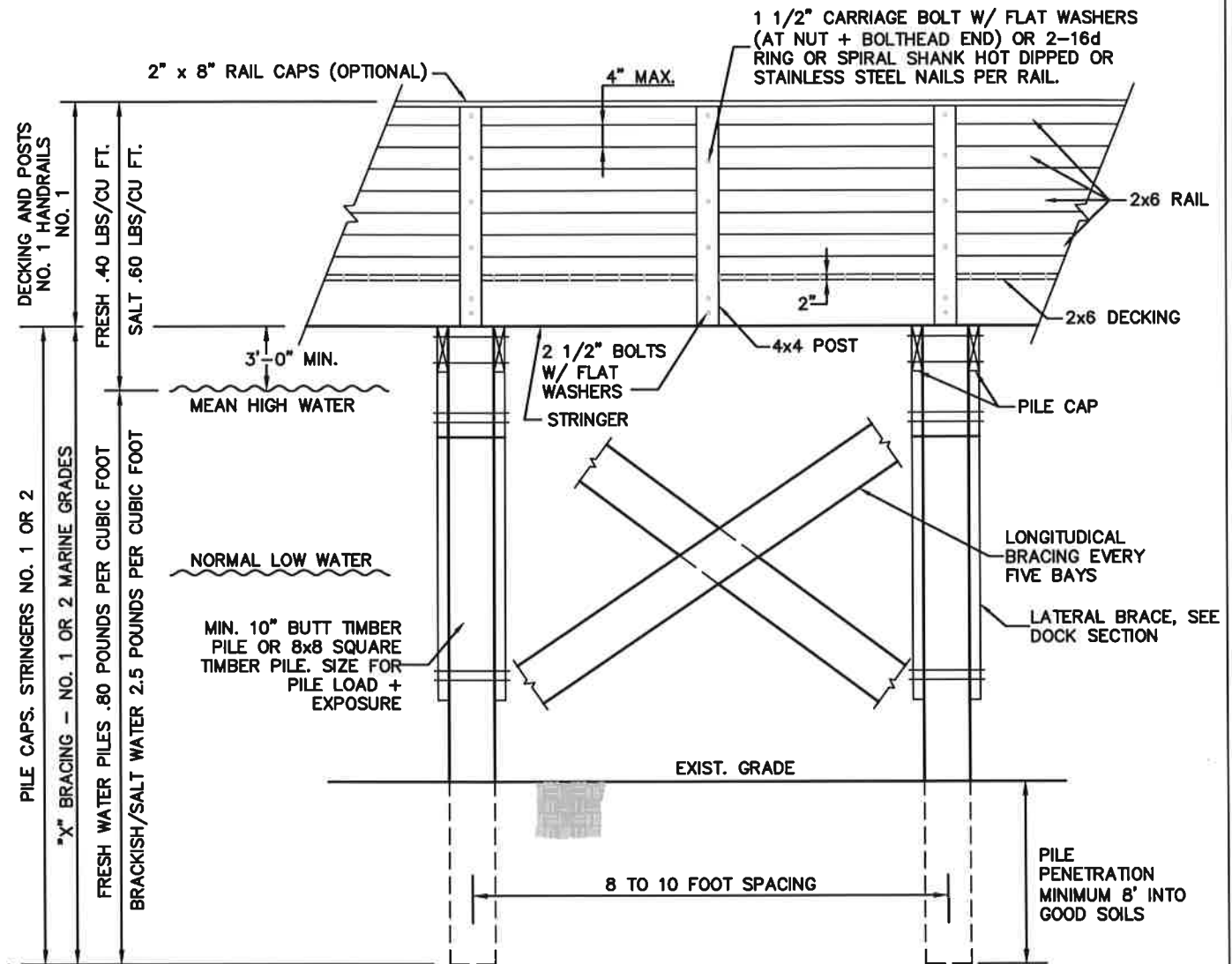
**BLUFFSIDE AT COUNTRY CLUB CREEK
BLUFFSIDE DOCK PERMITTING
WATER ACCESS (SECTION)**

DATE: OCTOBER 04, 2016 SCALE: N.T.S.
REV: DECEMBER 08, 2016
PROJECT NO. 116220620 SHEET NO: 4 of 8

HUSSEY GAY BELL

Established 1958

329 COMMERCIAL DRIVE, SAVANNAH, GA 31406 / T:912.354.4626
SAVANNAH • ATLANTA • CHARLESTON • COLUMBIA
www.husseygaybell.com



PILE NOTES

1. SPECIFY, ORDER AND INSTALL PILES FOR TRUE LENGTH. DO NOT CUT LONG PILES OR USE PILE CUT OFFS FOR SHORTER PILES.
2. PILES SHOULD BE DRIVEN TO GRADE. JETTING OF FIRST TWO FEET OF EMBEDMENT MAY BE ALLOWED TO OBTAIN ALIGNMENT.
3. PILES SHOULD BE DRIVEN VERTICAL (PLUMB)
4. CCA PRESERVATIVE SHALL BE FIXED IN PILES AT THE TIME OF DELIVERY. SUPPLIERS CAN VERIFY FIXATION BY TESTING PILES IN ACCORDANCE WITH AWPAS STANDARDS.

3 DOCK ELEVATION
Scale: N.T.S.

**BLUFFSIDE AT COUNTRY CLUB CREEK
BLUFFSIDE DOCK PERMITTING
WATER ACCESS (ELEVATION)**

**DATE: OCTOBER 04, 2016 SCALE: N.T.S.
REV: DECEMBER 08, 2016
PROJECT NO. 116220620 SHEET NO: 5 of 8**

HUSSEY GAY BELL

Established 1958

329 COMMERCIAL DRIVE, SAVANNAH, GA 31406 / T:912.354.4626
SAVANNAH • ATLANTA • CHARLESTON • COLUMBIA
www.husseygaybell.com