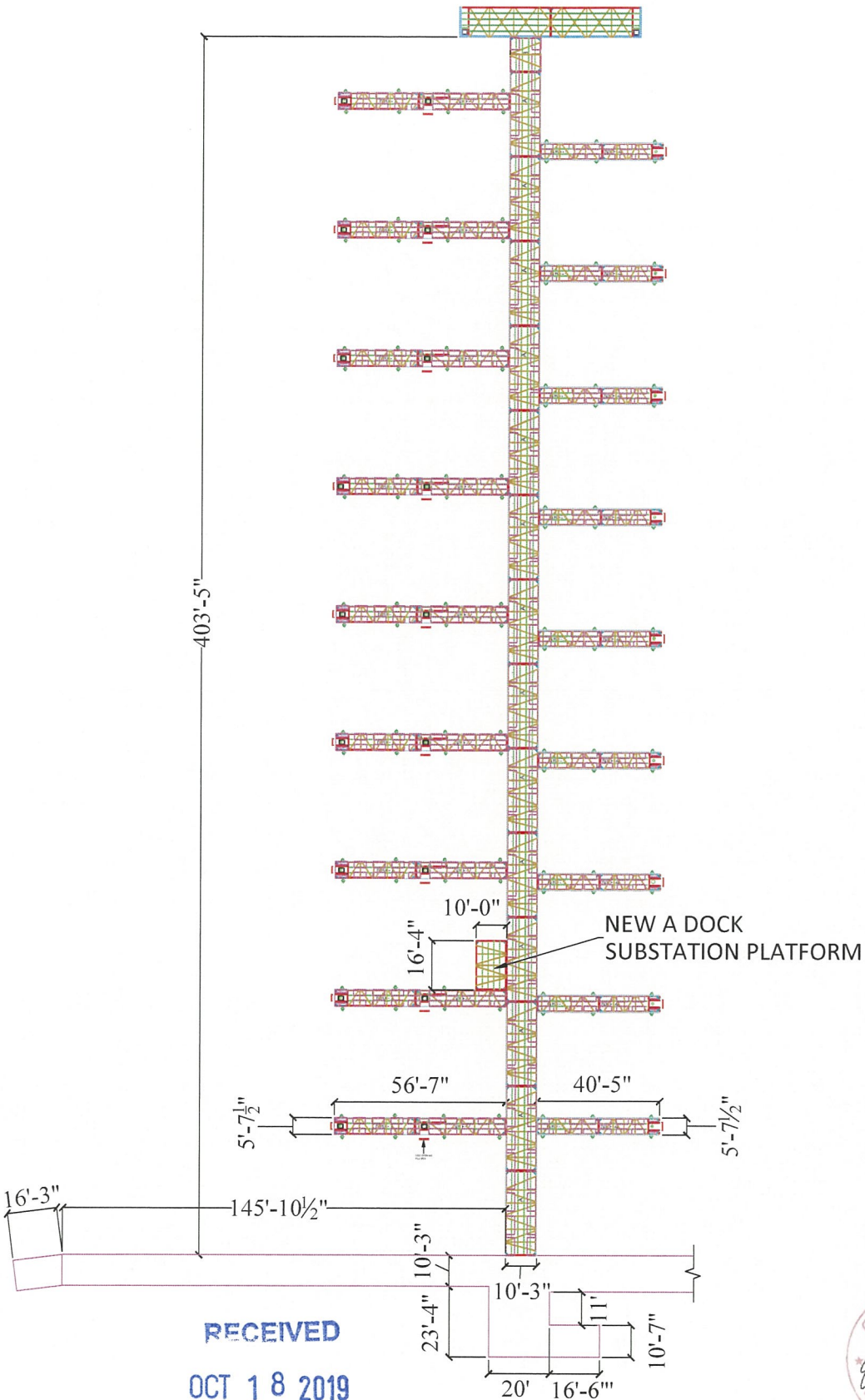


RECEIVED
 OCT 18 2019
 GADNR



DESIGNED BY ERM	DATE 19SEP2019	DEALER WAHOO COMMERCIAL	JOB NAME GOLDEN ISLE - PROP.
	THE NEGOTIATION CONTAINED IN THIS DRAWING IS THE SOLE PROPERTY OF WAHOO DOCKS. ANY REPRODUCTION IN PART OR AS A WHOLE WITHOUT THE WRITTEN PERMISSION OF WAHOO DOCKS IS PROHIBITED.		
DOCK TYPE CATS/XTREME		VIEW FULL MARINA	
203 CHESTERRA DRIVE DAHLONEGA, GA 30533 PH: (770) 532-8411 FX: (770) 532-2983 www.wahoodocks.com		wahoo DOCKS	

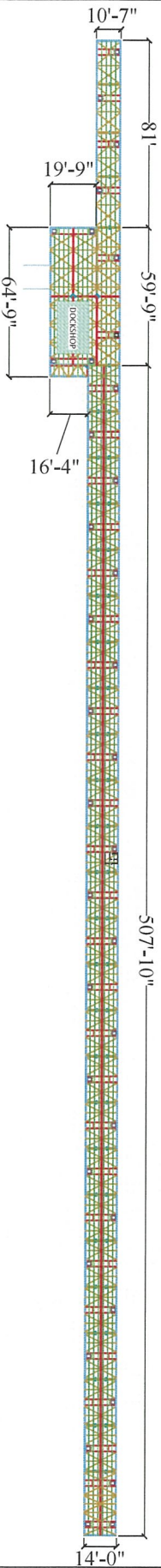


RECEIVED
OCT 18 2019

GADNR



DESIGNED BY ERM	DATE 19SEP2019	DEALER WAHOO COMMERCIAL	VIEW A & CONN. DOCK	DOCK TYPE CAT 5	THE INFORMATION CONTAINED IN THIS DRAWING IS THE SOLE PROPERTY OF WAHOO DOCKS. ANY REPRODUCTION IN PART OR AS A WHOLE WITHOUT THE WRITTEN PERMISSION OF WAHOO DOCKS IS PROHIBITED. www.wahoodocks.com	203 CHESTERFERRA DRIVE DAHLONEGA, GA 30533 PH: (770) 532-8411 FX: (770) 532-2983	wahoo DOCKS
	JOB NAME GOLDEN ISLE - PROP.						



RECEIVED
 OCT 18 2019
 GADNR



203 CHESTERA DRIVE
 DAHLONEGA, GA 30053
 PH: (770) 532-8411
 FX: (770) 532-2983
 www.wahoodocks.com

THE INFORMATION CONTAINED
 IN THIS DRAWING IS THE SOLE
 PROPERTY OF WAHOO DOCKS.
 ANY REPRODUCTION IN PART
 OR AS A WHOLE WITHOUT THE
 WRITTEN PERMISSION OF WAHOO DOCKS IS PROHIBITED.

DOCK TYPE
 XTREME

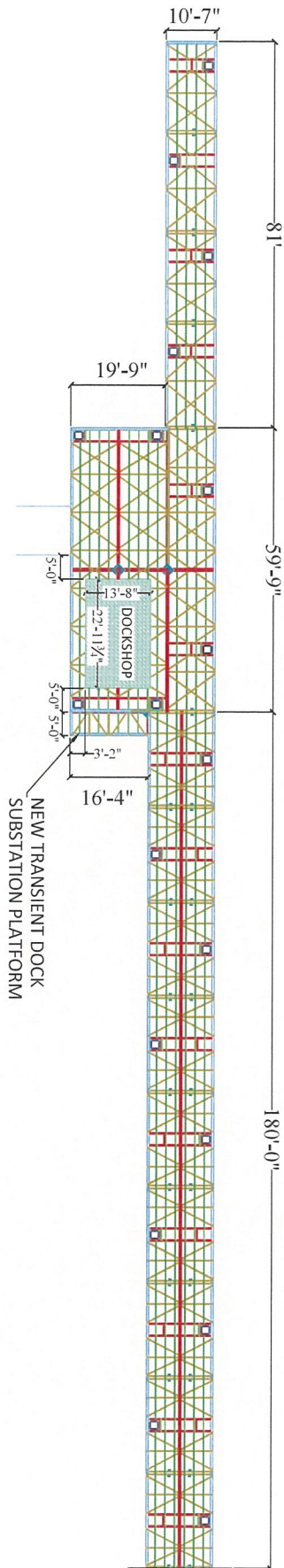
VIEW
 TRANSIENT DOCK

DEALER
 WAHOO COMMERCIAL

JOB NAME
 GOLDEN ISLE - PROP.

DATE
 19SEP2019

DESIGNED BY
 ERM



CONTINUED SHEET 5

RECEIVED
 OCT 18 2019
 GADNR



wahoo DOCKS
 203 CHESTERFERRA DRIVE
 DAHLONEGA, GA 30533
 PH: (770) 532-8411
 FX: (770) 532-2983
 www.wahoodocks.com

THE INFORMATION CONTAINED IN THIS DRAWING IS THE SOLE PROPERTY OF WAHOO DOCKS. ANY REPRODUCTION IN PART OR IN WHOLE WITHOUT THE WRITTEN PERMISSION OF WAHOO DOCKS IS PROHIBITED.

DOCK TYPE
 XTREME

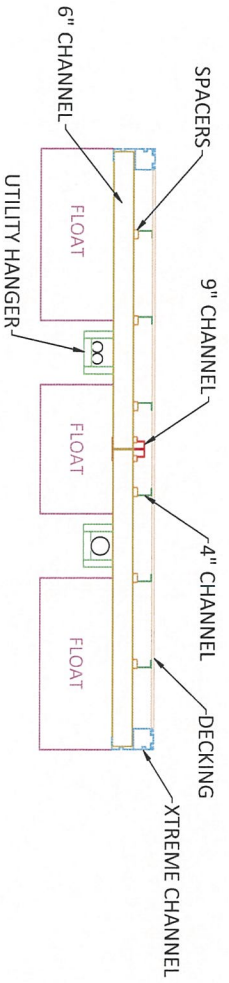
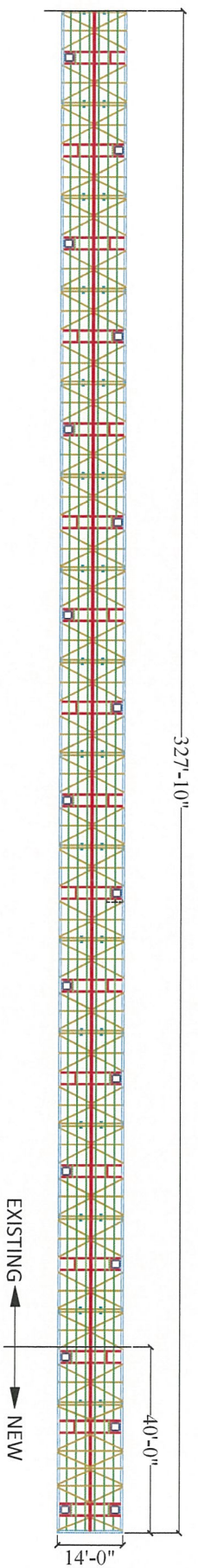
VIEW
 T DOCK NORTH

DEALER
 WAHOO COMMERCIAL
 JOB NAME
 GOLDEN ISLE - PROP.

DATE
 19SEP2019

DESIGNED BY
 ERM

RECEIVED
 OCT 18 2019
 GADNR



TYPICAL T DOCK CROSS SECTION



203 CHESTERERA DRIVE
 DAHLONEGA, GA 30053
 PH: (770) 532-8411
 FX: (770) 532-2983
 www.wahoodocks.com

THE NEGOTIATION CONTAINED IN THIS DRAWING IS THE SOLE PROPERTY OF WAHOO DOCKS. ANY REPRODUCTION IN PART OR WHOLE WITHOUT THE WRITTEN PERMISSION OF WAHOO DOCKS IS PROHIBITED.

DOCK TYPE
 XTREME

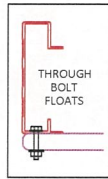
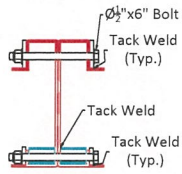
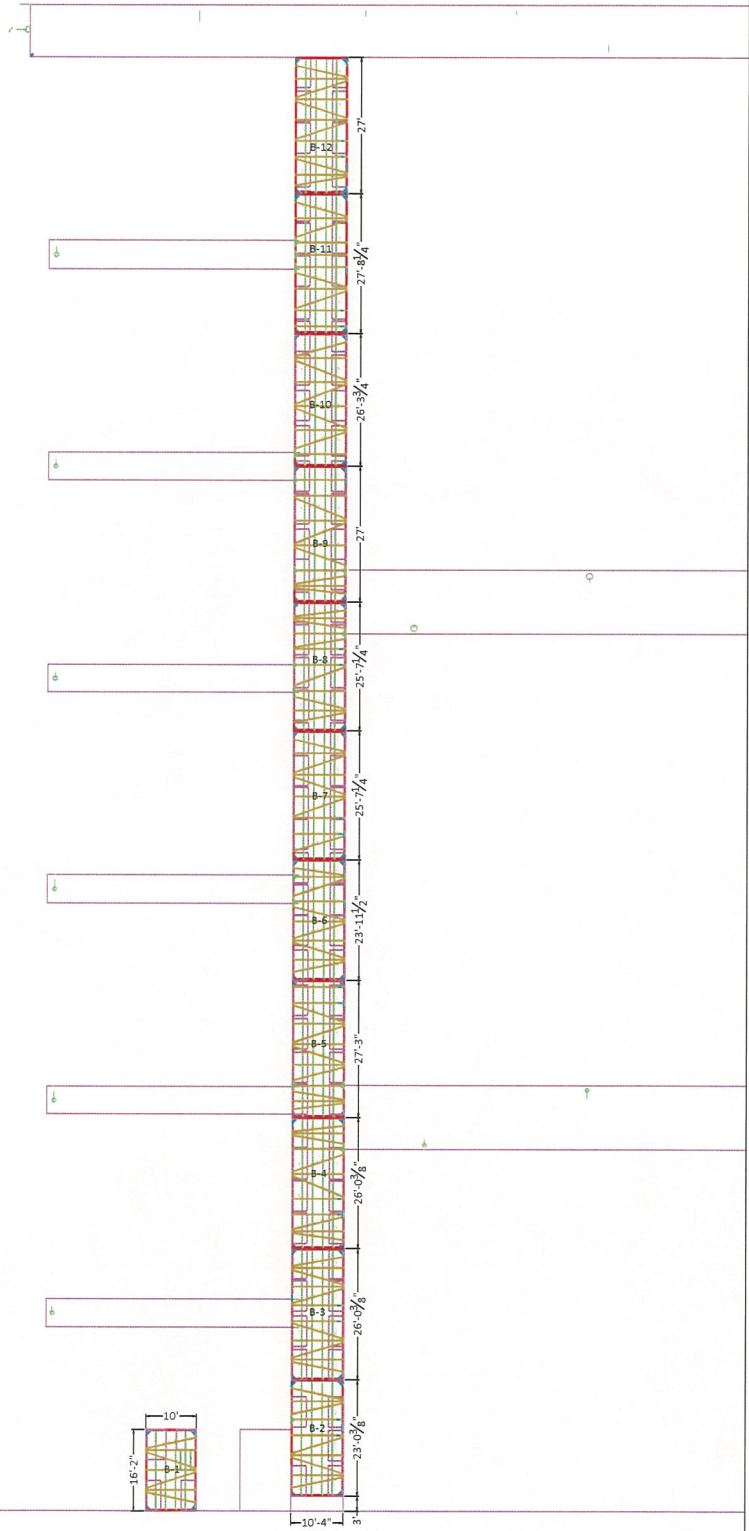
VIEW
 T DOCK SOUTH

DEALER	WAHOO COMMERCIAL
JOB NAME	GOLDEN ISLE - PROP.

DATE
 19SEP2019

DESIGNED BY
 ERM

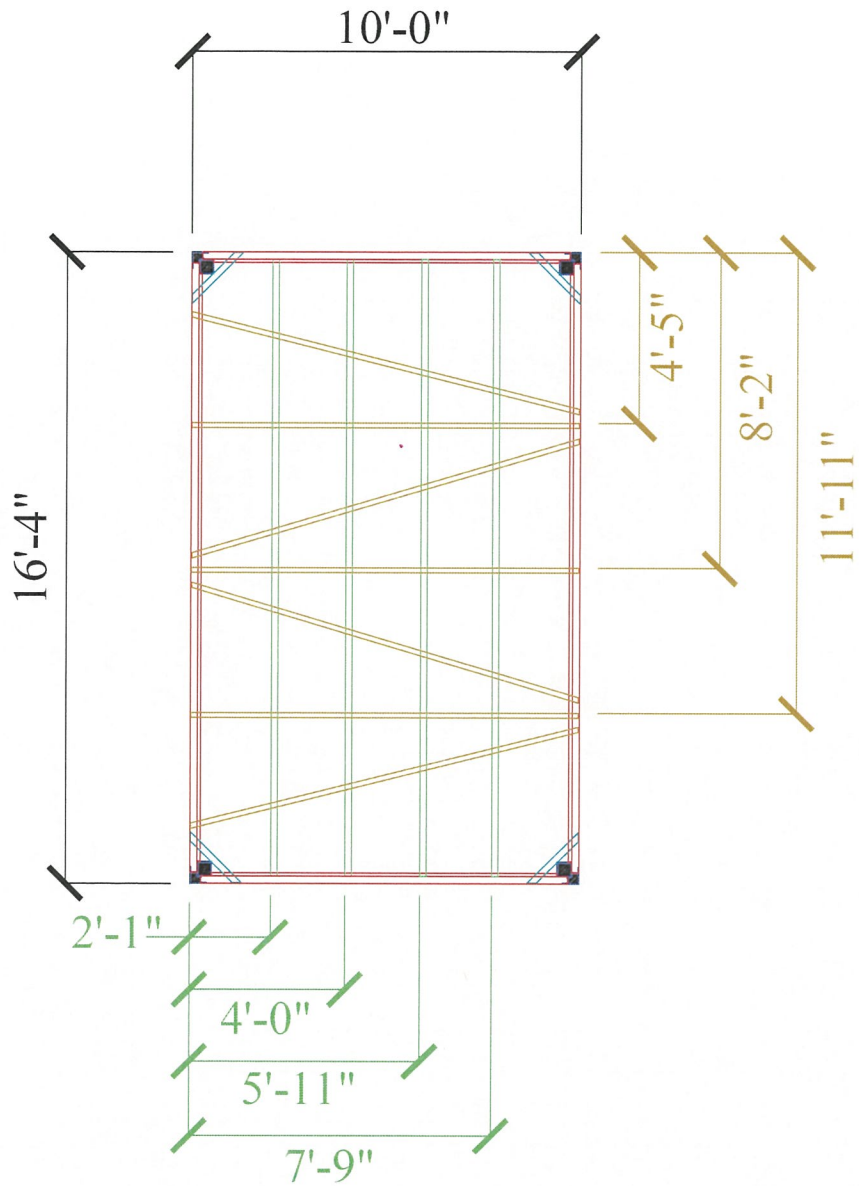
LAKE



SHORE

WAHOOCOM 192 - B DOCK	DEALER WAHOOCOM
	JOB NAME 192 - B DOCK
DATE 04APR2018	DESIGNED BY JIM
SECTION LAYOUT	
VIEW CAT-5	
DOCK TYPE CAT-5	
<small> THE INFORMATION CONTAINED IN THIS DRAWING IS THE SOLE PROPERTY OF WAHOOCOM. IT IS TO BE USED ONLY FOR THE PROJECT AND SITE SPECIFICALLY IDENTIFIED HEREIN. ANY REUSE OR MODIFICATION OF THIS DRAWING WITHOUT THE WRITTEN PERMISSION OF WAHOOCOM IS PROHIBITED. </small>	
<small> WAHOOCOM 203 CHESTERRA DRIVE DAHLONEGA, GA 30533 PH: (770) 532-8411 FX: (770) 532-2983 www.wahoodocks.com </small>	





RECEIVED
 OCT 1 8 2019
 GADNR



wahoo
DOCKS

203 CHESTERA DRIVE
 DAHLONEGA, GA 30533
 PH: (770) 532-8411
 FX: (770) 532-2983
 www.wahoodocks.com

THE INFORMATION CONTAINED
 IN THIS DRAWING IS THE SOLE
 PROPERTY OF WAHOO DOCKS.
 ANY REPRODUCTION IN PART
 OR AS A WHOLE WITHOUT THE
 WRITTEN PERMISSION OF WAHOO
 DOCKS IS PROHIBITED.

DOCK TYPE

CAT 5

VIEW

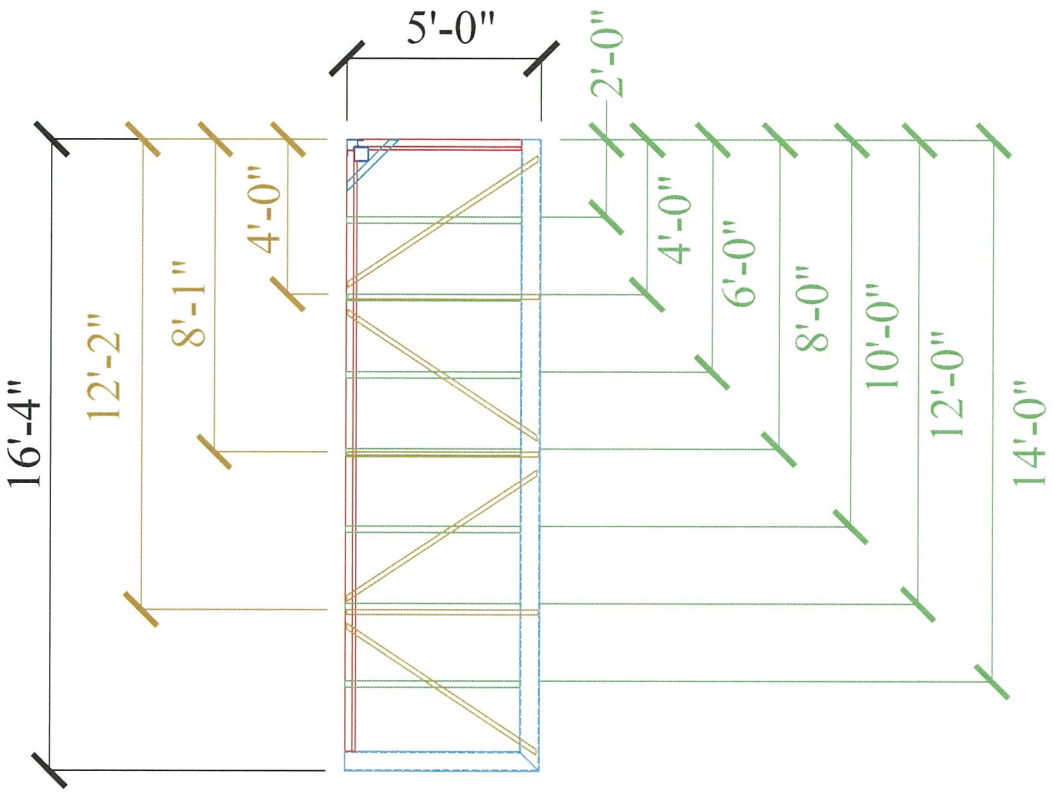
A DOCK SUB PLAT

DEALER
 WAHOO COMMERCIAL

JOB NAME
 GOLDEN ISLE - PROP.

DATE
 19SEP2019

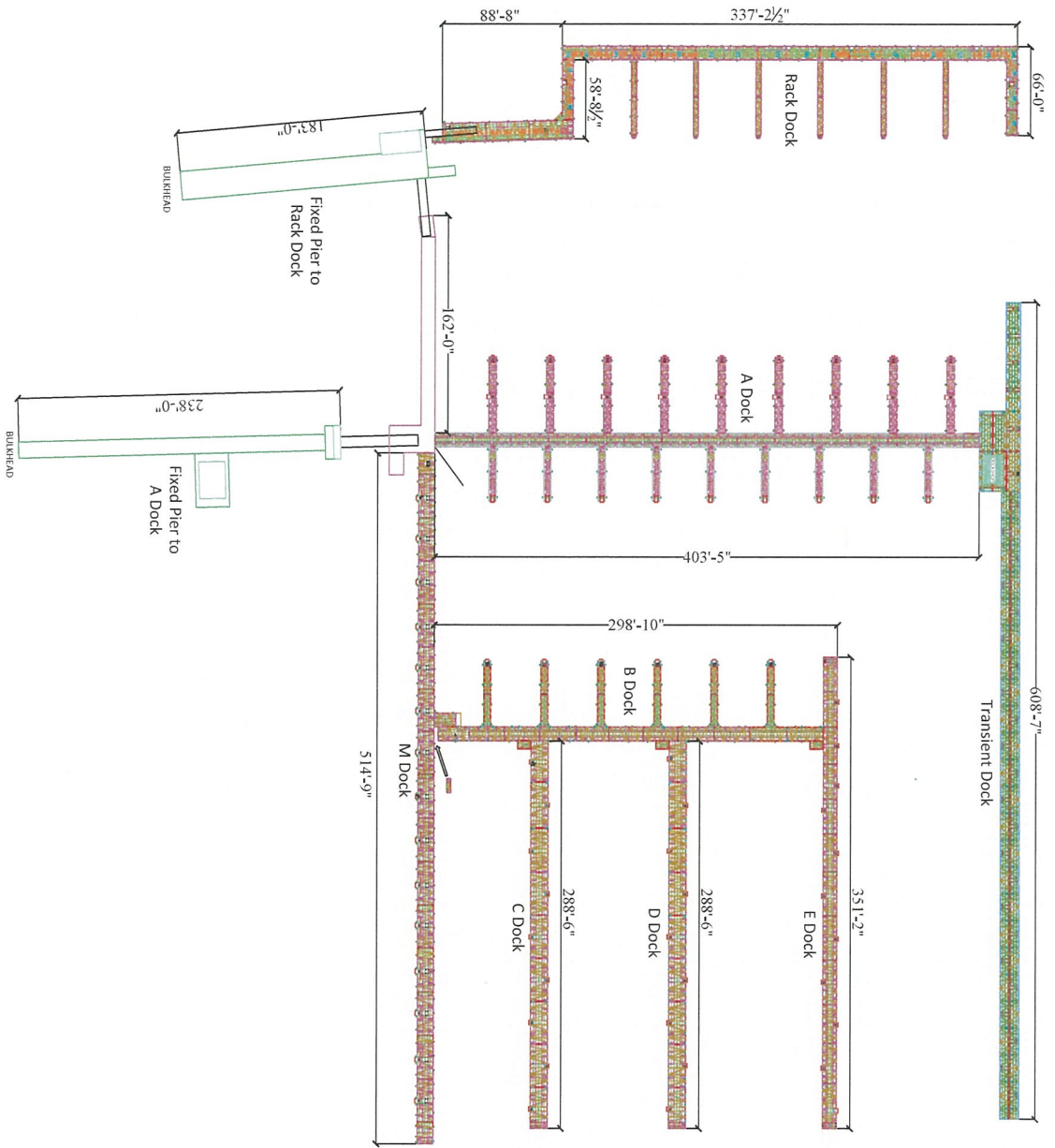
DESIGNED BY
 ERM



RECEIVED
 OCT 18 2019
 GADNR



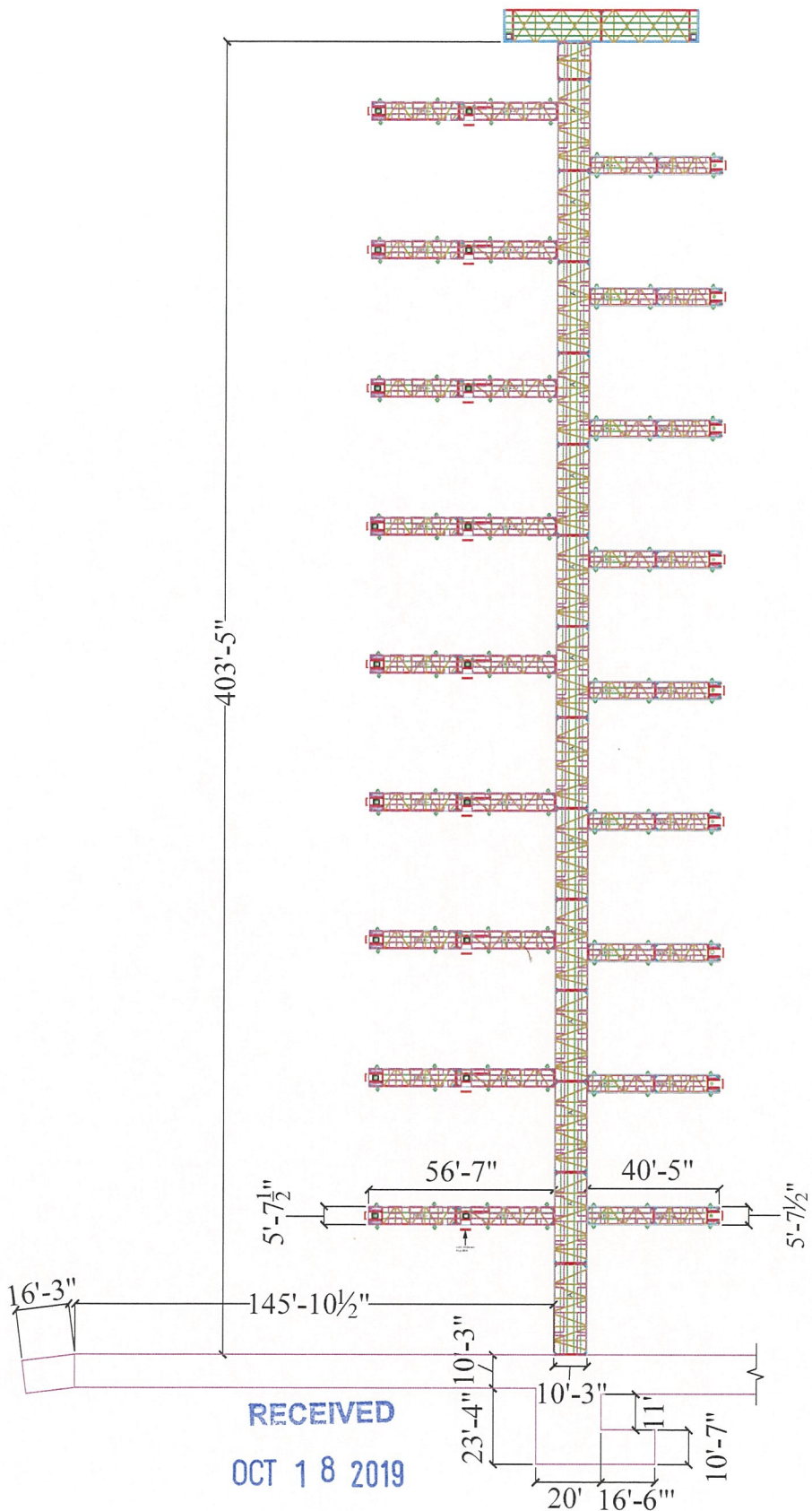
wahoo DOCKS 203 CHESTERRA DRIVE DAHLONEGA, GA 30533 PH: (770) 532-8411 FX: (770) 532-2983 www.wahoodocks.com	THE INFORMATION CONTAINED IN THIS DRAWING IS THE SOLE PROPERTY OF WAHOO DOCKS. ANY REPRODUCTION IN PART OR AS A WHOLE WITHOUT THE WRITTEN PERMISSION OF WAHOO DOCKS IS PROHIBITED.
	DOCK TYPE CAT 5
VIEW T DOCK SUB PLAT	DEALER WAHOO COMMERCIAL
DATE 19SEP2019	JOB NAME GOLDEN ISLE - PROP.
DESIGNED BY ERM	



RECEIVED
 OCT 18 2019
 GADNR



WAHOO COMMERCIAL GOLDEN ISLE - EXISTING	DEALER WAHOO COMMERCIAL
	JOB NAME GOLDEN ISLE - EXISTING
DATE 19SEP2019	DESIGNED BY ERM
DOCK TYPE CATS/XTREME	VIEW FULL MARINA
THE INFORMATION CONTAINED IN THIS DRAWING IS THE SOLE PROPERTY OF WAHOO DOCKS. ANY REPRODUCTION IN PART OR WHOLE WITHOUT THE WRITTEN PERMISSION OF WAHOO DOCKS IS PROHIBITED.	
203 CHESTERRA DRIVE DAHLONEGA, GA 30533 PH: (770) 532-8411 FX: (770) 532-2983 www.wahoodocks.com	

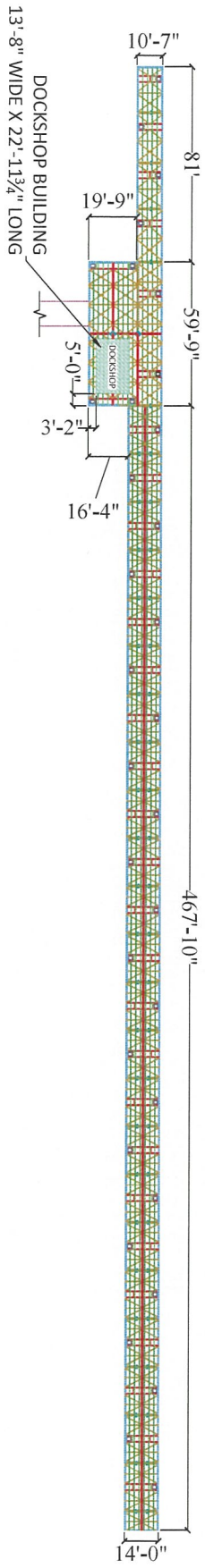


RECEIVED
 OCT 18 2019
 GADNR



DESIGNED BY ERM	DATE 19SEP2019	DEALER WAHOO COMMERCIAL	VIEW A & CONN. DOCK	DOCK TYPE CAT 5	THE INFORMATION CONTAINED IN THIS DRAWING IS THE SOLE PROPERTY OF WAHOO DOCKS. ANY REPRODUCTION IN PART OR WHOLE WITHOUT THE WRITTEN PERMISSION OF WAHOO DOCKS IS PROHIBITED. www.wahoodocks.com
	JOB NAME GOLDEN ISLE - EXISTING	wahoo DOCKS 203 CHESTERA DRIVE DAHLONEGA, GA 30053 PH: (770) 532-8411 FX: (770) 532-2983			

RECEIVED
 OCT 18 2019
 GADNR



203 CHESTERERA DRIVE
 DAHLONEGA, GA 30053
 PH: (770) 532-8411
 FX: (770) 532-2983
 www.wahoodocks.com

THE INFORMATION CONTAINED
 IN THIS DRAWING IS THE SOLE
 PROPERTY OF WAHOO DOCKS.
 ANY REPRODUCTION IN PART
 OR AS A WHOLE WITHOUT THE
 WRITTEN PERMISSION OF
 WAHOO DOCKS IS PROHIBITED.

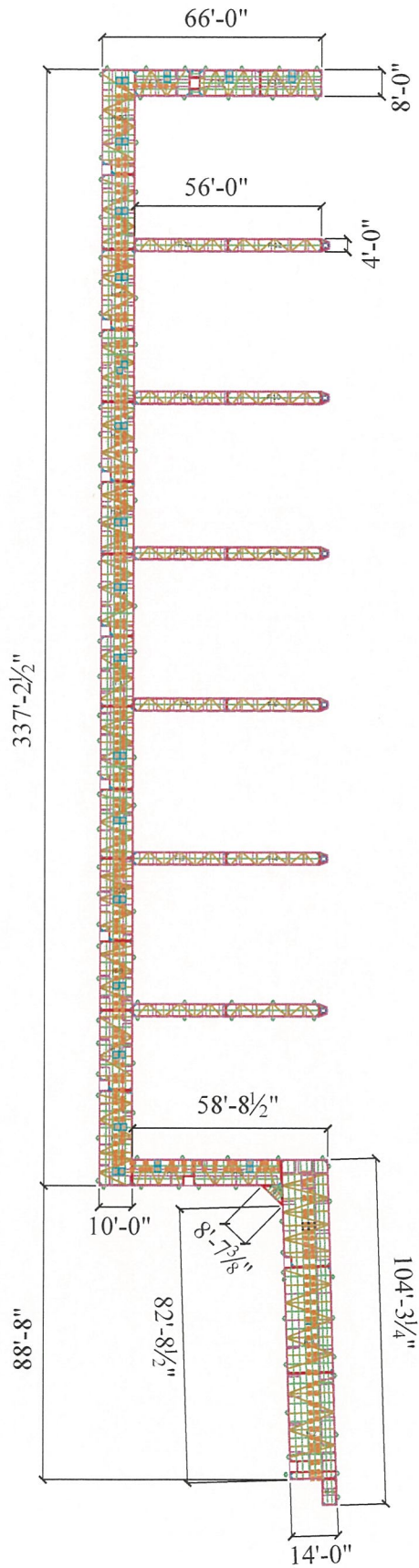
DOCK TYPE
 XTREME

VIEW
 TRANSIENT DOCK

DEALER	WAHOO COMMERCIAL
JOB NAME	GOLDEN ISLE - EXISTING

DATE
 19SEP2019

DESIGNED BY
 ERM



RECEIVED
 OCT 18 2019
 GADNR



203 CHESTERA DRIVE
 DAHLONGA, GA 30533
 PH: (770) 532-8411
 FX: (770) 532-2983
 www.wahoodocks.com



THE INFORMATION CONTAINED IN THIS DRAWING IS THE SOLE PROPERTY OF WAHOO DOCKS. ANY REPRODUCTION IN PART OR AS A WHOLE WITHOUT THE WRITTEN PERMISSION OF WAHOO DOCKS IS PROHIBITED.

DOCK TYPE

CAT 5

VIEW

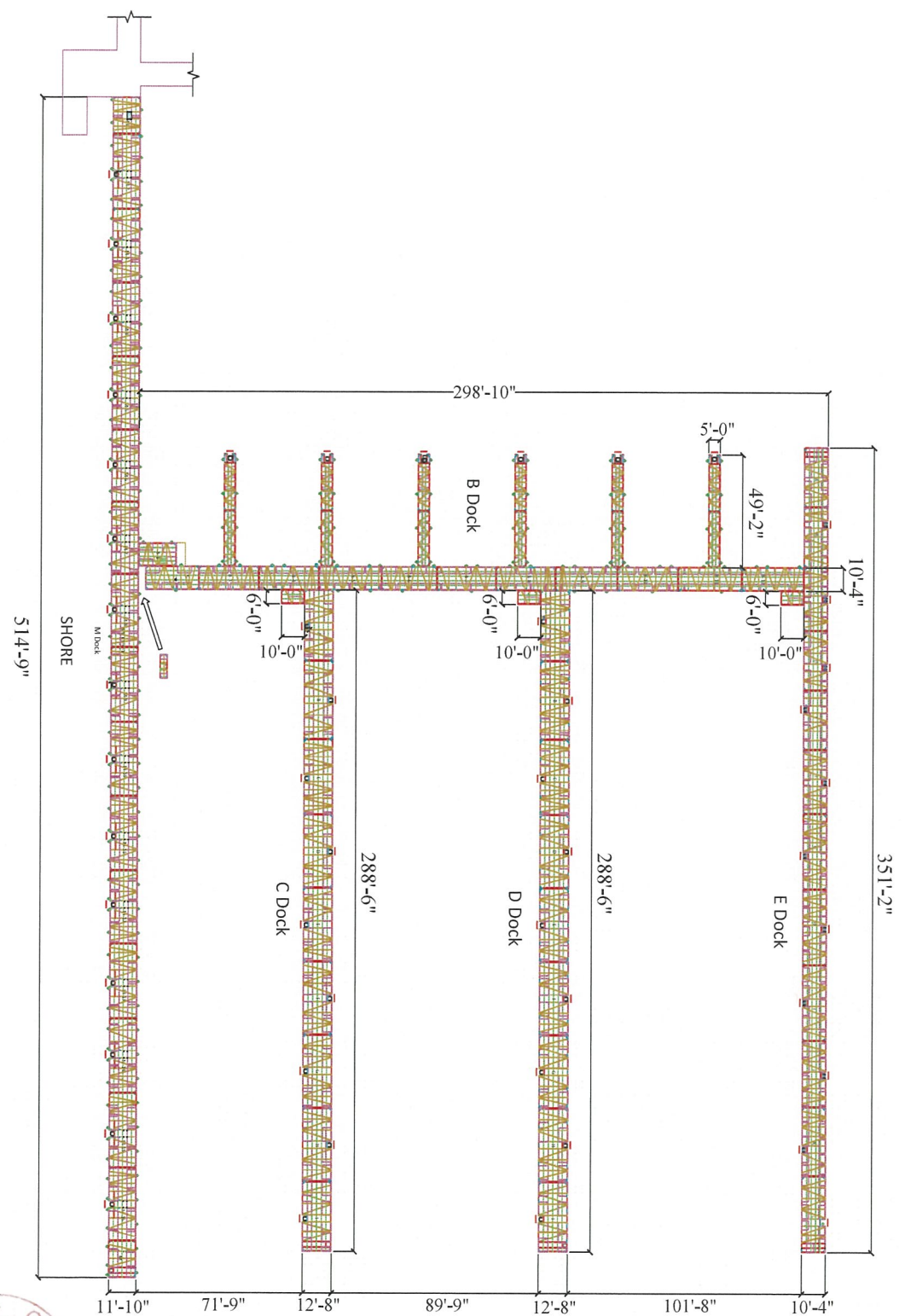
RACK DOCK

DEALER
 WAHOO COMMERCIAL

JOB NAME
 GOLDEN ISLE - EXISTING

DATE
 19SEP2019

DESIGNED BY
 ERM



RECEIVED
 OCT 29 2019
 GADNR



203 CHESTERRA DRIVE
 DAHLONEGA, GA 30533
 PH: (770) 532-8411
 FX: (770) 532-2983
 www.wahoodocks.com

THE REPRODUCER CONTAINED IN THIS DRAWING IS THE SOLE PROPERTY OF WAHOO DOCKS. ANY REPRODUCTION IN PART OR AS A WHOLE WITHOUT THE WRITTEN PERMISSION OF WAHOO DOCKS IS PROHIBITED.

DOCK TYPE

CATS/XTREME

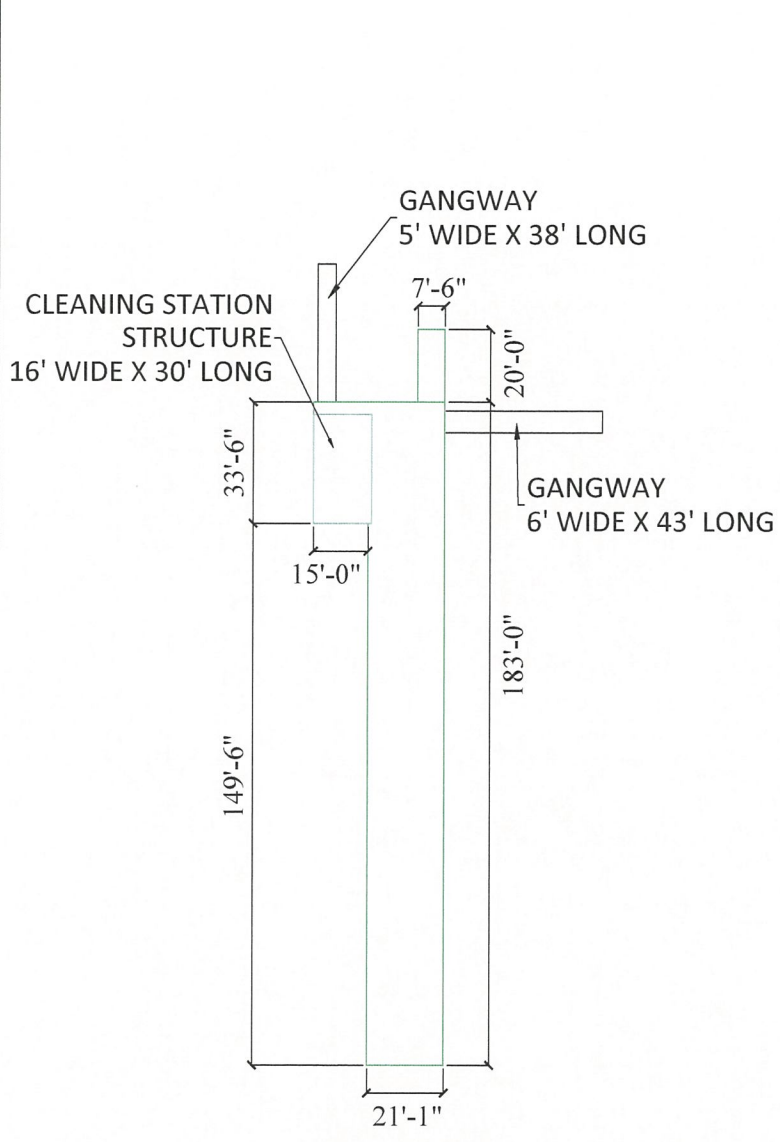
VIEW

B,C,D,E,M DOCKS

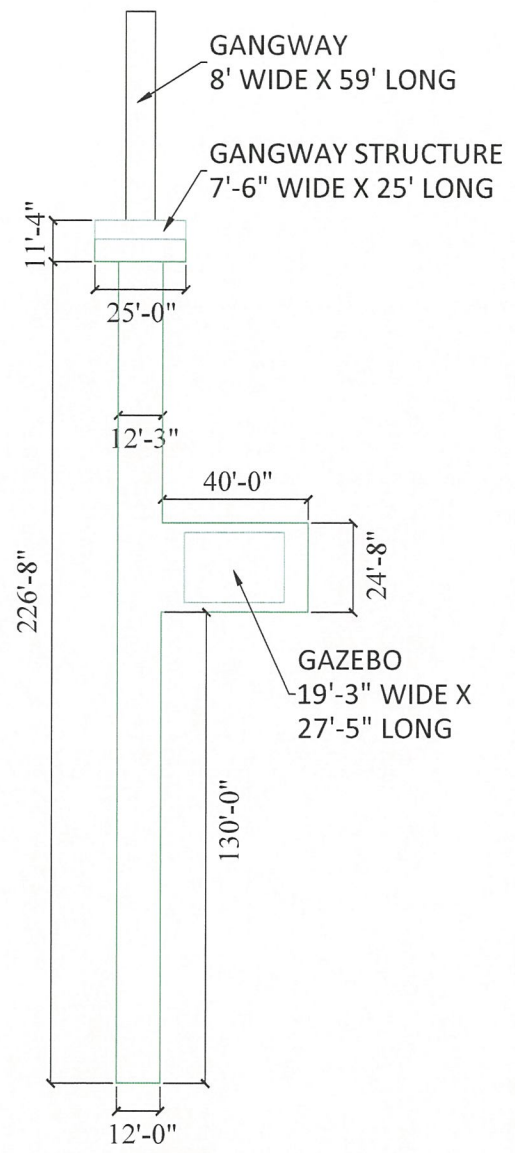
DEALER	WAHOO COMMERCIAL
JOB NAME	GOLDEN ISLE - EXISTING

DATE
 19SEP2019

DESIGNED BY
 ERM



**FIXED PIER TO
RACK DOCK**



**FIXED PIER
TO A DOCK**

RECEIVED
OCT 18 2019
GADNR



DESIGNED BY ERM	DATE 19SEP2019	DEALER WAHOO COMMERCIAL	VIEW FIXED PIERS	DOCK TYPE CAT 5	THE INFORMATION CONTAINED IN THIS DRAWING IS THE SOLE PROPERTY OF WAHOO DOCKS. ANY REPRODUCTION IN PART OR AS A WHOLE WITHOUT THE WRITTEN PERMISSION OF THE WAHOO DOCKS IS PROHIBITED. www.wahoodocks.com	wahoo DOCKS 203 CHESTERA DRIVE DAHLONEGA, GA 30533 PH: (770) 532-8411 FX: (770) 532-2983
	JOB NAME GOLDEN ISLE - EXISTING					