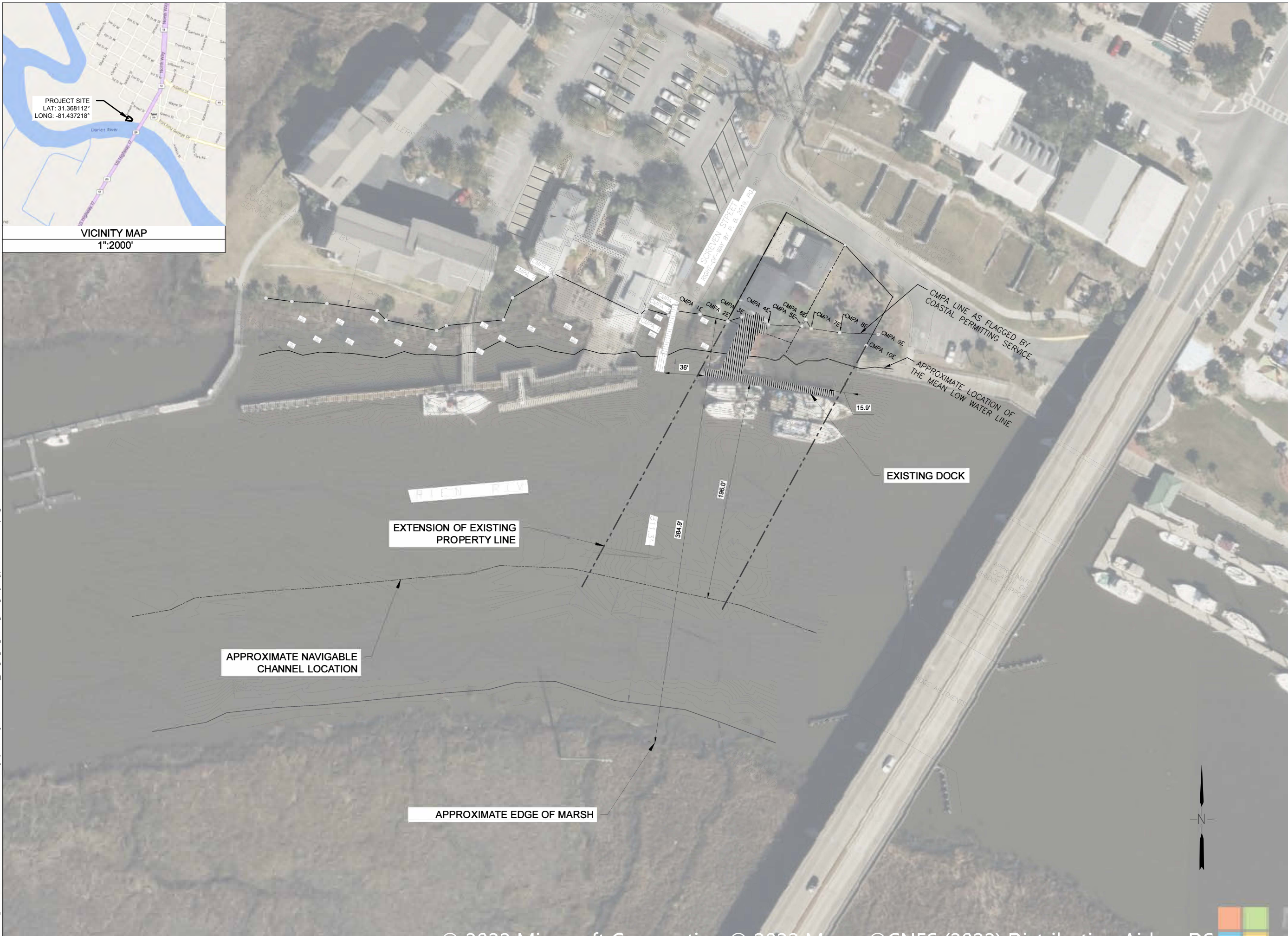


SKM HERITAGE HOLDINGS, LLC

SCALE: 1":40' (FOR 11"X17" PLOT)

SHEET:





PROPOSED

IN CMPA JURISDICTION

FIXED DECK: 1,094 SF (994 SF IN CMPA JURISDICTION)

WALKWAY: 156 SF

RAMP #1: 96 SF

FLOATING DOCK #1: 840 SF

RAMP #2: 120 SF

FLOATING DOCK #2: 936 SF

RAMP LANDING: 17.6 SF (+ 2.25 SF)

BULKHEAD: 152 SF (28.15 CV)

FILL: 28 SF (3.17 CV)

TOTAL STRUCTURE: 3, 600.25

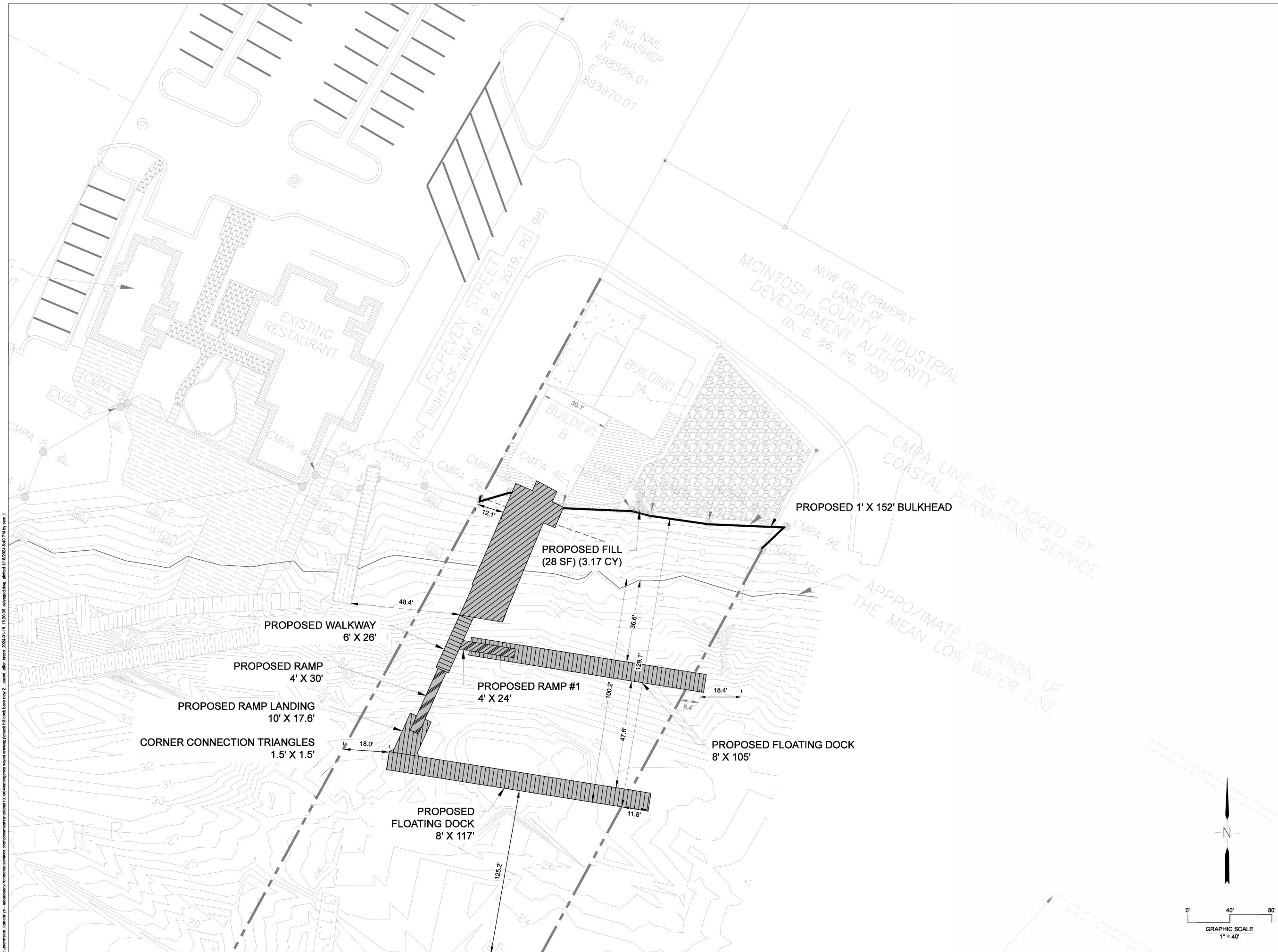
TOTAL IN CMPA JURISDICTION: 3,500.25 SF

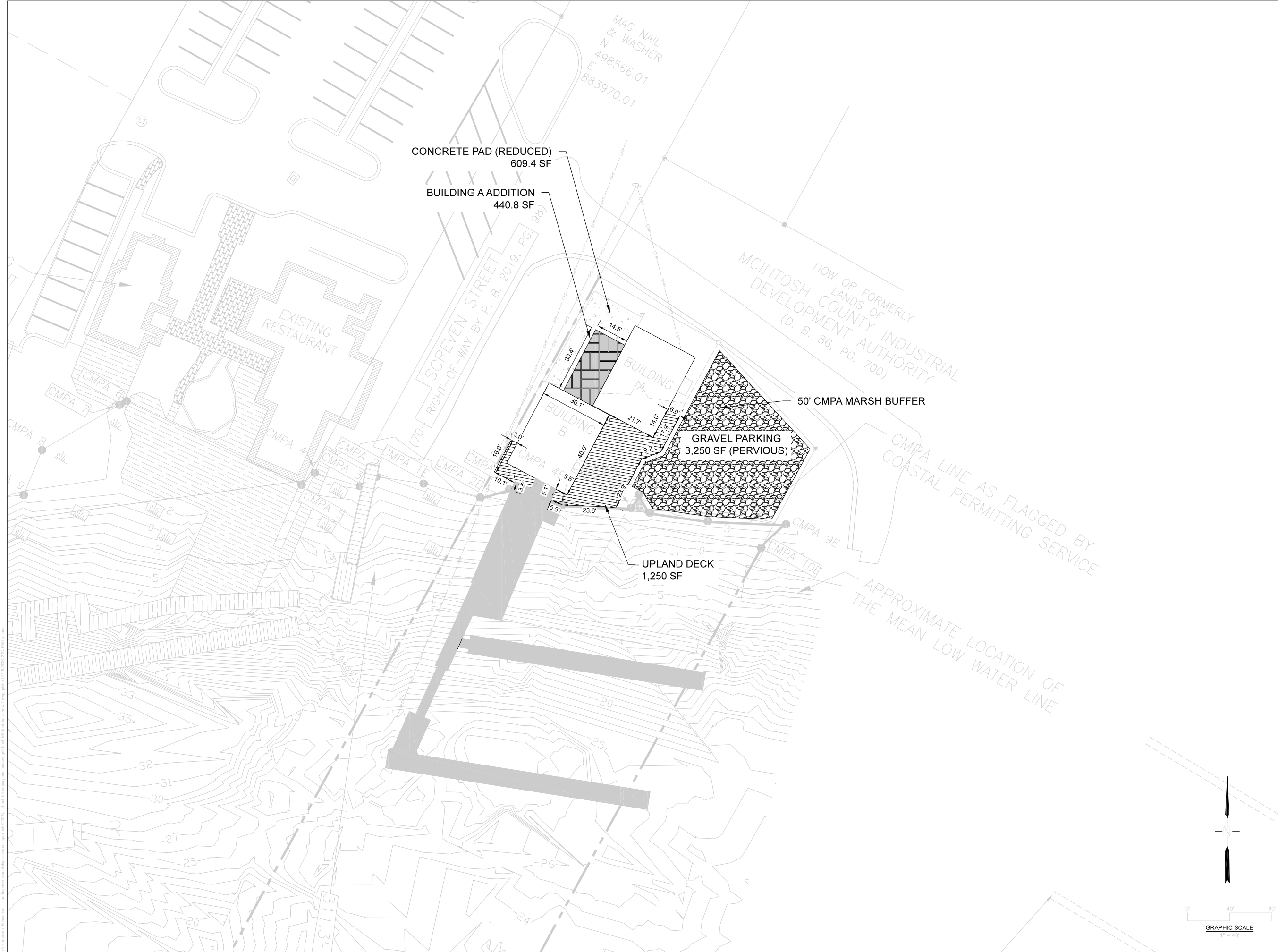
MLW - MLW: 311'
 MHW - MHW: = 1 MILE
 MLW - DOCK EDGE: 100.2'
 MHW - DOCK EDGE: 129.1'
 DOCK EDGE - NAVIGABLE CHANNEL: 125.2'
 DISTANCE TO RIGHT PL: 12.1'
 DISTANCE TO LEFT PL: 11.5'
 DISTANCE TO ADJACENT DOCK (RIGHT): 48.4'
 DISTANCE TO ADJACENT DOCK (LEFT): 18.4'
 WATER DEPTH AT MLW: 21.5'

DATE: 1/15/2024

SCALE: 1":40' (FOR 11"X17" PLOT)

SHEET:





NOT RELEASED
FOR
CONSTRUCTION

UPLAND COMPONENT

FIXED DECK: 1,250 SF (IN BUFFER)
BUILDING A: 1,644.8 SF (470.7 SF (IN BUFFER)
BUILDING B: 1,204 SF (IN BUFFER)
CONCRETE SURFACES: 609.4 SF (5.8 SF IN BUFFER)
GRAVEL PARKING: 3,250 SF (2,779.28 SF IN BUFFER)

TOTAL UPLAND LAND AREA: 9,475 SF
TOTAL UPLAND STRUCTURES: 7,958.2 SF
TOTAL UPLAND CMPA BUFFER AREA: 6,283 SF
TOTAL UPLAND STRUCTURES IN BUFFER: 5,709.78 SF
PRE-CON PERVIOUS AREA IN BUFFER: 4,436.4 SF (70%)
POST-CON PERVIOUS AREA IN BUFFER: 4,602.5 SF (73%)

SITE OVERVIEW

MLW - MLW: 311.3'
MHW - MHW: = 1 MILE
MLW - DOCK EDGE: 100.2'
MHW - DOCK EDGE: 129.1'
DOCK EDGE - NAVIGABLE CHANNEL: 125.2'
DISTANCE TO RIGHT PL: 12.1'
DISTANCE TO LEFT PL: -11.8'
DISTANCE TO ADJACENT DOCK (RIGHT): 48.4'
DISTANCE TO ADJACENT DOCK (LEFT): 18.4'
WATER DEPTH AT MLW: 21.5'

UPLAND COMPONENT

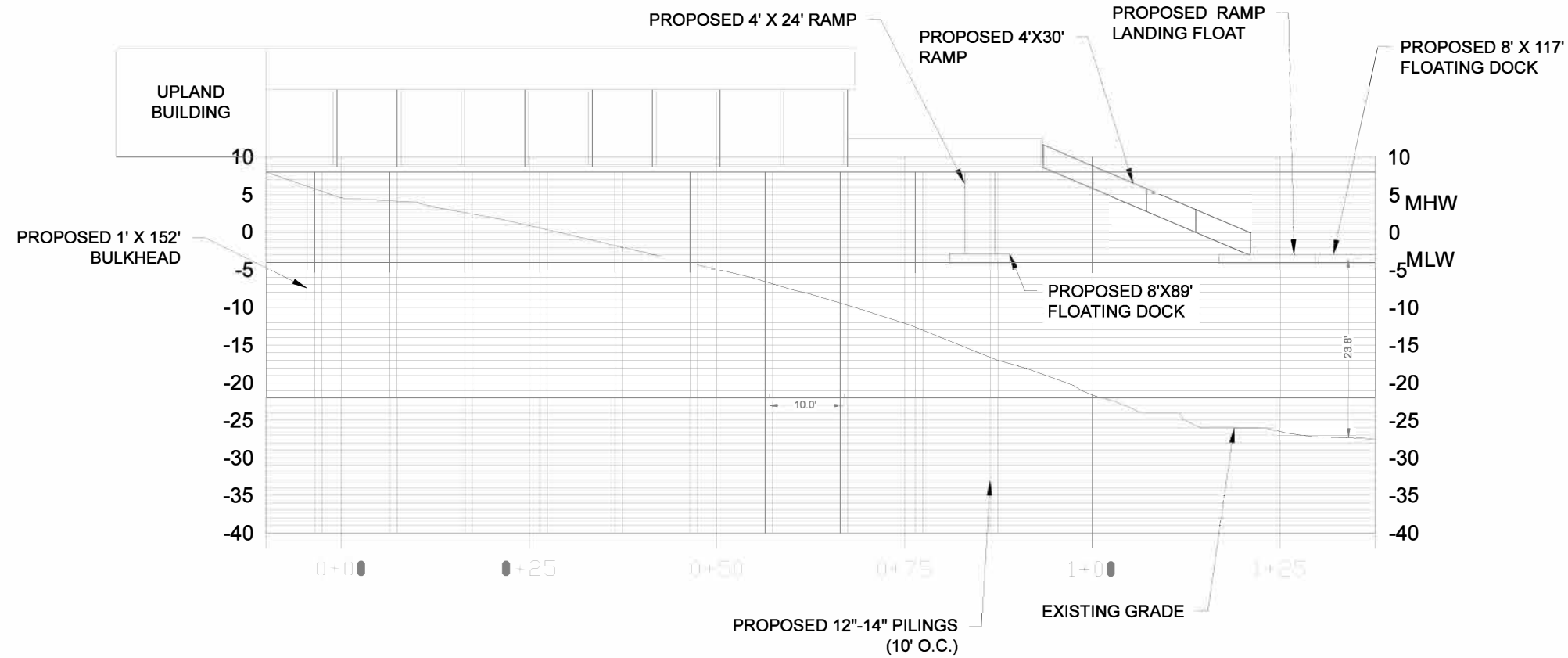
COASTAL PERMITTING SERVICE
DARIEN, GA
PREPARED FOR:
SKM HERITAGE HOLDINGS, LLC

DATE: 12/26/2022
SCALE: 1"=40' (FOR 11"x17" PLOT)

4

SHEET:

c:\users\slam_\desktop\lba\barsternormalservices.com\documents\inload\01\16\emergency asseel drawing\chuck hill dock base new 2_saved_dwg_craah_2024.01-16_16.20.36_saved.dwg, plotted 1/16/2024 10:04 PM by sam_l



NOT RELEASED
FOR
CONSTRUCTION

PROFILES

COASTAL PERMITTING SERVICE

DARIEN, GA

PREPARED FOR:
SKM HERITAGE HOLDINGS, LLC

DATE: 1/15/2024

SCALE: NTS

5

SHEET:

