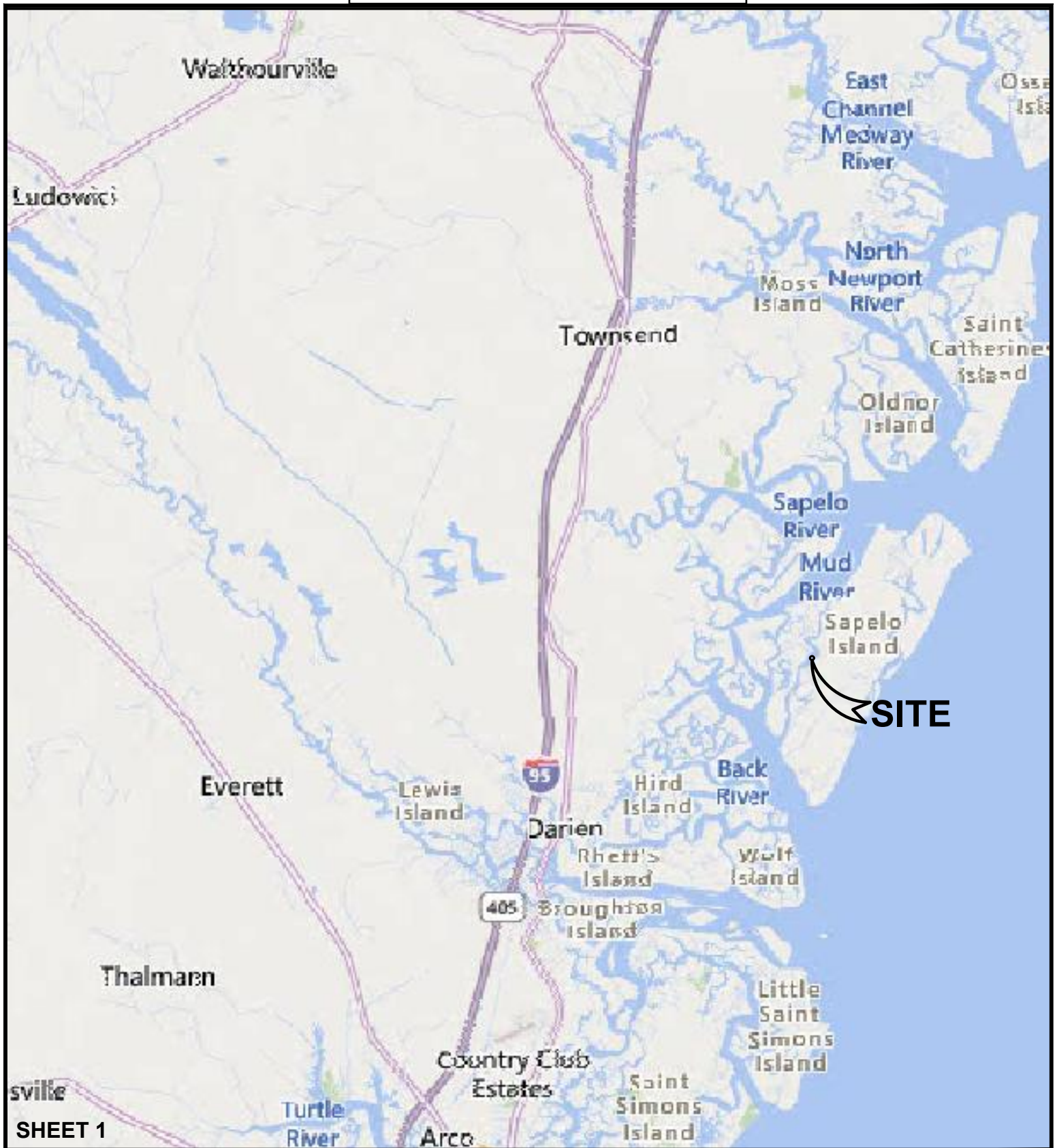


PROJECT DRAWINGS



SHEET 1

EMC ENGINEERING SERVICES, INC.
10 Chatham Center South,
Ste 100
Savannah, GA 31405
Ph: (912) 232-6533
Fax: (912) 233-4580
savannah@emc-eng.com
www.emc-eng.com



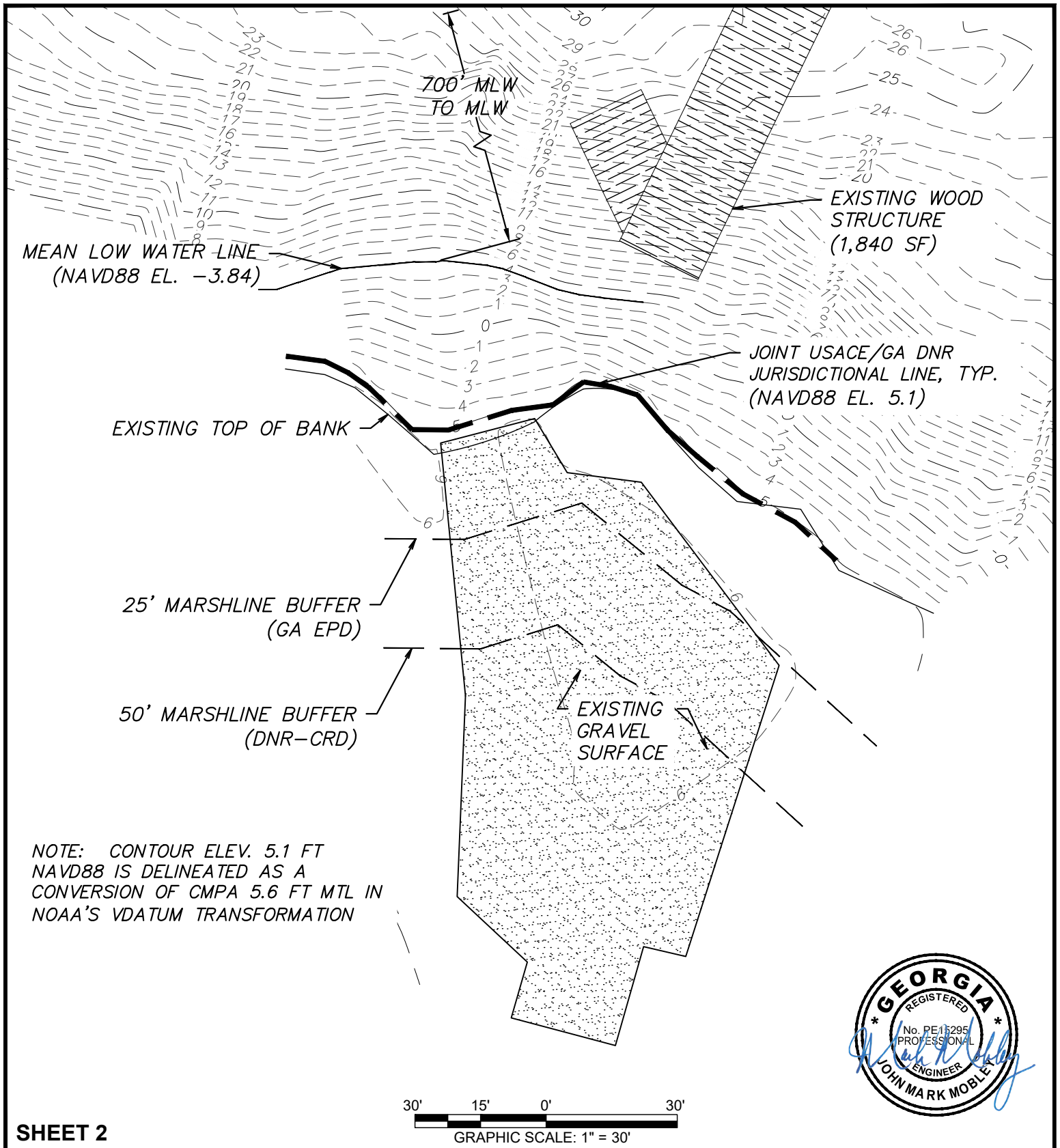
ALBANY • ATLANTA • AUGUSTA • BRUNSWICK
COLUMBUS • SAVANNAH • STATESBORO
THOMASTON • VALDOSTA • WARNER ROBINS

LOCATION MAP

BARGE LANDING IMPROVEMENTS SAPELO ISLAND, MCINTOSH CO., GEORGIA

Prepared for:
GEORGIA DEPARTMENT OF NATURAL RESOURCES

PROJECT NO:	21-0093
DRAWN BY:	CFM
DESIGNED BY:	JMM
SURVEYED BY:	EMC
SURVEY DATE:	AUG. 2021
CHECKED BY:	JMM
SCALE:	N.T.S.
DATE:	SEPT. 2021



SHEET 2

EMC ENGINEERING SERVICES, INC.
 10 Chatham Center South,
 Ste 100
 Savannah, GA 31405
 Ph: (912) 232-6533
 Fax: (912) 233-4580
 savannah@emc-eng.com
 www.emc-eng.com

emc
 CIVIL
 MARINE
 ENVIRONMENTAL

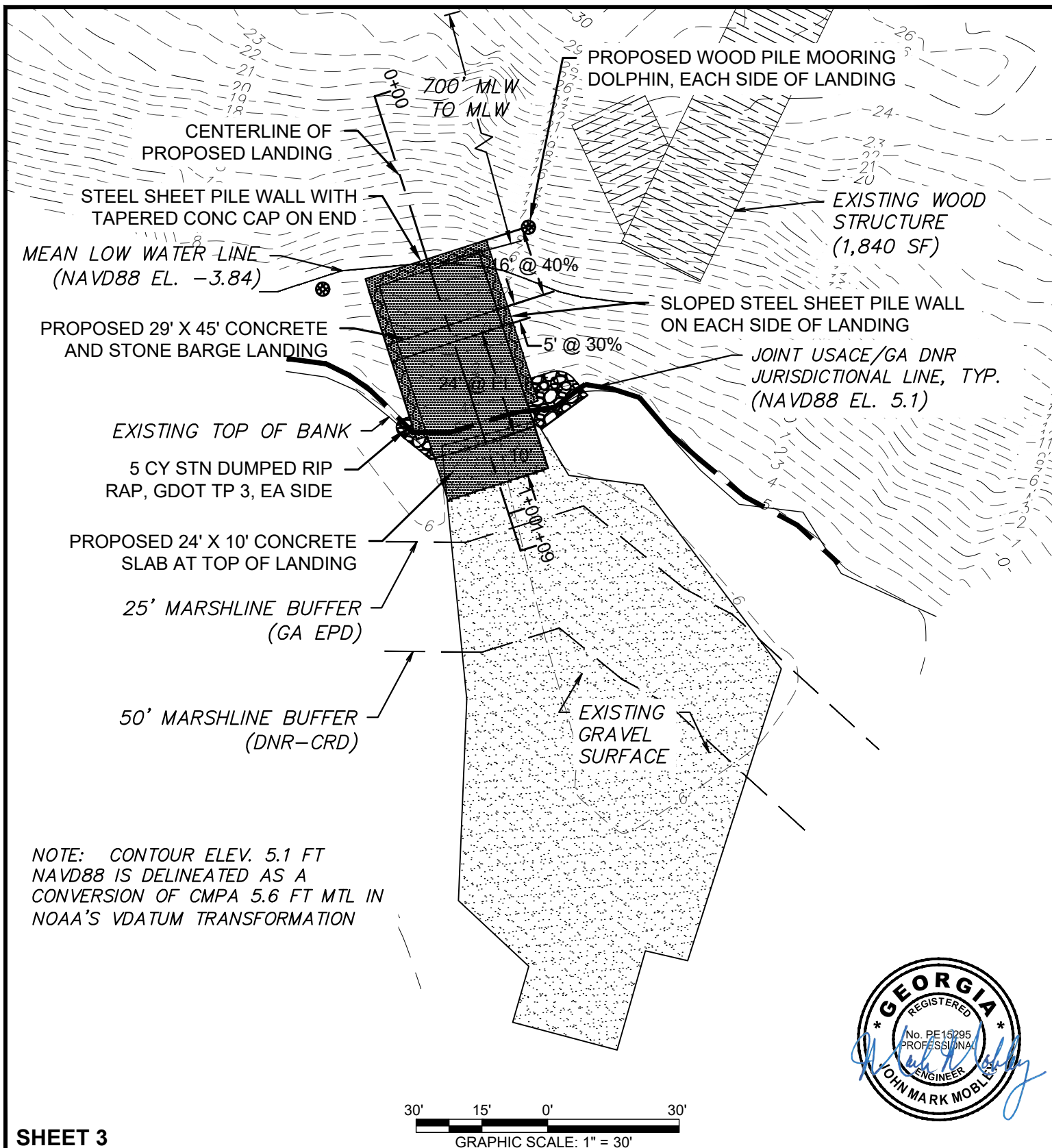
ALBANY • ATLANTA • AUGUSTA • BRUNSWICK
 COLUMBUS • SAVANNAH • STATESBORO
 THOMASTON • VALDOSTA • WARNER ROBINS

EXISTING CONDITIONS

BARGE LANDING IMPROVEMENTS
SAPELO ISLAND, MCINTOSH CO., GEORGIA

Prepared for:
GEORGIA DEPARTMENT OF NATURAL RESOURCES

PROJECT NO:	21-0093
DRAWN BY:	CFM
DESIGNED BY:	JMM
SURVEYED BY:	EMC
SURVEY DATE:	AUG. 2021
CHECKED BY:	JMM
SCALE:	1" = 30'
DATE:	SEPT. 2021



SHEET 3

EMC ENGINEERING SERVICES, INC.
10 Chatham Center South,
Ste 100
Savannah, GA 31405
Ph: (912) 232-6533
Fax: (912) 233-4580
savannah@emc-eng.com
www.emc-eng.com

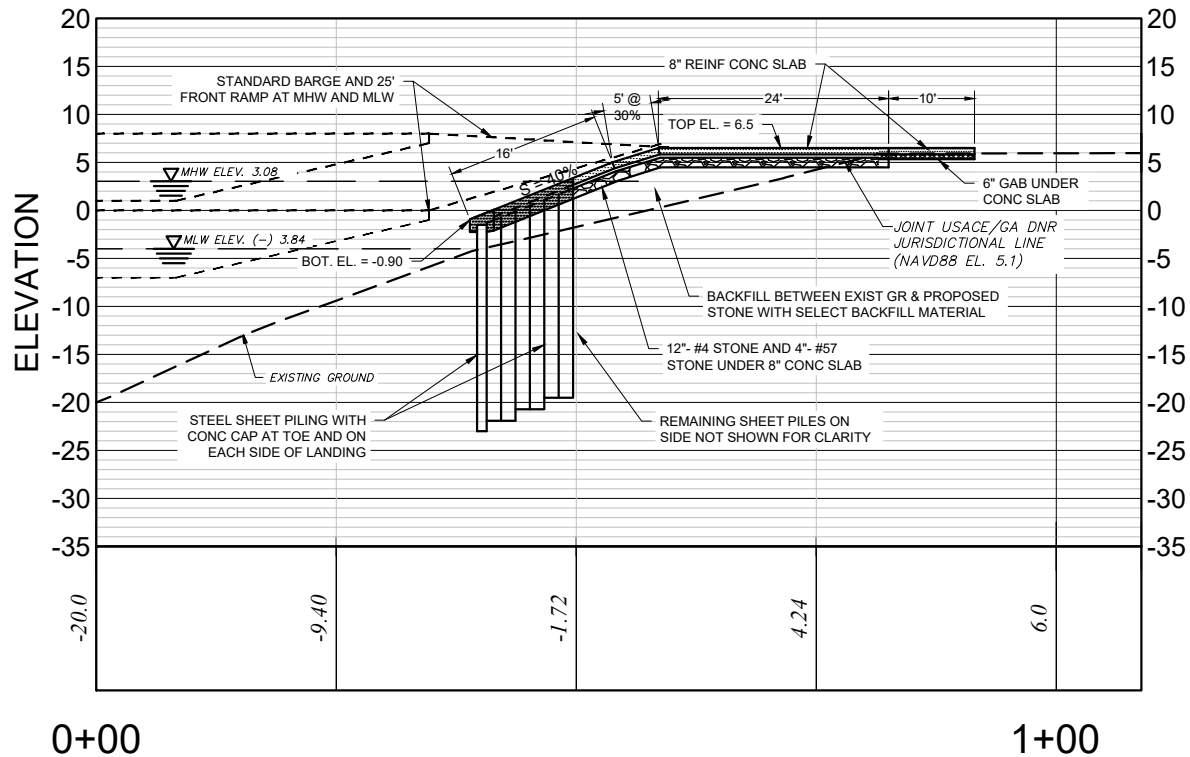
ALBANY • ATLANTA • AUGUSTA • BRUNSWICK
COLUMBUS • SAVANNAH • STATESBORO
THOMASTON • VALDOSTA • WARNER ROBINS

PROPOSED CONDITIONS

BARGE LANDING IMPROVEMENTS
SAPELO ISLAND, MCINTOSH CO., GEORGIA

Prepared for:
GEORGIA DEPARTMENT OF NATURAL RESOURCES

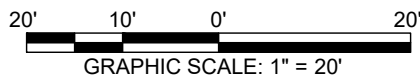
PROJECT NO: 21-0093
DRAWN BY: CFM
DESIGNED BY: JMM
SURVEYED BY: EMC
SURVEY DATE: AUG. 2021
CHECKED BY: JMM
SCALE: 1" = 30'
DATE: SEPT. 2021



LANDING CENTERLINE PROFILE

SCALE: 1" = 20' HORIZ.

1" = 20' VERT.



SHEET 4

EMC ENGINEERING SERVICES, INC.
10 Chatham Center South,
Ste 100
Savannah, GA 31405
Ph: (912) 232-6533
Fax: (912) 233-4580
savannah@emc-eng.com
www.emc-eng.com

emc
CIVIL
MARINE
ENVIRONMENTAL

ALBANY • ATLANTA • AUGUSTA • BRUNSWICK
COLUMBUS • SAVANNAH • STATESBORO
THOMASTON • VALDOSTA • WARNER ROBINS

PROFILE

BARGE LANDING IMPROVEMENTS
SAPELO ISLAND, MCINTOSH CO., GEORGIA

Prepared for:
GEORGIA DEPARTMENT OF NATURAL RESOURCES

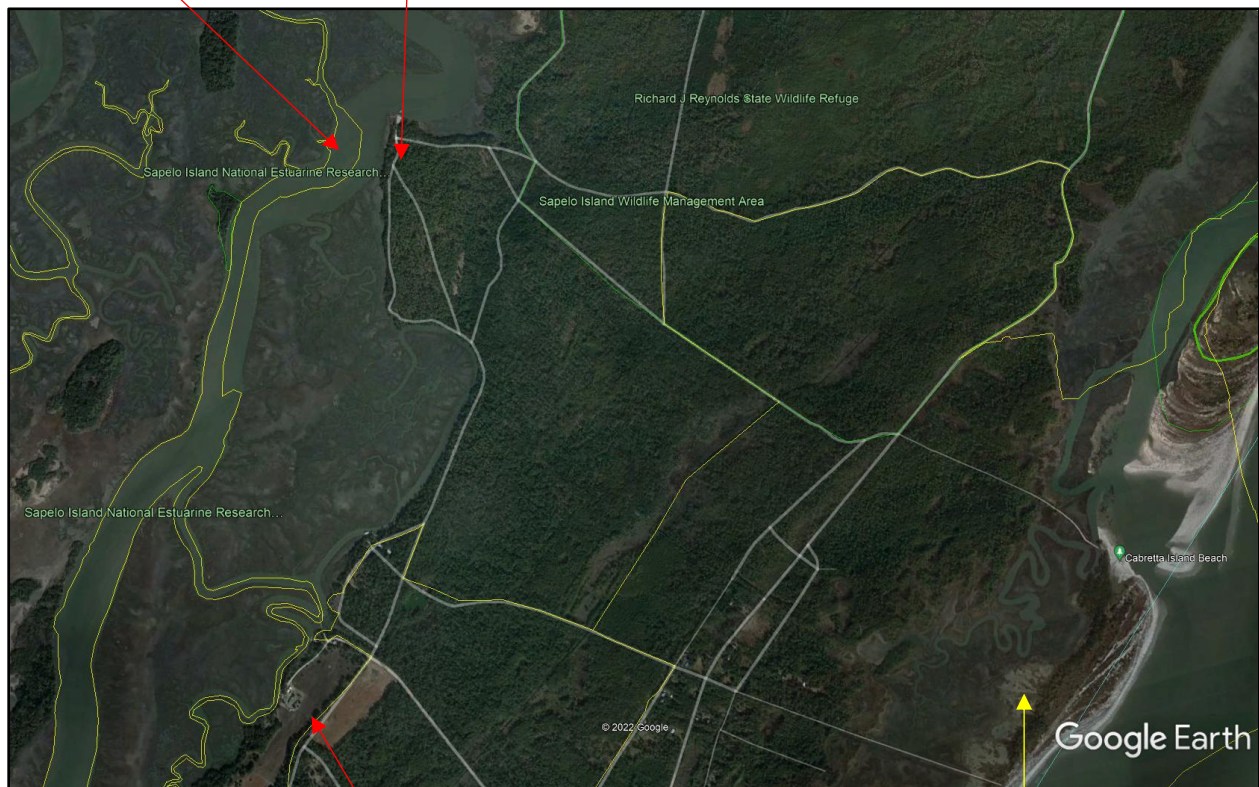
PROJECT NO: 21-0093
DRAWN BY: CFM
DESIGNED BY: JMM
SURVEYED BY: EMC
SURVEY DATE: AUG. 2021
CHECKED BY: JMM
SCALE: 1" = 20'
DATE: SEPT. 2021

SITE PLANS AND RELATED INFORMATION
COASTAL MARSHLANDS PROTECTION PERMIT APPLICATION
BARGE LANDING IMPROVEMENTS
SAPELO ISLAND, GEORGIA

The vicinity maps are below.

PROJECT LOCATION
31.459604, -81.277381

DUPLIN RIVER



NORTH

LONG TABBY

PROJECT LOCATION
31.459604, -81.277381

DUPLIN RIVER

