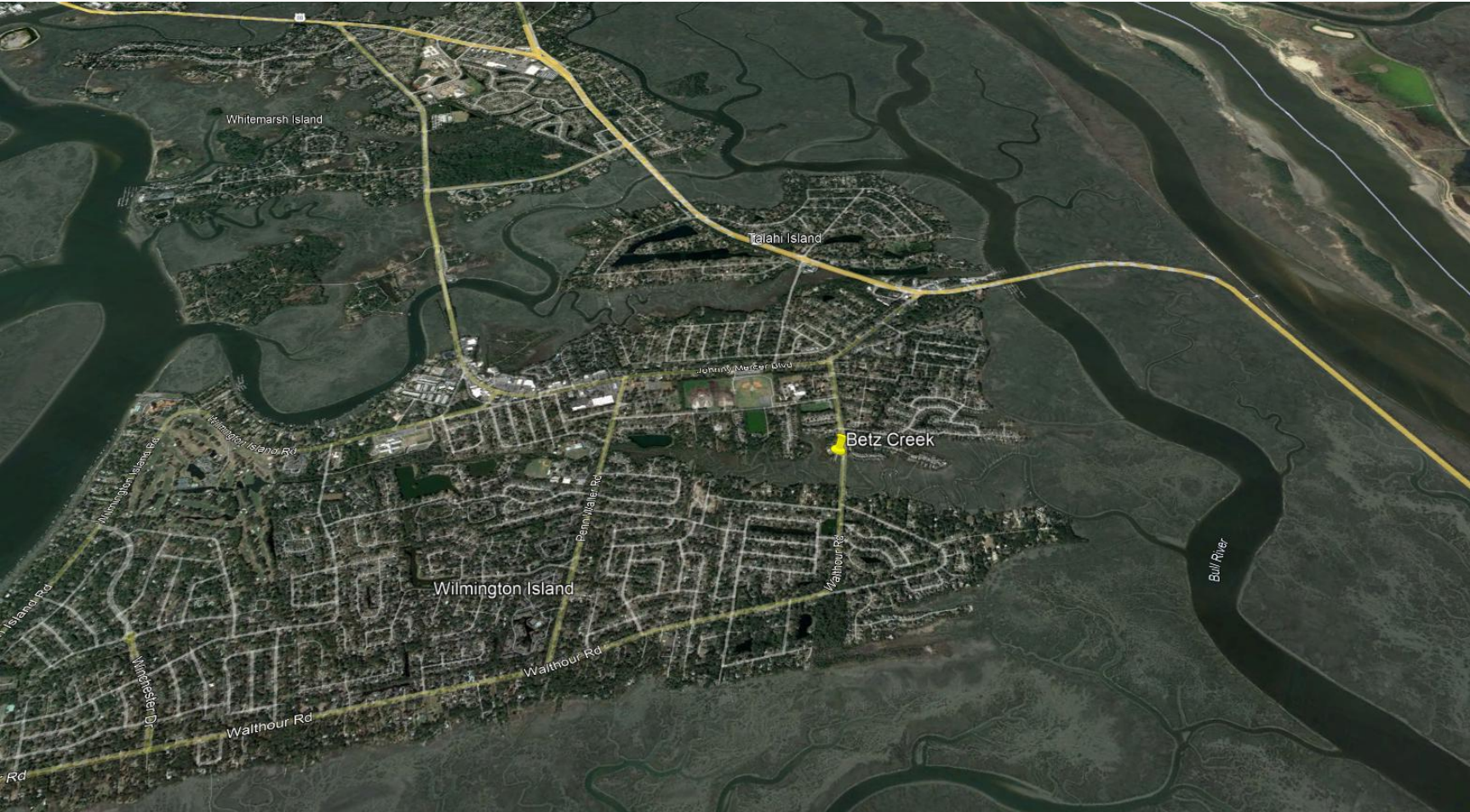


Walthour Road Improvements  
Chatham County Engineering



Walthour Road Project Location on Wilmington Island, Chatham County

Walthour Road Improvements  
Chatham County Engineering



Walthour Road Causeway

Walthour Road Improvements  
Chatham County Engineering



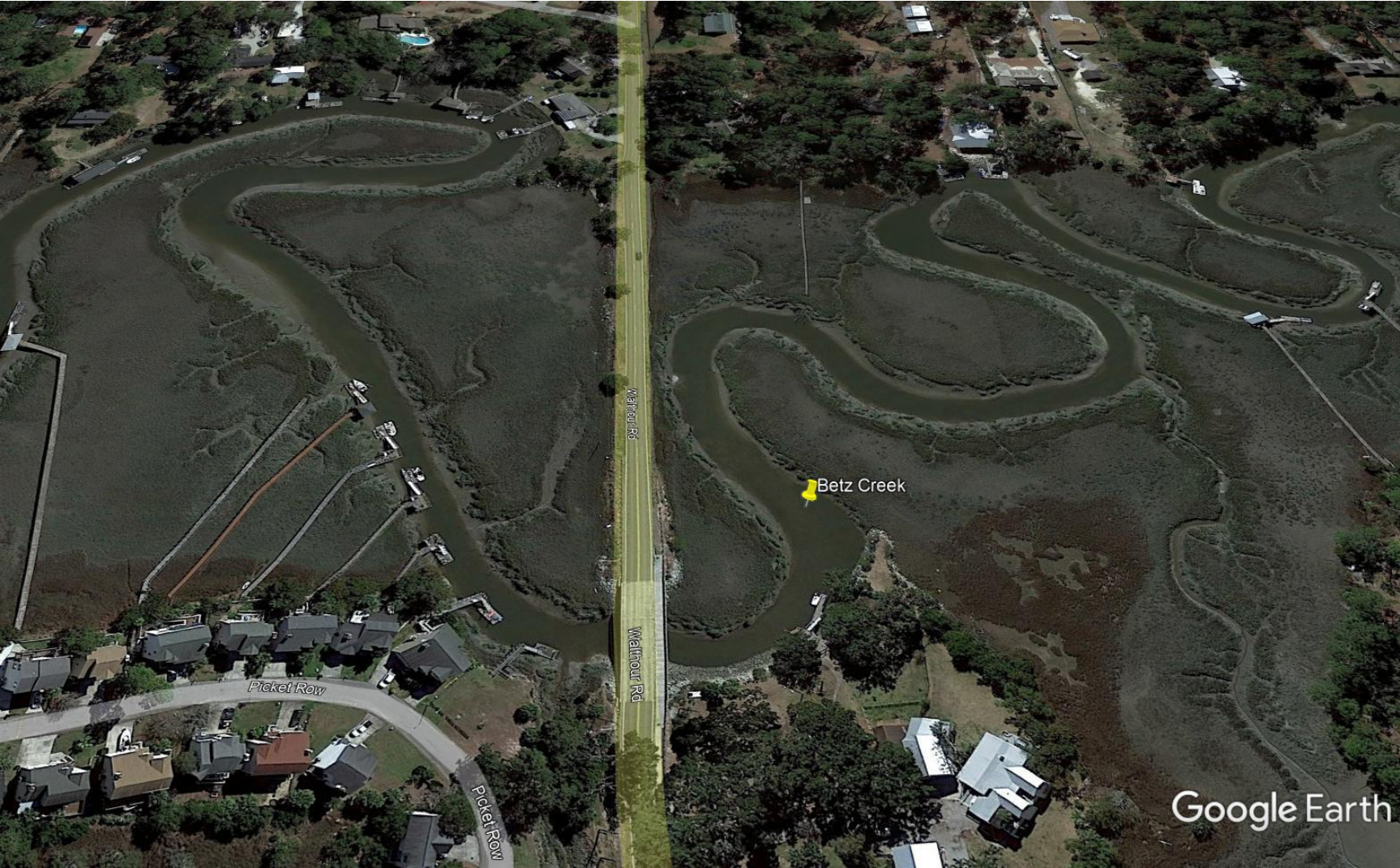
Looking South towards project corridor along Walthour Road Causeway

Walthour Road Improvements  
Chatham County Engineering



Looking north towards Walthour Road Bridge over Betz Creek

Walthour Road Improvements  
Chatham County Engineering



Looking south from Walthour Road Bridge over Betz Creek

Walthour Road Improvements  
Chatham County Engineering



Looking north towards bridge with Betz Creek adjacent to southbound travel lane