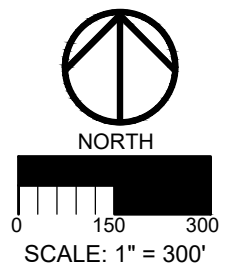


NOTES:

1. BASE INFORMATION TAKEN FROM BOUNDARY SURVEY PERFORMED BY AKM SURVEYING, INC., AND BATHYMETRIC SURVEY PERFORMED BY THOMAS & HUTTON IN APRIL 2014. BATHYMETRIC CONTOURS ARE MEASURED IN FEET, REFERENCED TO MLW AND REPRESENT THE CONDITIONS AT THE TIME OF THE SURVEY.
2. THE SCOPE OF WORK INCLUDES THE CONSTRUCTION OF A COMMERCIAL MARINA INCLUDING WETSLIPS AND DRYSTACK STORAGE AS WELL AS A BOAT MAINTENANCE FACILITY WITH HAUL OUT CAPABILITIES.
3. SEE SHEETS 5 THRU X FOR ENLARGED VIEWS OF PROPOSED IMPROVEMENTS.

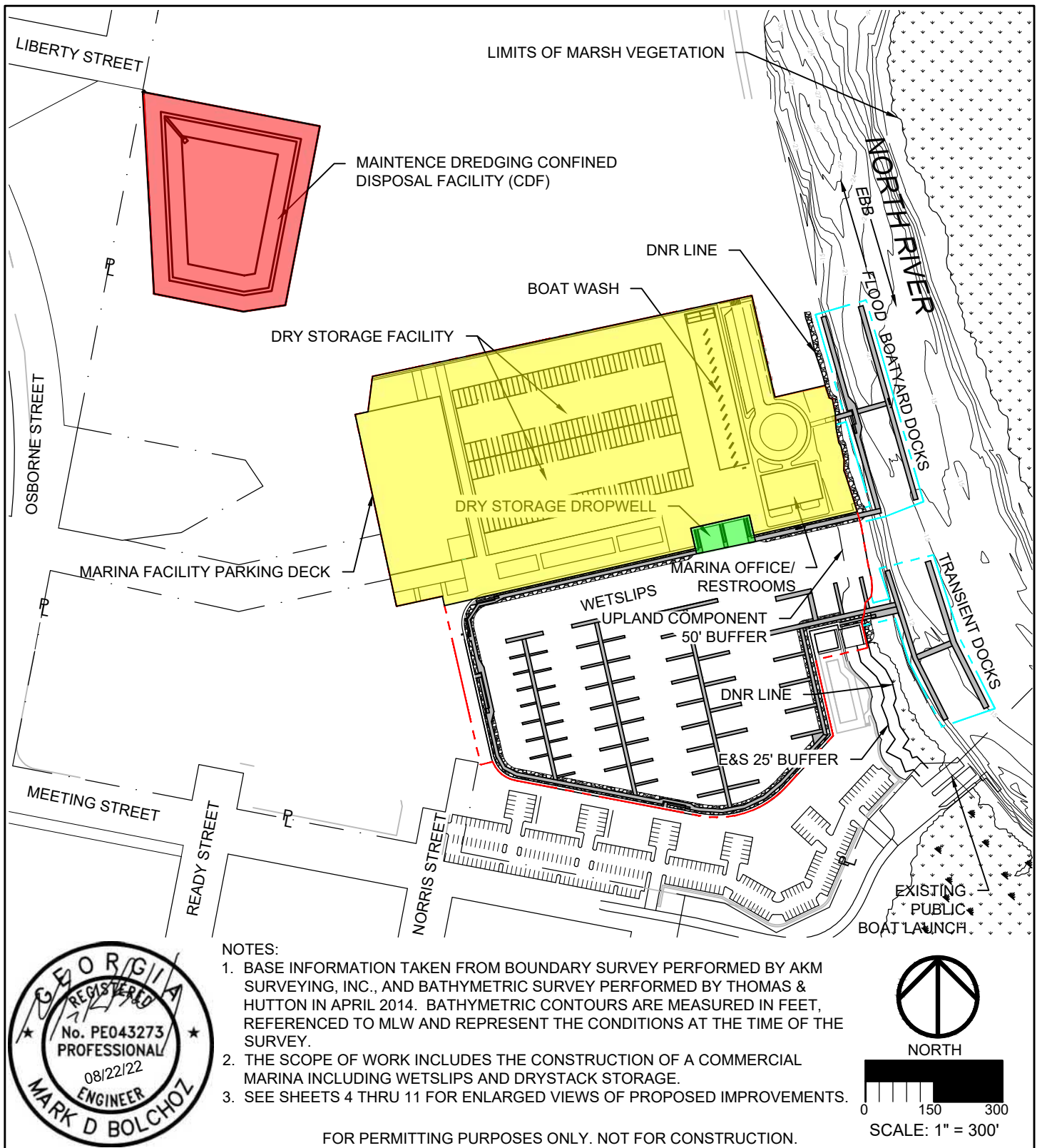
FOR PERMITTING PURPOSES ONLY. NOT FOR CONSTRUCTION.



PURPOSE: VESSEL BERTHING AND MAINTENANCE
 DATUM: MLW
 APPLICATION BY: CAMDEN COUNTY JOINT
 DEVELOPMENT AUTHORITY
 ADJACENT PROPERTY OWNERS: SEE ATTACHED
 DATE: 06/04/18

THE WHARF AT ST. MARY'S
**PROPOSED IMPROVEMENTS
 OVERALL VIEW**
 CAMDEN COUNTY JDA
 531 N. LEE STREET
 KINGSLAND, GA 31548

PROPOSED: COMMERCIAL MARINA
 IN: NORTH RIVER
 AT: ST. MARY'S NORTH OF E. MEETING
 STREET PUBLIC BOAT LAUNCH
 COUNTY OF: CAMDEN
 STATE: GEORGIA
 SHEET 3



PURPOSE: COMMERCIAL/RECREATIONAL
 DATUM: MLW
 APPLICATION BY: CAMDEN COUNTY JOINT
 DEVELOPMENT AUTHORITY

DATE: 08/22/22

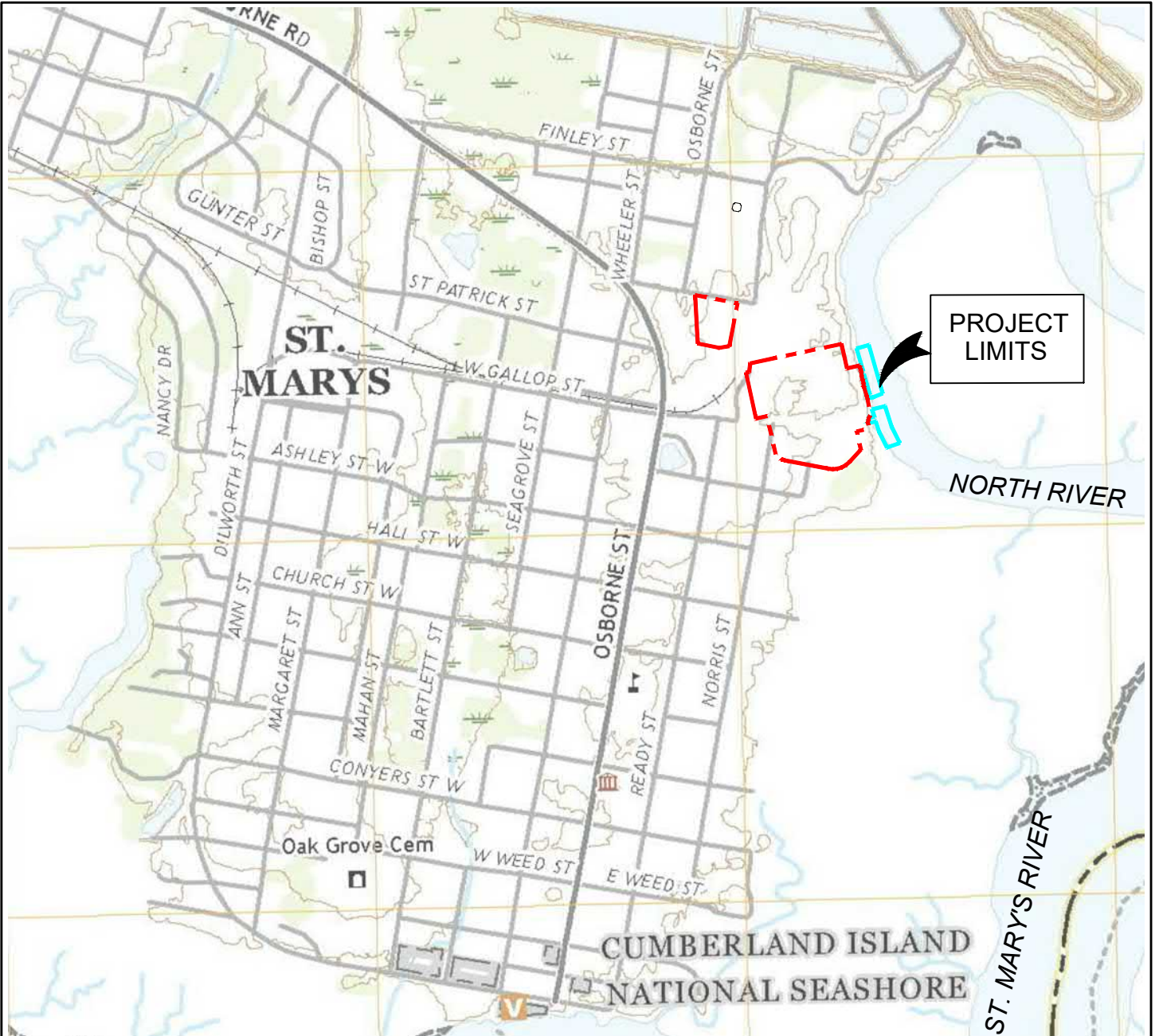
WHARF ST. MARY'S PROPOSED IMPROVEMENTS OVERALL VIEW

CAMDEN COUNTY JDA
 531 N. LEE STREET
 KINGSLAND, GA 31548

PROPOSED: COMMERCIAL MARINA

IN: NORTH RIVER
 AT: ST. MARY'S NORTH OF E. MEETING
 STREET PUBLIC BOAT LAUNCH
 COUNTY OF: CAMDEN
 STATE: GEORGIA

SHEET 3



SOURCE: USGS 7.5 MIN. TOPOGRAPHIC QUADRANGLE "SAINT MARYS, GA-FL"



FOR PERMITTING PURPOSES ONLY. NOT FOR CONSTRUCTION.

PURPOSE: COMMERCIAL/RECREATIONAL
 DATUM: MLW
 APPLICATION BY: CAMDEN COUNTY JOINT
 DEVELOPMENT AUTHORITY

DATE: 08/22/22

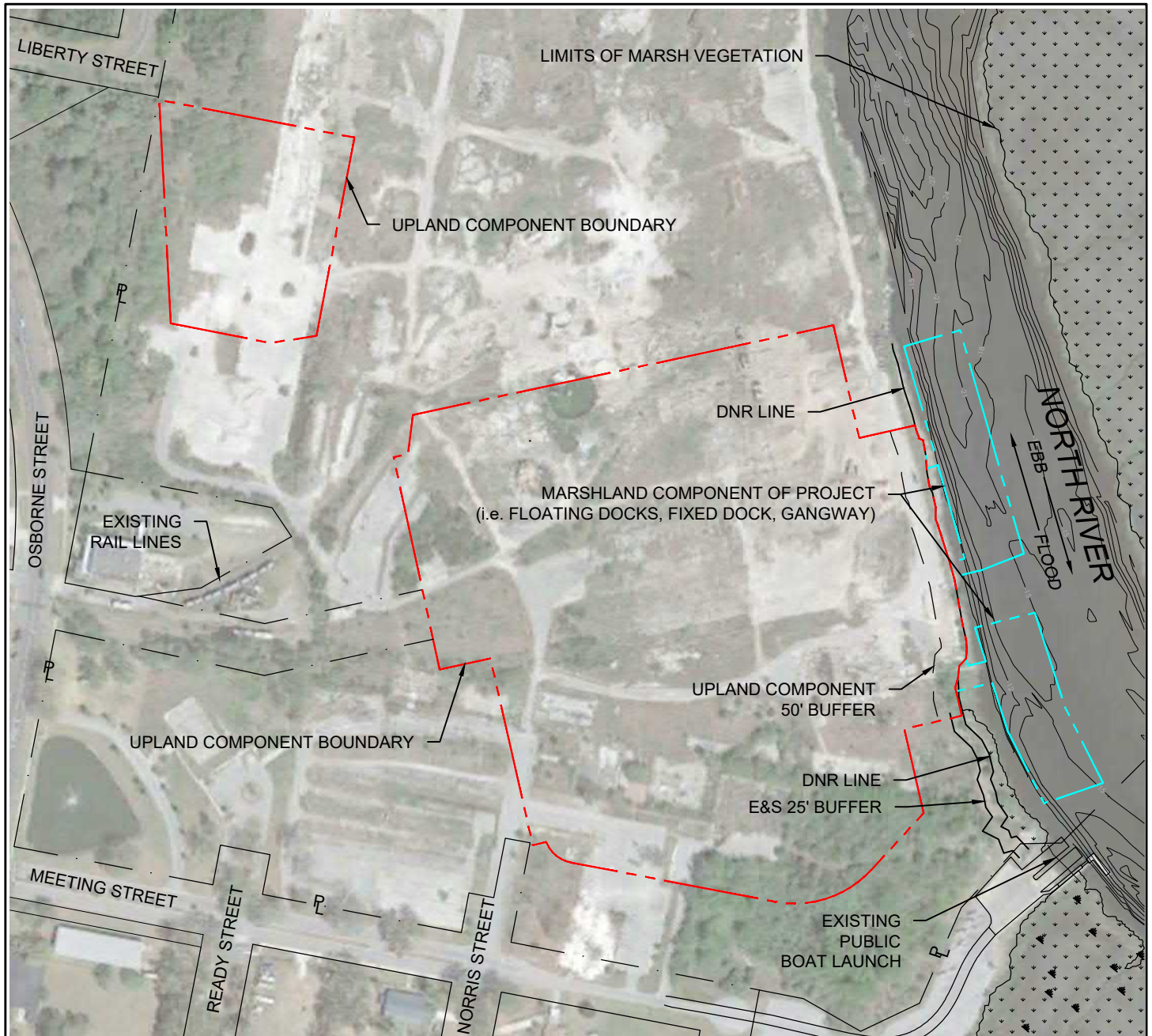
WHARF ST. MARY'S LOCATION MAP

CAMDEN COUNTY JDA
 531 N. LEE STREET
 KINGSLAND, GA 31548

PROPOSED: COMMERCIAL MARINA

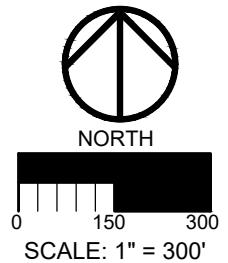
IN: NORTH RIVER
 AT: ST. MARY'S NORTH OF E. MEETING
 STREET PUBLIC BOAT LAUNCH
 COUNTY OF: CAMDEN
 STATE: GEORGIA

SHEET 1



NOTES:

1. BASE INFORMATION TAKEN FROM BOUNDARY SURVEY PERFORMED BY AKM SURVEYING, INC., AND BATHYMETRIC SURVEY PERFORMED BY THOMAS & HUTTON IN APRIL 2014. BATHYMETRIC CONTOURS ARE MEASURED IN FEET, REFERENCED TO MLW AND REPRESENT THE CONDITIONS AT THE TIME OF THE SURVEY.
2. THE SCOPE OF WORK INCLUDES THE CONSTRUCTION OF A COMMERCIAL MARINA INCLUDING WETSLIPS AND DRYSTACK STORAGE.
3. SEE SHEET 3 THRU 11 FOR PROPOSED IMPROVEMENTS.



FOR PERMITTING PURPOSES ONLY. NOT FOR CONSTRUCTION.

PURPOSE: COMMERCIAL/RECREATIONAL
 DATUM: MLW
 APPLICATION BY: CAMDEN COUNTY JOINT
 DEVELOPMENT AUTHORITY

DATE: 08/22/22

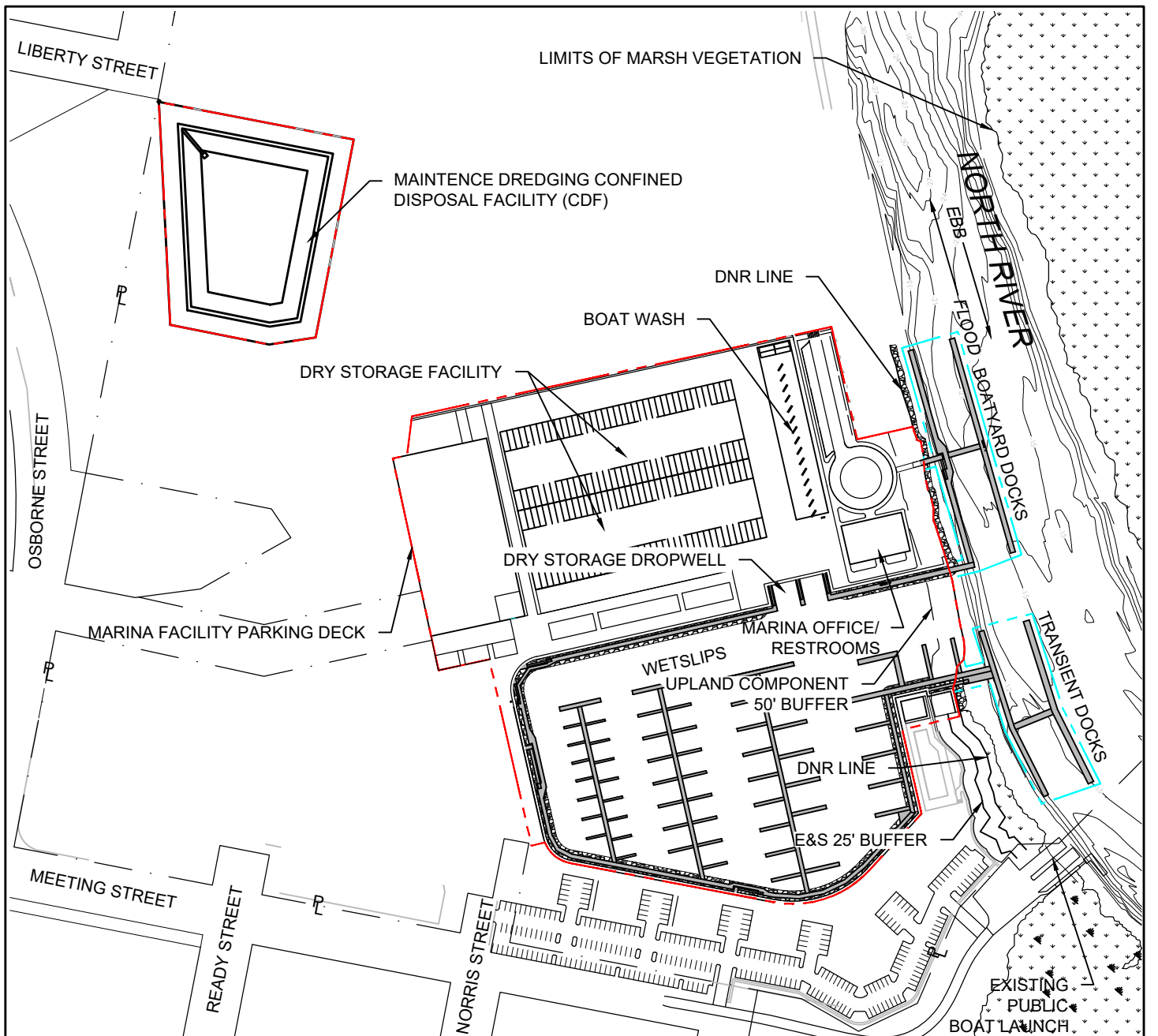
WHARF ST.MARY'S
 EXISTING CONDITIONS

CAMDEN COUNTY JDA
 531 N. LEE STREET
 KINGSLAND, GA 31548

PROPOSED: COMMERCIAL MARINA

IN: NORTH RIVER
 AT: ST. MARY'S NORTH OF E. MEETING
 STREET PUBLIC BOAT LAUNCH
 COUNTY OF: CAMDEN
 STATE: GEORGIA

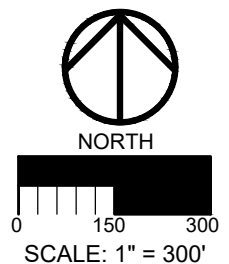
SHEET 2



NOTES:

1. BASE INFORMATION TAKEN FROM BOUNDARY SURVEY PERFORMED BY AKM SURVEYING, INC., AND BATHYMETRIC SURVEY PERFORMED BY THOMAS & HUTTON IN APRIL 2014. BATHYMETRIC CONTOURS ARE MEASURED IN FEET, REFERENCED TO MLW AND REPRESENT THE CONDITIONS AT THE TIME OF THE SURVEY.
2. THE SCOPE OF WORK INCLUDES THE CONSTRUCTION OF A COMMERCIAL MARINA INCLUDING WETSLIPS AND DRYSTACK STORAGE.
3. SEE SHEETS 4 THRU 11 FOR ENLARGED VIEWS OF PROPOSED IMPROVEMENTS.

FOR PERMITTING PURPOSES ONLY. NOT FOR CONSTRUCTION.



PURPOSE: COMMERCIAL/RECREATIONAL
 DATUM: MLW
 APPLICATION BY: CAMDEN COUNTY JOINT
 DEVELOPMENT AUTHORITY

DATE: 08/22/22

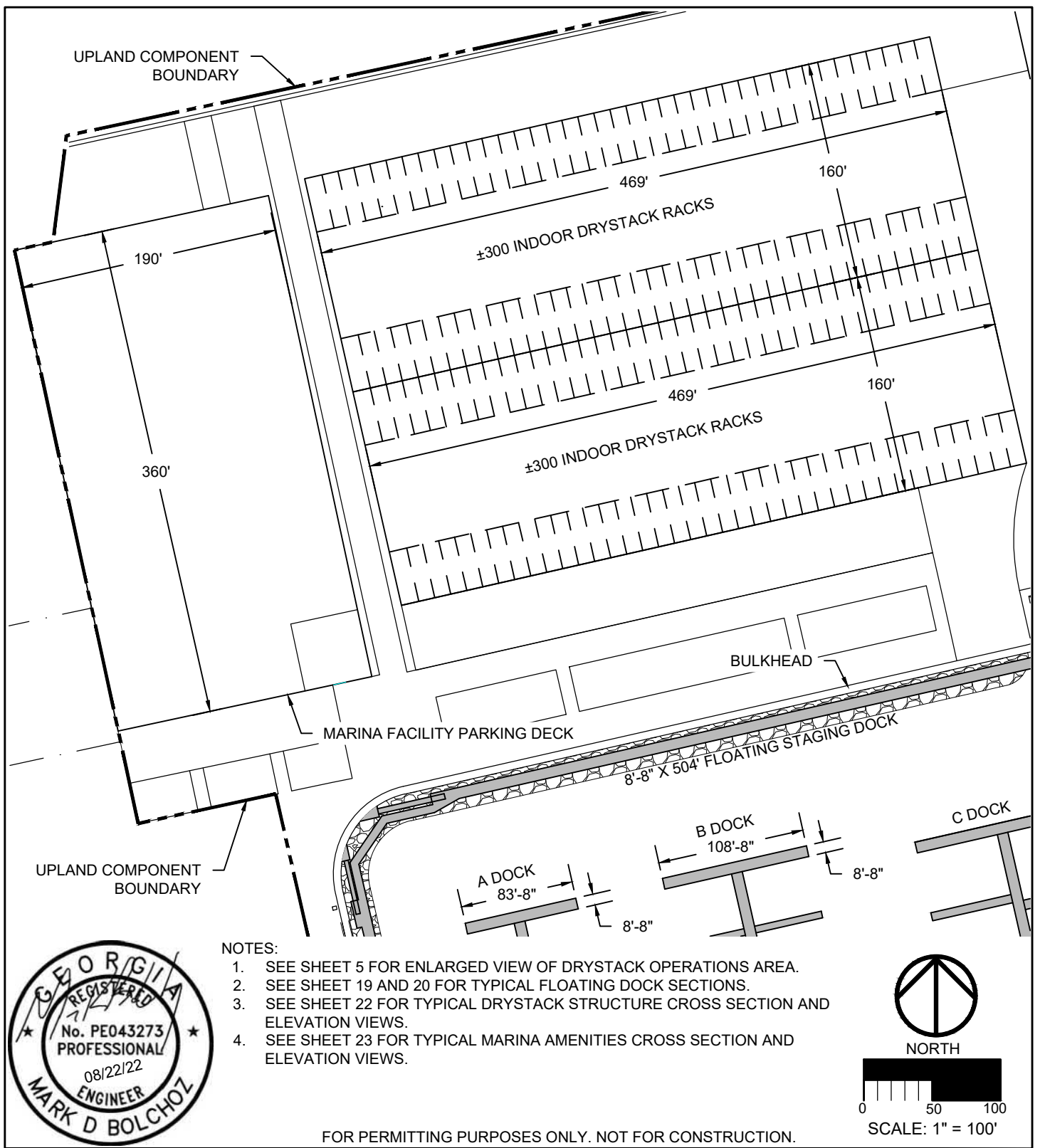
WHARF ST. MARY'S
**PROPOSED IMPROVEMENTS
 OVERALL VIEW**

CAMDEN COUNTY JDA
 531 N. LEE STREET
 KINGSLAND, GA 31548

PROPOSED: COMMERCIAL MARINA

IN: NORTH RIVER
 AT: ST. MARY'S NORTH OF E. MEETING
 STREET PUBLIC BOAT LAUNCH
 COUNTY OF: CAMDEN
 STATE: GEORGIA

SHEET 3



PURPOSE: COMMERCIAL/RECREATIONAL
 DATUM: MLW
 APPLICATION BY: CAMDEN COUNTY JOINT
 DEVELOPMENT AUTHORITY

DATE: 08/22/22

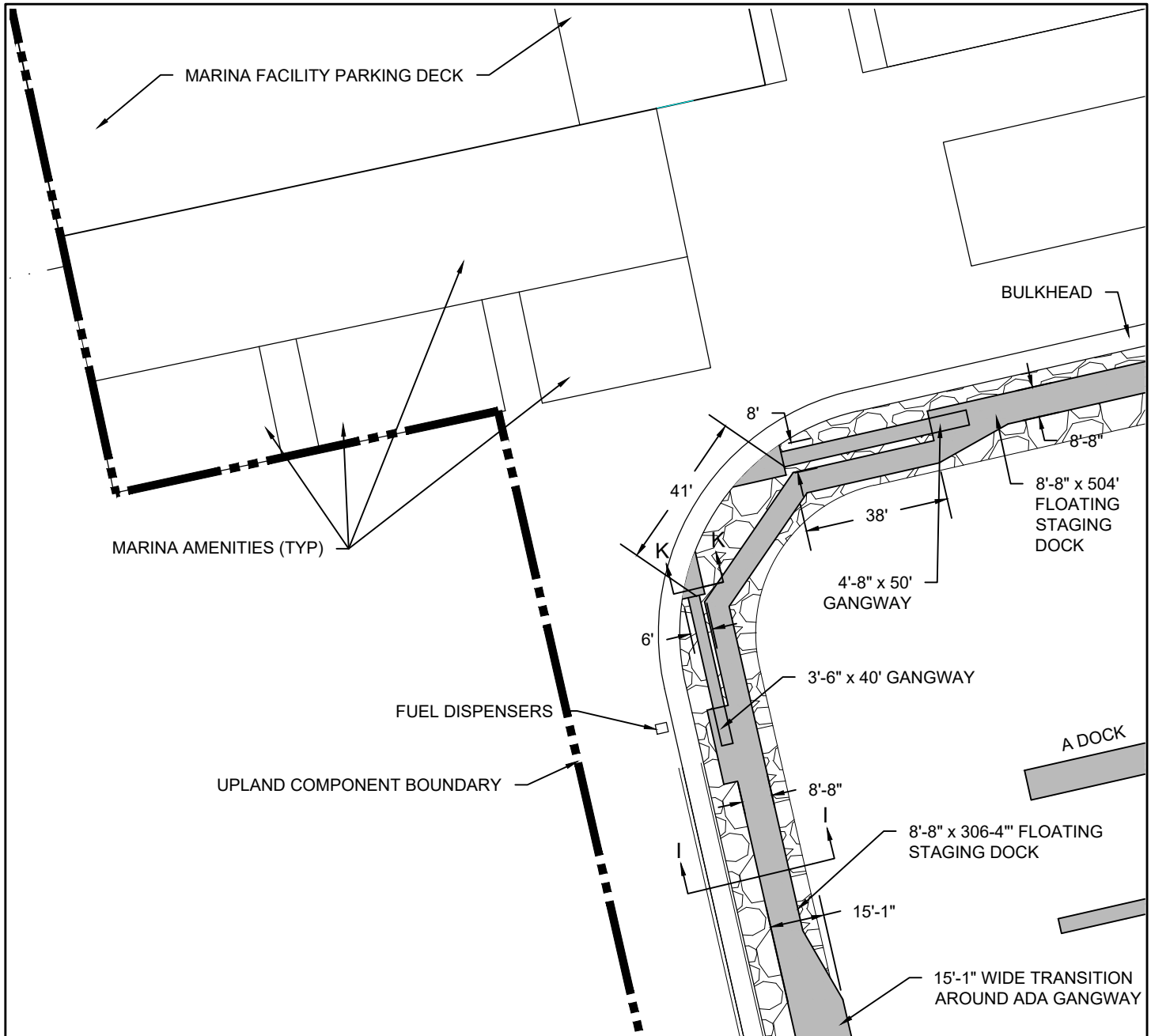
WHARF ST. MARY'S DRYSTACK & MARINA PARKING FACILITIES

CAMDEN COUNTY JDA
 531 N. LEE STREET
 KINGSLAND, GA 31548

PROPOSED: COMMERCIAL MARINA

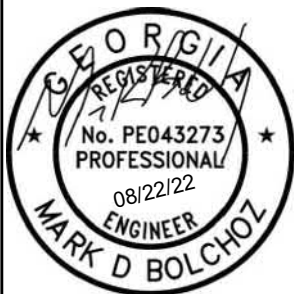
IN: NORTH RIVER
 AT: ST. MARY'S NORTH OF E. MEETING
 STREET PUBLIC BOAT LAUNCH
 COUNTY OF: CAMDEN
 STATE: GEORGIA

SHEET 4

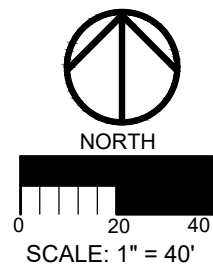


NOTES:

1. SEE SHEET 16 FOR CROSS SECTION I - I AND SHEET 18 FOR CROSS SECTION K - K.
2. SEE SHEET 19 AND 20 FOR TYPICAL FLOATING DOCK SECTIONS.



FOR PERMITTING PURPOSES ONLY. NOT FOR CONSTRUCTION.



PURPOSE: COMMERCIAL/RECREATIONAL
 DATUM: MLW
 APPLICATION BY: CAMDEN COUNTY JOINT
 DEVELOPMENT AUTHORITY

DATE: 08/22/22

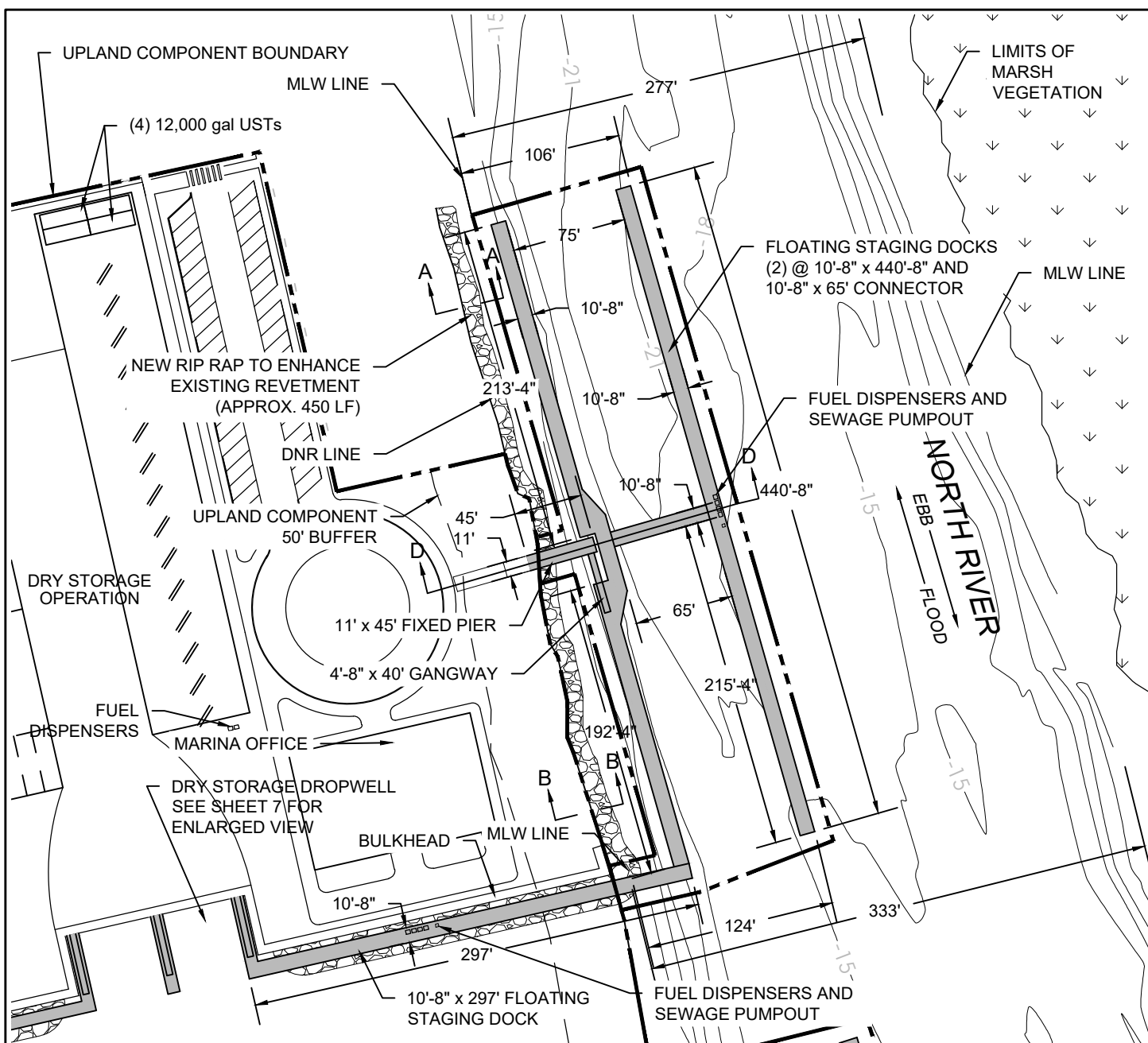
WHARF ST. MARY'S
 DRYSTACK
 OPERATIONS AREA

CAMDEN COUNTY JDA
 531 N. LEE STREET
 KINGSLAND, GA 31548

PROPOSED: COMMERCIAL MARINA

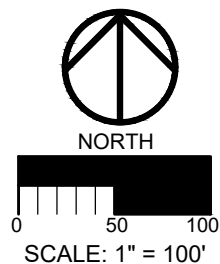
IN: NORTH RIVER
 AT: ST. MARY'S NORTH OF E. MEETING
 STREET PUBLIC BOAT LAUNCH
 COUNTY OF: CAMDEN
 STATE: GEORGIA

SHEET 5



NOTES:

1. SEE SHEET 7 FOR ENLARGED VIEW OF DROPWELL FACILITIES.
2. SEE SHEET 12 FOR CROSS SECTIONS A - A AND B - B. SEE SHEET 13 FOR CROSS SECTION D - D.
3. SEE SHEETS 19 AND 20 FOR TYPICAL FLOATING DOCK CROSS SECTIONS.



FOR PERMITTING PURPOSES ONLY. NOT FOR CONSTRUCTION.

PURPOSE: COMMERCIAL/RECREATIONAL
 DATUM: MLW
 APPLICATION BY: CAMDEN COUNTY JOINT
 DEVELOPMENT AUTHORITY

DATE: 08/22/22

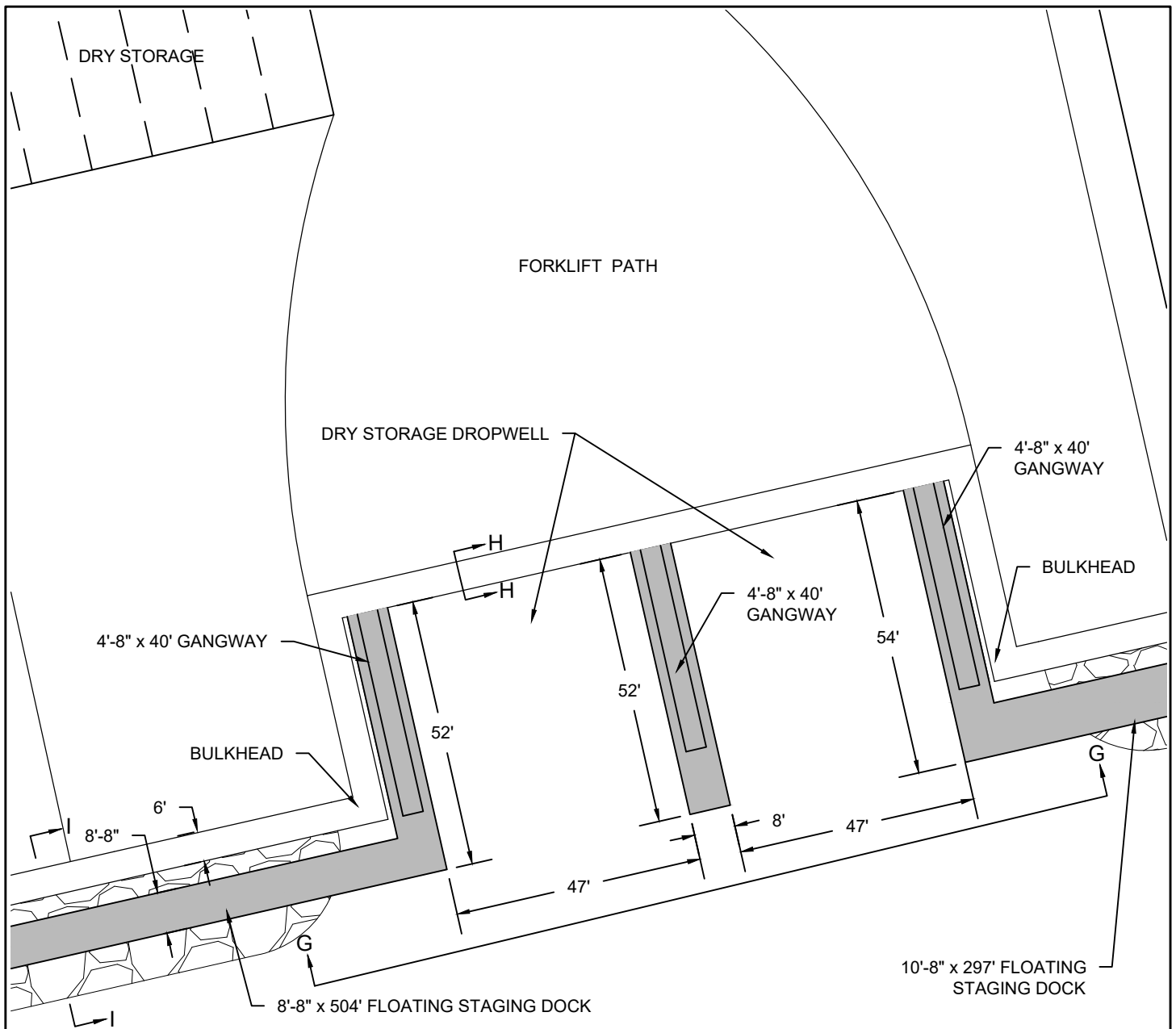
WHARF ST. MARY'S
 DRY STORAGE
 FACILITIES & DOCKS

CAMDEN COUNTY JDA
 531 N. LEE STREET
 KINGSLAND, GA 31548

PROPOSED: COMMERCIAL MARINA

IN: NORTH RIVER
 AT: ST. MARY'S NORTH OF E. MEETING
 STREET PUBLIC BOAT LAUNCH
 COUNTY OF: CAMDEN
 STATE: GEORGIA

SHEET 6

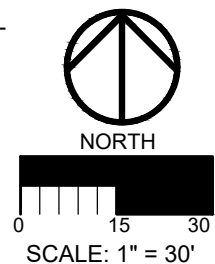


NOTES:

1. SEE SHEET 14 FOR CROSS SECTION G - G, SHEET 15 FOR CROSS SECTION H - H, AND SHEET 16 FOR CROSS SECTION I - I.
2. SEE SHEETS 19 AND 20 FOR TYPICAL FLOATING DOCK SECTIONS.



FOR PERMITTING PURPOSES ONLY. NOT FOR CONSTRUCTION.



PURPOSE: COMMERCIAL/RECREATIONAL
 DATUM: MLW
 APPLICATION BY: CAMDEN COUNTY JOINT
 DEVELOPMENT AUTHORITY

DATE: 08/22/22

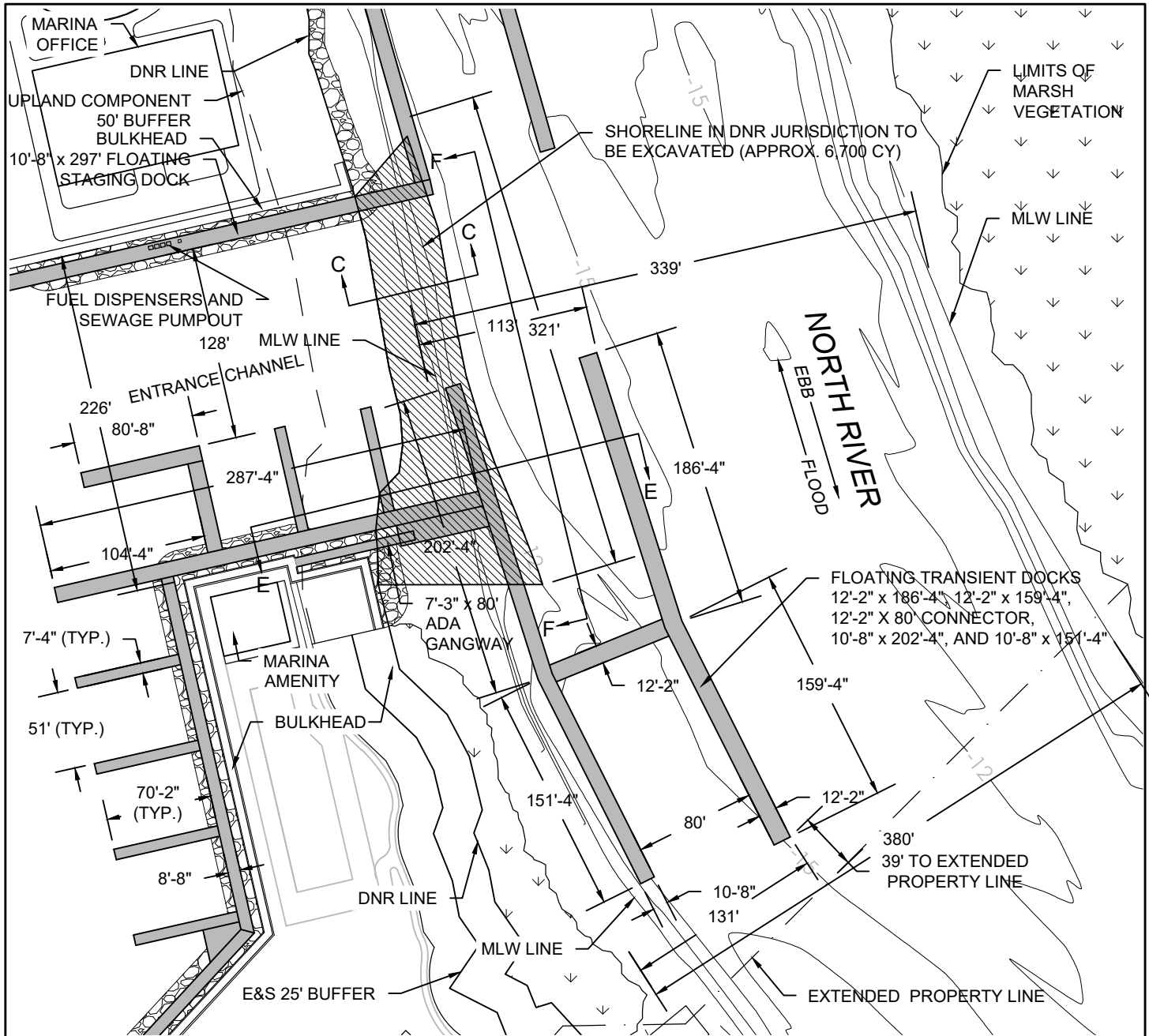
WHARF ST.MARY'S
 DROPWELL FACILITIES
 ENLARGED VIEW

CAMDEN COUNTY JDA
 531 N. LEE STREET
 KINGSLAND, GA 31548

PROPOSED: COMMERCIAL MARINA

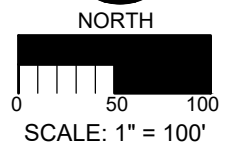
IN: NORTH RIVER
 AT: ST. MARY'S NORTH OF E. MEETING
 STREET PUBLIC BOAT LAUNCH
 COUNTY OF: CAMDEN
 STATE: GEORGIA

SHEET 7



NOTES:

1. SEE SHEET 9 FOR ENLARGED VIEW OF FUEL DOCK / E DOCK AND MARINA AMENITIES.
2. SEE SHEET 12 FOR CROSS SECTION C - C, SHEET 13 FOR CROSS SECTION D - D, AND SHEET 14 FOR CROSS SECTION F - F.
3. SEE SHEETS 19 AND 20 FOR TYPICAL FLOATING DOCK SECTIONS.



FOR PERMITTING PURPOSES ONLY. NOT FOR CONSTRUCTION.

PURPOSE: COMMERCIAL/RECREATIONAL
 DATUM: MLW
 APPLICATION BY: CAMDEN COUNTY JOINT
 DEVELOPMENT AUTHORITY

DATE: 08/22/22

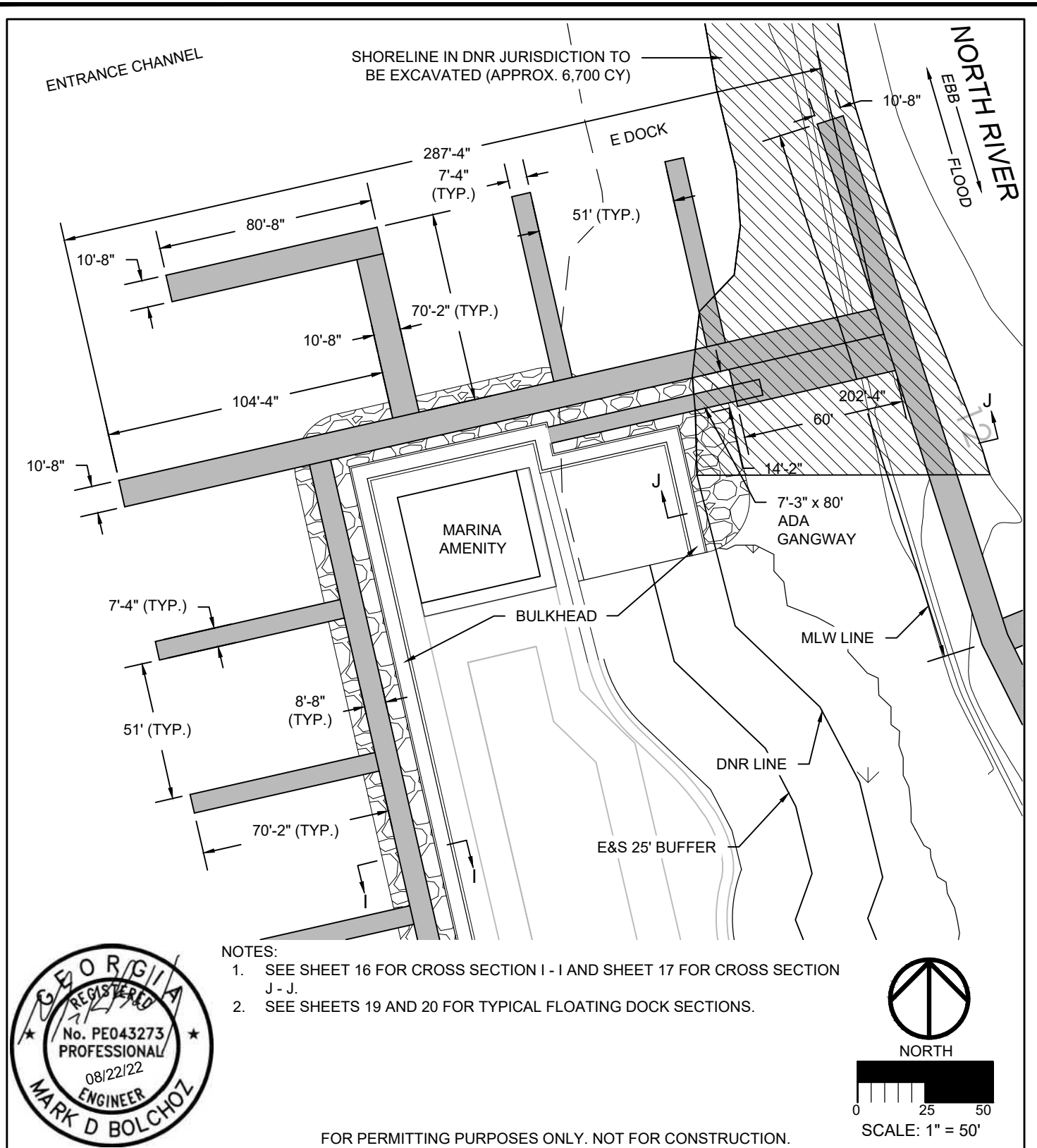
WHARF ST. MARY'S
 TRANSIENT DOCKS, WETSLIPS
 & ENTRANCE CHANNEL

CAMDEN COUNTY JDA
 531 N. LEE STREET
 KINGSLAND, GA 31548

PROPOSED: COMMERCIAL MARINA

IN: NORTH RIVER
 AT: ST. MARY'S NORTH OF E. MEETING
 STREET PUBLIC BOAT LAUNCH
 COUNTY OF: CAMDEN
 STATE: GEORGIA

SHEET 8



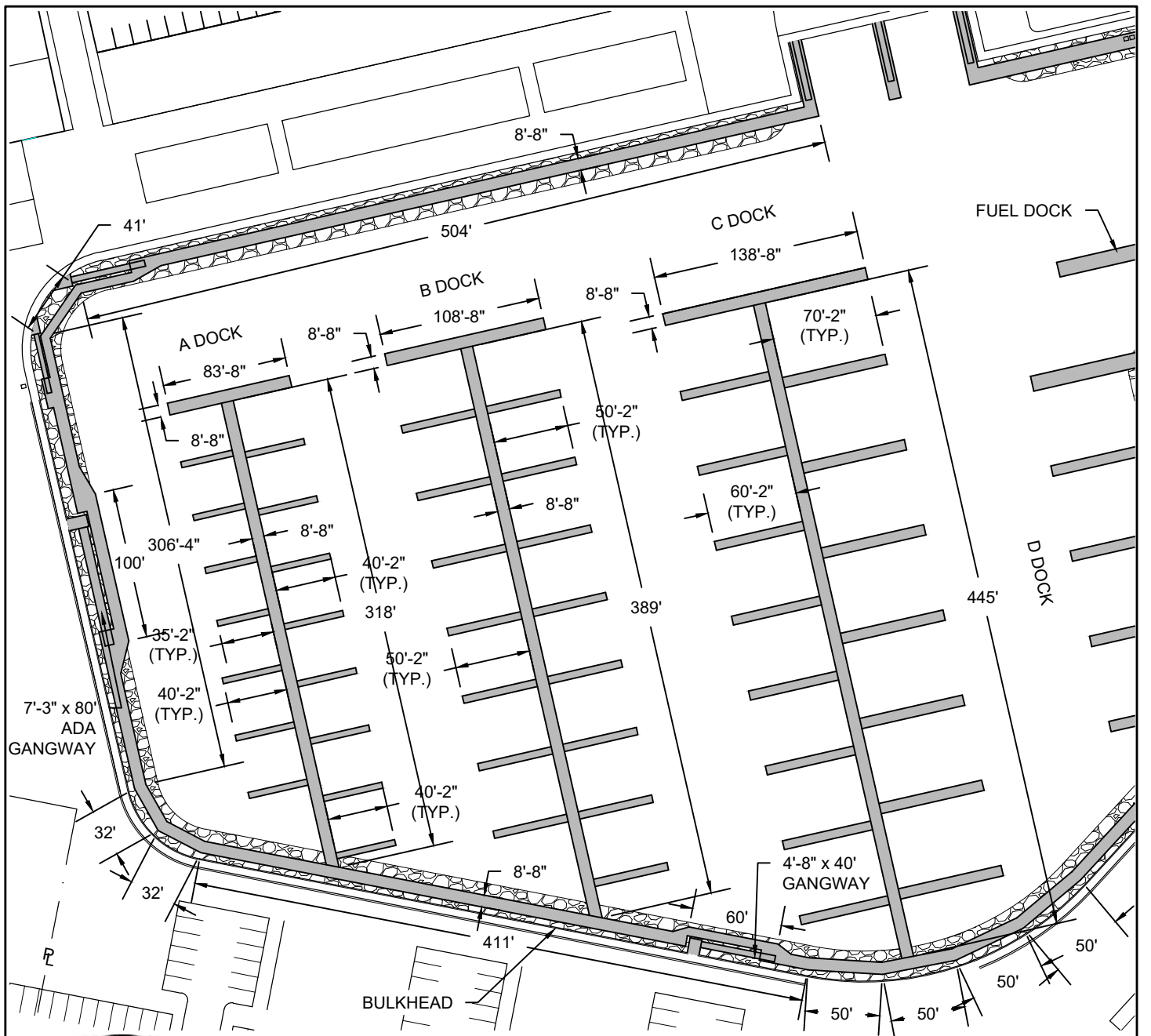
PURPOSE: COMMERCIAL/RECREATIONAL
 DATUM: MLW
 APPLICATION BY: CAMDEN COUNTY JOINT
 DEVELOPMENT AUTHORITY

DATE: 08/22/22

WHARF ST. MARY'S
 E DOCK
 & FUEL DOCK
 CAMDEN COUNTY JDA
 531 N. LEE STREET
 KINGSLAND, GA 31548

PROPOSED: COMMERCIAL MARINA
 IN: NORTH RIVER
 AT: ST. MARY'S NORTH OF E. MEETING
 STREET PUBLIC BOAT LAUNCH
 COUNTY OF: CAMDEN
 STATE: GEORGIA

SHEET 9

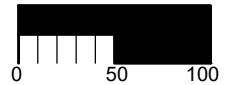


NOTES:

1. SEE SHEETS 19 AND 20 FOR TYPICAL FLOATING DOCK SECTIONS.



NORTH



SCALE: 1" = 100'

FOR PERMITTING PURPOSES ONLY. NOT FOR CONSTRUCTION.

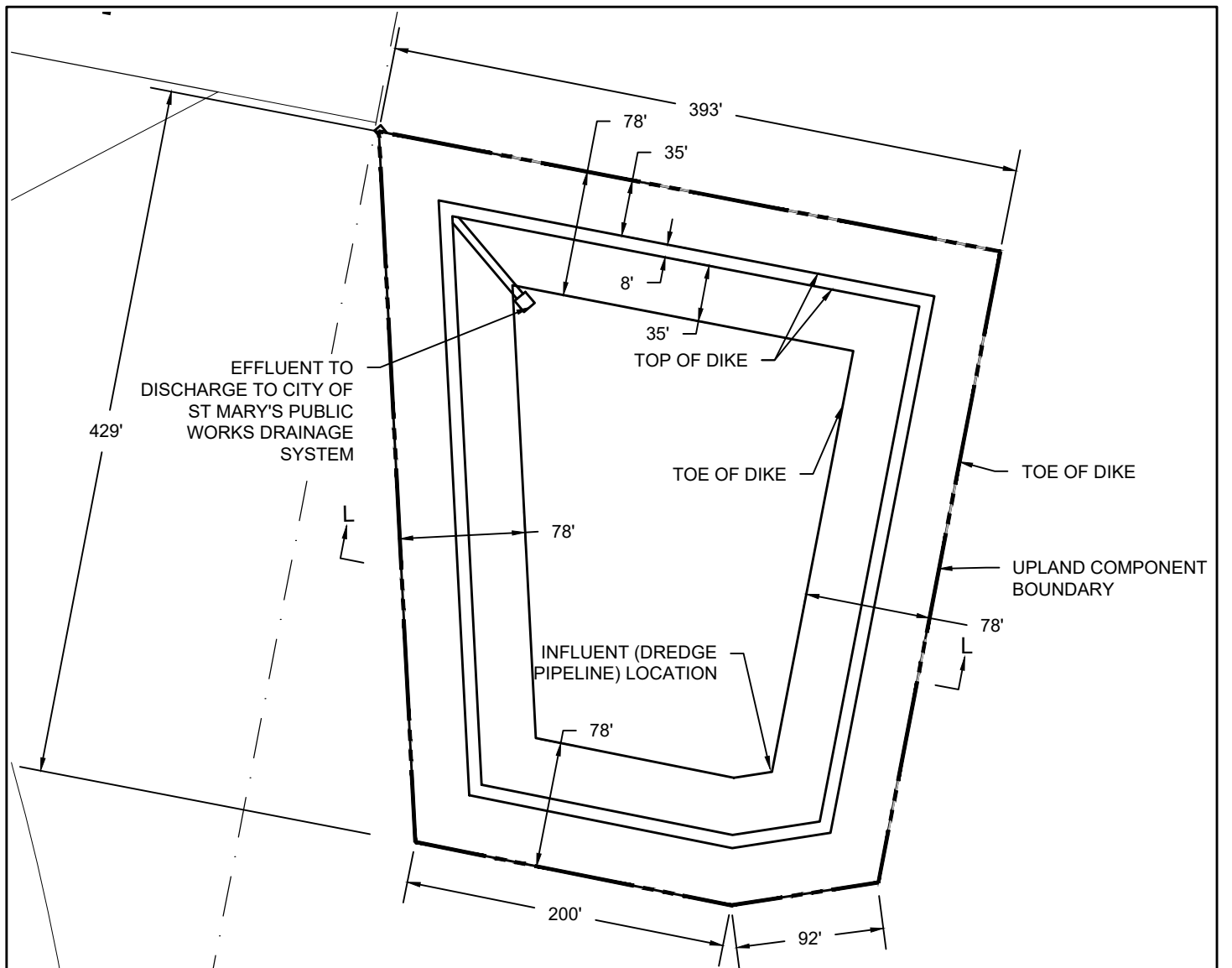
PURPOSE: COMMERCIAL/RECREATIONAL
 DATUM: MLW
 APPLICATION BY: CAMDEN COUNTY JOINT
 DEVELOPMENT AUTHORITY

DATE: 08/22/22

WHARF ST. MARY'S
 WETSLIPS &
 STAGING DOCKS
 CAMDEN COUNTY JDA
 531 N. LEE STREET
 KINGSLAND, GA 31548

PROPOSED: COMMERCIAL MARINA
 IN: NORTH RIVER
 AT: ST. MARY'S NORTH OF E. MEETING
 STREET PUBLIC BOAT LAUNCH
 COUNTY OF: CAMDEN
 STATE: GEORGIA

SHEET 10

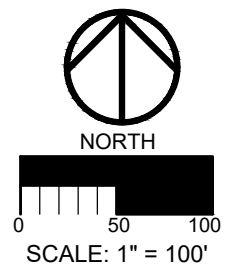


NOTES:

1. SEE SHEET 21 FOR CROSS SECTION L - L AND SPILLWAY DETAIL.



FOR PERMITTING PURPOSES ONLY. NOT FOR CONSTRUCTION.



PURPOSE: COMMERCIAL/RECREATIONAL
 DATUM: MLW
 APPLICATION BY: CAMDEN COUNTY JOINT
 DEVELOPMENT AUTHORITY

DATE: 08/22/22

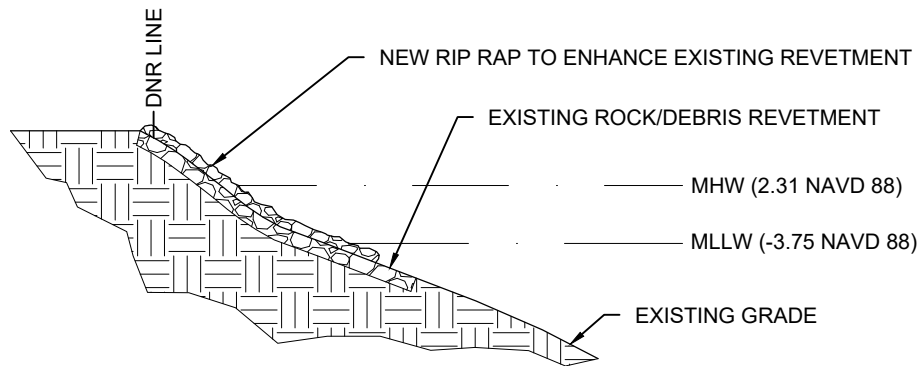
WHARF ST.MARY'S
 DREDGE MATERIAL CDF

CAMDEN COUNTY JDA
 531 N. LEE STREET
 KINGSLAND, GA 31548

PROPOSED: COMMERCIAL MARINA

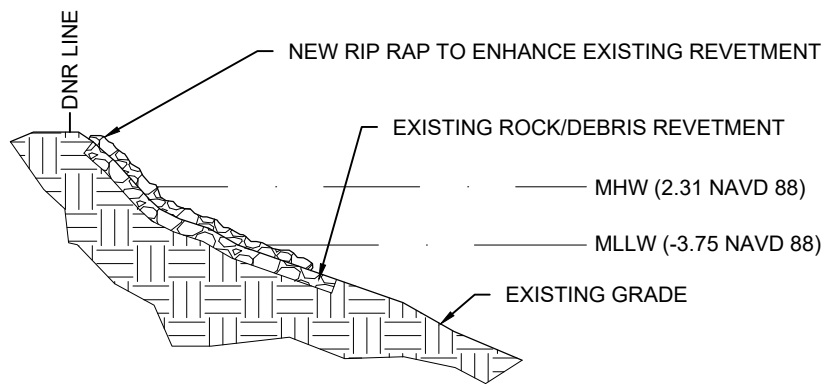
IN: NORTH RIVER
 AT: ST. MARY'S NORTH OF E. MEETING
 STREET PUBLIC BOAT LAUNCH
 COUNTY OF: CAMDEN
 STATE: GEORGIA

SHEET 11



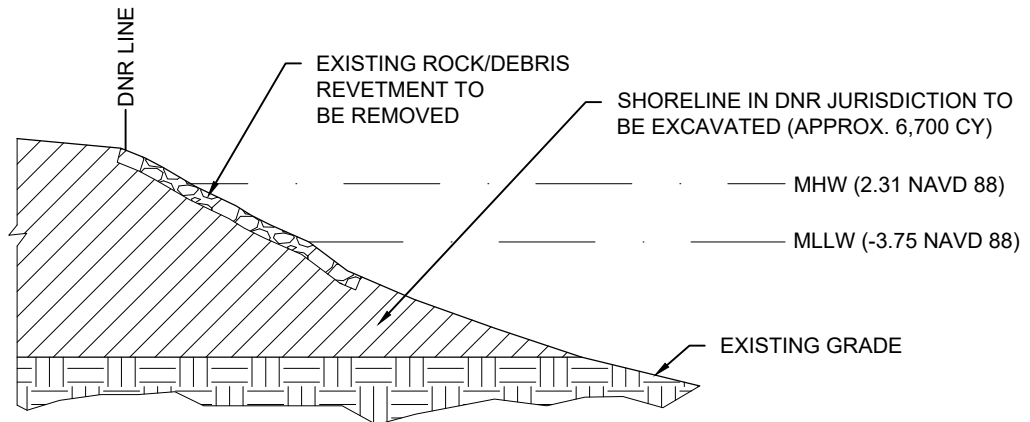
CROSS SECTION A - A

SCALE: 1" = 20'



CROSS SECTION B - B

SCALE: 1" = 20'



CROSS SECTION C - C

SCALE: 1" = 20'



FOR PERMITTING PURPOSES ONLY. NOT FOR CONSTRUCTION.

PURPOSE: COMMERCIAL/RECREATIONAL
DATUM: MLW
APPLICATION BY: CAMDEN COUNTY JOINT
DEVELOPMENT AUTHORITY

DATE: 08/22/22

WHARF ST. MARY'S
SHORELINE / ENTRANCE
CHANNEL CROSS SECTIONS

CAMDEN COUNTY JDA
531 N. LEE STREET
KINGSLAND, GA 31548

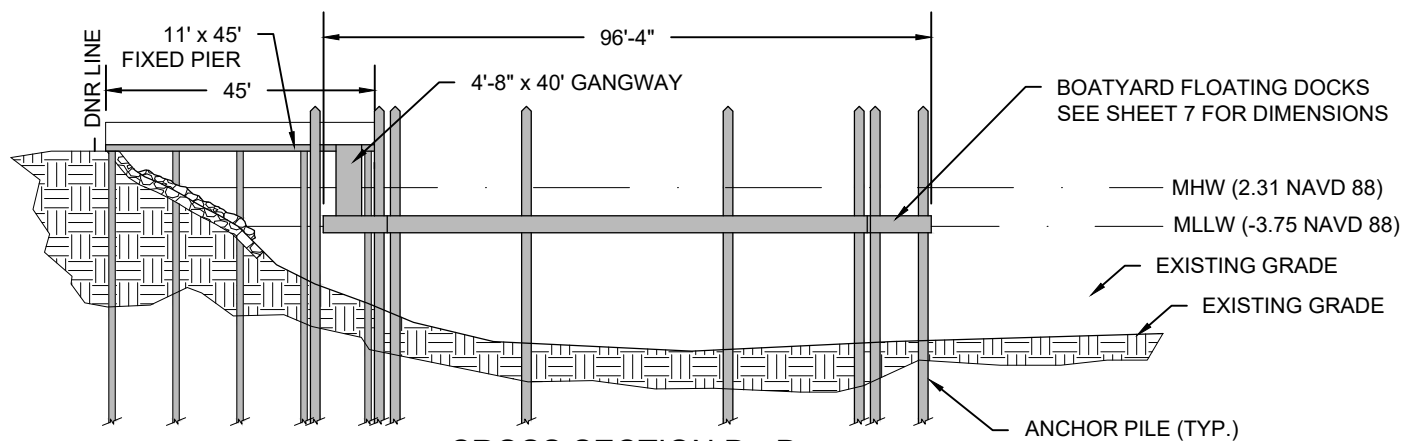
PROPOSED: COMMERCIAL MARINA

IN: NORTH RIVER
AT: ST. MARY'S NORTH OF E. MEETING
STREET PUBLIC BOAT LAUNCH

COUNTY OF: CAMDEN

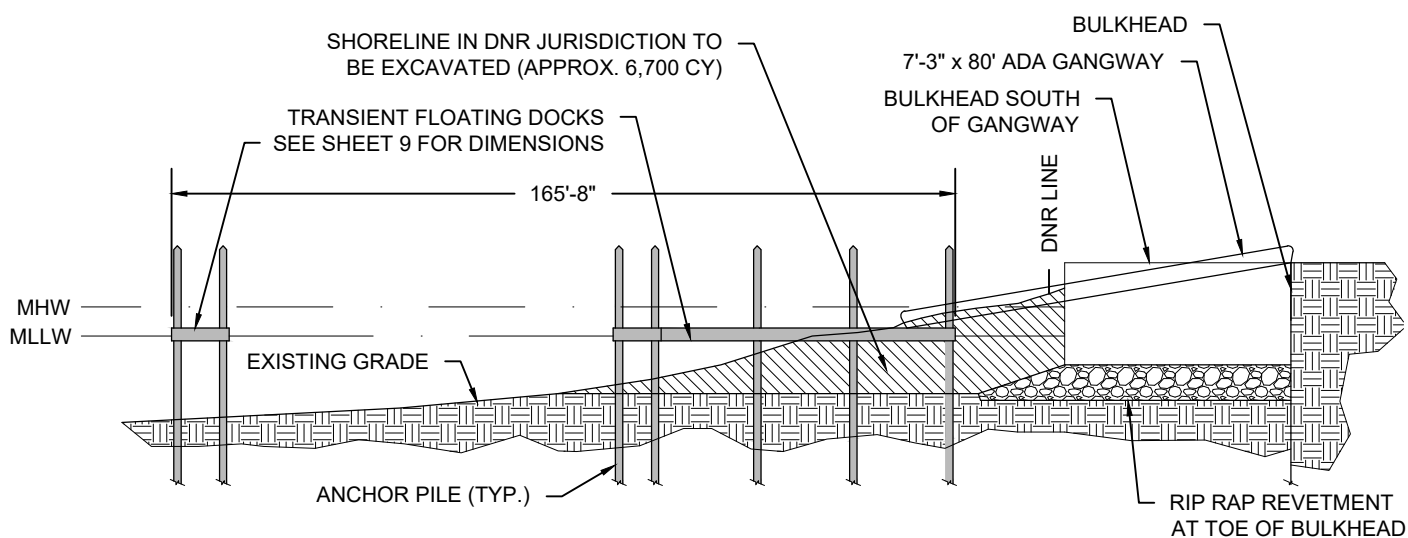
STATE: GEORGIA

SHEET 12



CROSS SECTION D - D

SCALE: 1" = 30'



CROSS SECTION E - E

SCALE: 1" = 40'



FOR PERMITTING PURPOSES ONLY. NOT FOR CONSTRUCTION.

PURPOSE: COMMERCIAL/RECREATIONAL
DATUM: MLW
APPLICATION BY: CAMDEN COUNTY JOINT
DEVELOPMENT AUTHORITY

DATE: 08/22/22

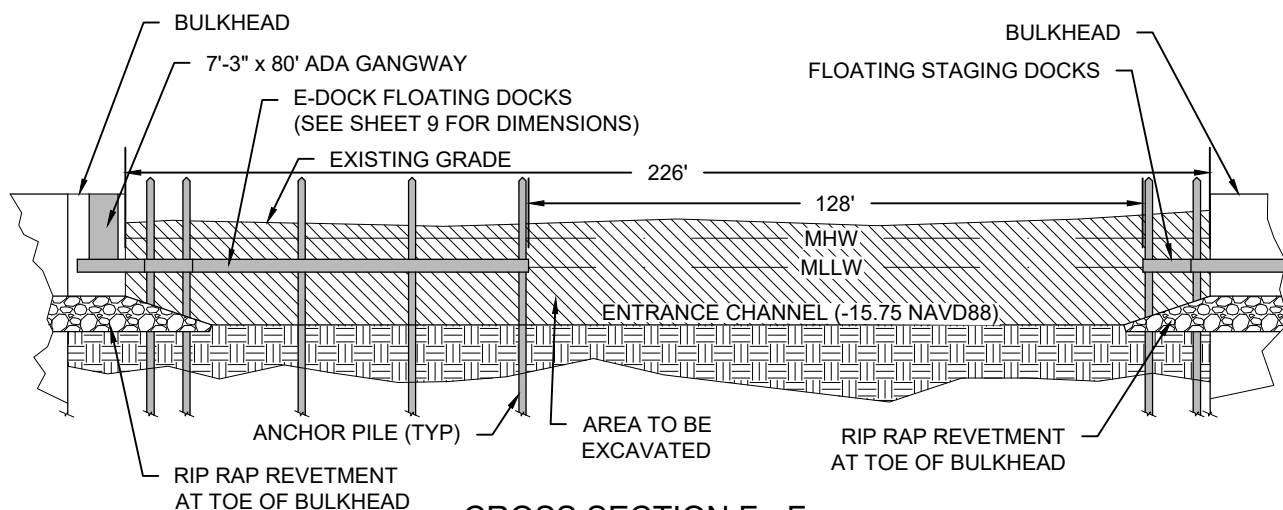
WHARF ST. MARY'S
SHORELINE & TRANSIENT
DOCK CROSS SECTIONS

CAMDEN COUNTY JDA
531 N. LEE STREET
KINGSLAND, GA 31548

PROPOSED: COMMERCIAL MARINA

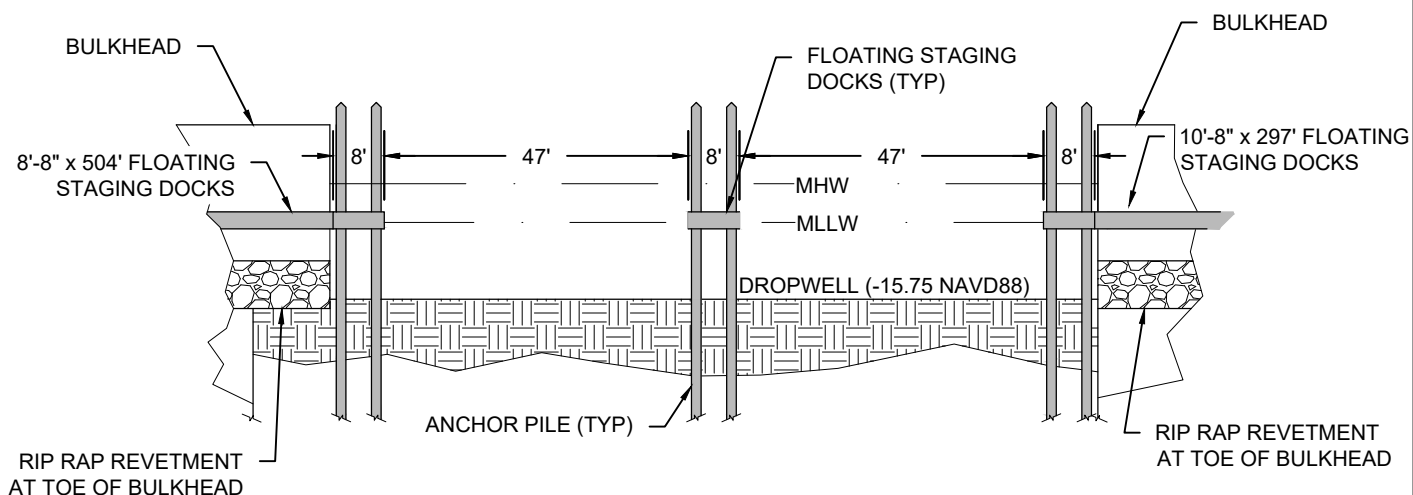
IN: NORTH RIVER
AT: ST. MARY'S NORTH OF E. MEETING
STREET PUBLIC BOAT LAUNCH
COUNTY OF: CAMDEN
STATE: GEORGIA

SHEET 13



CROSS SECTION F - F

SCALE: 1" = 40'



CROSS SECTION G - G

SCALE: 1" = 30'



FOR PERMITTING PURPOSES ONLY. NOT FOR CONSTRUCTION.

PURPOSE: COMMERCIAL/RECREATIONAL
DATUM: MLW
APPLICATION BY: CAMDEN COUNTY JOINT
DEVELOPMENT AUTHORITY

DATE: 08/22/22

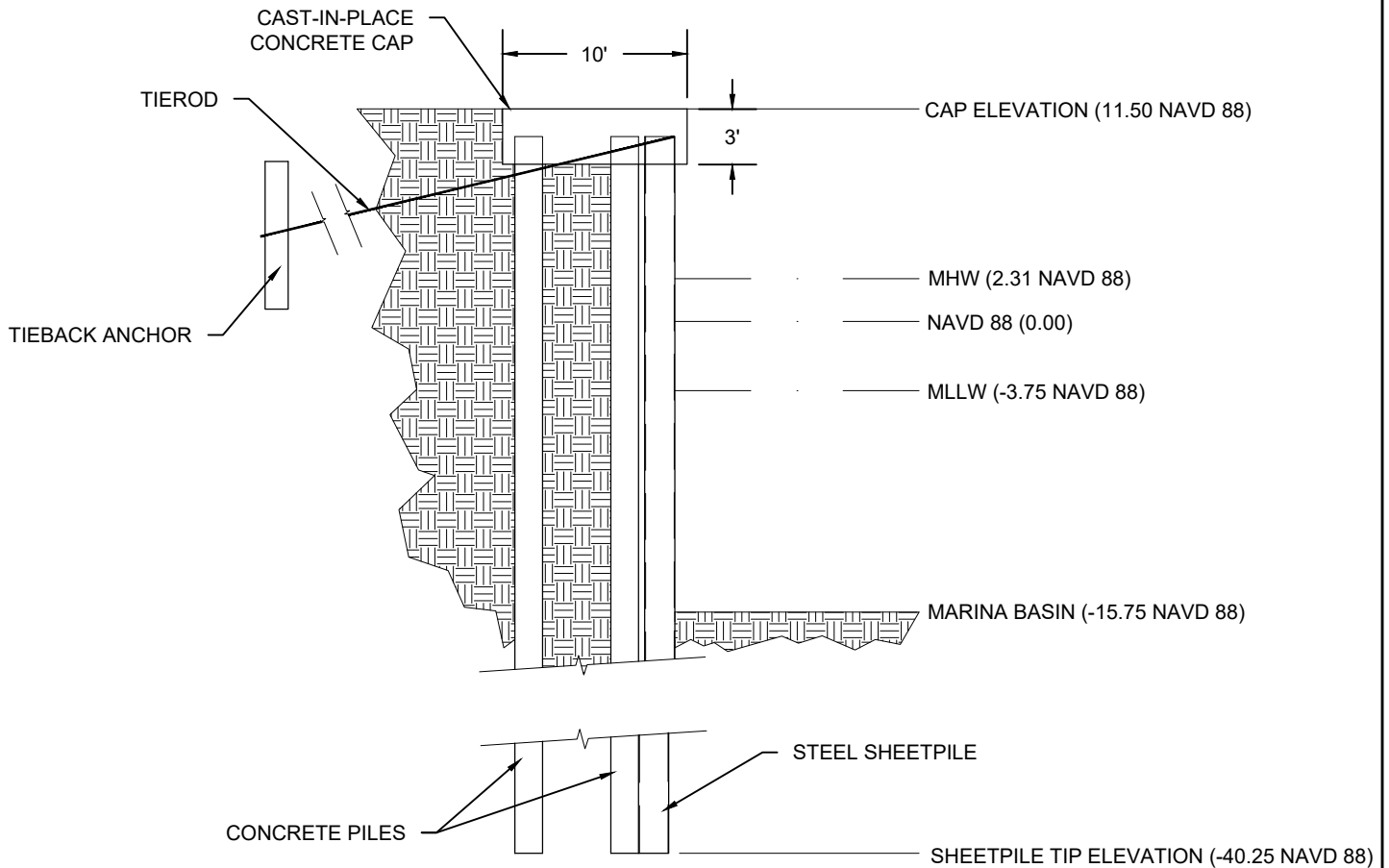
WHARF ST. MARY'S
ENTRANCE CHANNEL &
DROPWELL CROSS SECTION

CAMDEN COUNTY JDA
531 N. LEE STREET
KINGSLAND, GA 31548

PROPOSED: COMMERCIAL MARINA

IN: NORTH RIVER
AT: ST. MARY'S NORTH OF E. MEETING
STREET PUBLIC BOAT LAUNCH
COUNTY OF: CAMDEN
STATE: GEORGIA

SHEET 14



CROSS SECTION H - H
SCALE: 1" = 10'



FOR PERMITTING PURPOSES ONLY. NOT FOR CONSTRUCTION.

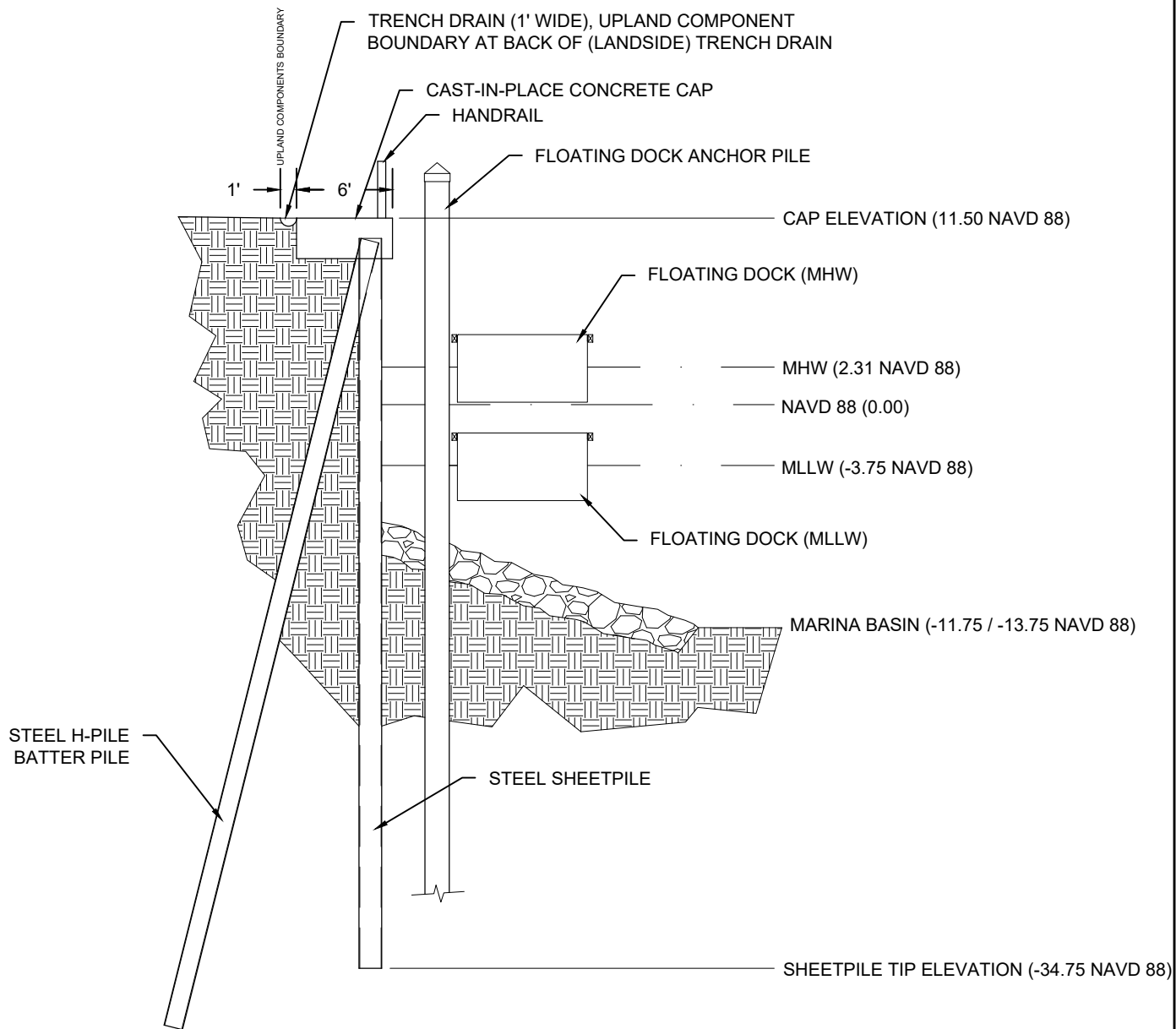
PURPOSE: COMMERCIAL/RECREATIONAL
DATUM: MLW
APPLICATION BY: CAMDEN COUNTY JOINT
DEVELOPMENT AUTHORITY

DATE: 08/22/22

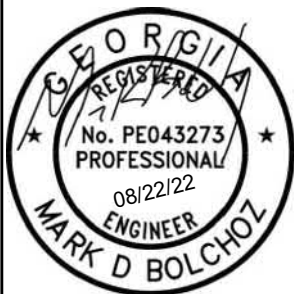
WHARF ST. MARY'S
**BULKHEAD CROSS
SECTION AT DROPWELL**
CAMDEN COUNTY JDA
531 N. LEE STREET
KINGSLAND, GA 31548

PROPOSED: COMMERCIAL MARINA
IN: NORTH RIVER
AT: ST. MARY'S NORTH OF E. MEETING
STREET PUBLIC BOAT LAUNCH
COUNTY OF: CAMDEN
STATE: GEORGIA

SHEET 15



CROSS SECTION I - I
SCALE: 1" = 10'



FOR PERMITTING PURPOSES ONLY. NOT FOR CONSTRUCTION.

PURPOSE: COMMERCIAL/RECREATIONAL
DATUM: MLW
APPLICATION BY: CAMDEN COUNTY JOINT
DEVELOPMENT AUTHORITY

WHARF ST.MARY'S
TYPICAL BULKHEAD
CROSS SECTION

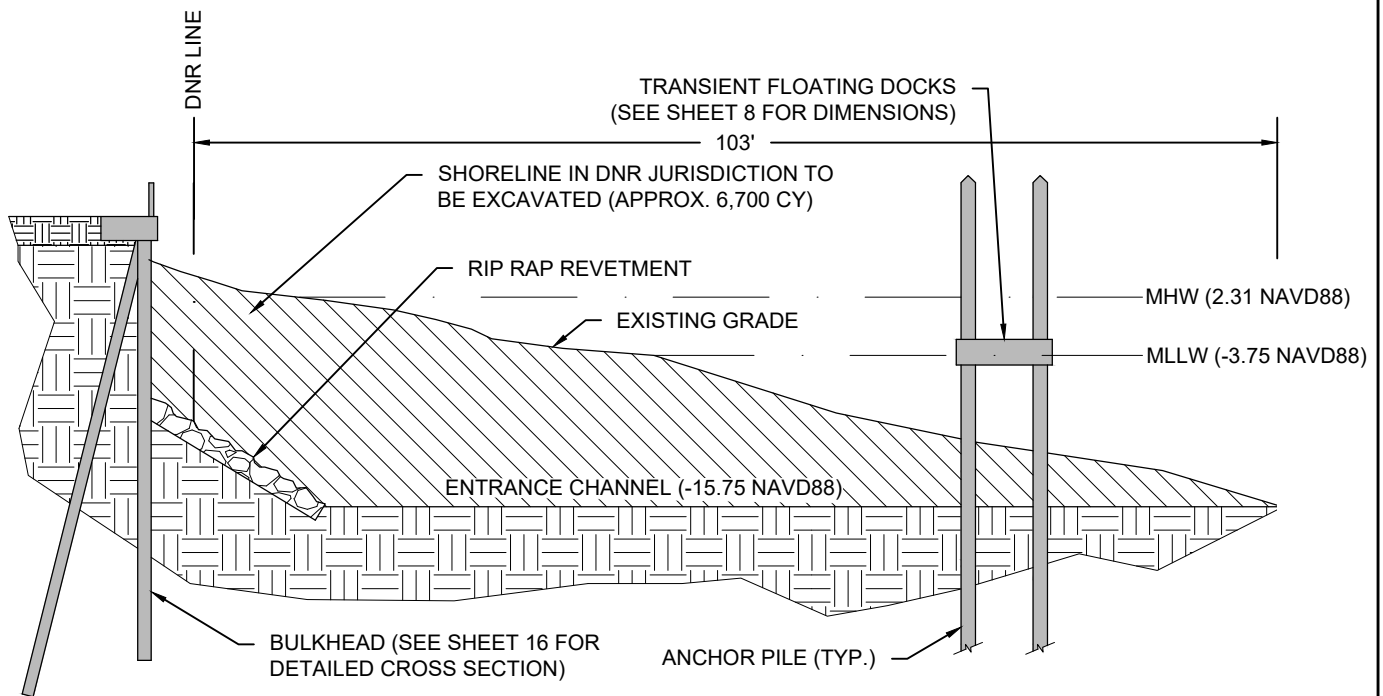
CAMDEN COUNTY JDA
531 N. LEE STREET
KINGSLAND, GA 31548

PROPOSED: COMMERCIAL MARINA

IN: NORTH RIVER
AT: ST. MARY'S NORTH OF E. MEETING
STREET PUBLIC BOAT LAUNCH
COUNTY OF: CAMDEN
STATE: GEORGIA

DATE: 08/22/22

SHEET 16



CROSS SECTION J - J

SCALE: 1" = 20'



FOR PERMITTING PURPOSES ONLY. NOT FOR CONSTRUCTION.

PURPOSE: COMMERCIAL/RECREATIONAL
 DATUM: MLW
 APPLICATION BY: CAMDEN COUNTY JOINT
 DEVELOPMENT AUTHORITY

DATE: 08/22/22

WHARF ST.MARY'S
 SHORELINE CROSS SECTION
 EAST OF MARINA STORE

CAMDEN COUNTY JDA
 531 N. LEE STREET
 KINGSLAND, GA 31548

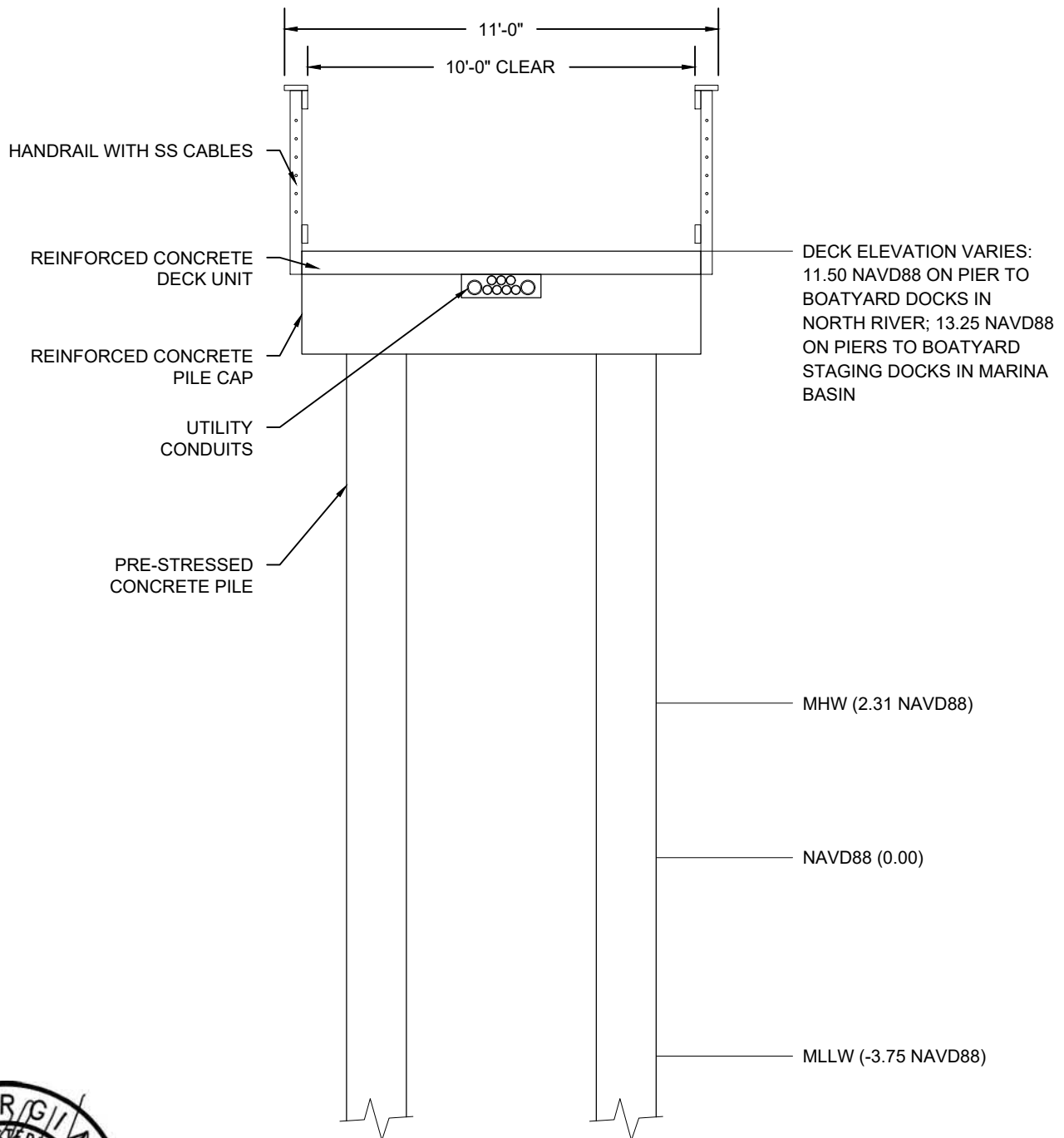
PROPOSED: COMMERCIAL MARINA

IN: NORTH RIVER
 AT: ST. MARY'S NORTH OF E. MEETING
 STREET PUBLIC BOAT LAUNCH

COUNTY OF: CAMDEN

STATE: GEORGIA

SHEET 17



CROSS SECTION K - K
SCALE: 1" = 4'

FOR PERMITTING PURPOSES ONLY. NOT FOR CONSTRUCTION.

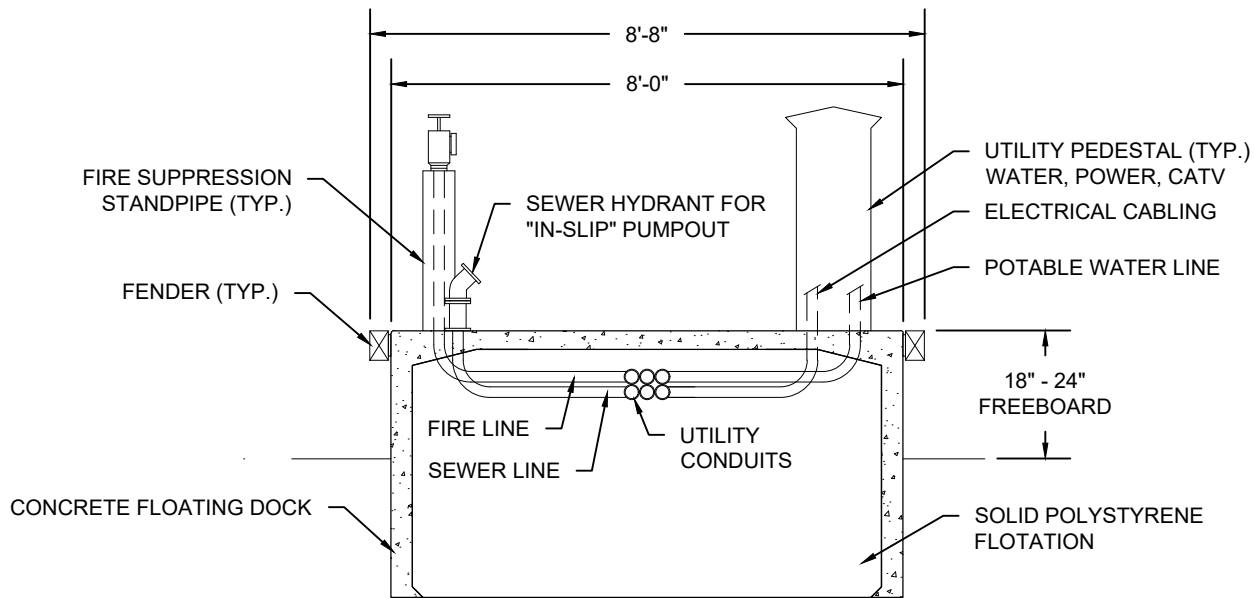


PURPOSE: COMMERCIAL/RECREATIONAL
DATUM: MLW
APPLICATION BY: CAMDEN COUNTY JOINT
DEVELOPMENT AUTHORITY

WHARF ST. MARY'S
FIXED PIER
CROSS SECTIONS
CAMDEN COUNTY JDA
531 N. LEE STREET
KINGSLAND, GA 31548

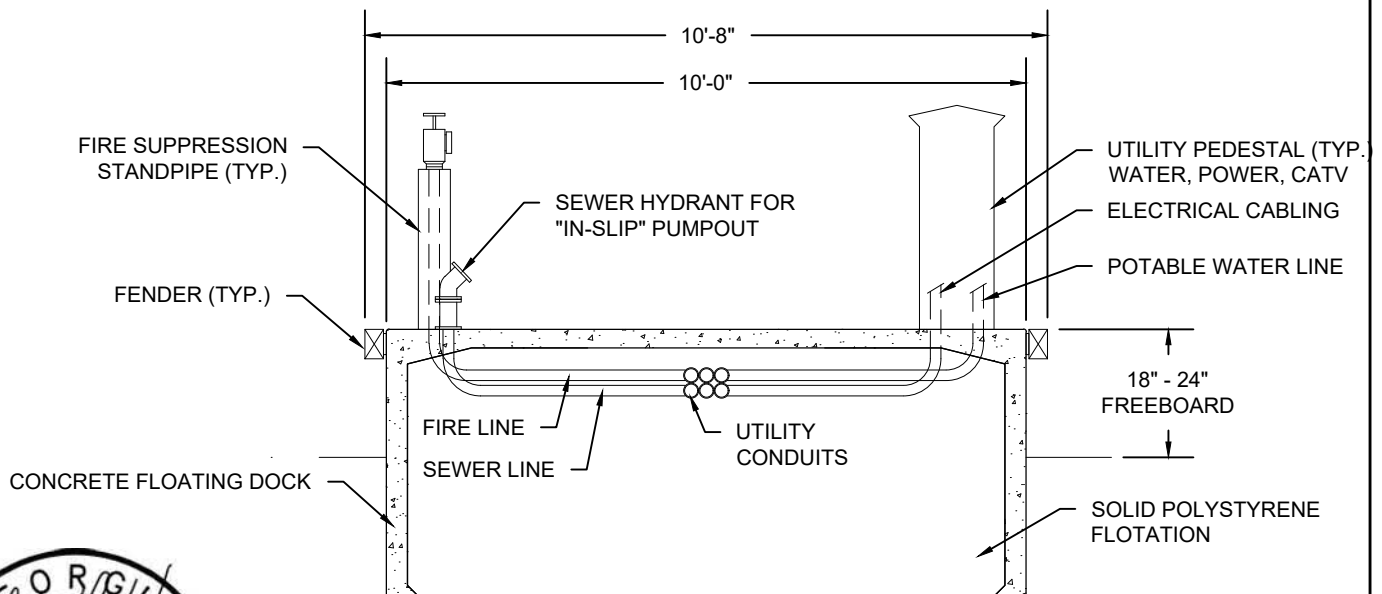
PROPOSED: COMMERCIAL MARINA
IN: NORTH RIVER
AT: ST. MARY'S NORTH OF E. MEETING
STREET PUBLIC BOAT LAUNCH
COUNTY OF: CAMDEN
STATE: GEORGIA
SHEET 18

DATE: 08/22/22



TYPICAL CROSS SECTION - 8' WIDE FLOATING DOCK

SCALE: 1" = 3'



TYPICAL CROSS SECTION - 10' WIDE FLOATING DOCK

SCALE: 1" = 3'

NOTE: FLOATING DOCK MATERIALS MAY VARY PURSUANT TO SELECTED FLOATING DOCK MANUFACTURER.

FOR PERMITTING PURPOSES ONLY. NOT FOR CONSTRUCTION.



PURPOSE: COMMERCIAL/RECREATIONAL
 DATUM: MLW
 APPLICATION BY: CAMDEN COUNTY JOINT
 DEVELOPMENT AUTHORITY

DATE: 08/22/22

WHARF ST. MARY'S
 TYPICAL FLOATING
 DOCK CROSS SECTIONS

CAMDEN COUNTY JDA
 531 N. LEE STREET
 KINGSLAND, GA 31548

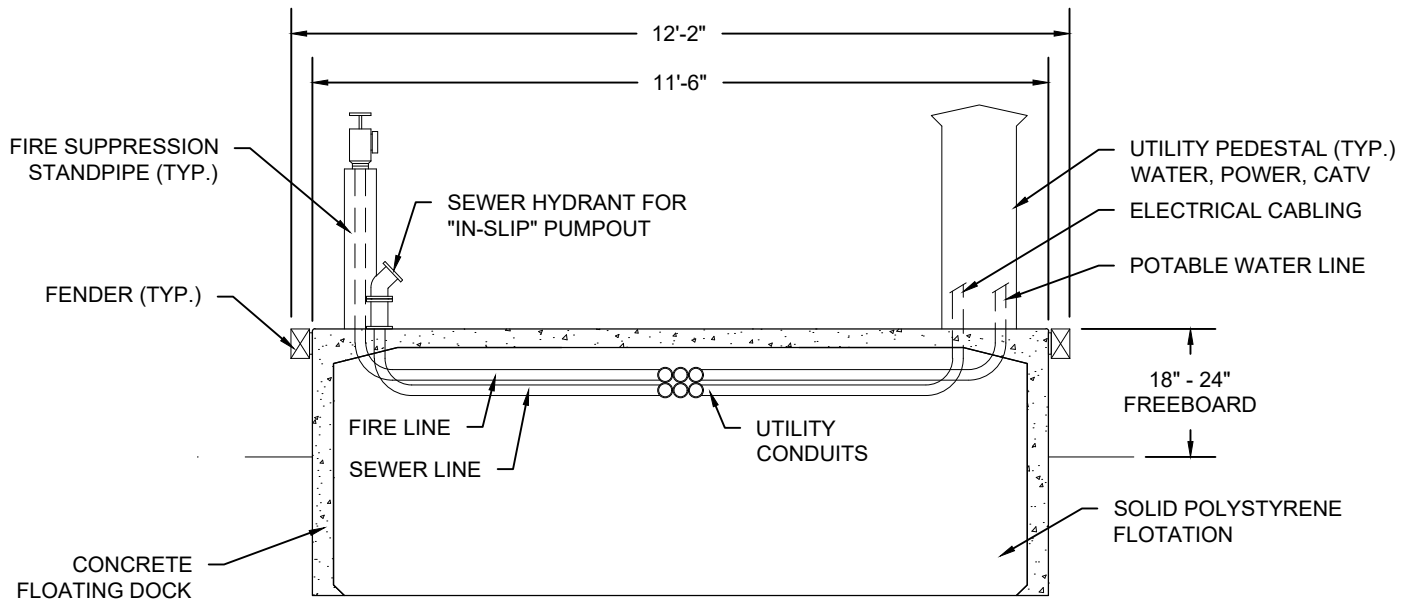
PROPOSED: COMMERCIAL MARINA

IN: NORTH RIVER
 AT: ST. MARY'S NORTH OF E. MEETING
 STREET PUBLIC BOAT LAUNCH

COUNTY OF: CAMDEN

STATE: GEORGIA

SHEET 19



TYPICAL CROSS SECTION - 12' WIDE FLOATING DOCK

SCALE: 1" = 3'

NOTE: FLOATING DOCK MATERIALS MAY VARY PURSUANT TO SELECTED FLOATING DOCK MANUFACTURER.



FOR PERMITTING PURPOSES ONLY. NOT FOR CONSTRUCTION.

PURPOSE: COMMERCIAL/RECREATIONAL
DATUM: MLW
APPLICATION BY: CAMDEN COUNTY JOINT
DEVELOPMENT AUTHORITY

DATE: 08/22/22

WHARF ST.MARY'S TYPICAL FLOATING DOCK CROSS SECTION

CAMDEN COUNTY JDA
531 N. LEE STREET
KINGSLAND, GA 31548

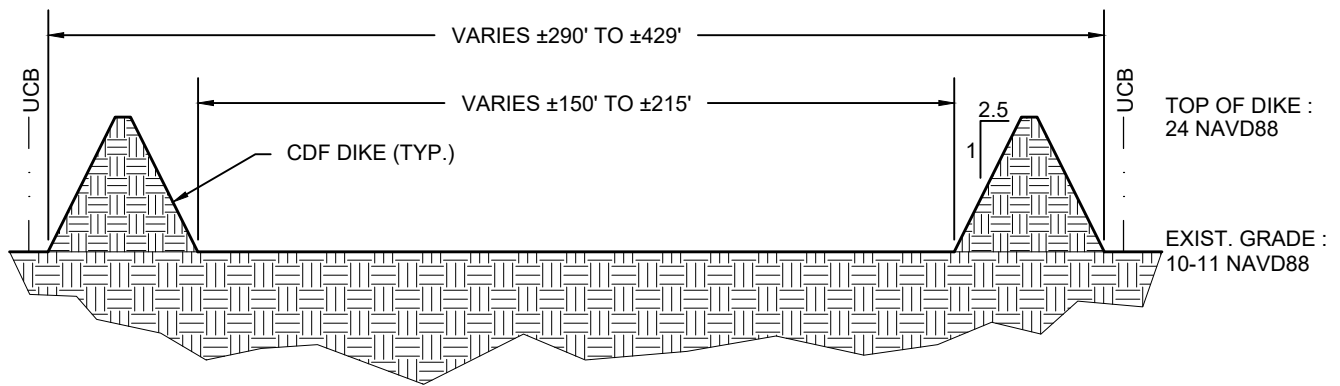
PROPOSED: COMMERCIAL MARINA

IN: NORTH RIVER
AT: ST. MARY'S NORTH OF E. MEETING
STREET PUBLIC BOAT LAUNCH

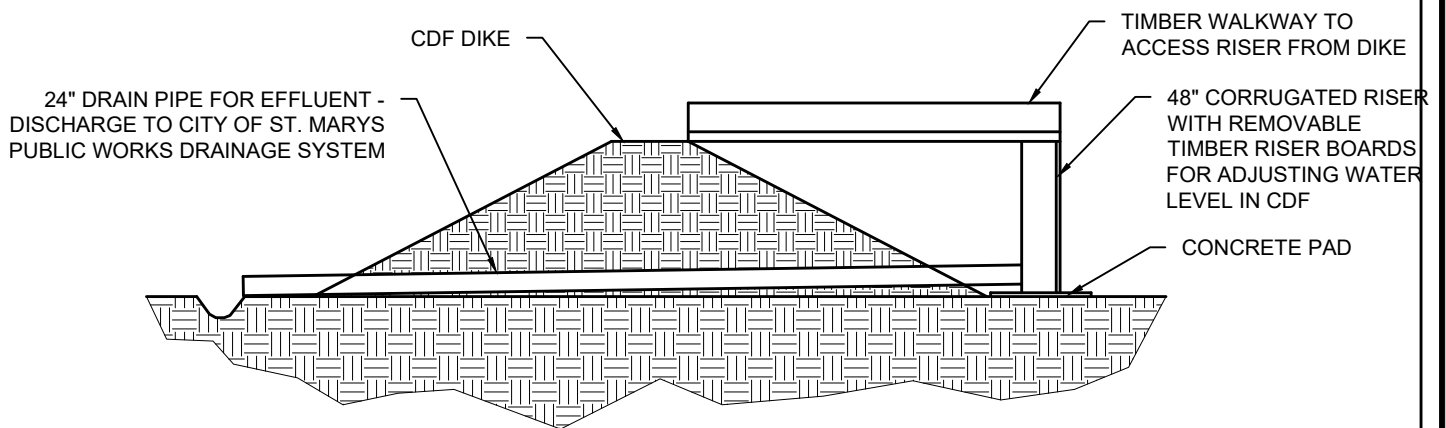
COUNTY OF: CAMDEN

STATE: GEORGIA

SHEET 20



CROSS SECTION L - L
SCALE: NTS



TYPICAL FLASHBOARD RISER SPILLWAY DETAIL
SCALE: NTS



FOR PERMITTING PURPOSES ONLY. NOT FOR CONSTRUCTION.

PURPOSE: COMMERCIAL/RECREATIONAL
DATUM: MLW
APPLICATION BY: CAMDEN COUNTY JOINT
DEVELOPMENT AUTHORITY

WHARF ST. MARY'S
DREDGE CDF SECTION
& SPILLWAY DETAIL

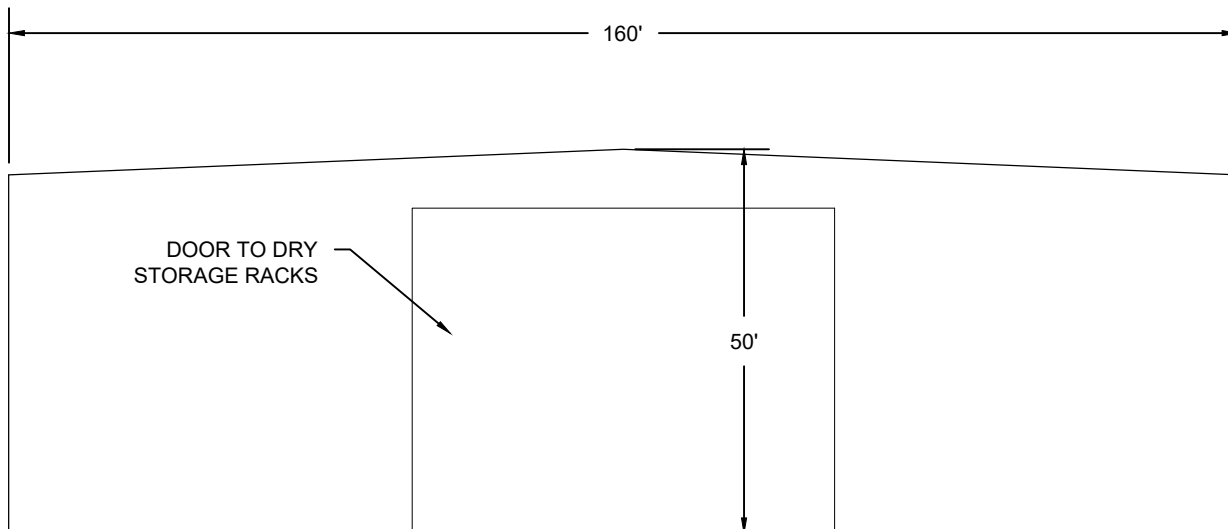
CAMDEN COUNTY JDA
531 N. LEE STREET
KINGSLAND, GA 31548

PROPOSED: COMMERCIAL MARINA

IN: NORTH RIVER
AT: ST. MARY'S NORTH OF E. MEETING
STREET PUBLIC BOAT LAUNCH
COUNTY OF: CAMDEN
STATE: GEORGIA

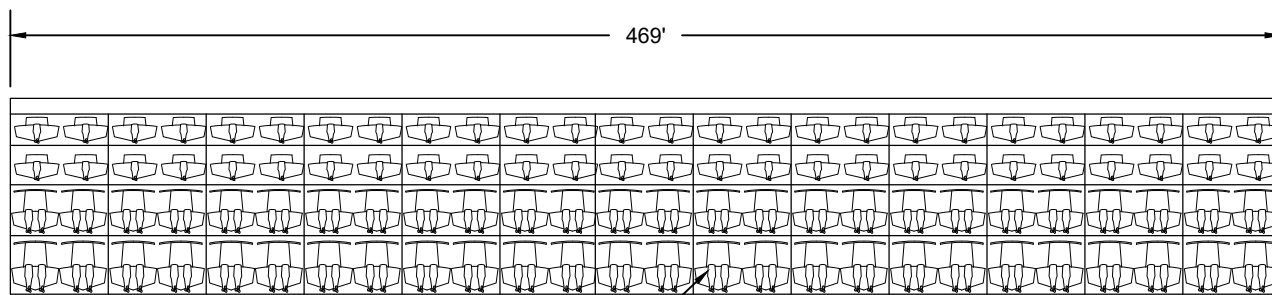
DATE: 08/22/22

SHEET 21



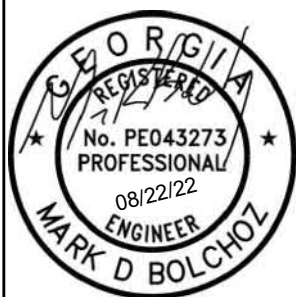
DRY STORAGE FACILITY - EAST ELEVATION

SCALE: NTS



DRYSTACK STRUCTURE - INTERIOR ELEVATION

SCALE: NTS



FOR PERMITTING PURPOSES ONLY. NOT FOR CONSTRUCTION.

PURPOSE: COMMERCIAL/RECREATIONAL
 DATUM: MLW
 APPLICATION BY: CAMDEN COUNTY JOINT
 DEVELOPMENT AUTHORITY

DATE: 08/22/22

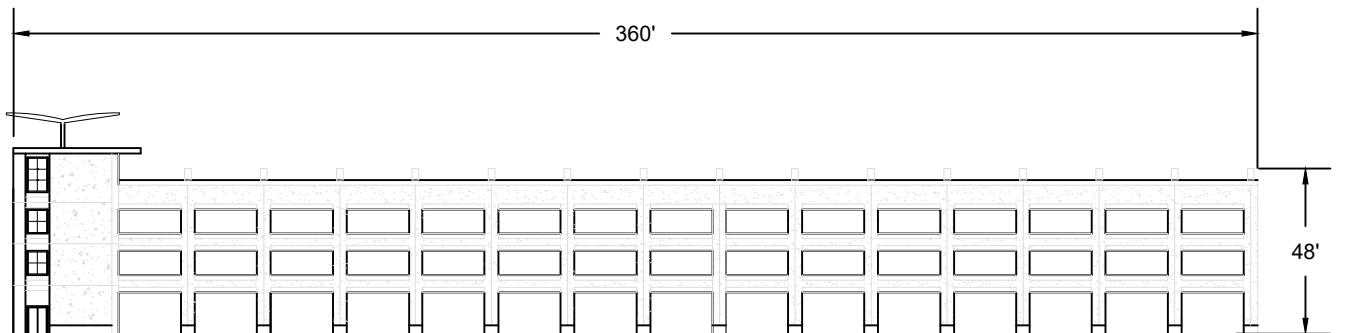
WHARF ST. MARY'S DRYSTACK CROSS SECTION & ELEVATION

CAMDEN COUNTY JDA
 531 N. LEE STREET
 KINGSLAND, GA 31548

PROPOSED: COMMERCIAL MARINA

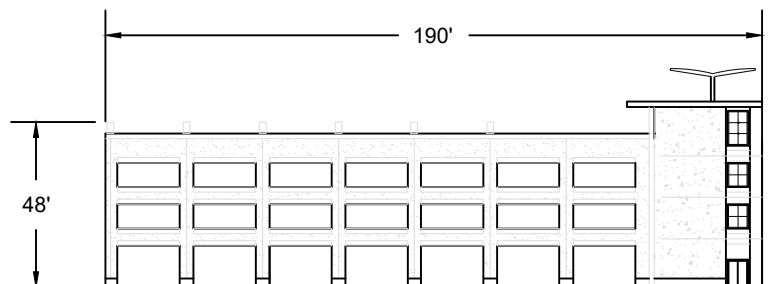
IN: NORTH RIVER
 AT: ST. MARY'S NORTH OF E. MEETING
 STREET PUBLIC BOAT LAUNCH
 COUNTY OF: CAMDEN
 STATE: GEORGIA

SHEET 22



PARKING DECK - WEST ELEVATION

SCALE: NTS



PARKING DECK - SOUTH ELEVATION

SCALE: NTS



FOR PERMITTING PURPOSES ONLY. NOT FOR CONSTRUCTION.

PURPOSE: COMMERCIAL/RECREATIONAL
 DATUM: MLW
 APPLICATION BY: CAMDEN COUNTY JOINT
 DEVELOPMENT AUTHORITY

DATE: 08/22/22

WHARF ST.MARY'S MARINA PARKING DECK SECTION & ELEVATION

CAMDEN COUNTY JDA
 531 N. LEE STREET
 KINGSLAND, GA 31548

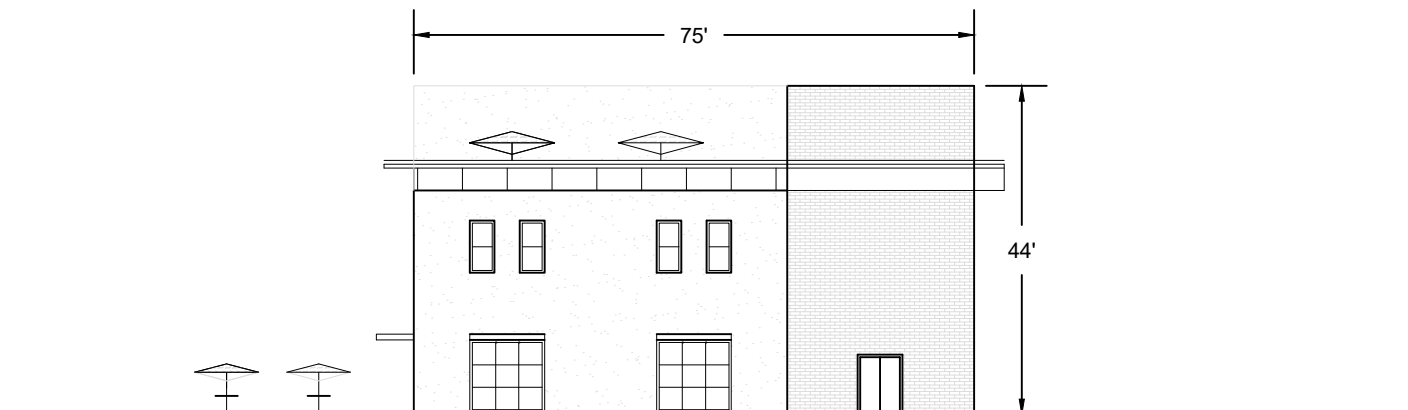
PROPOSED: COMMERCIAL MARINA

IN: NORTH RIVER
 AT: ST. MARY'S NORTH OF E. MEETING
 STREET PUBLIC BOAT LAUNCH

COUNTY OF: CAMDEN

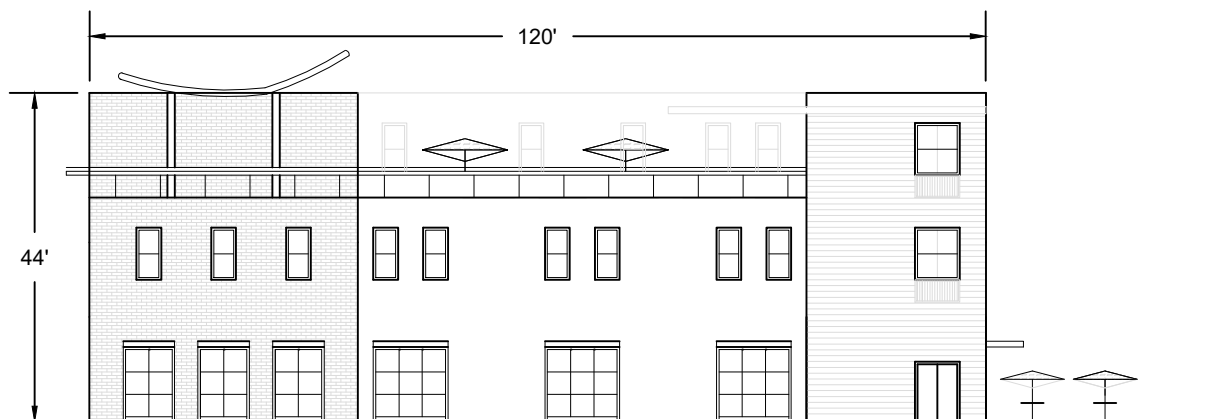
STATE: GEORGIA

SHEET 23



MARINA AMENITY - EAST ELEVATION

SCALE: NTS



MARINA AMENITY - SOUTH ELEVATION

SCALE: NTS



FOR PERMITTING PURPOSES ONLY. NOT FOR CONSTRUCTION.

PURPOSE: COMMERCIAL/RECREATIONAL
 DATUM: MLW
 APPLICATION BY: CAMDEN COUNTY JOINT
 DEVELOPMENT AUTHORITY

DATE: 08/22/22

WHARF ST.MARY'S
 MARINA AMENITY
 SECTION & ELEVATION

CAMDEN COUNTY JDA
 531 N. LEE STREET
 KINGSLAND, GA 31548

PROPOSED: COMMERCIAL MARINA

IN: NORTH RIVER
 AT: ST. MARY'S NORTH OF E. MEETING
 STREET PUBLIC BOAT LAUNCH
 COUNTY OF: CAMDEN
 STATE: GEORGIA

SHEET 24



NOTES:
1. BASE INFORMATION TAKEN FROM BOUNDARY AND TOPOGRAPHIC SURVEYS PERFORMED BY AKM SURVEYING, INC., AND BATHYMETRIC SURVEY PERFORMED BY THOMAS & HUTTON IN APRIL 2014. BATHYMETRIC CONTOURS ARE MEASURED IN FEET, REFERENCED TO MLW AND REPRESENT THE CONDITIONS AT THE TIME OF THE SURVEY.
2. THIS PLAN IS CONCEPTUAL IN NATURE AND IS NOT INTENDED FOR PURPOSES OF REGULATORY PERMITTING, BIDDING OR CONSTRUCTION.

Drawn by:	RMS
Checked by:	MDB
Approved by:	MDB
Date:	07/20/2022

Rev. No.	Date	Drawn By	Checked By	Remarks

THE WHARF AT ST. MARY'S
ST. MARY'S, GEORGIA

UPLAND COMPONENT BOUNDARY

CAMDEN COUNTY, JOINT DEVELOPMENT AUTHORITY
KINGSLAND, GEORGIA

BOLCHOZ MARINE ADVISORS, INC.
618 US HWY 1, SUITE 106
NORTH PALM BEACH, FL 33408
561-315-3318
www.bmainc.co



Project No.
22038

Sheet No.
4

07/20/2022

UPLAND COMPONENT BOUNDARY
(21.36 ACRES)

MARINA FACILITY PARKING DECK

BOAT WASH

GDNR MARSH LINE

MARSHLAND COMPONENT OF PROJECT
(i.e. FLOATING DOCKS, FIXED DOCK, GANGWAY)

LIMITS OF MARSH VEGETATION

MARINA OFFICE

DRY STORAGE FACILITY

DRY STORAGE FACILITY

STAGING DOCK

DRY STORAGE DROPWELL

UPLAND COMPONENT
50' BUFFER

UPLAND COMPONENT BOUNDARY
(21.36 ACRES)

UPLAND COMPONENT BOUNDARY
(21.36 ACRES)

STAGING DOCK

A DOCK

B DOCK

C DOCK

E DOCK

D DOCK

NORTH RIVER
Ebb
Flood

MARSHLAND COMPONENT OF PROJECT
(i.e. FLOATING DOCKS, FIXED DOCK, GANGWAY)

E&S 25' BUFFER

GDNR MARSH LINE

EXISTING PUBLIC BOAT LANDING

UPLAND COMPONENT BOUNDARY
(21.36 ACRES)

NOTES:
1. BASE INFORMATION TAKEN FROM BOUNDARY AND TOPOGRAPHIC SURVEYS PERFORMED BY AKM SURVEYING, INC., AND BATHYMETRIC SURVEY PERFORMED BY THOMAS & HUTTON IN APRIL 2014. BATHYMETRIC CONTOURS ARE MEASURED IN FEET, REFERENCED TO MLW AND REPRESENT THE CONDITIONS AT THE TIME OF THE SURVEY.
2. THIS PLAN IS CONCEPTUAL IN NATURE AND IS NOT INTENDED FOR PURPOSES OF REGULATORY PERMITTING, BIDDING OR CONSTRUCTION.



Drawn by:	RMS
Checked by:	MDB
Approved by:	MDB
Date:	07/20/2022

Rev. No.	Date	Drawn By	Checkd By	Remarks

UPLAND COMPONENT BOUNDARY

THE WHARF AT ST. MARY'S
ST. MARY'S, GEORGIA

CAMDEN COUNTY JONT DEVELOPMENT AUTHORITY
KINGSLAND, GEORGIA

BOLCHOZ MARINE ADVISORS, INC.
618 US HWY 1, SUITE 106
NORTH PALM BEACH, FL 33408
561-315-3318
www.bmainc.co



Project No.

22038

Sheet No.

5