

2201 Rowland Avenue
PH. (912) 629-4000

SAVANNAH, GA 31404
FAX (912) 629-4001

Vicinity Exhibit

WHARF ST. MARYS

Camden County, Georgia

Project No. ES207032C

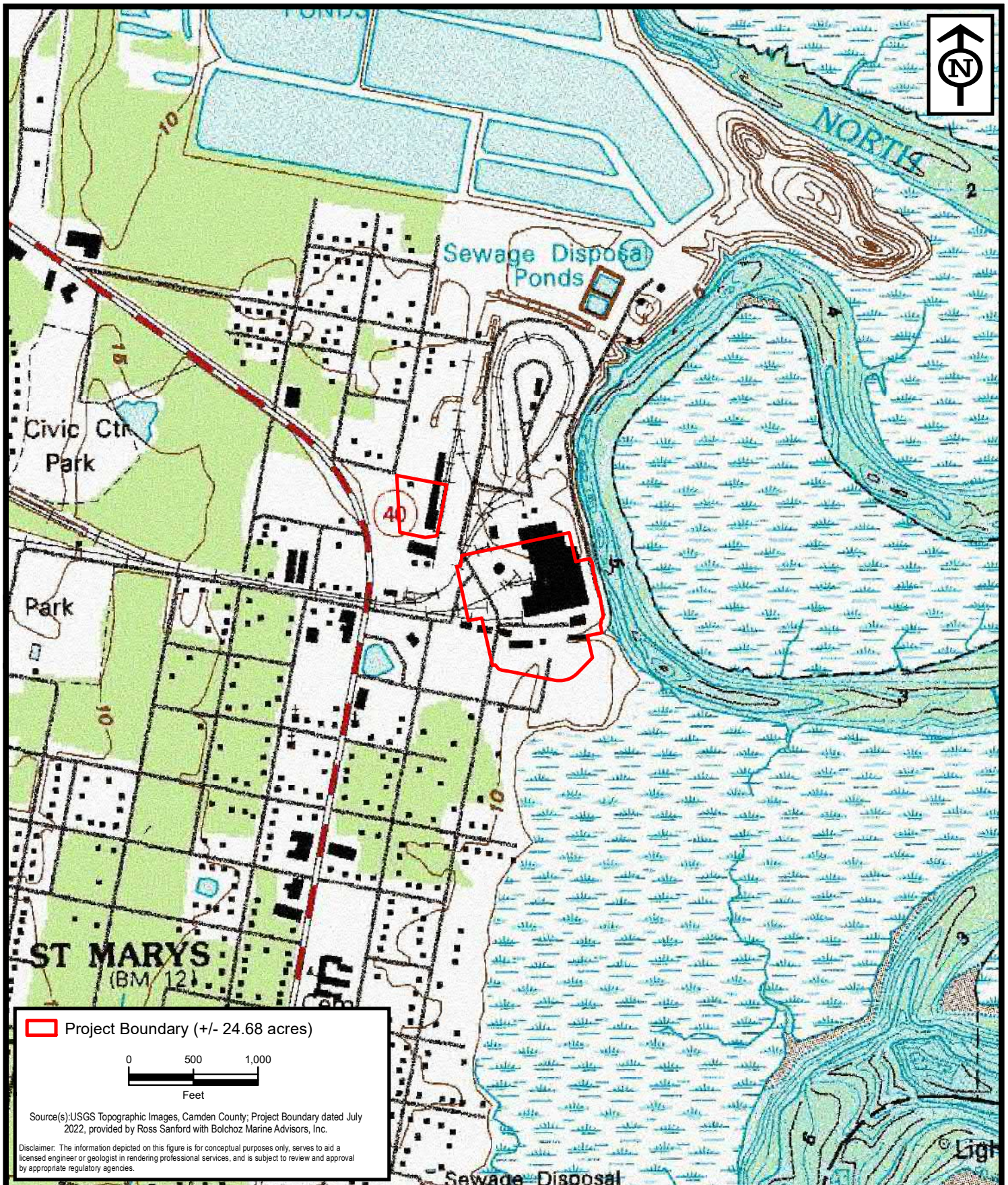
Date Aug 2022

Drawn By TLV

Checked By MJD

Approved By MJD

Figure No. 1



2201 Rowland Avenue
PH. (912) 629-4000

SAVANNAH, GA 31404
FAX (912) 629-4001

Topographic Images

WHARF ST MARYS

Camden County, Georgia

Project No. ES207032C

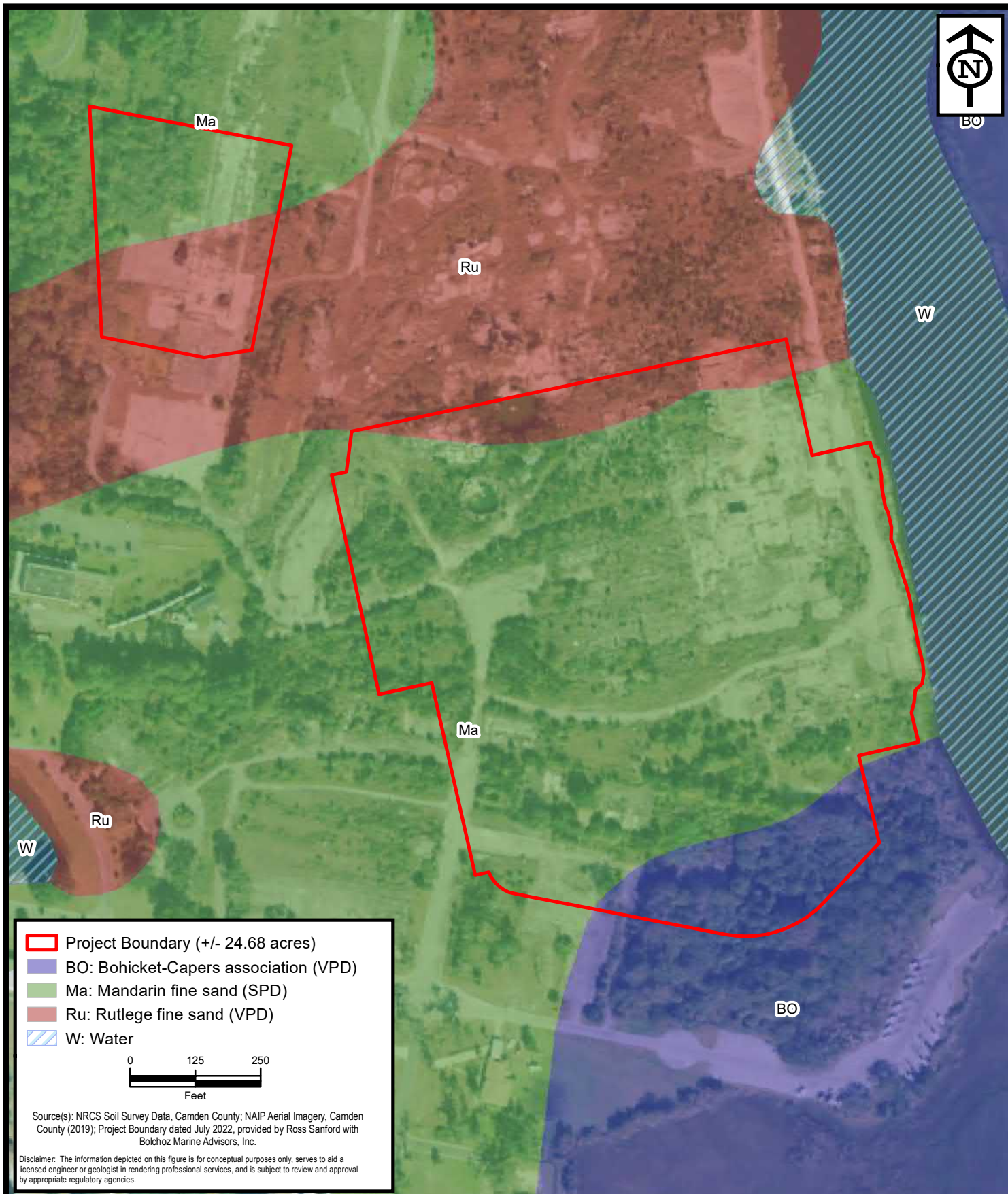
Date Aug 2022

Drawn By TLV

Checked By MJD

Approved By MJD

Figure No. 2



2201 Rowland Avenue
PH. (912) 629-4000

SAVANNAH, GA 31404
FAX (912) 629-4001

NRCS Soil Survey Data

WHARF ST MARYS

Camden County, Georgia

Project No. ES207032C

Date Aug 2022

Drawn By TLV

Checked By MJD

Approved By MJD

Figure No. 3



2201 Rowland Avenue
PH. (912) 629-4000

SAVANNAH, GA 31404
FAX (912) 629-4001

National Wetland Inventory (NWI) Data

WHARF ST MARYS

Camden County, Georgia

Project No. ES207032C

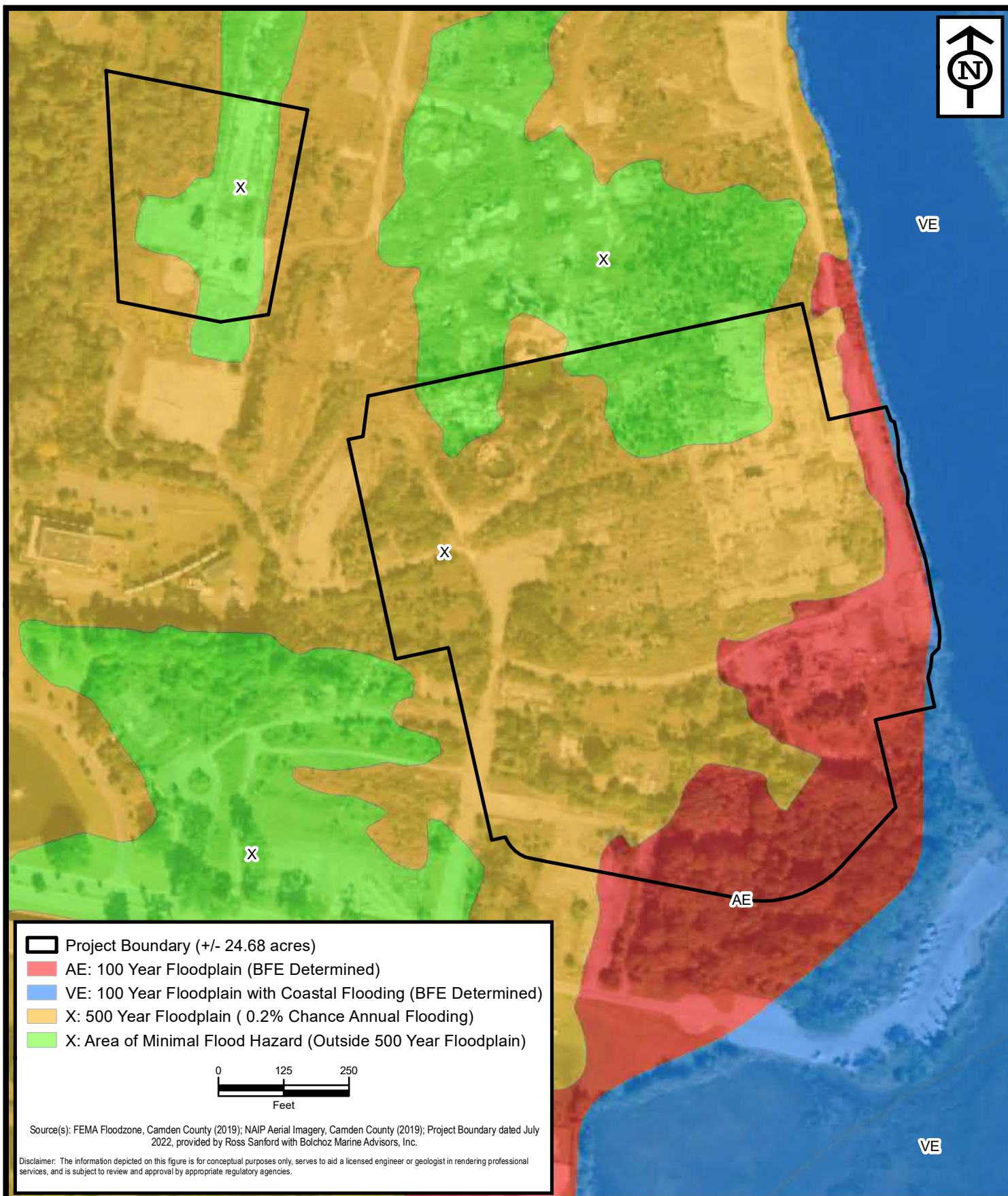
Date Aug 2022

Drawn By TLV

Checked By MJD

Approved By MJD

Figure No. **4**



2201 Rowland Avenue
PH. (912) 629-4000

SAVANNAH, GA 31404
FAX (912) 629-4001

FEMA Floodzone Data

WHARF ST MARYS

Camden County, Georgia

Project No. ES207032C

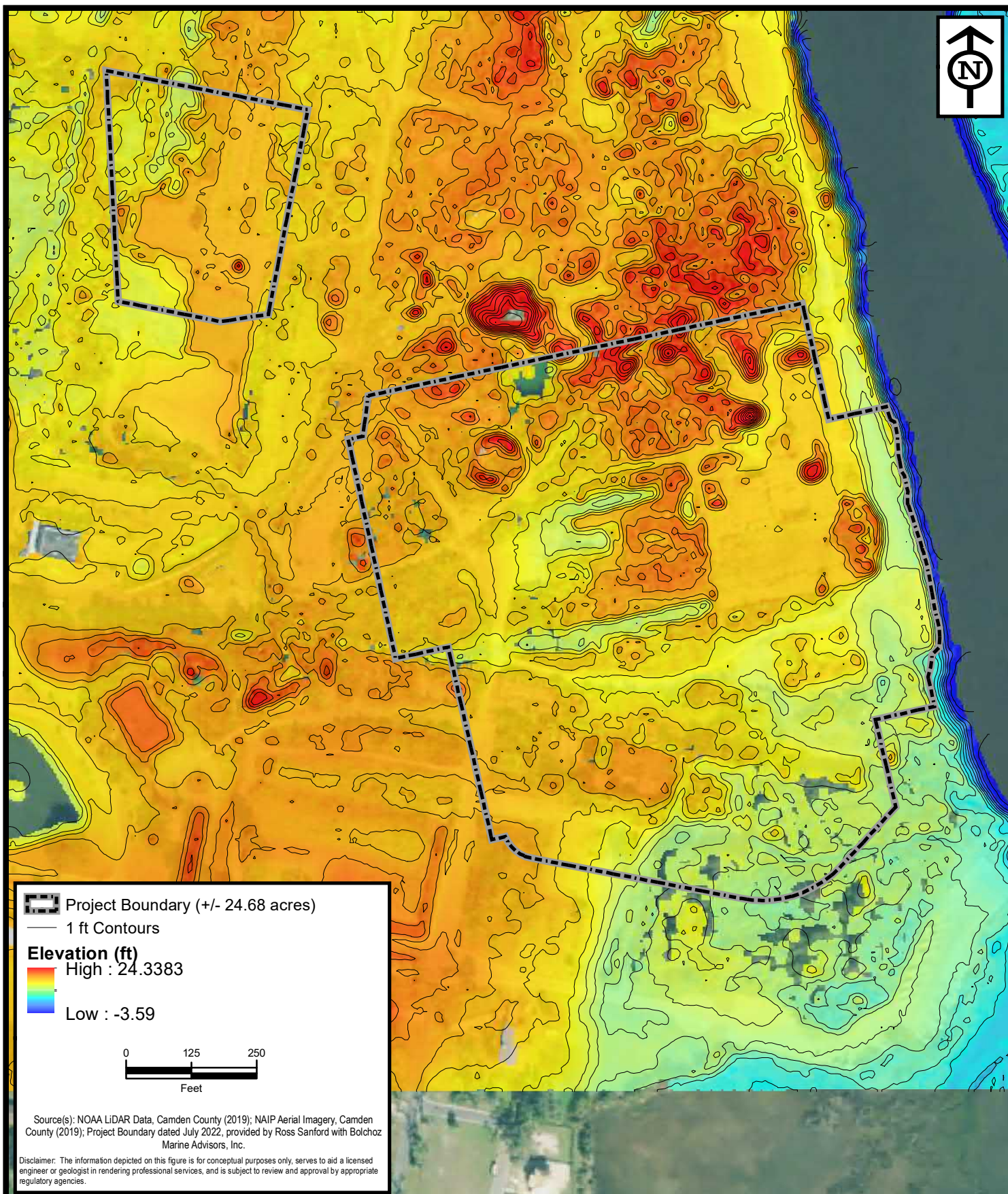
Date Aug 2022

Drawn By TLV

Checked By MJD

Approved By MJD

Figure No. 5



2201 Rowland Avenue
 PH. (912) 629-4000

SAVANNAH, GA 31404
 FAX (912) 629-4001

LiDAR Digital Elevation Model (DEM) Data with 1 ft. Contours

WHARF ST MARYS

Camden County, Georgia

Project No. ES207032C

Date Aug 2022

Drawn By TLV

Checked By MJD

Approved By MJD

Figure No. 6

WHARF ST MARYS

2003 Aerial Imagery (Figure 7)

Legend



Google Earth

Image © 2022 Maxar Technologies



1000 ft

WHARF ST MARYS

2006 Aerial Imagery (Figure 8)

Legend



WHARF ST MARYS

2011 Aerial Imagery (Figure 9)

Legend



WHARF ST MARYS

2017 Aerial Imagery (Figure 10)

Legend









