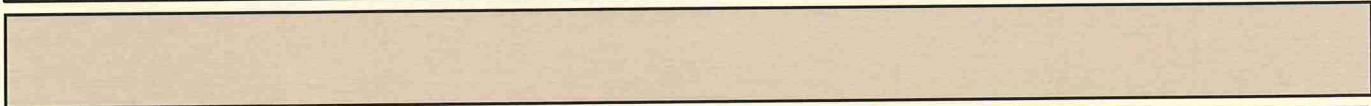


Approximate Project Limits

CMPA Line
(Existing Bulkhead)

The wetland boundaries are approximate and subject to change following verification by the US Army Corps of Engineers (USACE). This exhibit should therefore be used for preliminary planning purposes only. SECI recommends no land disturbance activities take place until a formal delineation is completed followed by final USACE verification.

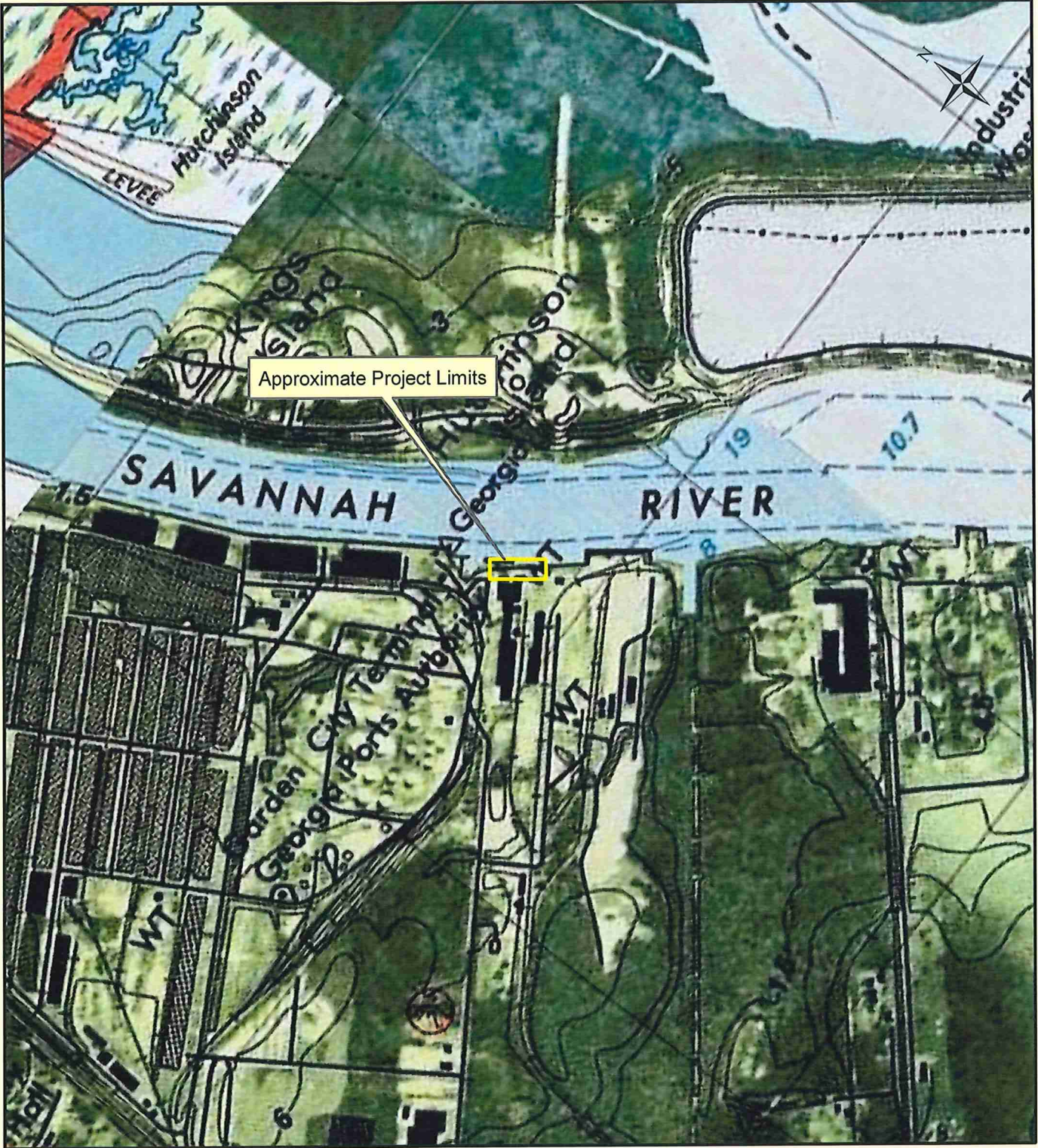
Source: Esri, Maxar, USDA, USGS, Aer



Prepared By:
sligh environmental consultants, inc.
 31 Park of Commerce Way, Suite 200B
 Savannah, Georgia 31405
 phone (912) 232-0451
 fax (912) 232-0453

GAF Water Quality Testing Platforms
 2022 Aerial Photograph
 Chatham County, Georgia

150 Feet
Exhibit Date: May 14, 2024
Drawn By: BWW
Reviewed By: DJP
Job Number : 01-24-047



Prepared By:
sligh environmental consultants, inc.
 31 Park of Commerce Way, Suite 200B
 Savannah, Georgia 31405
 phone (912) 232-0451
 fax (912) 232-0453

GAF Water Quality Testing Platforms
 US Geological Survey
 Chatham County, Georgia

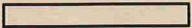
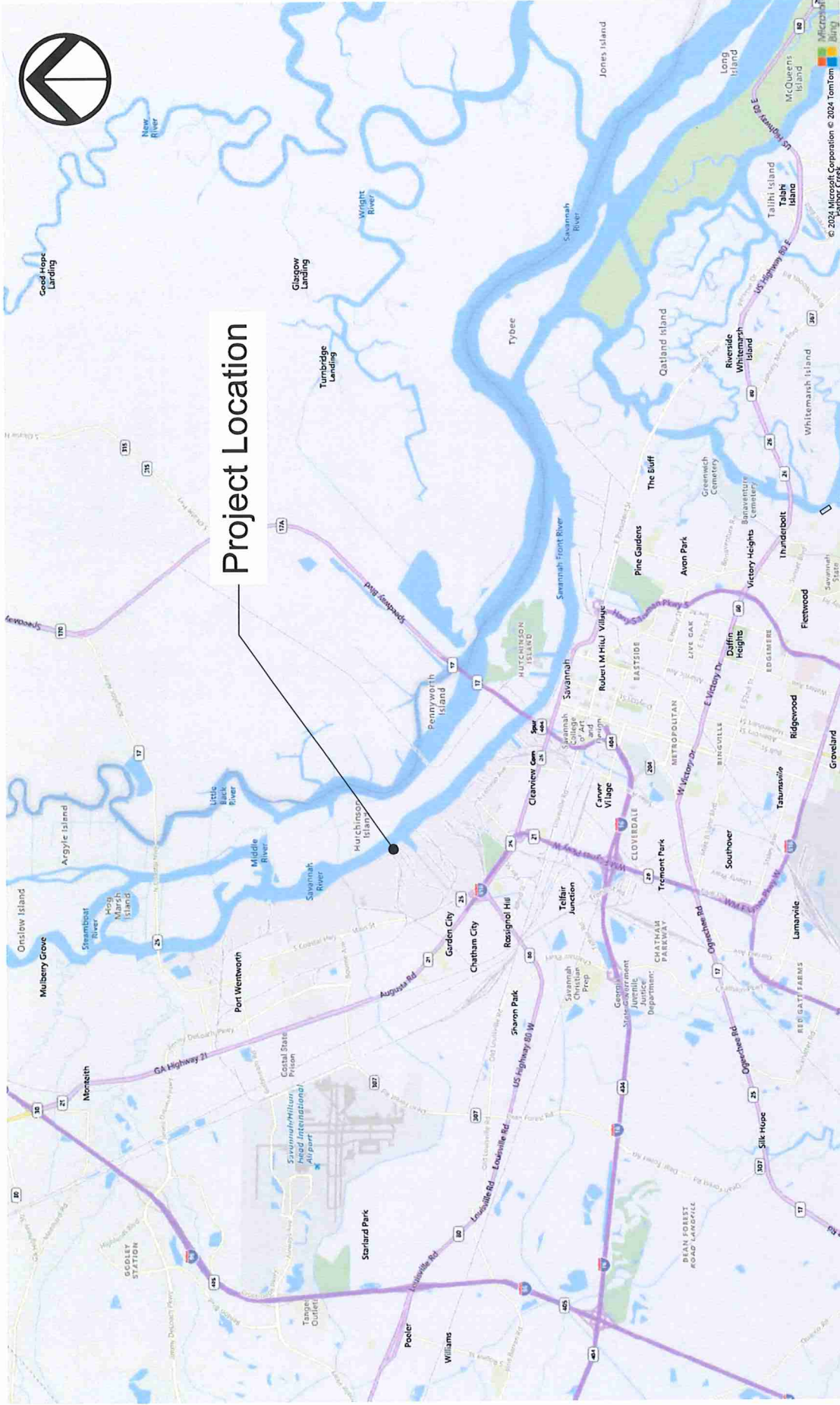
1,000
 Feet

Exhibit Date: May 14, 2024
Drawn By: BWW
Reviewed By: DJP
Job Number : 01-24-047



Project Location



Ball Maritime Group
 4 Cedar View Court | Savannah, GA 31410
 www.ballmaritime.com | (912) 662-2914
 Copyright © 2023

- GENERAL NOTES:**
1. SOURCE OF MAPS - MICROSOFT BING
 2. PROJECT LOCATION
 LAT: N32° 7'02.22"
 LON: W81° 7'51.52"

VICINITY MAP

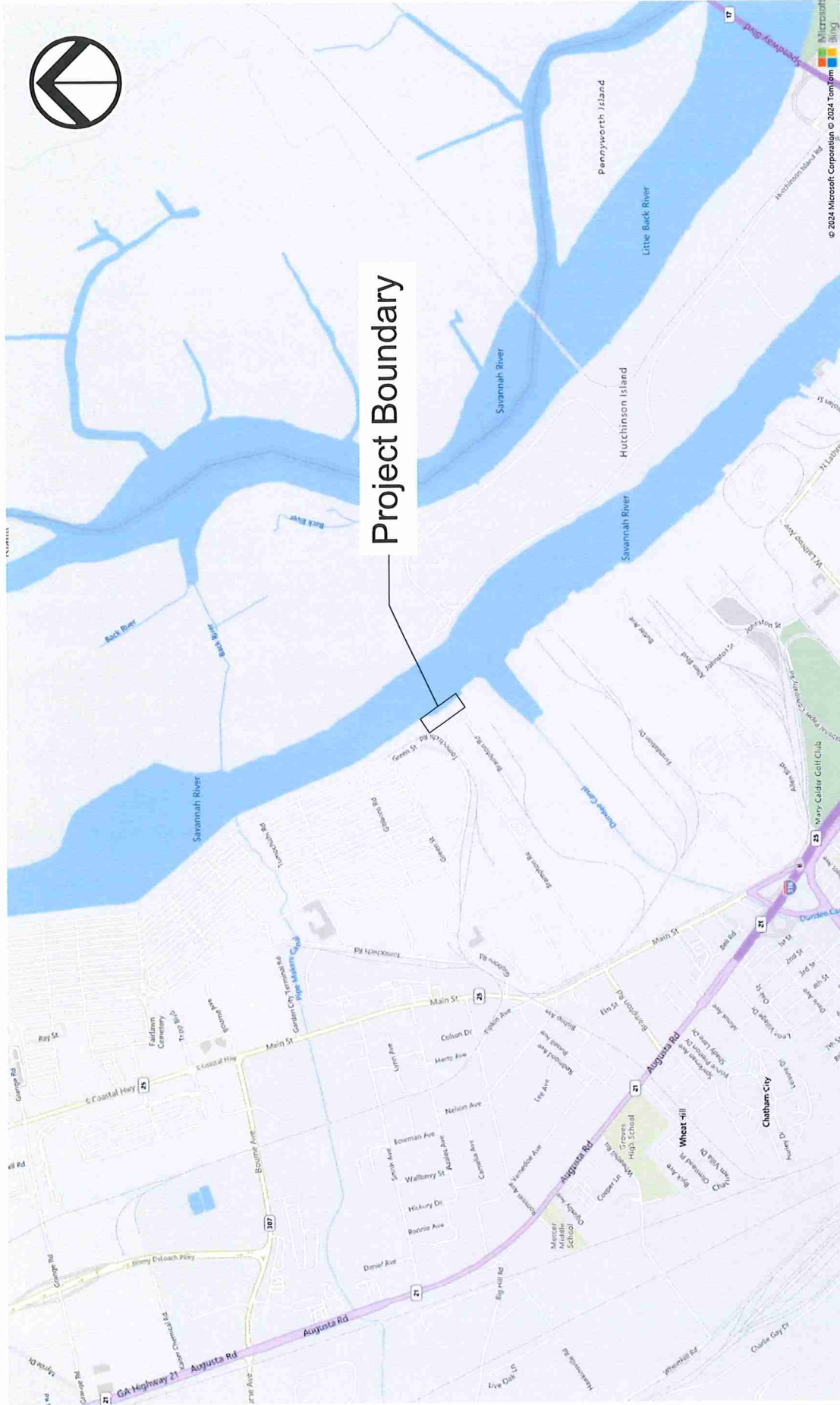
GAF BULKHEAD
 SAVANNAH RIVER, GEORGIA

PROPOSED ACTIVITY: TESTING PLATFORMS

Applicant: GAF MATERIALS CORP
 Date: 05-06-24
 County: CHATHAM
 JOB#: 23-1033
 SCALE: 1" = 2 Miles
 DATUM: NAVD88
 SHEET: 1 of 6

SCALE: 1" = 2 MILES





Ball Maritime Group
 4 Cedar View Court | Savannah, GA 31410
 www.ballmaritime.com | (912) 662-2914
 Copyright © 2023

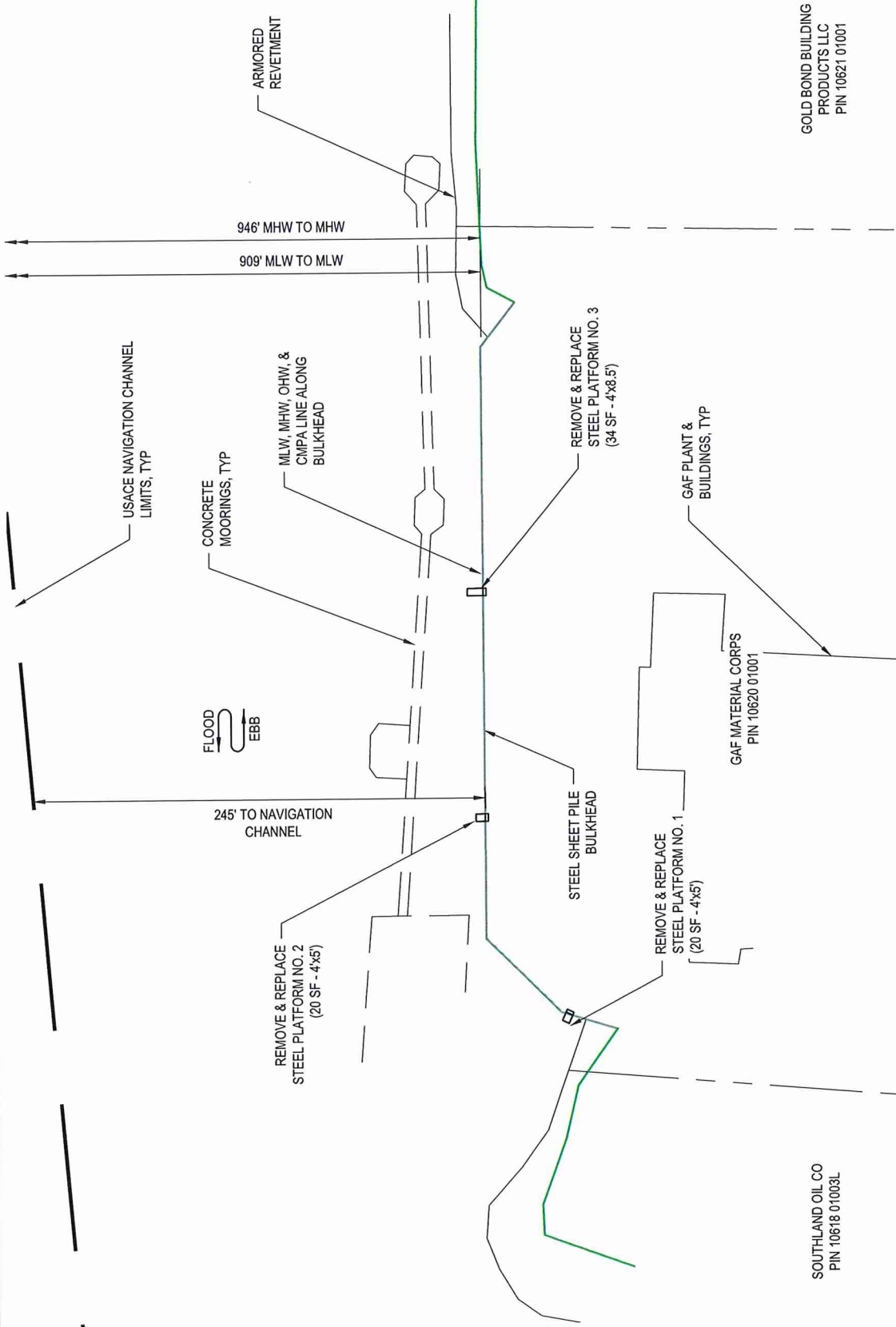
- GENERAL NOTES:**
1. SOURCE OF MAPS - MICROSOFT BING
 2. PROJECT LOCATION
 LAT: N32° 7'0.22"
 LON: W81° 7'51.52"

LOCATION MAP

PROPOSED ACTIVITY: TESTING PLATFORMS
GAF BULKHEAD
 SAVANNAH RIVER, GEORGIA

Applicant: GAF MATERIALS CORP
 Date: 05-06-24
 County: CHATHAM
 JOB#: 23-1033
 SCALE: 1" = 1/2 Mile
 DATUM: NAVD88
 SHEET: 2 of 6

SCALE: 1" = 1/2 MILE
 0 1/4 1/2 1 MILE



Ball Maritime Group
 4 Cedar View Court | Savannah, GA 31410
 www.ballmaritime.com | (912) 662-2914
 Copyright © 2023

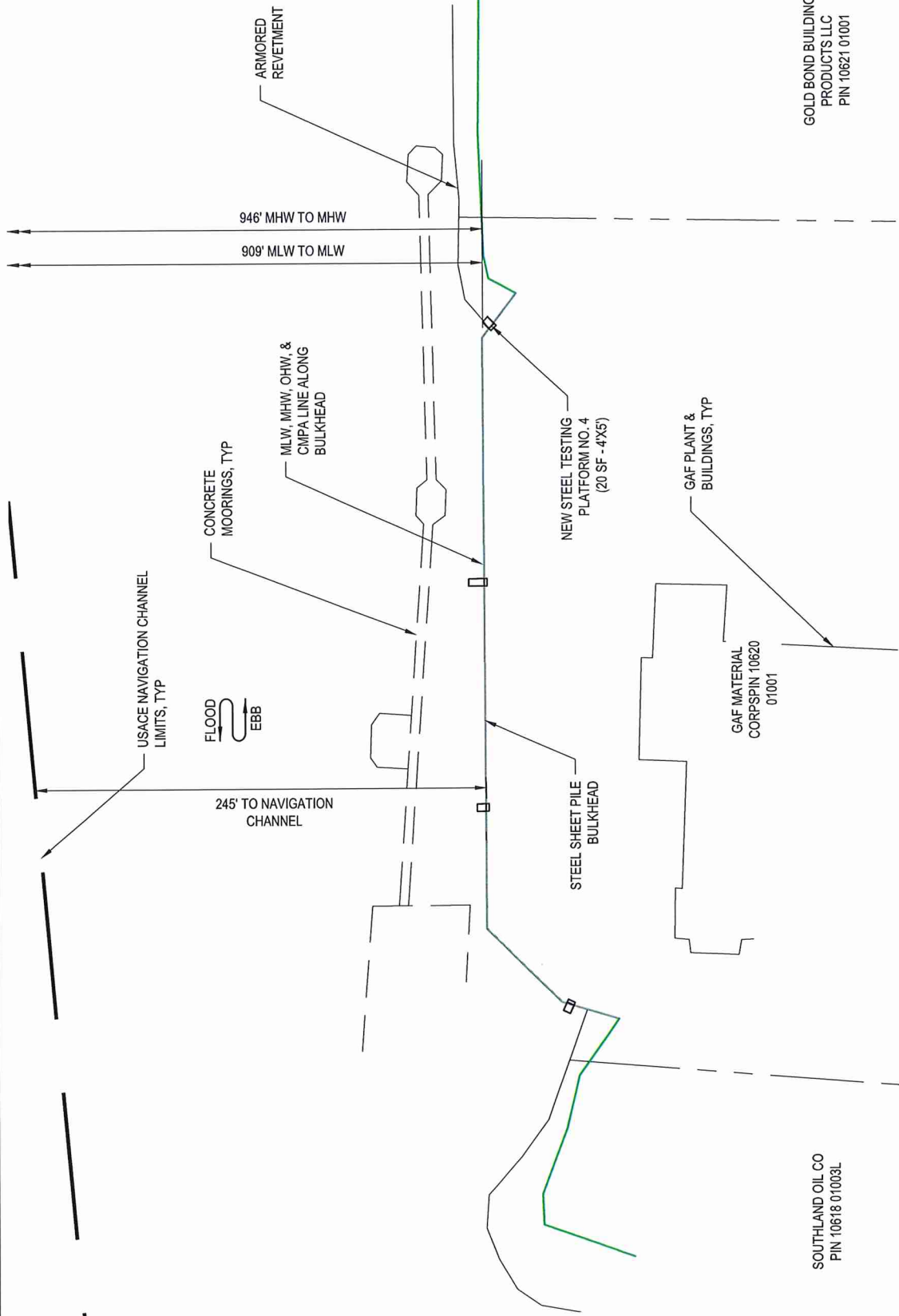
- GENERAL NOTES:**
1. EXISTING LAYOUT BASED ON ASBUILT DRAWINGS PROVIDED BY GAF MATERIALS CORP.
 2. SEE SHEETS 5 & 6 FOR TYPICAL SECTION.
 3. STRUCTURES PRESENTED ARE INSIDE CMPA JURISDICTIONAL AREA.

EXISTING CONDITIONS & DEMOLITION

PROPOSED ACTIVITY: TESTING PLATFORMS
GAF BULKHEAD
 SAVANNAH RIVER, GEORGIA

Applicant: GAF MATERIALS CORP
 Date: 05-06-24
 County: CHATHAM
 JOB#: 23-1033
 SCALE: 1" = 80'
 DATUM: NAVD88
 SHEET: 3 of 6

SCALE: 1"=80'
 0 40' 80' 160'
 (IN FEET)



GOLD BOND BUILDING PRODUCTS LLC
PIN 10621 01001



Ball Maritime Group
4 Cedar View Court | Savannah, GA 31410
www.ballmaritime.com | (912) 662-2914
Copyright © 2023

GENERAL NOTES:

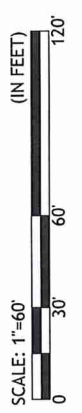
- SEE SHEET 6 FOR TYPICAL SECTION.
- AREA OF STRUCTURES PRESENTED IS INSIDE CMPA JURISDICTIONAL AREA.

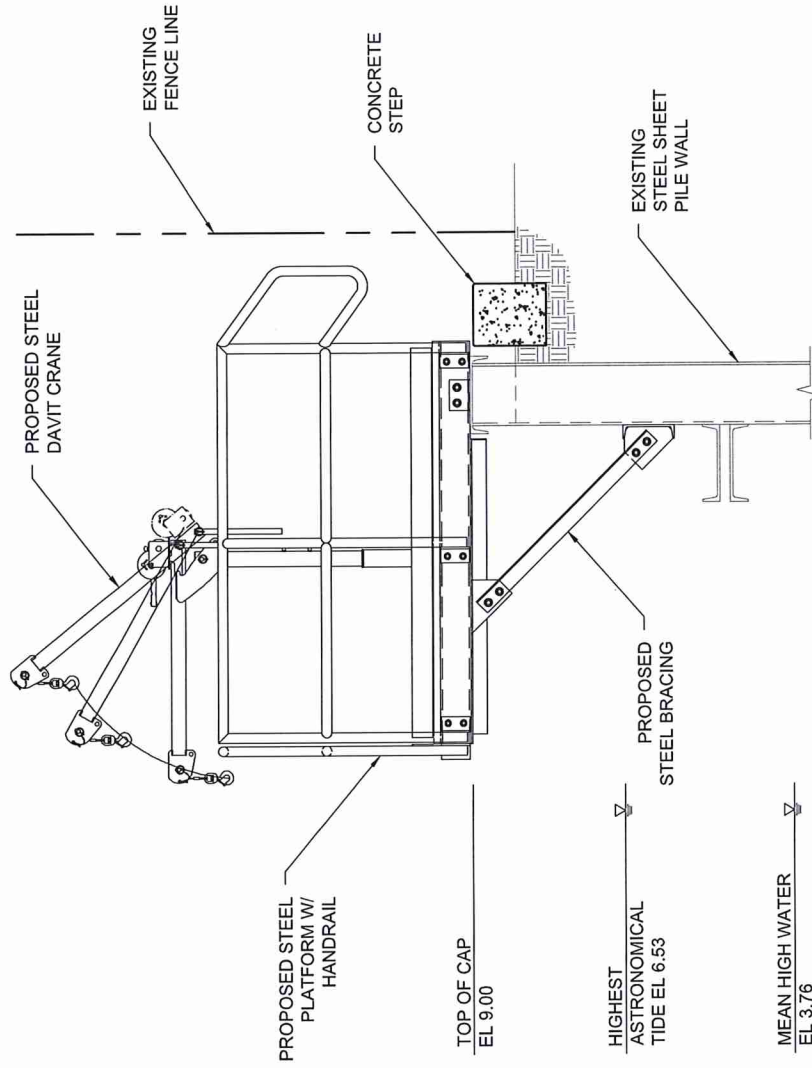
PROPOSED IMPROVEMENTS

GAF BULKHEAD
SAVANNAH RIVER, GEORGIA

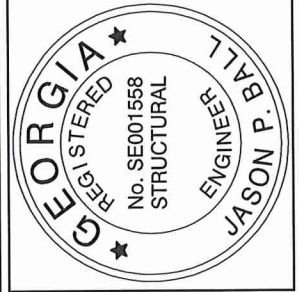
PROPOSED ACTIVITY: TESTING PLATFORMS

Applicant: GAF MATERIALS CORP
Date: 05-06-24
County: CHATHAM
JOB#: 23-1033
SCALE: 1" = 80'
DATUM: NAVD88
SHEET: 4 of 6





TYPICAL SECTION
PLATFORMS 1, 2, & 4
SCALE: N.T.S.



Ball Maritime Group
4 Cedar View Court | Savannah, GA 31410
www.ballmaritime.com | (912) 662-2914
Copyright © 2023

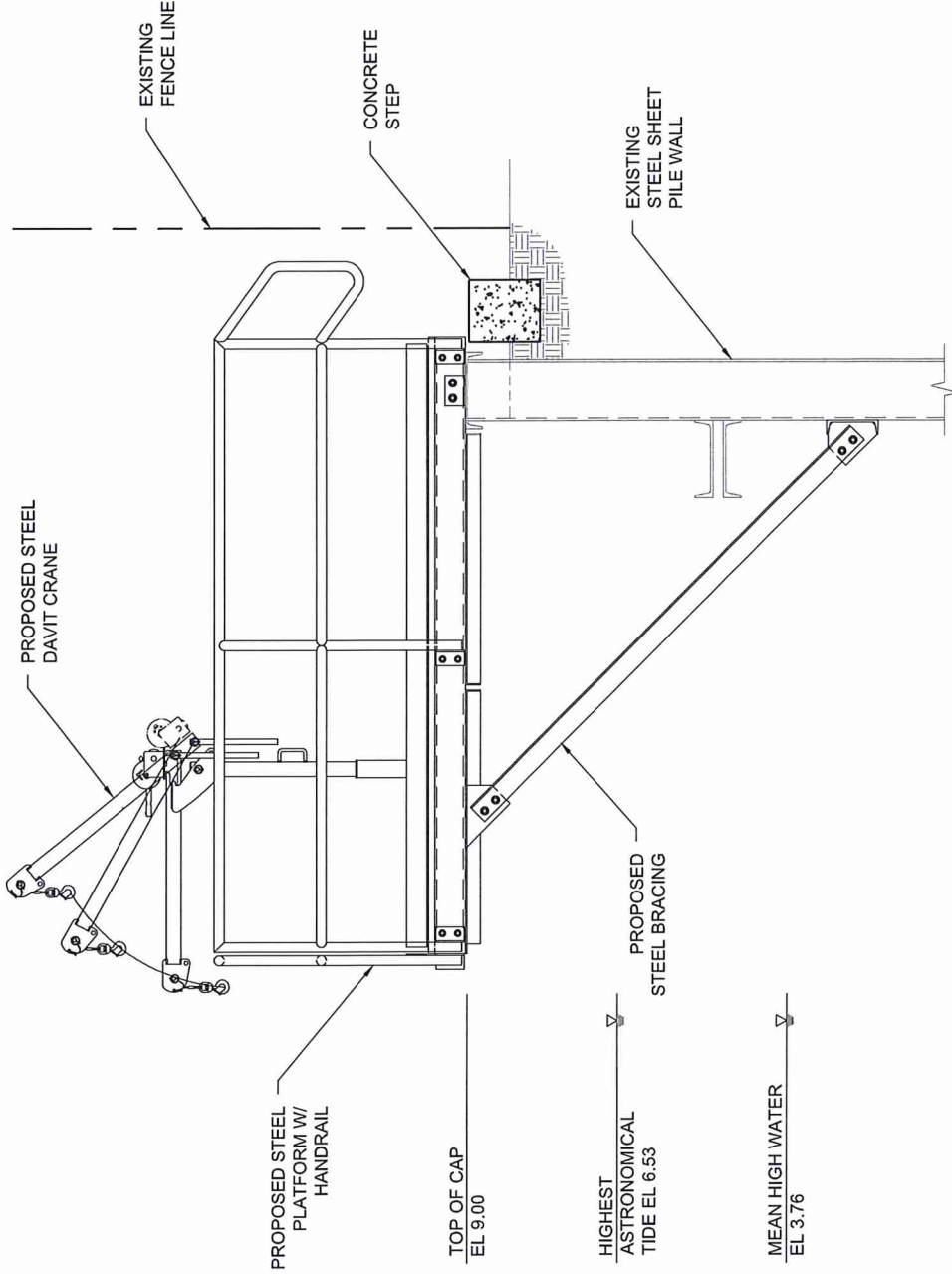
GENERAL NOTES:

TYPICAL SECTION

PROPOSED ACTIVITY: TESTING PLATFORMS

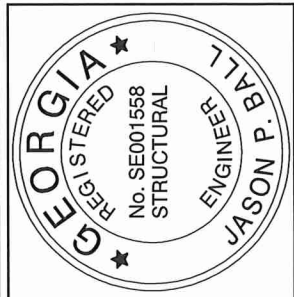
GAF BULKHEAD
SAVANNAH RIVER, GEORGIA

Applicant: GAF MATERIALS CORP
Date: 05-06-24
County: CHATHAM
JOB#: 23-1033
SCALE: N.T.S.
DATUM: NAVD88
SHEET: 5 of 6



TYPICAL SECTION
PLATFORM 3

SCALE: N.T.S.



Ball Maritime Group
 4 Cedar View Court | Savannah, GA 31410
 www.ballmaritime.com | (912) 662-2914
 Copyright © 2023

GENERAL NOTES:

TYPICAL SECTION
 PROPOSED ACTIVITY: TESTING PLATFORMS
 Applicant: GAF MATERIALS CORP
 Date: 05-06-24
 County: CHATHAM
 JOB#: 23-1033
 SCALE: N.T.S.
 DATUM: NAVD88
 SHEET: 6 of 6

GAF BULKHEAD
 SAVANNAH RIVER, GEORGIA