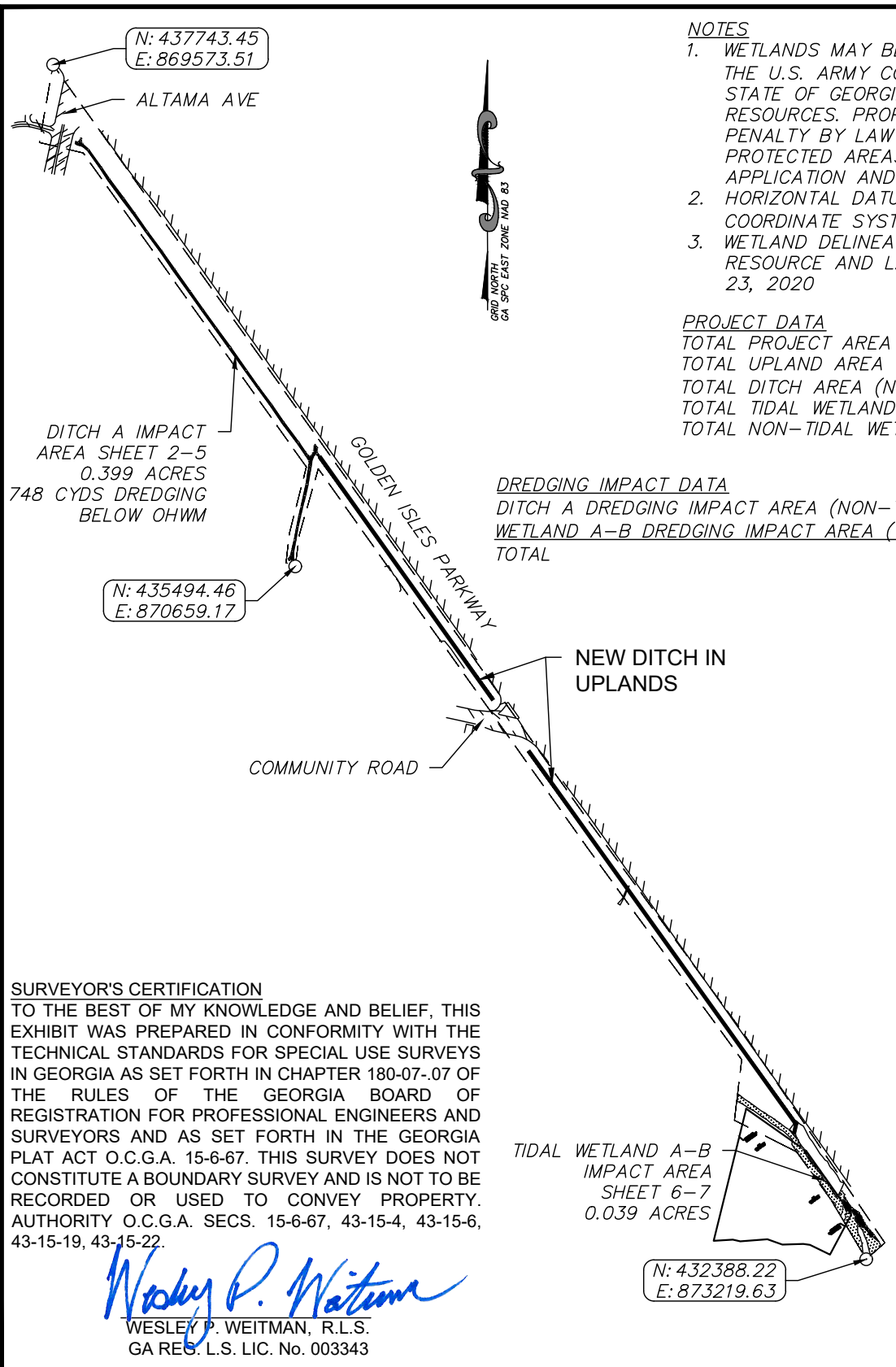


ATTACHMENT B:
PERMIT DRAWINGS



NOTES

1. WETLANDS MAY BE UNDER THE JURISDICTION OF THE U.S. ARMY CORPS OF ENGINEERS AND/OR THE STATE OF GEORGIA DEPARTMENT OF NATURAL RESOURCES. PROPERTY OWNERS ARE SUBJECT TO PENALTY BY LAW FOR DISTURBANCE TO THESE PROTECTED AREAS WITHOUT PROPER PERMIT APPLICATION AND APPROVAL
2. HORIZONTAL DATUM IS GEORGIA STATE PLANE COORDINATE SYSTEM, EAST ZONE (NAD83)
3. WETLAND DELINEATION WAS PERFORMED BY RESOURCE AND LAND CONSULTANTS, LLC. ON JUNE 23, 2020

PROJECT DATA

TOTAL PROJECT AREA	15.61 ACRES
TOTAL UPLAND AREA	14.35 ACRES
TOTAL DITCH AREA (NON-TIDAL)	0.453 ACRES
TOTAL TIDAL WETLAND AREA	0.703 ACRES
TOTAL NON-TIDAL WETLAND AREA	0.100 ACRES

DREDGING IMPACT DATA

DITCH A DREDGING IMPACT AREA (NON-TIDAL)	0.399 ACRES (748 CY)
WETLAND A-B DREDGING IMPACT AREA (TIDAL)	0.039 ACRES (109 CY)
TOTAL	0.438 ACRES (857 CY)

SURVEYOR'S CERTIFICATION

TO THE BEST OF MY KNOWLEDGE AND BELIEF, THIS EXHIBIT WAS PREPARED IN CONFORMITY WITH THE TECHNICAL STANDARDS FOR SPECIAL USE SURVEYS IN GEORGIA AS SET FORTH IN CHAPTER 180-07-.07 OF THE RULES OF THE GEORGIA BOARD OF REGISTRATION FOR PROFESSIONAL ENGINEERS AND SURVEYORS AND AS SET FORTH IN THE GEORGIA PLAT ACT O.C.G.A. 15-6-67. THIS SURVEY DOES NOT CONSTITUTE A BOUNDARY SURVEY AND IS NOT TO BE RECORDED OR USED TO CONVEY PROPERTY. AUTHORITY O.C.G.A. SECS. 15-6-67, 43-15-4, 43-15-6, 43-15-19, 43-15-22.

Wesley P. Weitman

WESLEY P. WEITMAN, R.L.S.
GA RES. L.S. LIC. No. 003343



EMC ENGINEERING SERVICES, INC.
1111 Glynco Parkway,
Bldg #2, Suite 400
Brunswick, GA 31525
Ph: (912) 265-7636
Fax: (912) 233-4580
brunswick@emc-eng.com
www.emc-eng.com

emc
CIVIL MARINE ENVIRONMENTAL

ALBANY • ATLANTA • AUGUSTA • BRUNSWICK
COLUMBUS • SAVANNAH • STATESBORO
THOMASTON • VALDOSTA • WARNER ROBINS

WETLAND IMPACT EXHIBITS KEY MAP

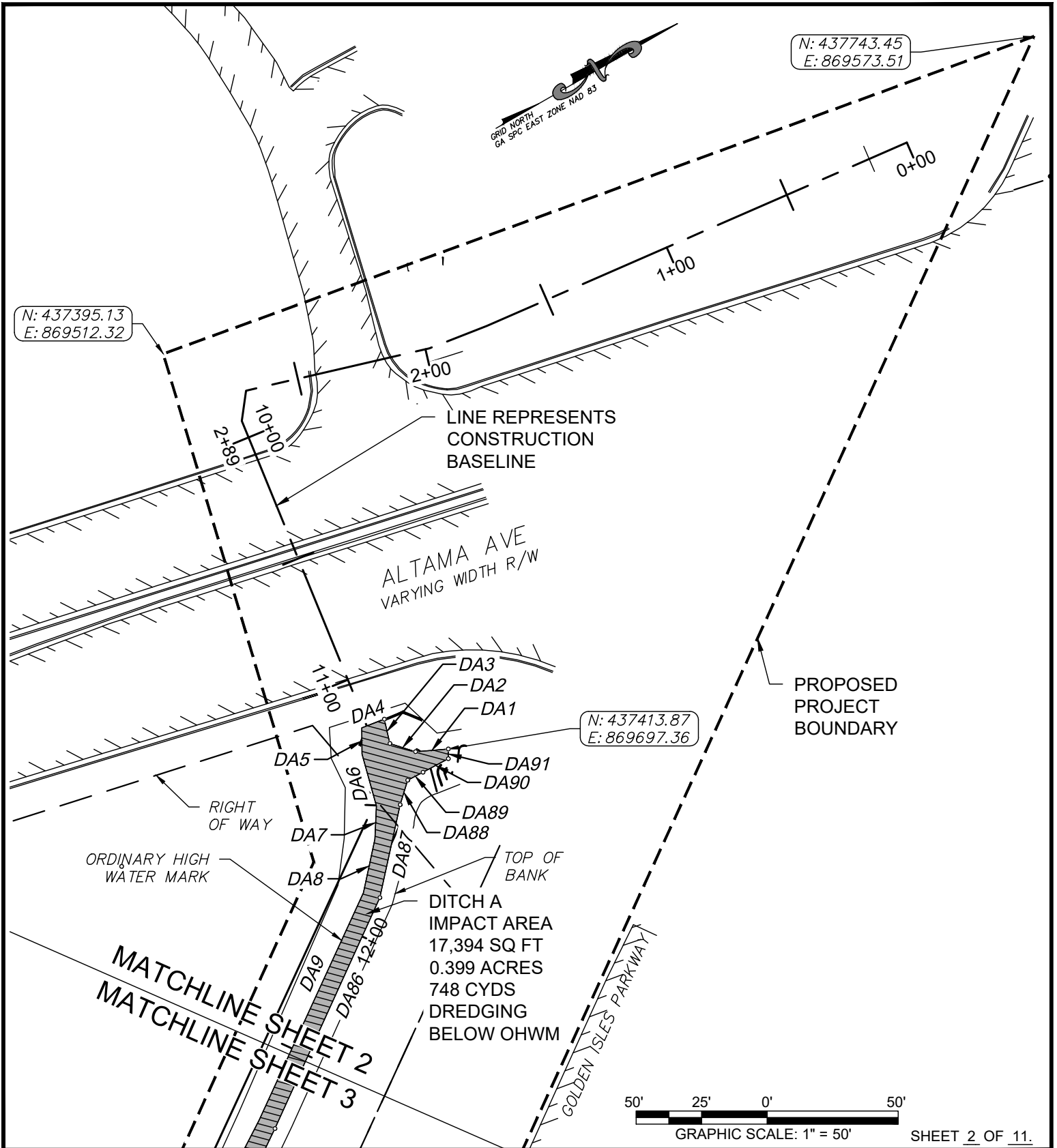
COLLEGE PARK DRAINAGE BASIN IMPROVEMENTS

26TH G.M. DISTRICT

BRUNSWICK, GLYNN COUNTY, GEORGIA

Prepared for:
CITY OF BRUNSWICK AND GLYNN COUNTY

PROJECT NO:	19-5016
DRAWN BY:	KLC
DESIGNED BY:	-
SURVEYED BY:	JH
SURVEY DATE:	6/29/2020
CHECKED BY:	WPW
SCALE:	N/A
DATE:	9/2/2020



SHEET 2 OF 11.

EMC ENGINEERING SERVICES, INC.
 1111 Glynco Parkway,
 Bldg #2, Suite 400
 Brunswick, GA 31525
 Ph: (912) 265-7636
 Fax: (912) 233-4580
 CIVIL MARINE
 brunswick@emc-eng.com
 www.emc-eng.com

ALBANY • ATLANTA • AUGUSTA • BRUNSWICK
 COLUMBUS • SAVANNAH • STATESBORO
 THOMASTON • VALDOSTA • WARNER ROBINS

WETLAND IMPACT EXHIBITS

COLLEGE PARK DRAINAGE BASIN IMPROVEMENTS

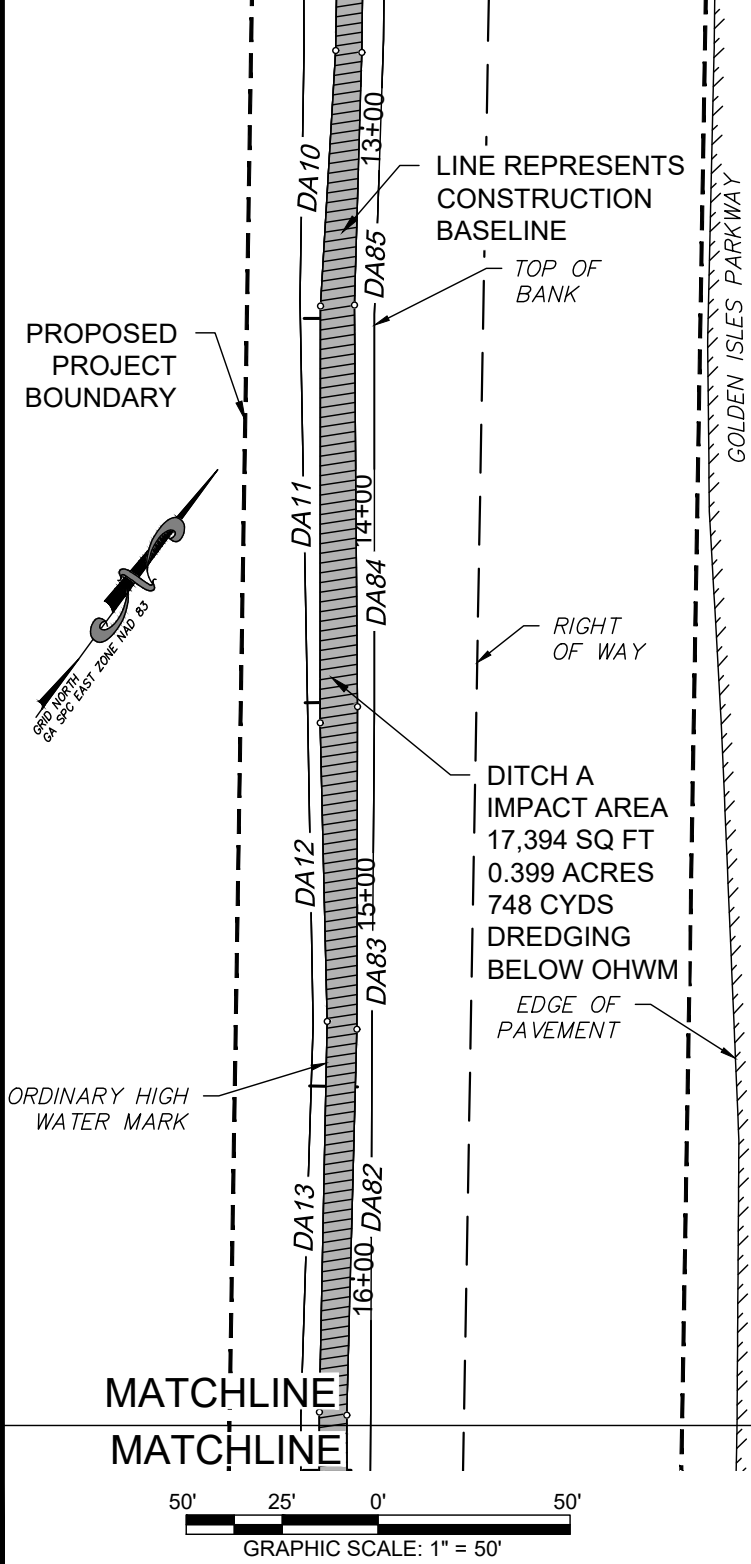
26TH G.M. DISTRICT

BRUNSWICK, GLYNN COUNTY, GEORGIA

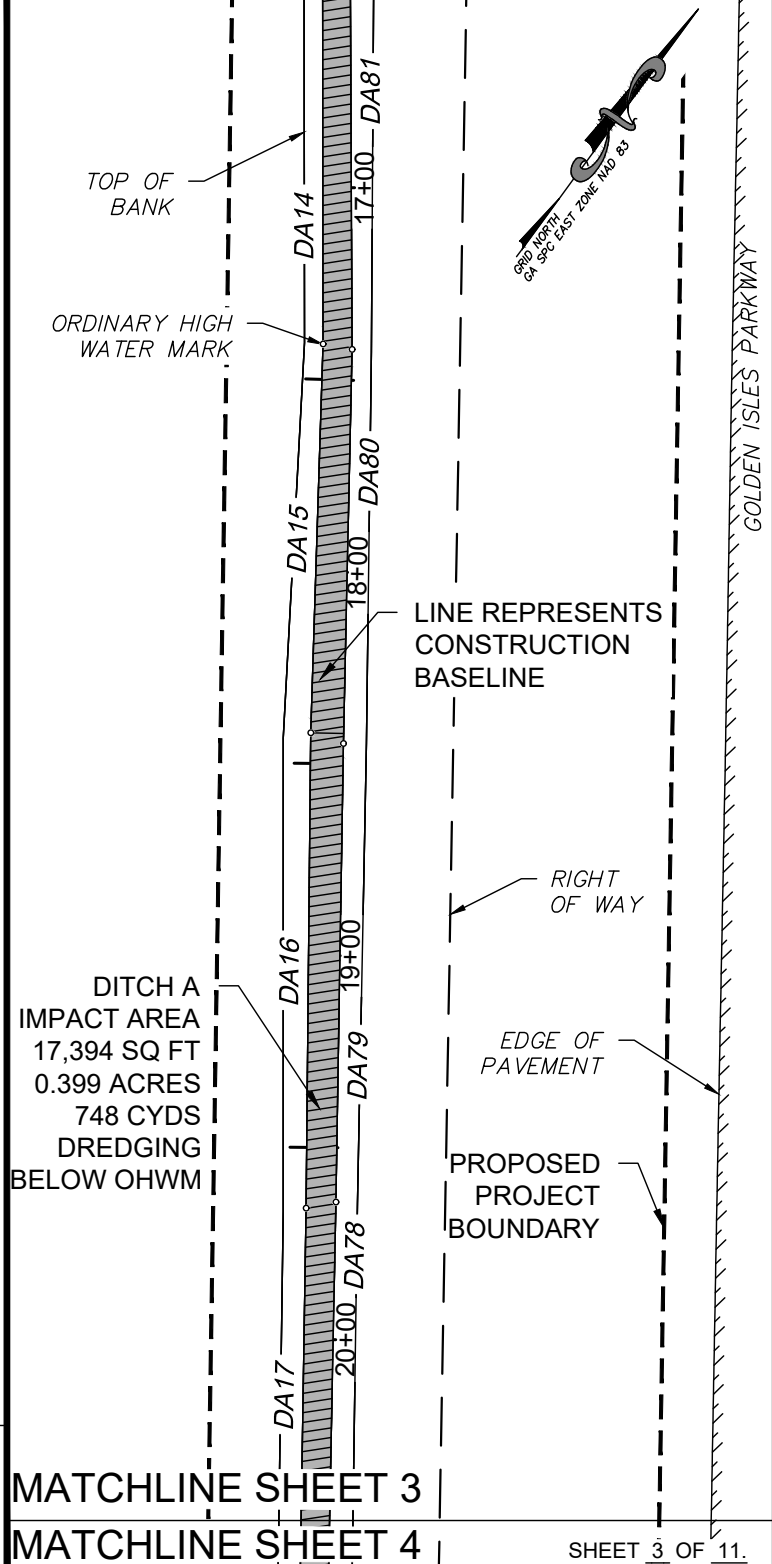
Prepared for:
CITY OF BRUNSWICK AND GLYNN COUNTY

PROJECT NO:	19-5016
DRAWN BY:	KLC
DESIGNED BY:	-
SURVEYED BY:	JH
SURVEY DATE:	6/29/2020
CHECKED BY:	WPW
SCALE:	1" = 50'
DATE:	9/2/2020

MATCHLINE SHEET 2
MATCHLINE SHEET 3



MATCHLINE
MATCHLINE



EMC ENGINEERING SERVICES, INC.
 1111 Glynco Parkway,
 Bldg #2, Suite 400
 Brunswick, GA 31525
 Ph: (912) 265-7636
 Fax: (912) 233-4580
 CIVIL MARINE ENVIRONMENTAL
 brunswick@emc-eng.com
 www.emc-eng.com

ALBANY • ATLANTA • AUGUSTA • BRUNSWICK
 COLUMBUS • SAVANNAH • STATESBORO
 THOMASTON • VALDOSTA • WARNER ROBINS

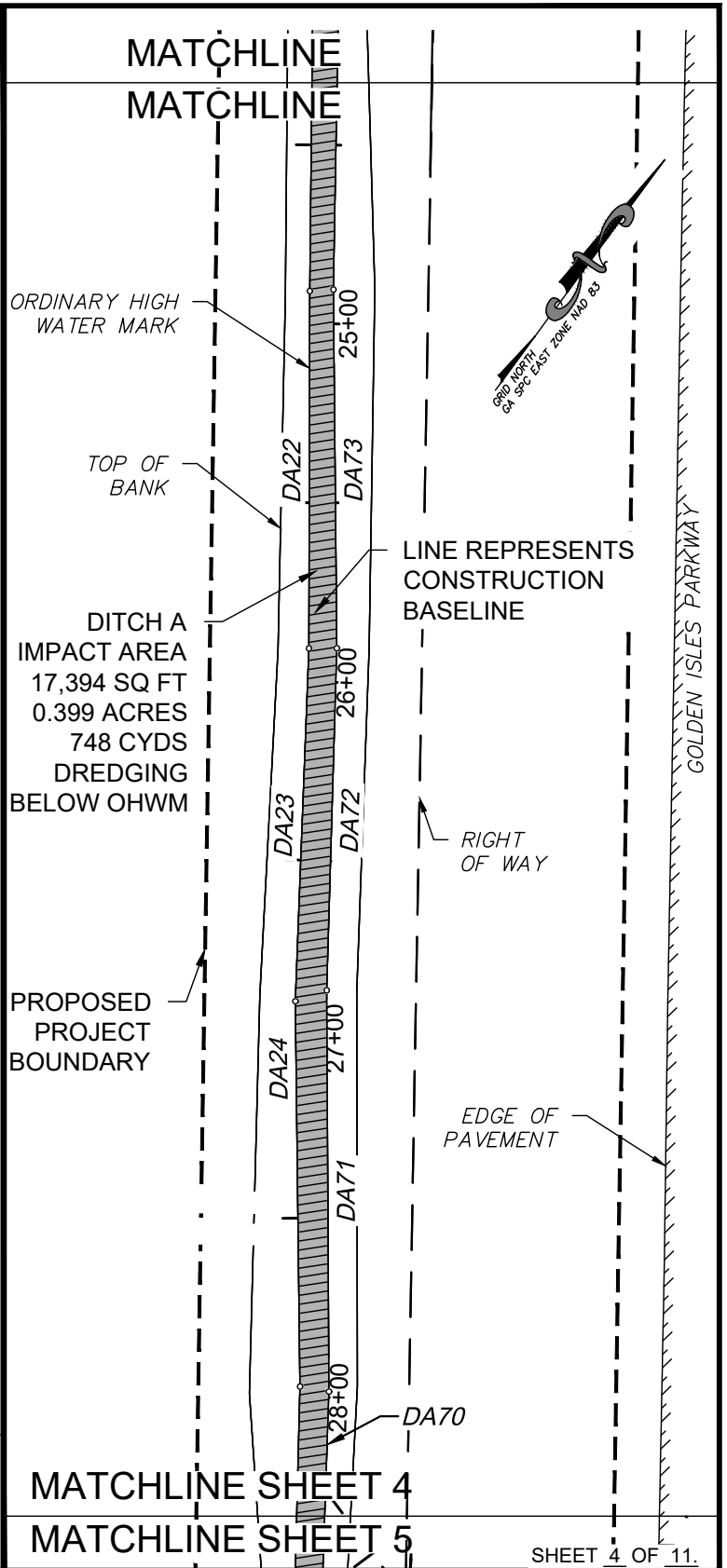
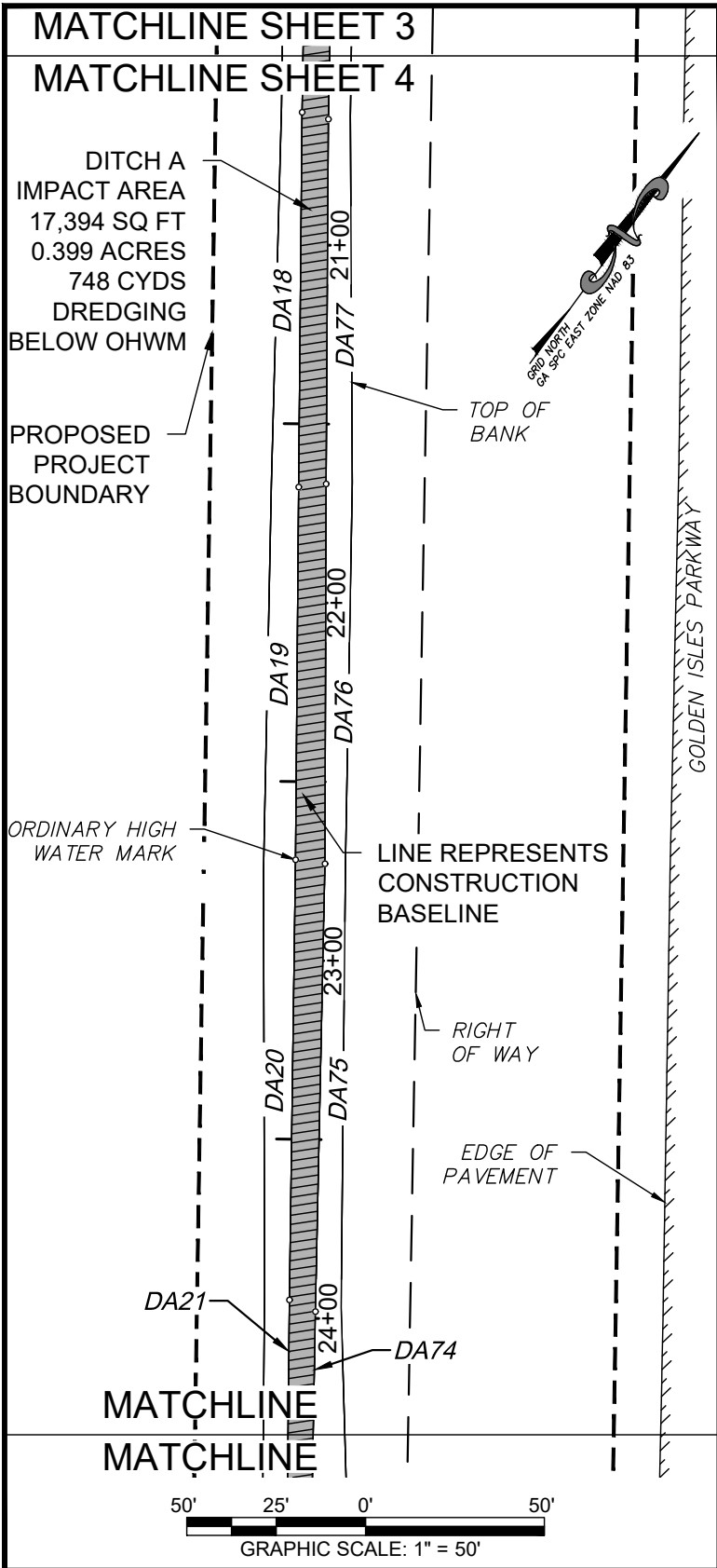
WETLAND IMPACT EXHIBITS

COLLEGE PARK DRAINAGE BASIN IMPROVEMENTS

26TH G.M. DISTRICT
 BRUNSWICK, GLYNN COUNTY, GEORGIA

Prepared for:
CITY OF BRUNSWICK AND GLYNN COUNTY

PROJECT NO:	19-5016
DRAWN BY:	KLC
DESIGNED BY:	-
SURVEYED BY:	JH
SURVEY DATE:	6/29/2020
CHECKED BY:	WPW
SCALE:	1" = 50'
DATE:	9/2/2020



EMC ENGINEERING SERVICES, INC.
 1111 Glynco Parkway,
 Bldg #2, Suite 400
 Brunswick, GA 31525
 Ph: (912) 265-7636
 Fax: (912) 233-4580
 CIVIL MARINE ENVIRONMENTAL
 brunswick@emc-eng.com
 www.emc-eng.com

WETLAND IMPACT EXHIBITS

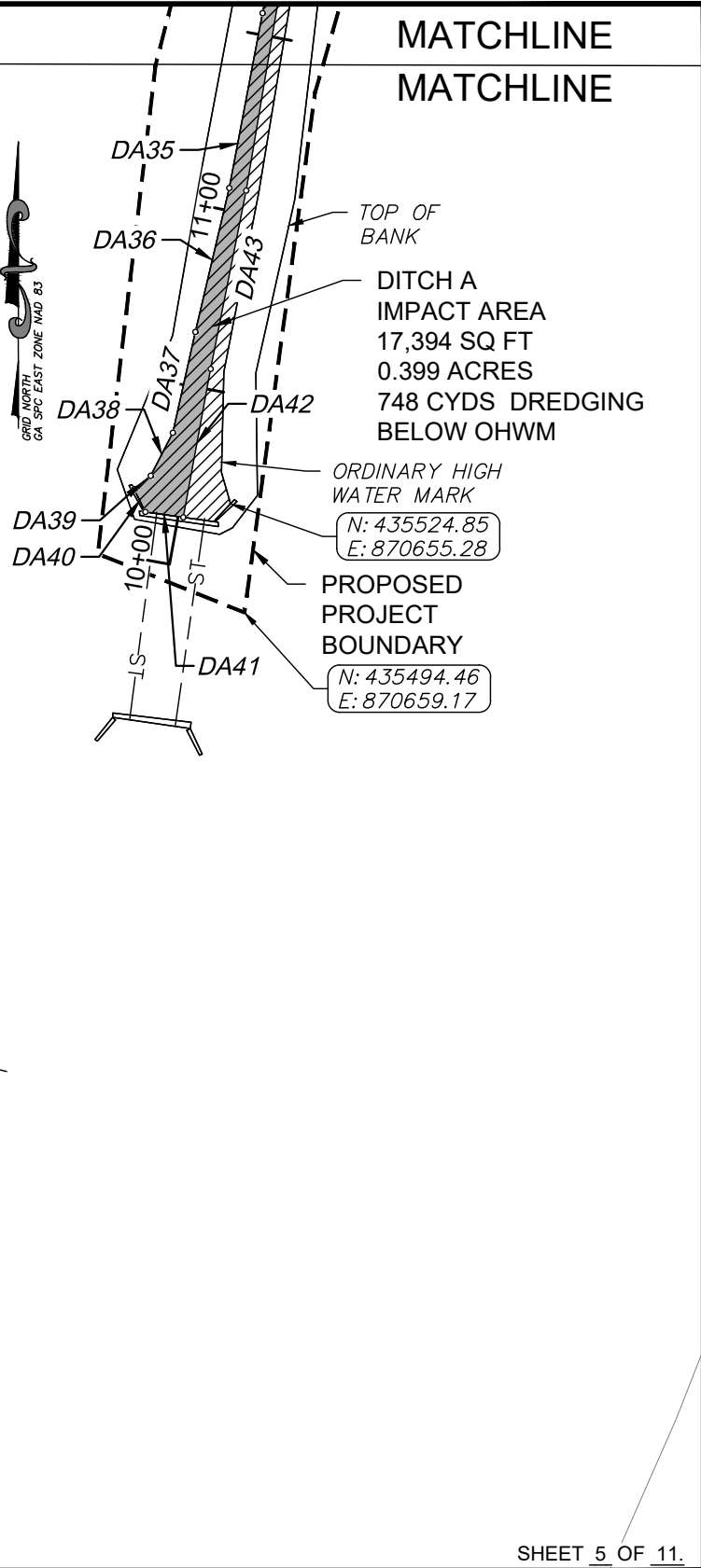
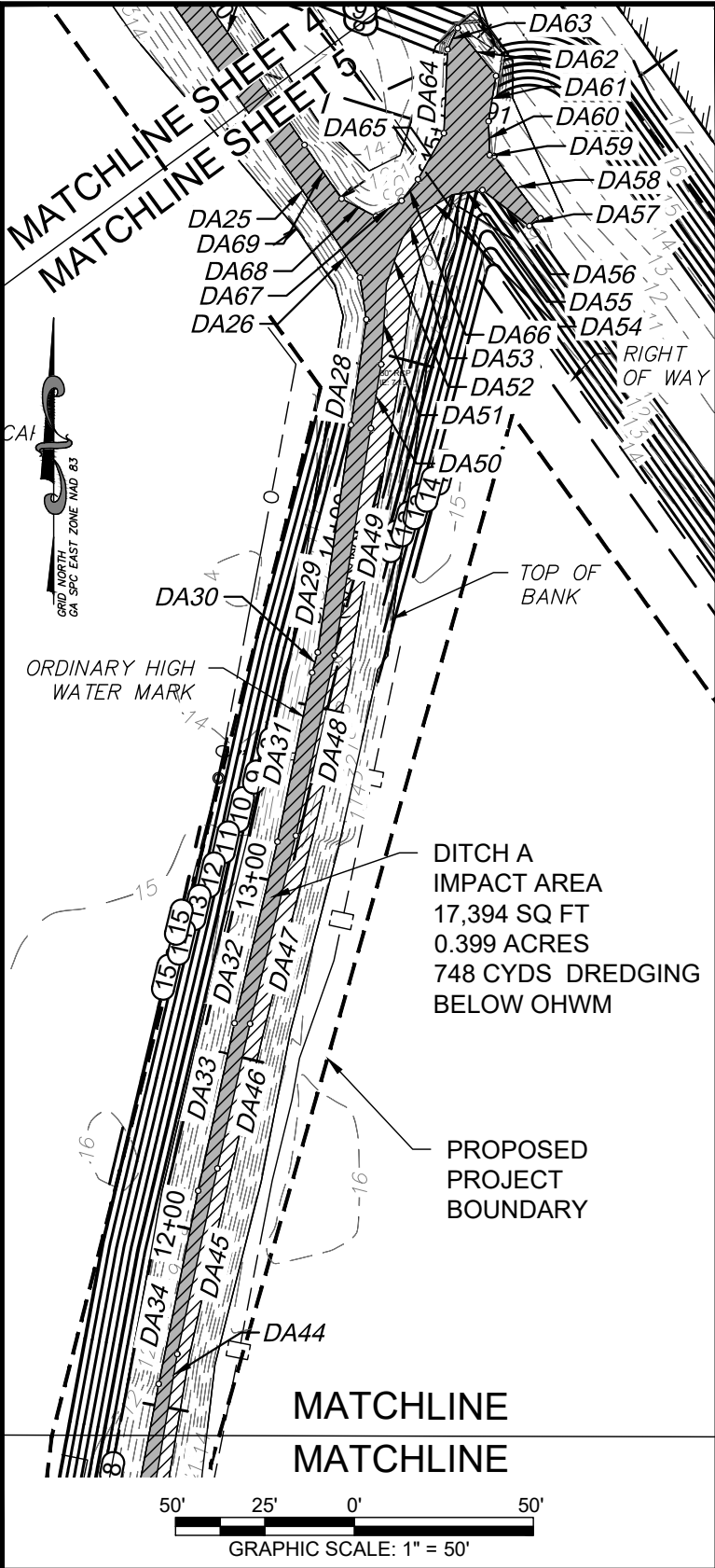
COLLEGE PARK DRAINAGE BASIN IMPROVEMENTS

26TH G.M. DISTRICT

BRUNSWICK, GLYNN COUNTY, GEORGIA

Prepared for:
CITY OF BRUNSWICK AND GLYNN COUNTY

PROJECT NO:	19-5016
DRAWN BY:	KLC
DESIGNED BY:	-
SURVEYED BY:	JH
SURVEY DATE:	6/29/2020
CHECKED BY:	WPW
SCALE:	1" = 50'
DATE:	9/2/2020



SHEET 5 OF 11.

EMC ENGINEERING SERVICES, INC.
1111 Glynco Parkway,
Bldg #2, Suite 400
Brunswick, GA 31525
Ph: (912) 265-7636
Fax: (912) 233-4580
CIVIL MARINE ENVIRONMENTAL
brunswick@emc-eng.com
www.emc-eng.com

ALBANY • ATLANTA • AUGUSTA • BRUNSWICK
COLUMBUS • SAVANNAH • STATESBORO
THOMASTON • VALDOSTA • WARNER ROBINS

WETLAND IMPACT EXHIBITS

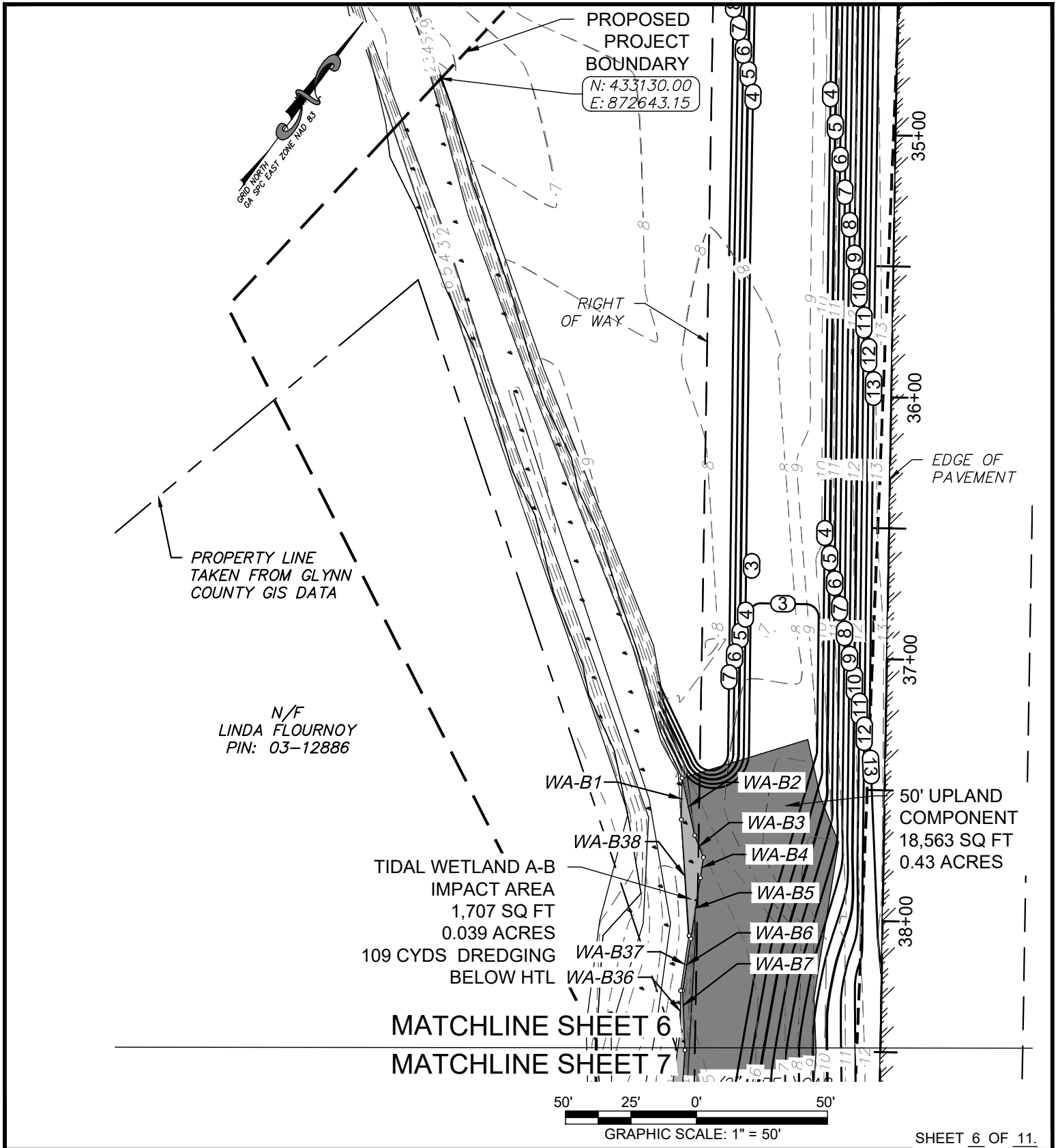
COLLEGE PARK DRAINAGE BASIN IMPROVEMENTS

26TH G.M. DISTRICT

BRUNSWICK, GLYNN COUNTY, GEORGIA

Prepared for:
CITY OF BRUNSWICK AND GLYNN COUNTY

PROJECT NO:	19-5016
DRAWN BY:	KLC
DESIGNED BY:	-
SURVEYED BY:	JH
SURVEY DATE:	6/29/2020
CHECKED BY:	WPW
SCALE:	1" = 50'
DATE:	9/2/2020



SHEET 6 OF 11.

EMC ENGINEERING SERVICES, INC.
 1111 Glyngo Parkway,
 Bldg #2, Suite 400
 Brunswick, GA 31525
 Ph: (912) 265-7636
 Fax: (912) 233-4580
 CIVIL
 MARINE
 ENVIRONMENTAL
 brunswick@emc-eng.com
 www.emc-eng.com

ALBANY • ATLANTA • AUGUSTA • BRUNSWICK
 COLUMBUS • SAVANNAH • STATESBORO
 THOMASTON • VALDOSTA • WARNER ROBINS

WETLAND IMPACT EXHIBITS

COLLEGE PARK DRAINAGE BASIN IMPROVEMENTS

26TH G.M. DISTRICT

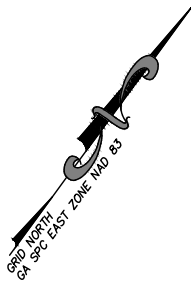
BRUNSWICK, GLYNN COUNTY, GEORGIA

Prepared for:
 CITY OF BRUNSWICK AND GLYNN COUNTY

PROJECT NO:	19-5016
DRAWN BY:	KLC
DESIGNED BY:	-
SURVEYED BY:	JH
SURVEY DATE:	6/29/2020
CHECKED BY:	WPW
SCALE:	1" = 50'
DATE:	9/2/2020

MATCHLINE SHEET 6

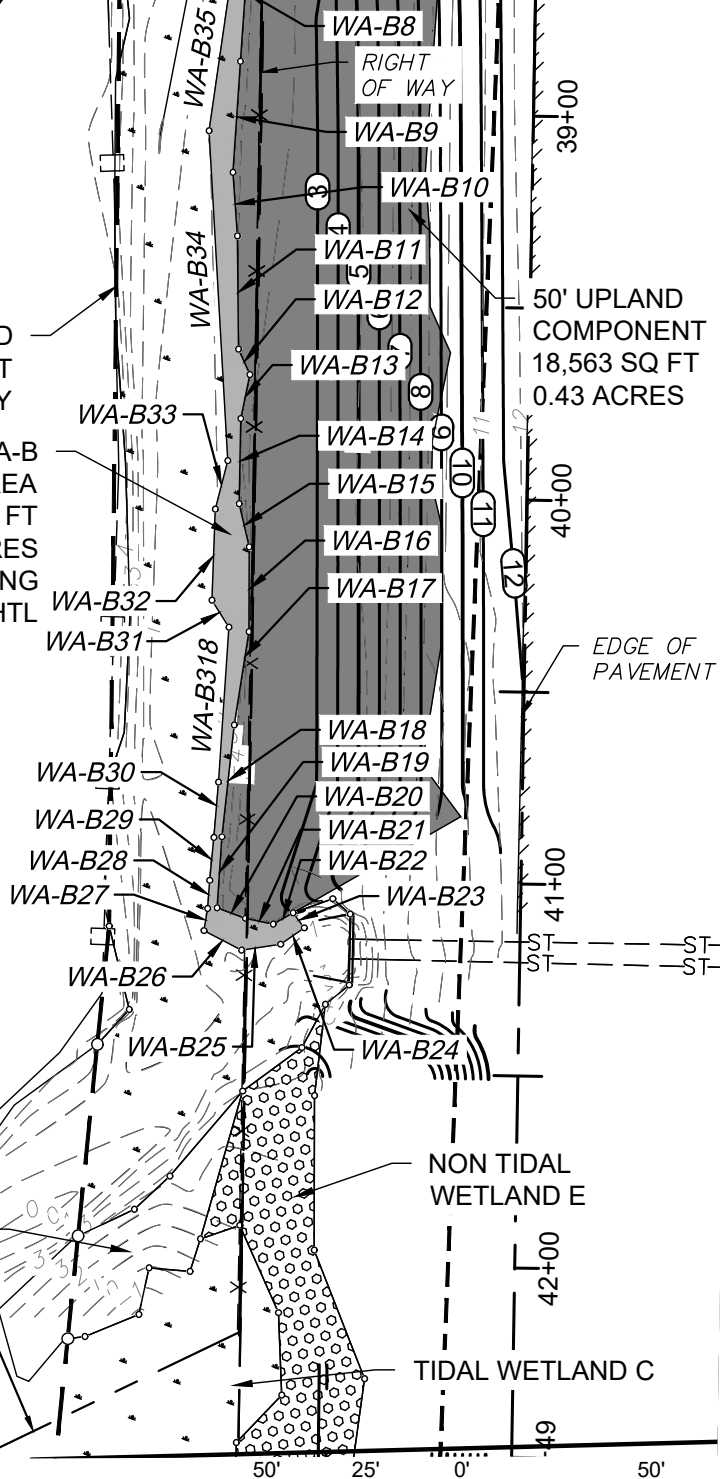
MATCHLINE SHEET 7



PROPOSED PROJECT BOUNDARY
TIDAL WETLAND A-B IMPACT AREA
1,707 SQ FT
0.039 ACRES
109 CYDS DREDGING BELOW HTL

N/F
LINDA FLOURNOY
PIN: 03-12886

PROPERTY LINE
TAKEN FROM GLYNN COUNTY GIS DATA



GRAPHIC SCALE: 1" = 50'

SHEET 7 OF 11.

EMC ENGINEERING SERVICES, INC.
1111 Glynco Parkway,
Bldg #2, Suite 400
Brunswick, GA 31525
Ph: (912) 265-7636
Fax: (912) 233-4580
brunswick@emc-eng.com
www.emc-eng.com

emc
CIVIL MARINE ENVIRONMENTAL

ALBANY • ATLANTA • AUGUSTA • BRUNSWICK
COLUMBUS • SAVANNAH • STATESBORO
THOMASTON • VALDOSTA • WARNER ROBINS

WETLAND IMPACT EXHIBITS

COLLEGE PARK DRAINAGE BASIN IMPROVEMENTS

26TH G.M. DISTRICT
BRUNSWICK, GLYNN COUNTY, GEORGIA

Prepared for:
CITY OF BRUNSWICK AND GLYNN COUNTY

PROJECT NO:	19-5016
DRAWN BY:	KLC
DESIGNED BY:	-
SURVEYED BY:	JH
SURVEY DATE:	6/29/2020
CHECKED BY:	WPW
SCALE:	1" = 50'
DATE:	9/2/2020

LINE TABLE DITCH A IMPACT AREA			LINE TABLE DITCH A IMPACT AREA			LINE TABLE DITCH A IMPACT AREA		
LINE#	DIRECTION	LENGTH	LINE#	DIRECTION	LENGTH	LINE#	DIRECTION	LENGTH
DA1	S25° 18' 07"W	12.52	DA32	S13° 18' 13"W	52.04	DA63	S24° 51' 00"W	6.56
DA2	S47° 44' 41"W	10.30	DA33	S12° 16' 05"W	47.89	DA64	S02° 35' 42"W	23.38
DA3	N72° 58' 27"W	9.50	DA34	S11° 32' 48"W	55.04	DA65	S29° 13' 29"W	14.84
DA4	S09° 15' 15"W	9.19	DA35	S10° 45' 51"W	49.71	DA66	S37° 33' 10"W	7.49
DA5	S60° 34' 00"E	10.01	DA36	S13° 13' 02"W	41.28	DA67	S58° 44' 29"W	8.44
DA6	S75° 32' 21"E	20.58	DA37	S12° 37' 57"W	28.83	DA68	N62° 41' 25"W	10.73
DA7	S57° 23' 38"E	12.71	DA38	S27° 10' 21"W	13.53	DA69	N34° 40' 16"W	18.29
DA8	S47° 52' 56"E	20.90	DA39	S51° 30' 52"W	5.91	DA70	N34° 20' 28"W	52.87
DA9	S35° 21' 46"E	95.59	DA40	S26° 15' 53"E	7.12	DA71	N36° 36' 48"W	112.15
DA10	S32° 53' 33"E	66.64	DA41	S82° 00' 17"E	10.67	DA72	N34° 35' 12"W	95.66
DA11	S36° 15' 19"E	108.54	DA42	N10° 26' 09"E	42.11	DA73	N36° 50' 39"W	100.27
DA12	S37° 38' 39"E	77.78	DA43	N11° 15' 01"E	50.77	DA74	N35° 16' 04"W	92.28
DA13	S35° 07' 53"E	101.79	DA44	N09° 34' 31"E	58.69	DA75	N35° 03' 47"W	125.17
DA14	S36° 21' 03"E	105.85	DA45	N12° 10' 33"E	53.04	DA76	N36° 07' 32"W	106.20
DA15	S34° 28' 30"E	101.30	DA46	N12° 45' 29"E	41.37	DA77	N35° 57' 10"W	101.95
DA16	S35° 44' 38"E	123.80	DA47	N13° 41' 53"E	54.10	DA78	N35° 09' 06"W	100.63
DA17	S35° 22' 32"E	97.15	DA48	N12° 06' 15"E	51.43	DA79	N35° 21' 17"W	119.43
DA18	S35° 45' 56"E	104.75	DA49	N09° 06' 18"E	64.21	DA80	N35° 01' 54"W	102.66
DA19	S35° 48' 30"E	104.14	DA50	N09° 07' 45"E	18.13	DA81	N36° 34' 10"W	106.49
DA20	S35° 29' 58"E	123.09	DA51	N03° 51' 42"E	22.39	DA82	N34° 49' 06"W	100.53
DA21	S35° 41' 20"E	95.93	DA52	N19° 03' 20"E	13.60	DA83	N36° 09' 31"W	84.01
DA22	S36° 09' 21"E	99.85	DA53	N34° 47' 30"E	8.04	DA84	N36° 44' 26"W	104.55
DA23	S34° 06' 01"E	98.70	DA54	N59° 14' 07"E	10.80	DA85	N34° 36' 30"W	65.85
DA24	S36° 59' 04"E	107.73	DA55	N80° 59' 32"E	8.58	DA86	N35° 34' 28"W	96.84
DA25	S34° 49' 09"E	73.17	DA56	S52° 26' 13"E	16.52	DA87	N47° 39' 51"W	36.28
DA26	S32° 47' 59"E	20.18	DA57	N55° 04' 29"E	3.76	DA88	N42° 49' 38"W	9.85
DA27	S08° 26' 47"E	11.83	DA58	N36° 36' 01"W	21.65	DA89	N02° 22' 34"E	6.56
DA28	S08° 19' 26"W	29.75	DA59	N77° 02' 42"W	1.26	DA90	N02° 01' 53"E	10.95
DA29	S08° 19' 29"W	64.18	DA60	N02° 09' 23"W	9.40	DA91	N60° 02' 19"W	3.71
DA30	S15° 32' 52"W	5.88	DA61	N09° 12' 28"E	12.91			
DA31	S11° 34' 00"W	48.20	DA62	N38° 49' 34"W	17.08			

SHEET 8 OF 11.

EMC ENGINEERING SERVICES, INC.
 1111 Glyngo Parkway,
 Bldg #2, Suite 400
 Brunswick, GA 31525
 Ph: (912) 265-7636
 Fax: (912) 233-4580
 CIVIL
 MARINE
 ENVIRONMENTAL
 brunswick@emc-eng.com
 www.emc-eng.com

ALBANY • ATLANTA • AUGUSTA • BRUNSWICK
 COLUMBUS • SAVANNAH • STATESBORO
 THOMASTON • VALDOSTA • WARNER ROBINS

WETLAND IMPACT EXHIBITS

COLLEGE PARK DRAINAGE BASIN IMPROVEMENTS

26TH G.M. DISTRICT

BRUNSWICK, GLYNN COUNTY, GEORGIA

Prepared for:
CITY OF BRUNSWICK AND GLYNN COUNTY

PROJECT NO:	19-5016
DRAWN BY:	KLC
DESIGNED BY:	-
SURVEYED BY:	JH
SURVEY DATE:	6/29/2020
CHECKED BY:	WPW
SCALE:	N/A
DATE:	9/2/2020

LINE TABLE WETLAND A-B IMPACT		
LINE#	DIRECTION	LENGTH
WA-B1	N35° 11' 31"W	15.83
WA-B2	S48° 36' 19"E	22.39
WA-B3	S58° 08' 00"E	9.09
WA-B4	S27° 25' 37"E	7.81
WA-B5	S27° 22' 59"E	23.60
WA-B6	S27° 21' 23"E	20.07
WA-B7	S38° 34' 11"E	22.72
WA-B8	S32° 18' 48"E	36.55
WA-B9	S32° 27' 14"E	28.98
WA-B10	S40° 19' 03"E	16.59
WA-B11	S36° 50' 21"E	29.50
WA-B12	S60° 28' 39"E	7.26
WA-B13	S24° 35' 02"E	11.72
WA-B14	S35° 09' 49"E	22.16
WA-B15	S49° 31' 04"E	11.57
WA-B16	S36° 02' 20"E	22.05
WA-B17	S27° 17' 35"E	24.61
WA-B18	S30° 02' 19"E	29.27
WA-B19	S32° 23' 46"E	18.56

LINE TABLE WETLAND A-B IMPACT		
LINE#	DIRECTION	LENGTH
WA-B20	N74° 06' 31"E	7.87
WA-B21	N65° 33' 46"E	7.41
WA-B22	N23° 51' 45"E	5.97
WA-B23	S72° 58' 29"E	4.86
WA-B24	S18° 51' 10"W	7.50
WA-B25	S45° 07' 43"W	10.29
WA-B26	S81° 14' 54"W	11.06
WA-B27	N26° 40' 19"W	5.83
WA-B28	N32° 12' 21"W	7.31
WA-B29	N30° 43' 53"W	11.25
WA-B30	N31° 24' 31"W	14.45
WA-B31	N68° 29' 27"W	8.29
WA-B32	N34° 10' 34"W	23.73
WA-B33	N21° 49' 17"W	13.03
WA-B34	N39° 31' 30"W	86.08
WA-B35	N28° 06' 37"W	62.47
WA-B36	N35° 45' 18"W	15.41
WA-B37	N27° 35' 17"W	21.31
WA-B38	N40° 07' 32"W	44.38

EMC ENGINEERING SERVICES, INC.
 1111 Glyngo Parkway,
 Bldg #2, Suite 400
 Brunswick, GA 31525
 Ph: (912) 265-7636
 Fax: (912) 233-4580
 brunswick@emc-eng.com
 www.emc-eng.com

emc
 CIVIL
 MARINE
 ENVIRONMENTAL

ALBANY • ATLANTA • AUGUSTA • BRUNSWICK
 COLUMBUS • SAVANNAH • STATESBORO
 THOMASTON • VALDOSTA • WARNER ROBINS

WETLAND IMPACT EXHIBITS

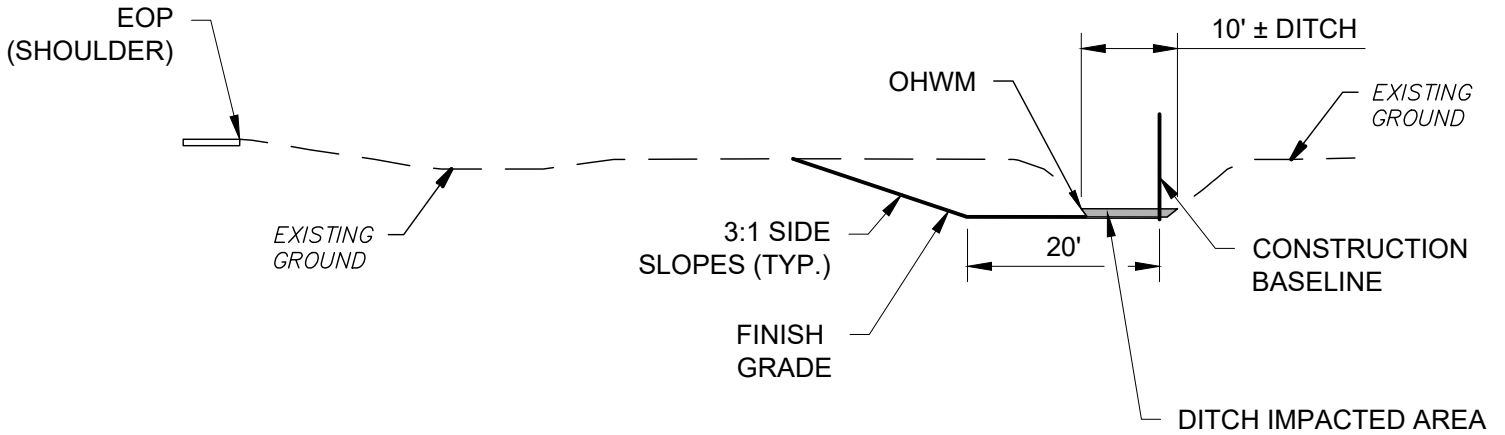
COLLEGE PARK DRAINAGE BASIN IMPROVEMENTS

26TH G.M. DISTRICT

BRUNSWICK, GLYNN COUNTY, GEORGIA

Prepared for:
CITY OF BRUNSWICK AND GLYNN COUNTY

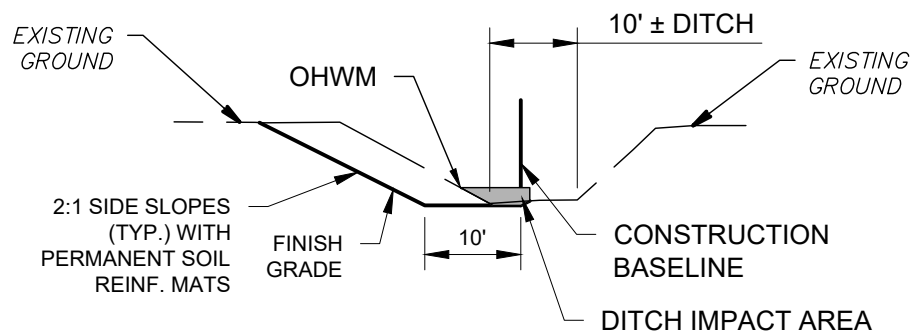
PROJECT NO: 19-5016
 DRAWN BY: KLC
 DESIGNED BY: -
 SURVEYED BY: JH
 SURVEY DATE: 6/29/2020
 CHECKED BY: WPW
 SCALE: N/A
 DATE: 9/2/2020



PROPOSED DITCH IMPACT SECTION #1

DITCH A (NON-TIDAL)

IMPACTS = 576 CUBIC YARDS DREDGING BELOW OHWM



PROPOSED DITCH IMPACT SECTION #2

DITCH A (NON-TIDAL)

IMPACTS = 172 CUBIC YARDS DREDGING BELOW OHWM

SHEET 10 OF 11.

EMC ENGINEERING SERVICES, INC.
 1111 Glyngo Parkway,
 Bldg #2, Suite 400
 Brunswick, GA 31525
 Ph: (912) 265-7636
 Fax: (912) 233-4580
 CIVIL
 MARINE
 ENVIRONMENTAL
 brunswick@emc-eng.com
 www.emc-eng.com

ALBANY • ATLANTA • AUGUSTA • BRUNSWICK
 COLUMBUS • SAVANNAH • STATESBORO
 THOMASTON • VALDOSTA • WARNER ROBINS

WETLAND IMPACT EXHIBITS CROSS SECTIONS

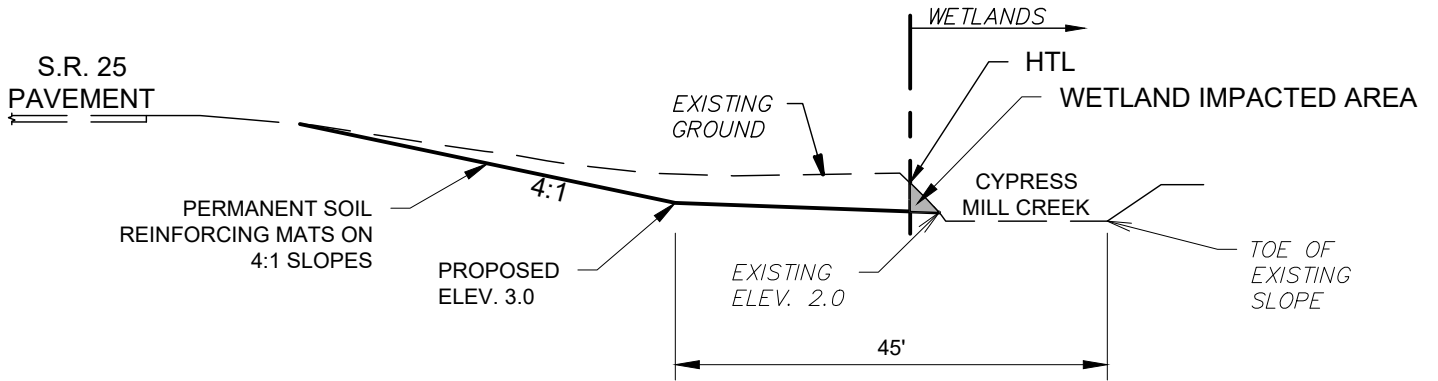
COLLEGE PARK DRAINAGE BASIN IMPROVEMENTS

26TH G.M. DISTRICT

BRUNSWICK, GLYNN COUNTY, GEORGIA

Prepared for:
CITY OF BRUNSWICK AND GLYNN COUNTY

PROJECT NO:	19-5016
DRAWN BY:	KLC
DESIGNED BY:	-
SURVEYED BY:	JH
SURVEY DATE:	6/29/2020
CHECKED BY:	WPW
SCALE:	N/A
DATE:	9/2/2020



PROPOSED WETLAND IMPACT SECTION #3

WETLAND A-B (TIDAL)

IMPACTS = 109 CUBIC YARDS DREDGING BELOW HTL

SHEET 11 OF 11.

EMC ENGINEERING SERVICES, INC.
 1111 Glyngo Parkway,
 Bldg #2, Suite 400
 Brunswick, GA 31525
 Ph: (912) 265-7636
 Fax: (912) 233-4580
 brunswick@emc-eng.com
 www.emc-eng.com

emc
 CIVIL
 MARINE
 ENVIRONMENTAL

ALBANY • ATLANTA • AUGUSTA • BRUNSWICK
 COLUMBUS • SAVANNAH • STATESBORO
 THOMASTON • VALDOSTA • WARNER ROBINS

WETLAND IMPACT EXHIBITS CROSS SECTIONS

COLLEGE PARK DRAINAGE BASIN IMPROVEMENTS

26TH G.M. DISTRICT

BRUNSWICK, GLYNN COUNTY, GEORGIA

Prepared for:
 CITY OF BRUNSWICK AND GLYNN COUNTY

PROJECT NO:	19-5016
DRAWN BY:	KLC
DESIGNED BY:	-
SURVEYED BY:	JH
SURVEY DATE:	6/29/2020
CHECKED BY:	WPW
SCALE:	N/A
DATE:	9/2/2020