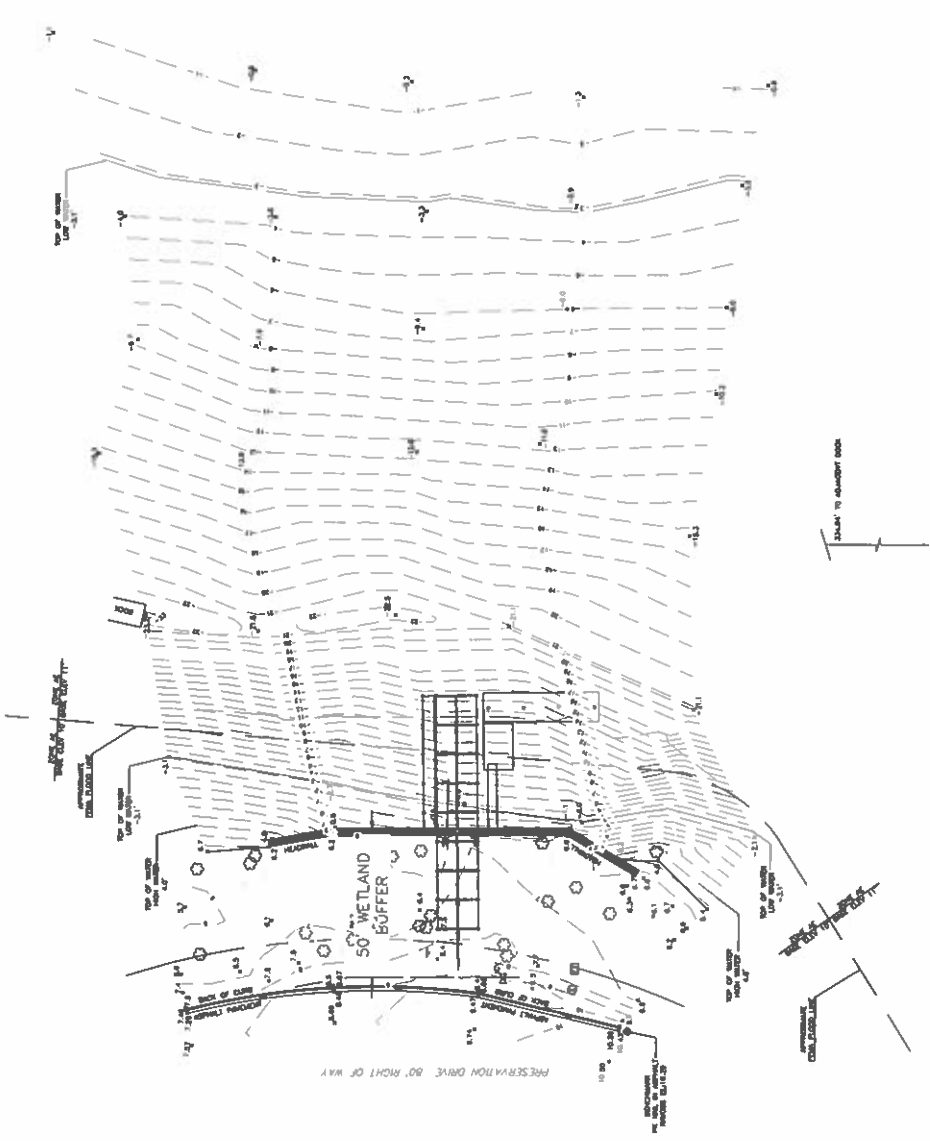


COASTAL PERMITTING
SERVICES, LLC
912-877-5241

PORTIONS OF JERICO RIVER & DOLPHIN ISLAND SUBDIVISION
A TOPOGRAPHIC SURVEY OF
139TH G.M. DISTRICT, LIBERTY COUNTY, GEORGIA
PREPARED FOR
DOLPHINS ISLAND HOME OWNERS ASSOCIATION

SCALED FOR 11X17" PAPER
SHEET SIZE [B]

DATE: 11/11/11
DRAWN BY: [Name]
CHECKED BY: [Name]
SCALE: AS SHOWN



SURVEYOR'S NOTES

1. THE ELEVATIONS SHOWN ARE BASED ON NAVD83 DATA. THE CONTOUR INTERVAL IS 1.00 FEET.
2. CONTOUR LINES AND BOUNDARIES ARE BASED ON SURFACE ELEVATION DATA.
3. ACCURACY OF THE DATA IS AS SHOWN BY THE ACCURACY STATEMENT.
4. THE DATA WAS COLLECTED USING A TOTAL STATION AND A GPS RECEIVER.
5. THE DATA WAS COLLECTED ON 11/11/11.
6. THE DATA WAS COLLECTED BY [Name].
7. THE DATA WAS CHECKED BY [Name].
8. THE DATA WAS APPROVED BY [Name].
9. THE DATA WAS APPROVED BY [Name].
10. THE DATA WAS APPROVED BY [Name].

LEGEND

- 50' WETLAND BUFFER
- 50' WETLAND BUFFER
- 50' WETLAND BUFFER
- 50' WETLAND BUFFER
- 50' WETLAND BUFFER

DATE LEGEND

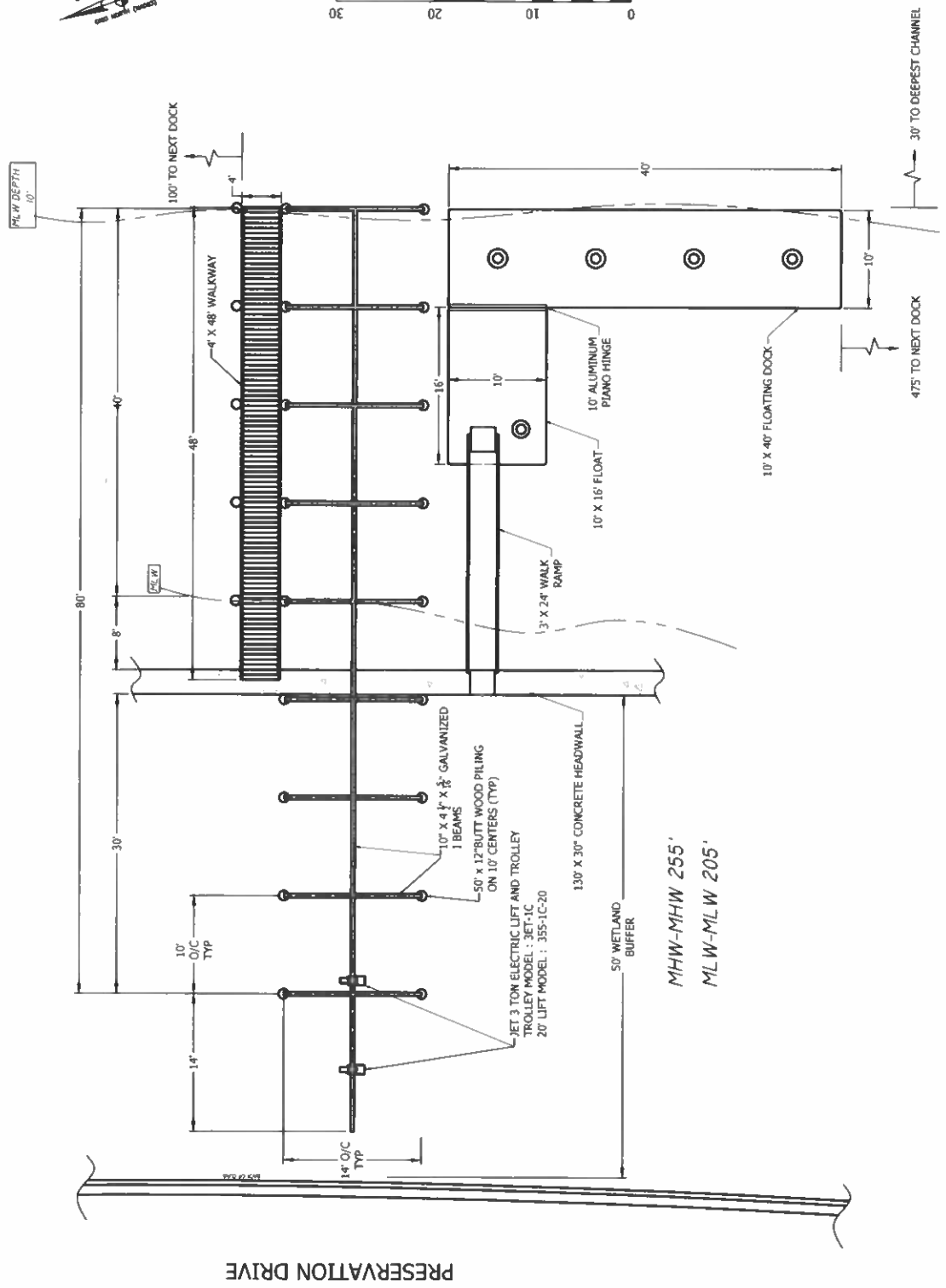
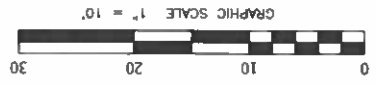
- 50' WETLAND BUFFER
- 50' WETLAND BUFFER
- 50' WETLAND BUFFER
- 50' WETLAND BUFFER
- 50' WETLAND BUFFER

CONTOUR INTERVAL

- 1.00 FEET
- 1.00 FEET
- 1.00 FEET
- 1.00 FEET
- 1.00 FEET

CONTOUR INTERVAL

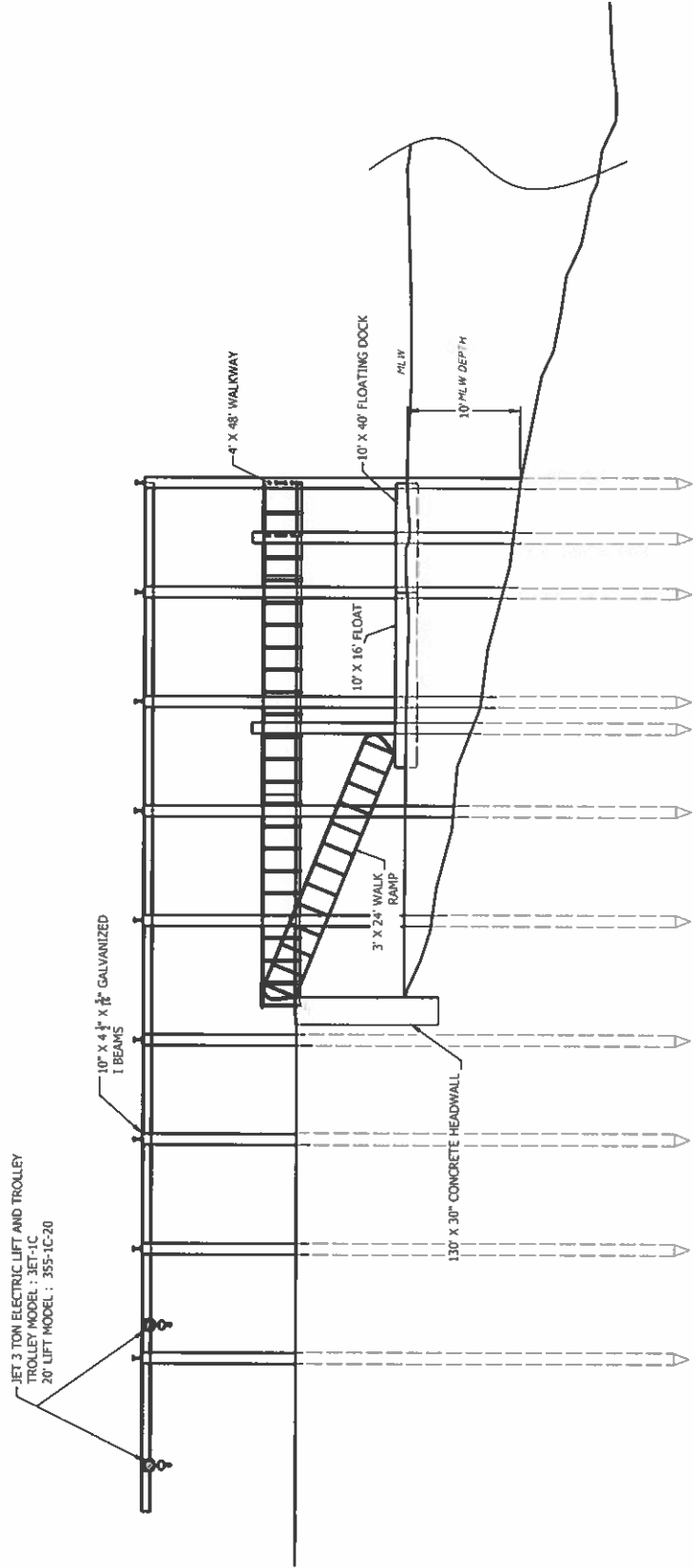
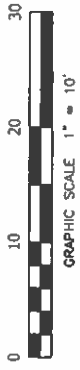
- 1.00 FEET
- 1.00 FEET
- 1.00 FEET
- 1.00 FEET
- 1.00 FEET



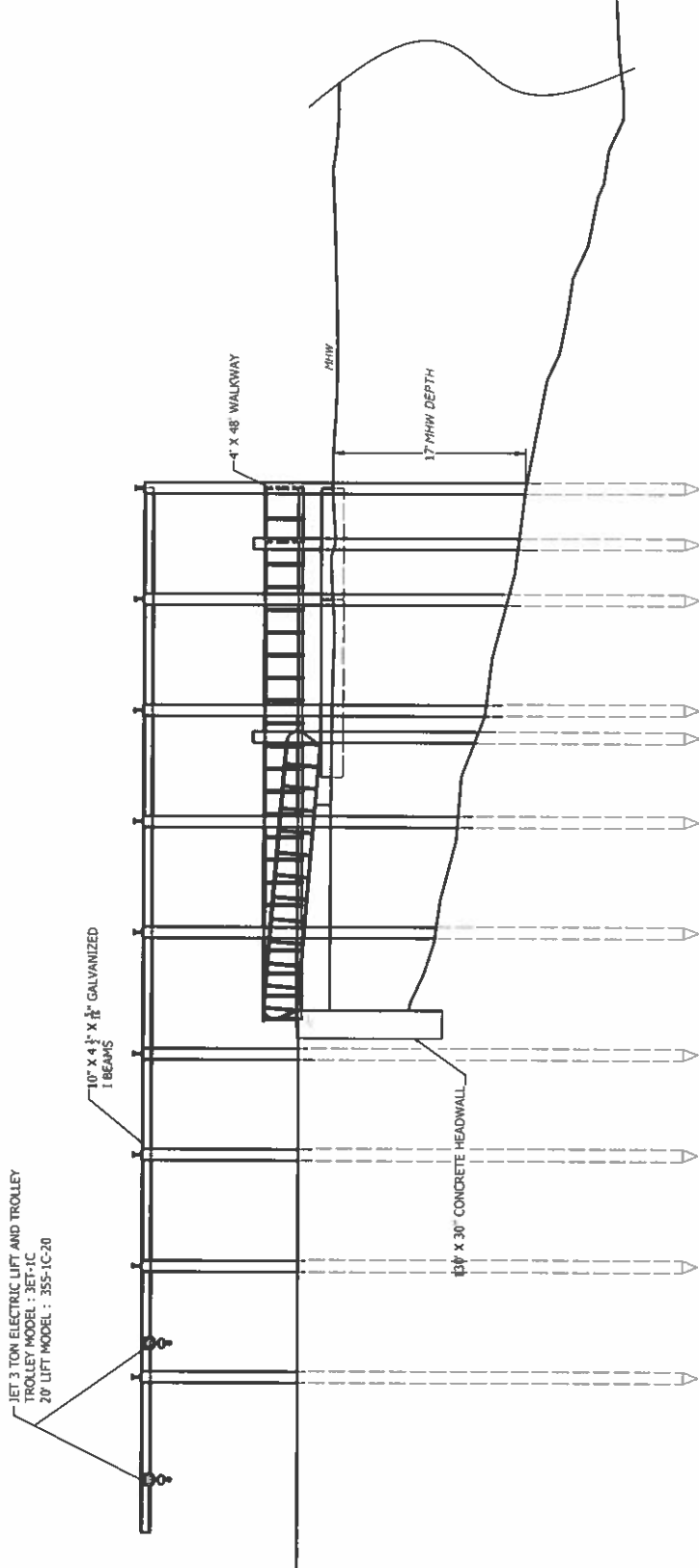
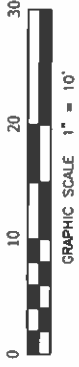
PRESERVATION DRIVE

MHW-MHW 255'
 MLW-MLW 205'

100' TO NEXT DOCK
 475' TO NEXT DOCK
 30' TO DEEPEST CHANNEL



This drawing is not intended for construction, and shall be for permitting purposes only.



This drawing is not intended for construction, and shall be for permitting purposes only.