

GP Savannah
Savannah River Facility



GP Savannah
Savannah River Facility

Property Boundaries (Parcels):151 WAHLSTROM RD

Property Address: 151 WAHLSTROM RD

PRC Link: [Print Property Record Card →](#)

Parcel ID (PIN): 10287 01001

Navigation: [View Directions →](#)

Owner Name: GEORGIA PACIFIC GYPSUM LLC

Estimated Zoning: I-H – Heavy Industrial

Estimated Floodzone: AE, X_500

Calculated Acreage: 33.65

Local Historic District: N/A

Aldermanic District: N/A

County Commission District: 3

Elementary School: Shuman Elementary School

Middle School: Hubert Middle School

High School: School of Liberal Studies

Sale Price: \$6,000,000

Sale Date: 12/30/2006, 7:00 PM

[Zoom to](#)



GP Savannah
Savannah River Facility



GP Savannah
Savannah River Facility



*Permit Application and Supporting Documentation for Georgia-Pacific Gypsum, LLC, Savannah
Plant Outfall Modification*

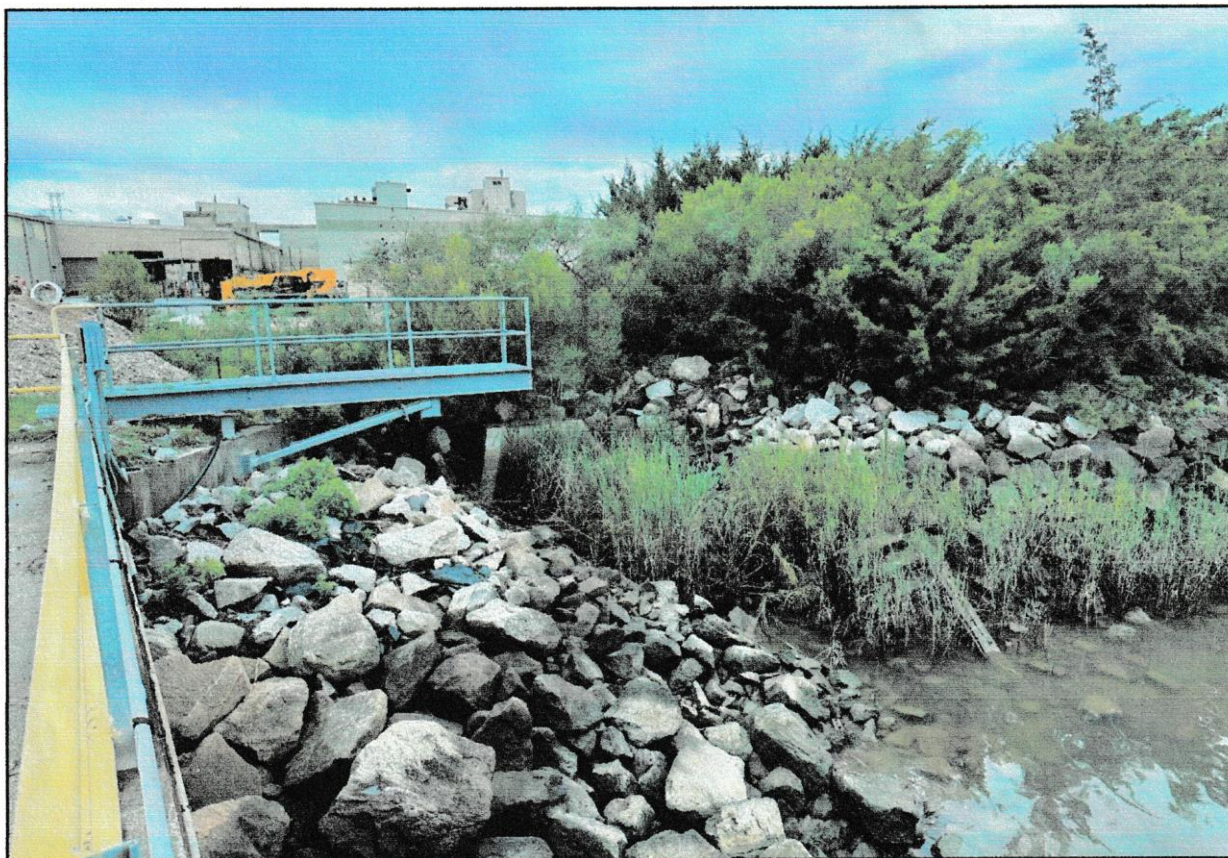


Figure 2-3. Photo showing outfall and catwalk/platform.