

MARK WILLIAMS
COMMISSIONER

DOUG HAYMANS
DIRECTOR

September 17, 2021

Thirsty Camel Productions, Inc.
c/o Laura Bryant
101 Coleman Blvd., Suite E
Savannah, GA 31408

**Re: Letter of Permission (LOP), Movie Production & Related Activities for The Menu,
Temporary Activities in the State's Shore Protection Act Jurisdiction, Driftwood
Beach, Jekyll Island, Glynn County, Georgia.**

Dear Ms. Bryant:

This Letter of Permission (LOP) is in response to your request dated August 18, 2021, to carry out filming activities for The Menu on Driftwood Beach, Jekyll Island, Georgia. The proposed project includes temporary vehicular access to the beach for transport of production equipment and props, site preparation, prop staging and filming within the State's Shore Protection Act (SPA) Jurisdiction. Filming within the State's SPA Jurisdiction will begin no sooner than 15 days from the date of this letter and will be completed no later than October 30, 2021.

Filming and Rain Dates:

Set-up and/or filming will occur over one-day on October 15, 2021. Scenes will be filmed during the daytime and evening hours. Approximate crew and cast call time will be 8:00am and will continue until approximately 9:00pm. These dates are subject to change due to work schedules and weather but will absolutely occur no earlier than 15 days from the date of this letter and be completed by October 30, 2021.

Filming Location:

Filming will occur on the beach seaward of the toe of the dunes, located approximately between GPS Points: 31.10444°N/-81.40461°W & 31.10235°N/-81.40378°W, and consist of approximately 120 cast/crew members, although not all will be present at the shooting location. A detailed location of the film and staging locations can be found in the attached map. To ensure there will be no encroachment into the vegetated sand dunes by equipment or crew, 3ft. wooden stakes will be hammered into the beach area to mark the beach/dune interface.

Beach Access Locations:

Access into the jurisdiction for both people and equipment will be using Jekyll Island's Approved Beach Access Points at:

- 1.) Driftwood Beach/ North Loop Trail Access (people, equipment, and vehicles)
- 2.) Pedestrian Beach Access Trail south of the Driftwood Beach/North Loop Trail
Access (people and hand-carried/rolled equipment)

Equipment in Jurisdiction:

Accessing the filming location using the Driftwood Beach Access and North Loop Trail:

- Lull or Pettibone
- 20ft. x 20ft. “flyswatter” screen for light distribution and evening
- Absorbing mats, mud mats, 4ft. x 8ft. sheets of 3/4in. plywood
- Camera crane
- Four (4) gators and/or golf carts with small trailers attached
- 3’ wooden stakes in the soft and hard sand of the beach
- Daytime lighting equipment
- Grip Equipment
- Cameras and dolly tracks
- Video village – 10ft. x 10ft. tents, directors chairs, and video monitors for production

Boats offshore within less than 1000 feet of Driftwood Beach and entering the water from public boat ramps or private slips:

- Rowboat
- 28’ Custom Built single outboard– registration GA 9054KU – For safety
- Two (2) Jet Skis – For safety
- 27’ Carolina Skiff under Jekyll Dolphin Tours – Camera Boat

To prepare for filming:

- On the date of filming, the existing beach sand in the filming area will be hand raked to remove any footprints. The proposed area to be raked is approximately 75 yards by 110 yards and up to three inches deep. At the completion of filming, Production crew will spread out any sand over a large area to make it consistent with the natural topography and fully restore the beach to its natural state.
- JIA will temporarily remove any signage near or around set that may interfere with filming.
- On the day of filming and per JIA approval, a generator will be placed on the asphalt near the North Loop Trail split as depicted in the Project Description. The generator will always have rubber mats underneath it. Approximately eight (8) cables the size of a garden hose will be placed on the ground and continue through the Pedestrian Beach Access Trail, hugging the side of the access trail for safety. Once on the beach and for the purpose of filming, the cables will be covered up with existing sand.
- Mud mats or 4’x8’ sheets of 3/4in. plywood will be temporarily placed along the approved beach access points.

One scene will take place within SPA jurisdiction. In the scene, the characters will be talking back and forth and can’t believe their surroundings. In the background a short distance from the shore, a person will appear to be fishing from a rowboat.

Public Access:

Public access will temporarily be closed on the beach from the low waterline to the toe of the seaward most dune from the North Loop Trail Access to 300 yards beyond the filming site to the south and 100 yards to the north. Production will post a Production Assistant at each end of the requested closed beach area. When a pedestrian approaches the filming area, a Production Assistant will explain what is happening and ask them to wait to enter the filming area until filming is complete.

General Provisions:

- This LOP does not give permission to hand-trim dead vegetation within the State's SPA jurisdiction.
- At the specified vehicular access point, all production equipment will access the production location across temporary, pre-fabricated mats placed along a travel corridor that is landward of ordinary high water and seaward of the dunes. Mats will help minimize impacts to the ecosystem at the location while allowing for vehicular ingress and egress across the dry sand beach. The travel corridor will enhance public safety, protect the integrity of the dynamic dune field and existing emergent vegetation at each location. Production vehicles will not drive in or enter the sand dune area.
- Gas and diesel production vehicles needing to be refueled during production will be driven off the beach using the approved beach access point and refuel on the asphalt road or parking spot. An absorption mat will be placed on the ground in the parking spot to avoid any fuel spillage onto the ground. All fuel storage containers must remain in the Driftwood Beach Parking Area.
- Production Vehicles are solely for the transportation of production equipment. All crew and talent will access the set via the approved beach access points.
- Cast & crew, vehicles, and/or equipment may not enter the sand dunes area.
- At the end of production, all matting, equipment, and debris will be removed, and the beach will be hand raked in a manner to be consistent with the topography of the immediate surrounding areas.
- Although public access may be temporarily restricted, all efforts shall be made to allow reasonable public access to the beach at and around the filming location.
- Since a portion of the activities will occur during the period of May 1st to October 31st, all areas must be surveyed daily by a person in possession of a DNR Sea Turtle Cooperators Permit prior to commencement of any activities. If a nesting site is located, nests must be marked and avoided. No activity may occur within 20 feet of a nest. Production lights used after dark during nesting season are required to have red light filters that emit wavelengths greater than 560 nanometers. This includes handheld lights, vehicle lights, and production lights.
- Parking of production vehicles in designated parking lots must be coordinated with and approved by the Jekyll Island Authority and may not occur within SPA jurisdictional areas.

The Department acknowledges the filming activities as depicted in the description and has no objection to the action provided best management practices are used, as may be required by Glynn County or the Jekyll Island Authority. Any deviations from the current project description, equipment list, or location footprint may require further review.

The Department will inspect all areas as described above during and at the termination of the temporary activities to ensure that those areas are in a condition consistent with the authorization granted by the LOP. All persons associated with The Menu must remain seaward of the dunes and dune vegetation during setup, filming, and breakdown at the approved location. No thriving vegetation is to be disturbed during approved activities. **No unauthorized equipment, materials or debris may be placed, disposed of, or stored in jurisdictional areas.** Any incidental damage or impacts associated with this project must be rectified by fully restoring areas to their pre-construction topographic and vegetative state as determined by the Department.

This LOP is valid for the above referenced project. Any change in the use, location, type of activities, or date without prior notification and approval from this office could result in the revocation of this Letter of Permission and the requirement to immediately cease all activities followed by removal of materials and related structures. **This project must comply with all other Federal, State, and local statutes, ordinances, and regulations.**

If you have any further questions or concerns, please contact Beth Byrnes at (912) 266-0277.

Sincerely,



Jill Andrews
Chief, Coastal Management Section

Enclosed: Attachment A Detailed Project Description and Map
Marine Event Permit

File: LOP20210115

Cc: Laura Bryant
237 Andrews Road
Savannah, GA 31410

THE MENU

August 18, 2021

Ms. Deb Barreiro
Georgia Department of Natural Resources
1 Conservative Way
Brunswick, GA 31520

RE: Letter of request, 'The Menu', THIRSTY CAMEL PRODUCTIONS, LLC., filming near the state's shore jurisdiction near Driftwood Beach, Jekyll Island, Georgia.

Dear Ms. Barreiro,

'The Menu' is a fictitious story set in the Puget Sound. Production has based this film in the Savannah and Jekyll areas.

Thirsty Camel Productions, Inc., is requesting permission to film in and around the state's shore jurisdiction on Jekyll Island, Georgia. This filming request is for one day, tentatively scheduled for Wednesday, October 20, 2021. We are proposing one filming location and one beach access location with the following activities at this location:

Key location – DAY/EVENING - The following day activities are proposed for the scene referred to as **'Our hostess leads group through the beautiful beach trees' and 'the group waves to a guy in a row boat'**. The characters will be talking back and forth with 'Elsa', and they can't believe their surroundings. In the background, in the short distance from shore, there is an **'older gentleman in a rowboat fishing'**. This character will not actually be fishing. He may have a fishing pole in the water but there will be no bait on the line. Production will film this from the POV from shore looking at the fisherman. Production will have a small safety boat in the water while our 'fisherman' is in his boat.

This scene takes place on the beach at the Driftwood Beach area at medium to low tide. Walking crew and equipment will enter the beach by using the Public sand cut through Access area. Requesting permission for this access to the beach entrance to be closed to the public during filming.

There will be no construction on this film site, just walking and talking with talent.

Access Points – For any of production's vehicular needs, Production is requesting permission to access the sand access point with four ATVs with carts for filming day. Crew will access the beach on foot by using the same pedestrian sand access.

While filming, Company is seeking permission to have our generator on the east side of the road. This generator will have a rubber mat underneath it at all times. Cable, the size of a garden hose, and approximately eight, will be placed on the ground and continue through the Pedestrian Access area, hugging the side of the access trail. With safety in mind the cables will be out of the way of pedestrians and harms' way. Once on the beach the cables will be on the beach and possibly covered up with the existing sand. Once filming is complete all cables will be removed. Any disturbed sand will be raked back to its natural state.

For filming purposes, AND, if the beach area can accommodate our request, Company is seeking permission to drive a 'Lull' or Pettibone onto the beach using the Jekyll's North Loop Trail Access Road. Once in place near the filming area, Company will build a 'flyswatter' that is a 20x20 screen to create an even light effect that attaches to the Lull. Company will place an absorbing mat under the Lull/Pettibone to ensure no fuel or oil will spill onto the sand. If, while on the beach and the Lull needs fuel, Company will drive Lull back to the asphalt pavement and fuel the Lull on the asphalt road, in a parking spot. An absorption mat will be placed on the ground in the parking spot to avoid any fuel spillage onto the ground. The Lull will enter the beach using the North Loop Trail Access Road. Once Company hits any soft or packed sand the Lull will have mud mats or 4x8 sheets of ¾ plywood (see attached photo) placed under the wheels. This Lull will not be able to maneuver thru ought the felled trees. The Lull will be in an area that can accommodate this equipment.

Company is seeking permission to access the beach starting at 8am on the filming day with the Lull. The flyswatter will be assembled on the beach, then lifted into the air and kept in place until filming is complete. Once filming is complete, the flyswatter will be dismantled and the Lull will leave the same way it entered.

Company is seeking permission to have a camera crane on the beach at our film area. Permission to access the North Loop Trail Access Road. Camera crane will be in the back of a gator or on fat wheels that can roll over sand. This equipment will enter the beach using the North Loop Trail Access Road.

In order for Company to work in a safe environment, Production is requesting permission to temporarily close off our proposed filming area. Company is seeking permission to use 3' wooden stakes in the soft or hard sand. These stakes will be hammered into the beach area

with a sledge hammer and the stakes will be removed once filming is complete. These wooden stake markers will be used to keep all crew and equipment from any dune activity.

Once breakdown is complete, all equipment will be removed from the beach using the North Loop Trail Access Road.

In our proposed filming area there is no vegetation at this particular area and crew will not walk into or place any equipment in the grass dune area.

The Company is requesting permission to have a total of four 4-wheeled gators (and or golf carts) with small trailers attached for the purpose of hauling production equipment and or talent. The gators will be driven by Teamsters and not individual crew members and the Teamsters will obey all guidelines. For all of the production work taking place on the beach at this location, production equipment consists of day time lighting equipment, grip equipment, set dressing, a camera and dolly track. The gators will be used by camera department for their camera equipment only, electric for their heavy cables and working day lights, the grip department with pipes and drapes and for props. The Vehicles will not drive in or enter any sand dune area. The gators efficiently move equipment on and off the beach and are needed due to the size and weight of most of our equipment needs.

While on the beach seaward of the high-water mark, permission to hand rake and/or hand broom the existing sand to remove any footprints from crew and talent. Proposed area to be raked is approximately 110 yards x 75 yards and three inches deep. At the completion of this scene, Production crew will spread out any sand over a large area to make it consistent with the natural topography and fully restore the area to its natural state. Within this work area, the Company is asking permission to have the Jekyll Island Authority to temporarily remove any signage near or around our proposed set.

All equipment needed for filming will access the beach by using the existing North Loop Trail Access Road.

Our tentative shoot days while on Jekyll are between September 15th and October 30th, 2021. Weather and actor permitting, the current proposed film day is Wednesday, October 20 2021. We will be filming this scene during daylight and sunlight hours with approximate crew call time of 10:00am and will continue until approximately 8pm. A prep crew would start at approximately 8:00am on film day.

All production vehicles will be parked in designated parking lots. Production is seeking permission to park our approximately three to four Production's Working Trucks on Beach View Drive in the designated parking areas of the Driftwood Beach Parking spots. All of the crew and talent will be parked in designated, paved parking area on Jekyll Island. Basecamp Trucks and equipment will be parked in a designated paved parking area close to our set.

Our gators/ATVs/golf carts will load up from North Loop Trail and then head to the beach.

If weather is an issue during our proposed filming dates, our schedule could change but is projected to occur between September 15 and October 30, 2021

For our filming location, Company is asking permission to temporarily close the beach and to control the beach to all pedestrians / public access from the low waterline to the soft sand from the North Loop Trail Access Road to 300 yards beyond our filming site to the south and 100 yards to the north. Production will post a Production Assistant at each end of this requested closed beach area. The Production Assistant, when pedestrian approaches our filming area, will explain to pedestrian(s) what is going on and if they could wait to enter our filming area when our filming is complete.

Company is also seeking permission to set up Company's Video Village while filming on the beach under several 10x10 portable tents. Company is fully aware of no trespassing or having any equipment in or on the dunes. The video village consists of our producers, director, script supervisor, and assistant director. There will be a tall wooden director's chair for each person. Video monitors will be set up that allows these crew members to watch what is actually being filmed. These tents will go up day of and will be removed at end of filming. No filming equipment will be left on the beach after filming, everything will be removed.

Sincerely,

Laura Bryant

Laura Bryant

Location Manager, *The Menu*

THIRSTY CAMEL PRODUCTIONS, INC

101 Coleman Blvd., Suite E

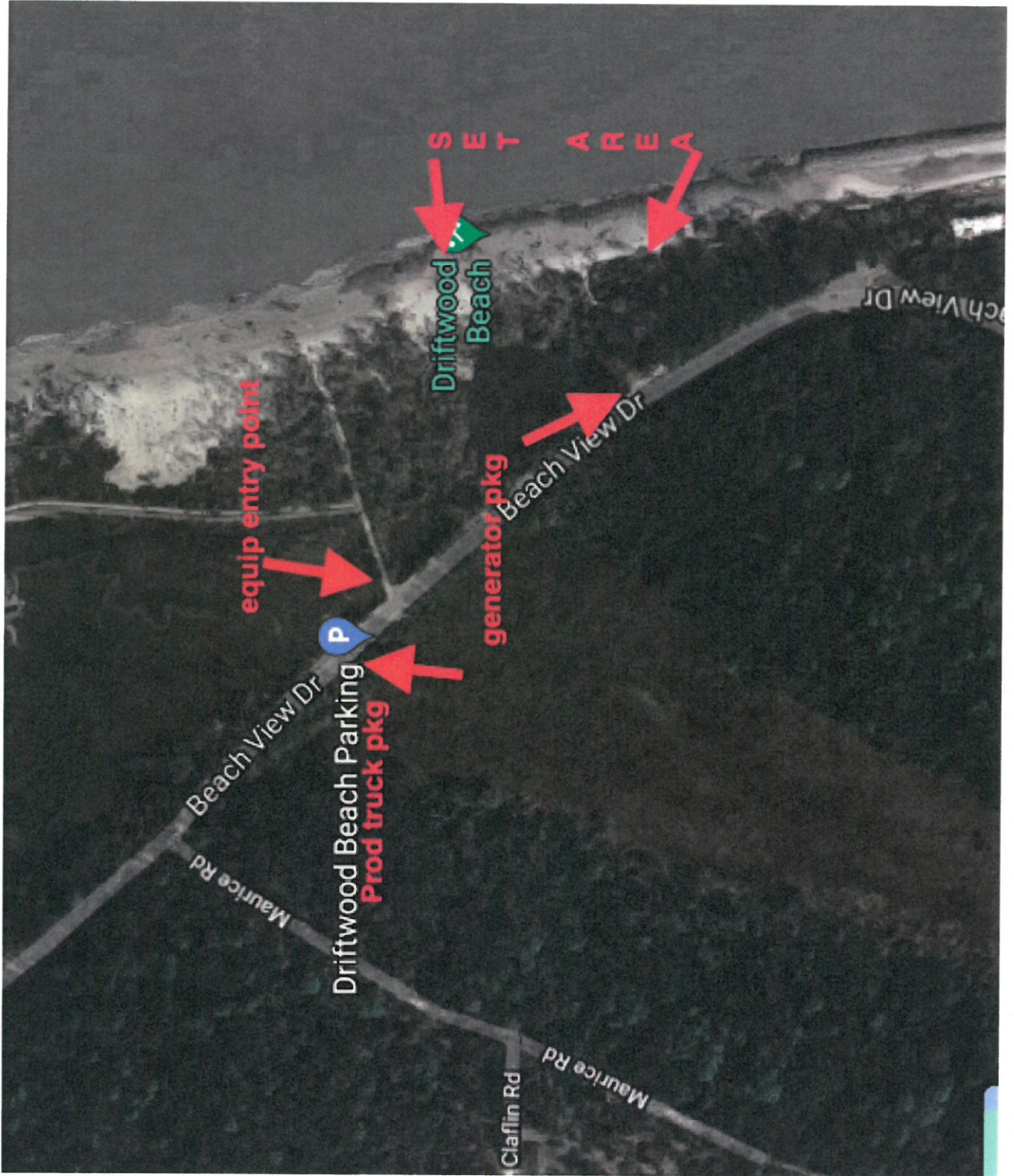
Savannah, GA 31408

Personal Address:

237 Andrews Road

Savannah, GA 31410

912-667-4192 cell



SET AREA

Driftwood Beach

equip entry point

generator pkg

Driftwood Beach Parking

Prod truck pkg

Beach View Dr

Maurice Rd

Beach View Dr

Claflin Rd
Maurice Rd

Lull PERFORMANCE information:

- **Rated Capacity:** 10,000 lb (4,536 kg)
- **Maximum Lift Height:** 54 ft (16.5 m)
- **Frame Leveling:** 10 degrees
- **Lift Speed (boom retracted, no load):**
Up: 15.6 sec
Down: 14.6 sec
- **Boom Speed (no load) Extend:** 15.2 sec / Retract: 11.3 sec
- **Travel Speed Forward:** 22 mph (35 kmph) max.
- **Drawbar Pull (loaded):** 21,700 lb (9,843 kg)
- **Operating Weight Without Carriage and Forks:**
31,350 lb (14,220 kg)
- **Forward Reach:** 45 ft (13.7 m)
- **Horizontal Load Placement:** 80 in. (2.0 m)

STANDARD SPECIFICATIONS

- **Transmission:**
Modulated powershift.
4-speed forward and 3-speed reverse.
- **Axles:**
Full-time planetary 4-wheel drive.
Oscillating rear axle with stabil-TRAK™ system.
- **Service Brakes:**
Hydraulically actuated inboard wet disc brakes.
- **Parking Brakes:**
Spring applied hydraulic release brake with
transmission declutch feature.
- **Tires:**
Standard: Hydro fill 14.00 x 24 – 12 ply



OLARIS



102

V

