

PROJECT NO:	18-0143
DRAWN BY:	TCB
DESIGNED BY:	TCB
SURVEYED BY:	YAWN
SURVEY DATE:	JAN. 2019
CHECKED BY:	JMM
SCALE:	1" = 1000'
DATE:	MARCH 13, 2020

PROJECT LOCATION MAP

SAVANNAH BOATHOUSE DEVELOPMENT

8020 E. US HWY 80
 CHATHAM COUNTY, GEORGIA

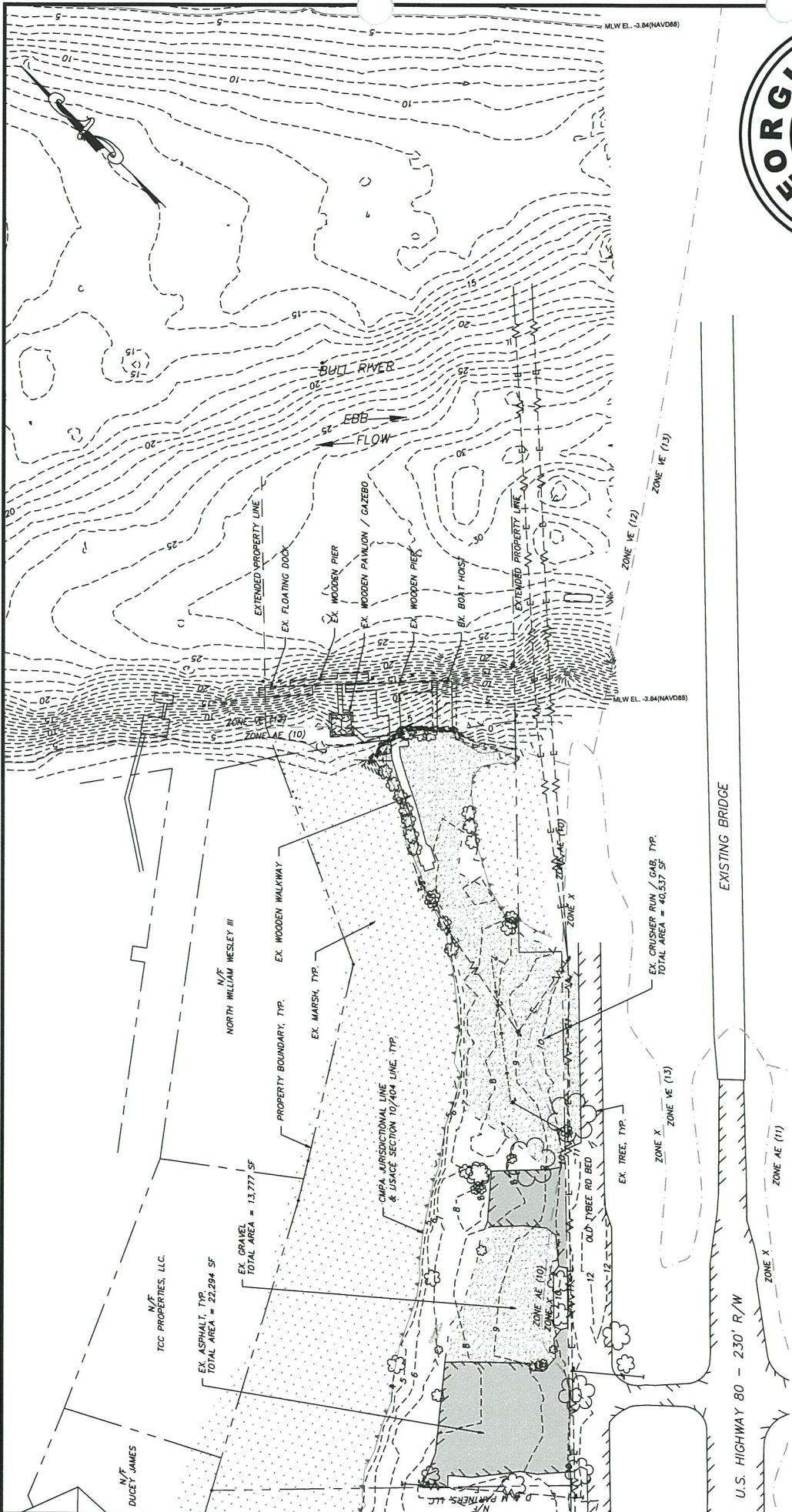
Prepared for:
3 SEA SONS, LLC.

SHEET 1

EMC ENGINEERING SERVICES, INC.
 10 Chatham Center South,
 Site 100
 Savannah, GA 31405
 Ph: (912) 232-6533
 Fax: (912) 233-4580
 savannah@emc-eng.com
 www.emc-eng.com

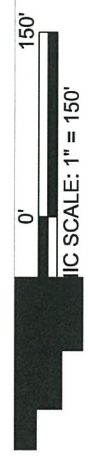
CIVIL MARINE ENVIRONMENTAL

ALBANY, ATLANTA, AUGUSTA, BRUNSWICK,
 COLUMBUS, STATESBORO & VALDOSTA



TOPOGRAPHIC INFORMATION TAKEN FROM SURVEY COMPLETED BY YAWN LAND SURVEYS, LLC AND A BATHYMETRIC SURVEY COMPLETED BY BOTTOM LINE ECHO COMPANY IN JANUARY 2019. HORIZONTAL DATUM IS BASED ON GEORGIA STATE PLAN NAD 83. ALL ELEVATIONS SHOWN ARE BASED ON NAVD88 DATUM.

PROJECT AREA = 4.91 ACRES
 UPLAND AREA = 2.38 ACRES
 MARSHLAND AREA = 2.53 ACRES

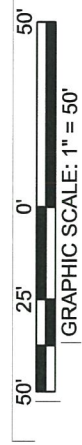
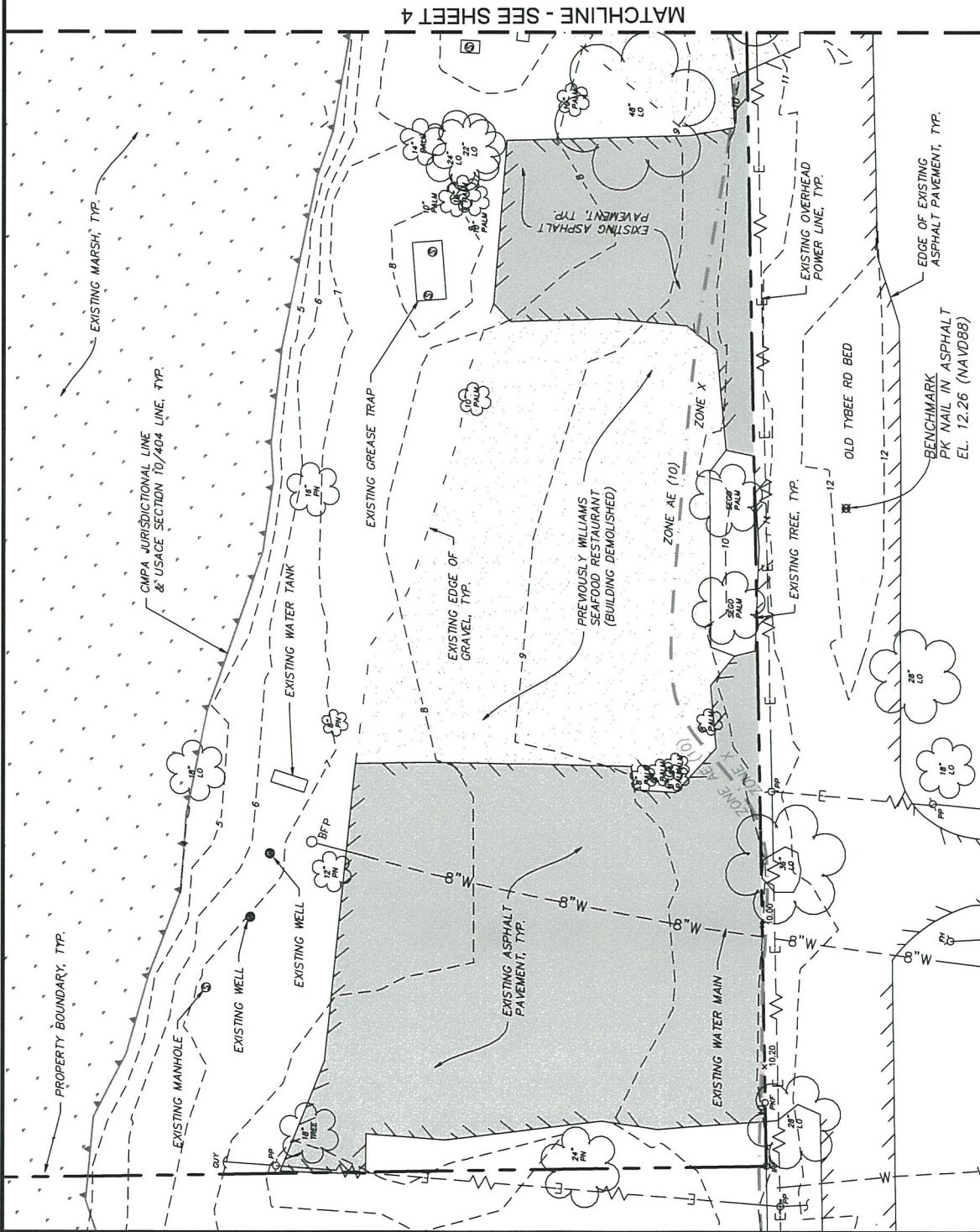


SHEET 2

EMC ENGINEERING SERVICES, INC.
 10 Chatham Center South,
 Ste 100
 Savannah, GA 31405
 Ph: (912) 232-6533
 Fax: (912) 233-4580
 savannah@emc-eng.com
 www.emc-eng.com
 CIVIL
 MARINE
 ENVIRONMENTAL
 ALBANY, ATLANTA, AUGUSTA, BRUNSWICK,
 COLUMBUS, STATESBORO & VALDOSTA

OVERALL EXISTING CONDITIONS
SAVANNAH BOATHOUSE DEVELOPMENT
 8020 E. US HWY 80
 CHATHAM COUNTY, GEORGIA
 Prepared for:
3 SEA SONS, LLC.

PROJECT NO:	18-0143
DRAWN BY:	TCB
DESIGNED BY:	TCB
SURVEYED BY:	YAWN
SURVEY DATE:	JAN. 2019
CHECKED BY:	JMM
SCALE:	1" = 150'
DATE:	MARCH 13, 2020



PROJECT NO:	18-0143
DRAWN BY:	TCB
DESIGNED BY:	TCB
SURVEYED BY:	YAWN
SURVEY DATE:	JAN. 2019
CHECKED BY:	JMM
SCALE:	1" = 50'
DATE:	MARCH 13, 2020

OVERALL EXISTING CONDITIONS

SAVANNAH BOATHOUSE DEVELOPMENT

8020 E. US HWY 80

CHATHAM COUNTY, GEORGIA

Prepared for:

3 SEA SONS, LLC.

SHEET 3

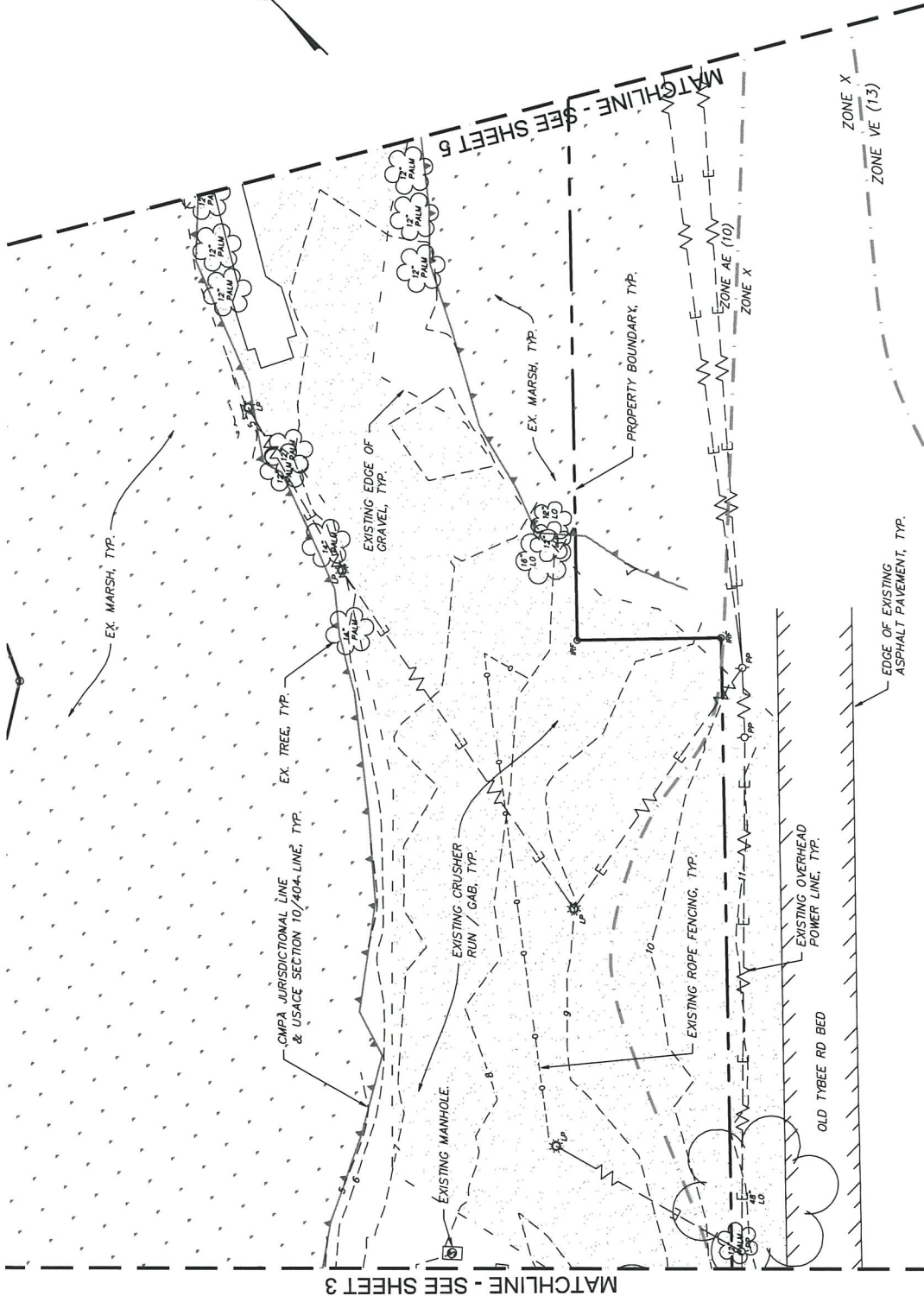
EMC ENGINEERING SERVICES, INC.
 10 Chatham Center South,
 Ste 100
 Savannah, GA 31405
 Ph: (912) 232-6533
 Fax: (912) 233-4580
 savannah@emc-eng.com
 www.emc-eng.com

EMC
 CIVIL
 MARINE
 ENVIRONMENTAL

ALBANY, ATLANTA, AUGUSTA, BRUNSWICK,
 COLUMBUS, STATESBORO & VALDOSTA



PROJECT NO:	18-0143
DRAWN BY:	TCB
DESIGNED BY:	TCB
SURVEYED BY:	YAWN
SURVEY DATE:	JAN. 2019
CHECKED BY:	JMM
SCALE:	1" = 50'
DATE:	MARCH 13, 2020



SHEET 4

EMC ENGINEERING SERVICES, INC.
 10 Chatham Center South,
 Ste 100
 Savannah, GA 31405
 Ph: (912) 232-6533
 Fax: (912) 233-4580
 savannah@emc-eng.com
 www.emc-eng.com

CIVIL MARINE ENVIRONMENTAL

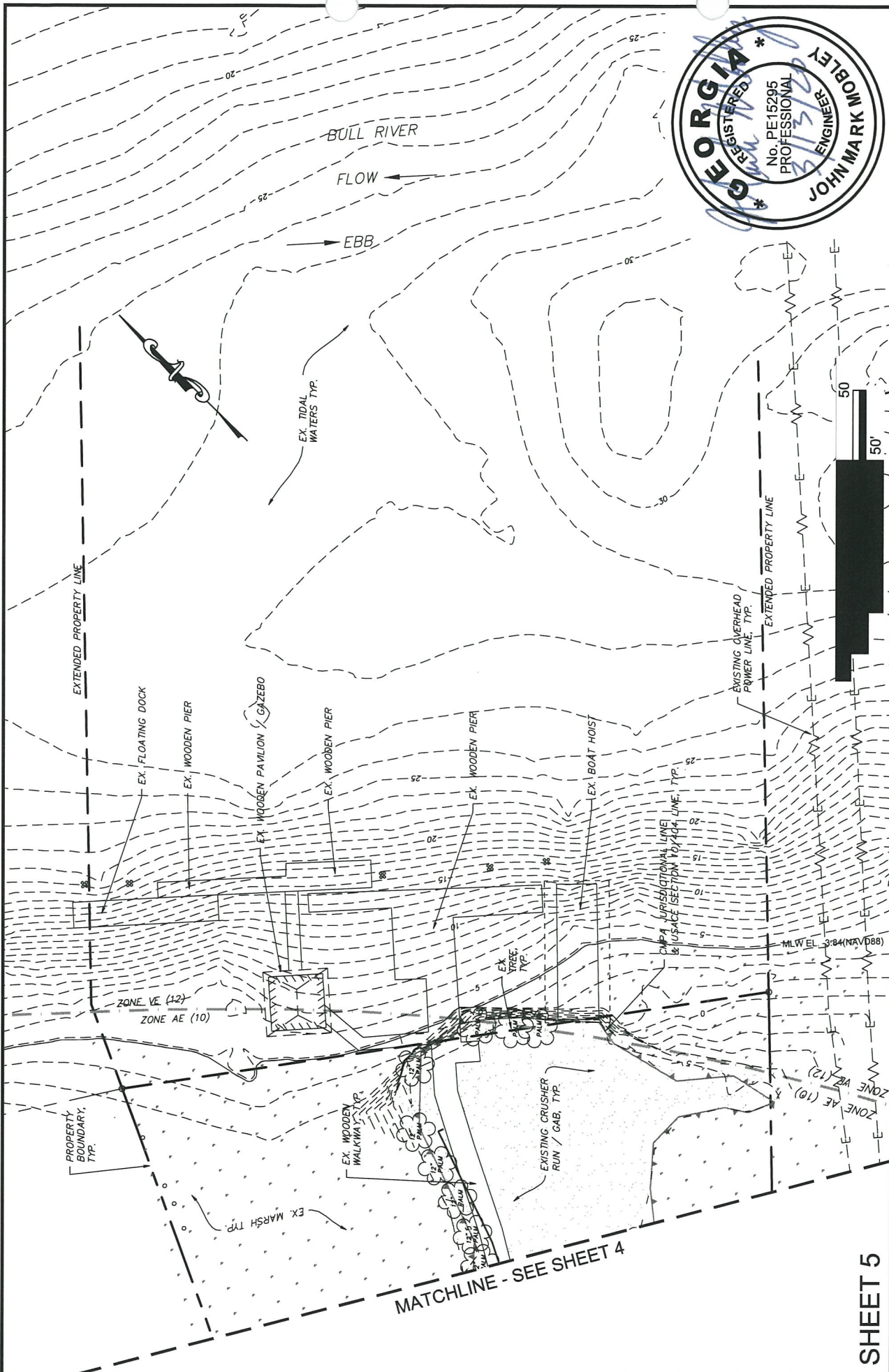
ALBANY, ATLANTA, AUGUSTA, BRUNSWICK,
 COLUMBUS, STATESBORO & VALDOSTA

OVERALL EXISTING CONDITIONS

SAVANNAH BOATHOUSE DEVELOPMENT

8020 E. US HWY 80
 CHATHAM COUNTY, GEORGIA

Prepared for:
 3 SEA SONS, LLC.



PROJECT NO:	18-0143
DRAWN BY:	TCB
DESIGNED BY:	TCB
SURVEYED BY:	YAWN
SURVEY DATE:	JAN. 2019
CHECKED BY:	JMM
SCALE:	1" = 50'
DATE:	MARCH 13, 2020

OVERALL EXISTING CONDITIONS

SAVANNAH BOATHOUSE DEVELOPMENT

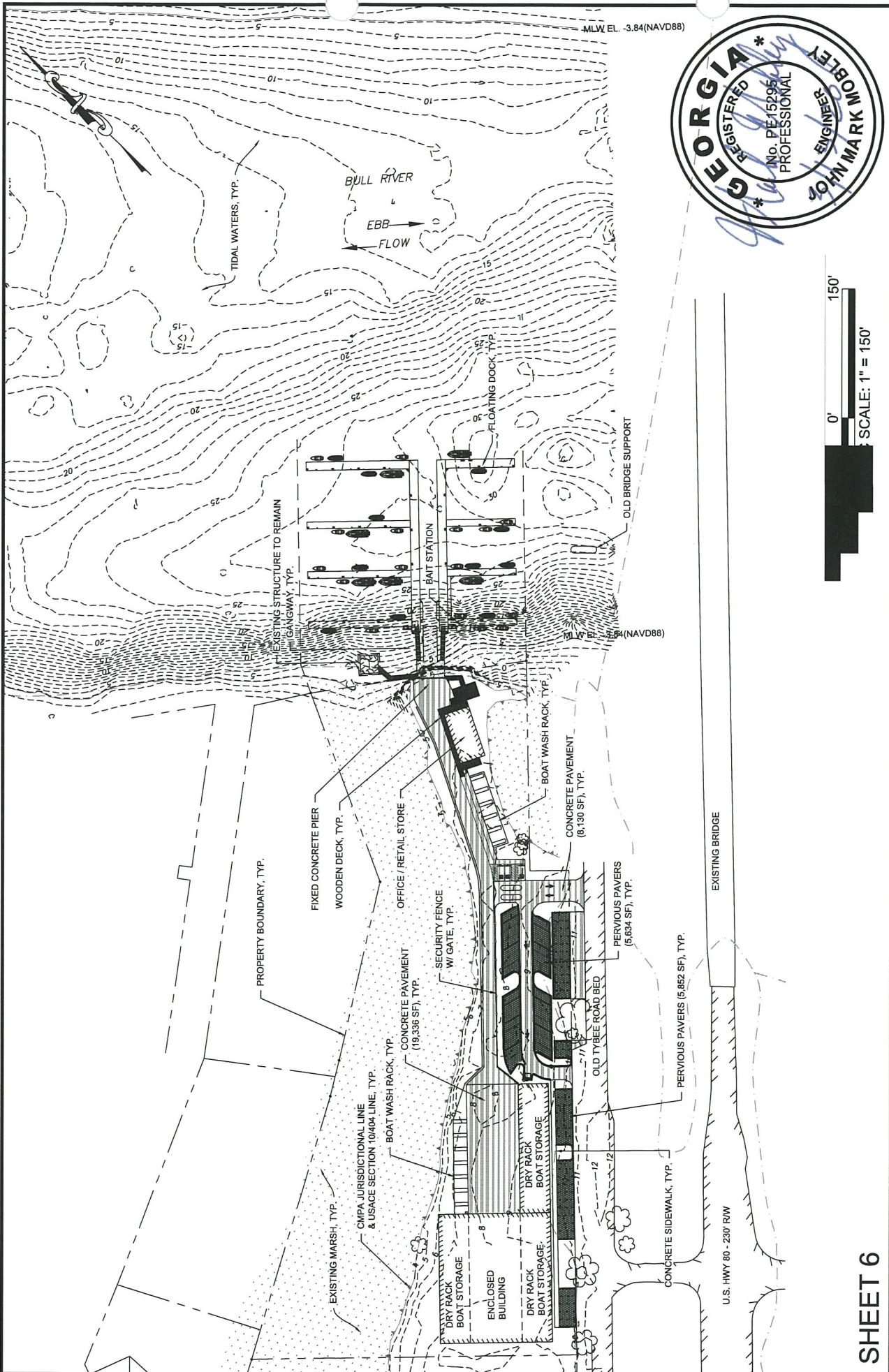
8020 E. US HWY 80
 CHATHAM COUNTY, GEORGIA

Prepared for:
3 SEA SONS, LLC.

SHEET 5

EMC ENGINEERING SERVICES, INC.
 10 Chatham Center South,
 Savannah, GA 31405
 Ph: (912) 232-6533
 Fax: (912) 233-4580
 savannah@emc-eng.com
 www.emc-eng.com

**ALBANY, ATLANTA, AUGUSTA, BRUNSWICK,
 COLUMBUS, STATESBORO & VALDOSTA**



0' 150'
SCALE: 1" = 150'

PROJECT NO:	18-0143
DRAWN BY:	TCB
DESIGNED BY:	TCB
SURVEYED BY:	YAWN
SURVEY DATE:	JAN. 2019
CHECKED BY:	JMM
SCALE:	1" = 150'
DATE:	MARCH 13, 2020

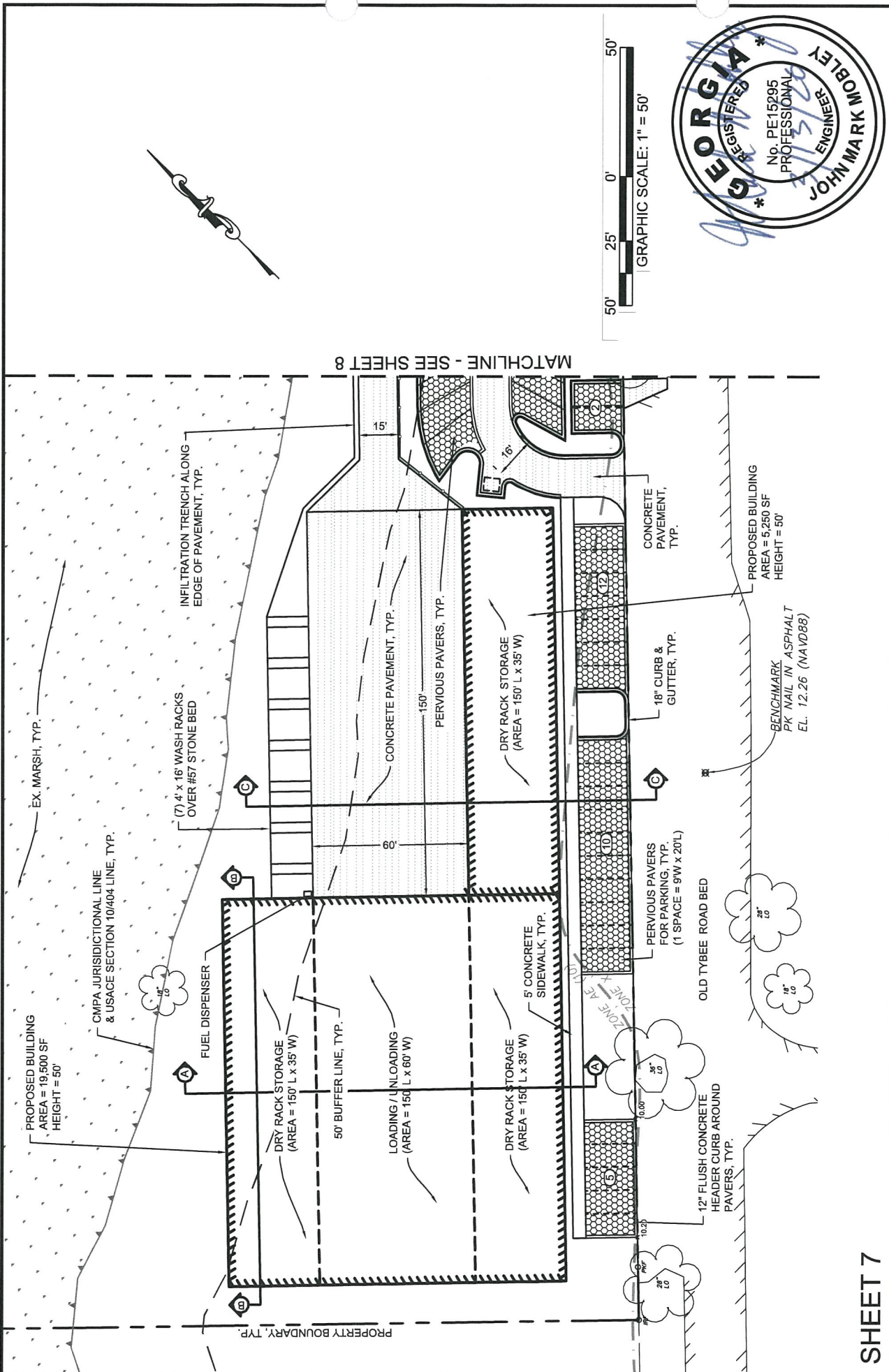
OVERALL PROPOSED IMPROVEMENTS
SAVANNAH BOATHOUSE DEVELOPMENT
 8020 E. US HWY 80
 CHATHAM COUNTY, GEORGIA
 Prepared for:
 3 SEA SONS, LLC.

SHEET 6

EMC ENGINEERING SERVICES, INC.
 10 Chatham Center South,
 Ste 100
 Savannah, GA 31405
 Ph: (912) 232-6533
 Fax: (912) 233-4580
 savannah@emc-eng.com
 www.emc-eng.com

EMC
 CIVIL
 MARINE
 ENVIRONMENTAL

ALBANY, ATLANTA, AUGUSTA, BRUNSWICK,
 COLUMBUS, STATESBORO & VALDOSTA



PROJECT NO:	18-0143
DRAWN BY:	TCB
DESIGNED BY:	TCB
SURVEYED BY:	YAWN
SURVEY DATE:	JAN. 2019
CHECKED BY:	JMM
SCALE:	1" = 50'
DATE:	MARCH 13, 2020

PROPOSED IMPROVEMENTS

SAVANNAH BOATHOUSE DEVELOPMENT

8020 E. US HWY 80
CHATHAM COUNTY, GEORGIA

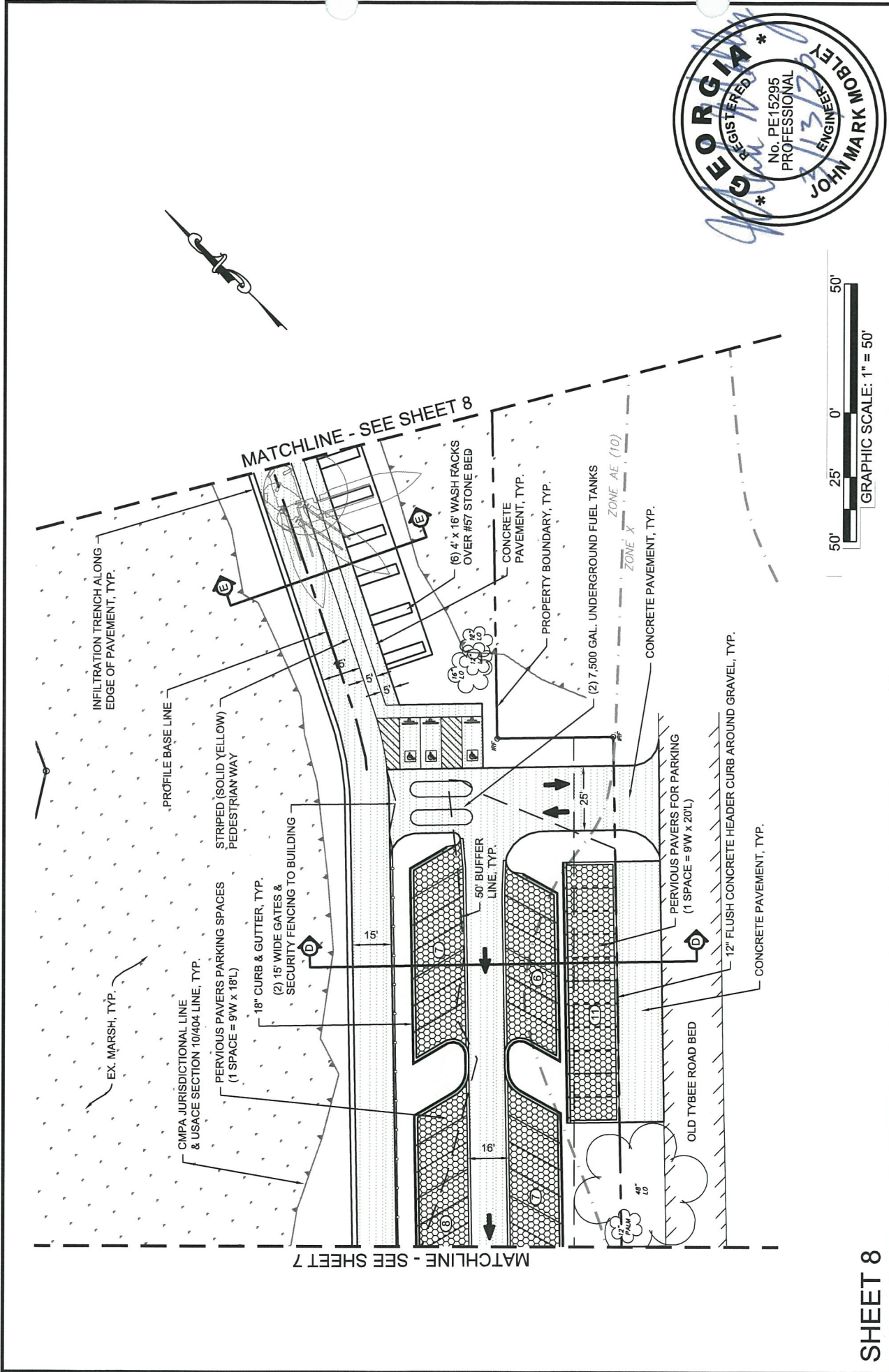
Prepared for:
3 SEA SONS, LLC.

SHEET 7

EMC ENGINEERING SERVICES, INC.
10 Chatham Center South,
Ste 100
Savannah, GA 31405
Ph: (912) 232-6533
Fax: (912) 233-4580
savannah@emc-eng.com
www.emc-eng.com

EMC
CIVIL
MARINE
ENVIRONMENTAL

ALBANY, ATLANTA, AUGUSTA, BRUNSWICK,
COLUMBUS, STATESBORO & VALDOSTA



PROJECT NO:	18-0143
DRAWN BY:	TCB
DESIGNED BY:	TCB
SURVEYED BY:	YAWN
SURVEY DATE:	JAN. 2019
CHECKED BY:	JMM
SCALE:	1" = 50'
DATE:	MARCH 13, 2020

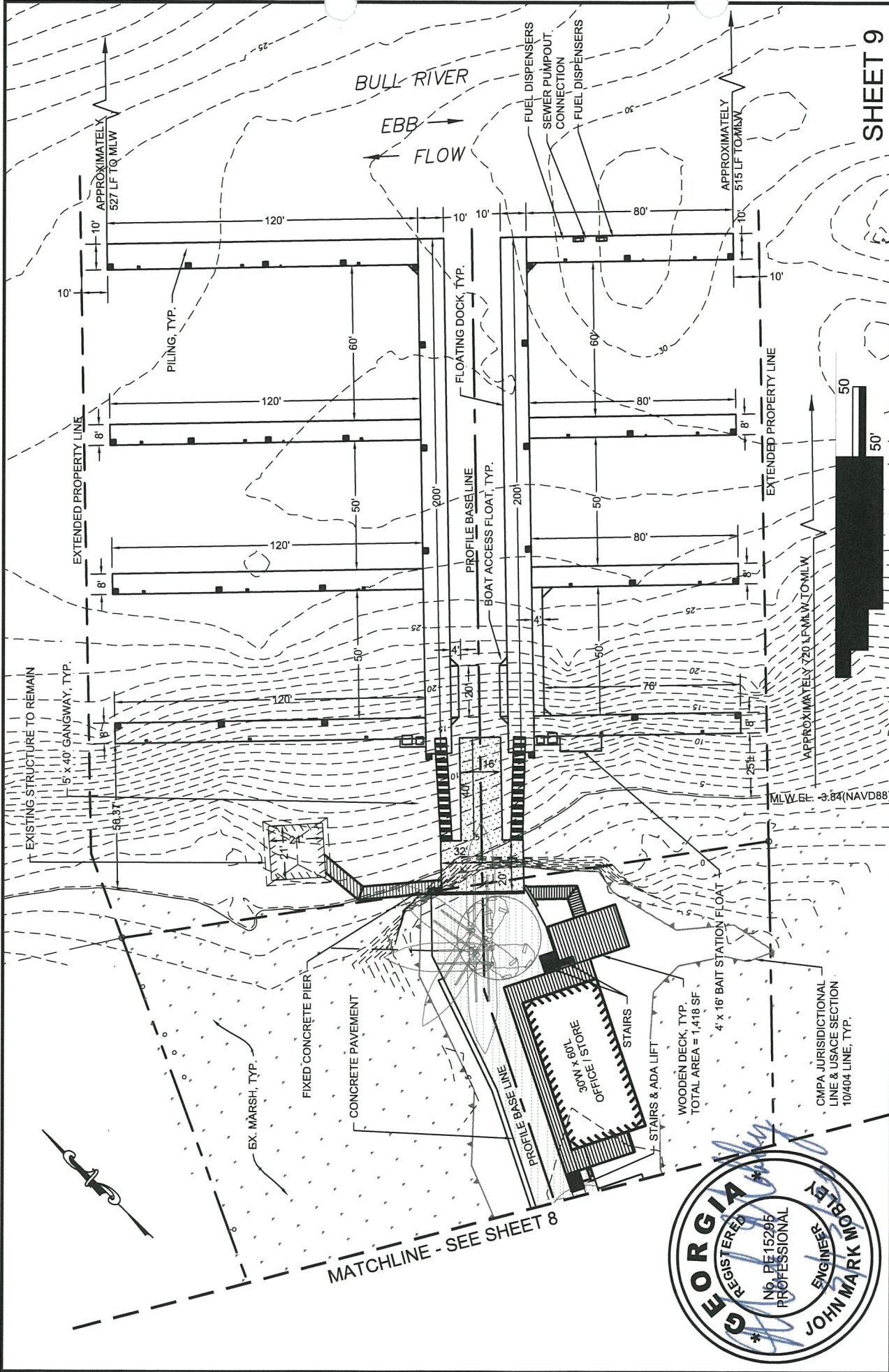
PROPOSED IMPROVEMENTS
SAVANNAH BOATHOUSE DEVELOPMENT
 8020 E. US HWY 80
 CHATHAM COUNTY, GEORGIA
 Prepared for:
3 SEA SONS, LLC.

SHEET 8

EMC ENGINEERING SERVICES, INC.
 10 Chatham Center South,
 Ste 100
 Savannah, GA 31405
 Ph: (912) 232-6533
 Fax: (912) 233-4580
 savannah@emc-eng.com
 www.emc-eng.com

ENVIRONMENTAL
 MARINE
 CIVIL

ALBANY, ATLANTA, AUGUSTA, BRUNSWICK,
 COLUMBUS, STATESBORO & VALDOSTA



SHEET 9

PROJECT NO:	18-0143
DRAWN BY:	TCB
DESIGNED BY:	TCB
SURVEYED BY:	YAWN
SURVEY DATE:	JAN. 2019
CHECKED BY:	JMM
SCALE:	1" = 50'
DATE:	MARCH 13, 2020

MARSHLAND COMPONENT PROPOSED IMPROVEMENTS

SAVANNAH BOATHOUSE DEVELOPMENT

8020 E. US HWY 80
 CHATHAM COUNTY, GEORGIA
 Prepared for:
 3 SEA SONS, LLC.

EMC ENGINEERING SERVICES, INC.
 10 Chatham Center South,
 Ste 100
 Savannah, GA 31405
 Ph: (912) 232-6533
 Fax: (912) 233-4580
 savannah@emc-eng.com
 www.emc-eng.com

emc
 CIVIL
 MARINE
 ENVIRONMENTAL

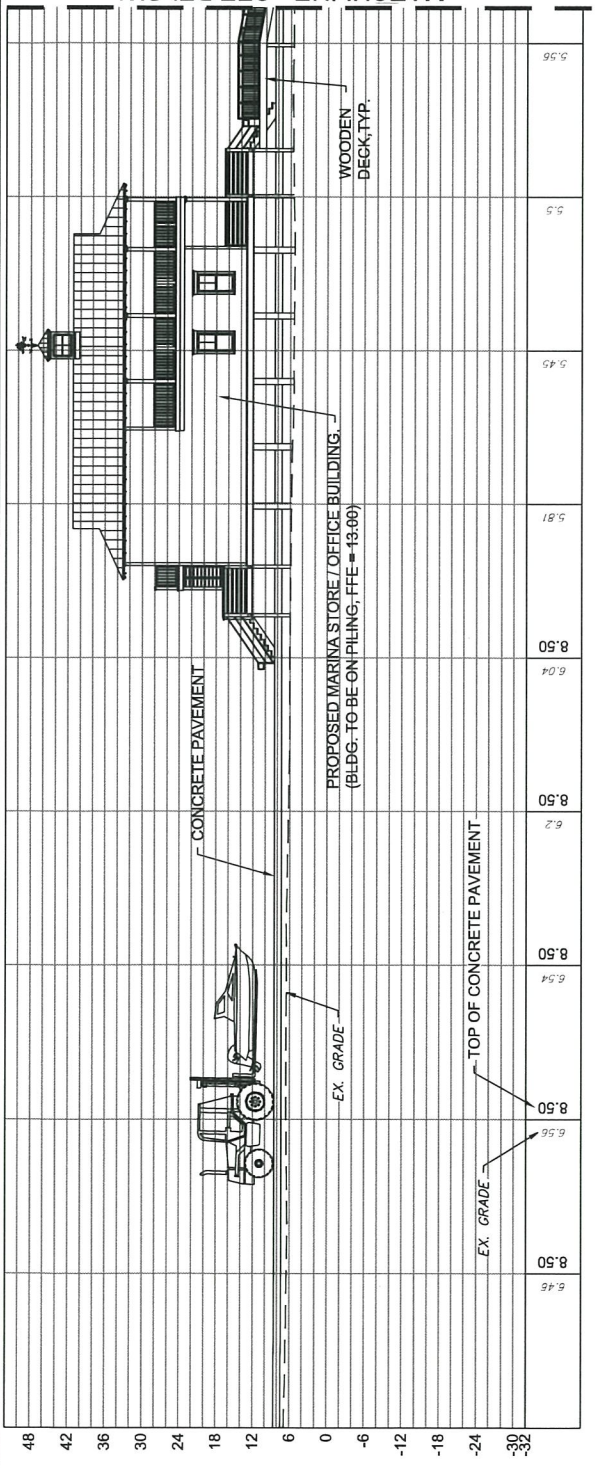
ALBANY, ATLANTA, AUGUSTA, BRUNSWICK,
 COLUMBUS, STATESBORO & VALDOSTA



MATCHLINE - SEE SHEET 8



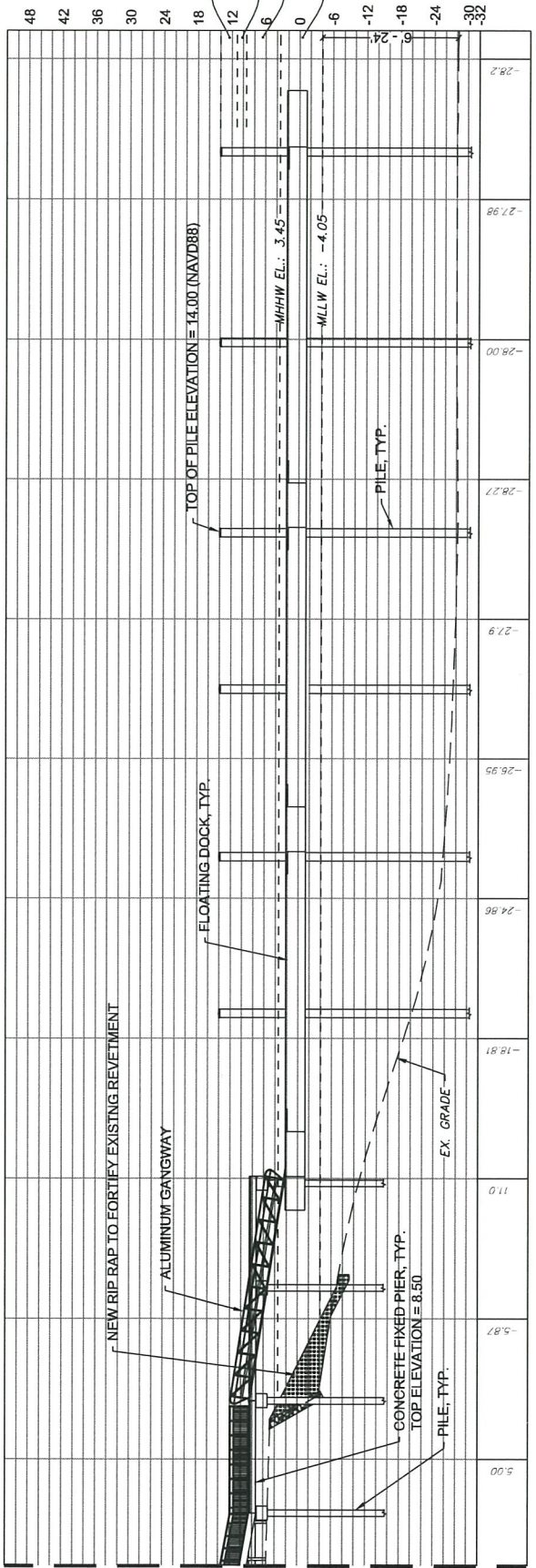
MATCHLINE - SEE BELOW



1+00

2+00

MATCHLINE - SEE ABOVE



5+00

4+00

3+00

SHEET 10

EMC ENGINEERING SERVICES, INC.
 10 Chatham Center South,
 Site 100
 Savannah, GA 31405
 Ph: (912) 232-6533
 Fax: (912) 233-4580
 savannah@emc-eng.com
 www.emc-eng.com

ALBANY, ATLANTA, AUGUSTA, BRUNSWICK,
 COLUMBUS, STATESBORO & VALDOSTA

FORKLIFT PATH, FIXED PIER, & FLOATING DOCK PROFILE

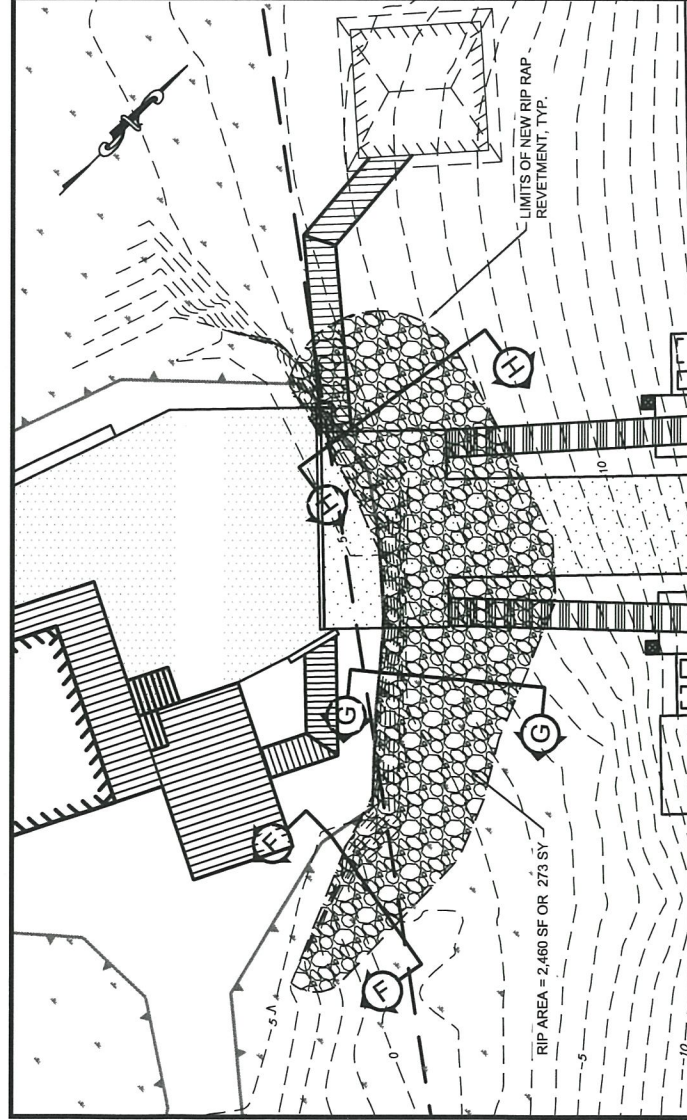
SAVANNAH BOATHOUSE DEVELOPMENT

8020 E. US HWY 80
 CHATHAM COUNTY, GEORGIA
 Prepared for:
 3 SEA SONS, LLC.

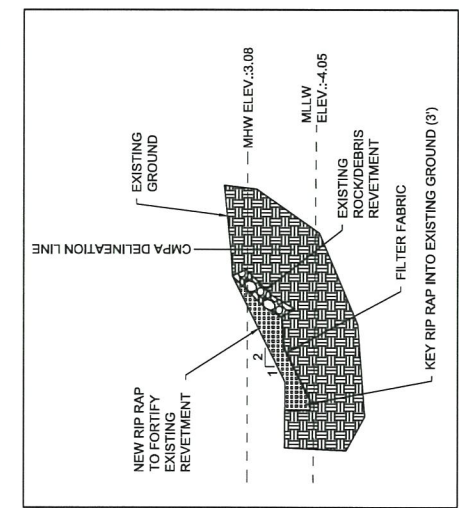
PROJECT NO:	18-0143
DRAWN BY:	TCB
DESIGNED BY:	TCB
SURVEYED BY:	YAWN
SURVEY DATE:	JAN. 2019
CHECKED BY:	JMM
SCALE:	1" = 30'
DATE:	MARCH 13, 2020



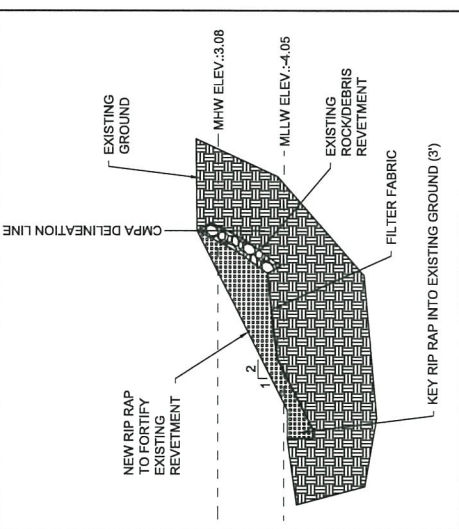
- NOTES:**
1. RIP RAP TO BE TYPE 2 AND MEET THE REQUIREMENTS OF GDOT STD. 805.
 2. FILTER FABRIC TO BE PLACED UNDER RIP RAP AND SHOULD BE MIRAFI HP570 OR APPROVED EQUAL.



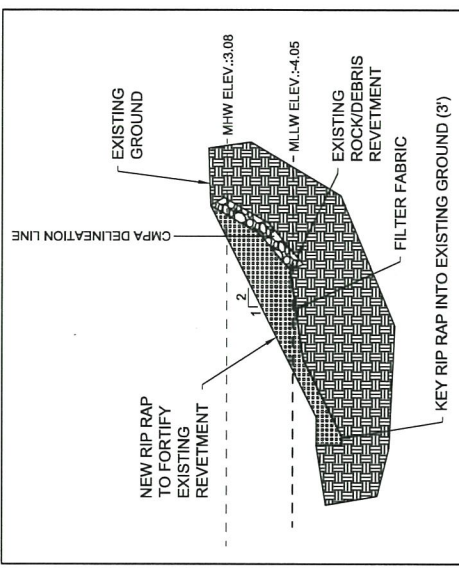
PLAN
SCALE: 1" = 30'



SECTION F-F



SECTION G-G



SECTION H-H

SHEET 11

EMC ENGINEERING SERVICES, INC.
 10 Chatham Center South,
 Ste 100
 Savannah, GA 31405
 Ph: (912) 232-6533
 Fax: (912) 233-4580
 savannah@emc-eng.com
 www.emc-eng.com

CIVIL MARINE ENVIRONMENTAL

ALBANY, ATLANTA, AUGUSTA, BRUNSWICK, COLUMBUS, STATESBORO & VALDOSTA

RIP RAP REVETMENT PLAN AND DETAIL

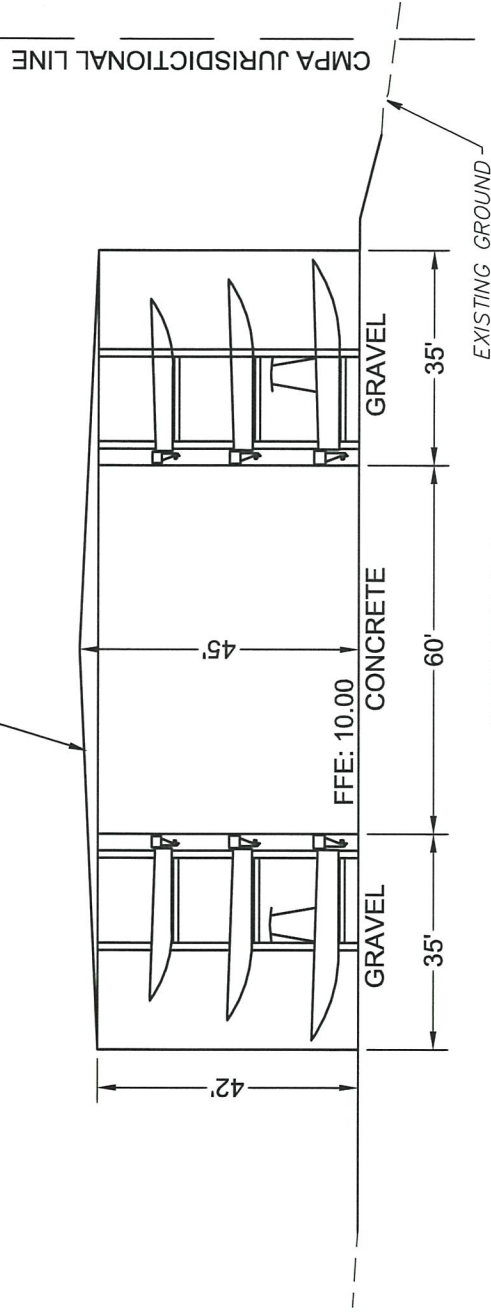
SAVANNAH BOATHOUSE DEVELOPMENT

8020 E. US HWY 80
 CHATHAM COUNTY, GEORGIA

Prepared for:
3 SEA SONS, LLC.

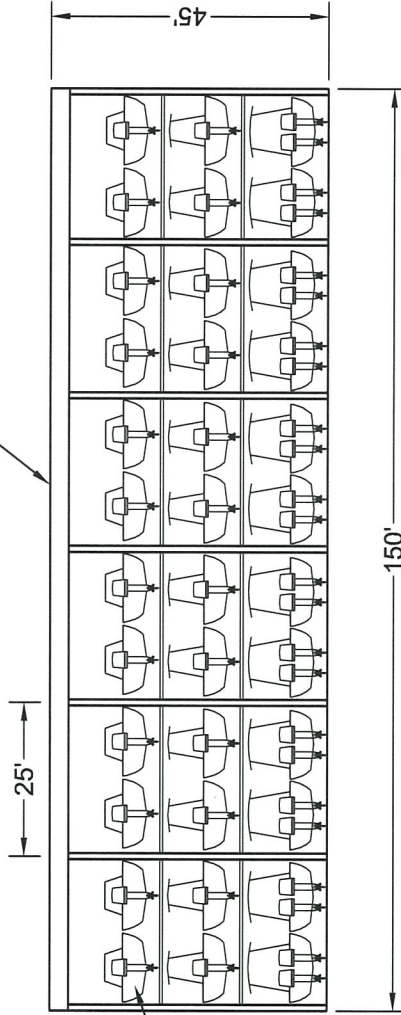
PROJECT NO:	18-0143
DRAWN BY:	TCB
DESIGNED BY:	TCB
SURVEYED BY:	YAWN
SURVEY DATE:	JAN. 2019
CHECKED BY:	JMM
SCALE:	1" = 30'
DATE:	MARCH 13, 2020

ENCLOSED BUILDING
(4 SIDES) W/ SLIDING
DOORS FOR ACCESS



SECTION A-A
SCALE: 1" = 30'

ENCLOSED BUILDING



SECTION B-B
SCALE: 1" = 30'

BOAT, TYP.



SHEET 12

EMC ENGINEERING SERVICES, INC.
10 Chatham Center South,
Ste 100
Savannah, GA 31405
Ph: (912) 232-6533
Fax: (912) 233-4580
savannah@emc-eng.com
www.emc-eng.com
CIVIL
MARINE
ENVIRONMENTAL

ALBANY, ATLANTA, AUGUSTA, BRUNSWICK,
COLUMBUS, STATESBORO & VALDOSTA

CROSS SECTIONS

SAVANNAH BOATHOUSE DEVELOPMENT

8020 E. US HWY 80

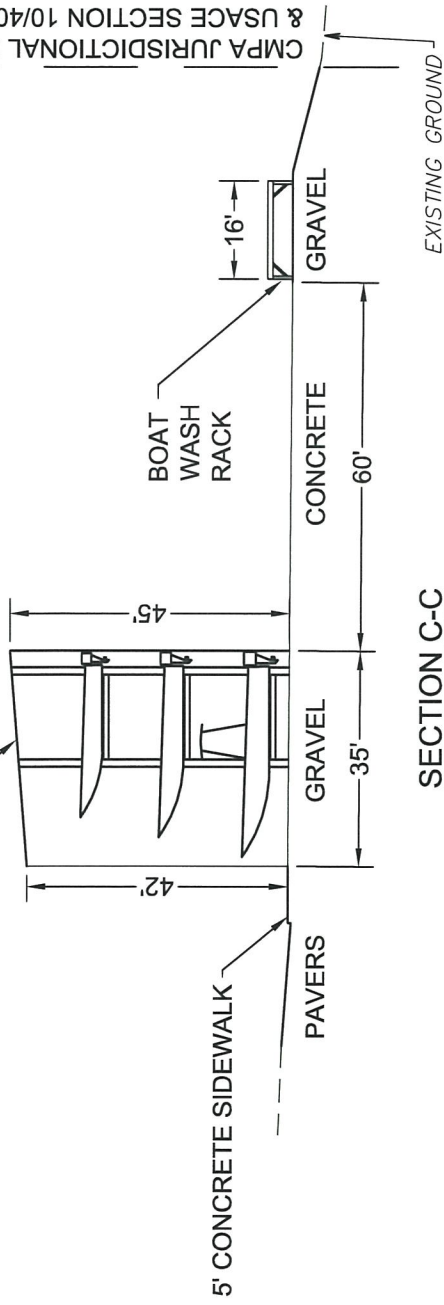
CHATHAM COUNTY, GEORGIA

Prepared for:

3 SEA SONS, LLC.

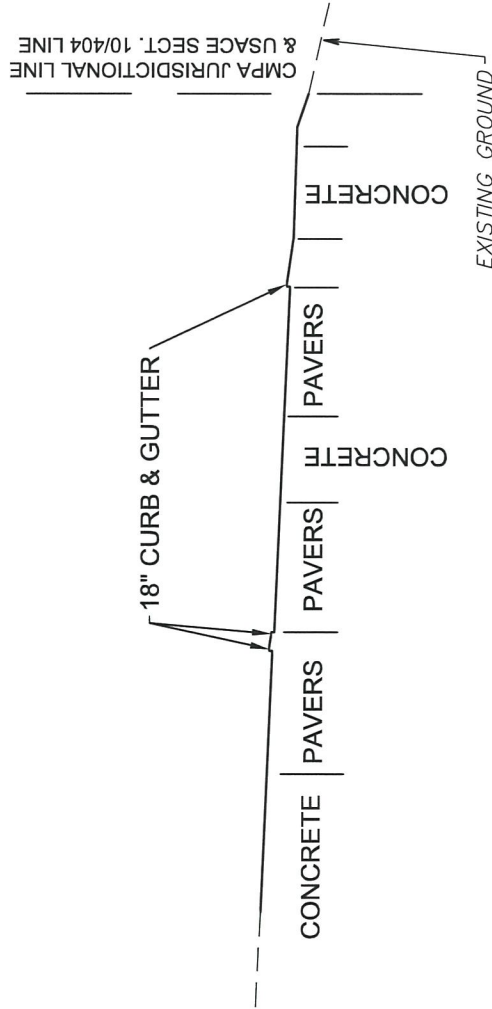
PROJECT NO:	18-0143
DRAWN BY:	TCB
DESIGNED BY:	TCB
SURVEYED BY:	YAWN
SURVEY DATE:	JAN. 2019
CHECKED BY:	JMM
SCALE:	1" = 30'
DATE:	MARCH 13, 2020

ENCLOSED (3 SIDES ONLY)



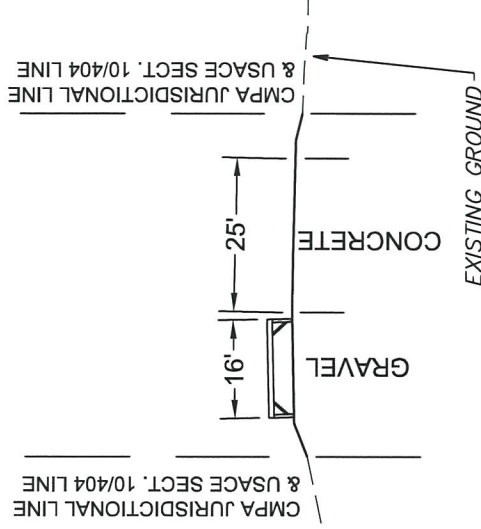
SECTION C-C

SCALE: 1" = 30'



SECTION D-D

SCALE: 1" = 30'



SECTION E-E

SCALE: 1" = 30'

SHEET 13

EMC ENGINEERING SERVICES, INC.
 10 Chatham Center South,
 Site 100
 Savannah, GA 31405
 Ph: (912) 232-6533
 Fax: (912) 233-4580
 savannah@emc-eng.com
 www.emc-eng.com



ALBANY, ATLANTA, AUGUSTA, BRUNSWICK,
 COLUMBUS, STATESBORO & VALDOSTA

CROSS SECTIONS

SAVANNAH BOATHOUSE DEVELOPMENT

8020 E. US HWY 80

CHATHAM COUNTY, GEORGIA

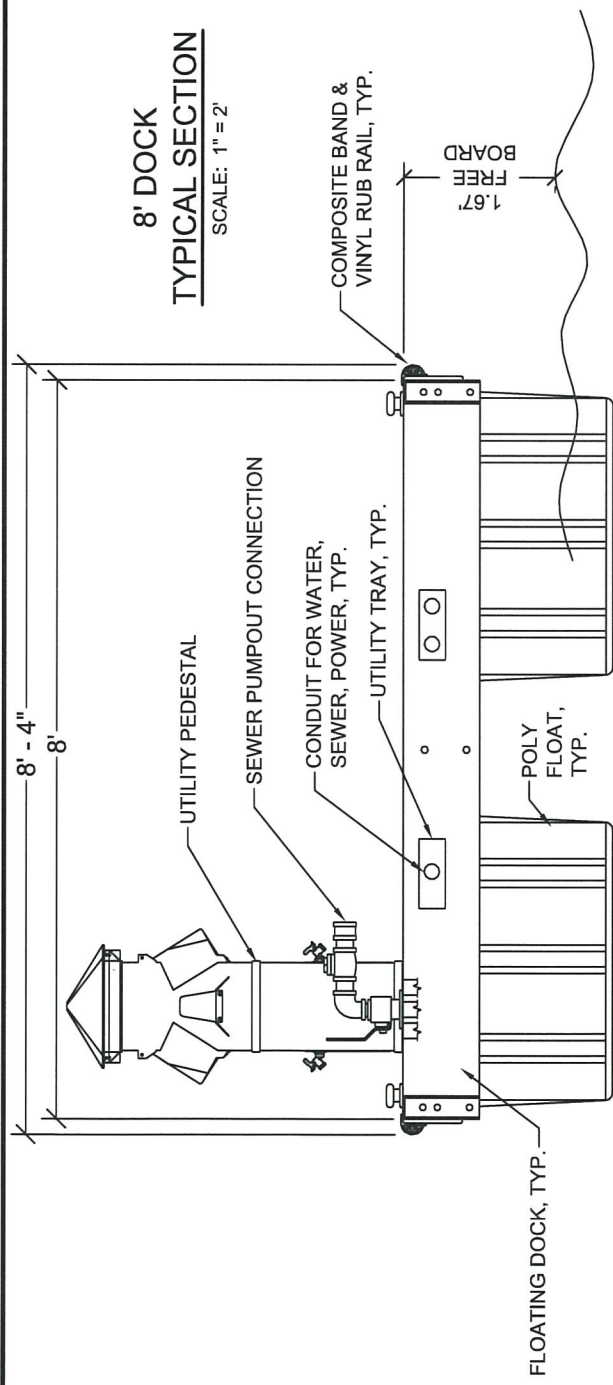
Prepared for:

3 SEA SONS, LLC.

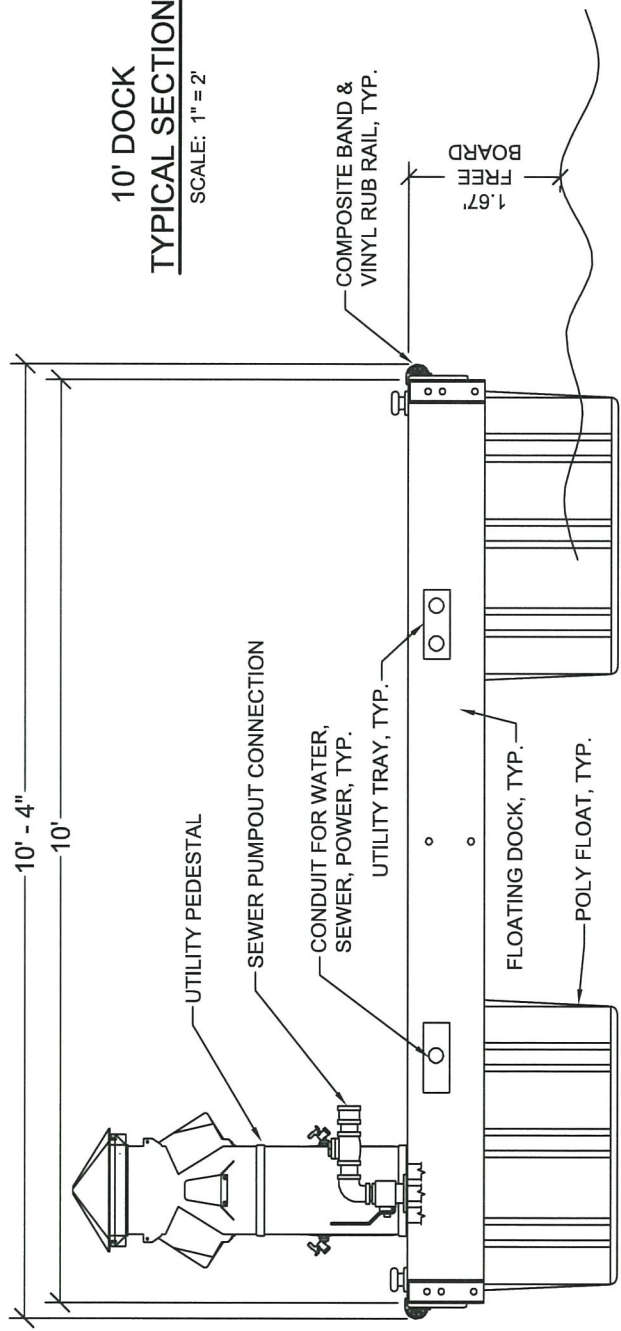
PROJECT NO:	18-0143
DRAWN BY:	TCB
DESIGNED BY:	TCB
SURVEYED BY:	YAWN
SURVEY DATE:	JAN. 2019
CHECKED BY:	JMM
SCALE:	1" = 30'
DATE:	MARCH 13, 2020



8' DOCK
TYPICAL SECTION
SCALE: 1" = 2'



10' DOCK
TYPICAL SECTION
SCALE: 1" = 2'



SHEET 14

PROJECT NO:	18-0143
DRAWN BY:	TCB
DESIGNED BY:	TCB
SURVEYED BY:	YAWN
SURVEY DATE:	JAN. 2019
CHECKED BY:	JMM
SCALE:	1" = 2'
DATE:	MARCH 13, 2020

DOCK CROSS SECTIONS

SAVANNAH BOATHOUSE DEVELOPMENT

8020 E. US HWY 80
CHATHAM COUNTY, GEORGIA

Prepared for:
3 SEA SONS, LLC.

EMC ENGINEERING SERVICES, INC.
10 Chatham Center South,
Savannah, GA 31405
Ph: (912) 232-6533
Fax: (912) 233-4580
savannah@emc-eng.com
www.emc-eng.com

emc
CIVIL
MARINE
ENVIRONMENTAL

ALBANY, ATLANTA, AUGUSTA, BRUNSWICK,
COLUMBUS, STATESBORO & VALDOSTA