

slighenvironmental consultants, inc.
31 Park of Commerce Way, Suite 200B
Savannah, Georgia 31405
phone (912) 232-0451
fax (912) 232-0453
www.slighhec.com

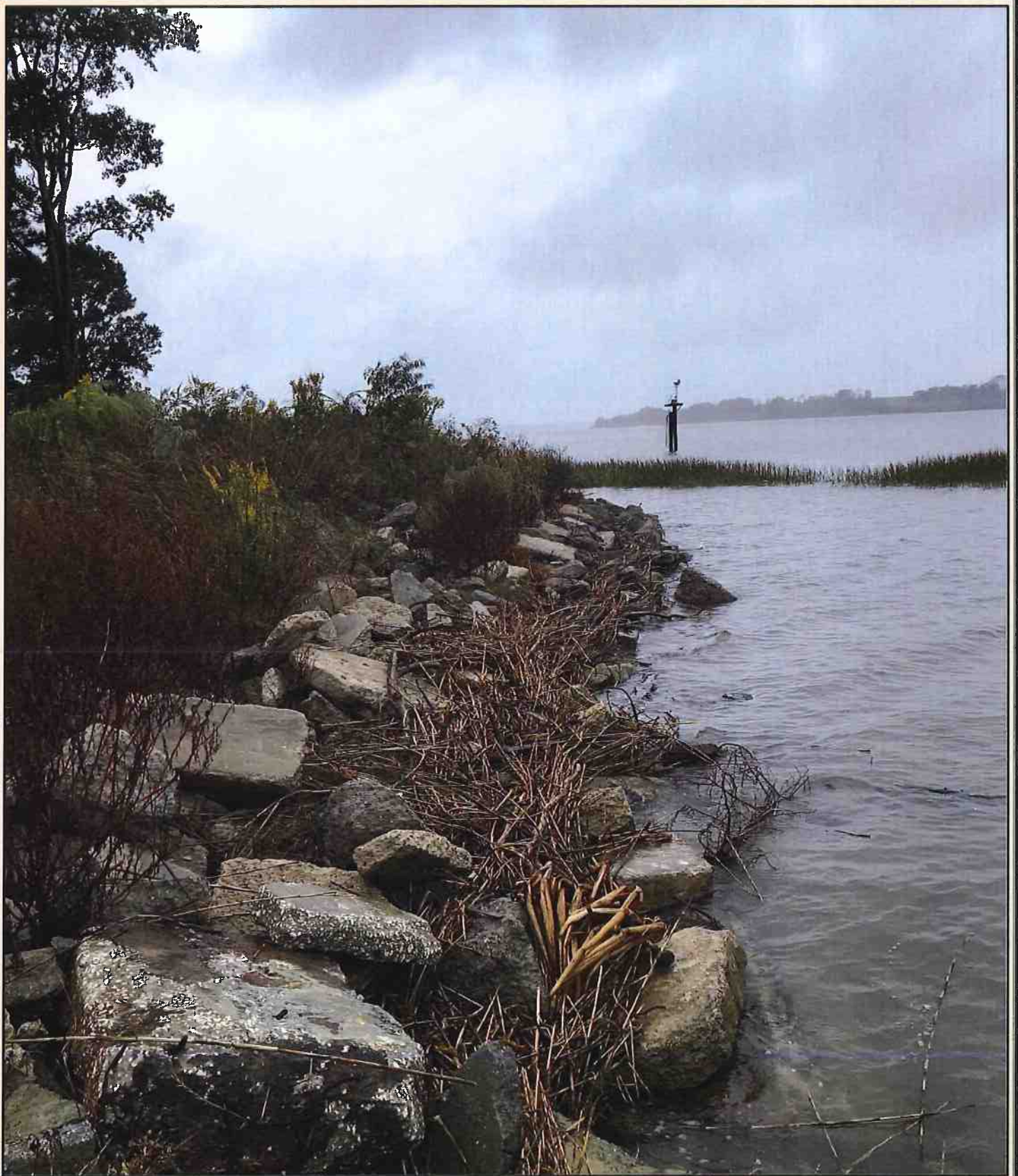
Existing Conditions Facing East
Sea Point Marine Terminal

Exhibit Date: October 21, 2020

Drawn By: TCT

Reviewed By: SFS

Job Number : 01-18-100



slighenvironmental consultants, inc.
31 Park of Commerce Way, Suite 200B
Savannah, Georgia 31405
phone (912) 232-0451
fax (912) 232-0453
www.slighhec.com

Existing Conditions Facing West
Sea Point Marine Terminal

Exhibit Date: October 21, 2020

Drawn By: TCT

Reviewed By: SFS

Job Number : 01-18-100



slighenvironmental consultants, inc.
31 Park of Commerce Way, Suite 200B
Savannah, Georgia 31405
phone (912) 232-0451
fax (912) 232-0453
www.slighhec.com

Existing Conditions Facing North
Sea Point Marine Terminal

Exhibit Date: October 21, 2020

Drawn By: TCT

Reviewed By: SFS

Job Number : 01-18-100



sligh environmental consultants, inc.
31 Park of Commerce Way, Suite 200B
Savannah, Georgia 31405
phone (912) 232-0451
fax (912) 232-0453
www.slighec.com

Existing Bulk Facility
Sea Point Marine Terminal

Exhibit Date: October 21, 2020

Drawn By: TCT

Reviewed By: SFS

Job Number : 01-18-100



sligh environmental consultants, inc.
31 Park of Commerce Way, Suite 200B
Savannah, Georgia 31405
phone (912) 232-0451
fax (912) 232-0453
www.slighhec.com

Existing Bulk Conveyor
Sea Point Marine Terminal

Exhibit Date: October 21, 2020

Drawn By: TCT

Reviewed By: SFS

Job Number : 01-18-100



sligh environmental consultants, inc.
31 Park of Commerce Way, Suite 200B
Savannah, Georgia 31405
phone (912) 232-0451
fax (912) 232-0453
www.slighhec.com

Existing Conditions, Water Intake Facility
Sea Point Marine Terminal

Exhibit Date: October 21, 2020

Drawn By: TCT

Reviewed By: SFS

Job Number : 01-18-100