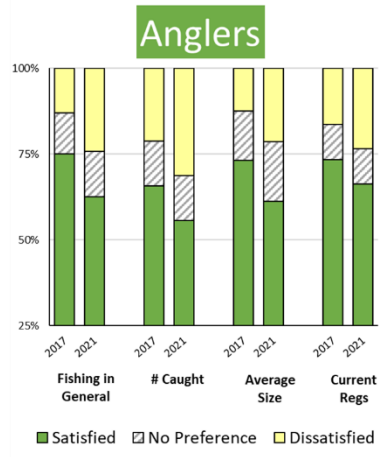


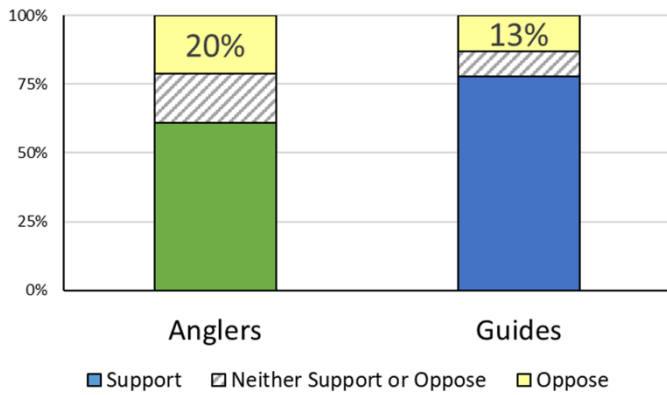
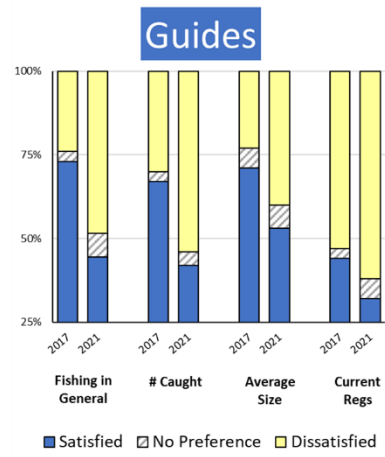
# Angler & Guide Satisfaction Summary



10% less satisfied



21% less satisfied

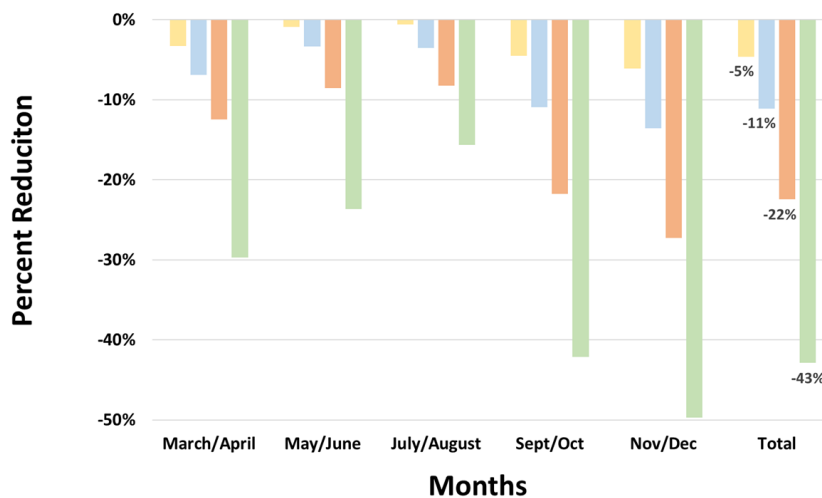


**Action 1:** Should a vessel limit be established?

- Option A: status quo (no vessel limit)
- Option B: 10 fish
- Option C: 8 fish
- Option D: 6 fish

Average 2009-2021	10 fish	9 fish	8 fish	7 fish	6 fish	5 fish
	-2%	-4%	-6%	-8%	-11%	-15%

Average 2009-2021	4 fish	3 fish	2 fish	1 fish
	-5%	-11%	-23%	-43%



**Action 2:** Should the bag limit be decreased?

- Option A: status quo (5 fish)
- Option B: 4 fish
- Option C: 3 fish
- Option D: 2 fish
- Option E: 1 fish

# Angler & Guide Satisfaction Summary

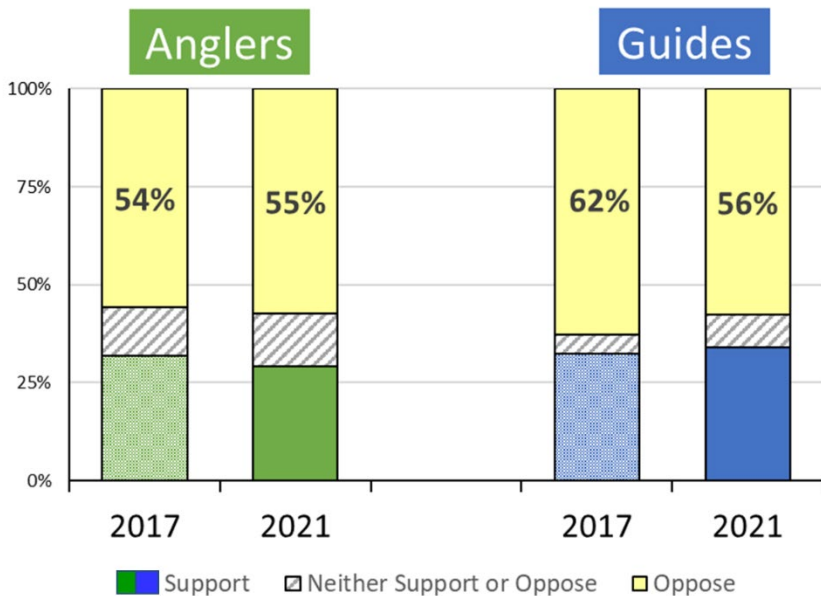
## Action 3: Should captain/mate retain a bag limit?

Option A: status quo (currently can retain)

Option B: no (cannot retain)

## Slot Size Limit

Action 4: Should the slot size limit be changed? Option A: status quo (14"-23") Option B: yes (what should be considered?)	Bag	Slot Size Limit			
		14"-23" current	14"-25"	15"-23"	15"-25"
	1	52%	47%	53%	47%
	2	47%	41%	48%	41%
	3	44%	37%	46%	38%
	4	43%	36%	45%	37%
	5	42%	35%	44%	36%



## Action 5: Should there be a red drum season?

Option A: status quo (no season)

Option B: yes (what should be considered?)