

CRD Red Drum Town Hall

Red Drum Town Hall Meeting

June 6 & 9, 2022

Mission Statement:

To balance coastal development and protection of the coast's natural assets, socio-cultural heritage and recreational resources for the benefit of present and future generations.

Agenda

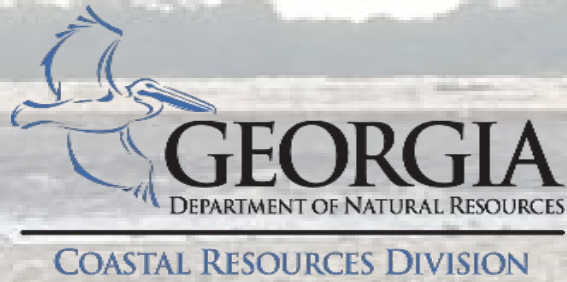
Welcome & Introductions

Red Drum Research: 2021 data update

Discussion of Angler & Guide Satisfaction Survey

Question & Answer Session

Comment Format



Status of Red Drum in Georgia 2022

Red Drum Town Hall Meeting

June 6 & 9, 2022

Mission Statement:

To balance coastal development and protection of the coast's natural assets, socio-cultural heritage and recreational resources for the benefit of present and future generations.

CRD Sampling Surveys and Programs

GA CRD has numerous sources of data to monitor Red Drum populations in the state

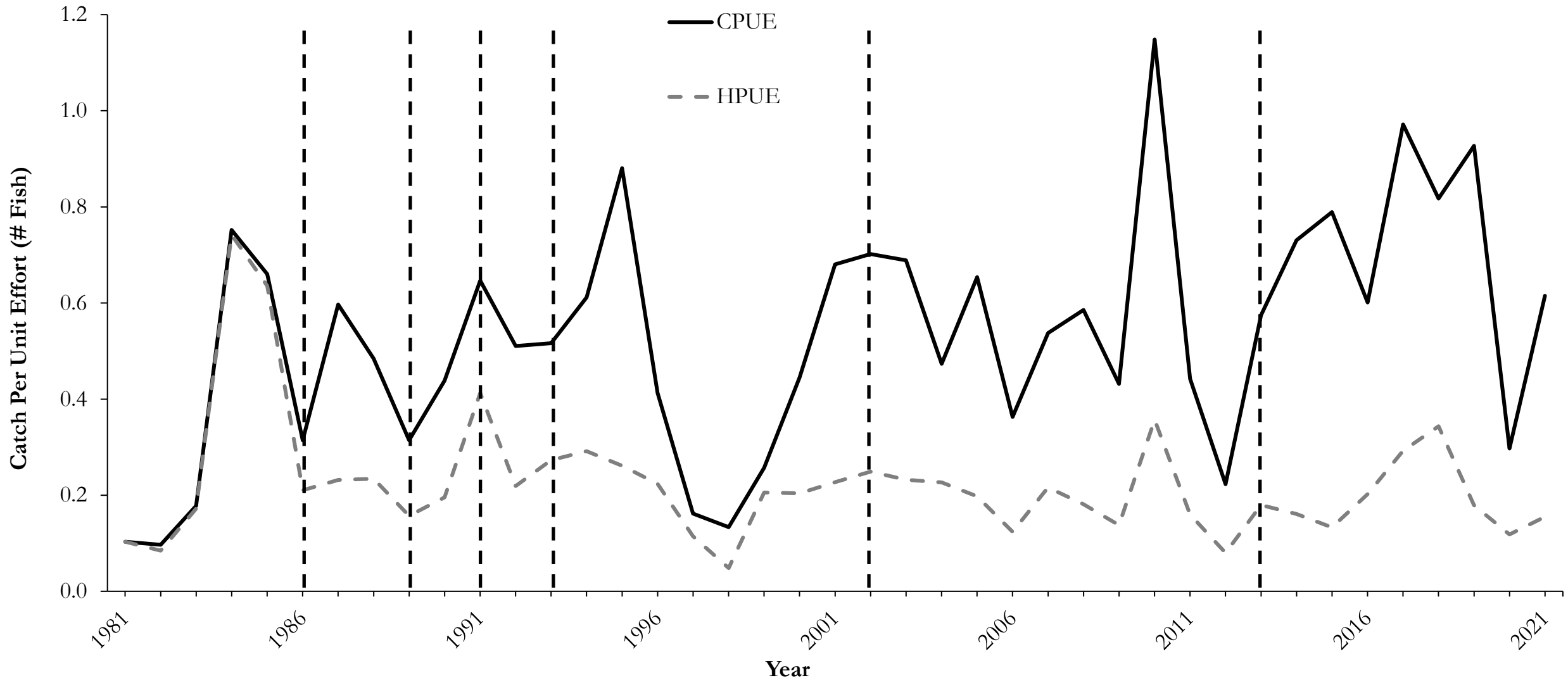
- MRIP (Marine Recreational Information Program)
- 6 State surveys that focus on Red Drum



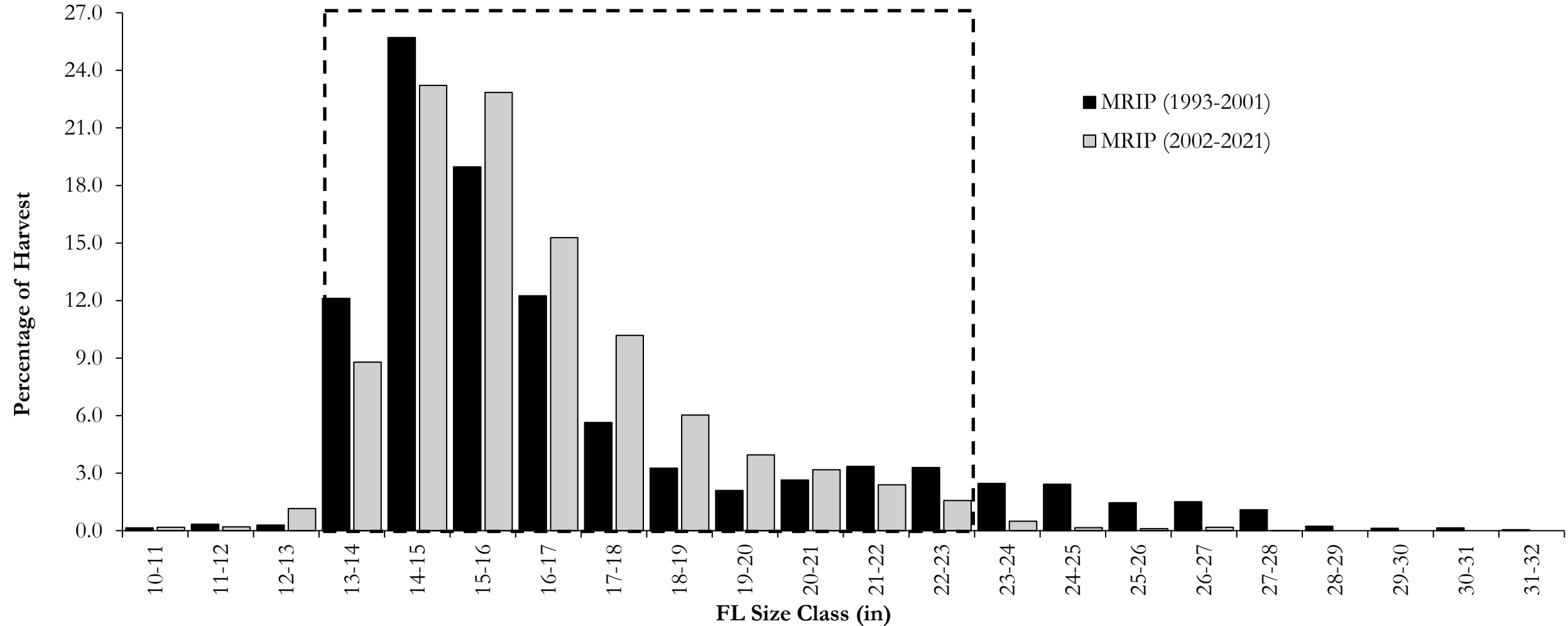
Data and Results – Through 2021



Results – MRIP Catch and Harvest



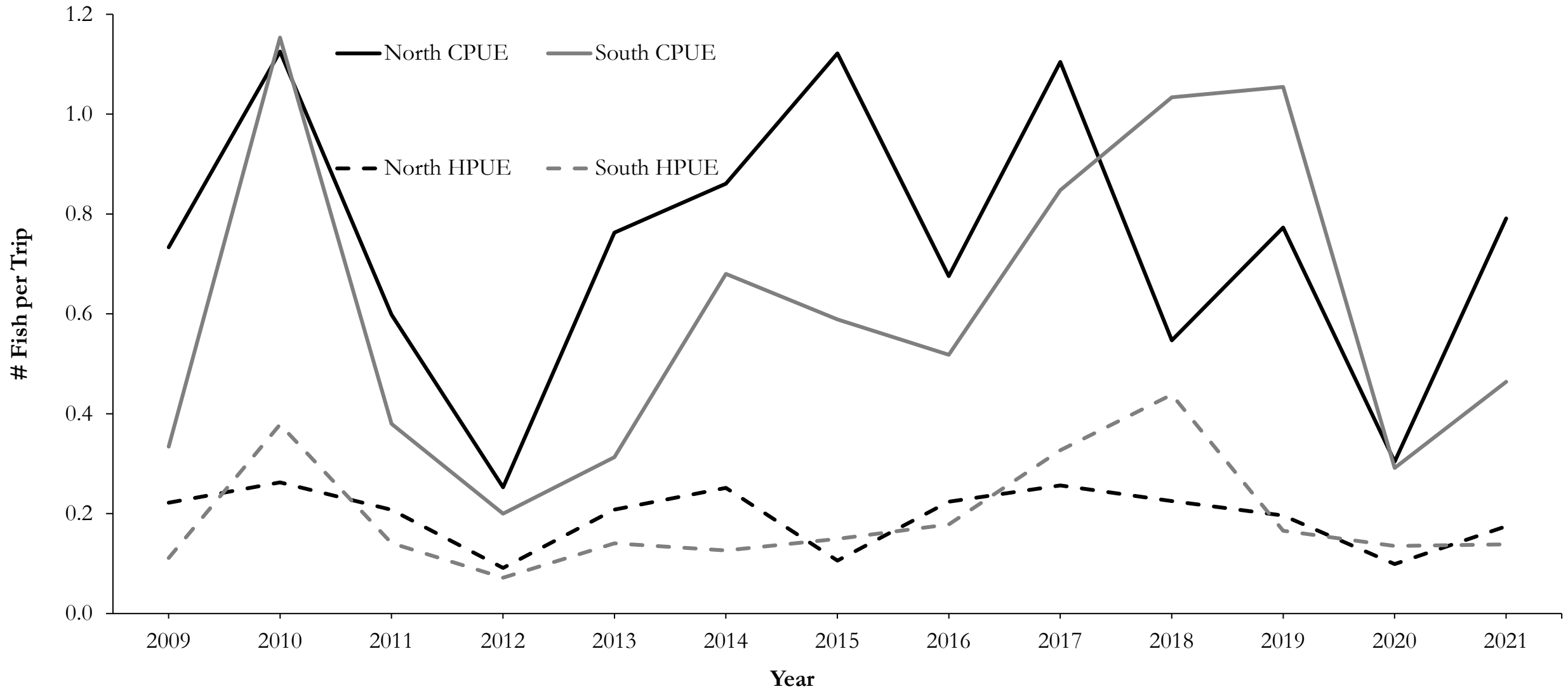
Results – MRIP Harvest Length



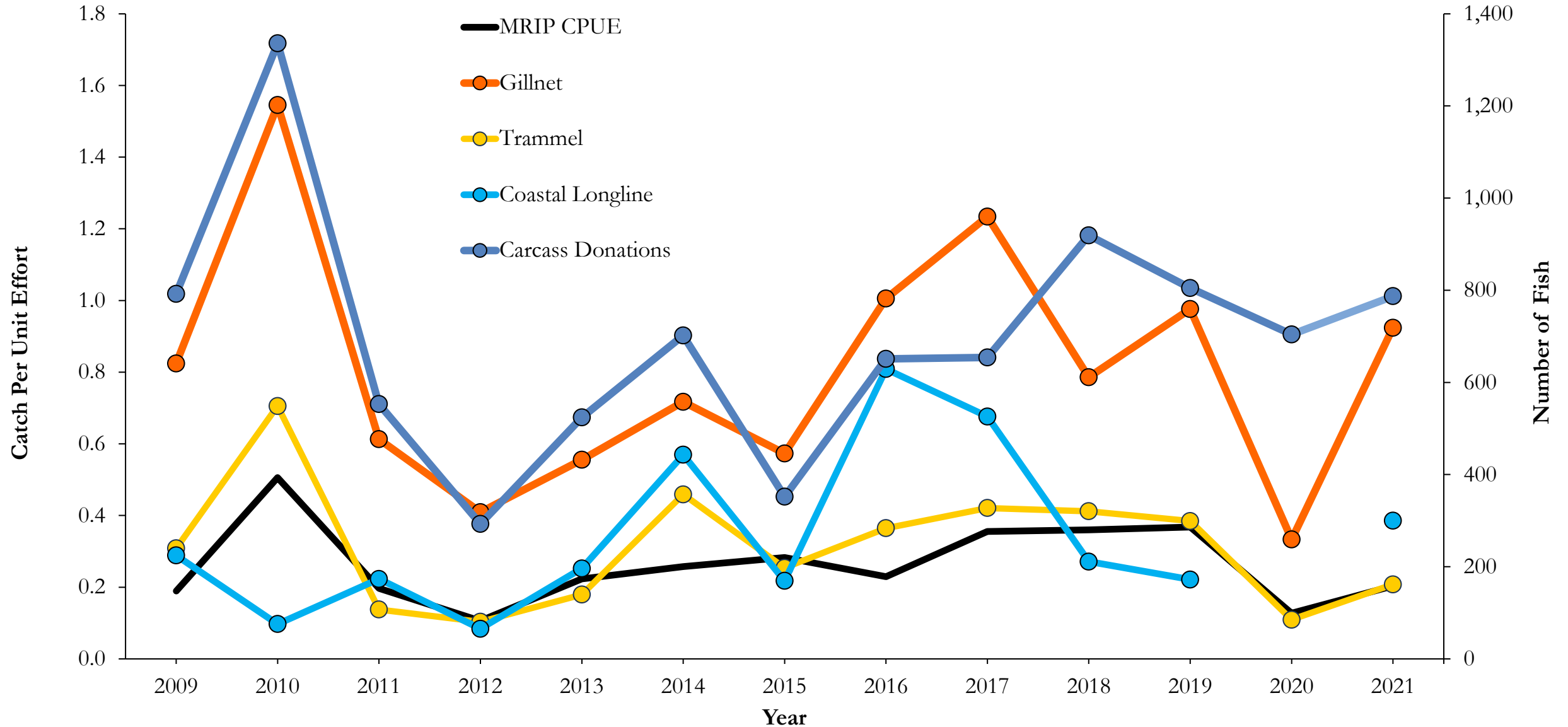
1993: Year-round season; 14-27 inch slot; 5 fish daily creel and 5 fish possession limit

2002: Year-round season; 14-23 inch slot; 5 fish daily creel and 5 fish possession limit

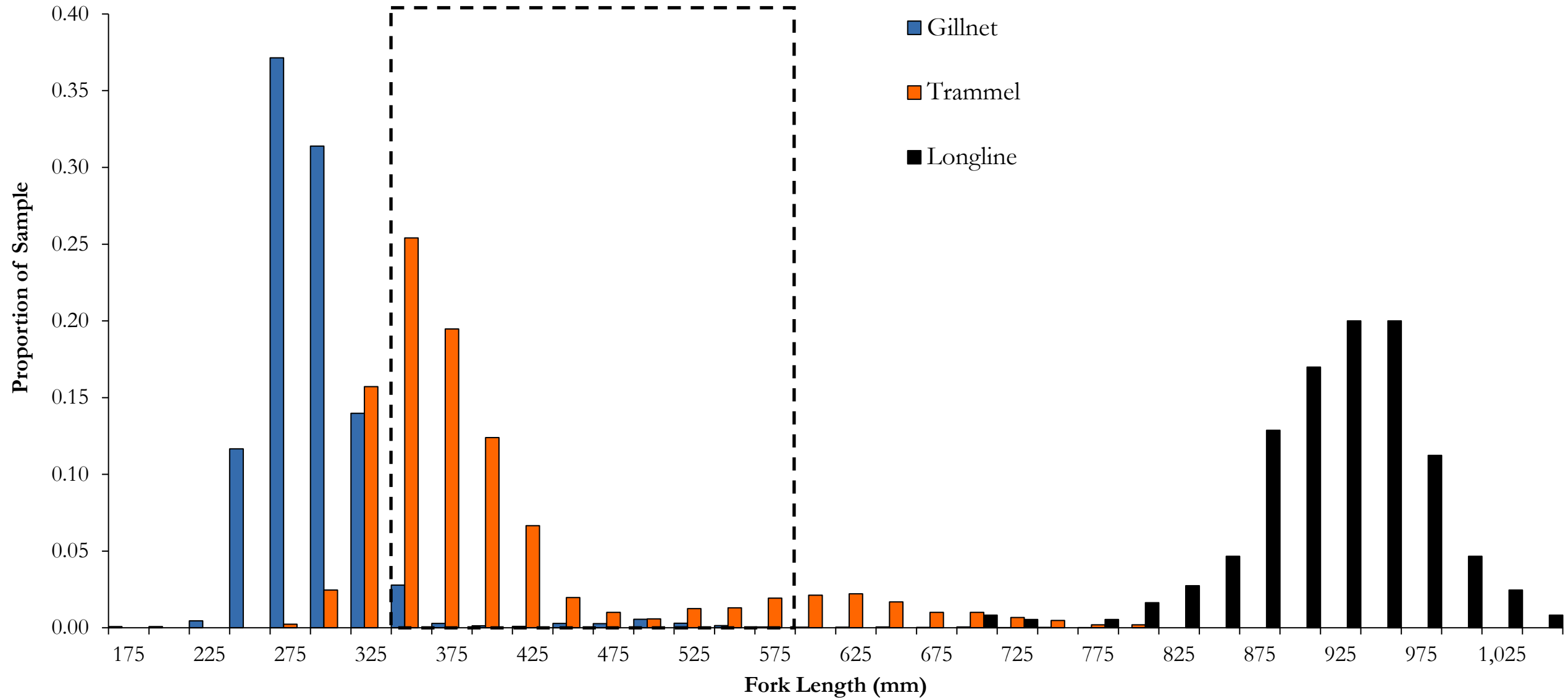
Results – MRIP Regional CPUE



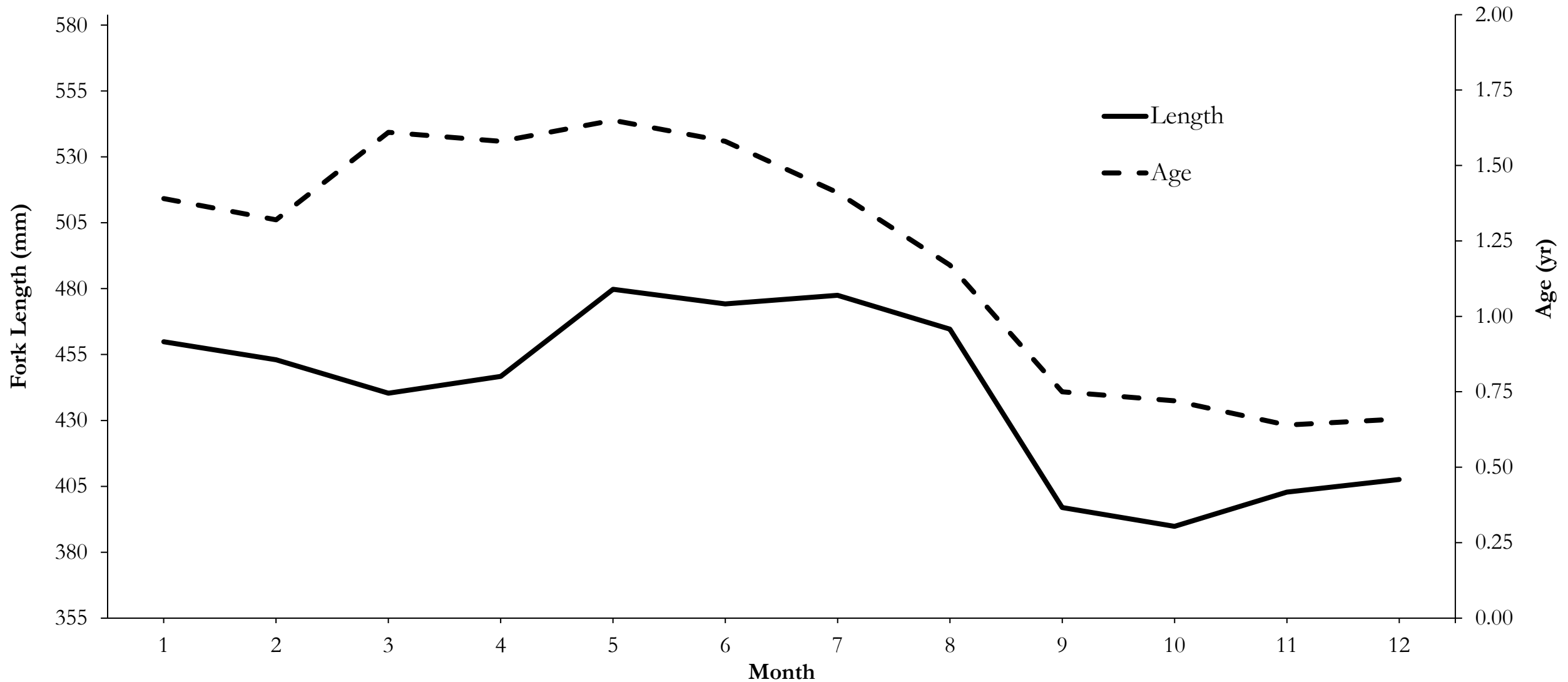
Results – MRIP and State Surveys



Results – Size Distribution of Sampling Programs



Results – Carcass Monthly Mean Age and Length



Results – Cooperative Angler Tagging

2018-present

6,138 tags released, 1,021 total returns

- 95% returns in state, 3% Florida, 1% SC
- Double Tags
- High Reward Tags (Pink)
- 44% of returned tags are harvested



REWARD
FOR TAGGED RED DRUM

← PINK TAG

\$100 CASH REWARD
YOU MUST **REMOVE** PINK TAG.
Record date, location of catch, your name, address and phone number.
Retain or release fish as normal.

Mail tag and information to:
Georgia Department of Natural Resources
Cooperative Angler Tagging Project
One Conservation Way,
Brunswick, GA 31520

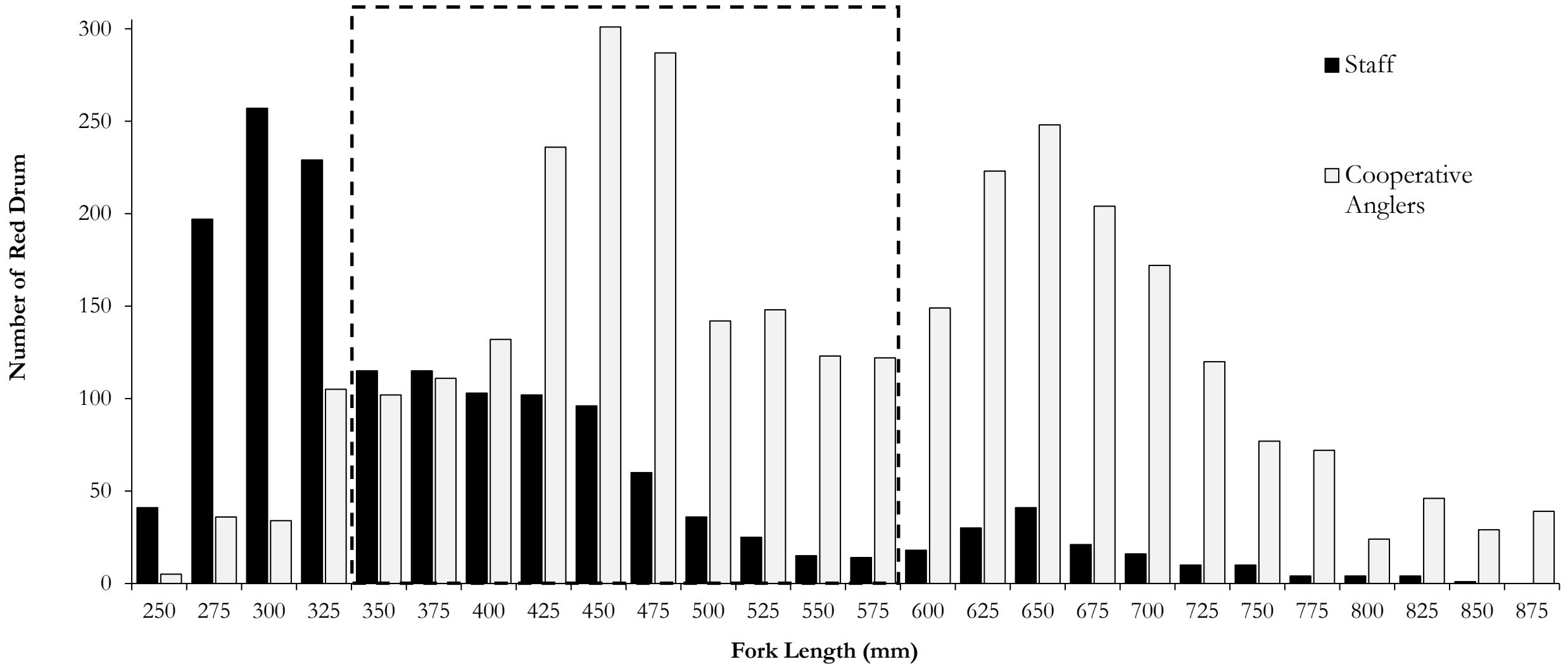
Fish must have **PINK** tag to be eligible for cash reward.
YELLOW tags are eligible for other non-cash prizes.
YELLOW tags may be removed or left in the fish.

Visit CoastalGaDNR.org/FishTag or call 912-264-7218 for more information.

GEORGIA
DEPARTMENT OF NATURAL RESOURCES
COASTAL RESEARCH DIVISION

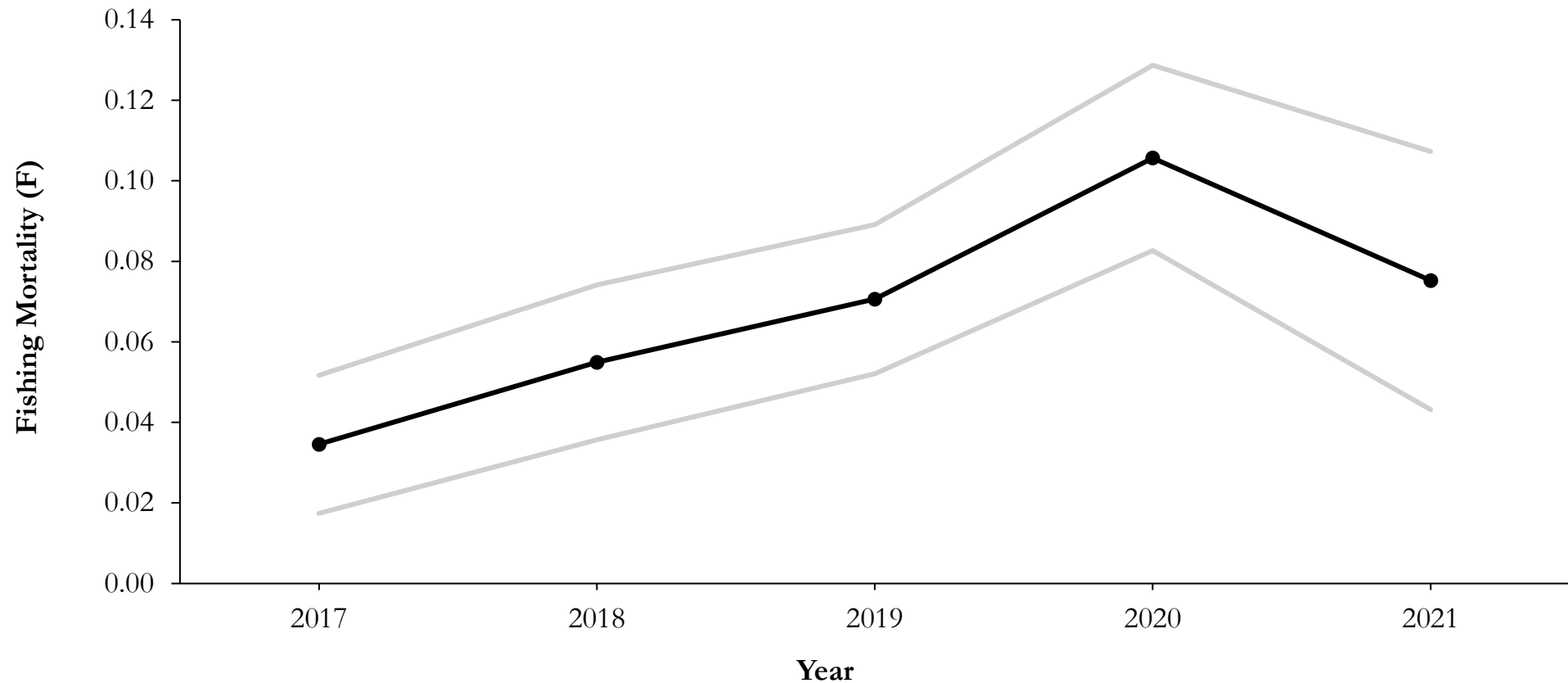
GEORGIA
NATURAL RESOURCES FOR THE FUTURE

Results – Cooperative Tagging Sizes 2020-21



Slot is 355 mm – 584 mm (14 - 23 in)

Results – Tagging Mortality Estimates

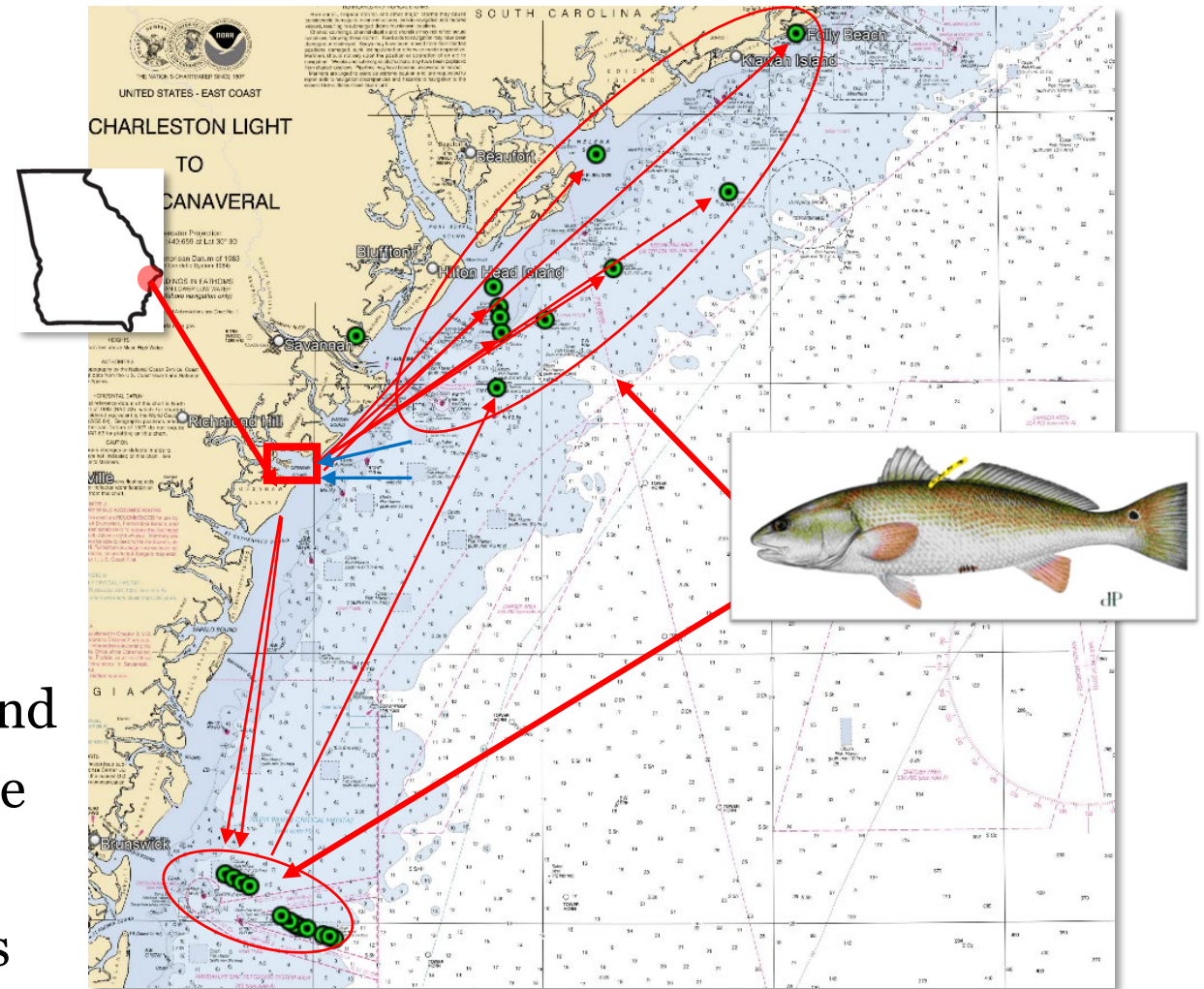


Preliminary fishing mortality (F) estimates based on tag return data

- Similar to F estimates in 2017 stock assessment
- Estimates will improve over time as more tags are returned
- Examine other models to improve estimates

Escapement Project- Offshore and Interstate Movement

- 63 Red Drum tagged in Wassaw Sound (current)
 - 345 - 680 mm FL (13.6 - 29.6 in)
- 29 detected 440,477 times
 - 11 caught by anglers
 - 4 harvested
- 8 detected outside of the study area
 - ~24 inches
 - 6 traveled to SC
 - 2 moved south in GA
 - 1 later moved N to SC
- Up to 75 miles N and S from Wassaw
- Smaller fish more stationary; remain in the sound
- Larger fish mobile; more likely detected offshore
- St. Simons array now in place
- Tagging will occur in both systems for two years



Discussion



Discussion

- **Red Drum populations are stable over time with recruitment variability**
 - 2020 was a low year, but 2021 saw rebounds
 - Same pattern seen regionally in stock assessments
 - The long lifespan of Red Drum allows populations to be resilient to poor recruitment years
- **CRD surveys and MRIP data show similar trends in CPUE**
 - Agreement among surveys suggest clear population characteristics
 - No difference in northern and southern GA coast trends – no localized effects
 - Longline adult and juvenile net surveys show related trends, but do not suggest a strong spawner-recruit trend

Discussion

- **Environmental and regional population dynamics may play a large role in Red Drum abundance in Georgia**
 - Abundance appears to be somewhat cyclic
 - Low year of 2012 was a record high year in Virginia and Delaware
 - Population could be experiencing effects of a long-term geographic shift
- **Other threats to Red Drum populations (regionally and in GA)**
 - Habitat degradation due to coastal development/pollution
 - Increased overall fishing effort
 - Increased targeting of mature adults

Conclusions- Future Activities

- **Ongoing ASMFC stock assessment will provide an update on regional population status**
 - Step 1 – Simulation assessment to select the best model for benchmark– completed 2022
 - Step 2 – Benchmark assessment using simulation assessment model– scheduled 2024
 - CRD data used in the assessments
 - Results from ongoing regional stock assessment will help provide information at the broader population scale
- **Continue to gather data through tagging and escapement programs**
 - Longer timeframes allow more data to be collected and estimates to be improved
 - Greater time for tagged fish to grow, disperse, and be reported by anglers or researchers

Questions?



If you have additional comments, you can reply electronically at coastalgadnr.org/RedDrumTownHall



Regulation History

Year	Regulation
1957	Prohibition of the use of gill nets in Georgia's estuarine waters (except for shad and diamondback terrapin)
1986	14-inch minimum-size and only 2 fish over 32-inches
1989	Year-round season; 14-inch minimum-size, 10 fish daily creel and only 2 fish over 32 inches
1989	Exclusive Economic Zone (3-200 miles) closed to harvest of Red Drum
1991	Year-round season; 14-inch minimum-size, 5 fish daily creel and only 1 fish over 27 inches
1992	Possession limit of 5 fish
1993	Year-round season; 14-27 inch slot; 5 fish daily creel and 5 fish possession limit
2002	Year-round season; 14-23 inch slot; 5 fish daily creel and 5 fish possession limit
2013	State implements game fish status