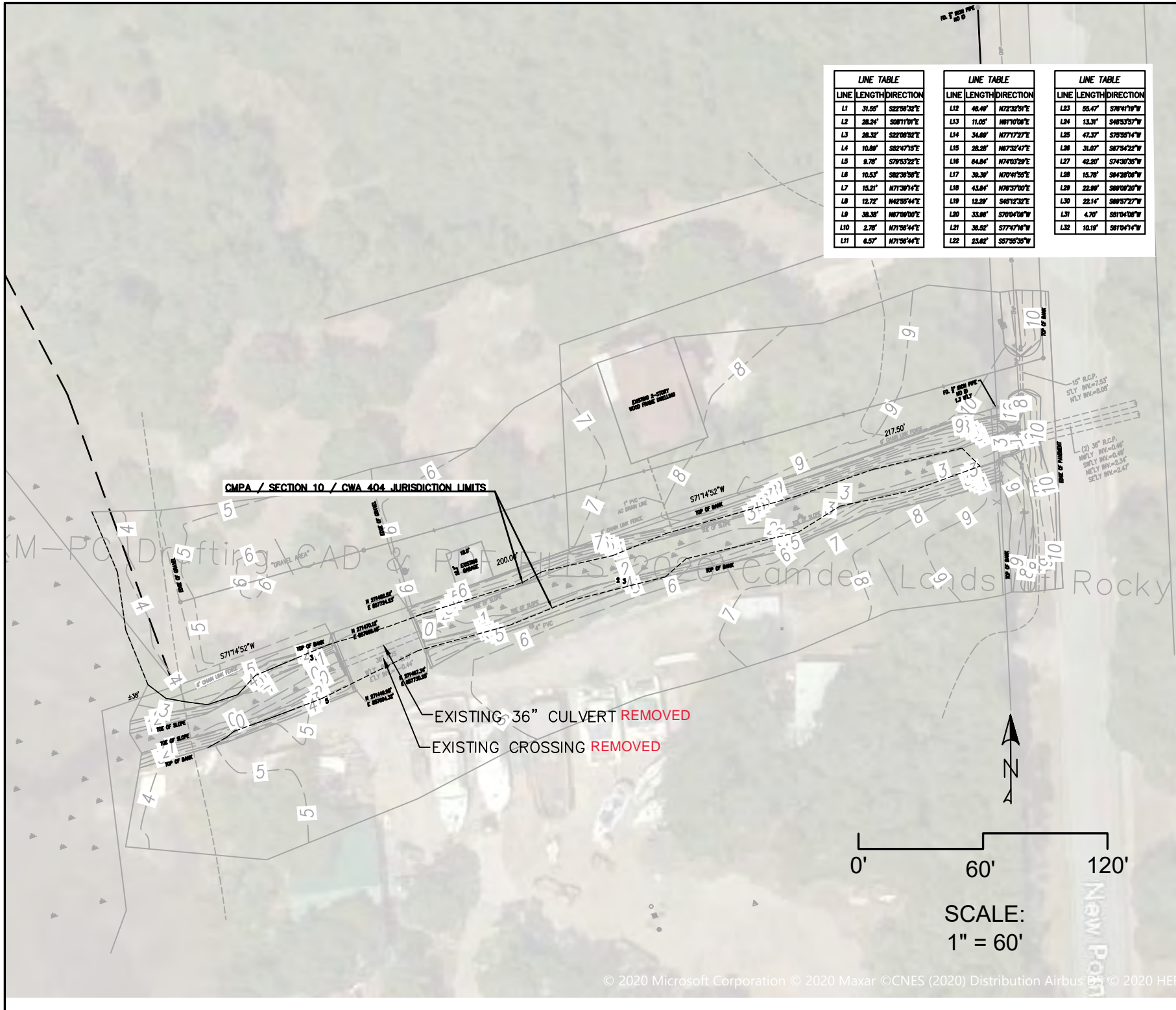


RLC Project No.:	20-246
Figure No.:	1
Prepared By:	DB
Sketch Date:	9/19/2021
Map Scale :	1 inch = 2,000 feet

**St. Marys
Boat Services**
 Camden County, Georgia

Location Map
 Prepared For: Rocky J. Smith

RLC
**RESOURCE+LAND
CONSULTANTS**
41 Park of Commerce Way, Ste. 101
Savannah, Georgia 31405
912.443.8396 www.rlc.com



LINE	LENGTH	DIRECTION
L1	31.85'	S22°56'32"E
L2	28.54'	S08°11'01"E
L3	28.32'	S22°08'32"E
L4	10.89'	S32°47'15"E
L5	8.78'	S75°53'22"E
L6	10.63'	S82°38'58"E
L7	15.21'	N71°38'14"E
L8	12.72'	N42°55'44"E
L9	38.38'	N07°00'00"E
L10	2.78'	N71°58'44"E
L11	6.57'	N71°58'44"E

LINE	LENGTH	DIRECTION
L12	48.48'	N72°32'51"E
L13	11.05'	N81°10'08"E
L14	34.69'	N71°12'27"E
L15	28.28'	N67°32'47"E
L16	64.84'	N74°03'29"E
L17	38.39'	N70°41'58"E
L18	43.84'	N76°37'00"E
L19	12.28'	S45°12'32"E
L20	33.88'	S70°04'08"W
L21	38.52'	S77°47'16"W
L22	23.62'	S57°55'35"W

LINE	LENGTH	DIRECTION
L23	65.47'	S76°41'16"W
L24	13.31'	S48°53'57"W
L25	47.37'	S75°55'14"W
L26	31.07'	S87°54'22"W
L27	42.20'	S74°30'35"W
L28	15.78'	S84°28'08"W
L29	22.98'	S88°18'20"W
L30	22.14'	S88°53'27"W
L31	4.70'	S81°04'18"W
L32	10.18'	S81°04'14"W

ROBERTS CIVIL ENGINEERING
 301 SEA ISLAND ROAD, SUITE 10
 ST. SIMONS, GA 31522
 912-638-9681 OFFICE
 912-289-0339 FAX

PREPARED FOR:
ROCKY SMITH

ST. MARY'S BOAT YARD
 ST. MARY'S, GA

DATE: 2020-05-18
 DRAWN BY: JCM
 CHECKED BY: JCM
 SCALE: 1" = 60'

1

